

Update

# Update of charts and tables in LFC Raising the Capital report

October 2016

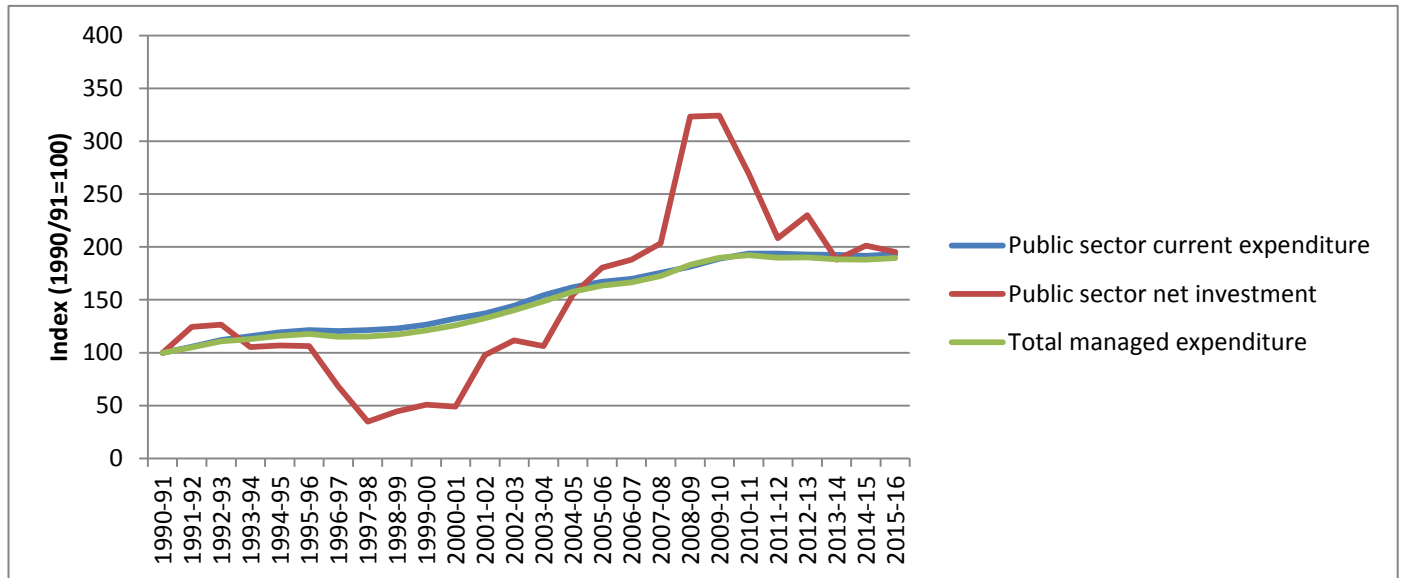
**Table 1: Taxation revenue attributable to sub-national and central/federal government as a percentage of GDP, 2013 [latest data available]**

	Local government	State / regional government	Local+state / regional	Federal or Central government	Social security	Total
Canada	2.8	12.1	14.9	12.7	2.9	30.5
France	5.8	0.0	5.8	15.1	24.0	45.0
Germany	3.0	8.0	11.0	11.5	13.9	36.5
Italy	7.1	0.0	7.1	23.6	13.1	43.9
Spain	3.2	4.5	7.7	13.8	11.1	32.7
Sweden	15.8	0.0	15.8	21.4	5.5	43.7
United Kingdom	1.6	0.0	1.6	24.9	6.2	32.9
United States	3.7	5.1	8.8	10.5	6.1	25.4
OECD total	3.9	4.9	8.8	20.4	8.4	34.2

Source: OECD Revenue Statistics

<Y:\Projects and Drafts\Finance Commission\Follow up work 2016\Update of charts and tables in the report\Table 1.xls.xlsx>

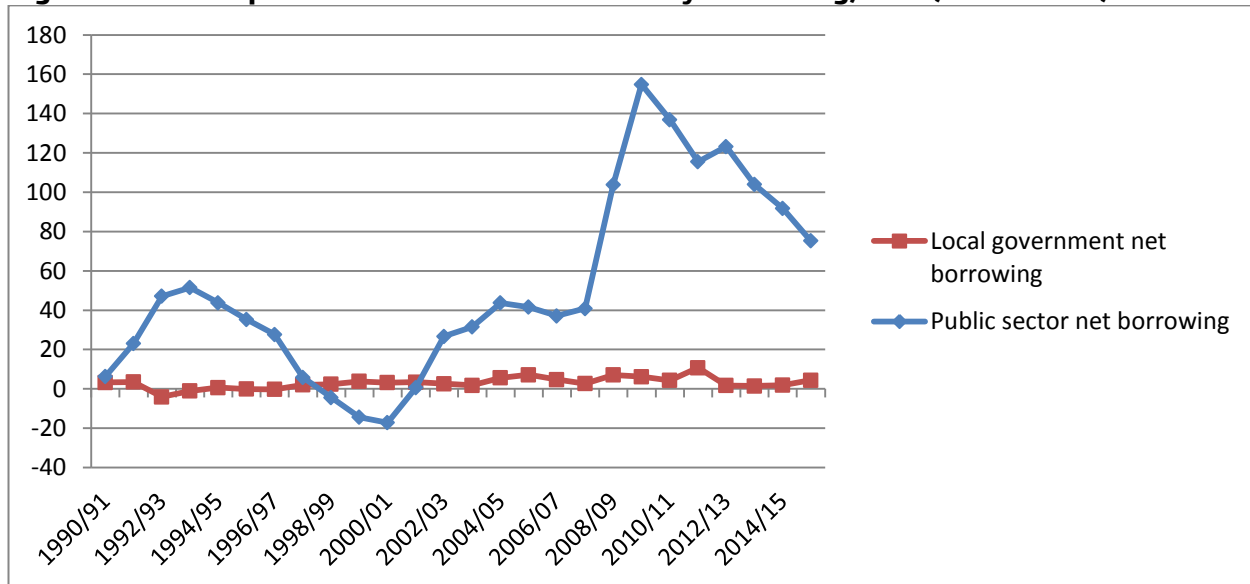
**Figure 1: Real Government capital investment and expenditure over time, 1990/91 to 2015/16 (Index 1990/91=100)**



Source: Office for National Statistics (Public Expenditure Statistical Analyses (PESA), 2016)

<Y:\Projects and Drafts\Finance Commission\Follow up work 2016\Update of charts and tables in the report\Figure 1 - PESA data.xlsx>

**Figure 2: Annual public sector and local authority borrowing, 1990/91 to 2015/16**



Source: Office for National Statistics, Local government net borrowing and Public sector net borrowing (excluding public sector banks), 2016

<Y:\Projects and Drafts\Finance Commission\Follow up work 2016\Update of charts and tables in the report\Figure 2 - ONS data.xlsx>

**Table 2: Selected forecast tax yields in London and the UK for 2015/16, £ million**

	London <sup>2</sup>	UK <sup>1</sup>	London %
Council tax	3529	28800	12
Business rates	6837	27800	25
Residential Stamp duty land tax	4484	10700	42
Annual tax on enveloped dwellings	158	178	89
Capital gains property disposal tax	338	1332	25

Sources: HM Treasury and Office for Budget Responsibility, HMRC, CIPFA, London Councils Council Tax Monitor, GLA Economics calculations

<sup>1</sup>UK data is forecast by the Office for Budget Responsibility and taken from the March 2016 Budget and supplementary fiscal tables. Capital gains property disposal tax is estimated as a share of total capital gains tax, as reported in the Budget, using 2012/13 (last available data) share of CGT from disposal of residential assets.

<sup>2</sup>Data for London is calculated by applying London's share of UK tax for the latest year of actual data available, to UK Budget forecast data. For council tax, this is London Councils Council Tax Monitor (2015/16), for business rates, CIPFA Revenue Collection statistics (2014/15), for stamp duty land tax, HMRC UK Stamp Duty statistics (2014/15), for annual tax on enveloped dwellings, HMRC ATED statistics (2014/15). For capital gains property disposal tax, London's share of total UK capital gains tax is applied to estimates of UK capital gains property disposal tax.

<Y:\Projects and Drafts\Finance Commission\Follow up work 2016\Update of charts and tables in the report\Table 2.xlsx>

**Table 3: Identifiable expenditure by function (2014/15) in London, the UK and the rest of the UK (£ per capita)**

	Public order & safety	Enterprise & employment policies	Transport	Health	Education & training	Social protection	Total identifiable expenditure on services
Greater London	651	97	600	2,534	1,543	3,624	9,840
UK	441	120	314	2,069	1,307	3,927	8,913
Rest of the UK	434	142	273	2,020	1,297	4,079	9,033

Source: HM Treasury, Country and regional analysis, 2015, and GLA Economics calculations

<Y:\Projects and Drafts\Finance Commission\Follow up work 2016\Update of charts and tables in the report\Table 3.xlsx>

**Table 4: Public expenditure as a per cent of London and UK GVA, 2010/11 to 2014/15**

	London	UK
2010/11	28	39
2011/12	26	38
2012/13	25	37
2013/14	24	37
2014/15	23	36

Source: PESA (2015), ONS Regional GVA (2015), GLA Economics calculations

Note: PESA identifiable expenditure for the financial year is used here together with GVA for the calendar year. (So for 2014/15 it is PESA data for 2014/15 together with GVA data for 2014).

<Y:\Projects and Drafts\Finance Commission\Follow up work 2016\Update of charts and tables in the report\Table 4.xlsx>

**Table 5: Expenditure on selected services in London, the Greater South East and the UK in 2014/15: total, current and capital levels (£ million) and as a per cent of regional or national GVA**

		London		Greater South East		UK	
		Level	% of GVA	Level	% of GVA	Level	% of GVA
Public order & safety	Total	5,555	1.5%	10,599	1.4%	28,492	1.8%
	Current	5,452	1.5%	10,294	1.4%	27,366	1.7%
	Capital	104	0.0%	305	0.0%	1,127	0.1%
Enterprise & employment policies	Total	835	0.2%	1,780	0.2%	7,726	0.5%
	Current	846	0.2%	1,757	0.2%	6,848	0.4%
	Capital	-11	0.0%	23	0.0%	879	0.1%
Transport	Total	5,121	1.4%	8,642	1.2%	20,296	1.3%
	Current	1,252	0.3%	2,277	0.3%	6,630	0.4%
	Capital	3,869	1.1%	6,365	0.9%	13,666	0.8%
Health	Total	21,638	5.9%	49,034	6.6%	133,637	8.3%
	Current	20,854	5.7%	47,383	6.4%	129,070	8.0%
	Capital	784	0.2%	1,651	0.2%	4,567	0.3%
Education & training	Total	13,178	3.6%	30,623	4.1%	84,403	5.2%
	Current	11,833	3.2%	27,967	3.8%	78,162	4.8%
	Capital	1,345	0.4%	2,656	0.4%	6,242	0.4%
Social protection	Total	30,948	8.5%	84,034	11.3%	253,640	15.7%
	Current	30,925	8.5%	83,945	11.3%	253,247	15.6%
	Capital	22	0.0%	88	0.0%	393	0.0%

Source: PESA 2015, ONS and GLA Economics calculations

Note: For the % of GVA, data for the calendar year is used (so in this instance GVA data for 2014).

<Y:\Projects and Drafts\Finance Commission\Follow up work 2016\Update of charts and tables in the report\Table 5.xlsx>

For more information please contact Fiona Morrill GLA Intelligence  
Greater London Authority, City Hall, The Queen's Walk, More London, London SE1 2AA  
Tel: 020 7983 4198 e-mail: [Fiona.morrill@london.gov.uk](mailto:Fiona.morrill@london.gov.uk)