



London-wide Legible London audit

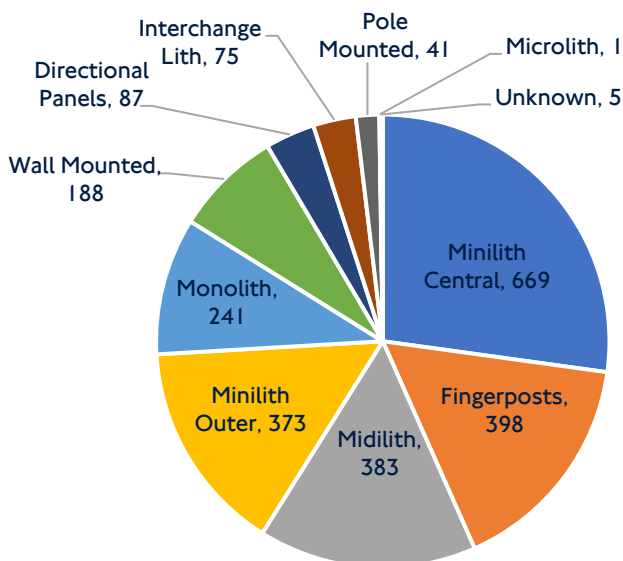
Introduction

In 2022, Transport for London undertook a London-wide audit of Legible London wayfinding signage. This has provided a snap-shot of current Legible London signage across the Capital together with an initial assessment of sign condition. The audit is also helping to inform possible areas where further Legible London signage could be beneficial for pedestrians, where there are maintenance challenges and how the various delivery partners can work together to improve processes. Results from the Legible London audit are being shared with all London boroughs, as well as the stakeholders that help deliver Legible London.

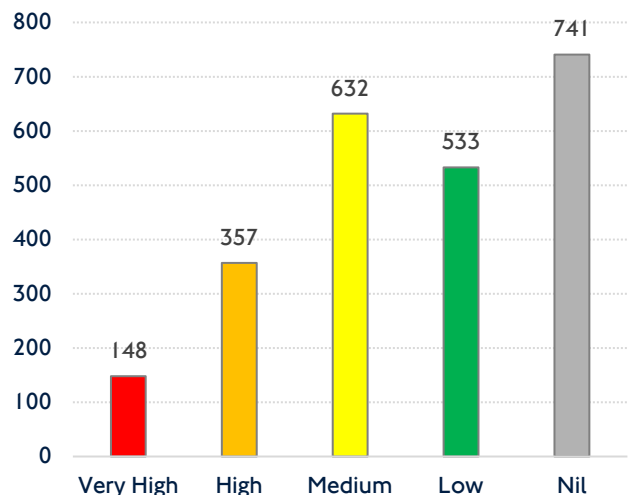
Summary of Legible London across London

- There is a record of 3,017 Legible London signs across London¹ (as of November 2022).
- The majority of the signs are in situ (2,461 of the 3,017), with 556 signs currently recorded as missing.
- In terms of general maintenance and/or repairs of the signs in situ, 6.1% signs are classified as 'Very High' priority, 14.8% signs are 'High' priority and a further 48.3% are either 'Medium' or 'Low' priority. 30.7% signs are recorded as requiring no current maintenance.
- The majority of the Legible London signs are recorded as borough assets, with 438 currently recorded as being TfL assets.
- Of the signs in situ, 42.3% are Miniliths, 15.6% are Midiliths and 9.8% are Monoliths. Fingerposts make up 16.2% of the signs.

Legible London Sign Type



Signs by General Maintenance Priority



1. A total of 2,967 Legible London assets were recorded through the audit. An additional 50 Interchange liths are recorded on LLAMA at DLR stations which were not captured as part of the LL audit.



London-wide Legible London audit

Illustrations of sign condition and general maintenance

The photos below provide examples of how some of the Legible London signs across London currently look based on the General Maintenance Priority rating. It is recommended that those signs listed as 'Very High' or 'High' priority on the borough audit spreadsheet are urgently reviewed.

Very High priority

Typical issues:
Missing map panel
and excessive graffiti



High priority

Typical issues:
Graffiti, stickers and
gum residue



Medium priority

Typical issues: Bird
droppings and slight
graffiti



Low priority

Typical issues:
Stickers residue;
overgrown vegetation



Overview of missing signs

A number of signs were noted as missing as part of the audit process, which may be due to a number of reasons such as signs being damaged, repaired or removed due to development.

Of the 556 missing signs, 153 are Fingerposts, 89 are Minilith Central signs, 67 are Minilith Outers, 61 are Monoliths, and 60 are Midilith signs. A further 27 are Pole Mounted signs, 25 are Wall Mounted signs and 12 are Interchange Liths. The remaining 43 assets are either unknown sign types (39) or lesser used sign types (4).



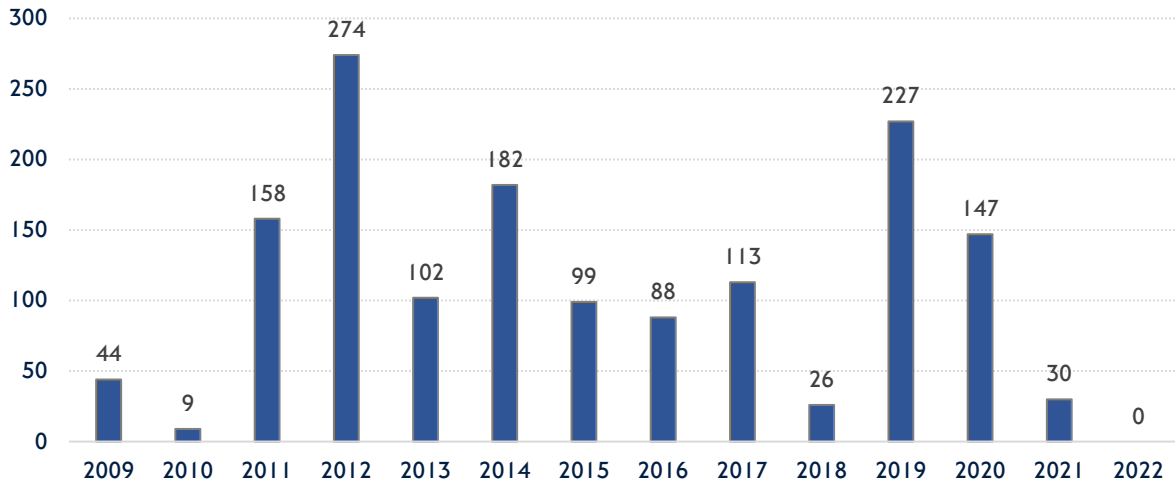
London-wide Legible London audit

Age and content of the Legible London signs

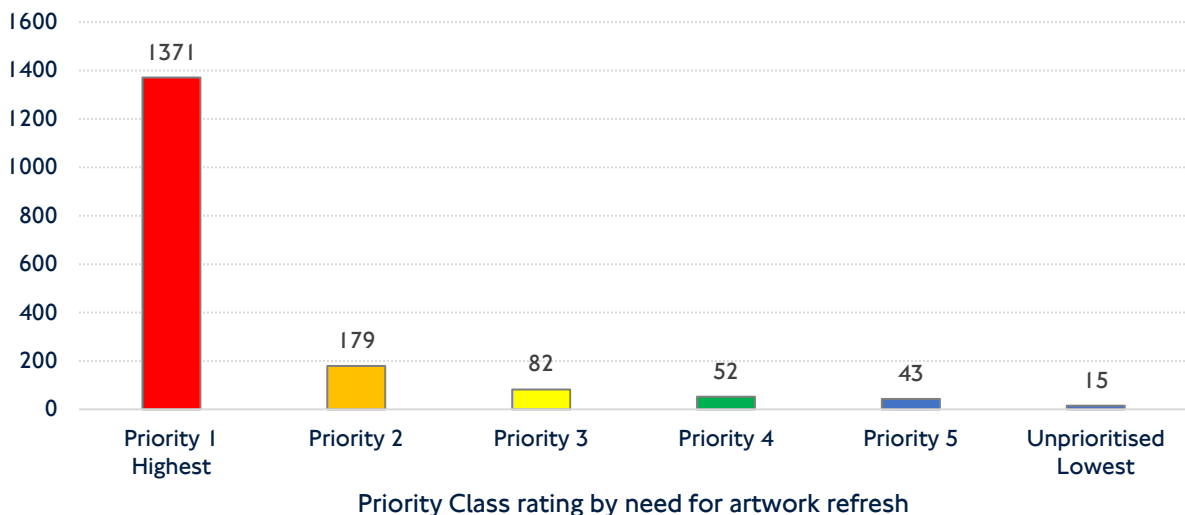
Based on data collected through the on-street audit and other records available, the graphs below provide a guide to the age of the sign artwork and how up-to-date any map content is.

The first graph shows the year when the sign artwork was produced (note: not all signs may be listed in this analysis if its not possible to determine a production date). The second graph shows the Priority Class analysis for the map panel artwork – this is a new feature in LLAMA and identifies and scores any updates and changes made to the Legible London base map since the map artwork was produced. Signs can then be classified into six priority classes – Priority 1 to 5 plus Unprioritised – to provide a guide to determine where on-street map content may need refreshing (Priority 1 being the highest need for artwork updates).

Year of Sign Artwork Production



Priority Class of Map Panel Content





London-wide Legible London audit

Location of Legible London signs

The map below provides an illustration of where the current Legible London signs are across London (as shown in LLAMA).

