

Justice Matters: Disproportionality

MOPAC Evidence & Insight

March 2018



MAYOR OF LONDON

OFFICE FOR POLICING AND CRIME

Are all partners on the same page?

Across organisations and available data, there are multiple ways in which ethnicity is recorded and defined.

Census data – the Office for National Statistics

Census data categorises identity and ethnicity in a number of ways. The main ethnic groupings used are illustrated in the table below. In addition, the Census data includes information related to *religion*, *English spoken as the household language*, *national identity* (UK only) and *country of birth*. For the latter, this covers the home nations, Republic of Ireland, EU member states (grouped) and other.

ONS also publish the *Annual Population Survey* which includes Nationality data indicating specific countries grouped: Africa, Australia & New Zealand, Bangladesh, Caribbean, Central & South America, EU, India, Middle East, Other Europe, Pakistan, South Asia, UK, USA & Canada.

White	Mixed	Asian	Black	Other
English/Welsh/ Scottish/Northern Irish/British	White and Black Caribbean	Indian	African	Arab
Irish	White and Black African	Pakistani	Caribbean	Any other ethnic group
Gypsy or Irish Traveller	White and Asian	Banglade shi	Other Black	
Other White	Other Mixed	Chinese		
		Other Asian		

Ministry of Justice

Similarly to the Census groupings, MoJ published data releases group ethnicities as follows: White, Black or Black British, Asian or Asian British, Mixed, Chinese or Other.

Police

There are two ways in which ethnicity is recorded by police on the crime recording system The first **'Identity Codes' (IC)** are for the recording of apparent ethnicity based on an officer's visual assessment of the victim, offender or subject of stop and search. These are: IC1 – White Northern European, IC2 – White Southern European , IC3 – Black, IC4 – Asian, IC5 – Chinese Japanese and other south Asian, IC6 – North African or Arab.

In addition, there is also the option for **self defined ethnicity** which is broadly in line with those used by MoJ with additional mixed categories. Nationality is recorded on police systems, however this is not mandatory.

Is this enabling effective understanding, learning and conversations with communities.

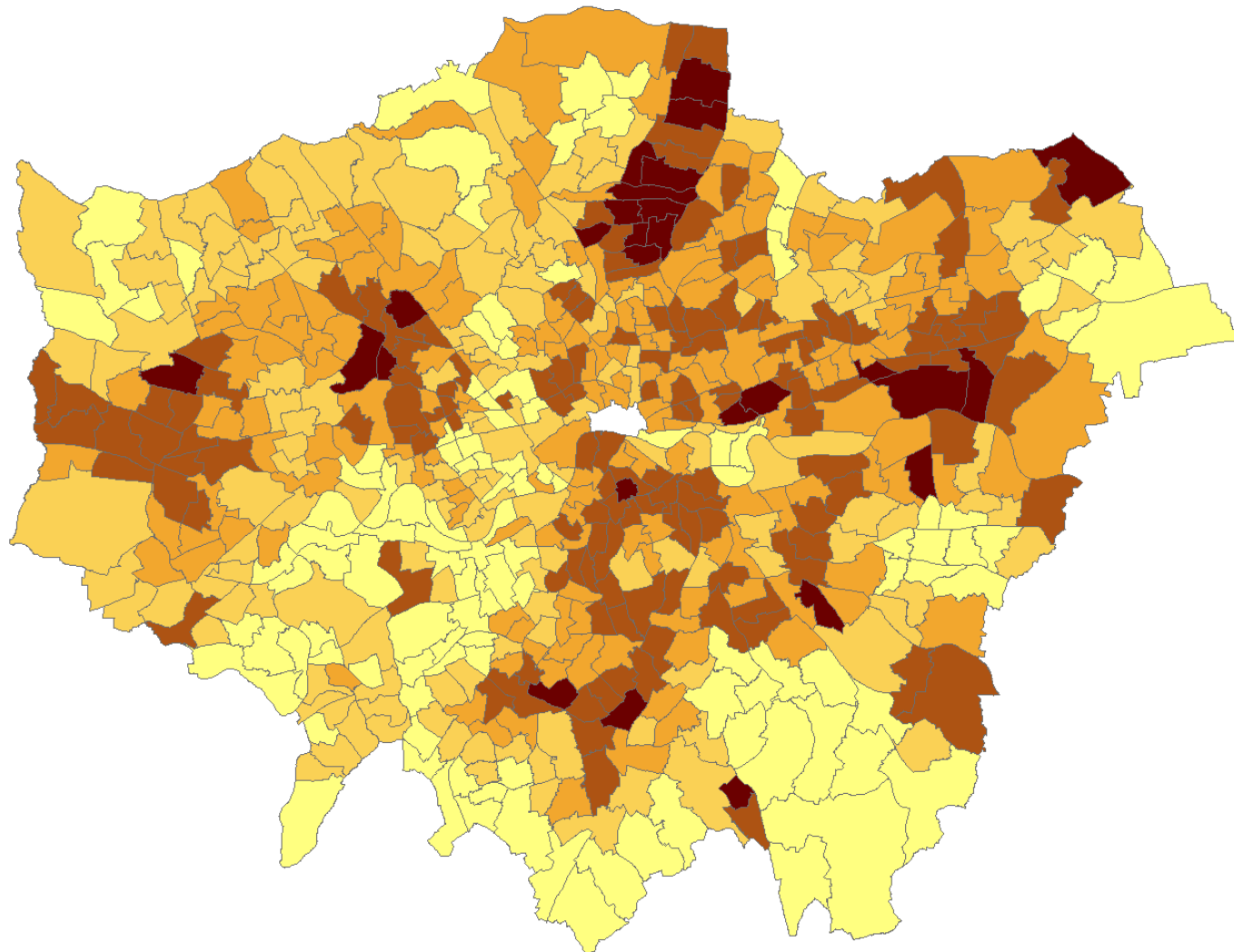
London is a diverse global city

- The current London population of **8.9 million** is predicted to rise to over **10 million** in the next 20 years.
- By 2020, London's population will have nearly increased by the size of its most populous boroughs, meaning that **1 in 7** people living in the UK will live in London.
- Borough population density in 2017 varied from approximately 2,000/sq km in Bromley to 15,000 in Islington. Increases of between 4% (Richmond) and 25% (Tower Hamlets) are expected by 2030.
- Inequalities exist in many areas (ie., Within London young black males are over represented in admissions to psychiatric units)
- Going forward, is predicted that there will be greater numbers of both **younger** and **older** Londoners.
- By 2020, 1 in 8 people in London will be **over 65** (increasing to 1 in 7 by 2030).
- There has been an increase of over 200k under 10s (over the past 8 years), many of whom will be growing into adolescence during this mayoral term where 1 in 6 Londoners will be aged between 11-24.
- By 2020 nearly 30% of Londoners will be between 11-24 or over 65. These age groups historically present the largest challenge to policing from an offending and vulnerability perspective.
- A slow move to more diversity – In 2011, 40% of London was BAME, 2017 population projections show that 43% of London's population are BAME, with the proportion projected to increase to 46% by 2030.
- Borough variations within ethnicity, ranging from: 73% BAME within Newham, to 16% BAME within Richmond.
- This diversity is higher for under 18 year olds. In 2017, 56% of 0-17 year olds are BAME with this projected to increase to 59% in 2030.

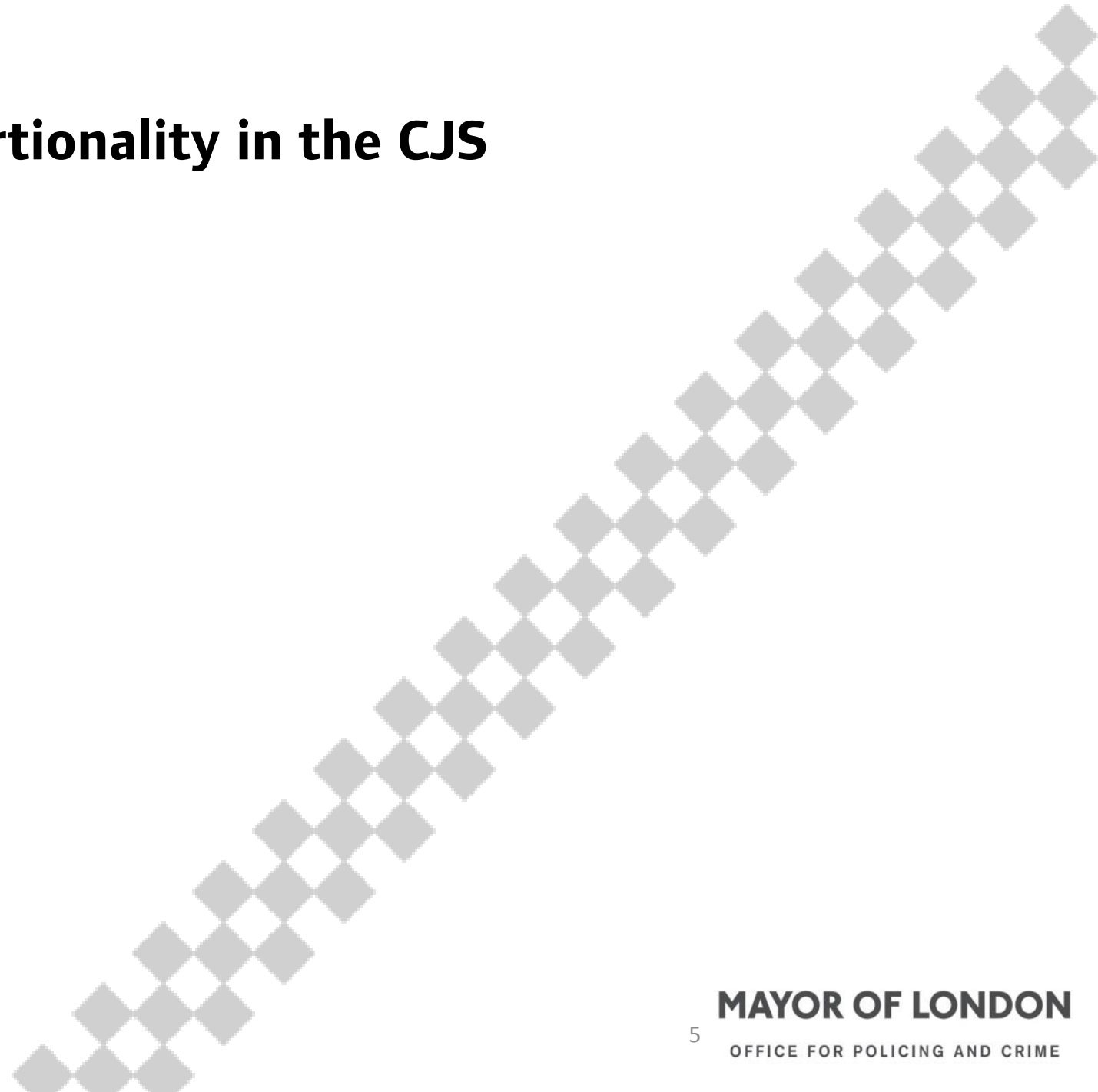
A window into London - The Vulnerable Localities Profile

The VLP is a composite index based on [academic methodology](#), that combines London-centric indicators of **deprivation, population, crime and educational attainment** to identify wards vulnerable to issues of community cohesion.

- Of the top 10% (63 wards), over half are within just six boroughs: Haringey, Enfield, Barking & Dagenham, Brent, Croydon and Southwark.
- In Haringey and Enfield, over a third of all wards in each borough are within the top 10% for vulnerability.
- **Over 50% of the population within the top 10% most vulnerable wards are identified as BAME.**
- In contrast, for the least vulnerable 10% of wards, only **18% of the population are BAME** (2011 Census data).
- Individuals living in the most vulnerable Locations are ***three times more likely*** to be a victim of crime.
- **The issue is far wider than only policing.**



The Lammy review and Disproportionality in the CJS



Origins of the Lammy Review

- In January 2016, David Cameron asked David Lammy MP to lead an independent investigation into evidence of possible bias against black defendants and other minorities
- The expectation was that the review would be data-led and would consider evidence from the point of arrest onwards
- This work followed on from Baroness Young's review into 'improving outcomes for young black and Muslim men in the criminal justice system' and more recently the Cabinet Office has published a Race Disparity Audit which includes policing and the criminal justice system.
- The Lammy Review was published in September 2017 and contained 35 recommendations to tackle racial disproportionality in the criminal justice system

The Lammy Review – Key Findings

DATA – YOUTH JUSTICE – TRUST – COMMUNITY INVOLVEMENT

- Ethnicity data collection by criminal justice agencies must be improved, standardised and open to outside scrutiny to ensure that agencies must “explain or change” when evidence of inequality is found
- Rising disproportionality in the youth justice system is a major concern, that if not sufficiently addressed will mean this cohort become the next generation of adult offenders
- BAME defendants were consistently more likely to plead ‘not guilty’, fuelling disproportionality further into the criminal justice system. This is linked to a lack of trust that some BAME individuals have in the CJS
- There is a disconnect between the criminal justice system and communities, and that more should be done to bring the two together to improve outcomes for BAME individuals

The Government Response to Lammy – What Next?

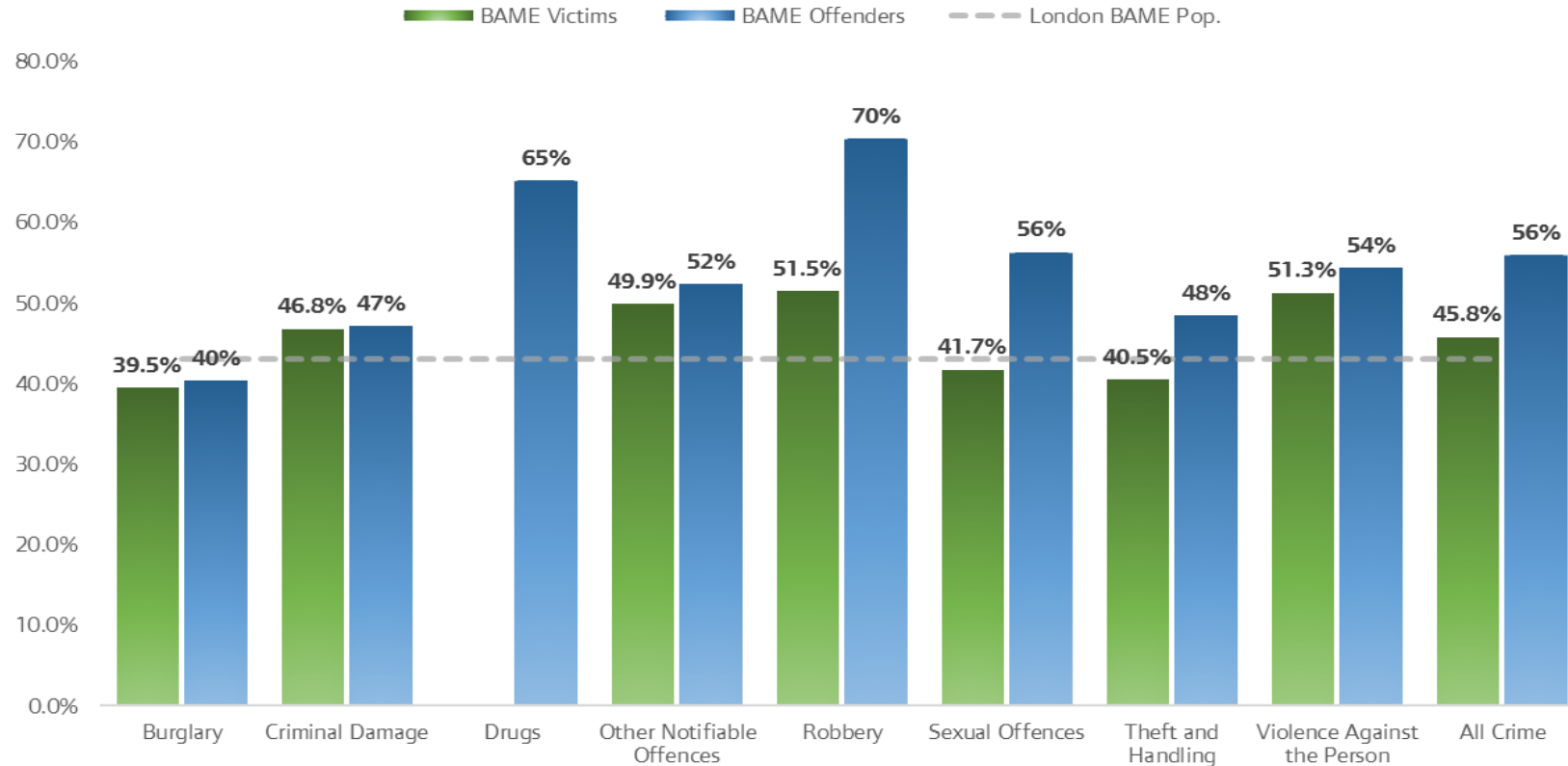
- The Ministry of Justice immediately accepted the principles of “explain or reform” and the need for more and better data
- Since publication, the MoJ approach has been to respond quickly, to do so on every aspect of the review, and to work with the spirit of any recommendations where they can’t follow the letter
- The response was published in December 2017, and details the governance structure that will be used to support and monitor progress of this issue through an internal MoJ ‘Race and Ethnicity Board’, led at Director General level.
- The Ministry’s work on Lammy fits into wider work on race disparity that is being driven by the Cabinet Office and the Race Disparity Unit, and reporting to a new Inter Ministerial Group on race disparity.

First contact with the criminal justice service - policing



BAME over-represented as victims and offenders across many crime categories

BAME proportions for offenders and victims of crime vs BAME population



2017 Youth Population:

46% White

56% BAME

2017 Population projection London:

57% White

43% BAME

- 2017 population projections show that in London, **57%** of the population are classified as white; **43% identified as BAME**.
- Overall, a slight over representation regarding *BAME victims of crime* and a much higher disproportionality regarding offenders.
- BAME **victims** especially over represented for offences of Robbery and Violence against the person.
- BAME **offenders** particularly disproportionate within Drug, Robbery, Sexual offences and Violence against the person.

Disproportionality across knife crime

All knife crime

In 2017:

- Half of all knife crime offenders were BAME, and this has increased slightly between 2008 to 2017 (from 44% to 50%).
- Within this total, half were under 25, of these; the majority (90%) are male and nearly two thirds BAME.
- In 2017, **half of knife crime victims** were BAME (50%) this proportion has increased from 44% in 2008.

Knife crime with Injury

In 2017:

- 83% of offenders male, 35% aged between 17-24 and 69% BAME.
- 78% of victims male, 32% aged between 17-24 and 55% BAME.

Knife Possession

- In 2017, over half (53%) of possession of knife suspects were black. 37% of all suspects were black males under 25. Arrests for offensive weapons following stop and search for any reason shows that 56% were black last year.

Homicide

In 2017: there were a total of **133 victims of homicide in London**. This is an increase of 24 compared to 2016.

- 88 (66%) of these were committed with a knife or bladed article.
- 8 knife homicides were related to domestic abuse, 3 of these victims were BAME.
- Victims of **Non-domestic** knife homicide were almost exclusively male (75, 94%), **of these - 64% (48) were BAME.**
- Looking deeper at those victims aged 20 or under - 68% (19) were black males.

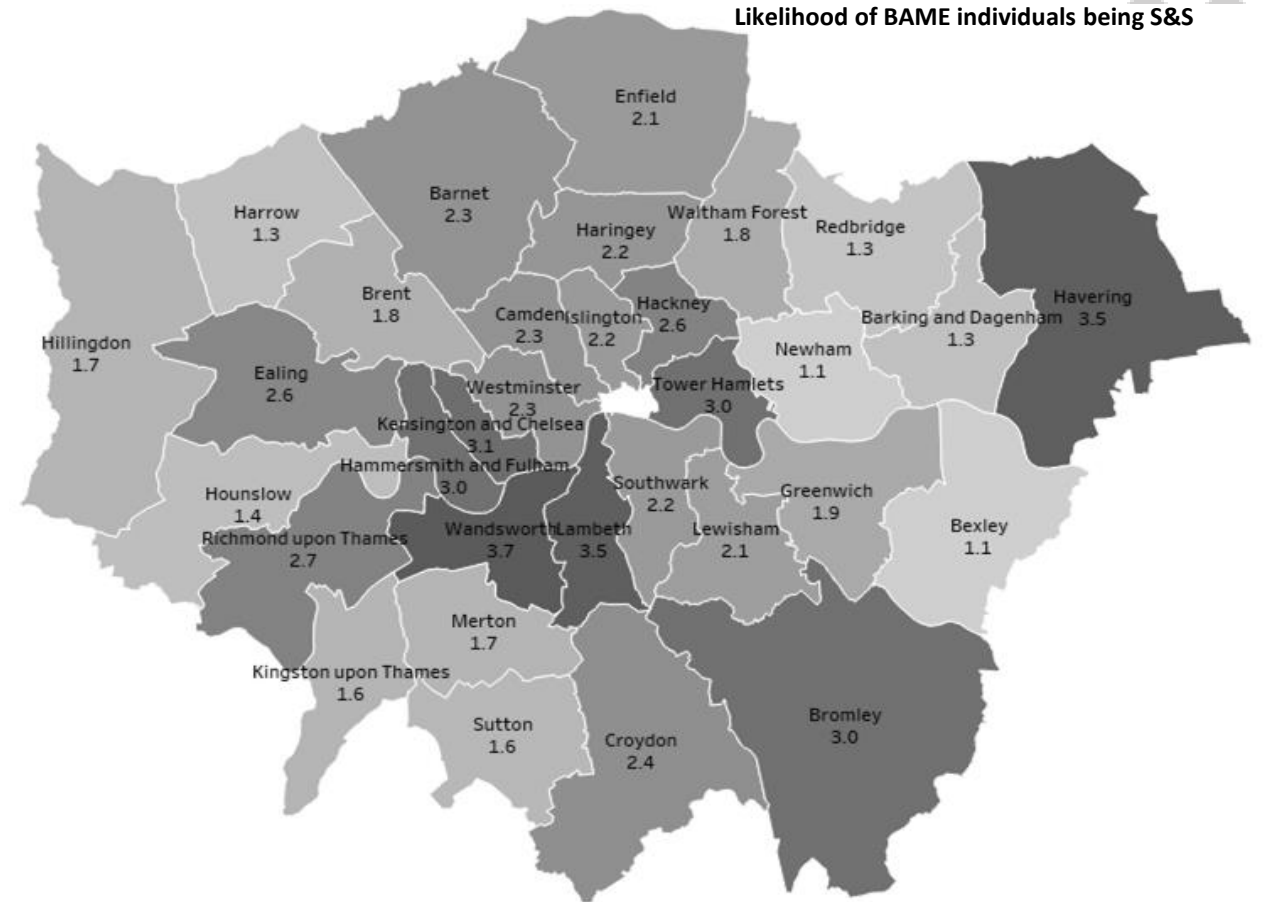
Disproportionality and variation within Stop and Search across London

Overall disproportionality

- 129,337 recorded Stop and Searches within the MPS during 2017;
- 61% of individuals were BAME; 42% were Black.
- Overall, BAME more than **twice as likely** to be Stopped and Searched when compared to White (same for teenagers and under 25s); Black more than **four times as likely**.
- BAME individuals were almost **two and a half times** more likely to be Stopped and Searched for Drugs and **four times** as likely to be Stopped and Searched for Weapons; Black individuals were almost **9 times** more likely to be Stopped and Searched for Weapons.
- Between 2014 and 2017 the likelihood of being Stopped and Searched if you are BAME has increased (from x1.5, to more than x2 times as likely).
- Arrests are more proportionate. For overall Stop and Search, the arrest rate is **19.2% (for any reason) - white individuals is 19.1% and BAME is 19.3%** The arrest rate for BAMEs from Weapons searches is 22% compared to 26% of White individuals.

Geography and disproportionality

- Overall disproportionality highest in: Wandsworth (x3.7), Lambeth (x3.5), Havering (x3.5). Some boroughs more proportionate (i.e., Newham).
- BAME individuals 11 times more likely to be Stopped and Searched in Kensington and Chelsea (29% BAME population) for Weapons than White individuals.
- Black individuals were 31 times more likely to be Stopped and Searched in Kensington and Chelsea for Weapons, however only 12% are arrested.



Young and BAME groups less positive towards Stop and Search

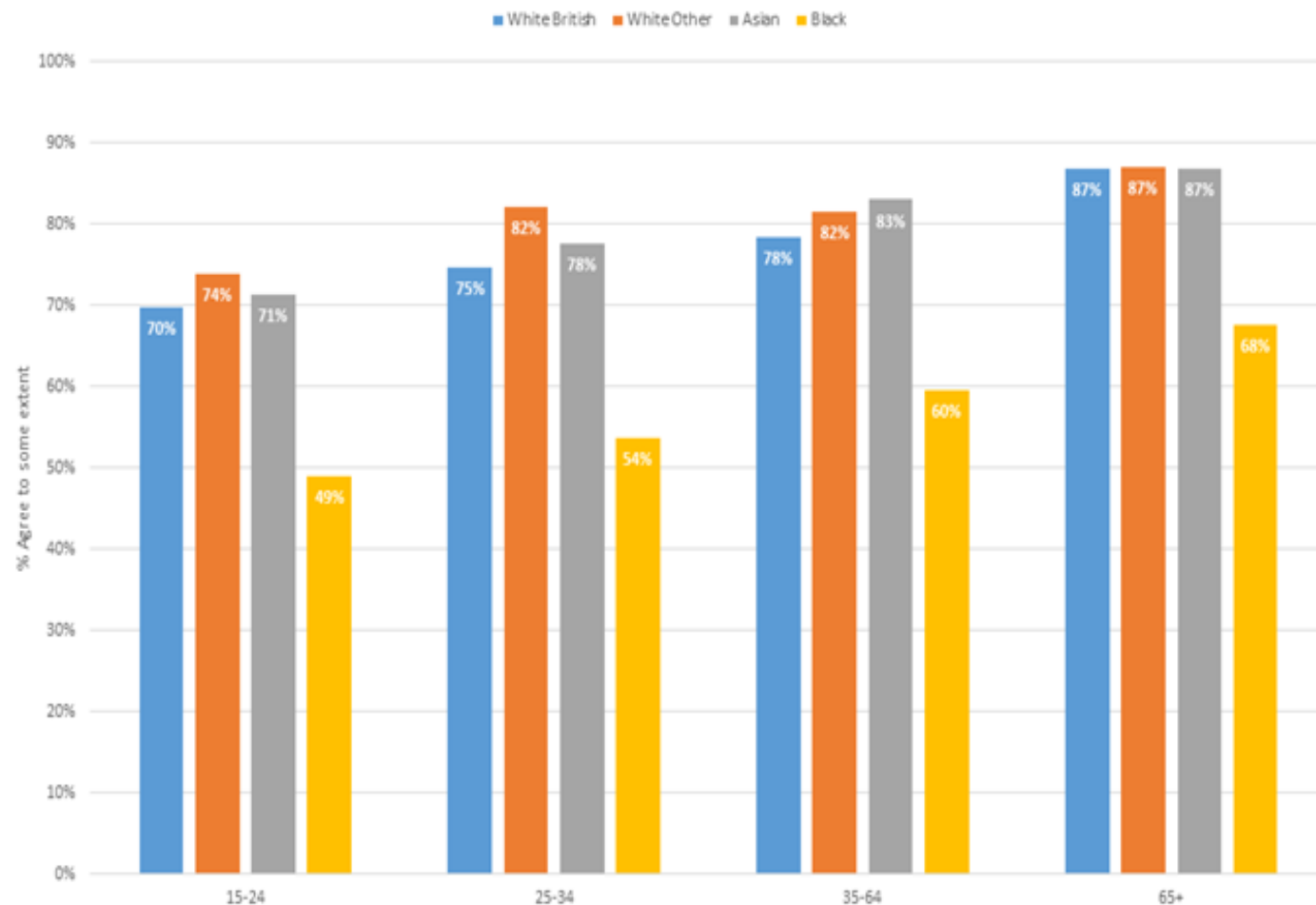
Generally, the majority of adult Londoners agree with the use of *Stop and Search* (77% - rolling year to date, approx. 12,800 Londoners) and perceive this to be used fairly (76% - FYTD).

Notably, younger and BAME groups are ***far less positive towards Stop and Search*** – although across all groups, perceptions do improve with age.

On a specific youth survey (ages 11-18) black youths far less likely than white to report Stop and Search makes them feel safe (Black 50% versus White 62%) (n=9492).

Overall, quality of the encounter essential. Previous research found differences in how youth and BAME individuals ***experience*** the stop, with findings suggesting that when compared to White individuals, BAME groups were less likely to receive a full explanation and less likely to report being fully treated with respect.

Proportion who agree police use Stop & Search powers fairly by age and ethnicity
Data from Q4 15-16 to Q3 17-18



The largest public perception inequalities continue to be seen between ethnicities

Routine data collected by MOPAC illustrate that, in particular, black and mixed respondents are significantly less likely to feel the *police treat everyone fairly, listen to the concerns of local people, or do a good job locally*. In addition, those from a mixed background also see lower results for feeling the police can be relied on to be there when needed and deal with the things that matter.

These inequalities have remained consistent over time.

		Agree the police can be relied upon to be there when needed (Relied on to be there)	Agree the police treat everyone fairly regardless of who they are (Fair treatment)	Agree the police are dealing with the things that matter to this community (Dealing issues)	Agree the police listen to the concerns of local people (Listen to concerns)	Feels well informed about local police activities over the last 12 months (Informed local)	Knows how to contact their local SNT/ward officer (Contact ward officer)	Police do a good job in the local area (Good job)	Overall Satisfaction <i>All crime groups, unweighted</i>
Weighted MPS result		76%	77%	70%	74%	45%	22%	68%	72%
Ethnicity	White British	-3%	-1%	-2%	-2%	2%	3%	0%	3%
	White Other	5%	6%	7%	4%	-6%	-4%	4%	4%
	Black	-3%	-14%	-4%	-7%	-1%	-2%	-7%	-3%
	Asian	1%	4%	3%	2%	1%	-1%	0%	-3%
	Mixed	-10%	-8%	-11%	-11%	3%	2%	-13%	-3%
	Other ethnicity	8%	2%	7%	6%	-2%	-2%	6%	0%
LGB	LGB	-4%	-8%	-7%	-6%	-3%	3%	0%	0%
	Not LGB	0%	0%	1%	-1%	0%	0%	0%	1%
Age	16-24	3%	-2%	0%	-1%	-6%	-6%	-1%	1%
	25-34	3%	1%	2%	-2%	-5%	-5%	1%	-3%
	35-44	0%	-1%	-1%	-1%	3%	2%	2%	-2%
	45-54	-4%	-3%	-2%	-3%	2%	4%	-3%	1%
	55-64	-5%	-1%	0%	0%	1%	4%	-5%	2%
	65 years +	-1%	4%	4%	4%	5%	4%	3%	14%
Disability	Disability	-5%	0%	-1%	1%	-4%	1%	-4%	-3%
	No disability	0%	0%	1%	-1%	0%	0%	0%	1%
Sex	Male	0%	0%	0%	-1%	2%	0%	1%	-1%
	Female	-1%	-1%	1%	0%	-2%	0%	-1%	2%

Source: Public Attitude Survey and User Satisfaction Survey R12 to Q3 17-18. The table above compares the weighted MPS figure to each group and highlights positive or negative change of 5 percentage points or more.