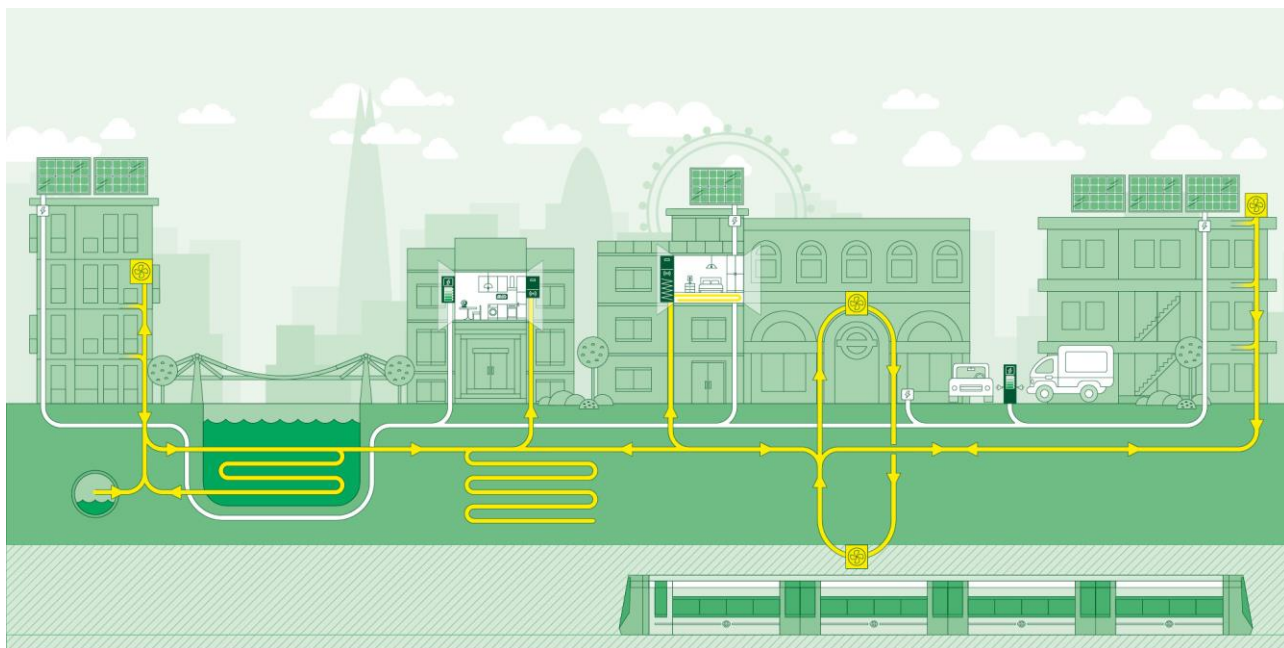




Local Energy Accelerator

Funding Application Guidance



COPYRIGHT

**Greater London Authority
November 2020**

Published by
Greater London Authority
City Hall
The Queen's Walk
More London
London SE1 2AA

www.london.gov.uk

enquiries 020 7983 4000

minicom 020 7983 4458

Photographs ©

Copies of this report are available
from www.london.gov.uk

CONTENTS

| | | |
|-------------|--|-----------|
| 1. | Introduction and outcomes of the Local Energy Accelerator | 4 |
| 2. | Funding available | 10 |
| 2.1. | Eligible organisations | 10 |
| 2.2. | Funding terms and payment | 11 |
| 3. | How to Apply | 12 |
| 3.1. | Support in preparing your application | 12 |
| 4. | Application guidance and assessment criteria | 13 |
| 4.1. | Completing the application form – summary | 13 |
| 4.2. | Completing the application form – details | 14 |
| 4.3. | Assessment criteria | 16 |
| 4.4. | Assessment process | 18 |
| 4.5. | Delivering projects safely during the COVID-19 pandemic | 20 |
| 4.6. | Data protection, freedom of information and transparency | 20 |

1. Introduction and outcomes of the Local Energy Accelerator

1.1 Policy Context

The COVID-19 pandemic has faced London with its most challenging period in recent history and London's recovery will be based on delivering a Green New Deal to create good jobs and skills. Decarbonising quicker, in a fair and cost-effective way with less disruption for all Londoners is critical for a green economic recovery.

The Mayor has set out his ambition for London to be net zero carbon by 2030 to tackle the climate emergency. To achieve this, we need to accelerate the number of clean local energy projects operating in London.

The Mayor also has a target of 15 per cent of London's energy demand to come from clean and renewable, locally generated energy by 2030. This target is backed by the objective to develop clean and smart, integrated energy systems utilising local and renewable energy resources.

Heating and powering London's buildings account for around three quarters of the city's carbon emissions. Heating alone makes up nearly 50% of London's energy demand so decarbonising heat will have a considerable impact on the cost and rate at which London can achieve net zero, whilst reducing energy bills, addressing cold, damp homes and boosting green jobs.

The Mayor's new £6m Local Energy Accelerator (LEA) Programme will transform the way London generates, supplies and uses clean local energy in buildings and transport. Through the LEA, public and private organisations will be provided with free-of-charge expertise and project support to bring their clean and flexible energy projects into operation. This will contribute significantly to the Mayor's 2030 commitment and clean energy objectives (reducing carbon, bills and fuel poverty), whilst increasing jobs in a thriving new sector.

1.2 Introduction to the Local Energy Accelerator Programme

Background

The LEA is part of the [Mayor's Energy for Londoners](#) programme and one of three of the Mayor's 'accelerators'¹ which are designed to speed up the pace of cutting carbon emissions.

With the backing of the [European Regional Development Fund](#)², the Mayor's new £6m Local Energy Accelerator will increase the local provision of clean and renewable energy capacity through ultra-low carbon heat and power projects. In doing so, the programme will help realise a green economic recovery from the challenges imposed by the COVID-19 Pandemic by creating jobs and reducing bills.

Overview

The LEA, which will operate to July 2023, will provide public and private sector organisations with end-to-end technical assistance and project support through a framework of expert suppliers and a free-of-charge Programme Delivery Unit.

The programme builds on the Mayor's successful Decentralised Energy Enabling Programme (DEEP), which, since 2016, has provided expertise and support to 19 organisations for over 40 individual, local energy projects. This has included funding expertise for all stages of implementation; from project definition to operational delivery.

The LEA will support projects that enable decarbonisation, meet the Mayor's commitment to be net zero carbon by 2030, deliver significant carbon savings, demonstrate economic and social benefits and, where relevant, be scalable and replicable. This will include local carbon heat networks, clean energy sources and demand response flexibility including (but not limited to): heat pumps, hydrogen, solar photovoltaics, flexibility assets like thermal and power storage and integrated smart charging for electric vehicles.

Support for existing projects may be considered where it would increase the scope or scale and/or deliver greater carbon savings and/or deliver cost savings to residents and/or businesses.

¹ The other two Accelerator Programmes are the Retrofit Accelerator – Homes and Retrofit Accelerator – Workplaces

² The European Regional Development Fund (ERDF) is a fund allocated by the European Union to strengthen economic and social cohesion in the by correcting imbalances between its regions.

Outcomes

The LEA will:

- Deliver target annual savings of 20,000 tonnes of carbon dioxide equivalent (tCO₂e) per annum and 3MW of installed renewable energy³ capacity by July 2023⁴.
- Achieve significant carbon emission savings and increase renewable energy generation capacity beyond the end of the programme.
- Increase the number of local jobs in the clean energy sector.
- Bring stakeholders together to raise the skills, capacity and capabilities of the public sector for design, build, operation and maintenance models, including public-private partnerships or procurement of private sector delivery.
- Reduce fuel poverty through increasing flexibility of energy demand to reduce energy costs.
- Identify strategically important distributed energy projects using clean secondary heat sources and renewable energy and bring them to market.
- Facilitate the development of area-wide district energy and smart grid networks.
- Enable expansion of district energy networks by facilitating the planning for and integration of cleaner locally available secondary heat sources and renewable energy.
- Build confidence in and de-risk commercial markets.
- Generate market efficiencies with common practices and standards.
- Inform and influence local and national Government policy and funding to accelerate achievement of net zero.

³ Definition of Renewable Energy: 'energy from renewable sources' means energy from renewable non-fossil sources, namely wind, solar, aerothermal, geothermal, hydrothermal and ocean energy, hydropower, biomass, landfill gas, sewage treatment plant gas and biogases as per Article 2(a) of the 2009 EU Renewable Energy Directive <https://www.legislation.gov.uk/eudr/2009/28/body/adopted>.

Energy resources derived from fossil fuels, waste products from fossil sources or waste products from inorganic sources are excluded.

⁴ with annual CO₂e savings and installed MW capacity estimated during the full calendar year after installation

What LEA will fund

The Mayor's LEA programme will fund **expertise from a framework of suppliers** for public sector⁵ and private sector organisations to help them bring clean and flexible local energy projects into operation across London. LEA will also have a dedicated Programme Delivery Unit (PDU) providing **free-of-charge project management support** to all organisations receiving funded expertise.

This support is detailed as follows.

Expertise from a framework of service providers

LEA funds technical, commercial & financial, legal and strategic expertise to support work involved in the following stages of energy projects:

- Energy Masterplanning and Local Area Energy Plans⁶.
- Feasibility studies
- Business plans
- Detailed project design/development
- Procurement support
- Commercialisation support
- Day-to-day intensive project management support for projects at commercialisation and construction stages, where this support cannot be provided by the PDU, funded by any other means or provided in-house.

Support with more than one stage of the project can be applied for at the same time, for example feasibility and business planning. Effort and funding will focus on the later stages of the project, as defined above, so business plans and onwards, to ensure more projects are constructed and operating in London by July 2023.

The current Decentralised Energy (DE) Framework of suppliers procured by the GLA was established in 2017 specifically for DEEP. Organisations who receive support from the

⁵ London Boroughs, educational establishments and the Greater London Authority and Greater London Authority Group.

⁶ Note: we will only be funding a limited amount of this early stage work, as we will prioritise funding applications which are at later stages of project definition and delivery.

LEA must use the framework to procure the expertise they need until its expiry date (June 2021); a new Local Energy (LE) Framework is currently being procured and will replace the DE Framework.

This DE Framework has four categories; Technical, Commercial & Financial, Legal and Strategic. There are 38 service providers on the Framework. For more details you can request a copy of the DE Framework Briefing Pack from the GLA by emailing LEA@london.gov.uk

The DE and future LE Framework, can also be used by public and private sector organisations outside of London, subject to the GLA being notified (see <https://ted.europa.eu/TED/notice/udl?uri=TED:NOTICE:375500-2017:TEXT:EN:HTML> for the list of organisations who can use it).

Programme Delivery Unit

An expert PDU will provide end-to-end project management support to all organisations receiving funded expertise. Support and assistance will help accelerate the rate at which projects are developed and delivered. They will meet organisations on a regular basis to support and monitor progress. Meetings will be conducted remotely in-light-of COVID-19.

Project eligibility

Clean and flexible distributed energy projects and networks are critical to decarbonising London's energy system and delivering net zero carbon by 2030. Projects that transform the way London generates, supplies and uses clean local energy in buildings and transport will be eligible.

LEA wants to support projects that are strategically important for London's good and fair growth, development and infrastructure needs. For example, district energy networks using secondary heat sources, like water, sewage and London Underground infrastructure, in heat network priority zones; renewable energy generation, storage and demand flexibility in areas of electricity grid constraint; and priority areas for transport electrification.

LEA will fund expertise for progressing clean and low carbon district energy networks that provide a clear evidenced strategy to zero carbon and building-level heating systems that incorporate, for example:

- Ground, Water and Air-Source Heat Pumps.
- Secondary heat sources including geothermal, water and sewage, solar thermal, existing energy from waste facilities, London Underground, data centres and industrial processes.

- Thermal storage.
- Fuel cells.

District energy networks and development-level heating systems should be designed in accordance with the GLA's heat network policies, consider relevant information contained in the London Heat Network Manual and the CIBSE/ADE Code of Practice for Heat Network, and follow the intend to publish [London Plan](#) heating hierarchy in respect to heat sources to strive for the lowest carbon solutions now and into the future.

London Plan heating hierarchy sets out an approach to identify heat sources for a major development or a network that will help ensure that the final heating solution is as low carbon as is possible.

Major development proposals within Heat Network Priority Areas should have a communal low-temperature heating system and the heat source for the communal heating system should be a local existing or planned heat network, where one exists. If not, then it should follow the heating hierarchy below with a preference for connection to:

- 1) use zero-emission or local secondary heat sources (in conjunction with heat pumps, if required)
- 2) use low-emission combined heat and power (CHP) (only where there is a case for CHP to enable the delivery of an area-wide heat network, meet the development's electricity demand and provide demand response to the local electricity network)
- 3) use ultra-low NOx gas boilers

Please refer to the GLA Guidance Note (December 2019): District heating networks, emissions factors and the London Plan, for more information on the GLA's heat networks policies including heat network decarbonisation (this note can be provided on request).

Types of projects that are eligible could involve, for example, a heat network using ground source heat pumps as the renewable heating source and a thermal store, with smart energy management controls to increase flexibility and efficiency of the heat network.

The Mayor's LEA will play a central role in helping to achieve net zero carbon by 2030. The energy sources used to supply heating to homes, businesses and industrial users will need to change and this will be through a managed transition from natural gas to low carbon heat sources. The decarbonisation and expansion of existing heat networks along with the creation of new low carbon heat networks will support this transition by using increasing-amounts of renewable and local waste heat sources.

All LEA supported projects which have a natural gas component will be required to develop a 'road map' detailing a decarbonisation pathway to ensure that natural gas is

phased out. This is consistent with the requirement set out in Policy SI 3 of the Mayor's 'Intend to Publish' London Plan and its 'Heating Hierarchy'.

In addition, the Government's Future Homes Standard will require new build homes to be future-proofed with low carbon heating and increased levels of energy efficiency from 2025. It is anticipated that heat pumps and heat networks, where appropriate, will be the principal means of meeting this standard.

LEA will fund expertise for progressing clean local power networks and building-level electricity systems that involve, for example:

- Solar photovoltaics.
- Fuel cells.
- Battery storage.
- Energy system controls and management, e.g. demand side flexibility.
- Integrated smart charging for electric vehicles.

The GLA is keen to discuss your projects at **pre-application stage** to ensure the right mix of clean, flexible energy technologies are included in your applications.

2. Funding available

A total of £3.7m is available for eligible organisations (see 2.1 below) between November 2020 and 31st July 2023, to fund expertise from service providers through the DE Framework to progress local, clean energy projects to operation.

Funded projects must be completed **no later than the 31 July 2023**. However, as projects need to be installed and operating by this date for ERDF and GLA outputs to be achieved, we will prioritise funding for projects that will be completed ahead of this date.

2.1. Eligible organisations

Applications for LEA funding expertise and free-of-charge project management support are currently open to:

- All London Borough Councils.
- Educational establishments.

- Private sector organisations.
- The Greater London Authority (GLA) and the GLA Group (London Fire and Emergency Planning Authority (LFEPA), Transport for London (TfL), Mayor's Office for Policing and Crime (MOPAC), Old Oak and Park Royal Development Corporation (OPDC) and London Legacy Development Corporation (LLDC).

Applications for funding expertise must be from a formally constituted organisation⁷ with a bank account and able to enter into legal contracts. **You cannot apply as a private individual.**

Note: as part of the LE Framework procurement we plan to add Housing Associations and NHS Trusts to the list of public sector organisations who can apply for funding expertise and project management support.

Projects funded by LEA must be **within Greater London only.**

2.2. Funding terms and payment

Funding offers to successful applicants / funded recipients will be made subject to them accepting and signing a funding agreement. This funding agreement must be signed before a supplier is selected, via mini-competition, from the DE Framework.

Payments will be made to the selected DE Framework service provider for their work according to a schedule to be agreed between all three parties (the GLA, the LEA beneficiary of support and the framework supplier) prior to the project starting.

The GLA will pay the net amount of the service provider's invoice only, and the LEA funded recipient will pay the VAT amount of that invoice which can be claimed back if the beneficiary is a public sector organisation.

2.3. Eligible costs

Only revenue costs are eligible, i.e. time of the selected DE Framework service provider(s). All costs should demonstrate value for money and deliver the aims and objectives of the programme. Value for money is a key assessment criteria for deciding who receives funded expertise and support (see section 4.3).

2.4. Ineligible Costs

- Any procurement costs incurred by the LEA beneficiary of support

⁷ A governing document or list of governing members, a purpose, and a set of rules.

- Time and expenses incurred by the LEA supported recipient to deliver the project. The recipient must account for and demonstrate capacity and capability is in place, i.e. project sponsor and manager. The LEA PDU will be available to provide tailored project management support to meet organisations needs but is in addition to internal resourcing of the project.
- Capital cost of works.
- Projects that have already started.
- VAT costs.

3. How to Apply

All LEA projects must be completed, and payments made by the GLA to the Framework service provider, no later than 31st July 2023.

There is no application deadline. However, once all funding has been allocated, applications will no longer be accepted.

3.1. Support in preparing your application

We are happy to answer any questions you have about the application process, your project and whether it could be eligible for LEA-funded expertise and support. Please email lea@london.gov.uk if you have any questions, need clarifications or want further advice.

We will be holding optional information webinars to guide organisations on the application process, on the following dates:

- 9 December (2 - 4pm) 2020
- 11 January (10.30am - 12.30pm) 2021

This will be an opportunity to hear more about the aims of the Programme, the application process and assessment criteria. It will give organisations a chance to ask questions and receive advice on completing an application.

Section 4 of this guide provides more detail on completing the application form and the assessment criteria.

4. Application guidance and assessment criteria

This section outlines the application requirements and assessment criteria and provides advice on completing the application form. **Please read this in detail before starting your application.**

4.1. Completing the application form – summary

The application form is an excel document which is split into seven sections. The completed form will be used by the GLA to assess project suitability for LEA free-of-charge expertise. The application form can be found [here \(hyperlink to be added\)](#).

The application form comprises:

1: Contact details – these details will be used for the purpose of contacting you about your application and, if successful, for contact details during the project. We will not share these contact details with anyone outside of the GLA without your prior written (emailed) consent.

2: Project details – these questions provide an overview of your project, how your project meets the aims of the programme and brings benefits to your local area/London. It also requests the estimated outputs.

3: Requested funding – this is a simple tab to enter the funding amount requested for the project.

4: Scope and work to date – this section is about previous work or studies which have led to this application and the scope of the project for this application. It also covers your organisation's reasons for the project and whether you have carried out (or will carry out) energy efficiency measures to improve the outcomes of the project.

5: Project Plan – this section is to enter the timings of the procurement and project delivery milestones. The chart will auto complete to provide a visual representation of your project plan.

6: State Aid – this section asks whether the funding is subject to state aid and within EU state aid rules. UK national government guidance on state aid is given in <https://www.gov.uk/guidance/state-aid>. The European Social Fund Guidance can be found at: <https://www.gov.uk/government/publications/european-social-fund-state-aid>.

7: Equality, Diversity and Inclusion – the GLA is committed to proactively encouraging diverse organisations to participate in its programmes. It will provide a level playing field of opportunities for all organisations including Small and Medium Enterprises and Black, Asian and Minority Ethnic businesses and other diverse suppliers. Consistent with its obligations as a Best Value authority and in compliance with EU and UK legislation, the GLA's procurement process will be transparent, objective and non-discriminatory in the selection of its suppliers. The GLA will actively promote diverse suppliers throughout its supply chains. This section asks how your organisation as well as those involved in delivering the project values, embeds, promotes and improves equality, diversity and inclusion.

8: Declaration – to outline how information entered in the form and throughout the project will be dealt with and to adhere to data protection regulations.

4.2. Completing the application form – details

Intro tab: This tab is an introduction and for information only, **please read it before you start completion of the form**, but nothing needs to be entered or changed in this tab.

Completion check tab: This tab auto-completes as you enter all the information in the other tabs – please do not enter anything in this tab or change it in any way.

1: Contact details – Fields should be self-explanatory. The form asks whether senior project sponsors are willing to have a 15-20-minute phone call with officers from the GLA before a final funding decision is made. All the contacts entered in this tab must have consented to their contact details being shared with GLA officers for application purposes prior to submission of the application.

2: Project details – some assistance for certain questions is given below:

1. The LEA funded project must be located within Greater London to be eligible. Therefore, if NO is entered the project will not qualify for funding.
2. Self-explanatory.
3. The Project Overview should provide a summary of what the project is about and what it aims to achieve, in less than 150 words. A more detailed explanation of scope of the project should be given in Section 4 of the form.
4. Refer to the aims of the Programme, as given in section 1 of this guidance document.
5. Choose from the drop-down box. If you are applying for funding for more than one stage select the stage which requires the highest level of funding.

6. Self-explanatory yes/no question.
7. Self-explanatory.
8. Low/zero carbon technologies could include for example solar panels, air source heat pumps, battery storage.
9. Self-explanatory yes/no question.
10. Self-explanatory.
11. Self-explanatory.
12. We would like to understand if the project is part of a wider strategy for the area/borough and therefore of local strategic importance.
13. – 24. These questions ask for quantitative answers and will be based on estimates. We are not expecting that all the estimated values will be known and so if some are unknown then enter 'unknown'. However, we will need an estimate of carbon savings, MW renewable energy installed (if relevant) and date for installation of the project as a minimum in order to evaluate the application.

3: Requested funding

All costs entered must be excluding VAT. We have asked for the total cost of the project, which may be the same as the funding being requested or you may be able to and decide to fund part of the project yourself, e.g. if the project costs are very high. We are not requesting match funding for the project, though VAT costs must be covered by your organisation (which may be claimed back in the case of public sector).

If applying for more than one stage of project development and design at the same time you can enter costs for each stage.

We will prioritise projects that demonstrate they will be delivered (i.e. installed and generating distributed low/zero carbon energy) by the 31st July 2023, in order to meet ERDF and GLA outputs and targets.

4: Scope and work to date

1. Previous work undertaken should include an overview of any previous studies or similar informing this application along with results and key conclusions of those studies (whether funded by DEEP/LEA or by other means).

2. Scope of work should include what the study will cover, i.e. a brief specification for the project in terms of what tasks you need the DE Framework service provider to do to support you, and final deliverables expected from them.
3. Organisational drivers may include declaration of a climate emergency, climate change and/or energy strategy; masterplan / local area energy plan outputs and recommendations; demands and needs from residents for environmental change/reducing energy costs. You need to answer the question 'what has prompted you to request funding for this work'?
4. We are asking the question about whether energy efficiency measures are being undertaken in parallel or after the project, since capital and operating costs of renewable energy technologies will be reduced if supplied buildings have a high level of energy efficiency and therefore a lower energy demand. This is good practice and reduces the total carbon emissions from energy use.
5. Questions 5-7 cover meeting the Mayor of London's drivers and should be self-explanatory.

5: Project Schedule

You will need to enter the dates you're planning to procure the service provider and when the LEA project will be completed. The chart on the right will autofill to provide visual representation of the project timeline. Also, you are encouraged to enter dates for the key project milestones during and after this project is completed.

6: State Aid

Self-explanatory section. If you are unclear of the State Aid rules, please refer to the links in Section 4.1 of this document.

7: Equality, Diversity and Inclusion

Self-explanatory section.

8: Declaration

Please read the statements, enter the information requested and insert your electronic signature.

4.3. Assessment criteria

Your application will be assessed against quantitative and qualitative criteria outlined below.

Quantitative criteria

We will use the following criteria for the application assessment process:

- Estimated annual and lifetime carbon dioxide savings (see methodology for estimating £/tCO₂e savings [here \(add hyperlink\) for details](#)).
- Renewable electricity installed (MW_e capacity installed).
- Renewable heat installed (MW_t capacity installed).
- Electricity and heat generated by low/zero carbon energy sources (MWh) in the project lifetime.
- Value for Money (VfM) of carbon savings (£ of LEA funding requested/estimated tCO₂e per year saved by the installed project).
- Lifetime CAPEX (£) of the constructed/installed project.
- Timeliness of project –i.e. projects installed and delivering clean, local energy by 31st July 2023 will be prioritised.
- Factor of funding leveraged for capital/other revenue costs – e.g. if LEA provides £100,000 to cover revenue costs, and capital costs are estimated at about £1,000,000, then the leverage factor is 10.

Qualitative criteria

We will use the following criteria for the application assessment process:

- What stage is the project in the overall lifecycle? e.g. feasibility/detailed design/commercialisation etc. – projects which are towards the later stages will get a higher score, since we will prioritise projects which can be operating by 31st July 2023.
- Are energy efficiency measures being (or are they expected to be) undertaken in parallel with this project? If so, will this be before or after the project construction/installation? - projects which are implementing or planning to implement energy efficiency measures will receive a higher score.
- Strategic importance of the project for London's good and fair growth, development and infrastructure needs – projects should have strategic value for a higher score.

- Support delivery of the Mayor's [Green Recovery Mission](#), Net Zero 2030 commitment, [London Environment Strategy \(2018\)](#), and intend to publish [London Plan](#) – projects should have a good policy conformity for a higher score.
- Commitment of the organisation to progress projects to implementation and operation including political sign-off – a significant and evidenced commitment at senior level will receive a higher score and this will be determined during the calls with senior project sponsors.
- Has the applicant received funding from DEEP/LEA previously and is the project viable/progressing well? – where projects have received funding before from DEEP/LEA and these projects are promising, and if no other funding is available to progress them to installation, they will score more highly.
- Is it within or close to an area of deprivation/fuel poverty? If so, will the project benefit that area? – for social and economic equality we will score more highly those projects in areas which will benefit and need the support most.
- Organisational experience and capacity to manage the project and then take the project through to implementation and operation? – although we will provide some support in the form of a Programme Delivery Unit the funding recipient should be able to spend sufficient time, e.g. on procurement (all evidence is required for ERDF), to progress the project.
- What is the Equality, Diversity and Inclusion (EDI) policy and actions of the organisation applying for funding like? – we will score applications more highly if EDI values and actions are embedded in the organisation and project itself.
- How the project supports local green jobs and skills including apprentices and roles for young people.

4.4. Assessment process

Once you have submitted your application, it will be assessed according to the following two-stage decision-making process:

1. **Assessing application forms:** all applications are scored by a minimum of two assessors from the Greater London Authority, according to the criteria outlined above.
2. **Funding panel interview call:** those applications which have met the criteria and achieved the minimum threshold in the first stage will then be asked to participate in a 15-20 min call (by MS Teams video link or similar) between the GLA funding panel and the applicant (including senior project sponsors) before a final funding

decision is made. The funding panel will include officers from the Greater London Authority.

We expect final funding decision on all applications to be made within 2-4 weeks of the application form being submitted. During the assessment process, we may contact you to clarify points in your application, or to ask for more information.

The funding panel will prioritise those applications that most closely meet the assessment criteria and will also consider the location and type of projects to support a balanced programme across Greater London.

Any offer(s) of funding will be made subject to you accepting a funding recipient agreement which must be signed before procurement can start. A tri-party agreement will also be signed between yourselves, the selected DE Framework Service Provider and the GLA before work can begin on the project.

4.5. Delivering projects safely during the COVID-19 pandemic

It is likely that social distancing and other public health measures introduced to combat the spread of COVID-19 will continue for some time. It is imperative that all projects always follow the latest public health guidance. The latest COVID-19 updates and guidance can be found at www.london.gov.uk/coronavirus.

We are hoping that most of the work on LEA funded projects can be done remotely by the service providers on the Framework. However, if there are investigative studies and other in the field work to be done, they should be done outside as far as possible. See the government guidance for [construction and other outdoor work](#).

Impact of COVID-19 on project delivery

We recognise that the COVID-19 pandemic is an exceptional event, the effects of which are ongoing. It is possible that changes to public health guidance on social distancing, or a return to a lockdown situation, may have an impact on the delivery of projects, or more widely on the organisational capacity of grant recipients. We have endorsed the [London Funders statement](#) pledging support to civil society groups affected by COVID-19. This commits to four main ways of working to manage the impacts of the pandemic on grant-funded activities:

1. adapting activities – acknowledging that agreed outcomes may not be achieved in the timeframes originally set.
2. discussing dates – not adding pressure on organisations to meet tight reporting deadlines.
3. financial flexibility – allowing organisations to use money differently e.g. buying equipment and covering staff sickness.
4. listening – encouraging frank conversations between funders and grantees, with funders being supportive of their needs.

4.6. Data protection, freedom of information and transparency

You must ensure you meet the requirements of the Data Protection Act 1998 and our data protection policy, available at www.london.gov.uk.

As a public authority, we are subject to the Freedom of Information Act 2000. That means unless a relevant exemption applies, we will release any information we hold about this programme to those requesting it.

We are committed to [openness and transparency](#) openness and transparency at City Hall. That means we will publish a range of information held by us relating to this programme. This includes grant agreements, targets, performance and spending information and other data. Successful bidders should meet this commitment too, by making available information to us so we can publish it and respond to specific requests.

Other formats and languages

For a large print, Braille, disc, sign language video or audio-tape version of this document, please contact us at the address below:

Greater London Authority
City Hall
The Queen's Walk
More London
London SE1 2AA

Telephone **020 7983 4000**

www.london.gov.uk

You will need to supply your name, your postal address and state the format and title of the publication you require.

If you would like a summary of this document in your language, please phone the number or contact us at the address above.