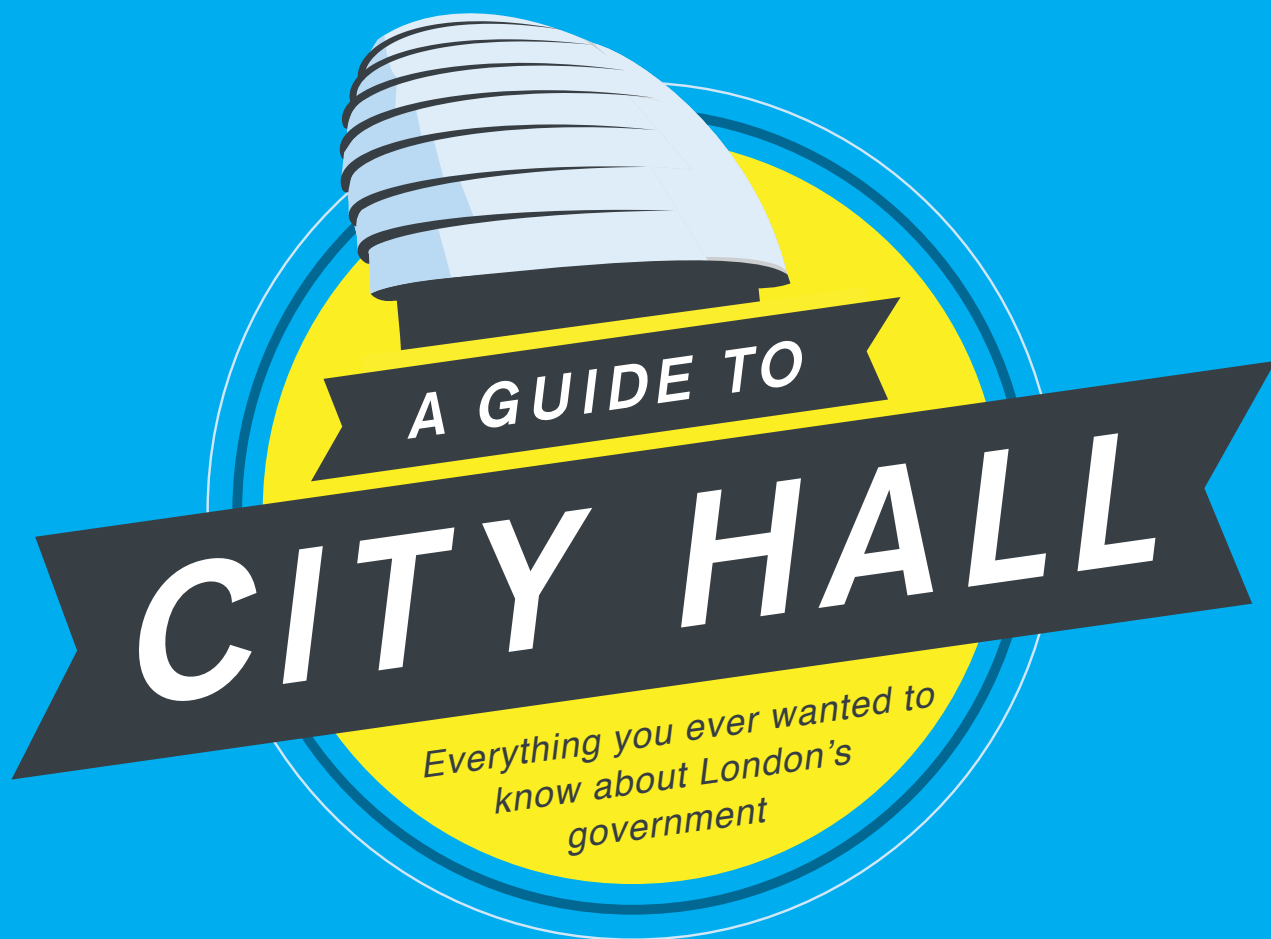
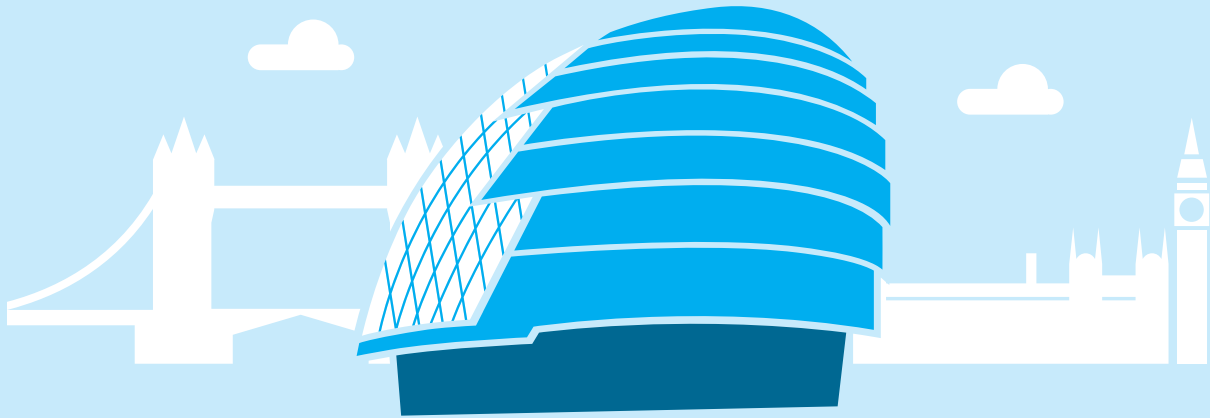


MAYOR OF LONDON



LONDONASSEMBLY



WHAT IS CITY HALL?

City Hall has one Mayor and 25 Assembly Members who are elected by Londoners and, with the support of its staff, work to make London the best big city in the world.

Also known as the Greater London Authority (GLA), it was created after a referendum in 1998 when Londoners voted in favour of a directly elected Mayor to represent the capital's interests, and a London Assembly to scrutinise his work.

Just like the city itself, it's a unique form of local government – unlike anywhere else in Britain.

THE MAYOR OF LONDON

The Mayor is responsible for making London a better place for everyone who visits, lives or works in the city. He provides citywide leadership, setting an overall vision for London and creating plans and policies to achieve it.

The Mayor is elected every four years.

The current Mayor is Boris Johnson, first elected in 2008, re-elected in 2012.

THE LONDON ASSEMBLY

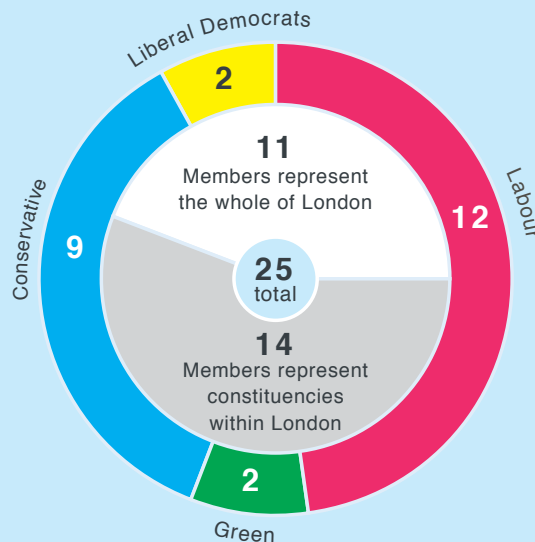
The London Assembly is a watchdog for London and holds the Mayor and his advisers to public account. The Mayor must consult the Assembly before producing his statutory strategies and budget, including City Hall's share of council tax.

Assembly Members are elected every four years by Londoners to represent their interests on vital issues like the economy, transport, housing and crime.

The most public way of holding the Mayor to account is at Mayor's

Question Time. The Assembly also conducts investigations through its committees, which meet regularly and publish their findings. They provide recommendations, making proposals to the Mayor and government organisations about ways to improve the capital.

The London Assembly also funds and appoints the board of London TravelWatch, the independent consumer watchdog for transport users.

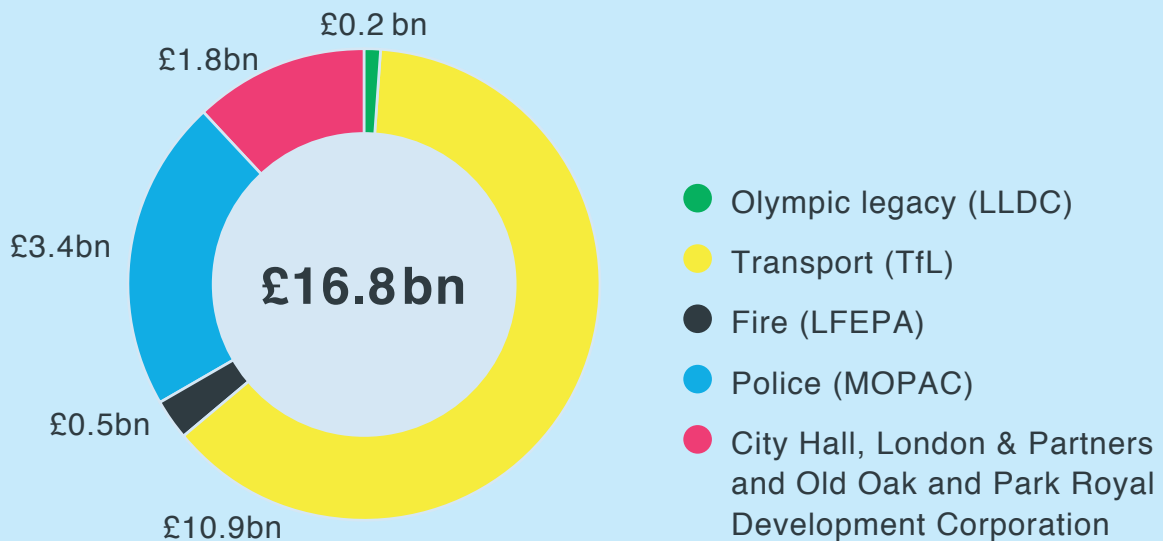


THE MAYOR'S BUDGET

The Mayor's £17bn annual budget supports investment in public transport, fire services and policing as well as the work of City Hall.

It is financed from a mixture of central government grants, transport fares and other charges, business rates and council tax.

WHO SPENDS WHAT?



WHO WE WORK WITH

At City Hall we work closely with other organisations in London government, which together make up the GLA group:



Transport for London

Responsible for London's transport



London Fire and Emergency Planning Authority

Runs the London Fire Brigade



London Legacy Development Corporation

Responsible for managing Queen Elizabeth Olympic Park



London & Partners

The official promotional company for London



Mayor's Office for Policing and Crime

Delivers the Mayor's Police and Crime Plan and oversees the Metropolitan Police Service



Old Oak and Park Royal Development Corporation

Helps plan the regeneration of this west London area

We also work with local councils, central government, business and community groups, as well as:

the **London Enterprise Panel** which works with business on regeneration, employment and skills. It is chaired by the Mayor.

the **London Pensions Fund Authority**, one of the UK's largest pension funds. It runs the local government pension scheme for many local government workers in London and around the UK.

HOW YOU CAN CONTRIBUTE



Have your say on policies with our public consultations



Join the Mayor and the London Assembly at an event or meeting



Share your views on Talk London, our online community



Talk to us on Twitter @LDN_gov, or Facebook /LDNgov



Cast your votes in the next London election in May 2016

Find out more at

london.gov.uk/get-involved

CONTACT US

City Hall

The Queen's Walk, More London, SE1 2AA
020 7983 4000

The Mayor

@MayorofLondon
mayor@london.gov.uk
020 7983 4100

The London Assembly

@LondonAssembly
londonassemblynews@london.gov.uk
020 7983 4100

LOCAL COUNCILS

London's councils lead at a local level on:

- COUNCIL HOUSING
- RUBBISH COLLECTION
- PARKING
- SCHOOLS
- COUNCIL TAX COLLECTION
- LEISURE
- SOCIAL CARE & PUBLIC HEALTH

HOW LONDON GOVERNMENT IS RUN

CITY HALL

We have a role in many aspects of London life. In fact, you probably see it every day. Some of our most important work is shown below.

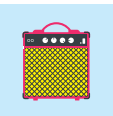
CENTRAL GOVERNMENT

Central government leads at a national level on:

- HEALTH CARE
- FOREIGN POLICY
- DEFENCE
- WELFARE
- MOST FORMS OF TAXATION



ARTS & CULTURE



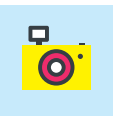
Gigs

Showcasing the best of London's young musical talent since 2009



London events

Organising the New Year's Eve Fireworks, St Patrick's Day and more



Cultural capital

Attracting tourists to London. It's why eight out of ten visit the city

BUSINESS & ECONOMY



London Living Wage

Getting more employers committed to paying £9.15 per hour



Tech firms

Helping London grow from just under 27,000 tech firms in 2008 to over 34,000 today



Boosting business

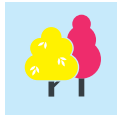
Helping local businesses work together across 40 Business Improvement Districts

ENVIRONMENT



Cutting carbon

Helping London reduce carbon emissions by 60 per cent by 2025



Greening London

Creating and improving 100 pocket parks across the capital by 2015



Reducing waste

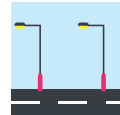
Helping reduce, recycle and reuse the 365kg of waste each Londoner makes yearly

TRANSPORT



Green transport

Rolling out 1,700 green hybrid buses as well as zero emission taxis by 2016



Road network

Investing £4bn to improve London's roads over the next 10 years



Tubes on track

There'll be 191 new air-conditioned trains by 2016

FIRE



Rapid response

Aiming to get the first fire engine to an incident in an average of six minutes



Fire safety

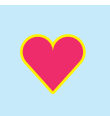
Carrying out over 200,000 home fire safety visits by 2016



Enforcing fire regulations

Prosecuting people who endanger others

HEALTH & SPORT



Healthy workplaces

Supporting the London Healthy Workplace Charter which has reached 120,000 employees



Grassroots sports

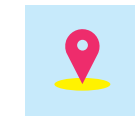
Improving 105 sporting facilities, so another 85,000 people can use them weekly



World sport capital

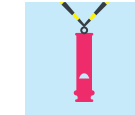
Securing major sporting events like the 2015 Rugby World Cup and the 2017 World Athletics Championships

VOLUNTEERING



Team London

Helping 100,000 Londoners volunteer across the city by 2016



Sporting volunteers

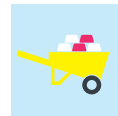
Helping volunteers pledge 200,000 hours to community sport



London Ambassadors

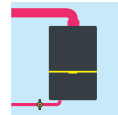
Welcoming visitors to London every summer since 2012

HOUSING & LAND



Affordable homes

Funding 100,000 homes by 2016



London Rental Standard

Aiming to increase the number of accredited landlords to 100,000 by 2016



First Steps scheme

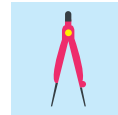
Giving 50,000 Londoners the chance to own their homes

PLANNING



The London Plan

Planning for growth, increasing borough housing targets by a third



Guiding development

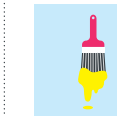
Working with boroughs to plan for housing and jobs in London's 38 opportunity areas



Planning decisions

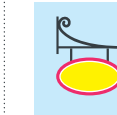
Advising the Mayor on London's 300 biggest planning applications each year

REGENERATION



Regeneration Fund

Boosting local economies and bringing jobs to areas affected by the 2011 riots



Outer London Fund

Improving 70 high streets across 23 boroughs



Olympic legacy

Opening Queen Elizabeth Olympic Park, creating jobs and revitalising east London

POLICING & CRIME



A safer London

Cutting key neighbourhood crimes by 19 per cent since 2012 – meaning 120 fewer victims a day last year



More bobbies on the beat

Redeploying 2,600 police officers into local neighbourhood teams



Building trust

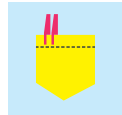
Increasing confidence in local police – 67 per cent of Londoners think they're doing a good or excellent job

YOUNG PEOPLE



Healthy schools

Promoting healthier lifestyles to over a third of London's schools



Young Ambassadors

Offering every state school student a chance to volunteer by 2017



Schools Excellence Fund

Getting extra government and EU funds to support teaching in London schools