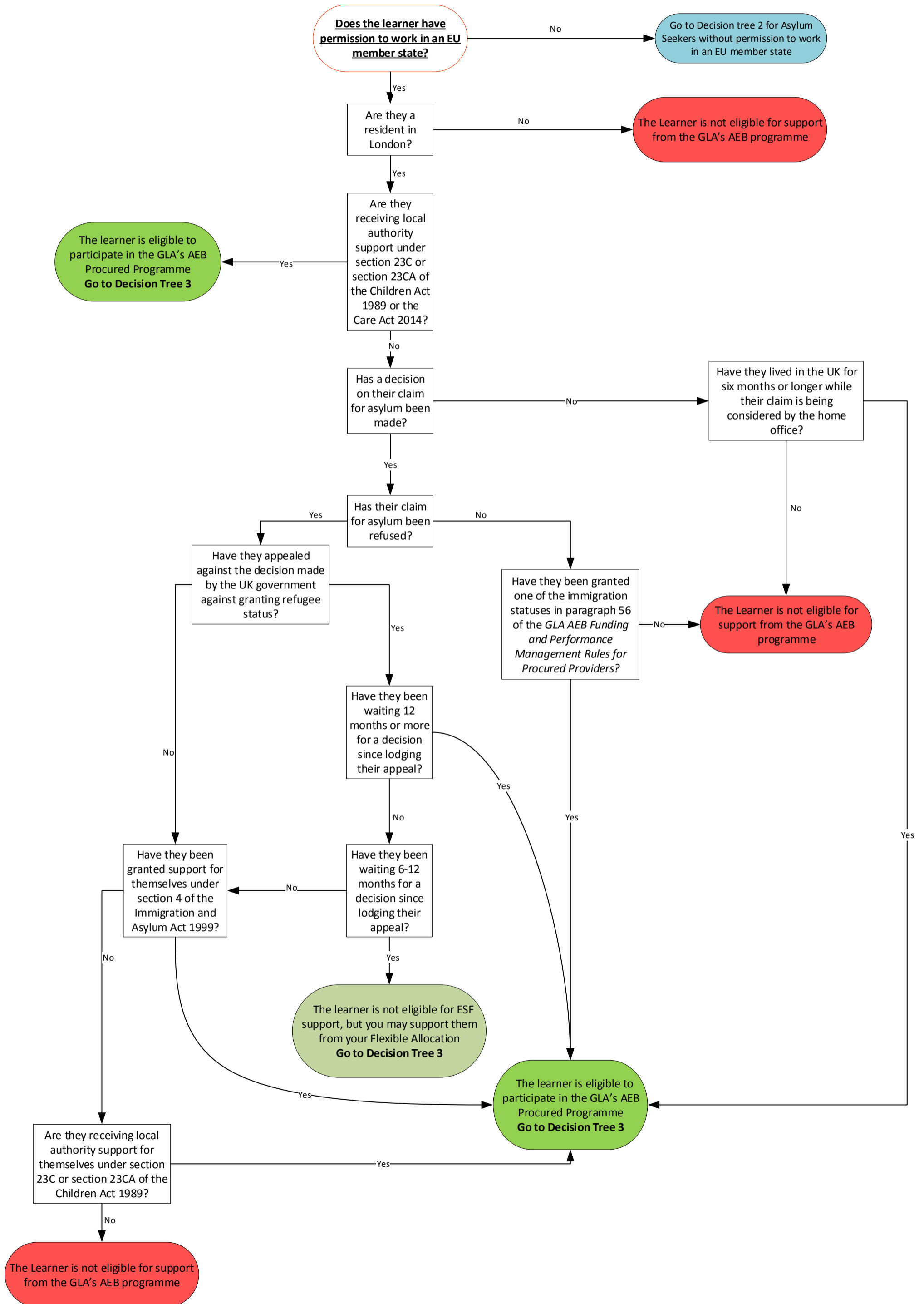
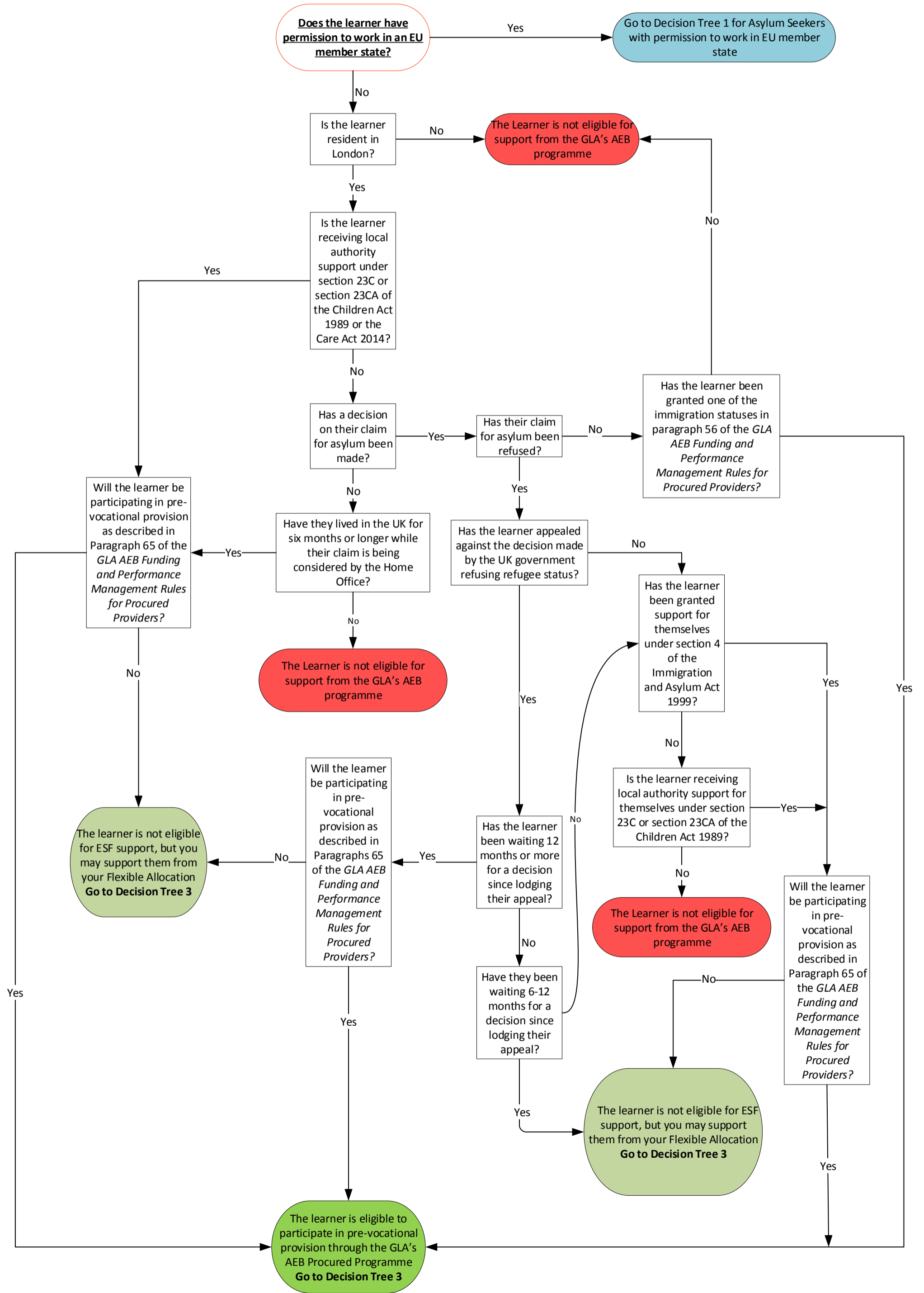




**Decision Tree 1: Determining the Eligibility of Asylum Seekers for AEB support: Asylum seekers with permission to work in an EU member state**

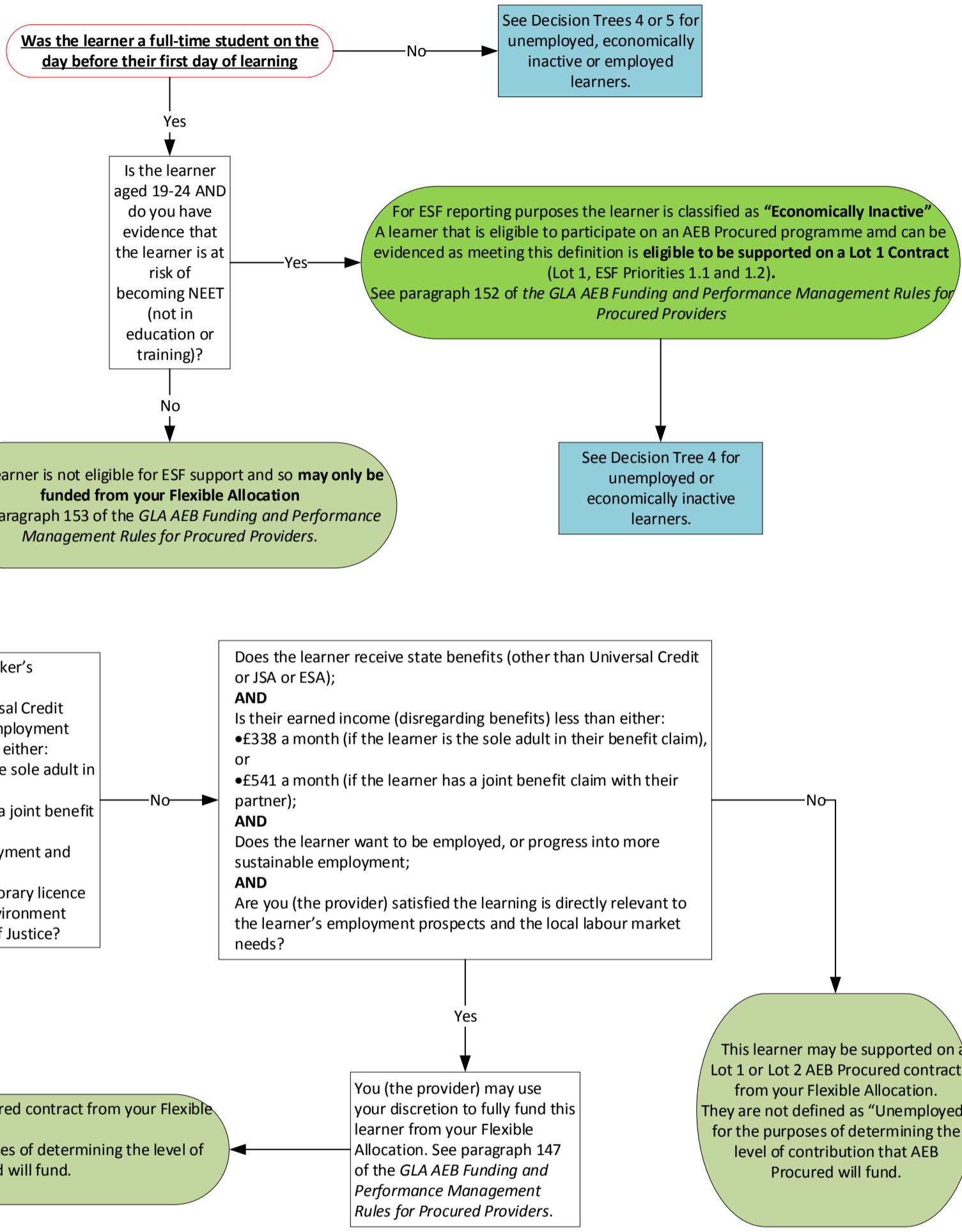


Decision Tree 2: Determining the Eligibility of Asylum Seekers for AEB support: Asylum seekers without permission to work in an EU member State



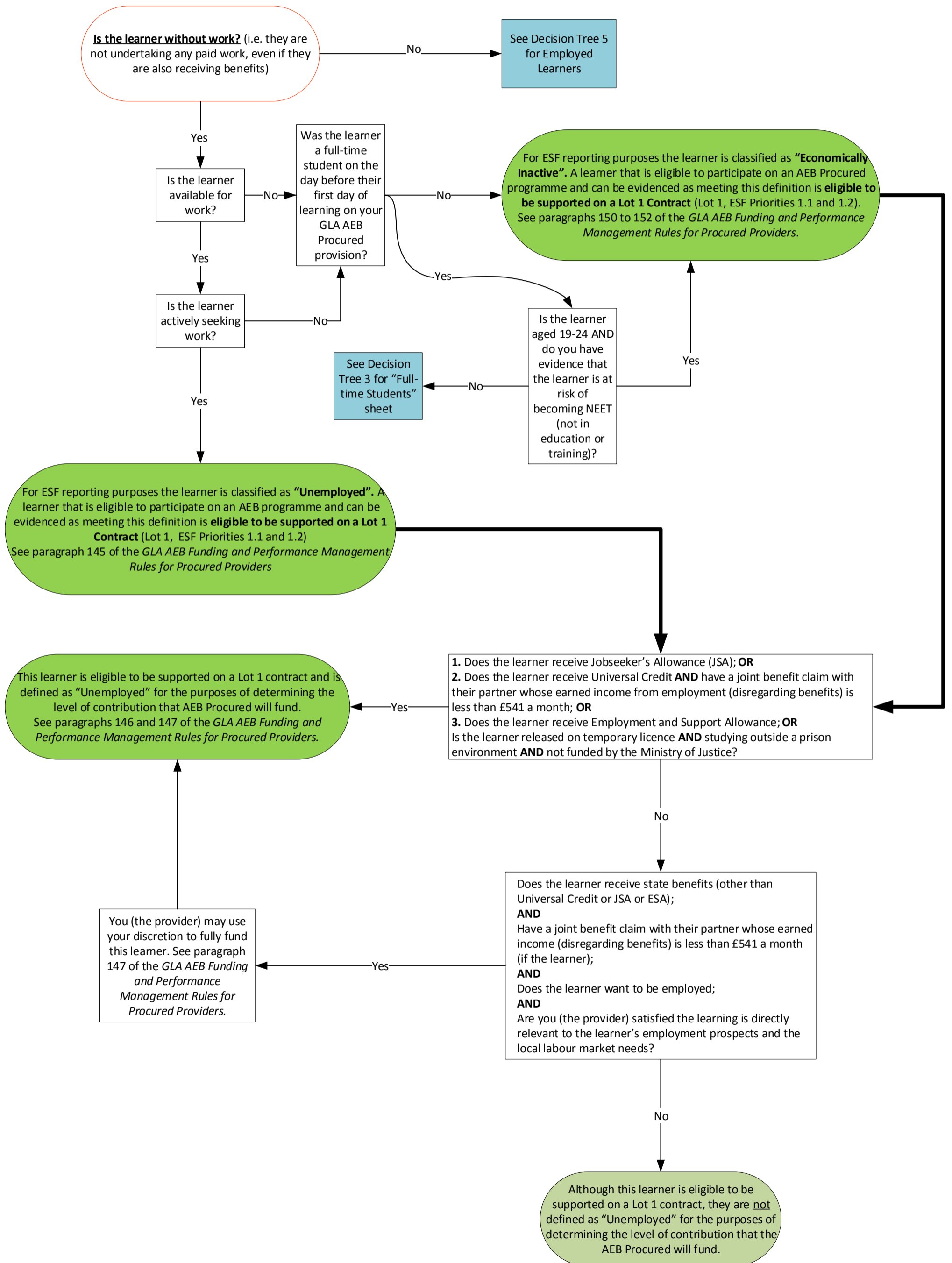


**Decision Tree 3: Learners who are “full-time students” on the day before their first day of learning**



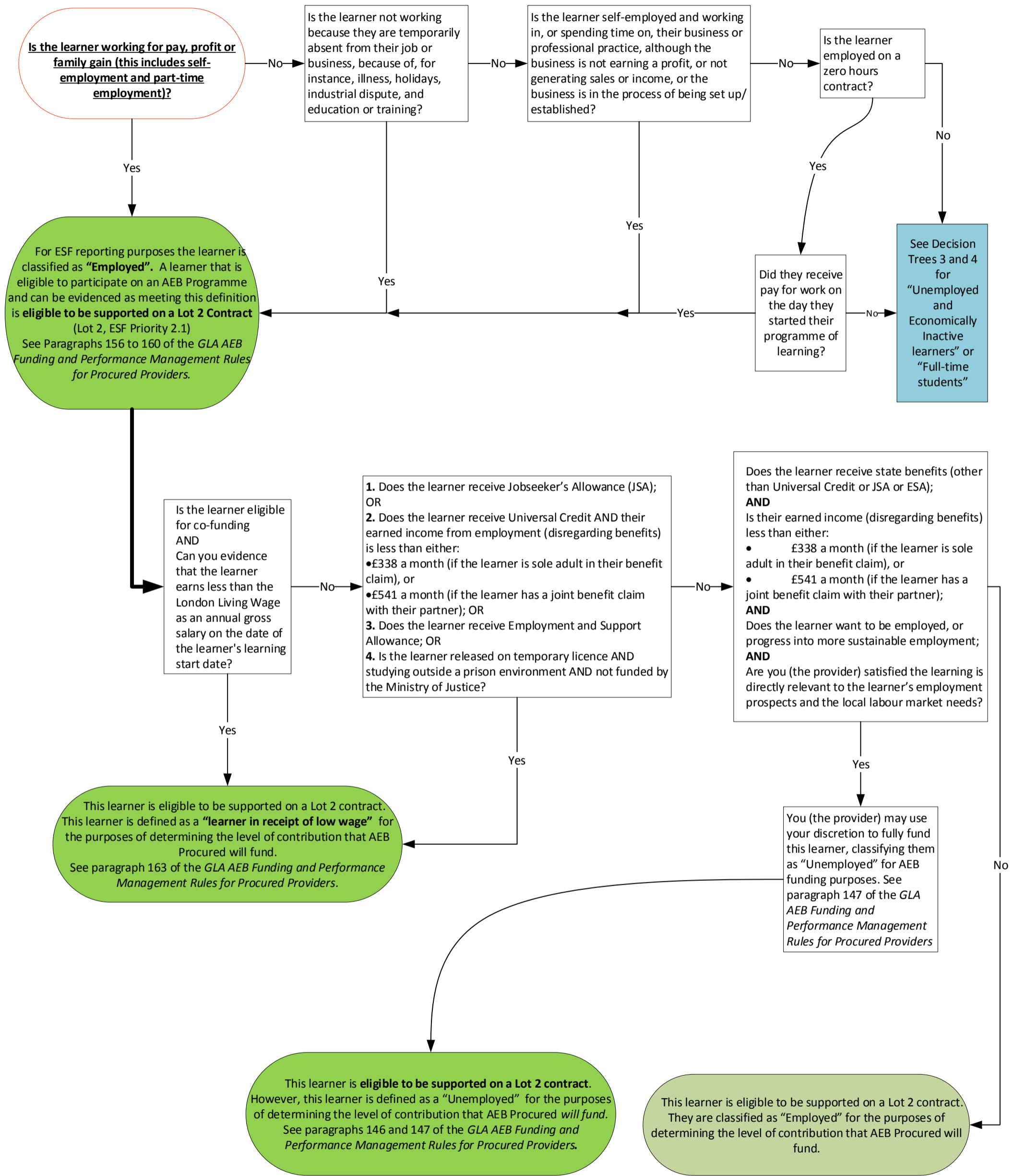


**Decision Tree 4: Learners defined as “Unemployed” or “Economically Inactive” for ESF eligibility and AEB funding purposes**



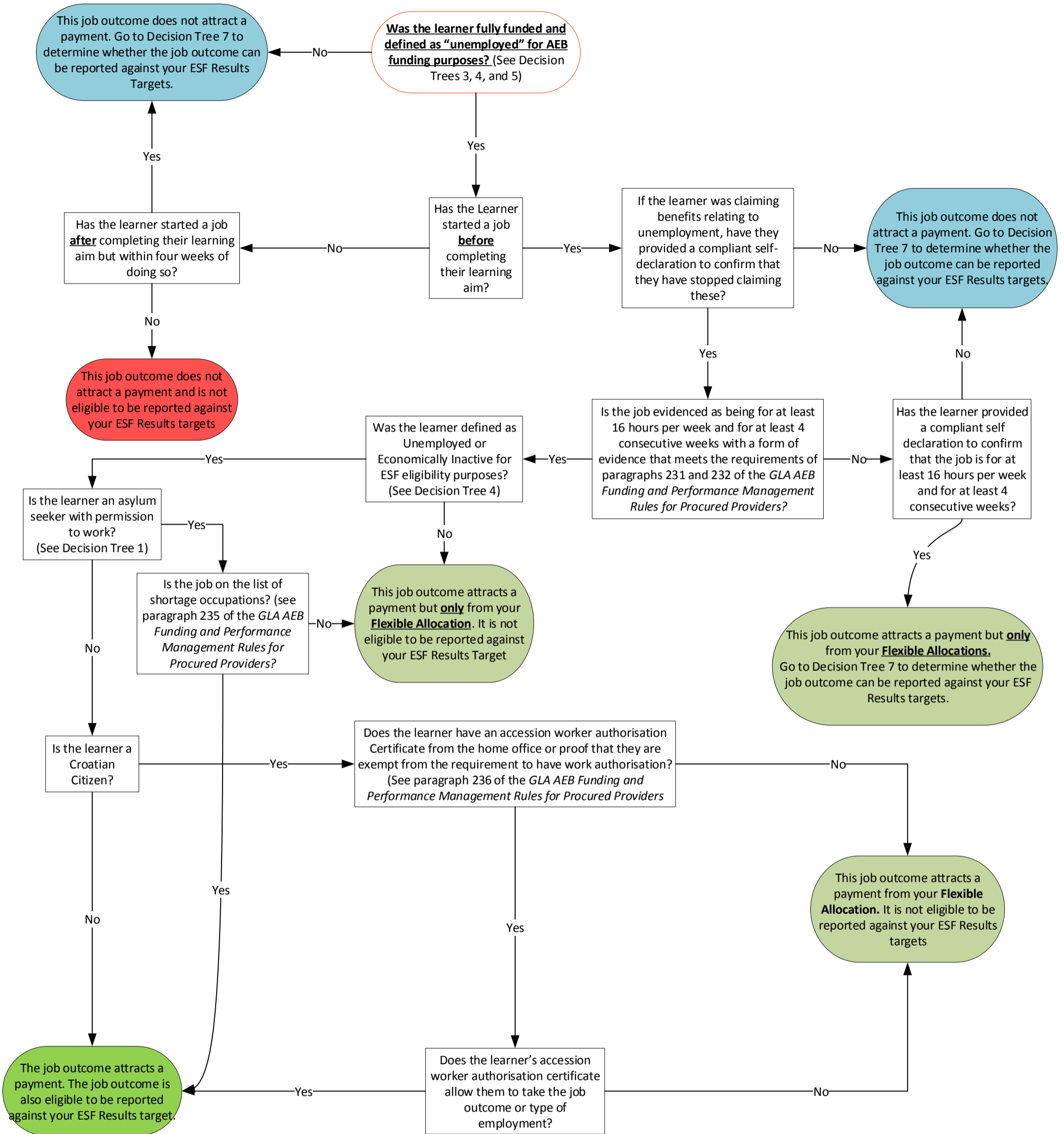


**Decision Tree 5: Learners defined as "Employed" for ESF eligibility and AEB funding purposes**





**Decision Tree 6: Job Outcomes attracting Payments (Lot 1 or Lot 2)**





**Decision Tree 7: Job outcomes that can be reported against ESF Results Targets (Lot 1 Only)**

