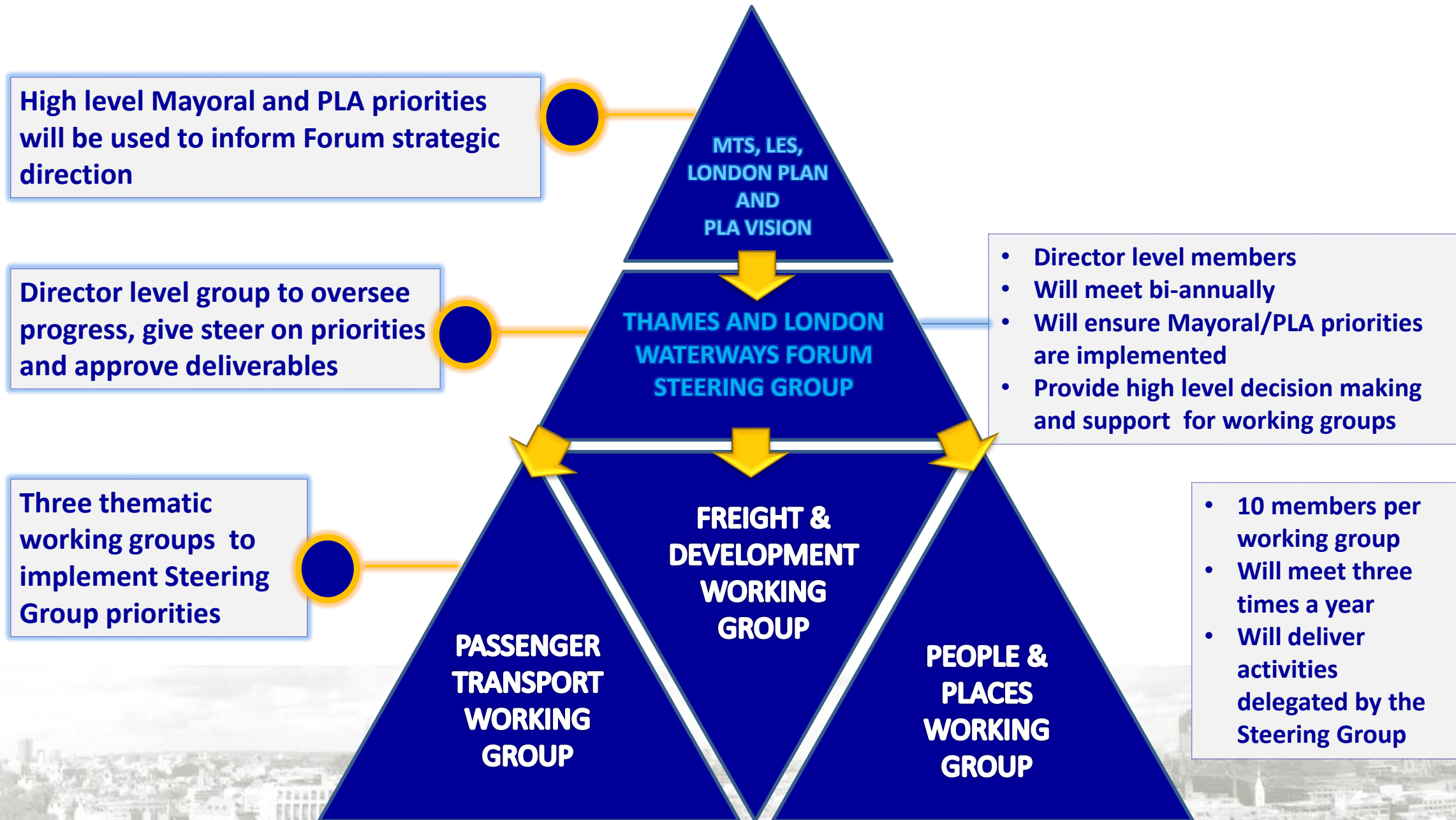


# **FREIGHT AND DEVELOPMENT WORKING GROUP**

**5 December 2017**



# AN OVERVIEW OF THE THAMES AND LONDON WATERWAYS FORUM

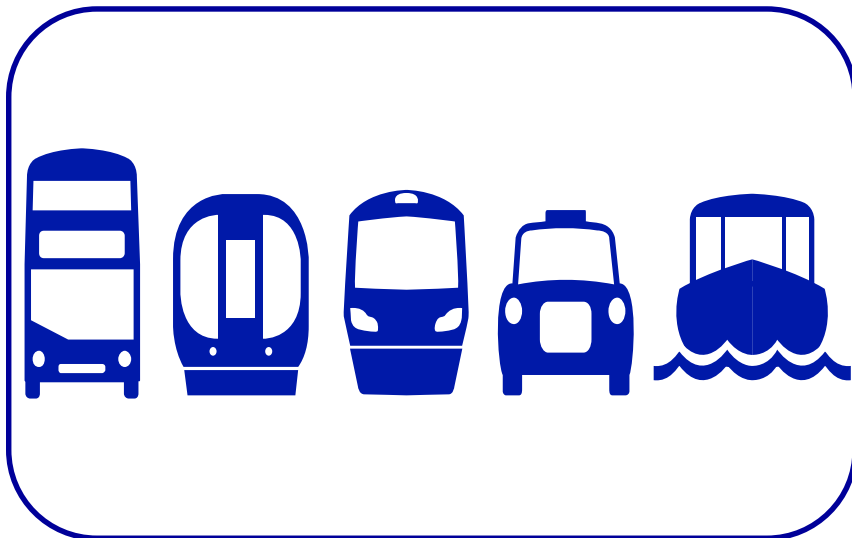


# Mayor's draft Transport Strategy (MTS)

**Delivers a good public transport experience**

**Healthy Streets and healthy people**

**Supports the economy, new homes and jobs**



# MTS and river Thames and London's waterways

Realise the full potential of the river and London's waterways to carry passengers and goods

Improve the accessibility of river piers and services

Moving freight off London's roads

Pier Strategy to promote new piers and additional capacity at strategic piers



# Draft London Environment Strategy (LES)



1. Green infrastructure and biodiversity



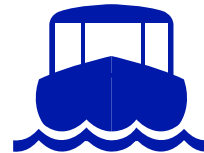
2. Air quality



3. Climate change mitigation and energy



4. Waste management



5. Climate change adaptation and water



6. Noise

# LES and river Thames and London's waterways

Making London greener

Making London cleaner

Ready for the future



Improve the state of London's waterways

An air quality strategy for the Thames

Zero emission London 2050

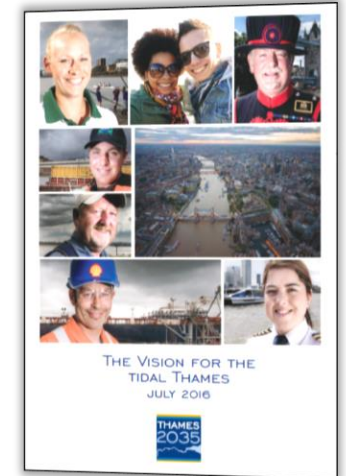
Increase the movement of waste by water

Reduce emissions from river and canal vessels

# PLA VISION FOR THE THAMES 2035



**20 year vision  
with 6 key goals:**



- **Port of London: more trade, more jobs**
- **Inland Freight: more goods off roads onto the river**
- **Passenger Transport: more journeys**
- **Sport and Recreation: more participants**
- **Environment and Heritage: improved tidal Thames environment**
- **Community and Culture: more people enjoying the Thames and its banks**

## LINK TO THE LONDON ENVIRONMENT STRATEGY:

- Reduce freight movements by road, more use of cargo bikes for last mile deliveries
- Increase levels of London's waste transported by river: cut road emissions and congestion

- PLA Target: Double river patronage to 20m p.a. by 2035
- Supports Mayoral target of 80% of all journeys being made by PT, cycling or walking by 2041

## LINK TO MAYORAL HEALTHY STREETS OBJECTIVES

## LINK TO THE LONDON ENVIRONMENT STRATEGY:

- Reduce freight movements by road, more use of cargo bikes for last mile deliveries
- Reduce emission levels on the Thames, tributaries and canals

LINK TO TFL PIER STRATEGY  
LINK TO LONDON & PARTNERS TOURIST

# The New London Plan



... and London's waterways

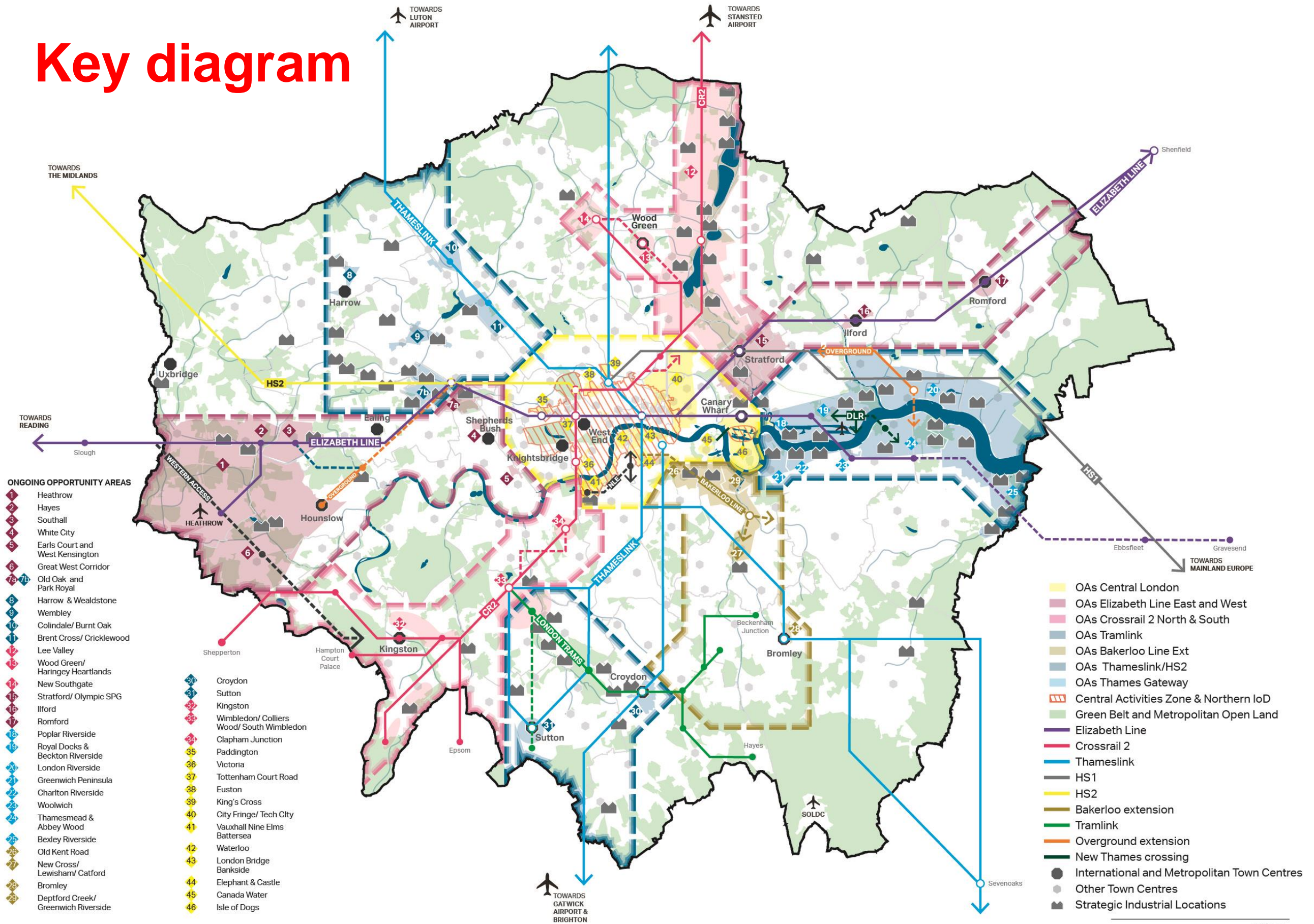


# At the centre of the New London Plan: Good Growth policies

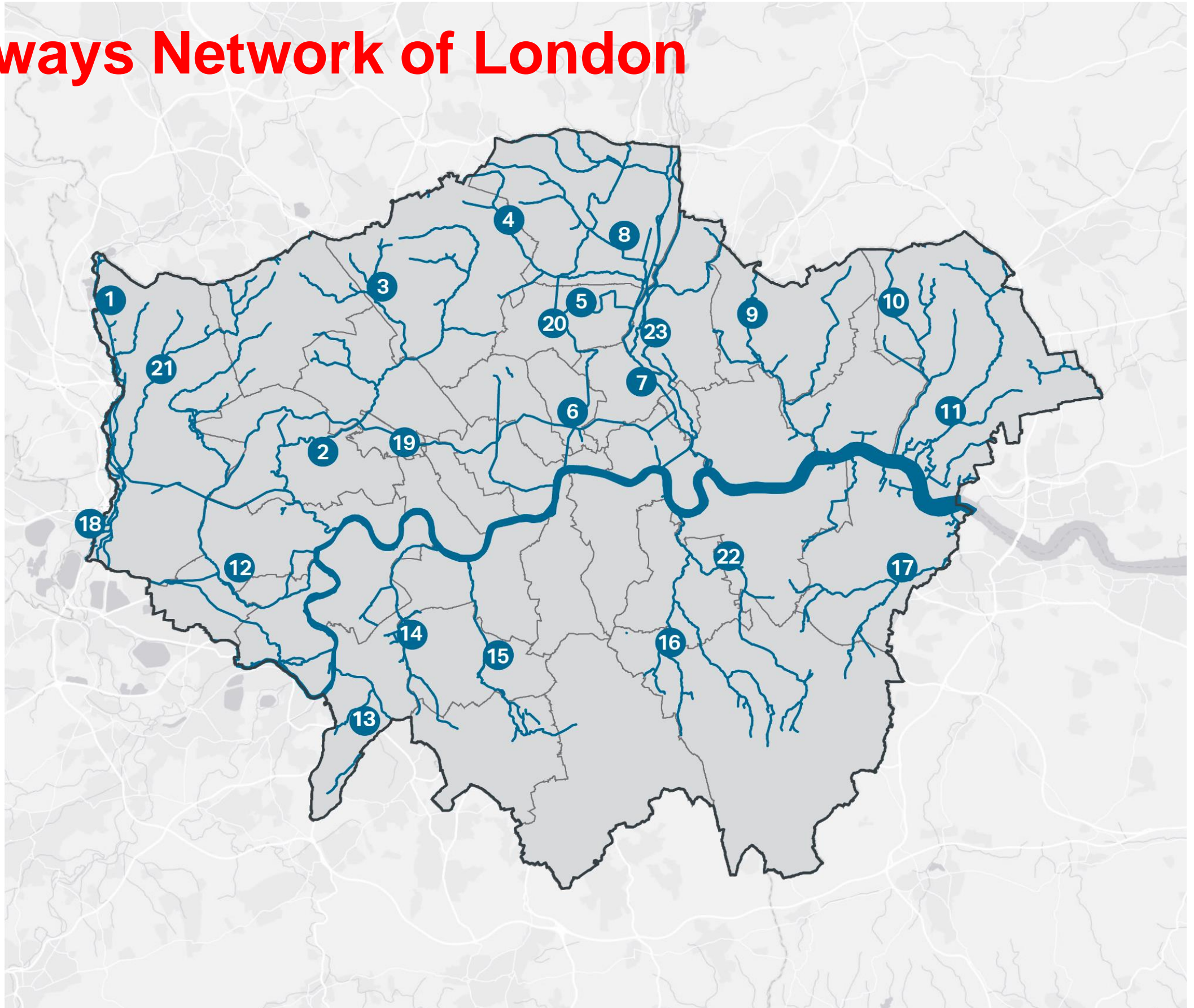
1. Building strong and inclusive communities
2. Making the best use of land
3. Creating a healthy city
4. Delivering the homes Londoners need
5. Growing a good economy
6. Increasing efficiency and resilience



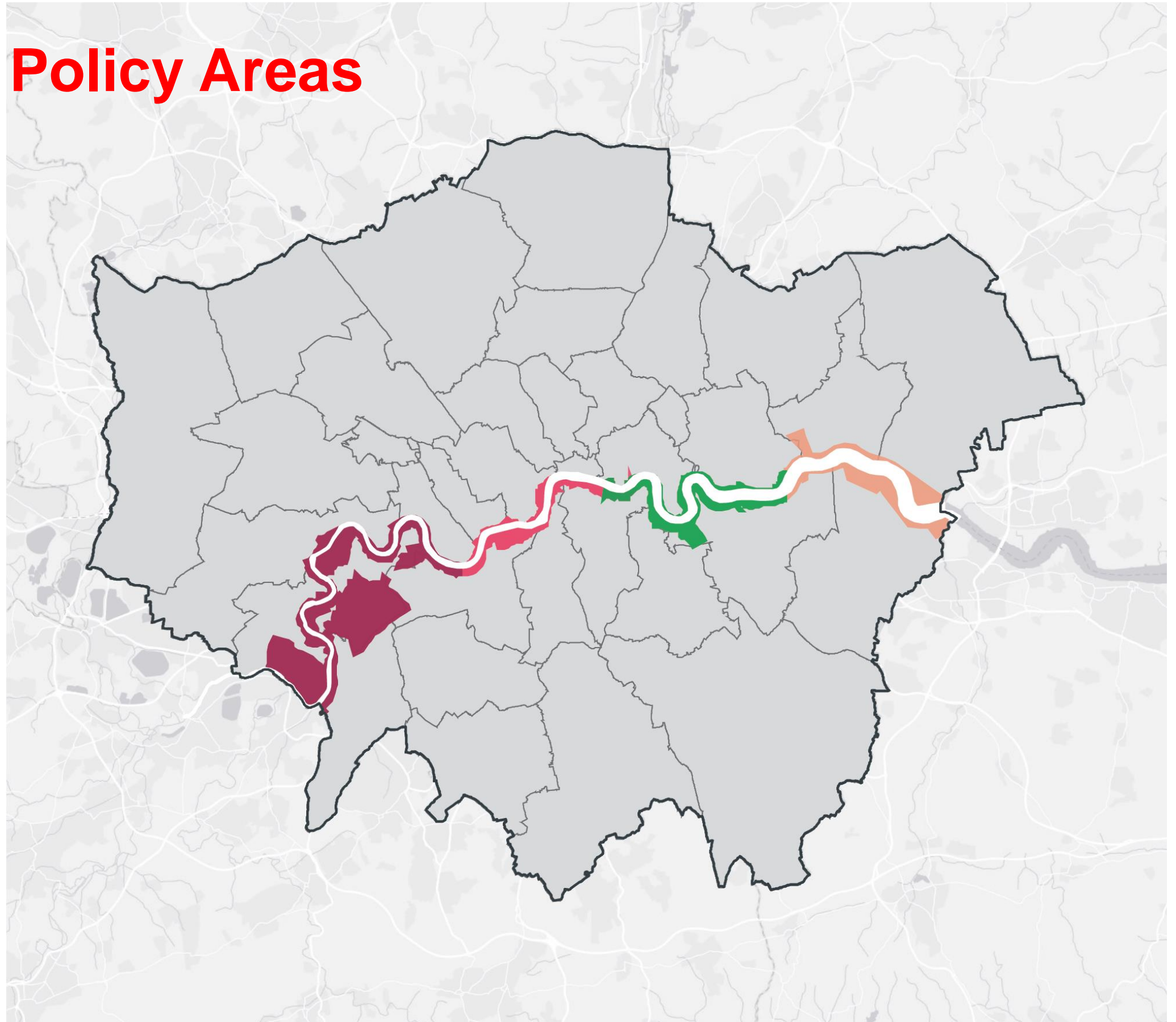
# Key diagram



# Waterways Network of London



# Thames Policy Areas



# Waterways Policies

## SI 14 Waterways – Strategic Role

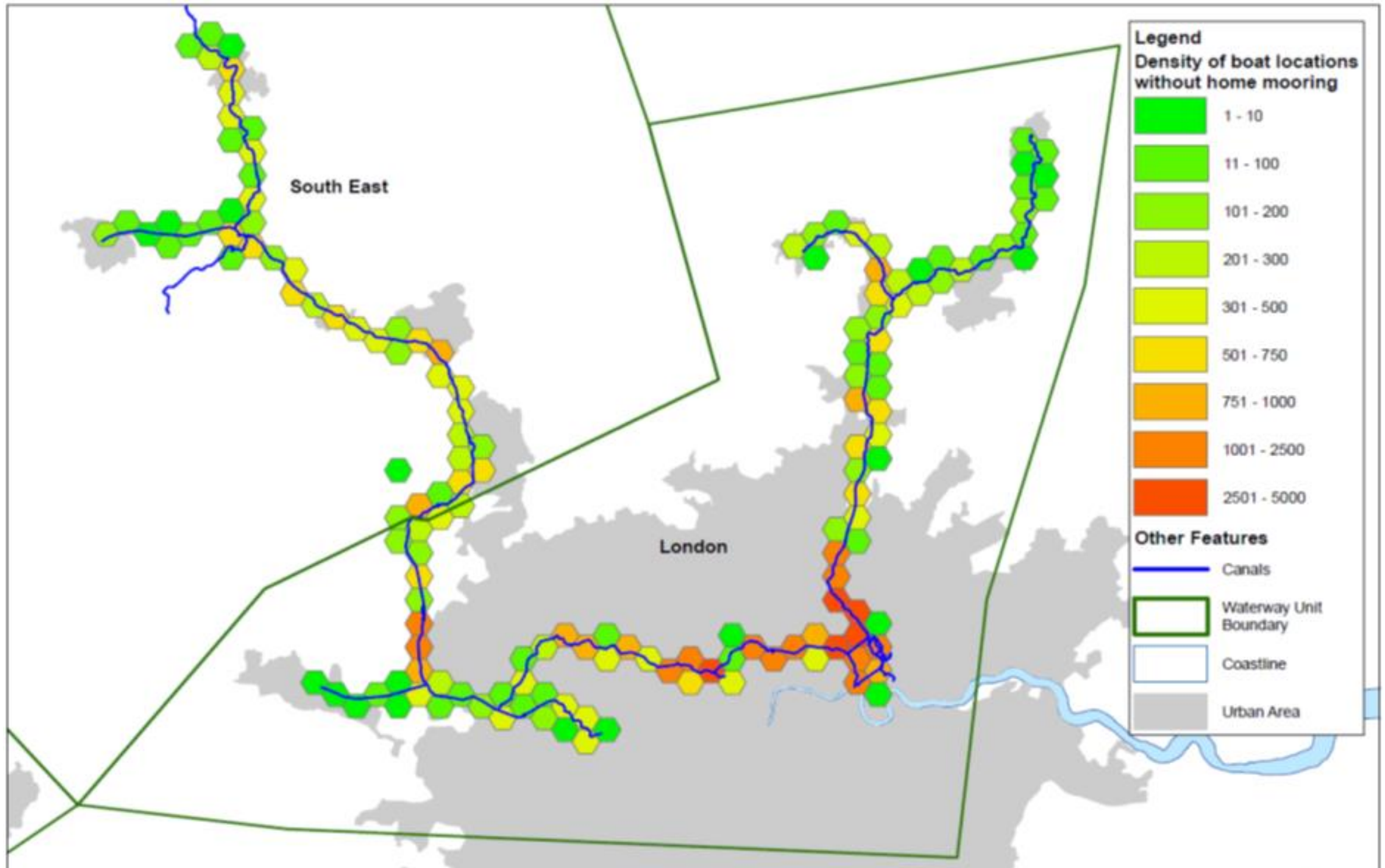
- Promote waterways as multi-functional assets
- Take account of marine spatial planning
- Maintain Thames Policy Areas and Thames Strategies

## SI 15 Water Transport

- Increase passenger transport pier capacity
- Support additional strategic boatyard
- Facilitate increase in water freight
- Review Safeguarded Wharves
- Minimise potential conflict



# Canals – Density of Boat Locations



# Waterways Policies

## SI 16 Waterways – Use and Enjoyment

- Increase provision of water sport centres
- Support cultural, educational and community facilities/events
- Support new mooring facilities
- Help improve/extend Thames Paths and towpaths

## SI 17 Protecting London's Waterways

- Facilitate river restoration
- Support distinct open character
- Support appropriate development into the waterways



# The New London Plan Process

**Timetable** 1st December 2017 - 2 March 2018

Draft London Plan consultation

- Autumn 2018: examination in public (EiP)
- Autumn 2019: publication (adoption)

**Consultation** Info [londonplan@london.gov.uk](mailto:londonplan@london.gov.uk)

- [www.london.gov.uk/new-london-plan](http://www.london.gov.uk/new-london-plan)

**Waterways** Info [jorn.peters@london.gov.uk](mailto:jorn.peters@london.gov.uk)



# Thames and London Waterways Forum Launch Event

## Feedback



# Questions?

## Freight and Development

I would like to see more focus on canals and canalside development in view of Opportunity Areas in west London

What about training and skills? How does that fit in?

Need to consider the reasons why people are choosing to live on waterways and the impact of it

What can the PLA / GLA do to promote more combined wharf and residential developments as advocated by Cory's Nick Pollard?

What provisions are there for more riverside delivery? Docking, dropping off?

How do we focus on place making?

Future opportunities: How to use autonomous technology? Wharf ways – shaping new development... More piers (Central London)

There are too few skilled fitters, electricians, steelworkers and no where to maintain craft on the Thames – this is essential for freight vessels

Future opportunities: Many safeguarded wharves cannot be used to their full potential. What can be done to facilitate greater land access? Additionally, how can we ensure the safeguarding of wharves?

New residential craft are arriving on the canal network daily – the system is not coping

How can the waterways help to shape new development?

When people want to develop freight transport on the Thames why do they ask consultants and never the people who do it?

We are very happy to bring our Central London freight and air quality experience to the group (Cross River Partnership)

How can we plan for freight hubs – e.g.. large ship in middle sends smaller vessels to wharves for onward delivery? What provisions are there to permit greater riverside freight delivery (e.g. new docking / drop-off spaces?)

Without adequate access to the river it will be impossible to develop river freight

How can strategic planning ensure that conflict between residential development and existing riverside development is minimised?

How can we plan for freight hubs e.g. larger ships which send smaller vessels for onward delivery or to wharves?

With Thames Tideway developments can we have more permanent piers in London to increase river transport – i.e. work across sectors?

There are too few skilled fitters, electricians, steelworkers and no where to maintain craft on the Thames – this is essential for freight vessels

How can we encourage freight into London without wharves? Without adequate access to the river it will be impossible to develop river freight. Developing freight with the businesses / experts - need for London wharves – how? How to work with the PLA / GLA for combined wharves?

Thames and London Waterways Forum

# INITIAL PRIORITIES

## Freight focus

- Safeguarded Wharves Review
- reactivation of vacant safeguarded wharves
- urban logistics and freight delivery hubs
- common user berths
- air quality issues arising from water freight operations

## Development focus

- Draft London Plan consultation
- industrial/commercial, infrastructure and housing development appropriate in the context of water space incl. place making in Opportunity Areas
- addressing demand for moorings and associated services
- addressing demand for additional strategic boatyard facility