

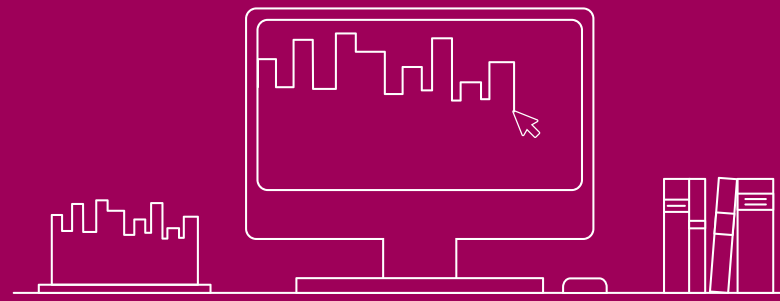
Design



Strategic Policy 9 Built Environment

Sets out policy to optimise development in a sustainable manner by:

- delivering the highest design quality and architecture
- delivering high densities and a range of building heights including tall buildings at locations of high public transport accessibility and locations in the places chapter
- responding to sensitive locations such as existing residential neighbourhoods, open spaces and heritage assets



Development Management Design Policies

Sets out different policies as follows:

- **D1** - secure a high quality and comprehensive design process
- **D2** - deliver high quality, inclusive, accessible and coordinated multifunctional public realm and manage advertisements
- **D3** - deliver accessible and inclusive design
- **D4** - deliver well-designed buildings including local character, townscape, materials, design of internal spaces, safety, roof spaces and shopfronts
- **D5** - deliver the highest standards of design for tall buildings in relation to the skyline, surrounding public realm, silhouettes, delivering significant benefits to the surrounding areas and communities and supporting local amenity
- **D6** - deliver an appropriate level of amenity in relation to light, privacy, private open space, overheating and wind
- **D7** - manage impacts on key views from within and around the OPDC area
- **D8** - conserve and enhance the historic environment including canal, rail, industrial residential and open space heritage
- **D9** - maximising opportunities for play through high quality informal and dedicated play space

Policy SP9: map of sensitive locations

