

MAYOR OF LONDON

LONDONASSEMBLY

# A New Deal for Young People

Support with providing mentoring



Easy  
Read

# Easy Read



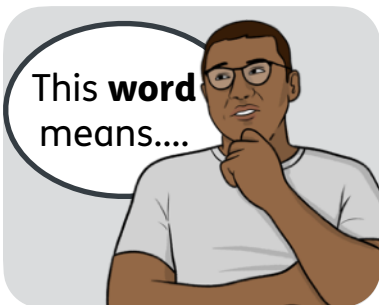
This is an Easy Read version of some information. It may not include all of the information but it will tell you about the important parts.



This Easy Read booklet uses easier words and pictures. You may still want help to read it.



Some words are in **bold** - this means the writing is thicker and darker. These are important words in the booklet.



Sometimes if a bold word is hard to understand, we will explain what it means.



[Blue and underlined](#) words show links to websites and email addresses. You can click on these links on a computer, tablet or smartphone.

# What is in this booklet

About this booklet .....4

Our Mentoring Quality Framework .....6

Support for mentoring providers.....8

# About this booklet



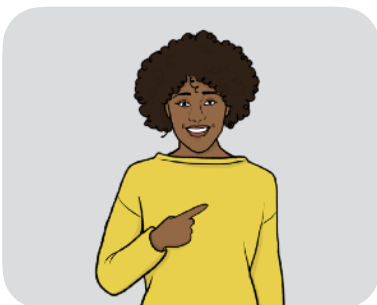
This is information from the **Greater London Authority (GLA)**.



The **GLA** was set up in 1998 after a vote. It includes a Mayor that was chosen by the people of London, and the **London Assembly**.



The **London Assembly** is a group of people who represent Londoners and help make decisions about issues in the city.



This information is about our **New Deal for Young People**.

We will explain about:



- Our **Mentoring** Quality Framework.

**Mentoring** is when someone you trust gives you advice, guidance and support about how to do something.



- Other support for groups that are providing mentoring to young people.

# Our Mentoring Quality Framework



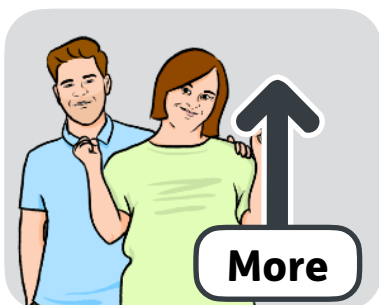
The **Mentoring Quality Framework** is a way of checking that mentoring is good.



We worked with other organisations to make the Mentoring Quality Framework.



We worked with Bloomberg Philanthropies and Action for Race Equality. These are organisations that help people.



The framework aims to make sure there is more very good mentoring across London.



More than 700 organisations have used the framework to improve the mentoring they provide.



Organisations that are applying for funding to provide mentoring must complete the framework first.



You can see the framework on our website here:  
[www.london.gov.uk/who-we-are/  
what-mayor-does/priorities-london/  
londons-recovery-coronavirus-crisis/  
london-partnership-board/recovery-  
context/new-deal-young-people/  
mentoring-quality-framework](http://www.london.gov.uk/who-we-are/what-mayor-does/priorities-london/londons-recovery-coronavirus-crisis/london-partnership-board/recovery-context/new-deal-young-people/mentoring-quality-framework)

# Support for mentoring providers



Organisations that work with young people told us that they would like extra support as well as the framework.

We have asked London Youth and Lifeline to set up extra support, including:



- Training.



- **Workshops** - these are where a group of people do an activity together.

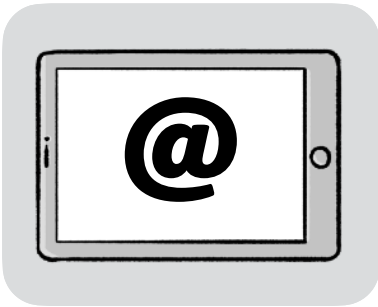


- A **Mentoring Community Network** - this is a way for people to support each other and share advice.





These things will help organisations to get even better at providing mentoring for young people.



You can find out more about this support by emailing:  
[mentoring-support@londonyouth.org](mailto:mentoring-support@londonyouth.org)