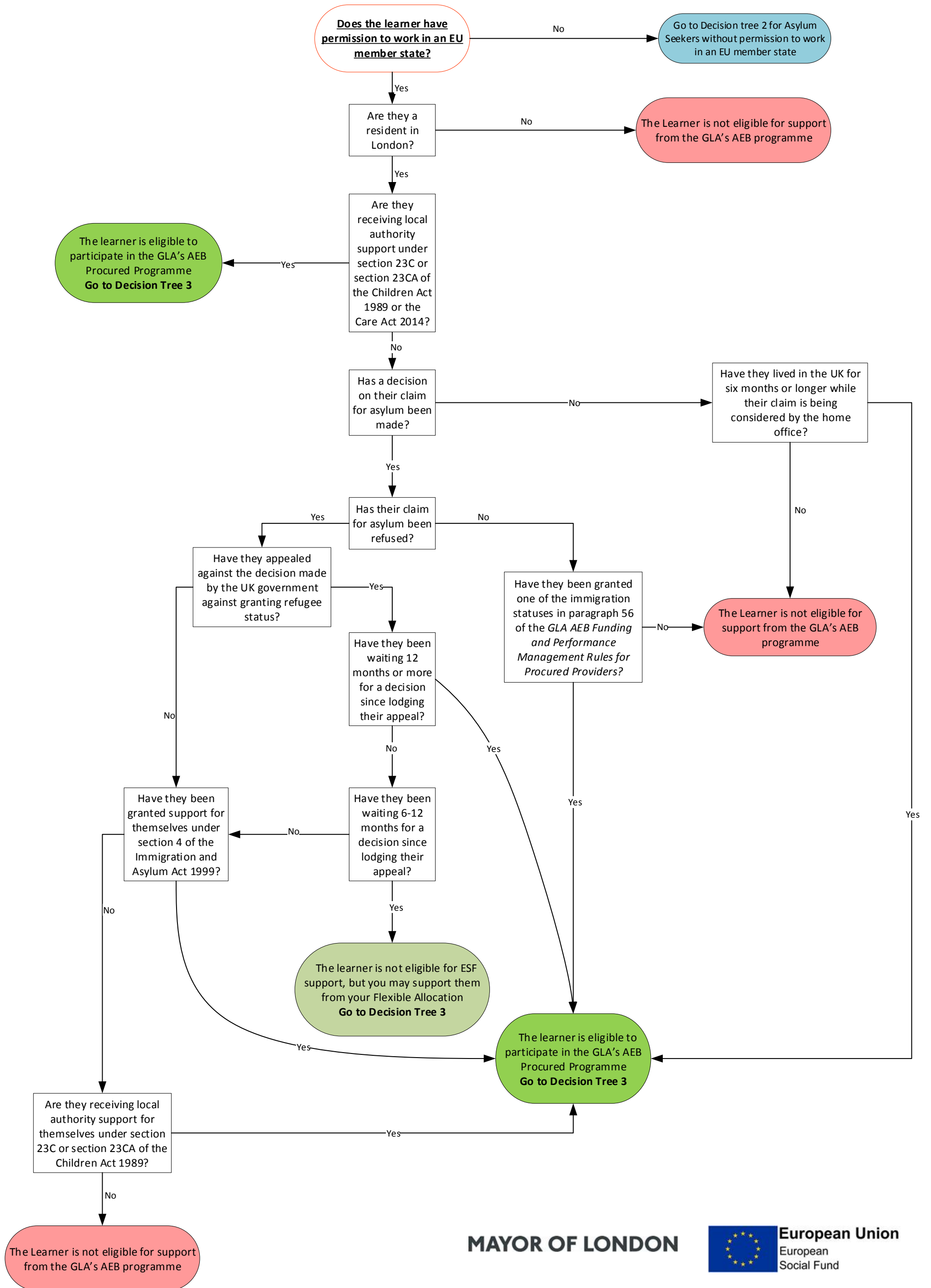
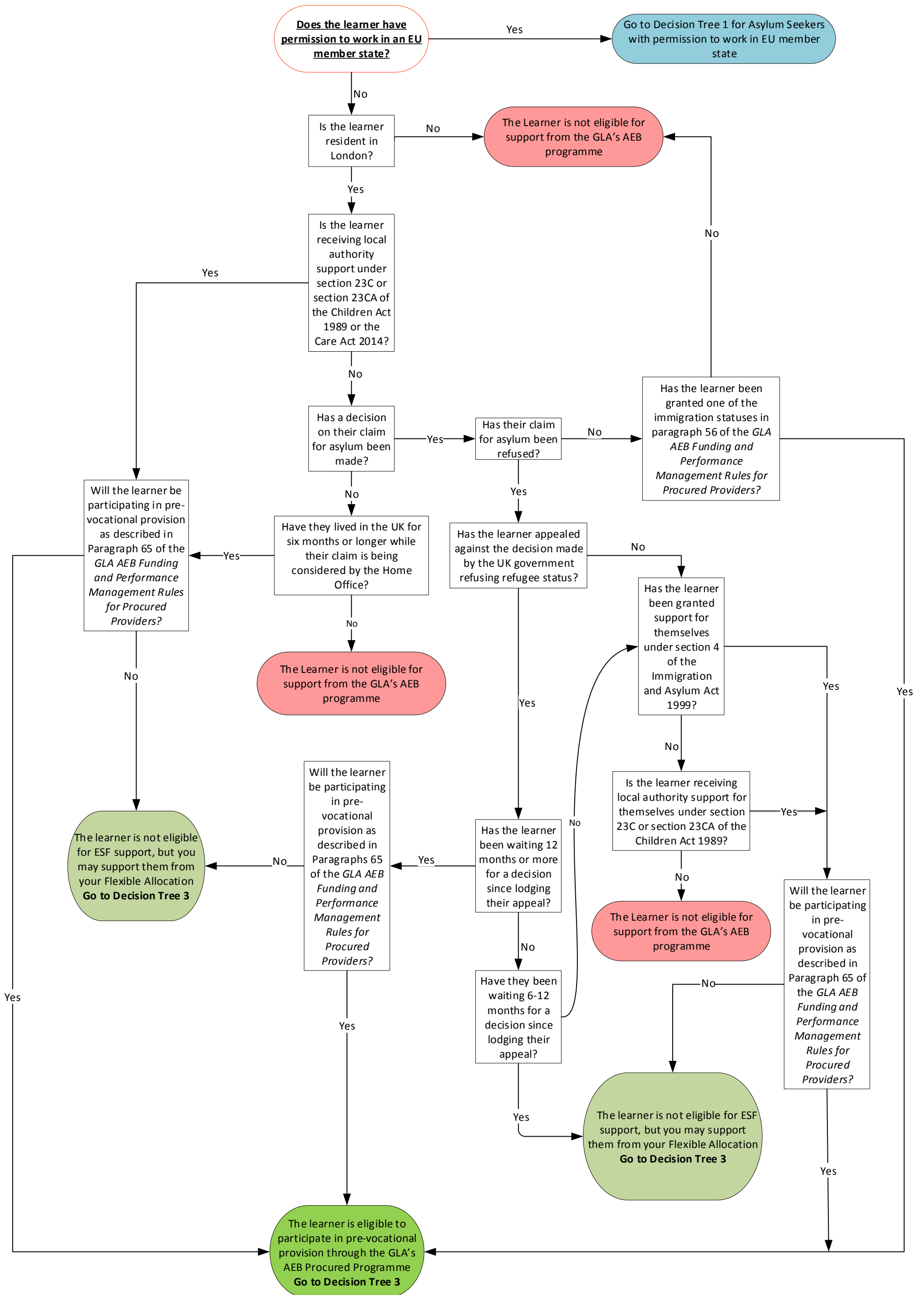


Decision Tree 1: Determining the Eligibility of Asylum Seekers for AEB support: Asylum seekers with permission to work in an EU member state



Decision Tree 2: Determining the Eligibility of Asylum Seekers for AEB support: Asylum seekers without permission to work in an EU member State



Decision Tree 3: Learners who are “full-time students” on the day before their first day of learning

Was the learner a full-time student on the day before their first day of learning

No

See Decision Trees 4 or 5 for unemployed, economically inactive or employed learners.

Yes

Is the learner aged 19-24 AND do you have evidence that the learner is at risk of becoming NEET (not in education or training)?

Yes

For ESF reporting purposes the learner is classified as **“Economically Inactive”**
A learner that is eligible to participate on an AEB Procured programme and can be evidenced as meeting this definition is **eligible to be supported on a Lot 1 Contract** (Lot 1, ESF Priorities 1.1 and 1.2).
See paragraph 152 of the *GLA AEB Funding and Performance Management Rules for Procured Providers*

See Decision Tree 4 for unemployed or economically inactive learners.

No

The Learner is not eligible for ESF support and so **may only be funded from your Flexible Allocation**
See Paragraph 153 of the *GLA AEB Funding and Performance Management Rules for Procured Providers*.

1. Does the learner receive Jobseeker’s Allowance (JSA); **OR**
2. Does the learner receive Universal Credit **AND** their earned income from employment (disregarding benefits) is less than either:
•£338 a month (if the learner is the sole adult in their benefit claim), or
•£541 a month (if the learner has a joint benefit claim with their partner); **OR**
3. Does the learner receive Employment and Support Allowance; **OR**
4. Is the learner released on temporary licence **AND** studying outside a prison environment **AND** not funded by the Ministry of Justice?

No

Does the learner receive state benefits (other than Universal Credit or JSA or ESA); **AND**
Is their earned income (disregarding benefits) less than either:
•£338 a month (if the learner is the sole adult in their benefit claim), or
•£541 a month (if the learner has a joint benefit claim with their partner); **AND**
Does the learner want to be employed, or progress into more sustainable employment; **AND**
Are you (the provider) satisfied the learning is directly relevant to the learner’s employment prospects and the local labour market needs?

No

This learner may be supported on a Lot 1 or Lot 2 AEB Procured contract from your Flexible Allocation. They are not defined as “Unemployed” for the purposes of determining the level of contribution that AEB Procured will fund.

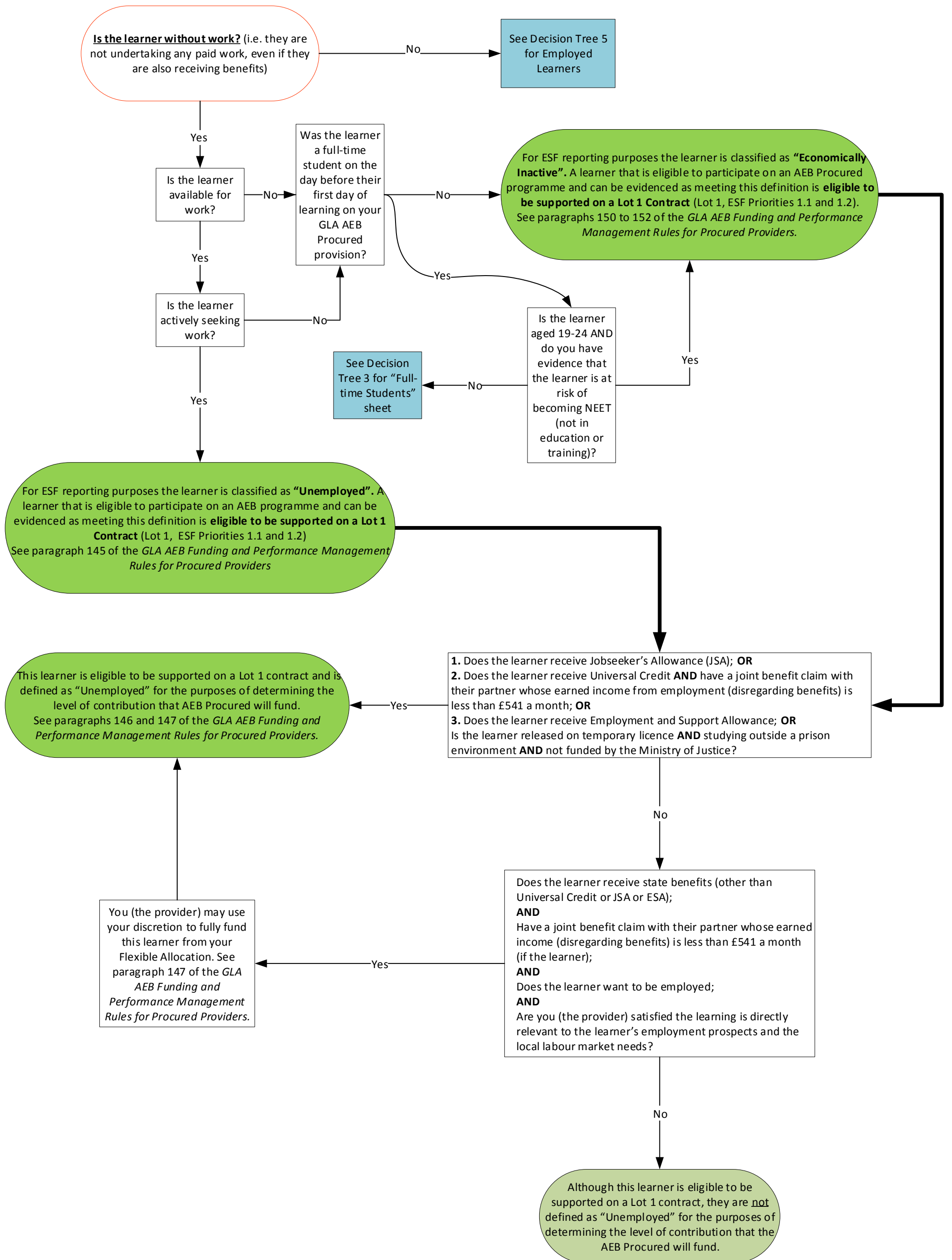
Yes

Yes

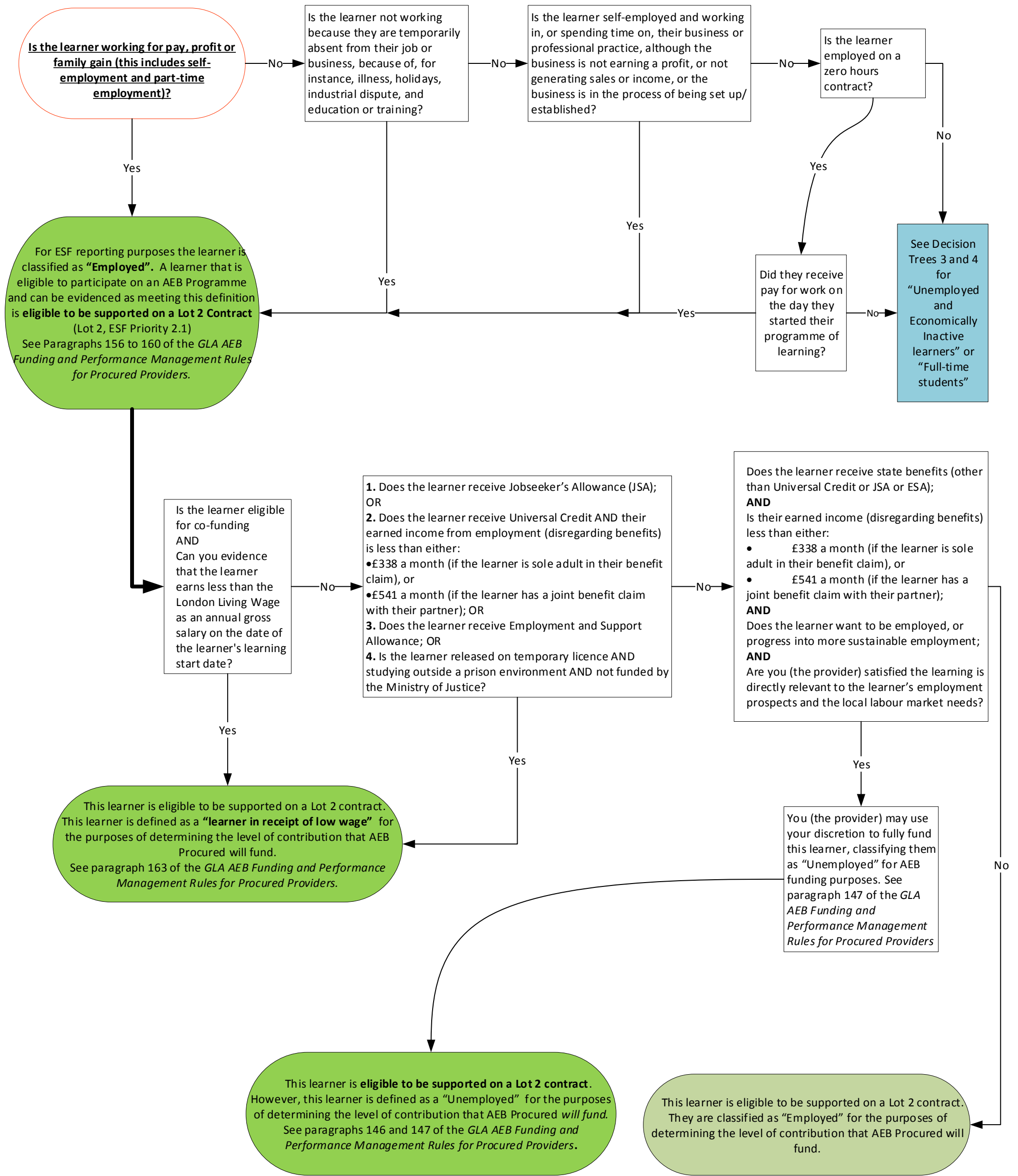
You (the provider) may use your discretion to fully fund this learner from your Flexible Allocation. See paragraph 147 of the *GLA AEB Funding and Performance Management Rules for Procured Providers*.

This learner may be supported on an AEB Procured contract from your Flexible Allocation. They are defined as “Unemployed” for the purposes of determining the level of contribution that AEB Procured will fund.

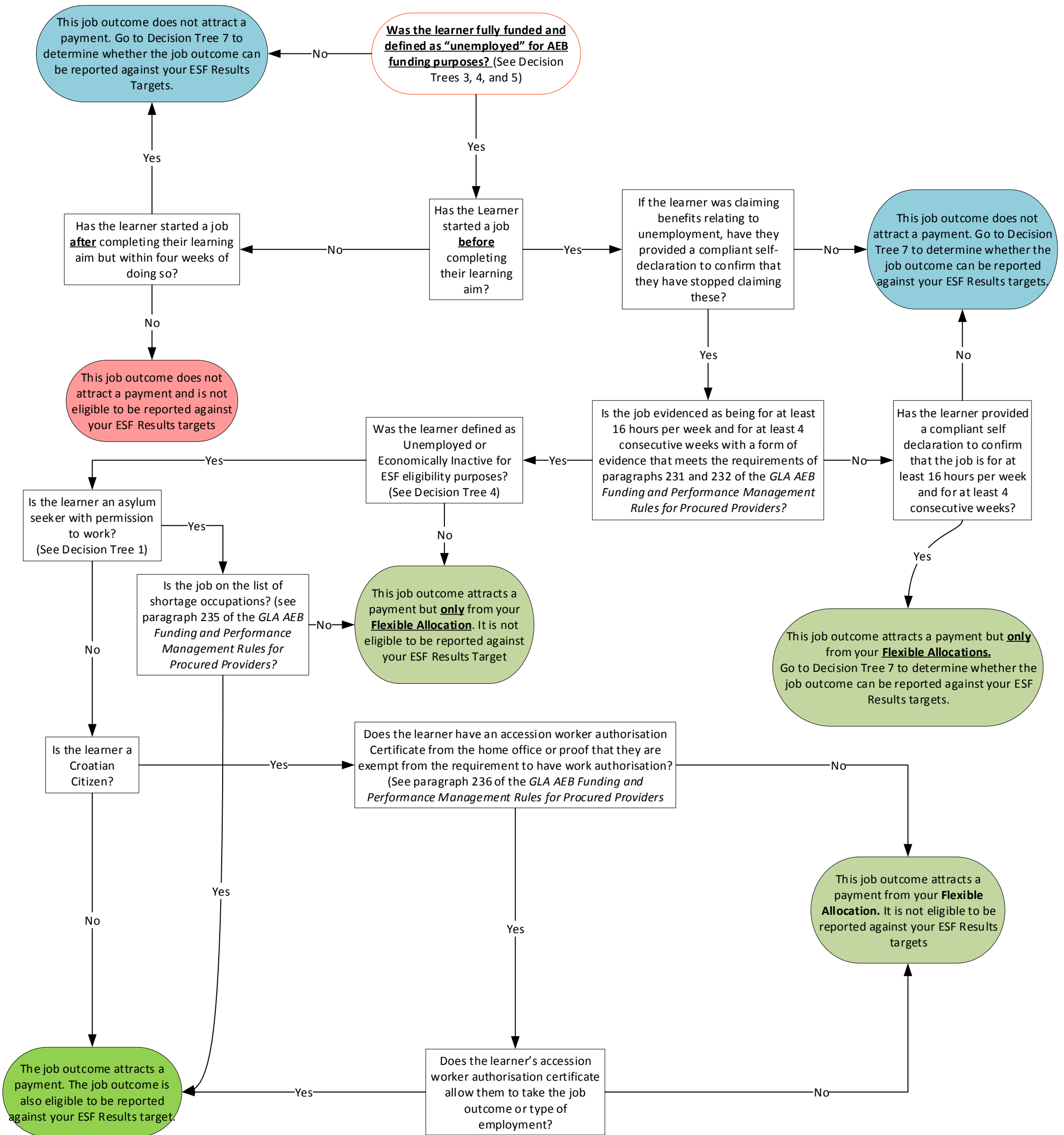
Decision Tree 4: Learners defined as “Unemployed” or “Economically Inactive” for ESF eligibility and AEB funding purposes



Decision Tree 5: Learners defined as “Employed” for ESF eligibility and AEB funding purposes



Decision Tree 6: Job Outcomes attracting Payments (Lot 1 or Lot 2)



Decision Tree 7: Job outcomes that can be reported against ESF Results Targets (Lot 1 Only)

