

# LLDC TRANSPORT UPDATE

## LLDC Board Update

Andrew Tesseyman, Peter Maxwell, Ruth Holmes, Ben Coulter  
09/10/2020

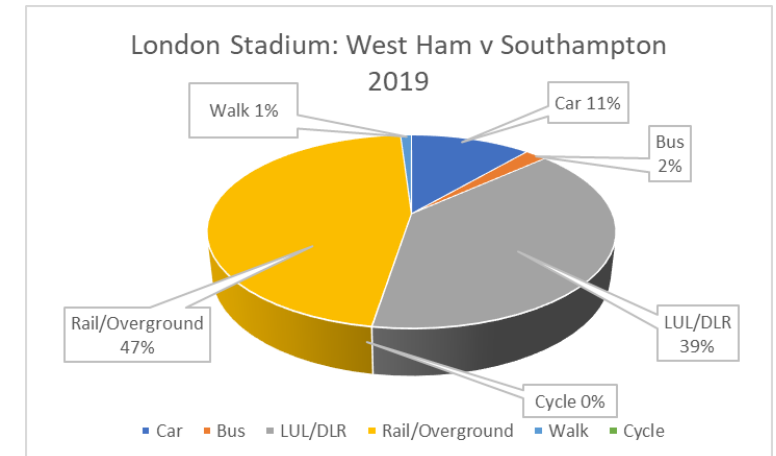
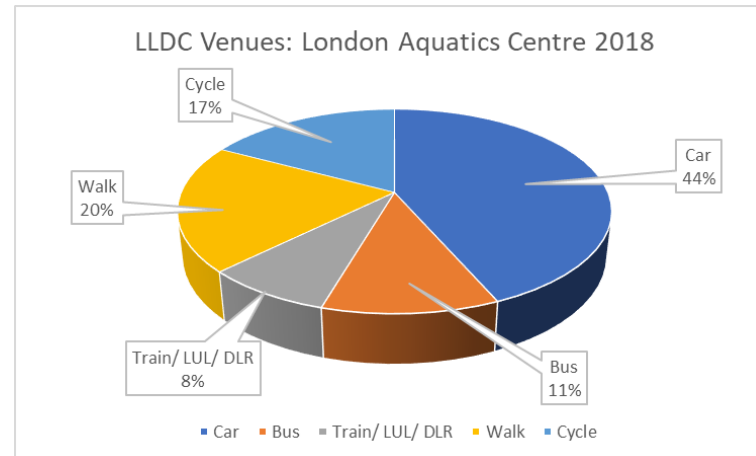
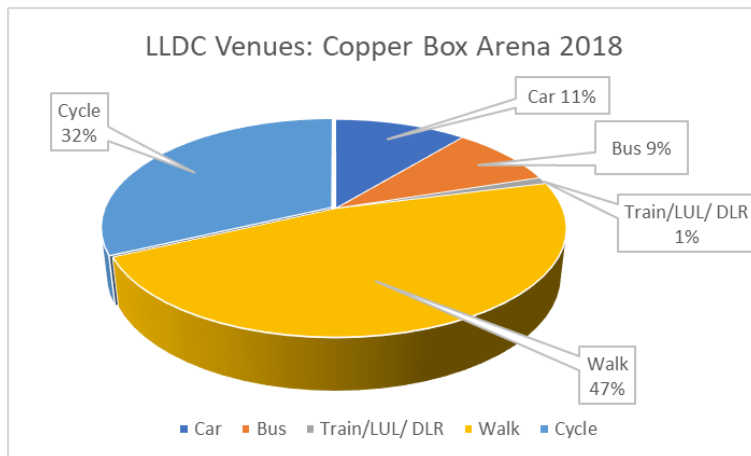
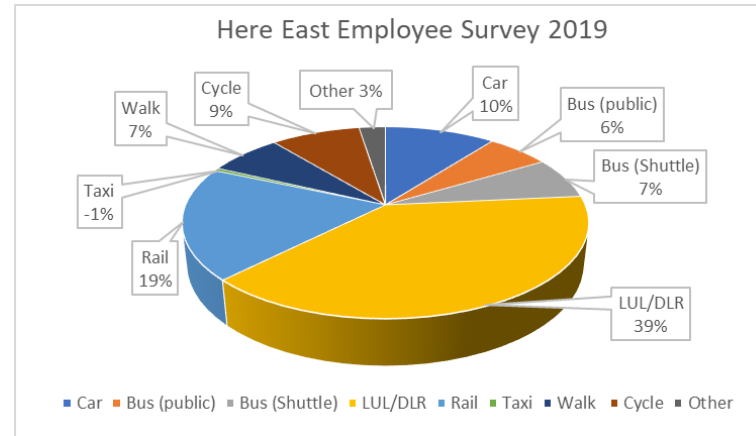
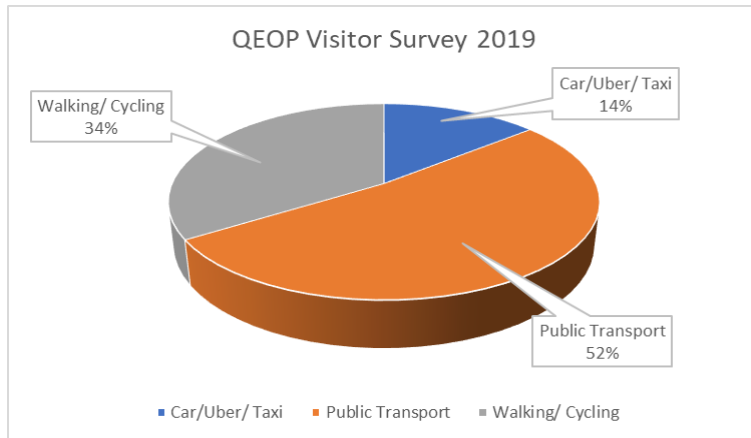
# AGENDA

- 01** Transport – how people are travelling
- 02** Public Transport
- 03** Walking & Cycling Connectivity
- 04** Connectivity Projects
- 05** Advanced Mobility
- 06** Next Steps



# LLDC DESTINATIONS – MODE SHARE

Modal Share shown as percentages from various sources

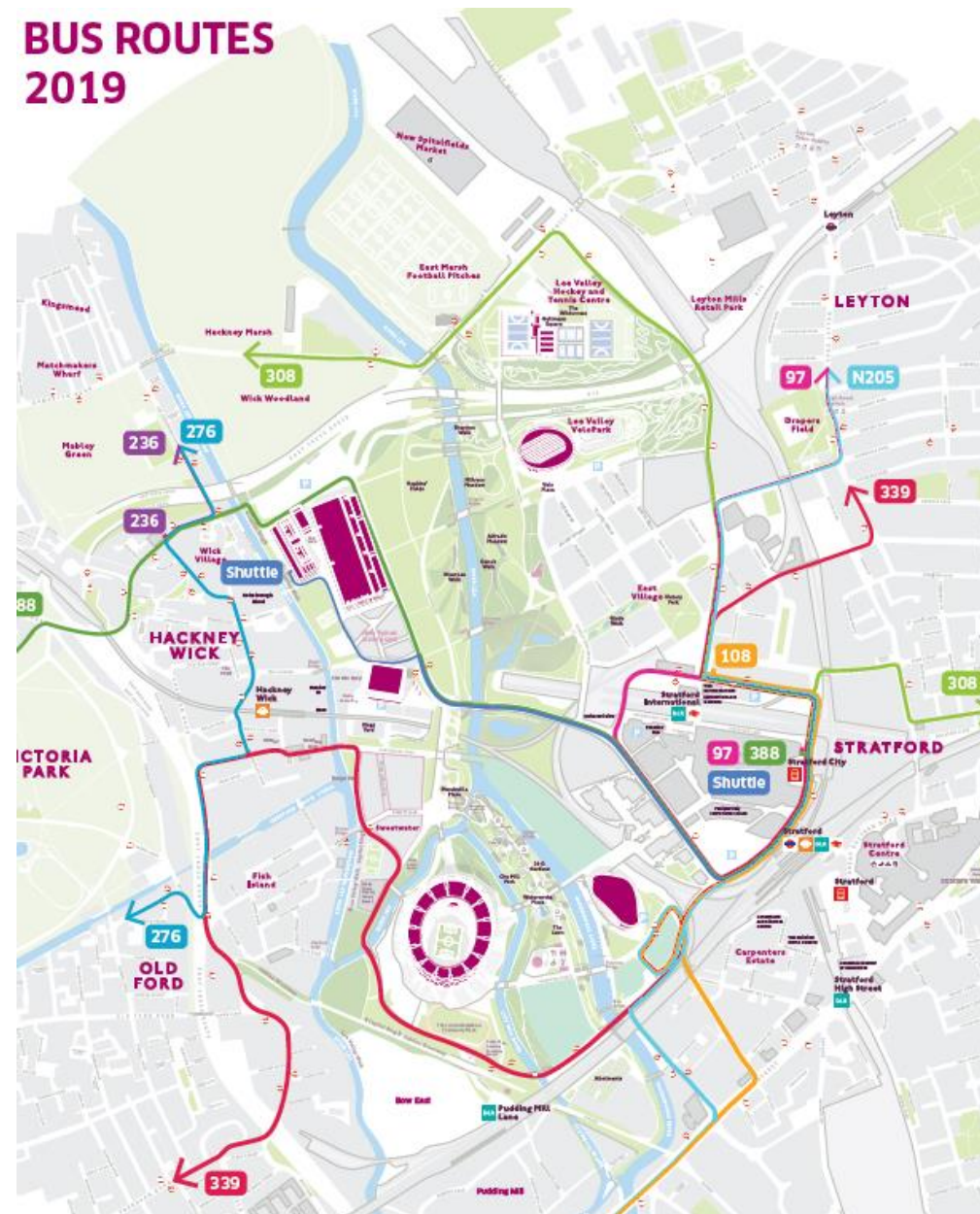


# PUBLIC TRANSPORT

# BUSES

- An extensive network of services has been provided as part of the Post-Games Transformation funding.
- Further additions will be made as a result of East Bank (Carpenters Road to Here East), UCLE (Marshgate Lane).
- Dialogue ongoing with TfL regarding protection of existing services and impact of potential future withdrawal of Here East shuttle service.

## BUS ROUTES 2019



# STRATFORD STATION (REGIONAL)

Leadership meeting with NR, LBN and TfL on 6 November

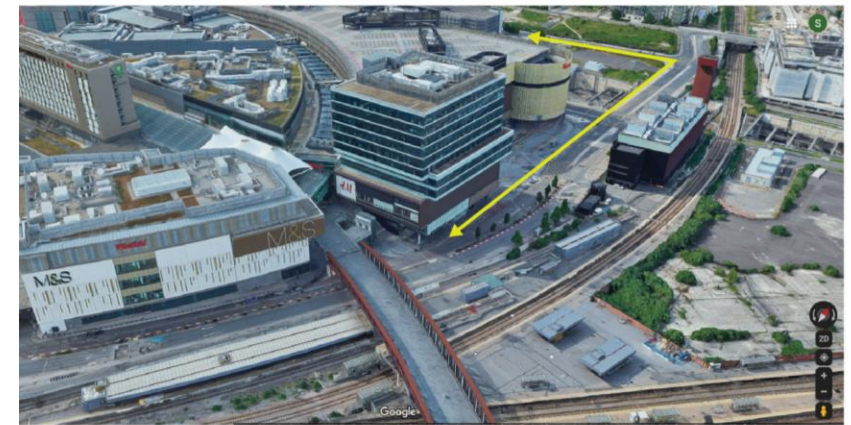
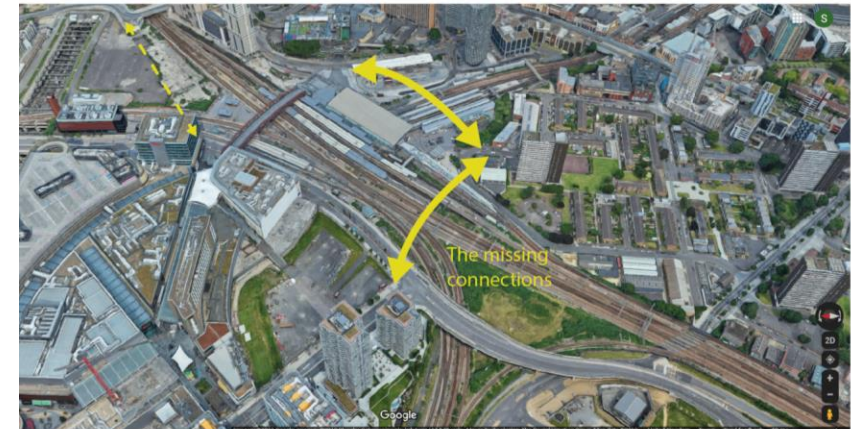
**LLDC to lead SOBC for wider regeneration and long-term solutions to expected problems with station capacity and its potential impact on Stratford**

Efficient station operation fundamental for surrounding economy, jobs and growth

Wider LLDC SOBC to evaluate options

## Key issues to resolve:-

- How to enhance movement across station area – Montfichet Road to Stratford Shopping Centre; Carpenters to Montfichet
- How to enhance connections between Regional and International Station
- Providing transport solutions that sufficient platform and concourse capacity to meet future passenger demand and maintain safety
- Ensure better interchange between other modes
- Reconfiguration to facilitate the creation of new development platforms, where viable



# **WALKING & CYCLING CONNECTIVITY**

# OBJECTIVES

## Connecting people to opportunity

1. Meet our **Local Plan objectives & Priority Themes** – strategically connecting east - west and north - south of the Park
2. **Unlock or safeguard the delivery of new housing** by delivering better connections to them
3. Improved health & well-being from **increased walking and cycling** opportunities
4. **Overcoming severance** with new or improved routes between neighbourhoods
5. Ensuring **safety and security** with any new routes proposed



Accessible pathways on Queen Elizabeth Olympic Park



# ACHIEVEMENTS TO DATE

## Pre 2012 – to date

Tear in London's fabric created by the lower Lea Valley

### Projects:

- Reduced Waterden Road to single carriageway
- Created cycle route to avoid Ruckholt Road roundabout
- New F03 bridge
- Western bridges – H14 and H16
- Leaway
- Marshgate Terrace – north south route

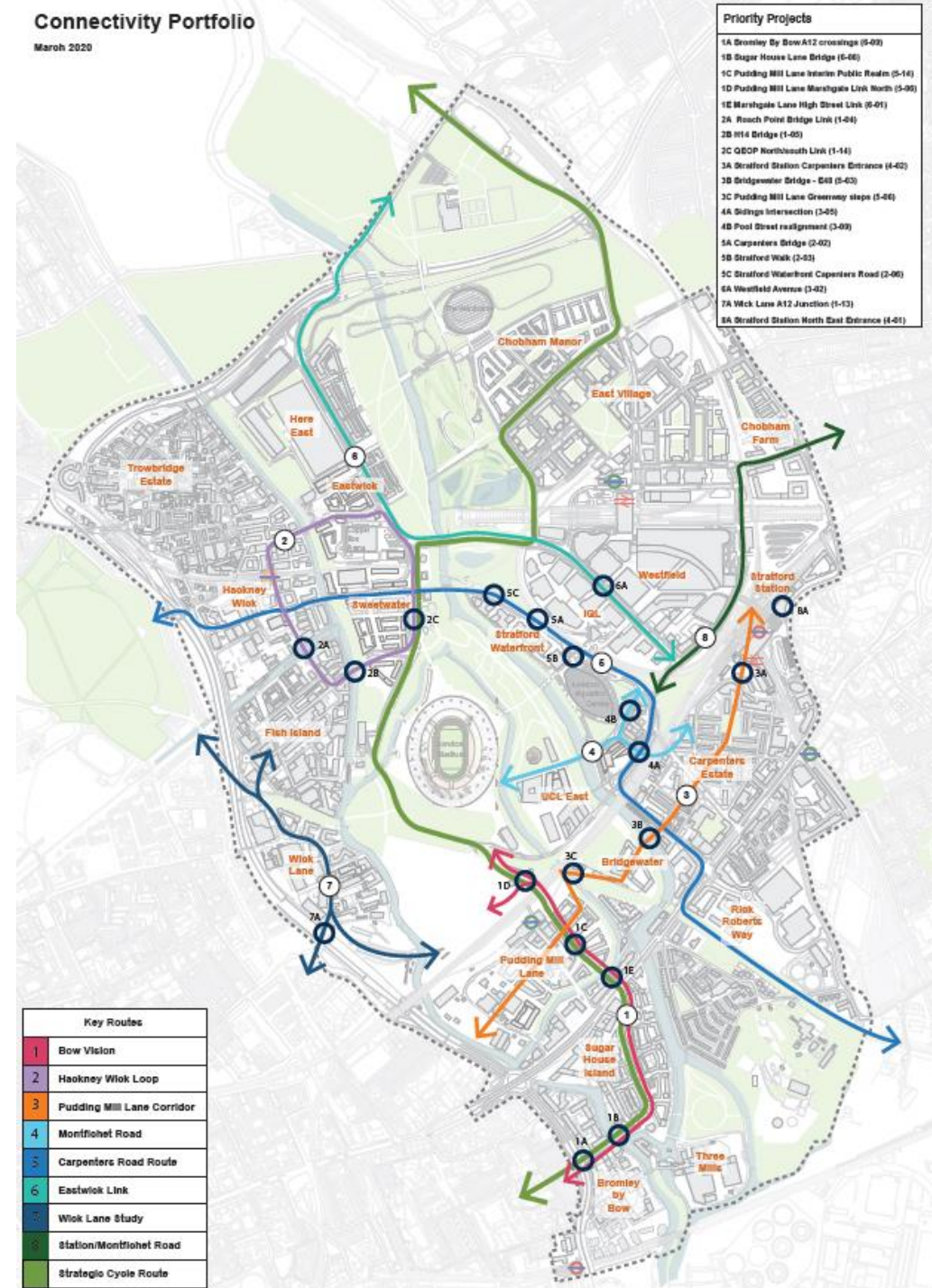


# STRATEGIC ROUTES

Projects grouped into Strategic Routes to strengthen the strategic benefits and outcomes and aid reporting.

Each Route will have a development lead to coordinate with the individual project managers.

- Eight routes connecting east to west / north to south
- It is not proposed that we are undertaking complete renewal of these routes, rather adding missing links
- LLDC will undertake discrete projects within these routes that ‘fixes’ or ‘adds’ missing parts to the network of routes and connections
- Examples of key projects in following slides



# PRIORITISED PROJECT LIST

No:	Project	Delivery organisation	Funding (required)	Funding (available)	Funding Sources
1	Bromley By Bow – A12 Junction	TfL	£20million	£17.5million	S106 / LBTH / TfL
2	Roach Point Bridge link to Hackney Wick Station	Developer	-	-	S106 / Developer
3	<u>H14 bridge between Hackney Wick and Park</u>	LLDC/Developer	(SIW)	(SIW)	LLDC Capital
4	<u>Carpenters Bridge between IQL and SWFT</u>	LLDC	£10million	£5million	LLDC Capital
5	Stratford Station Carpenters Entrance	LUL	£9million	£6.5million	S106 / LBN / LUL
6	Sugar House Lane to Bromley By Bow bus bridge	Developer	-	-	Developer
7	<u>Sidings intersection link</u>	LLDC/Newham	£212k	£212k	S106
8	Stratford Walk	LLDC	c £4.5million	£150k	LLDC Capital/S106
9	<u>SWFT Carpenters Road cycle provision</u>	LLDC	£300k	£190k	LLDC Capital
10	Pudding Mill Lane Interim Public Realm	LLDC	£400k	£200k	S106

— LLDC Projects in progress with funding secured

# CYCLING PROGRAMME

## Quick wins and projects across all boroughs

**Strategic route** identified that is on carriageway running north-south connecting into major routes Cycle Superhighway and Quietways.

PPG funding awarded to implement improvements in the Here East area and resource to seek funding for the rest of the cycling programme.

## Projects identified within LLDC control

- Shared markings on Southern Loop Road at the back of Stadium
- Southern Loop Road Link to the Greenway
- Markings and wayfinding review

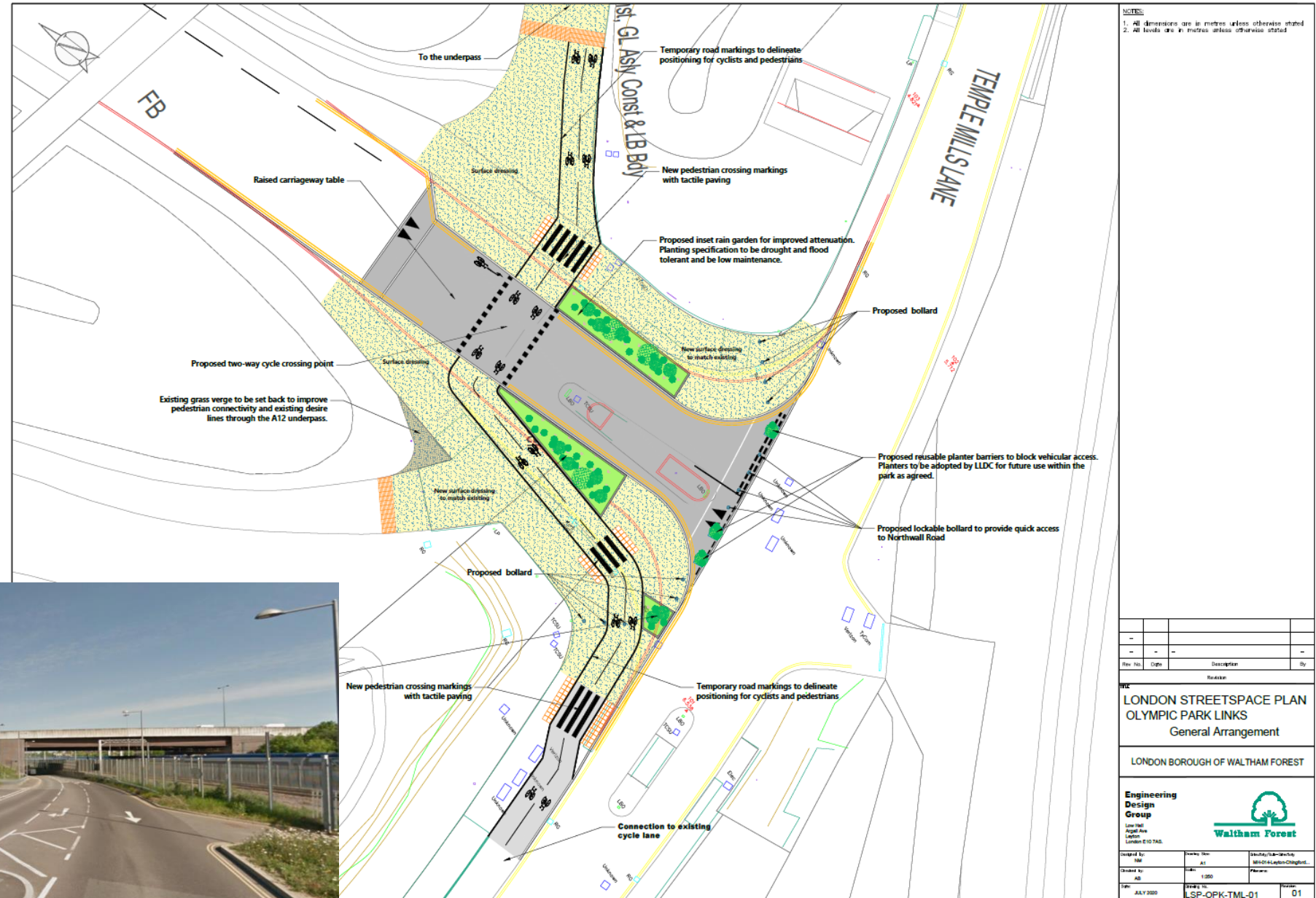
Monitoring projects related to East Wick and Chobham as well as future proposals for Bromley by Bow and Pudding Mill Lane.



# EXAMPLE

## North Wall Road

Led by London Borough of Waltham Forest on LVRPA land supported by LLDC and London Borough of Newham



# ADVANCED MOBILITY

# ADVANCED MOBILITY

## QEOP as a place for Innovation

- Mobility sector needs “real world” testing
- QEOP developing reputation as a place for trialling advanced mobility
- Funding and investment in this sector a key focus of good growth for London
- Trialling new technology needs credibility; rigour; and direct links to policy



# ADVANCED MOBILITY TIMELINE

- 2017: Navya trial. Won Capri and SMLL funding
- 2018: Progressed Capri and SMLL; Bird
- 2019: Capri's first trial on the Park; Driven trial; Bird
- 2020 and beyond: Capri second trial; SMLL opens; EV infrastructure study; Mobility Hub at MSCP; E-bike freight; Covid response
- <https://smartmobility.london/>
- <https://caprimobility.com/>

