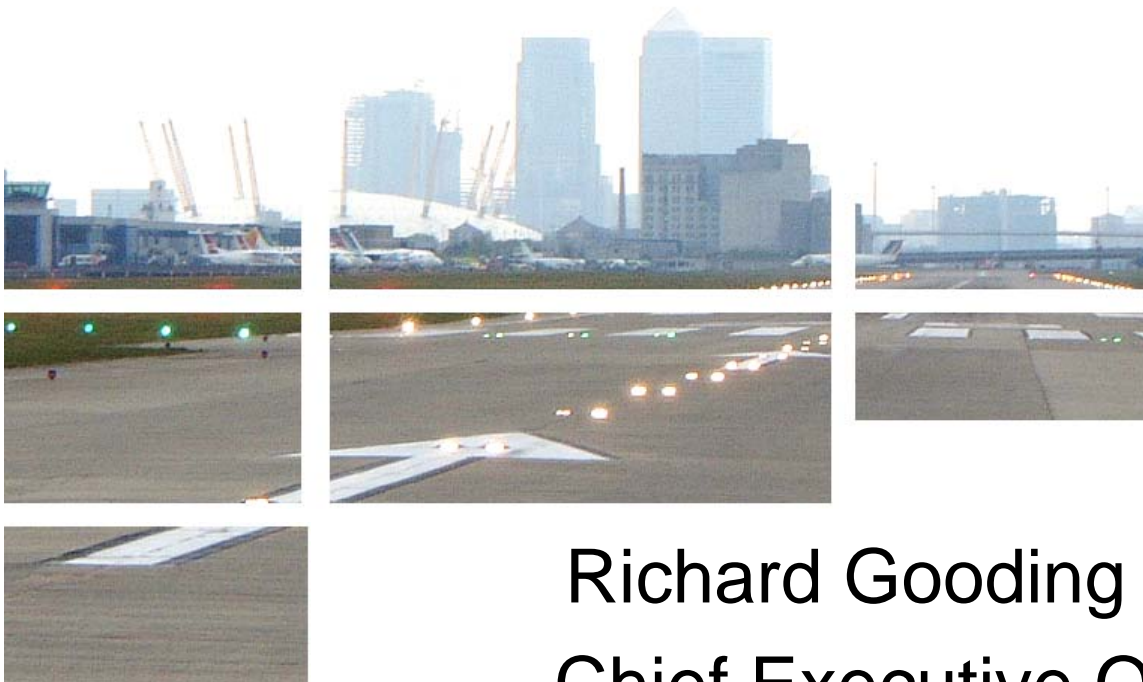




# London City Airport



Richard Gooding OBE  
Chief Executive Officer



# London City Airport

- Airport opened 1987
- 37 Routes, 14 Airlines
- £½ billion annual contribution to UK economy
- Over 2000 jobs
- Forecast 2011:
  - 3 million passengers
  - c67k movements
- Permission to grow to 120,000 movements
- Stringent planning & environmental conditions



# Controls

- 0630 – 2200 weekdays
- No night flights
- 24 hour closure at weekends
- Tight restrictions on 0630-0659 period
- Later opening hours on public holidays
- 5.5° (steep) approach path
- Tight regulations on aircraft types
- Held accountable by:
  - LBN
    - Airport Monitoring Officer
    - Other senior Council Members and Officers
  - Consultative Committee
  - Annual Performance Report





## 2009 S106 Agreement – New Additional Measures

- New Noise Monitoring & Mitigation Strategy
  - Two new air noise monitoring points in Greenwich and Tower Hamlets
  - One new ground noise monitor at Newham Dockside
  - Penalty and Incentives Scheme for airlines
- Enhanced Sound Insulation Scheme
- Noise Insulation Payment Scheme
- Ground Noise & Sound Screen Studies
- Home Purchase Offer Scheme (for properties exposed to 69dB)
- Neighbouring Authority Agreements
  - to extend mitigation schemes to LB Greenwich and LB Tower Hamlets
- Air Quality Action Plan
- Measurement of Airport Odour
- Study into the air quality effects of individual aircraft types
- Sustainability Strategy & Action Plan
- Biodiversity Strategy
- Value Compensation Scheme
- Passenger & Staff Travel Plan
- Wake Turbulence Study



# Air Quality – New Measures

- Air Quality Measurement Programme
- Two automatic **monitoring stations**
  - at the Airport
  - at Newham Dockside
- Measure NO<sub>2</sub> and PM<sub>10</sub>
- Network of 17 diffusion tubes to assess spatial pattern of NO<sub>2</sub>
- 2010 Results
  - NO<sub>2</sub> and PM<sub>10</sub> – **no exceedences** of EU limit values or UK air quality objectives
  - Quarterly and annual reports available on [www.lcacc.org](http://www.lcacc.org)
- **Air Quality Action Plan**
  - Priorities for management & mitigation
- **Travel Plan** to promote public transport use
  - Staff & passengers







# Noise Controls

## Existing

- Strictest noise control regime of any UK airport
- Noise and track monitoring system (4 monitors) in place – accessible to LBN
- Noise Management Scheme in place – reported to LCACC
- All environmental complaints investigated & responded to - reported to LCACC each quarter
- Sound Insulation Scheme in place since 1990
  - Trigger level for eligibility set at 57dB – lowest level of any UK airport

## Additional post planning permission

- 3 new noise monitors (2 in neighbouring boroughs)
- New noise and track keeping equipment with Webtrack for public access
- 2 mobile noise monitors as back-up/for ad hoc investigation
- Environmental complaints and enquiries reported to LBN every 2 weeks
  - **(55 environmental complaints in 2010, of which 36 related to aircraft noise at LCY)**
- Sound Insulation Scheme
  - Enhanced insulation to properties (inc public buildings) exposed to 66dB
  - Re-inspection of previously treated properties

## DfT/Defra compliance via Noise Action Plan



## 2009 S106 Agreement – New Additional Measures

- New Noise Monitoring & Mitigation Strategy
  - Two new air noise monitoring points in Greenwich and Tower Hamlets
  - One new ground noise monitor at Newham Dockside
  - Enhanced Penalty and Incentives Scheme for airlines
- Enhanced Sound Insulation Scheme
- Noise Insulation Payment Scheme
- Ground Noise & Sound Screen Studies
- Home Purchase Offer Scheme (for properties exposed to 69dB)
- Neighbouring Authority Agreements
  - to extend sound insulation scheme to LB Greenwich and LB Tower Hamlets
- Air Quality Action Plan
- Measurement of Airport Odour
- Study into the air quality effects of individual aircraft types
- Sustainability Strategy & Action Plan
- Biodiversity Strategy
- Value Compensation Scheme
- Passenger & Staff Travel Plan
- Wake Turbulence Study

# Questions?

# LondonCityAirport

