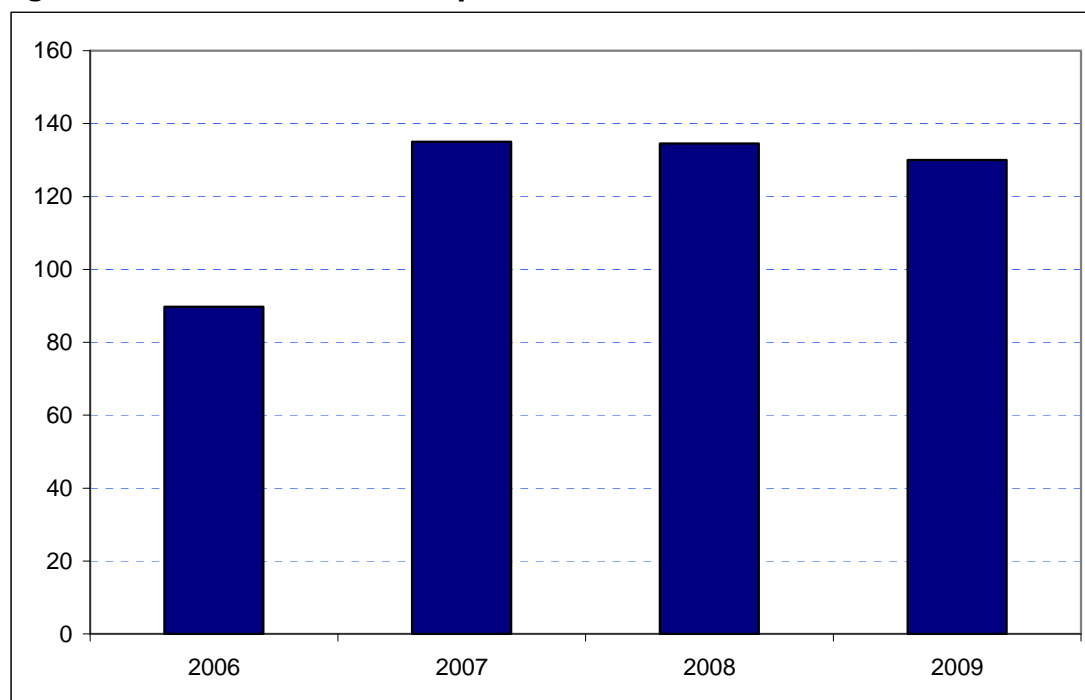


Enfield

Borough Rank: 22

Estimates in Figure 5.10 show a slight net fall in Enfield's overseas visitor spend since 2007. Expenditure was broadly constant between 2007 and 2008 at £135 million before dropping to £130 million in 2009. These three years of data estimates are some margin above that for 2006.

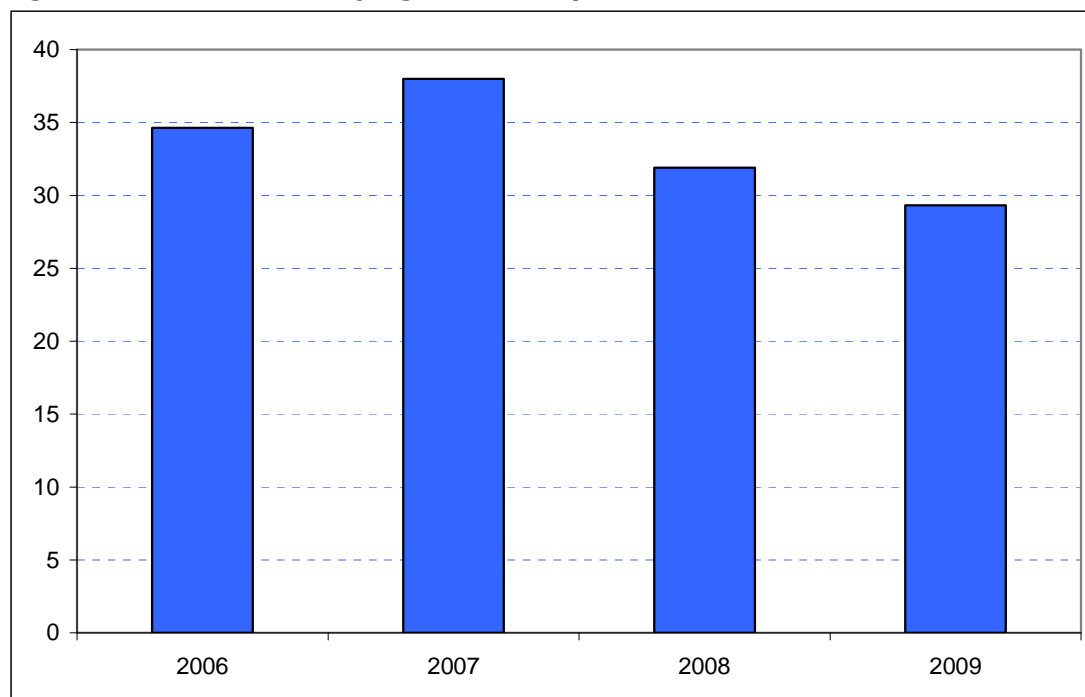
Figure 5.10: Overseas tourism expenditure in Enfield (£ millions)



Sources: IPS, BRES, LDA surveys and GLA Economics calculations

Figure 6.10 contains estimates by domestic overnight visitors in Enfield. These show falling domestic overnight spend in the Borough since 2007. In 2007 spend was estimated to be £38 million. This is estimated to have dropped to £32 million in 2008 and then to £29 million in 2009.

Figure 6.10: Domestic staying tourism expenditure in Enfield (£ millions)



Sources: UKTS, BRES, LDA surveys and GLA Economics calculations

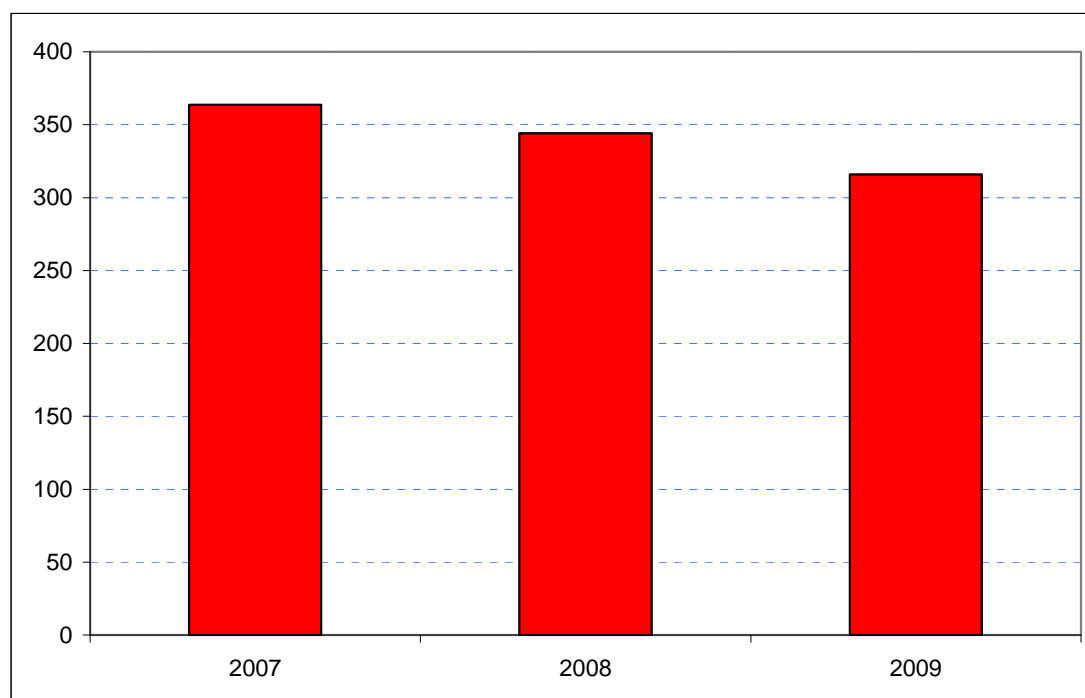
An experimental estimate of day visitor spend is provided in Tables 2a and 2b of Chapter 2. It should be emphasised that these are modelled estimates and further details of the data issues presented by day visitor tourism can be found in GLA Economics' Current Issues Note 29¹⁶. Details of the modelling and changes to it from previous LATI estimates can be found in the methodology section.

When the experimental day visitor estimates are included, total estimated tourist expenditure fell between 2007 and 2009 as shown in Figure 7.10. Receipts in 2007 had been £365 million, falling to £344 million in 2008 and £316 million in 2009. Data for 2006 were excluded from the graphic as they would have introduced the additional problem of a change of survey basis for the day visitor estimates prior to 2007.

¹⁶ <http://www.london.gov.uk/publication/estimating-contribution-leisure-day-visitors-londons-tourism-industry>

GLA Economics - Estimating the contribution of leisure day visitors to London's tourism industry (March 2011)

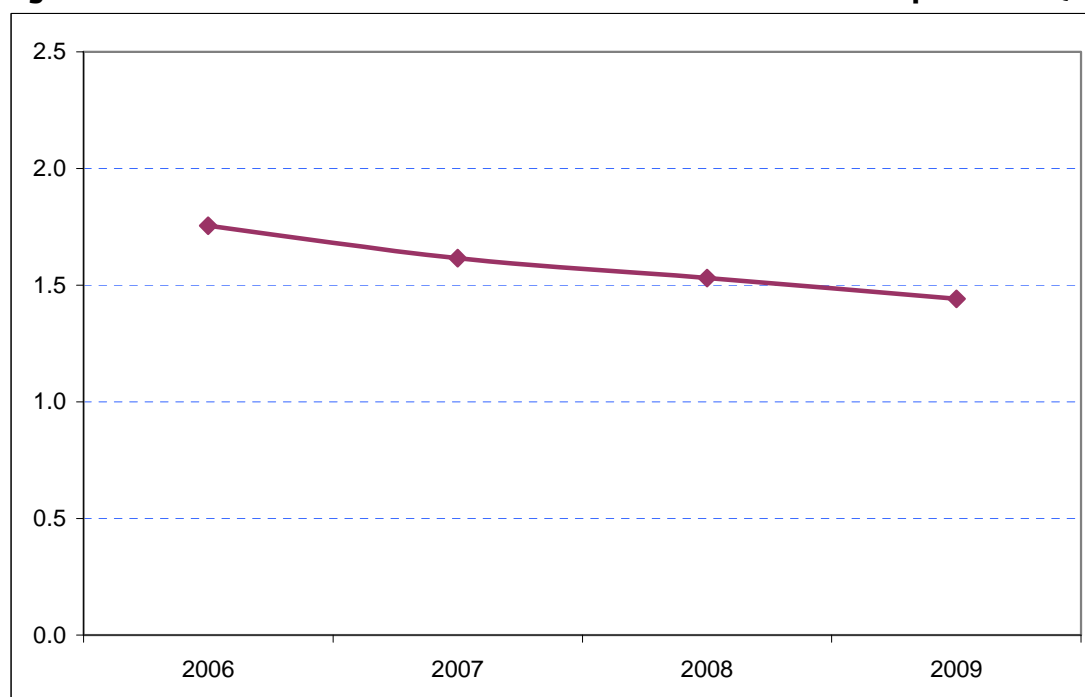
Figure 7.10: Estimates of total tourism expenditure in Enfield including experimental estimates of day visitor spend (£ millions)



Sources: IPS, UKTS, BRES, LDA surveys and GLA Economics calculations

Figure 8.10 shows that Enfield's share of total London tourism expenditure has fallen from 1.8 per cent in 2006 to 1.4 per cent in 2009.

Figure 8.10: Enfield's estimated share of total London tourism expenditure (%)



Sources: IPS, UKTS, BRES, LDA surveys and GLA Economics calculations