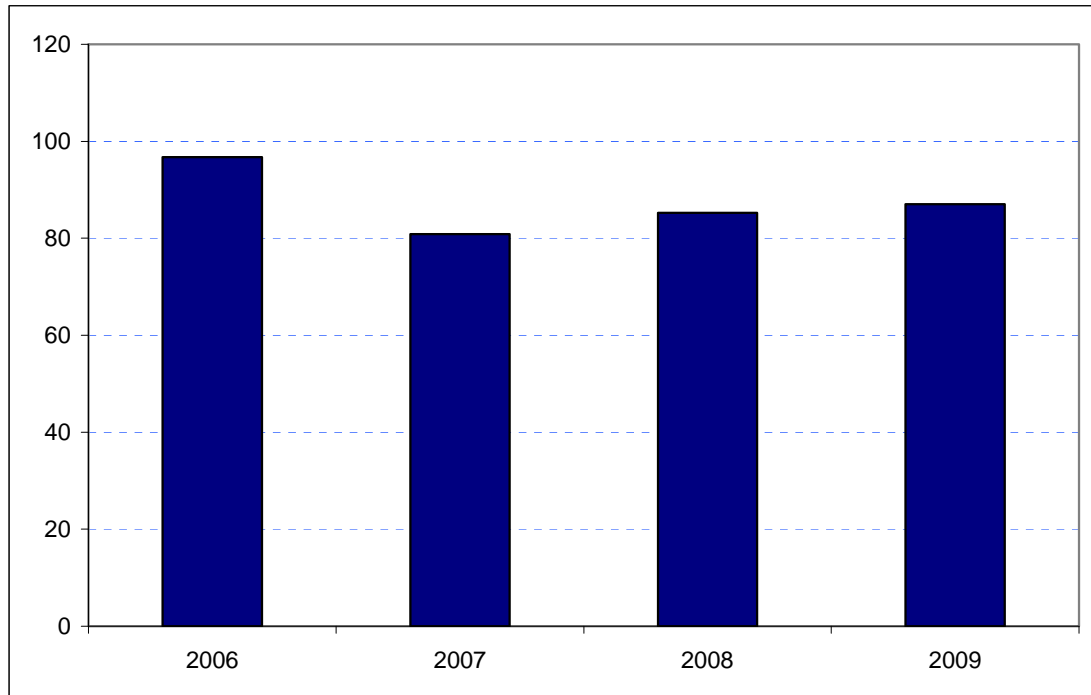


Bexley
Borough Rank: 27

Estimates in Figure 5.3 show an increase in overseas visitor spend in Bexley from its 2007 level although expenditure is still estimated to be down on 2006. Spending rose from £81 million in 2007 to £85 million in 2008 and to £87 million in 2009.

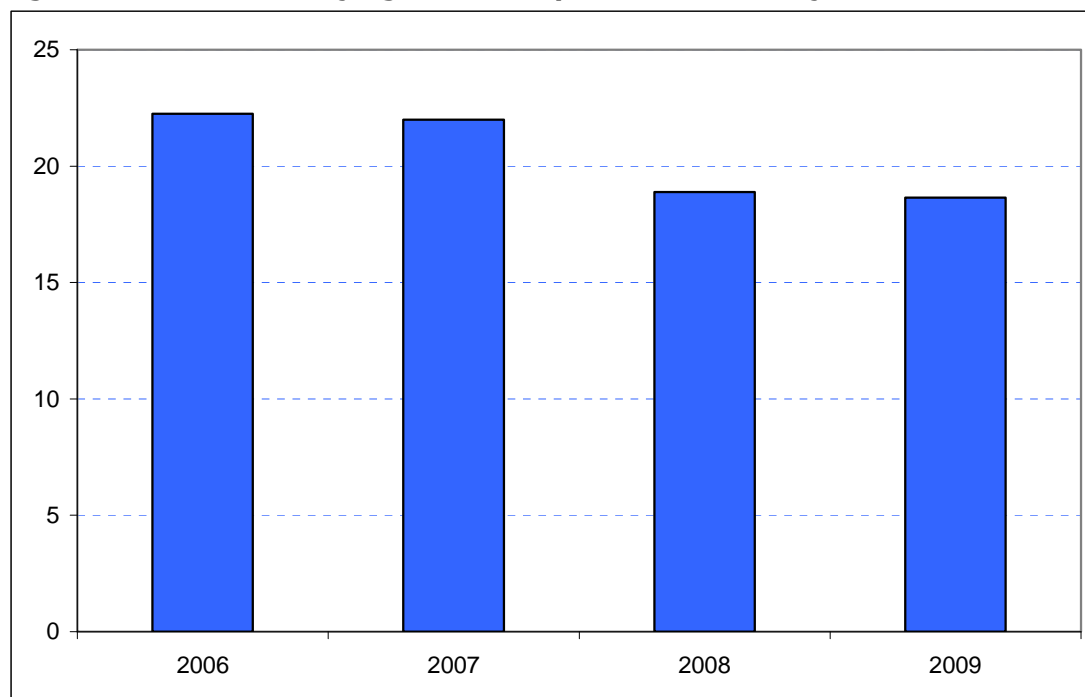
Figure 5.3: Overseas tourism expenditure in Bexley (£ millions)



Sources: IPS, BRES, LDA surveys and GLA Economics calculations

Figure 6.3 contains estimates by domestic overnight visitors in Bexley. These indicate a considerable fall in receipts when compared to 2006. Receipts fell marginally to £22 million in 2007, more steeply to £19 million in 2008 and were broadly stable in 2009.

Figure 6.3: Domestic staying tourism expenditure in Bexley (£ millions)



Sources: UKTS, BRES, LDA surveys and GLA Economics calculations

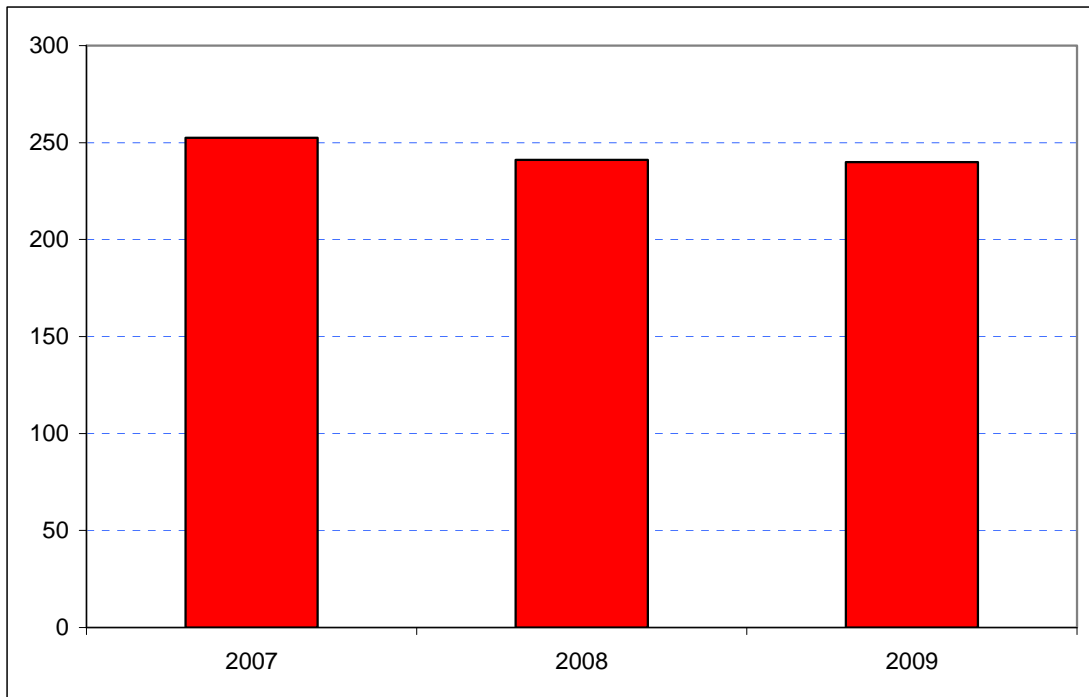
An experimental estimate of day visitor spend is provided in Tables 2a and 2b of Chapter 2. It should be emphasised that these are modelled estimates and further details of the data issues presented by day visitor tourism can be found in GLA Economics' Current Issues Note 29⁹. Details of the modelling and changes to it from previous LATI estimates can be found in the methodology section.

When the experimental day visitor estimates are included, total estimated tourism expenditure in Bexley has fallen since 2007 from £254 million to £241 million in 2008 and to £240 million in 2009 as shown in Figure 7.3. Data for 2006 were excluded from the graphic as they would have introduced the additional problem of a change of survey basis for the day visitor estimates prior to 2007.

⁹ <http://www.london.gov.uk/publication/estimating-contribution-leisure-day-visitors-londons-tourism-industry>

GLA Economics - Estimating the contribution of leisure day visitors to London's tourism industry (March 2011)

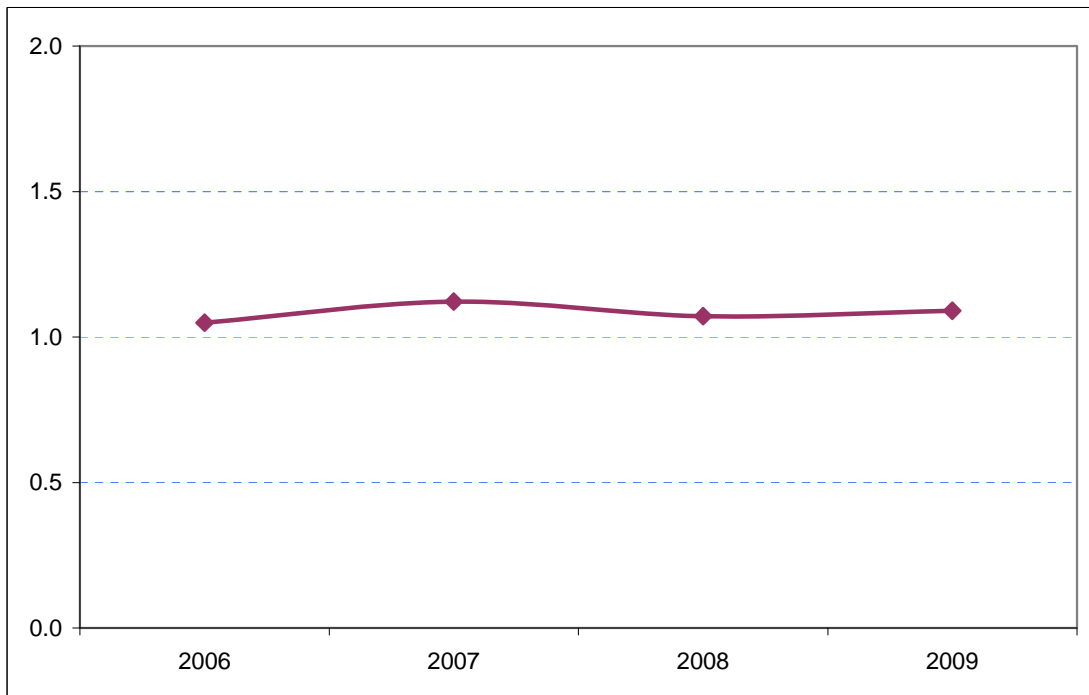
Figure 7.3: Estimates of total tourism expenditure in Bexley including experimental estimates of day visitor spend (£ millions)



Sources: IPS, UKTS, BRES, LDA surveys and GLA Economics calculations

Figure 8.3 shows that Bexley represents just over 1 per cent of London's total tourism spend. This is estimated to have peaked in 2007 before falling back slightly in subsequent years.

Figure 8.3: Bexley's estimated share of total London tourism expenditure (%)



Sources: IPS, UKTS, BRES, LDA surveys and GLA Economics calculations