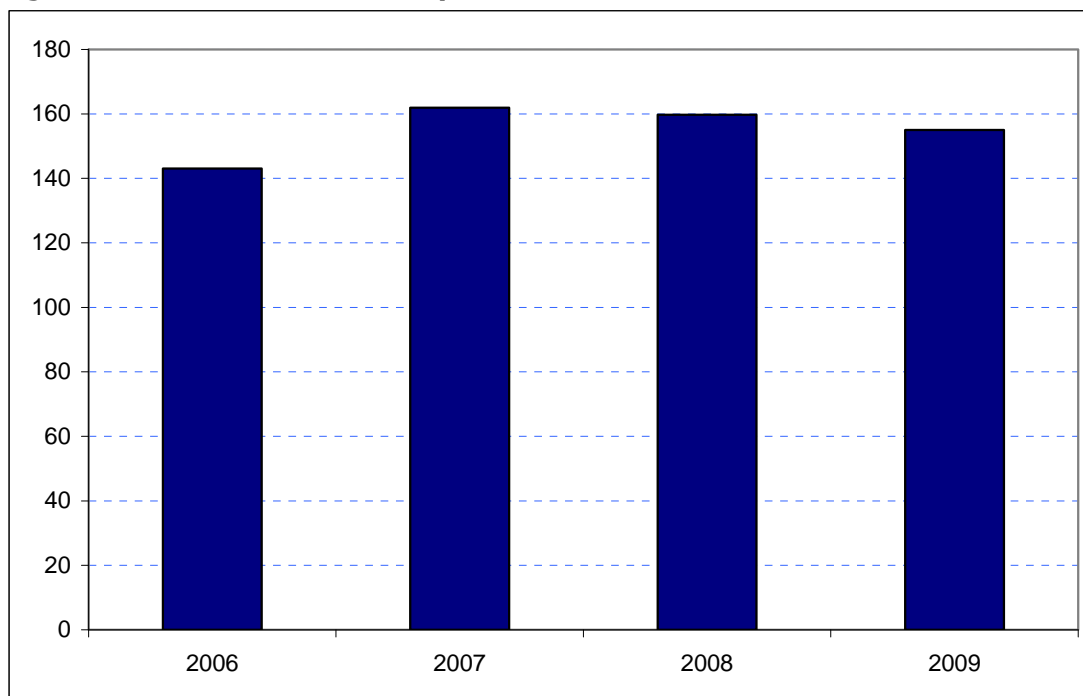


Barnet
Borough Rank: 10

Estimates in Figure 5.2 show a slight decrease in overseas visitor spend in Barnet from its 2007 level although it is still estimated to be up on 2006. Spending fell from £162 million in 2007 to £160 million in 2008 and to £155 million in 2009.

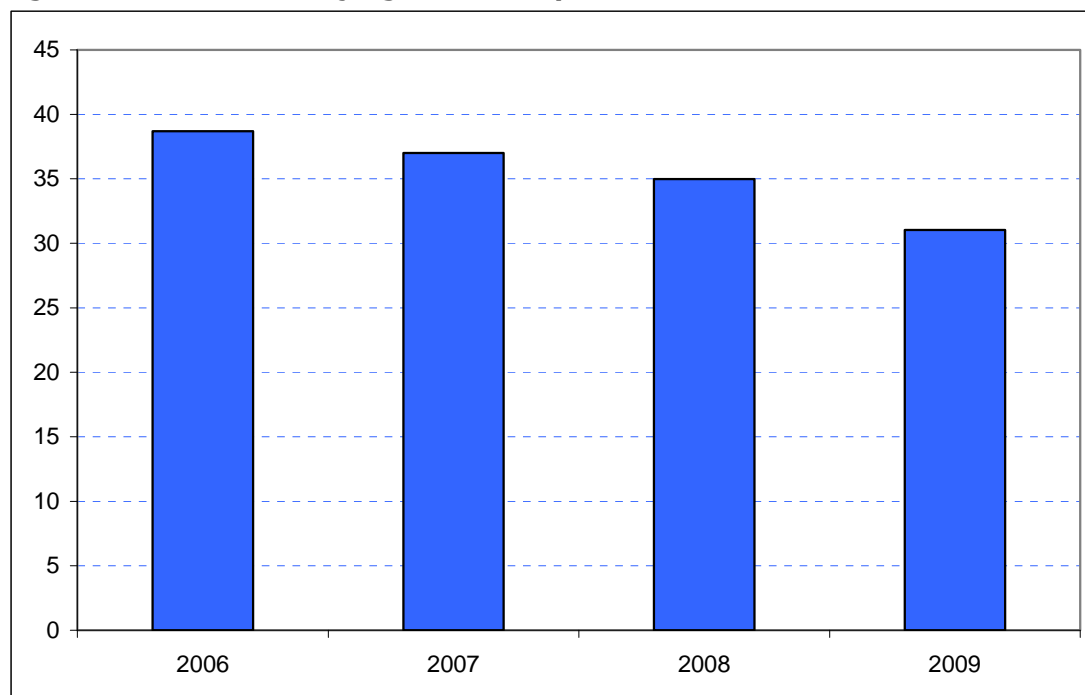
Figure 5.2: Overseas tourism expenditure in Barnet (£ millions)



Sources: IPS, BRES, LDA surveys and GLA Economics calculations

Figure 6.2 contains estimates by domestic overnight visitors in Barnet. These indicate a relatively sharp fall in receipts when compared to 2006. Receipts fell to £37 million in 2007 and were relatively stable in 2008 at £35 million before falling to £31 million in 2009.

Figure 6.2: Domestic staying tourism expenditure in Barnet (£ millions)



Sources: UKTS, BRES, LDA surveys and GLA Economics calculations

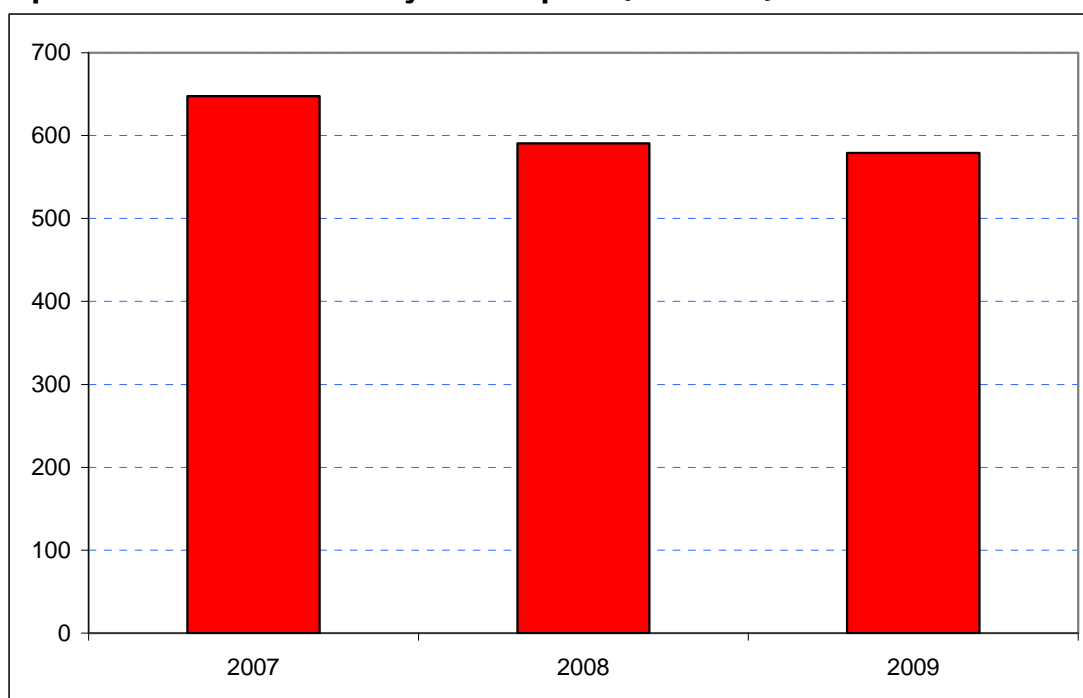
An experimental estimate of day visitor spend is provided in Tables 2a and 2b of Chapter 2. It should be emphasised that these are modelled estimates and further details of the data issues presented by day visitor tourism can be found in GLA Economics' Current Issues Note 29⁸. Details of the modelling and changes to it from previous LATI estimates can be found in the methodology section.

When the experimental day visitor estimates are included, total estimated tourism expenditure in Barnet has fallen since 2007 from £650 million to £591 million in 2008 and to £579 million in 2009 as shown in Figure 7.2. Data for 2006 were excluded from the graphic as they would have introduced the additional problem of a change of survey basis for the day visitor estimates prior to 2007.

⁸ <http://www.london.gov.uk/publication/estimating-contribution-leisure-day-visitors-londons-tourism-industry>

GLA Economics - Estimating the contribution of leisure day visitors to London's tourism industry (March 2011)

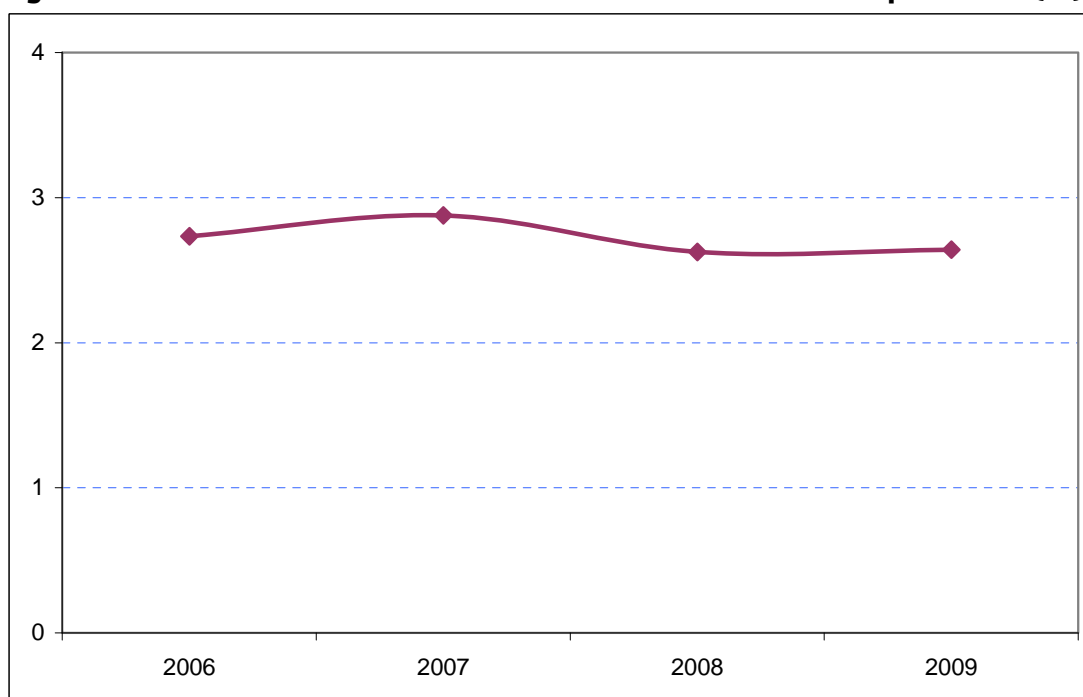
Figure 7.2: Estimates of total tourism expenditure in Barnet including experimental estimates of day visitor spend (£ millions)



Sources: IPS, UKTS, BRES, LDA surveys and GLA Economics calculations

Figure 8.2 shows that Barnet represents just under 3 per cent of London's total tourism spend. This peaked at 2.9 per cent in 2007 and has since fallen back to 2.6 per cent.

Figure 8.2: Barnet's estimated share of total London tourism expenditure (%)



Sources: IPS, UKTS, BRES, LDA surveys and GLA Economics calculations