

GREATER LONDON AUTHORITY

[REDACTED]
(By email)

Our Ref: MGLA250319-8616

13 May 2019

Dear [REDACTED]

Thank you for your request for information which the GLA received on 25 March 2019. Your request has been dealt with under the Environmental Information Regulations (EIR) 2004.

You asked for;

I would like to request the following information in relation to the Gurnell Leisure Centre Redevelopment and the proposed housing development:

- a) *A list of correspondence between the GLA and Ealing Council from 1 February 2018 up until the present (relating to the Gurnell redevelopment.)*
- b) *A list of correspondence between the GLA and EcoWorld or Be Living or Wilmott Dixon between February 2018 and the present (relating to the Gurnell redevelopment.)*
- c) *A copy of each of those correspondence and any attachments or documents for the same time frame.*

Please find below a list of correspondence within scope of your request and attached to this response [Part 1]

Part A correspondence	
Page 1	24/01/2019 Email: <i>FW: EcoWorld and Gurnell Leisure Centre - Ealing</i>
Page 2	29/03/2018 Email: <i>Fwd: Gurnell Leisure Centre</i>
Page 3 - 4	29/03/2018 Email chain: <i>RE: Gurnell Leisure centre</i>
Page 5 - 6	26/03/2018 Email chain: <i>GLA/4287 Gurnell leisure centre - GLA pre-application advice</i>
Page 7	23/02/2018 Email: <i>Gurnell Lesiure Centre</i>
Page 8	08/02/2018 Email: <i>Cancelled: Gurnell Leisure Centre & enabling development - viability meeting</i>
Page 9	02/02/2018 Email: <i>Gurnell & Kellogg Tower</i>
Part B correspondence	
Page 1 - 14	15/02/2019 GLA Assessment
Page 15 - 17	20/04/2018 Email chain: <i>GLA/4287 Gurnell leisure centre - GLA pre-application advice</i>
Page 18 - 20	17/04/2018 Email chain: <i>RE: GLA/4287 Gurnell leisure centre - GLA pre-application advice</i>
Page 21 - 22	26/04/2018 Email chain: <i>RE: GLA/4287 Gurnell leisure centre - GLA pre-application advice</i>
Page 23 - 36	23/03/2018 GLA Assessment

Page 36 – 38	20/03/2018 Email chain: <i>Gurnell Leisure Centre: Report</i>
Page 39	09/03/2018 Email: <i>Gurnell Leisure Centre</i>
Attachments	
	2018.04.09_Massing_Options_presentation [File ref: MGLA250319-8616 Part 2]
	2018.08.29_Gurnell Leisure Presentation [File ref: MGLA250319-8616 Part 2]
	2018.10.10_Gurnell Leisure Presentation_GLA [File ref: MGLA250319-8616 Part 4]
	140192_Site Plan_Site Boundary [File ref: MGLA250319-8616 Part 2]
	181109 Gurnell Leisure Centre Crib Sheet [File ref: MGLA250319-8616 Part 2]
	Accommodation Schedule [File ref: MGLA250319-8616 Part 2]
	Block Level Architectural Drawing Pack [File ref: MGLA250319-8616 Part 3]
	copy_of_gla_carbon_emission_reporting_spreadsheet_v1.1 [File ref: MGLA250319-8616 Part 5]
	Delivery & Servicing Plan [File ref: MGLA250319-8616 Part 6]
	Design and Access Statement [File ref: MGLA250319-8616 Part 7]
	Energy Assessment [File ref: MGLA250319-8616 Part 2]
	Landscaping Drawing Pack [File ref: MGLA250319-8616 Part 8]
	Residential Travel Plan [File ref: MGLA250319-8616 Part 2]
	Sitewide Architectural Drawing Pack [File ref: MGLA250319-8616 Part 3]
	Sustainability Statement [File ref: MGLA250319-8616 Part 2]
	Transport Assessment [File ref: MGLA250319-8616 Part 9]

Please note that some names of members of staff are exempt from disclosure under Regulation 13 (Personal information) of the EIR. This information could potentially identify specific employees and as such constitutes as personal data which is defined by Article 4(1) of the General Data Protection Regulation (GDPR) to mean any information relating to an identified or identifiable living individual. It is considered that disclosure of this information would contravene the first data protection principle under Article 5(1) of GDPR which states that Personal data must be processed lawfully, fairly and in a transparent manner in relation to the data subject.

Due to the number and file size of attachments, these have been placed directly on to our disclosure log:

<https://www.london.gov.uk/about-us/governance-and-spending/sharing-our-information/freedom-information/foi-disclosure-log/eir-gurnell-leisure-centre-redevelopment>

If you have any further questions relating to this matter, please contact me, quoting the reference at the top of this letter.

Yours sincerely

Paul Robinson
Information Governance Officer

If you are unhappy with the way the GLA has handled your request, you may complain using the GLA's FOI complaints and internal review procedure, available at:

<https://www.london.gov.uk/about-us/governance-and-spending/sharing-our-information/freedom-information>

GURNELL LEISURE CENTRE

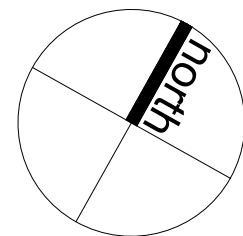
FULL PLANNING APPLICATION



PROPOSED LANDSCAPING DRAWINGS

DECEMBER 2018

Filepaths: c:\projects\2277\gurnell-leisure-centre\landscape\drawings\2277-hedmp-00-ga-l-1100.dwg, printed on: 2018-12-14 on iso full bleed a1 (841.00 x 594.00 mm) @ 100% of original scale



NOTES:
This drawing is the copyright of
Hyland Edger Driver. It must not be
copied or reproduced without
written consent. Only figured
dimensions are to be taken from
this drawing. All contractors must
visit the site and be responsible for
taking and checking all dimensions
related to the works shown on this
drawing.

SAFETY, HEALTH
AND ENVIRONMENT
INFORMATION
Unusual residual
hazards / risks, based
on experience and
competence working to
approved method
statements.

UNUSUAL RISKS
Construction:

Operations:

Maintenance:

Dismantling/Demolition:

0 10m 20m 50m
1:1000

REVISIONS

REVISIONS

REVISIONS

P01 2018-11-15 Stage 2 Issue
P02 2018-12-07 Issue fit for planning
P03 2018-12-14 Issue fit for planning

DRAWING NUMBER

REVISION

DATE
31/10/2018

DRAWING STATUS
Fit for Planning

PROJECT

DRAWING TITLE

1277-HED-MP-00-GA-L-1100

DRAWN BY
WZ

CHECKED BY
AG

SCALE @ A1
1:1000

REVISION

P03

CLIENT
Be

H E D Hyland Edger Driver
**Landscape Architects
& Urban Designers**
London & Winchester

One Wessex Way, Colden Common, Winchester SO21 1WG
Waterloo Court, 10 Theod Street, London SE1 8ST
1 01962 711 600
1 020 7603 9636

[illegible][illegible]

	P
	F
	F
	F
	F
	-
	-
	-
	-

[illegible]

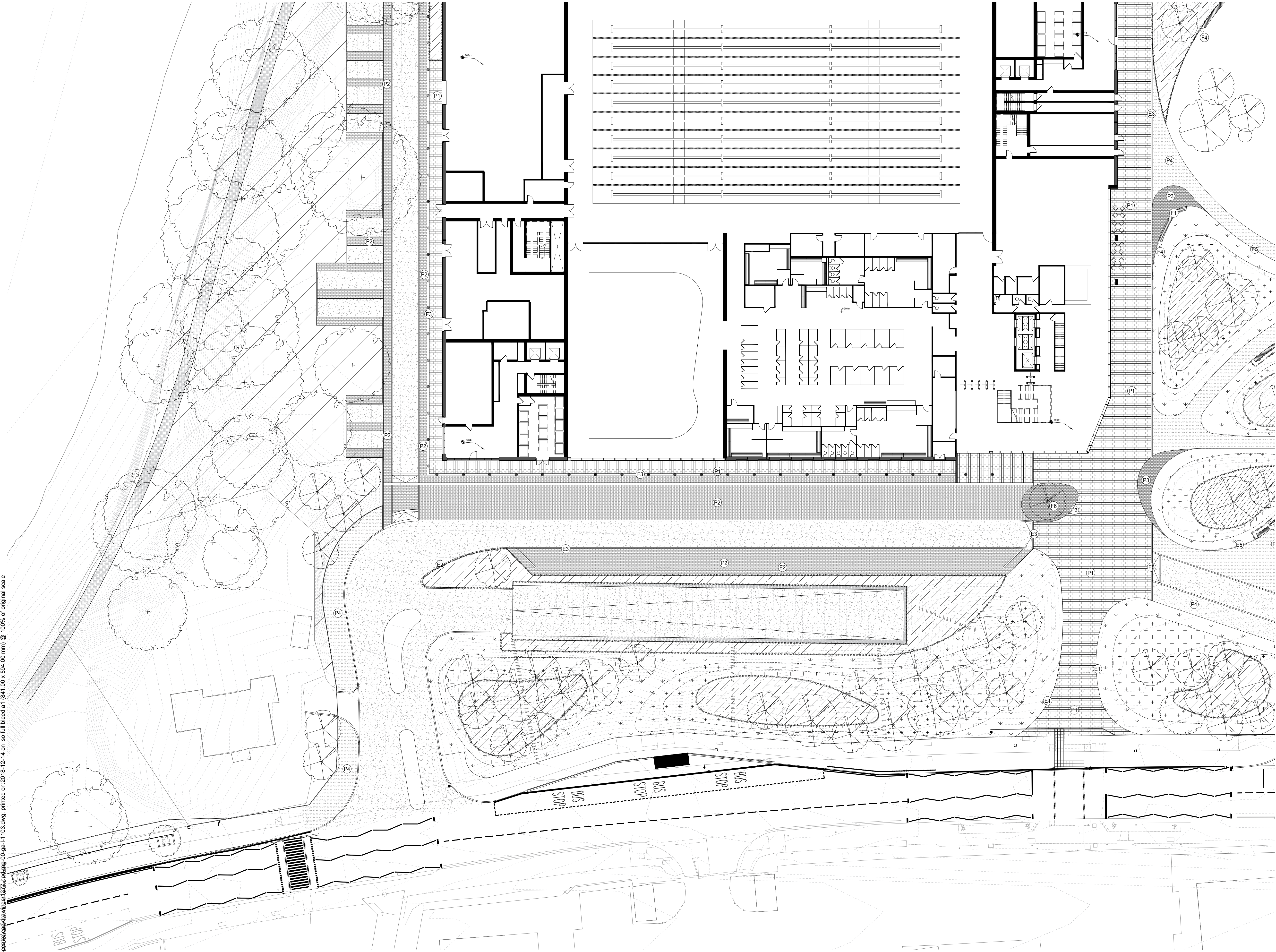
DRAWN BY WZ	CHECKED BY AG
SCALE @ A3 1:500	
Eco - Eco Park Life	
Key Plan	
REVISION	
A-L-1101	P03

D Hyland Edgar
Landscape Architects
& Urban Designers
London & Winchester

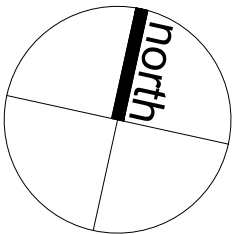
London Winchester SO21 1WG
t 01962 344444
e info@hyland-edgar.co.uk
w www.hyland-edgar.co.uk

river
fects
ners
ester

Filepaths: c:\projects\1277\gurnell leisure centre\landscape drawings\1277-hed-mp-00-ga-l-1103.dwg, printed on: 2018-12-14 on iso full bleed a1 (841.00 x 594.00 mm) @ 100% of original scale



- KEY
- PROPOSED GRASS
 - PROPOSED WILD FLOWER MEADOW
 - PROPOSED SWALE PLANTING
 - PROPOSED SHRUB PLANTING
 - PROPOSED LAWN
 - ENHANCED ECOLOGY AREA
 - EXISTING TREES
 - PROPOSED TREES
 - PROPOSED PAVING TYPE 1
Concrete conservation paving flag
300x600x80mm
 - PROPOSED PAVING TYPE 2
Concrete conservation paving block
100x200x80mm
 - PROPOSED PAVING TYPE 3
Concrete conservation paving setts
100x100x80mm
 - PROPOSED RESIN BONDED SURFACE
 - PROPOSED SELF-BINDING GRAVEL
 - MOWN PATH
 - TARMAC ROAD
 - PROPOSED ALUMINIUM EDGING
 - PROPOSED CONSERVATION KERB
125mm Upstand
145x255x915mm
 - PROPOSED CONSERVATION KERB
Flush
145x255x915mm
 - PROPOSED CONSERVATION KERB
50mm Upstand
145x255x915mm
 - PROPOSED STEEL PLANTER
400mm high
 - CURVE TIMBER SEATING
500mm width
 - TIMBER BENCH
500X3000mm
 - BOLLARDS
 - BIN
 - CYCLE STAND
 - TREE GRILLE



NOTES:
This drawing is the copyright of Hyland Edger Driver. It must not be copied or reproduced without written consent. Only figured dimensions are to be taken from this drawing. All contractors must visit the site and be responsible for taking and checking all dimensions related to the works shown on this drawing.

SAFETY, HEALTH AND ENVIRONMENT INFORMATION
Unusual residual hazards / risks, based on experience and competence working to approved method statements.

UNUSUAL RISKS
Construction:
Operations:
Maintenance:
Dismantling/Demolition:

1:250
0 2.5m 5m 10m

REVISIONS

REVISIONS

REVISIONS

P01 2018-11-15 Stage 2 Issue
P02 2018-12-07 Issue fit for planning
P03 2018-12-14 Issue fit for planning

DATE

12/11/2018

DRAWING STATUS

Fit for Planning

PROJECT

Gurnell Leisure Centre - Eco Park Life

DRAWING TITLE

General Arrangement Plan - Sheet 1

DRAWING NUMBER

1277-HED-MP-00-GA-L-1103

DRAWN BY

WZ

CHECKED BY

AG

SCALE @ A1

1:250

CLIENT

Be

H E D Hyland Edger Driver
Landscape Architects
& **Urban Designers**
London & Winchester

One Wessex Way, Colden Common, Winchester SO21 1WG
Waterloo Court, 10 Theod Street, London SE1 8ST
1 01962 711 600
1 020 7603 9636

Filepaths: c:\projects\1277\gurnellleisure\central\drawings\1277\hedmp-00-ga-l-1104.dwg, printed on 2018-12-14 on iso full bleed at 841.00 x 594.00 mm @ 100% of original scale



- KEY
- PROPOSED GRASS
 - PROPOSED WILD FLOWER MEADOW
 - PROPOSED SWALE PLANTING
 - PROPOSED SHRUB PLANTING
 - PROPOSED LAWN
 - ENHANCED ECOLOGY AREA
 - EXISTING TREES
 - PROPOSED TREES
 - PROPOSED PAVING TYPE 1
Concrete conservation paving flag
300x600x80mm
 - PROPOSED PAVING TYPE 2
Concrete conservation paving block
100x200x80mm
 - PROPOSED PAVING TYPE 3
Concrete conservation paving setts
100x100x80mm
 - PROPOSED RESIN BONDED SURFACE
 - PROPOSED SELF-BINDING GRAVEL
 - MOWN PATH
 - TARMAC ROAD
 - PROPOSED ALUMINIUM EDGING
 - PROPOSED CONSERVATION KERB
125mm Uprand
145x255x915mm
 - PROPOSED CONSERVATION KERB
Flush
145x255x915mm
 - PROPOSED CONSERVATION KERB
50mm Uprand
145x255x915mm
 - PROPOSED STEEL PLANTER
400mm high
 - CURVE TIMBER SEATING
500mm width
 - TIMBER BENCH
500x3000mm
 - BOLLARDS
 - BIN
 - CYCLE STAND
 - TREE GRILLE

NOTES:
This drawing is the copyright of Hyland Edger Driver. It must not be copied or reproduced without written consent. Only figured dimensions are to be taken from this drawing. All contractors must visit the site and be responsible for taking and checking all dimensions related to the works shown on this drawing.

SAFETY, HEALTH AND ENVIRONMENT INFORMATION
Unusual residual hazards / risks, based on experienced and competent contractors working to approved method statements.

UNUSUAL RISKS
Construction:
Operations:
Maintenance:
Dismantling/Demolition:

1:250
0 2.5m 5m 10m

REVISIONS
P01 2018-11-15 Stage 2 Issue
P02 2018-12-07 Issue fit for planning
P03 2018-12-14 Issue fit for planning

REVISIONS
P01 2018-11-15 Stage 2 Issue
P02 2018-12-07 Issue fit for planning
P03 2018-12-14 Issue fit for planning

REVISIONS
P01 2018-11-15 Stage 2 Issue
P02 2018-12-07 Issue fit for planning
P03 2018-12-14 Issue fit for planning

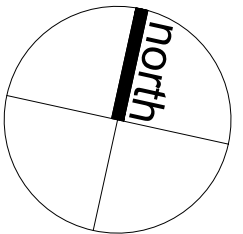
DATE 12/11/2018
DRAWING STATUS AG
PROJECT Fit for Planning
DRAWING TITLE Gurnell Leisure Centre - Eco Park Life
General Arrangement Plan - Sheet 2
DRAWING NUMBER 1277-HED-MP-00-GA-L-1104
REVISION P03

CLIENT Be
H E D
Hyland Edger Driver
Landscape Architects
& Urban Designers
London & Winchester
One Wessex Way Colden Common Winchester SO21 1WG
Waterloo Court 10 Theed Street London SE1 8ST
1 01962 711 600
1 020 7603 9636

Filepaths: c:\projects\1277\gurnell leisure centre\landscape\drawings\1277 hed hed 00 ga l 1105.dwg, printed on 2018-12-14 on iso full bleed at 1841.00 x 594.00 mm @ 100% of original scale



- KEY
- PROPOSED GRASS
 - PROPOSED WILD FLOWER MEADOW
 - PROPOSED SWALE PLANTING
 - PROPOSED SHRUB PLANTING
 - PROPOSED LAWN
 - ENHANCED ECOLOGY AREA
 - EXISTING TREES
 - PROPOSED TREES
 - PROPOSED PAVING TYPE 1
Concrete conservation paving flag
300x600x80mm
 - PROPOSED PAVING TYPE 2
Concrete conservation paving block
100x200x80mm
 - PROPOSED PAVING TYPE 3
Concrete conservation paving setts
100x100x80mm
 - PROPOSED RESIN BONDED SURFACE
 - PROPOSED SELF-BINDING GRAVEL
 - MOWN PATH
 - TARMAC ROAD
 - PROPOSED ALUMINIUM EDGING
 - PROPOSED CONSERVATION KERB
125mm Upstand
145x255x915mm
 - PROPOSED CONSERVATION KERB
Flush
145x255x915mm
 - PROPOSED CONSERVATION KERB
50mm Upstand
145x255x915mm
 - PROPOSED STEEL PLANTER
400mm high
 - CURVE TIMBER SEATING
500mm width
 - TIMBER BENCH
500X3000mm
 - BOLLARDS
 - BIN
 - CYCLE STAND
 - TREE GRILLE



NOTES:
This drawing is the copyright of
Hyland Edgar Driver. It must not be
copied or reproduced without
written consent. Only figures
dimensions are to be taken from
this drawing. All contractors must
visit the site and be responsible for
taking and checking all dimensions
related to the works shown on this
drawing.

SAFETY, HEALTH
AND ENVIRONMENT
INFORMATION
Unusual residual
hazards / risks, based
on experience and
competence working to
approved method
statements.

UNUSUAL RISKS
Construction:
Operations:
Maintenance:
Dismantling/Demolition:

0 2.5m 5m 10m
1:250

REVISIONS

REVISIONS

REVISIONS

DATE
12/11/2018
DRAWING STATUS
Fit for Planning
PROJECT
Gurnell Leisure Centre - Eco Park Life
DRAWING TITLE
General Arrangement Plan - Sheet 3
DRAWING NUMBER
1277-HED-MP-00-GA-L-1105

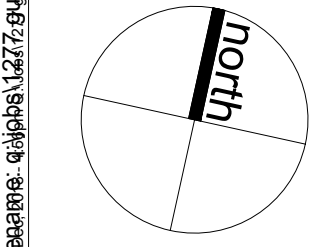
DRAWN BY
WZ

CHECKED BY
AG
SCALE @ A1
1:250

CLIENT
Be

H E D
Hyland Edgar Driver
Landscape Architects
& Urban Designers
London & Winchester
One Wessex Way, Colden Common, Winchester SO21 1WG
Waterloo Court, 10 Theod Street, London SE1 8ST
1 01962 711 600
1 020 7603 9636

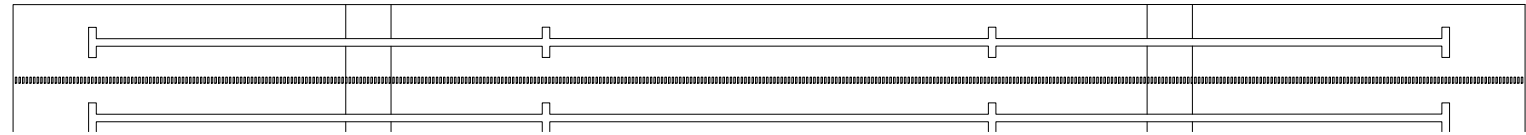
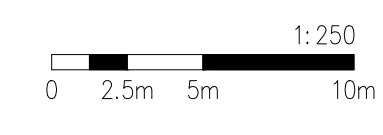
Filepaths: c:\projects\1277\gurnell leisure\central\landscape\drawing\1277-hedmp-00-ga-l-1106.dwg, printed on: 2018-12-14 on iso full bleed a1 (841.00 x 594.00 mm) @ 100% of original scale



NOTES:
This drawing is the copyright of Hyland Edger Driver. It must not be copied or reproduced without written consent. Only figured dimensions are to be taken from this drawing. All contractors must visit the site and be responsible for taking and checking all dimensions related to the works shown on this drawing.

SAFETY, HEALTH AND ENVIRONMENT INFORMATION
Unusual residual hazards / risks, based on expertised and completed working to approved method statements.

UNUSUAL RISKS	
Construction:	
Operations:	
Maintenance:	
Dismantling/Demolition:	



REVISIONS

REVISIONS

REVISIONS
P01 2018-11-15 Stage 2 Issue
P02 2018-12-07 Issue fit for planning
P03 2018-12-14 Issue fit for planning

DATE 12/11/2018	DRAWN BY WZ	CHECKED BY AG
DRAWING STATUS Fit for Planning	PROJECT Gurnell Leisure Centre - Eco Park Life	SCALE @ A1 1:250
DRAWING TITLE General Arrangement Plan - Sheet 4		
DRAWING NUMBER 1277-HED-MP-00-GA-L-1106	REVISION P03	

CLIENT
Be

H

E

D

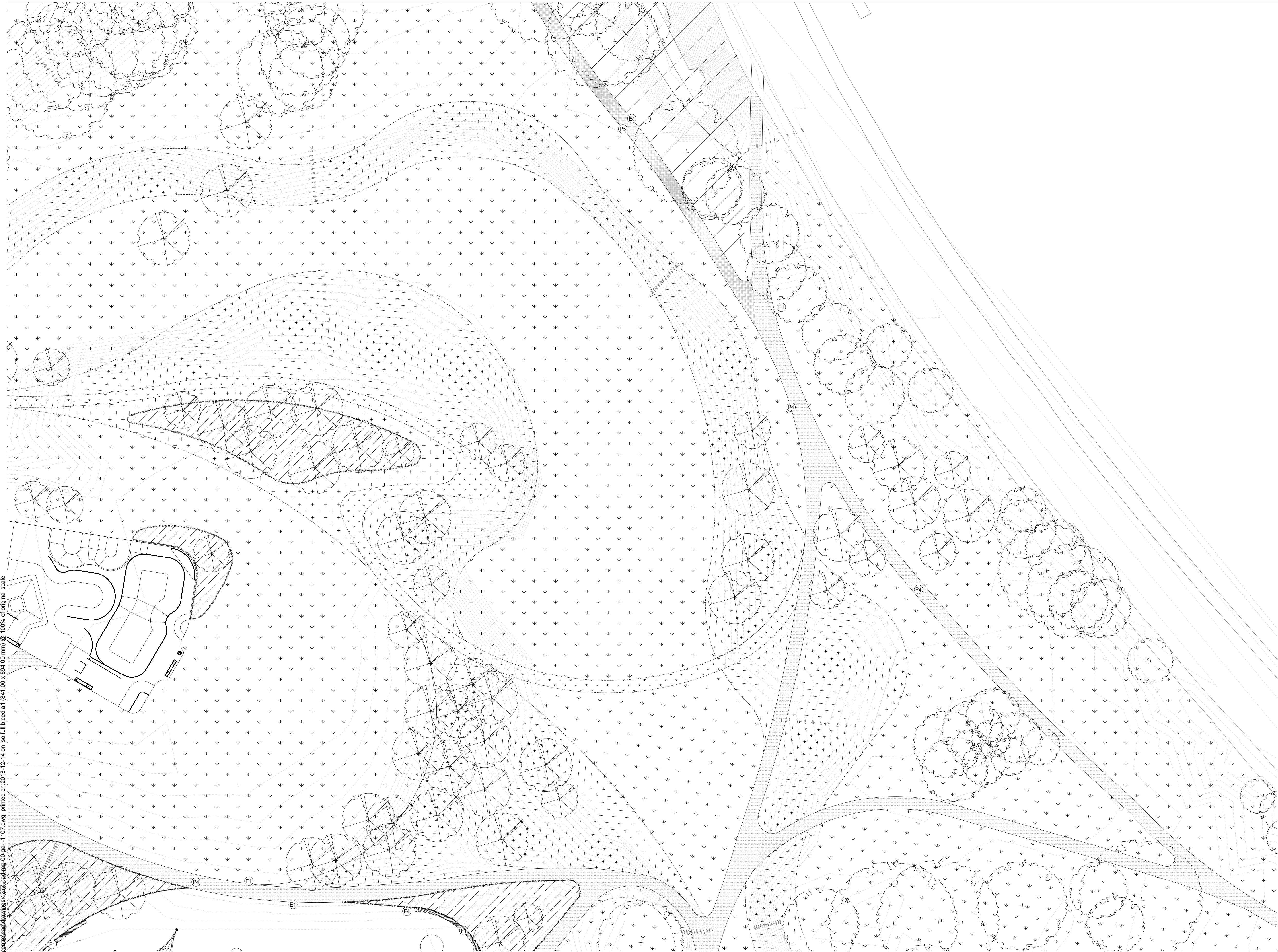
Hyland Edger Driver
Landscape Architects
& Urban Designers
London & Winchester

One Wessex Way, Colden Common, Winchester SO21 1WG
Watlington Court, 10 Theod Street, London, SE1 8ST

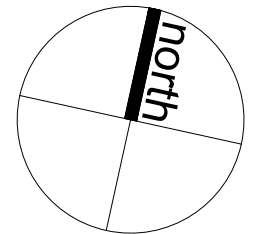
1 01962 711 600
1 020 7603 9636

- KEY
- PROPOSED GRASS
- PROPOSED WILD FLOWER MEADOW
- PROPOSED SWALE PLANTING
- PROPOSED SHRUB PLANTING
- PROPOSED LAWN
- ENHANCED ECOLOGY AREA
- EXISTING TREES
- PROPOSED TREES
- PROPOSED PAVING TYPE 1
Concrete conservation paving flag
300x600x80mm
- PROPOSED PAVING TYPE 2
Concrete conservation paving block
100x200x80mm
- PROPOSED PAVING TYPE 3
Concrete conservation paving setts
100x100x80mm
- PROPOSED RESIN BONDED SURFACE
- PROPOSED SELF-BINDING GRAVEL
- MOWN PATH
- TARMAC ROAD
- PROPOSED ALUMINIUM EDGING
- PROPOSED CONSERVATION KERB
125mm Upstand
145x255x915mm
- PROPOSED CONSERVATION KERB
Flush
145x255x915mm
- PROPOSED CONSERVATION KERB
50mm Upstand
145x255x915mm
- PROPOSED STEEL PLANTER
400mm high
- CURVE TIMBER SEATING
500mm width
- TIMBER BENCH
500X3000mm
- BOLLARDS
- BIN
- CYCLE STAND
- TREE GRILLE

Filepaths: c:\projects\1277\Gurnell Leisure Centre\landscape\drawing\1277-hed-mp-00-ga-l-1107.dwg, printed on: 2018-12-14 on iso full bleed a1 (841.00 x 594.00 mm) @ 100% of original scale



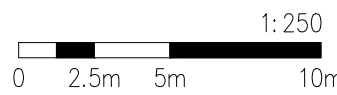
- KEY
- PROPOSED GRASS
 - PROPOSED WILD FLOWER MEADOW
 - PROPOSED SWALE PLANTING
 - PROPOSED SHRUB PLANTING
 - PROPOSED LAWN
 - ENHANCED ECOLOGY AREA
 - EXISTING TREES
 - PROPOSED TREES
 - PROPOSED PAVING TYPE 1
Concrete conservation paving flag
300x600x80mm
 - PROPOSED PAVING TYPE 2
Concrete conservation paving block
100x200x80mm
 - PROPOSED PAVING TYPE 3
Concrete conservation paving sets
100x100x80mm
 - PROPOSED RESIN BONDED SURFACE
 - PROPOSED SELF-BINDING GRAVEL
 - MOWN PATH
 - TARMAC ROAD
 - PROPOSED ALUMINIUM EDGING
 - PROPOSED CONSERVATION KERB
125mm Upstand
145x255x915mm
 - PROPOSED CONSERVATION KERB
Flush
145x255x915mm
 - PROPOSED CONSERVATION KERB
50mm Upstand
145x255x915mm
 - PROPOSED STEEL PLANTER
400mm high
 - CURVE TIMBER SEATING
500mm width
 - TIMBER BENCH
500x3000mm
 - BOLLARDS
 - BIN
 - CYCLE STAND
 - TREE GRILLE



NOTES:
This drawing is the copyright of Hyland Edger Driver. It must not be copied or reproduced without written consent. Only figures and dimensions are to be taken from this drawing. All contractors must visit the site and be responsible for taking and checking all dimensions related to the works shown on this drawing.

SAFETY, HEALTH AND ENVIRONMENT INFORMATION
Unusual residual hazards / risks, based on experienced and competent contractors working to approved method statements.

UNUSUAL RISKS
Construction:
Operations:
Maintenance:
Dismantling/Demolition:



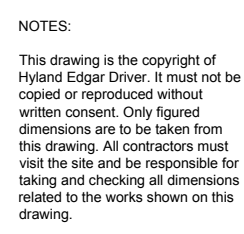
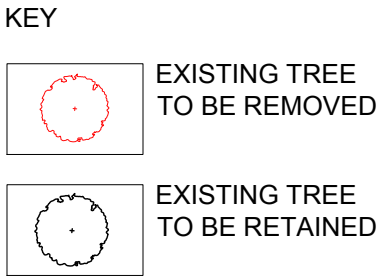
REVISIONS

REVISIONS

REVISIONS
P01 2018-11-15 Stage 2 Issue
P02 2018-12-07 Issue fit for planning
P03 2018-12-14 Issue fit for planning

DATE 12/11/2018	DRAWN BY WZ	CHECKED BY AG
DRAWING STATUS Fit for Planning		SCALE @ A1 1:250
PROJECT Gurnell Leisure Centre - Eco Park Life		
DRAWING TITLE General Arrangement Plan - Sheet 5		
DRAWING NUMBER 1277-HED-MP-00-GA-L-1107	REVISION P03	

CLIENT Be	H E D Hyland Edger Driver Landscape Architects & Urban Designers London & Winchester
One Wessex Way, Colden Common, Winchester SO21 1WG Waterloo Court, 10 Theod Street, London SE1 8ST	1 01962 711 600 1 020 7603 9636



Revisions

REVISIONS

P01 2018-11-15 Stage 2 Issue
P02 2018-12-07 Issue fit for planning
P03 2018-12-14 Issue fit for planning

DATE 12/11/2018	DRAWN BY WZ	CHECKED BY AG
DRAWING STATUS Fit for Planning	SCALE (A) A2 1:250	
PROJECT Gurnell Leisure Centre - Eco Park Life		
DRAWING TITLE Tree Retained and Removal Plan		
DRAWING NUMBER 1277-HED-MP-00-GA-L-1400	REVISION P03	

CLIENT
Be

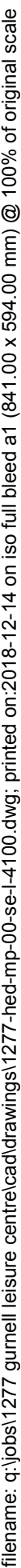
H | E | D

Hyland Edgar Driver
**Landscape Architects
& Urban Designers**
London & Winchester

One Winton Way, Colden Common, Winchester, SO21 1WQ
Watsoot Court, 10 Theod Street, London, SE1 6ST

t. 01962 711 600
f. 020 7922 9639

Filename: q:\jobs\1277 gurnell leisure centre\lead drawings\1277-hed-mp-00-ga-1-1400.dwg, printed on: 2018-12-14 on iso full bleed a0 (841.00 x 1189.00 mm) @ 100% of original scale



CLIENT
Be

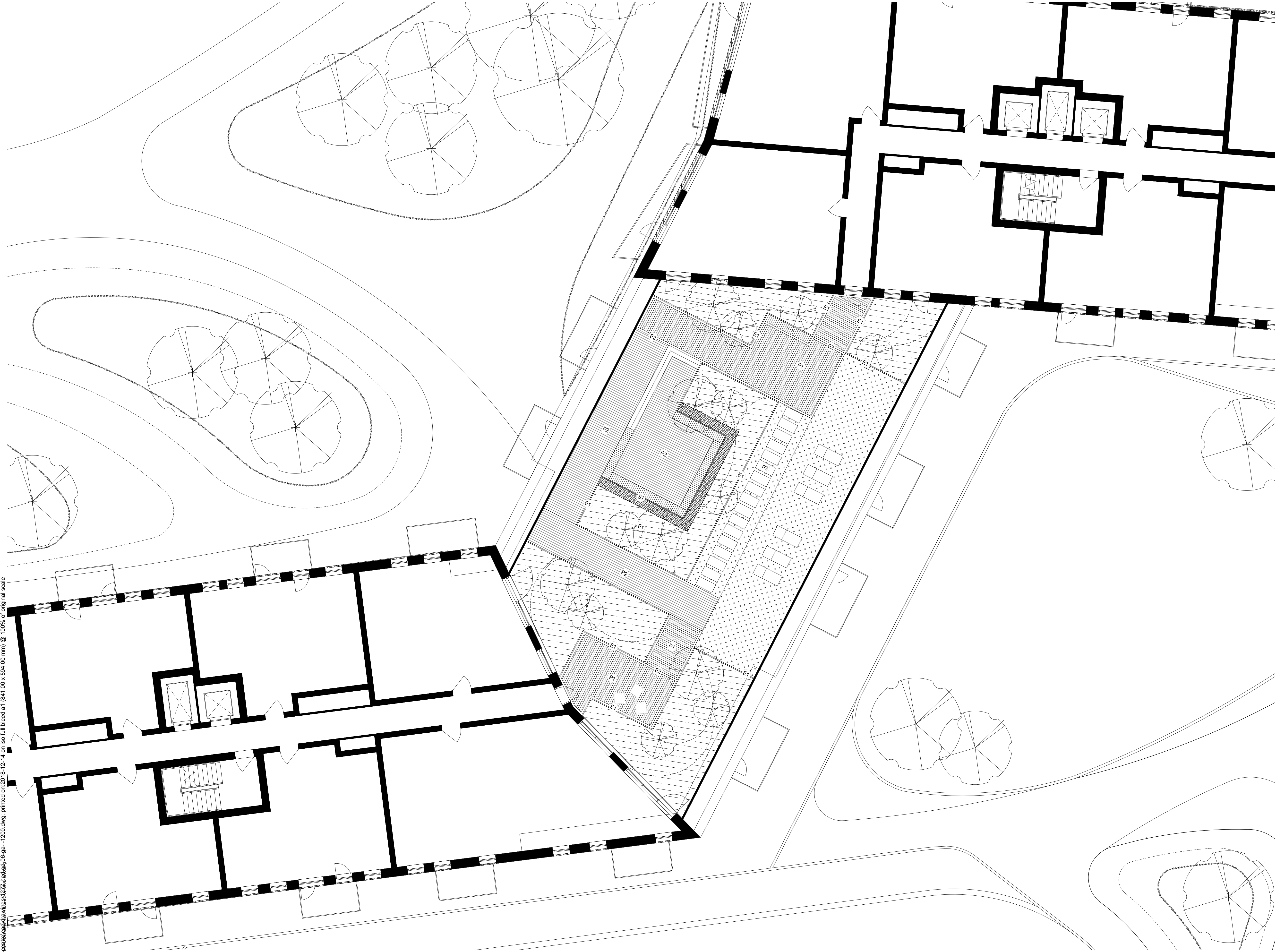
H | E | D

Hyland Edgar Driver
**Landscape Architects
& Urban Designers**
London & Winchester

One Wessex Way, Golden Common, Winchester, SO21 1WG
Waterloo Court, 10 Theed Street, London, SE1 8ST

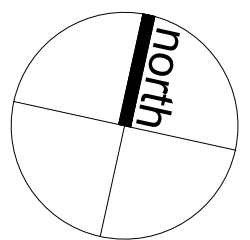
t. 01962 711 600
t. 020 7803 9636

Filepaths: c:\projects\1277-gurnell-leisure-centre\hedgecd\drawings\1277-hedgecd-06-ga-l-1200.dwg, printed on 2018-12-14 on iso full bleed at 1 (841.00 x 594.00 mm) @ 100% of original scale



KEY

- ARTIFICIAL TURF
- HERBACEOUS/ SHRUB PLANTING
- HEDGE
- CONSERVATION BLOCK PAVING
100X200mm
Mix of 2 tone of grey
- TIMBER DECK
- CONSERVATION STEPPING STONES
500x1000mm
- BENCH
- SEATING BLOCKS
- TIMBER LOUNGER
- SPECIMEN TREE
- RAISED STEEL PLANTER
- CONSERVATION EDGE
125x915x150mm
- TIMBER SCREEN
1.5m high



NOTES:
This drawing is the copyright of
Hyland Edger Driver. It must not be
copied or reproduced without
written consent. Only figured
dimensions are to be taken from
this drawing. All contractors must
visit the site and be responsible for
taking and checking all dimensions
related to the works shown on this
drawing.

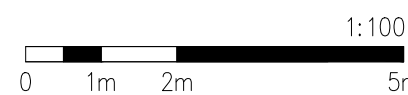
SAFETY, HEALTH
AND ENVIRONMENT
INFORMATION
Unusual residual
hazards / risks, based
on experience and
competence working to
approved method
statements.

UNUSUAL RISKS
Construction:

Operations:

Maintenance:

Dismantling/Demolition:



REVISIONS

REVISIONS

REVISIONS

P01 05/11/2018 Stage 2 Issue
P02 2018-12-07 Issue fit for planning
P03 2018-12-14 Issue fit for planning

DATE 02/11/2018	DRAWN BY WZ	CHECKED BY AG
DRAWING STATUS Fit for Planning		SCALE @ A1 1:100
PROJECT Gurnell Leisure Centre - Eco Park Life		
DRAWING TITLE Level 06 Roof Plan		
DRAWING NUMBER 1277-HED-CD-06-GA-L-1200	REVISION P03	

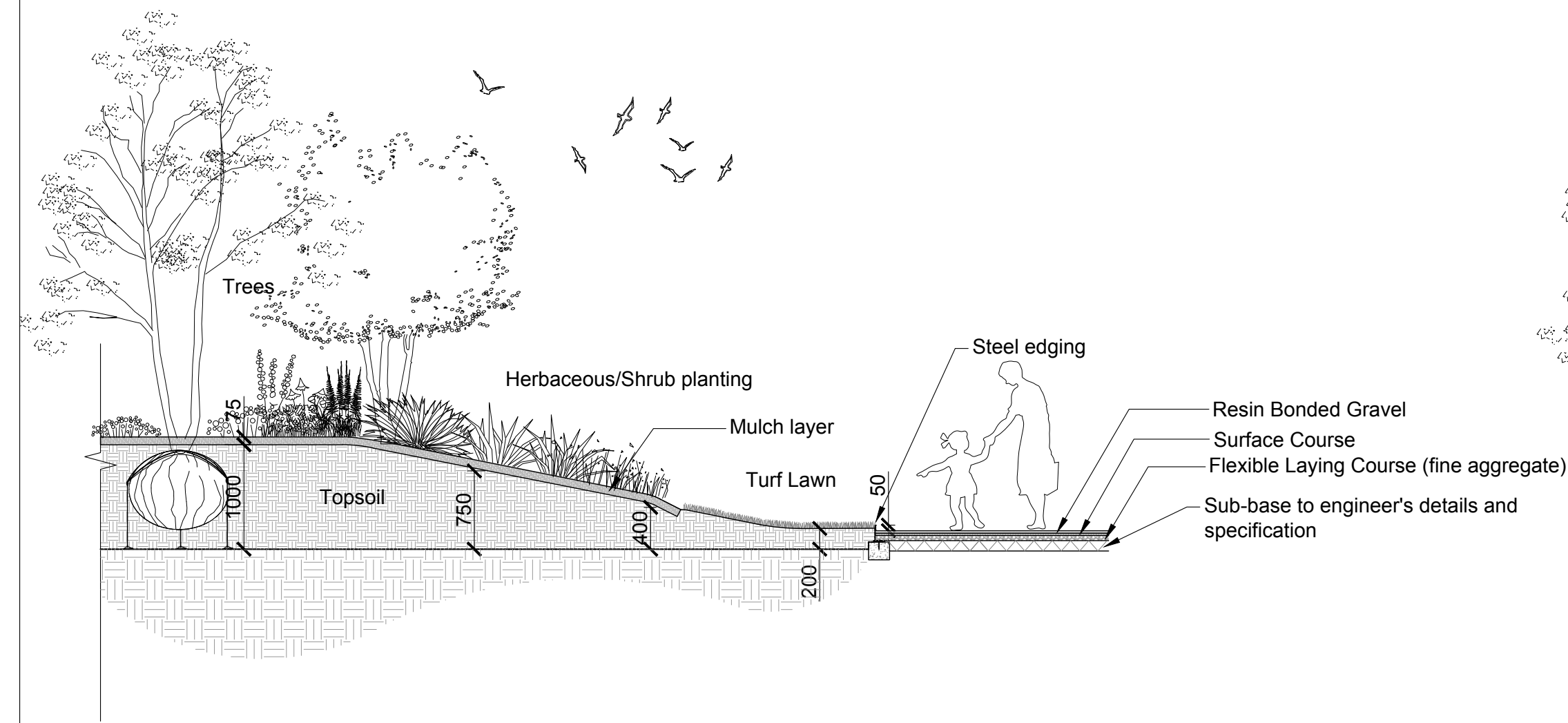
CLIENT
Be

H E D Hyland Edger Driver
**Landscape Architects
& Urban Designers**
London & Winchester

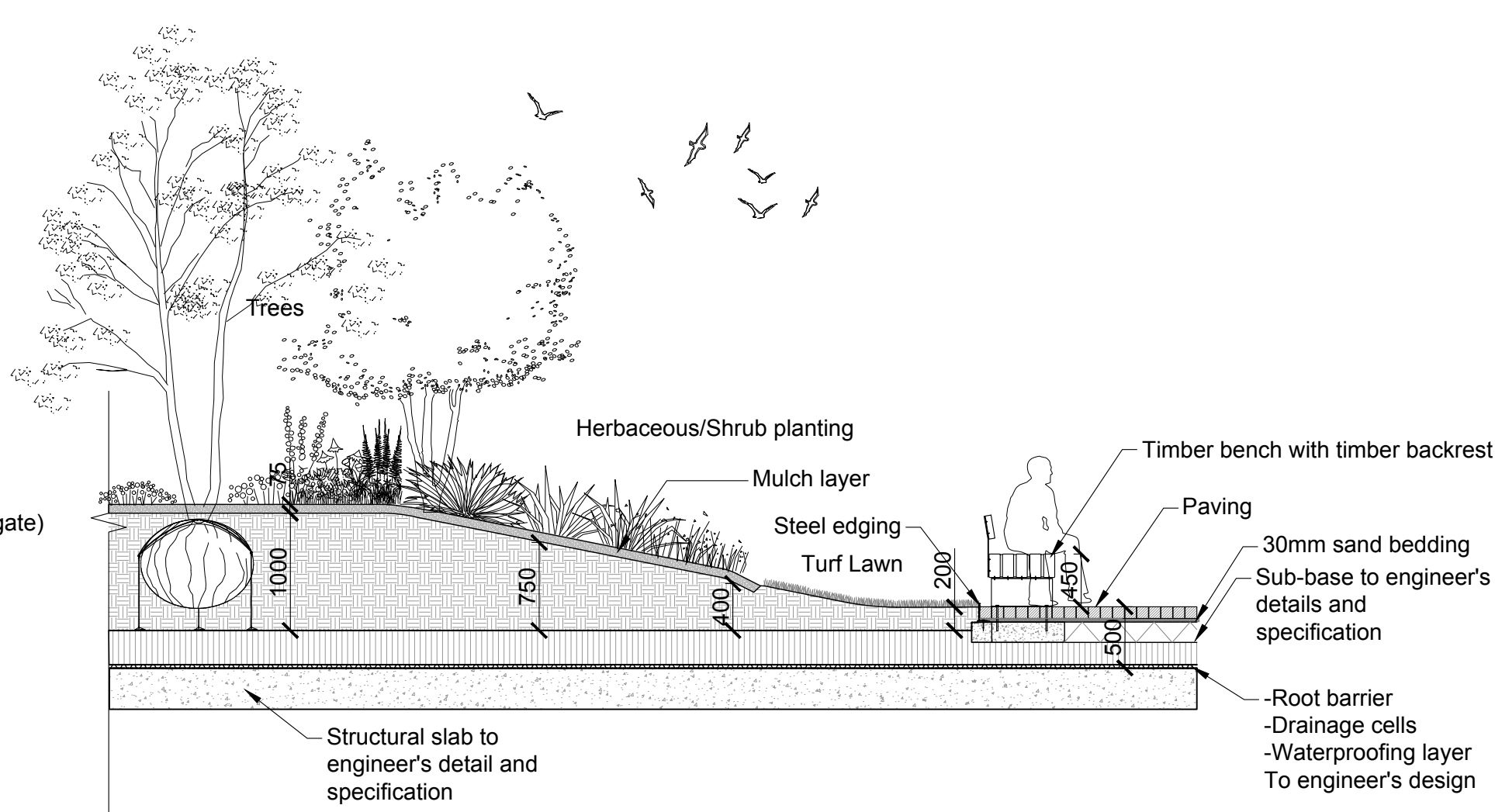
One Wessex Way, Colden Common, Winchester SO21 1WG
Waterloo Court, 10 Theod Street, London, SE1 8ST

1.01962 711 600
1.020 7603 9636

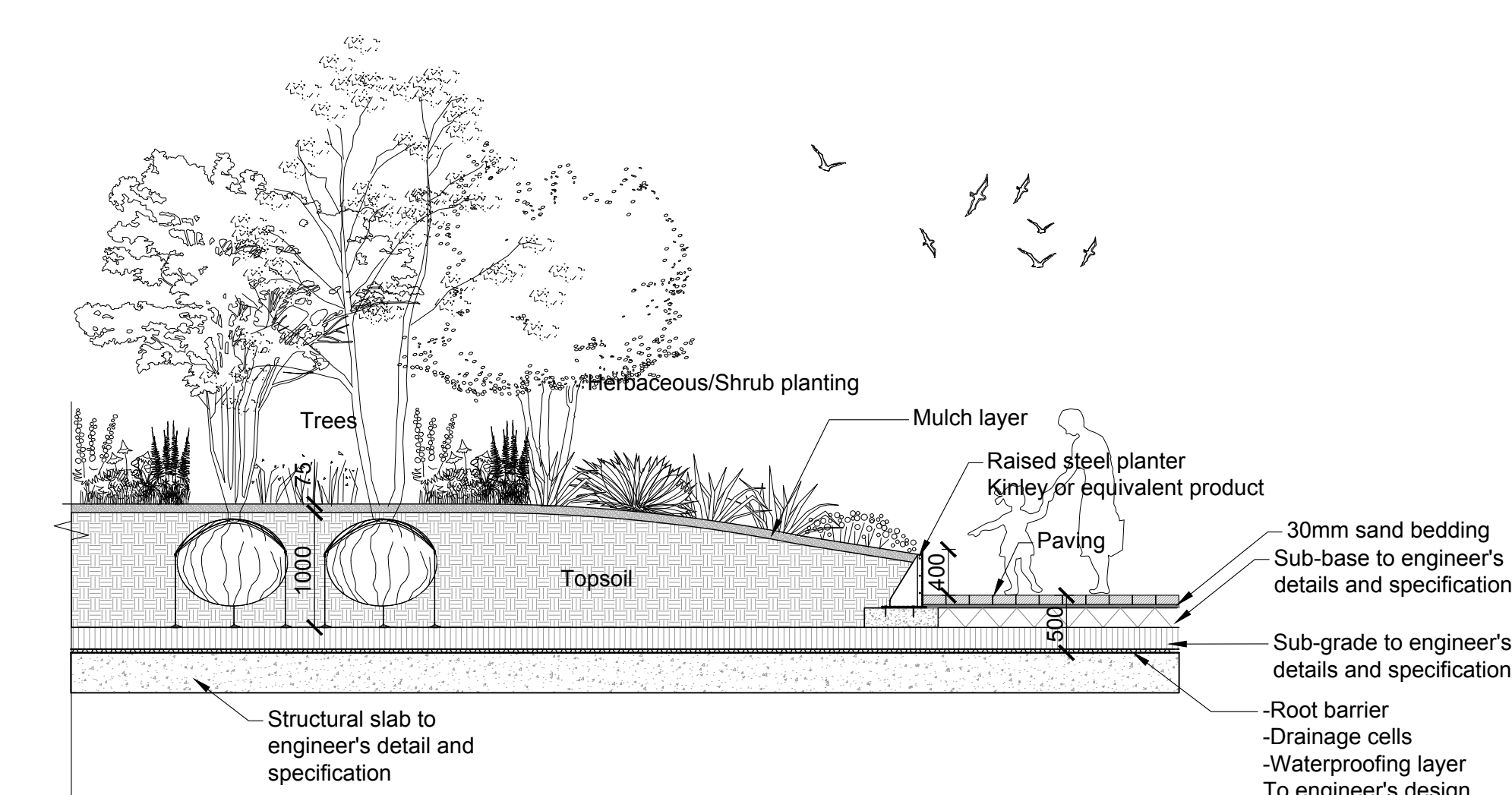
filename: c:\j\jost\1277 Gurnell Leisure Centre\drawings\1277-hed-mp-00-se-l-4101.dwg, printed on: 2018-12-14 on iso full bleed at (841.00 x 594.00 mm) @ 100% of original scale



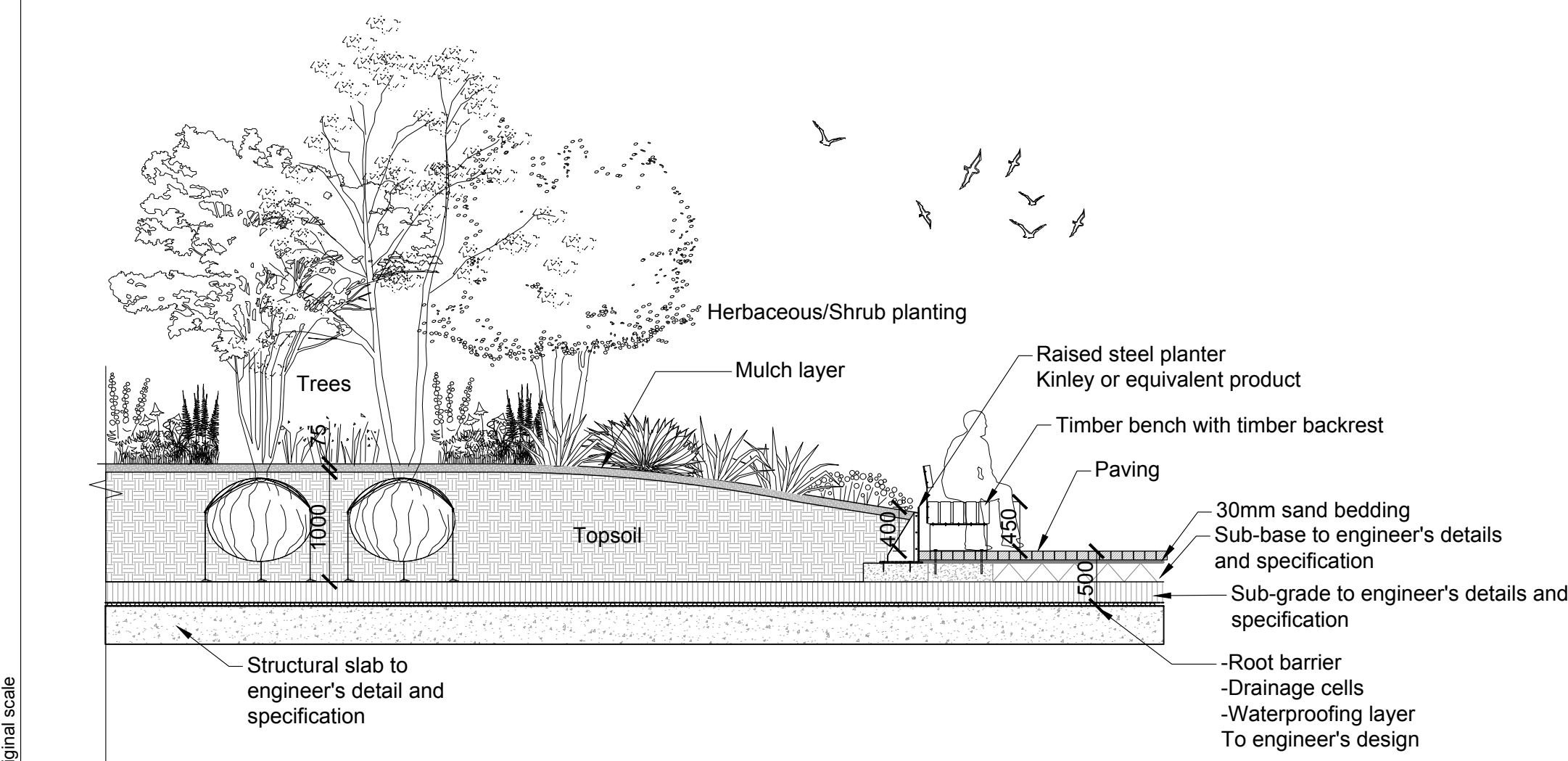
1 Typical Section - Planting Area
1:50



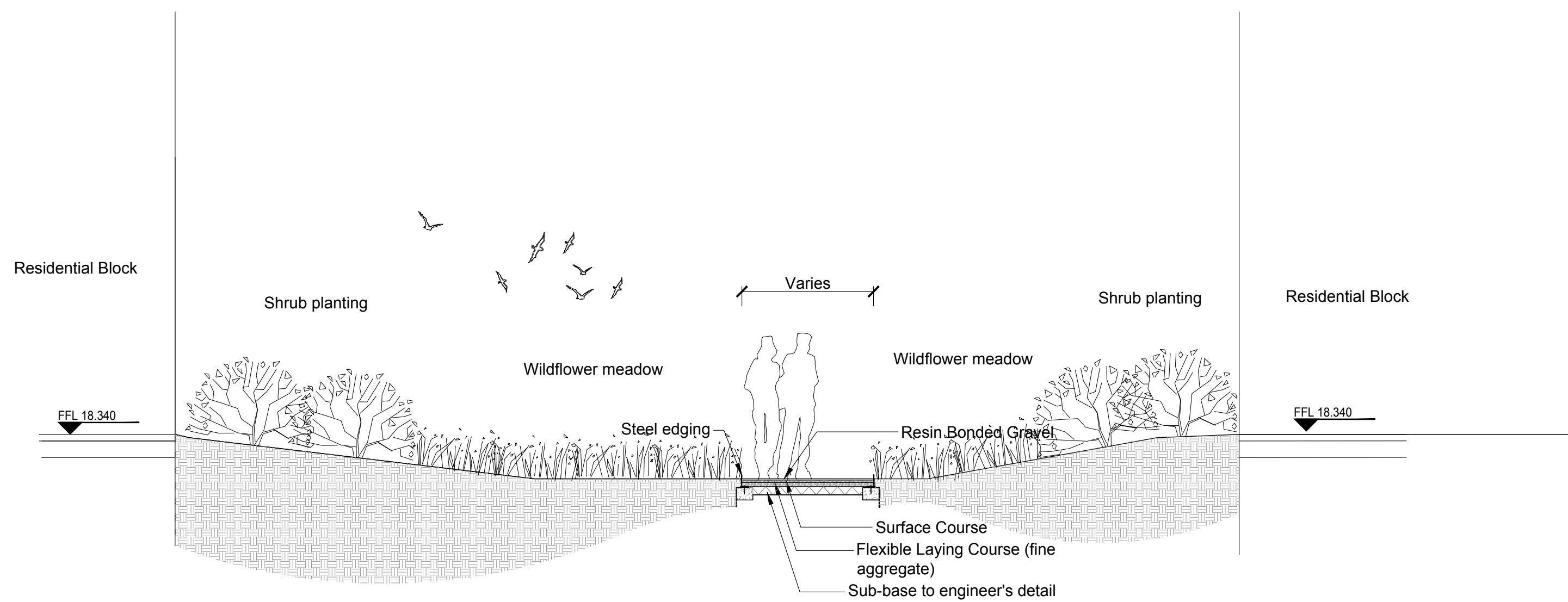
2 Typical Section - Planting Area with Seating Over Basement
1:50



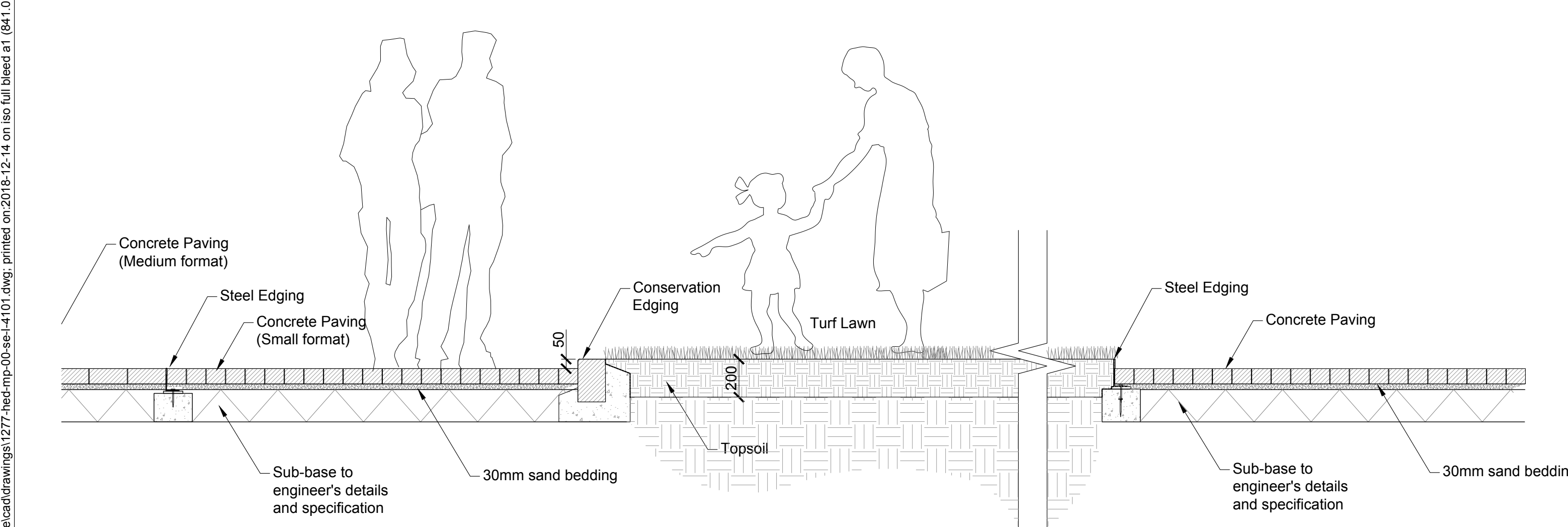
3 Typical Section - Raised Planter Over Basement
1:50



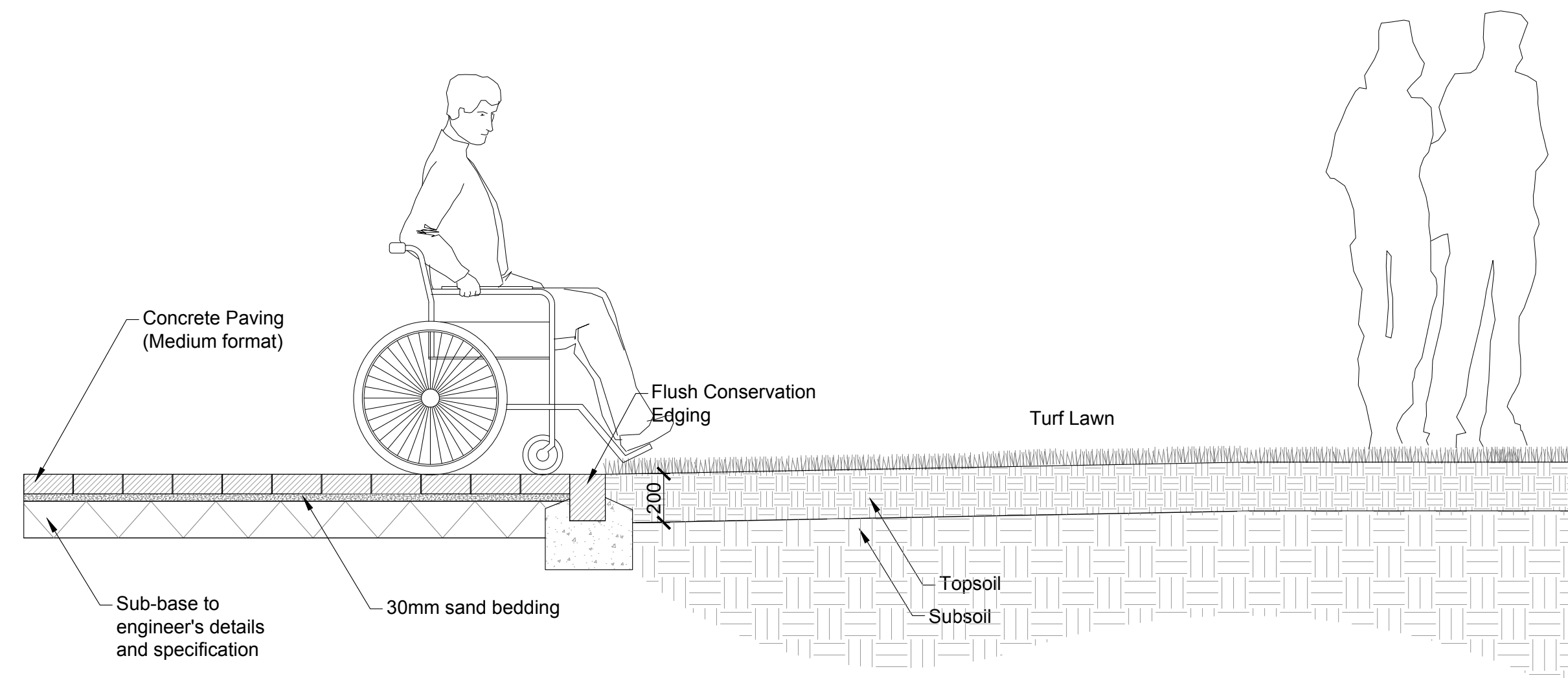
4 Typical Section - Raised Planter with Seating Over Basement
1:50



5 Typical Section - Resin Bonded Path
1:50



6 Typical Section - Lawn Area with Raised Edge
1:20



7 Typical Section - Lawn Area with Accessible Flush Edge
1:20

NOTES:
This drawing is the copyright of
Hyland Edgar Driver. It must not be
copied or reproduced without
written consent. Only figured
dimensions are to be taken from
this drawing. All contractors must
visit the site and be responsible for
taking and checking all dimensions
related to the works shown on this
drawing.

SAFETY, HEALTH
AND ENVIRONMENT
INFORMATION
Unusual residual
hazards / risks, based
on experience and
competence, working to
approved method
statements.

UNUSUAL RISKS
Construction:
Operations:
Maintenance:
Dismantling/Demolition:

REVISIONS
P01 31/10/2018 Stage 2 Issue
P02 2018-12-07 Issue fit for planning

REVISIONS
P01 31/10/2018 Stage 2 Issue
P02 2018-12-07 Issue fit for planning

REVISIONS
P01 31/10/2018 Stage 2 Issue
P02 2018-12-07 Issue fit for planning

DATE
31/10/2018
DRAWING STATUS
Fit for Planning
PROJECT
Gurnell Leisure Centre - Eco Park Life
DRAWING TITLE
Typical Section (Street Level)
DRAWING NUMBER
1277-HED-MP-00-SE-L-4101
DRAWN BY
WZ
CHECKED BY
AG
SCALE @ A1
As Shown
REVISION
P02

CLIENT
Be
H E D
Hyland Edgar Driver
Landscape Architects
& Urban Designers
London & Winchester
One Wessex Way, Colden Common, Winchester SO21 1WG
Waterloo Court, 10 Theed Street, London SE1 8ST
1.01962 711 600
1.020 7603 9636