

Working Paper 79

Trends in the demand for labour and skills in London and the East Sub-region

Joel Marsden and Hadyn Hitchins

May 2016



copyright

Greater London Authority
May 2016

Published by

Greater London Authority
City Hall
The Queens Walk
London SE1 2AA

www.london.gov.uk

Tel 020 7983 4922

Minicom 020 7983 4000

ISBN 978-1-84781-625-2

Cover photograph

© London on View

For more information about this publication, please contact:

GLA Economics

Tel 020 7983 4922

Email glaeconomics@london.gov.uk

GLA Economics provides expert advice and analysis on London's economy and the economic issues facing the capital. Data and analysis from GLA Economics form a basis for the policy and investment decisions facing the Mayor of London and the GLA group. GLA Economics uses a wide range of information and data sourced from third party suppliers within its analysis and reports. GLA Economics cannot be held responsible for the accuracy or timeliness of this information and data. The GLA will not be liable for any losses suffered or liabilities incurred by a party as a result of that party relying in any way on the information contained in this report.

Contents

Executive Summary	2
Introduction	4
1 Overview of Area Based Reviews.....	5
2 Trends in the London and East Sub-regional Labour Market	7
3 Short-term Economic Forecasts and Labour Market Projections	47
4 Supply of learners	57

Executive Summary

This report is aimed at assisting the London area based reviews of the Further Education (FE) sector, by providing a range of data and analysis on the current and future trends of the labour market in London and the East sub-region. A separate report will be produced for each of the other three sub-regions.

An important aspect of these reports is that the analysis has been completed at an appropriate level of detail, given the limitations of the data sources that are available. This means that the analysis focuses, insofar as possible, on the long-run trends in the demand for an industry's products and services in the first instance, before turning to investigate the revealed patterns of demand for jobs and skills that follow. This demand-led approach to the analysis means looking at jobs in workplaces across London, regardless of whether they are held by London residents. In so doing, it seeks to highlight areas of economic activity in which large numbers of people are employed relative to the rest of the country or region, and areas where there have been, or there are expected to be, significant changes in employment over time.

In particular, this report outlines the following trends:

- Over the past 30 years, London has become increasingly connected to the global economy. As a result, it has specialised in what might be considered 'high value business services': finance and insurance, real estate, professional and technical service activities, and information and communication sectors. In contrast, there has been a significant decline in manufacturing.
- Many of these specialised activities have grouped together in specific areas of London, and means that some areas (particularly central London) have relatively high levels of employment compared to the London average. Reflecting the higher demand for specialist skills, the jobs within these specialisations generally have higher annual pay compared to the London average. The higher earnings prospects, together with high levels of transport connectivity, mean that employers can draw on a broad pool of labour. Generally less than half of London's workforce works in the same sub-region they live in.
- The concentration of specialised activities – and the inflows of people and workers it attracts – also generates demand for further economic activities in other parts of London and the rest of the UK. In addition, London's growing population generates a demand for localised services (such as education, healthcare, retail and other customer services). These industries are likely to continue to grow in line with London's future population. A large proportion of the East sub-region's jobs are in these localised service industries, these sectors are therefore likely to be important sources of future jobs growth in this region.
- The November 2015 release of the GLA economic short-term forecasts predict that workforce jobs in London will increase by 1.2 per cent in 2016 and 0.7 per cent in 2017. This growth is forecast to be predominantly driven by increases in business and administration services, retail, wholesale, accommodation and food services, and construction.
- In the longer term, GLA Economics labour market projections suggest that total workforce jobs in London are likely to increase from 5.5 million in 2014 to 6.4 million in 2036, an annual average increase of 41,000 jobs per year (or 0.69 per cent per year over the period). Over the same period, the number of jobs in the East sub-region is projected to increase from 852,000 jobs in 2014 to 929,000 jobs in 2036, equivalent to an average increase of 3,500 jobs per year, or 0.39 per cent per year. The growth in the London labour market is projected to be underpinned by increases in professional, real estate, scientific and technical services, administrative and support services, accommodation and food services, and information and communication.

- As a result of the increasing specialisation as well as the increased demand for localised services, GLA Economics labour market projections suggest that there is likely to be a changing composition of jobs across occupations. Professionals, skilled trades, and managers, directors and senior officials are each projected to increase their share of total London employment from 2014 to 2036. This further shift towards more professional and senior roles is likely to be associated with increasing demand for higher level skills and qualifications. In 2014, 58 per cent of jobs in London (and 42 per cent of jobs in the East sub-region) were held by workers with higher education qualifications or above (NVQ4+), and is projected to rise to 68 per cent by 2036. Currently, 39 per cent of the working age resident population in the East sub-region holds higher education qualifications or above, this compares to 49 per cent for all London residents.
- The proportion of jobs in administrative and secretarial occupations, in contrast, is projected to decrease substantially (from 10.5% to 3.3% of total London jobs) from 2014 to 2036. This may present some challenges to the employment prospects of London's lower skilled labour force. In particular, this decrease in jobs in administrative and secretarial roles occurs at the same time as there is projected to be a large increase in elementary occupations in accommodation and food, and administrative and support services (which has seen recent growth in temporary roles).
- Even though the projections suggest there will be a high level of structural change in London's labour market in the future, GLA Economics estimate that more than half a million people leave their occupation each year, and projects that this will increase in the future. There is a potentially significant level of training and skills requirements associated with the need to replace those leaving their roles.

Overall this report provides an initial baseline for exploring the subsequent aspects of the area based reviews. These aspects include the exploration of local labour market intelligence at the borough level, and the supply side analysis of the education sector, which involves analysing different learner categories and levels of qualifications and achievement using data sourced from the government's Joint Area Review Delivery Unit (JARDU).

Introduction

The purpose of this report is to assist with the London area based reviews of the Further Education (FE) sector. It provides baseline information primarily on the demand for jobs and skills within the labour market to inform further analysis and research of the FE sector in the East sub-regional review area. This report is one of a series that will be produced for each of the sub-regional review areas. The report itself is divided into four sections:

1. A brief overview of the area reviews for the FE sector, and its link to economic needs within the London labour market.
2. Analysis and discussion of the long-term and recent trends in the labour market in London and the East sub-region review area.
3. An outline of the findings of economic forecasts and labour market projections produced by GLA Economics at the London and the sub-regional review area, and the assumptions that have been used to produce them.
4. In relation to the supply of learners and learning opportunities in London, which is the main focus of the subsequent stages of the FE sector review, an overview of the projected population in London and the East sub-regional review area is provided, along with details of the level of qualifications held by the working-age population of London and the sub-regional area. Together this information can serve as an indicator of the potential size of cohorts of learners over time. Key findings from the UKCES Employer Perspectives Survey are also presented in this section. Further analysis of the potential implications for learners and learner funding is beyond the scope of this economic analysis.

Appending the final report will be a spreadsheet which provides access to the underlying data used to produce the tables and figures in this report. Overall, this information will provide an up-to-date overview of London's labour market and the potential trends over the next decades, and provides context for more in-depth analysis of London's labour market and how it interrelates with the FE sector.

1 Overview of Area Based Reviews

The area based reviews process has been implemented by the government as an initial step to developing and establishing a fit-for-purpose FE sector. The concept is that a range of stakeholders with links to the FE sector will work together to redevelop it by: improving the quality and robustness of the FE institutions themselves, increasing the responsiveness to business demand, and ensuring there is a clear route to employment for learners. Achieving these aims will assist in ensuring that the FE sector is delivering skills that meet local economic needs¹.

The first phase of the review is to develop an understanding of what the economic needs are within the broad London economy, in particular what jobs and skills are currently required, and what jobs and skills might be needed in the future as the economy continues to develop and change. Sections 2 and 3 of this report describe labour market trends and projections for London and for the East sub-region, while section 4 provides an overview of the population projections and qualification levels, and analysis from the employer perspectives survey, which is more related to the supply of learning.

Together this information provides a basis for further analysis of the demand for skills and the role of the FE sector. The London boroughs included in the different sub-regional areas are shown in **Table 1** and **Map 1** below.

As stated previously this report focuses on the East sub-region. However, unlike the other sub-regional areas, the East sub-region includes a sub-area of South East London, which consists of Bexley, Bromley and Greenwich. Where possible, the relevant aspects of the South East sub-area will also be highlighted in this report. Full data tables and figures are included in the spreadsheets appending this report.

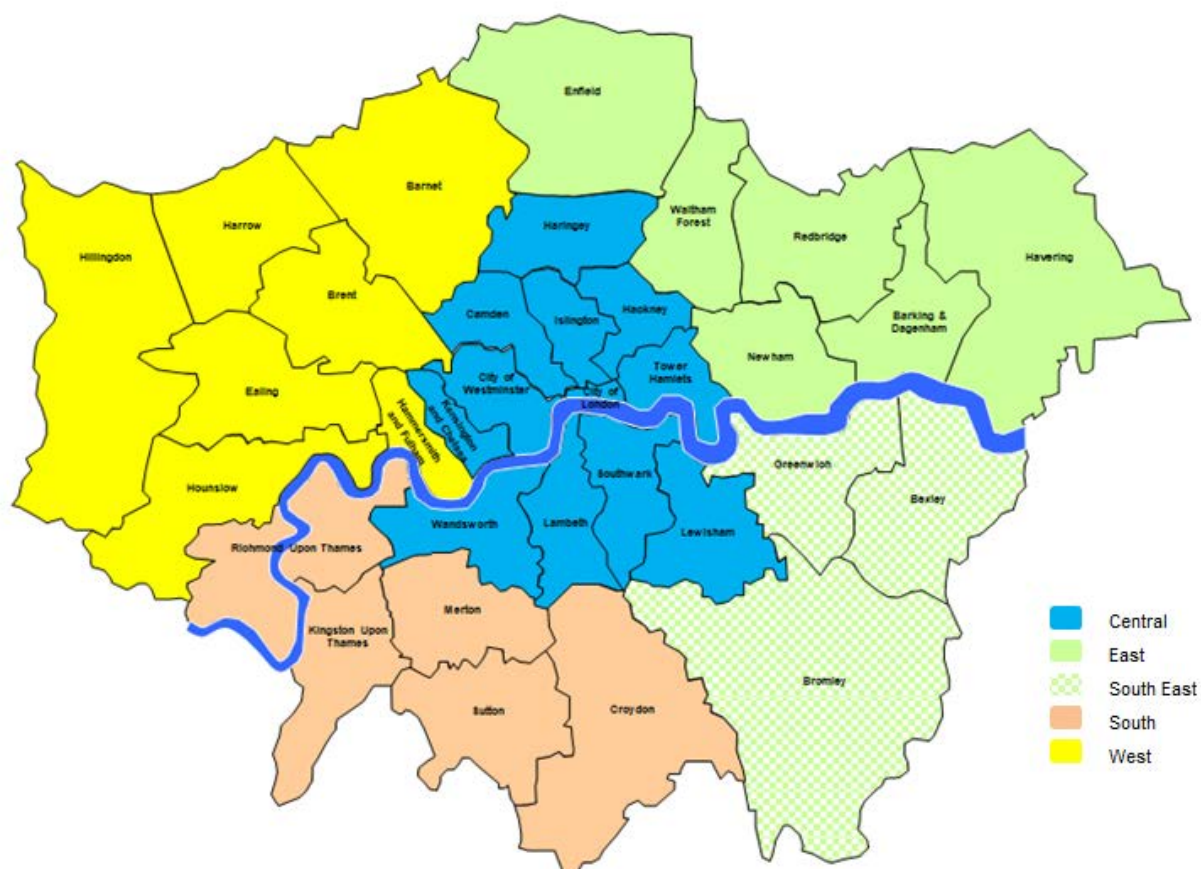
Table 1: Review area groupings of London boroughs

Review Areas			
Central	West	South	East*
Camden	Barnet	Croydon	Barking and Dagenham
City of London	Brent	Kingston upon Thames	<i>Bexley</i>
City of Westminster	Ealing	Merton	<i>Bromley</i>
Hackney	Hammersmith and Fulham	Richmond upon Thames	Enfield
Haringey	Harrow	Sutton	<i>Greenwich</i>
Islington	Hillingdon		Havering
Kensington and Chelsea	Hounslow		Newham
Lambeth			Redbridge
Lewisham			Waltham Forest
Southwark			
Tower Hamlets			
Wandsworth			

Source: London Further Education Review Steering Group. Notes: *The three boroughs in italics are located in South-East London, and will be analysed separately where there is an appropriate level of robust data available.

¹HM Treasury, [Reviewing post-16 education and training institutions: guidance on area reviews](#), September 2015, accessed on 12/01/16.

Map 1: Review area groupings of London boroughs



Source: London Further Education Review Steering Group

2 Trends in the London and East Sub-regional Labour Market

Summary - London

- London is a thriving global city with a strong, growing economy and increasing population. Particular industries in London have tended to group together into different parts of London; this trend is particularly strong in central areas. Recent analysis has shown that less than half of London's workforce works in the same sub-region they live in.
- The economic success of the capital has been driven by an increasingly connected and global economy, which has made it more economically viable to specialise. As a result, London's industrial structure has changed significantly in the last three decades, with a strong shift towards professional and technical service activities. In contrast, the level of employment in manufacturing has almost halved between 1996 and 2014. Overall, there were over 5.5 million workforce jobs in London in 2014, 4.7 million of these were employee jobs (which only include workers who are employed by a company or organisation).
- As of 2014, the six industry sectors with the largest number of jobs include:
 - Professional, real estate, scientific and technical activities
 - Administrative and support services
 - Health and social work
 - Retail
 - Education
 - Information and communication
- Collectively these sectors account for over 60 per cent of London's total number of jobs, and are all amongst the highest in terms of absolute growth in the post-recessionary period from 2009 to 2014. Furthermore, there was substantial variation in the level of growth within the industries that make up these six sectors. Overall, this suggests that these sectors are a combination of London's specialised industries, as well as industries that provide services to London's large and rapidly growing population.
- In terms of occupations, professionals (irrespective of sector) accounted for 25 per cent of all jobs in London in 2014, and have grown significantly since 2004. However, a range of other occupations (both high and low skilled) have also grown substantially between 2004 and 2014, indicating that growth has not been limited to professional occupations.
- Workers in London generally have high levels of qualifications compared to the rest of the UK, with a larger proportion of the workforce attaining qualifications at higher education and above.
- Workers employed as managers, senior officials or in professional roles, are much more likely to hold higher education qualifications or above when compared to workers in other occupations. Conversely, those employed in service, sales and skilled trade occupations are more likely not to hold any formal qualifications.
- Analysis from the Centre for Economic and Social Inclusion show that for the largest occupational groups, median pay is generally higher for higher skilled occupations, although there is substantial variation in the level of change between 2011 and 2014 across different occupations in terms of median annual pay and employment.
- The 2013 UKCES employer skills survey found that the highest densities of skills shortage vacancies were reported to be in skilled trades, and caring, leisure and other service staff. The most common skill shortages related to technical, practical or job-specific skills.

Summary – East sub-region

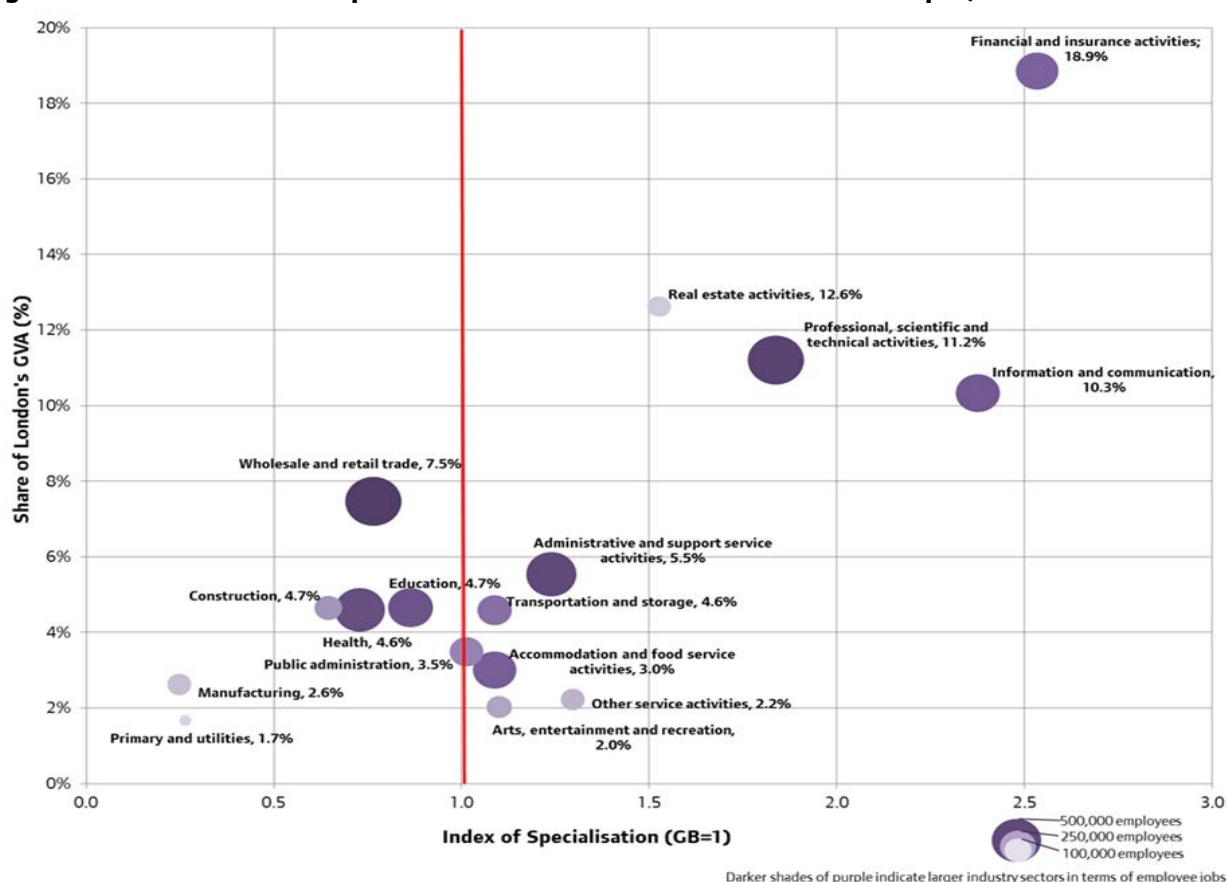
- The East sub-region accounted for approximately 685,000 employee jobs and 852,000 workforce jobs in 2014, approximately 15 per cent of total workforce jobs in London.
- The three industries in the East sub-region that had the highest level rate of recent growth from 2009 to 2014 included:
 - Health and social work
 - Retail
 - Accommodation and food services
- These industries were also amongst the largest sectors in the East sub-region, with health and social work ranking 1st, retail ranking 3rd and accommodation and food services ranking 6th.
- The other largest industry sectors in the East sub-region in terms of the number of jobs included:
 - Administrative and support services
 - Professional, real estate, scientific and technical activities
 - Education
- Together, these six sectors accounted for 63 per cent of total employee jobs in the East sub-region and 9 per cent of total employee jobs in London.
- In line with the trends in London overall, the number of professional occupations in the East sub-region increased significantly from 2004 to 2014. In contrast over the same period, there was however a statistically significant decrease in the number of administrative and secretarial occupations.
- In terms of its occupational structure, the East sub-region accounted for 12 per cent of all jobs in London in the professional occupational category. In contrast, the East sub-region had a higher proportion of London jobs in a number of other occupational groups, including skilled trades (22%), caring, leisure and sales workers (21%) and process, plant and machine operatives and elementary occupations (21%).
- Compared to the rest of London, the East sub-region has a considerably lower proportion of job holders with higher education qualifications or above (42% compared to 61%). Some areas within the East sub-region also tended to have lower average levels of pay. This may reflect relatively lower demand for specialist skills in the East sub-region, compared to the rest of London.

London is a thriving global city with a strong, growing economy and increasing population. The economic success of the capital has been driven by an increasingly connected and integrated global economy. As markets have opened and trade expanded, the size of the market that businesses can sell into has made it more economically viable to specialise in the types of products or services in which London has a comparative advantage (i.e. that London is relatively better at than its trading partners). For London, this has meant increasingly specialising in professional and technical service activities. This specialisation has in turn created a strong demand for highly skilled, highly productive labour, and generates demand for further economic activities in other parts of the UK² as well as for localised services.

² GLA Economics, [Growing Together II: London and the UK economy](#), September 2014

London's current industrial structure reflects this process of increasing specialisation, and is demonstrated in the index of specialisation shown in **Figure 1**. This shows that if London reflected the same employee proportions as Great Britain (GB) as a whole, then all the sectors shown would be located on the vertical red line in the diagram. The vertical axis looks at the proportion of London's total output (or gross value added – GVA) that each individual sector contributes. The diagram demonstrates that London's economic activity is, in the main, concentrated in, what might be considered as high value business services (those in the top right quadrant with high specialisation and a relatively high proportion of total output). This includes financial and insurance services, information and communication, professional, scientific and technical services, and real estate activities, which together, accounted for more than half (54%) of London's economic output in 2014. A forthcoming report shows that ONS estimates London's total nominal gross value added (GVA) at over £364 billion in 2014³.

Figure 1: London's index of specialisation and share of London's total output, 2014⁴



Source: Business Register and Employment Survey (BRES) – ONS, UK Regional Accounts – ONS.

These broad sector headings hide a range of economic activity and differing degrees of specialisation within a particular sector. When examined at a more disaggregated level, it can be seen that London specialises in such things as securities broking/fund management, television programming and broadcasting, as well as in media activities such as advertising. Outside of the high value business services, it also shows that London is relatively specialised in air transport, private security and creative arts and entertainment. GLA Economics

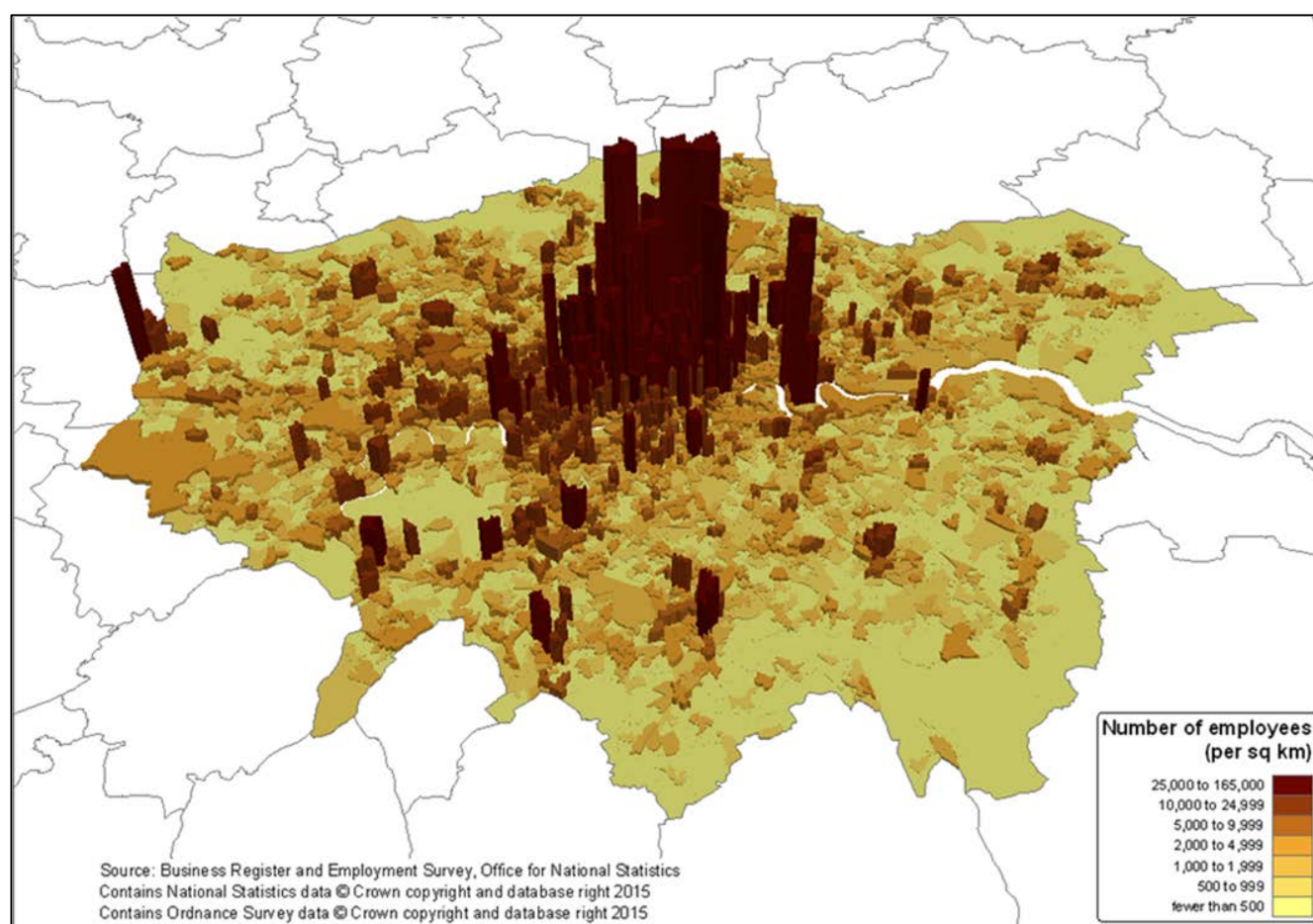
³ GLA Economics, 2016 (forthcoming), Regional, sub-regional and local gross value added estimates for London, 1997-2014

⁴ Index of specialisation calculations are based on BRES data that include country-level data on employee jobs for Great Britain: England, Scotland and Wales. The index of specialisation is calculated as follows: (sector employee jobs in London / all employee jobs in London) / (sector employee jobs in Rest of GB / all employee jobs in Rest of GB). Both GVA and employee jobs numbers refer to 2014.

have also researched a number of cross-cutting sectors such as tourism⁵, science and technology⁶ and creative industries⁷, which incorporate parts of various – and sometimes overlapping – industries.

This sectoral specialisation has also, to a degree, manifested itself in a spatial concentration whereby particular (and many) functions of London's economy have tended to locate in certain areas of London – particularly in the centre. The resulting concentrations of businesses and skilled labour bring benefits to the economy over and above those that accrue to the individual firms themselves: so-called agglomeration benefits. **Map 2** below shows that while the number of jobs is highly concentrated in the Central Activities Zone (CAZ) and Northern Isle of Dogs⁸, some industrial areas and various town centres, such as Uxbridge also see high levels of employment concentration.

Map 2: Number of employees per square kilometre in London, 2013



This concentration of specialised, economic activities serves to draw in workers from across London and beyond. London's significant population also generates further demand for localised services (such as schooling, healthcare, retail and other customer services). The opportunities for employment available to learners in a particular London sub-regional area will therefore often derive from the demand for skilled labour in the wider region as employers are able to draw on a broader pool of labour, beyond those in the immediate vicinity. Analysis of the 2011 Census shows that, of those working in London as their main job,

⁵ GLA Economics, March 2015, [The value of cultural tourism to London](#), Current issues note 44

⁶ GLA Economics, March 2015, [The science and technology category in London](#), Working paper 64

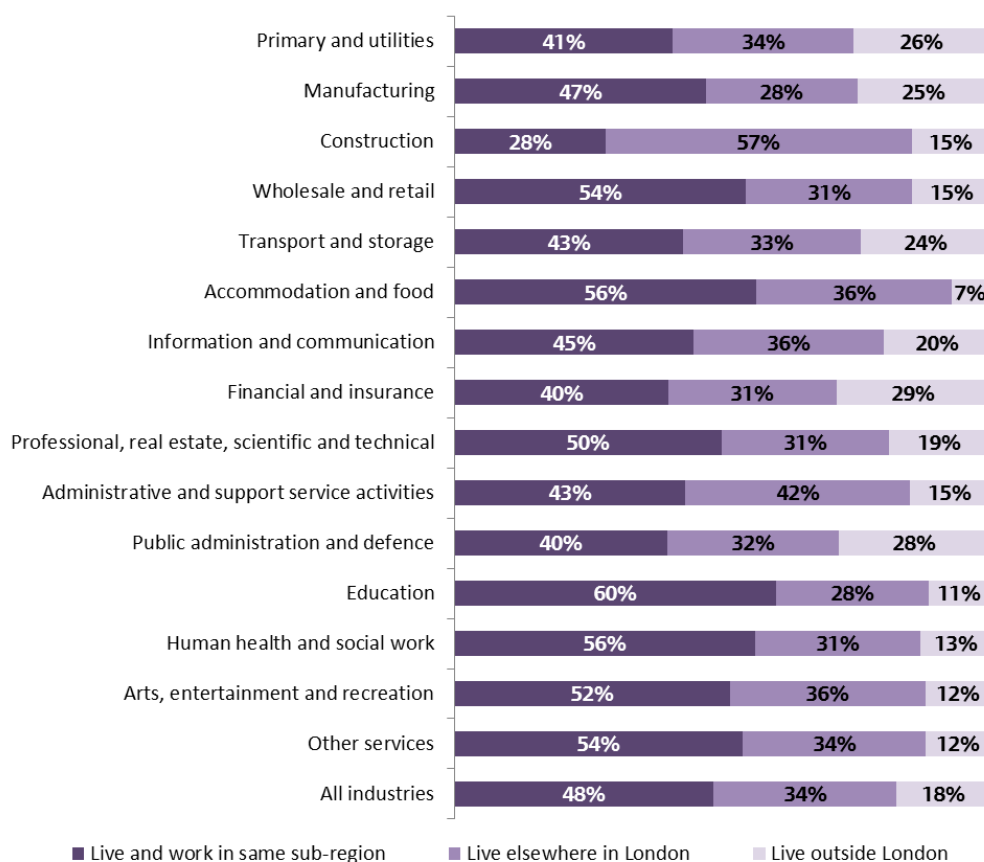
⁷ GLA Economics, October 2015, [The creative industries in London](#), Working paper 70

⁸ Further information on clustering of employment activities within the CAZ and the Northern Isle of Dogs is provided in: GLA Economics, August 2015, [Work and life in the Central Activities Zone, northern part of the Isle of Dogs and their fringes](#), Working paper 68

less than half (48%) work in the same sub-region as they live, while 18 per cent commuted in from outside London. The other 34 per cent either worked in a different sub-region from where they lived, or worked across the wider area with no fixed place of work⁹.

Figure 2 shows that these patterns of commuting vary by industry for London. For example, a majority of Londoners working in the construction industry have no fixed place of work, or work in a different London sub-region to where they live, with only 28 per cent working in their home sub-region. In contrast, 60 per cent of those working in education lived in the same sub-region as their place of work, with 28 per cent commuting to work from another London sub-region. London's highly specialised, financial and insurance sector draws in the highest proportion (29%) of its workers from outside London.

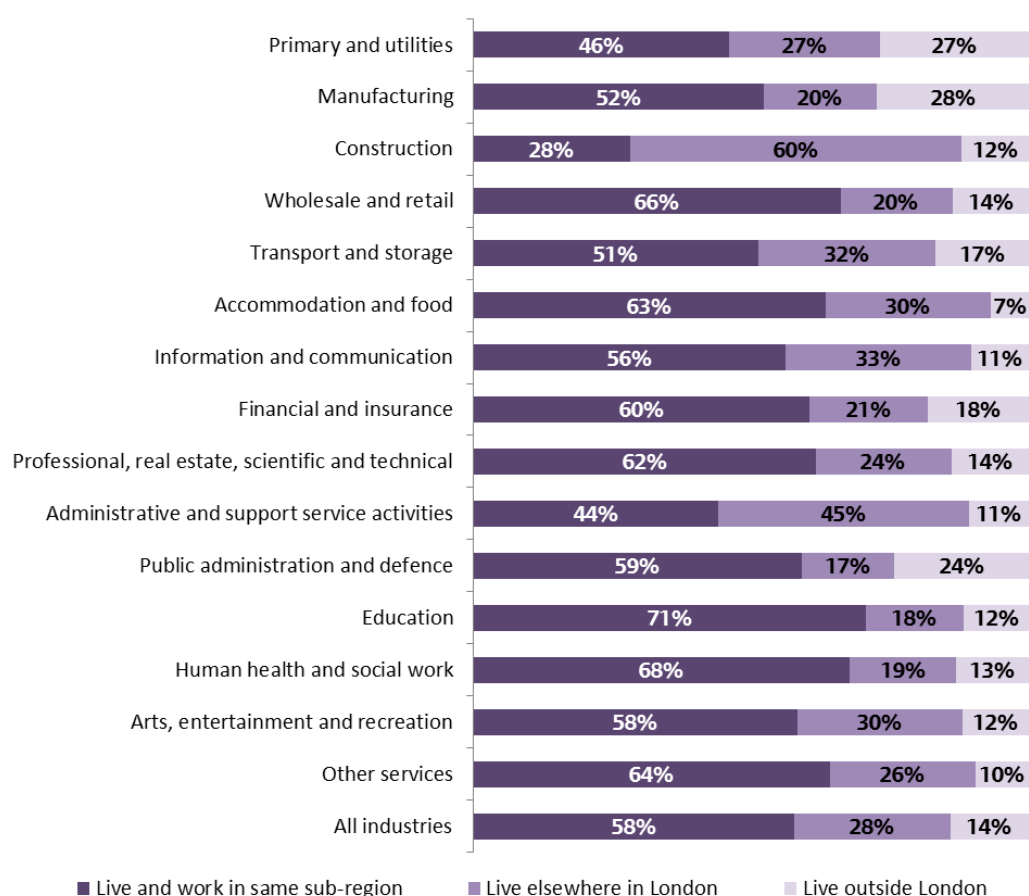
Figure 2: Place of usual residence of London workers by industry, 2011



Source: ONS 2011 Census. Notes: Data includes those working at no fixed place (equivalent to 9% of all workers) as working elsewhere in London, while those reporting to mainly work from home are included in those living and working in the same sub-region.

⁹ Taken at Borough level, this pattern of employers drawing in labour from across the wider region is magnified with only 27% of workers in London living in the same Borough as their place of work, with a further 55% commuting in from elsewhere in London, or having no fixed place of work.

Figure 3: Place of usual residence of workers in the East sub-region by industry, 2011



Source: ONS 2011 Census. Notes: Data includes those working at no fixed place (equivalent to 18% of all workers) as working elsewhere in London, while those reporting to mainly work from home are included in those living and working in the same sub-region.

Figure 3 shows the same data for the East sub-region. Overall, 42 per cent of workers in the East sub-region commute into the area for work, which is much lower than the proportion of commuters for London (52%). There are some sectors in which a relatively higher proportion of workers live and work in the East sub-region, these include education (71% in the East, compared to 60% in London), human health and social work (68% in the East, compared to 56% in London), and wholesale and retail (66% in East compared to 54% in London). The following sections of this report show that these sectors are among the largest sectors in the East sub-region in terms of employee jobs.

Some of the smaller sectors in the East sub-region also have a relatively high proportion of people who both live and work in the East sub-region, including public administration (59% in the East, compared to 40% in London), financial and insurance services (60% in the East, compared to 40% in London), and information and communication (56% in the East, compared to 45% in London).

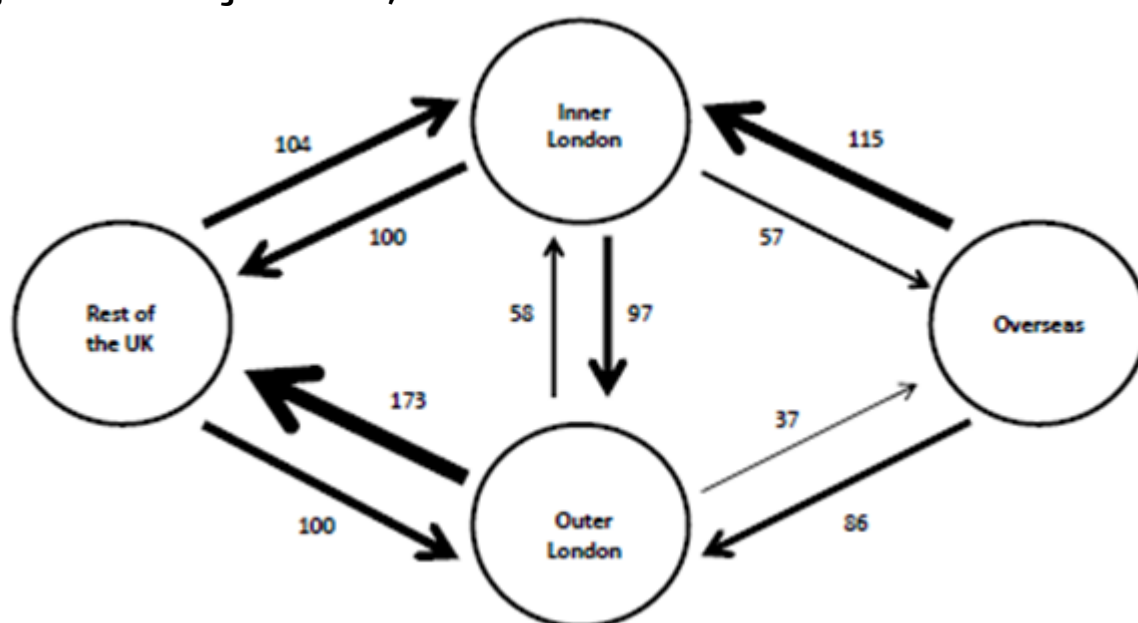
In comparison, the South East sub area had a higher proportion of workers (61%) commuting into the area and for those working at no fixed place. These rates were particularly high among the construction (80% of workers), primary and utilities sectors (75% of workers), and transport and storage (72% of workers). However, this data suggests that much of this stems from people commuting from other parts of London.

These commuting patterns suggest that across a range of both large and small sectors, a slightly lower proportion of people commute to the East sub-region for work compared to the London average, which places a relatively higher emphasis on localised services and jobs. A caveat with this analysis is that because

this data is drawn from the Census, it is a snapshot in time and does not capture the dynamic nature of the labour market as people are continually changing where they live and where they work.

London also draws in labour from across the UK and the rest of the world. **Figure 4** shows the pattern of internal and international migration flows in relation to London (split here by inner and outer London)¹⁰ for mid-2014. This figure indicates that 201,000 people moved to London from overseas, and 204,000 people relocated from other regions of the UK in 2014. These inflows are partly offset by flows of 273,000 people moving from London out to the rest of the UK, as well as 94,000 people leaving the UK. Those moving out of London into nearby regions may still however choose to commute back into London for work. This pattern suggests that the role of migration and commuting flows both play an important role in shaping London's labour supply, and its ability to meet the demand for new workers.

Figure 4: London migration flows, mid-2014



Source: ONS Mid-year population estimates, ONS internal migration estimates

The following sections describe the composition of demand for jobs and skills by sector in London and the East sub-region, and how it is changing in terms of: the number of jobs, the type of work, the qualifications held and the wages earned. It also provides indications of unmet demand in terms of job vacancies.

2.1 Industry structure

This section presents an analysis of how the number of jobs across different industries in London and the East sub-region has changed over time. It begins with a broad outline of how the number of jobs in London has changed over the long term (1984-2014), before exploring how the number of jobs has changed in recent years (from 2009-2014) based on data available at more detailed industry levels within London and the East sub-region. Specifically, this section will outline the level of GVA, the level and change in workforce jobs, and the broad industry structure of the South East sub-region.

¹⁰ Inner London includes: City of London, Camden, Hackney, Hammersmith and Fulham, Haringey, Islington, Kensington and Chelsea, Lambeth, Lewisham, Newham, Southwark, Tower Hamlets, Wandsworth, and Westminster. Outer London includes: Barking and Dagenham, Barnet, Bexley, Brent, Bromley, Croydon, Ealing, Enfield, Greenwich, Harrow, Havering, Hillingdon, Hounslow, Kingston upon Thames, Merton, Redbridge, Richmond upon Thames, Sutton, and Waltham Forest.

This section provides some context around London's labour market and provides a benchmark for further analysis on the demand for jobs and skills. The long-term data on London is drawn from the ONS workforce jobs series, which includes self-employed as well as workers employed by a company or organisation (known as 'employee jobs'¹¹). This data is however unavailable for the East sub-region, so instead the detailed industry sector analysis uses data from the ONS Business Register Employment Survey (BRES)¹², which only includes the number of employee jobs. This BRES data is used for the detailed industry sector analysis for both London and the East sub-region to ensure these areas are compared on a consistent basis. Both the workforce jobs and employee jobs present counts of the number of jobs located in London, irrespective of whether or not they are held by London residents, which includes both full-time and part-time jobs¹³.

This report does not specifically examine changes within London's business population; however GLA Economics has conducted previous research into this area through the London Business Survey¹⁴.

Industry structure – London

Figure 5 shows that overall London workforce jobs have increased substantially from 4.1 million in 1984, and reached 5.5 million workforce jobs in 2014. However, the overall level of growth of London's workforce has varied over time, with relatively higher levels of job growth in the recent period from 2010 to 2014, following the 2008/09 recession when workforce jobs declined by 100,000 to 4.8 million in 2009.

Since the 2008/09 recession output growth has been sluggish by historical post-recession standards while employment growth has been uncharacteristically and unexpectedly strong (see **Figure 5**). This has led to a stalling in productivity growth. It has been argued that at least some of the strength seen in the labour market has come from increased labour market flexibility and, within that, potentially less stable employment. For example, a 2015 GLAE report on London's changing economy since 2008 found that:

"In 2014, part-time jobs in London accounted for around 29 per cent of total workforce jobs, up from 26 per cent in 2008, whilst self-employment jobs contributed towards 14 per cent of the total, a rise from around 12 per cent in 2008. In comparison, in the UK as a whole part-time accounted for around a third of all jobs in 2014 (around 31 per cent in 2008), whilst self-employment jobs made up around 14 per cent of all jobs (a rise from 12 per cent in 2008)¹⁵."

The same report also found that wages have generally failed to keep up with rising costs of living since 2008¹⁵.

¹¹ An employee is defined as anyone working who is aged 16 years or over, that an entity pays directly from its payroll, in return for carrying out full-time or part-time work or engaging with a training programme.

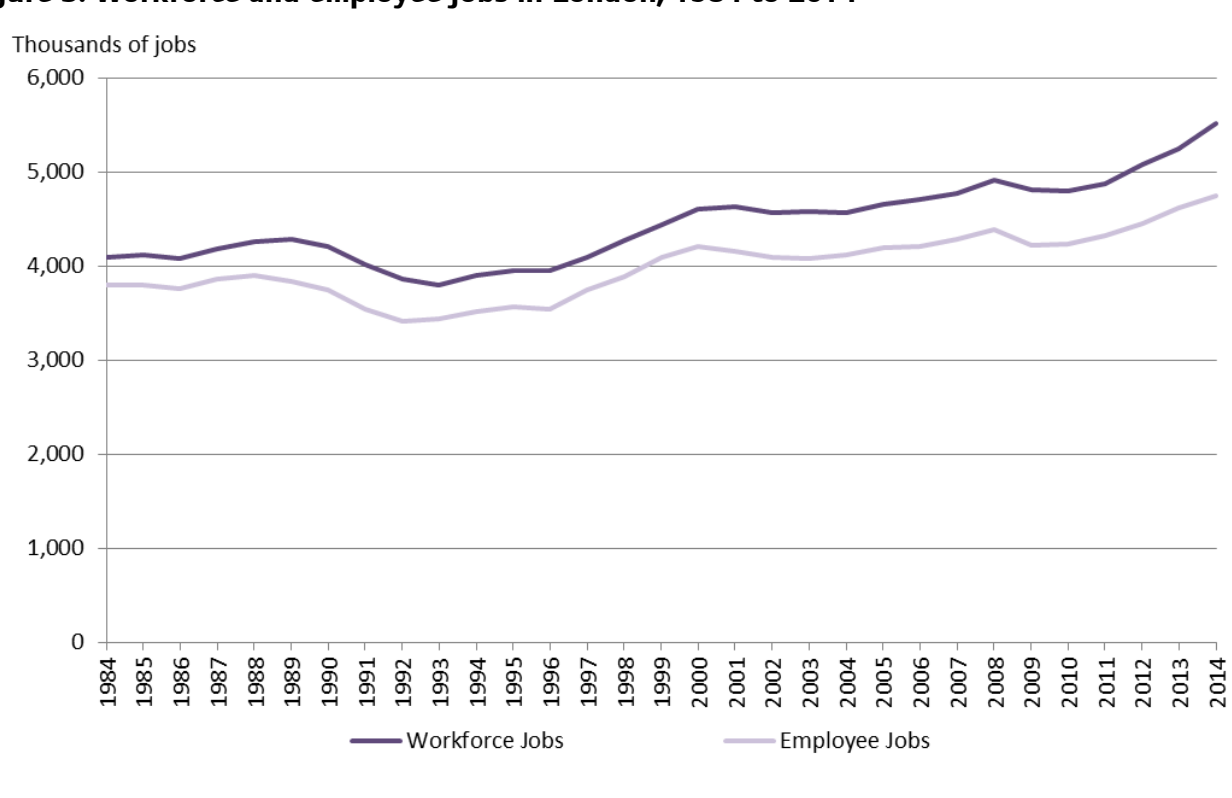
¹² BRES is the primary source for employee estimates at a detailed regional and industrial level. However, as it is a sample survey it means that the margin of error is larger at the more detailed geographies. This means that the jobs estimates at the London geography will be more robust than those for the sub-regional review areas.

¹³ For further information on the role of part-time jobs in London in the recent past, see: GLA Economics, January 2015, '[Part-time employment in London](#)', Current issues note 42.

¹⁴ GLA Economics, November 2014, [London Business Survey: Main Findings](#).

¹⁵ GLA Economics, October 2015, '[London's changing economy since 2008](#)'.

Figure 5: Workforce and employee jobs in London, 1984 to 2014



Source: GLA Economics calculations based on ONS workforce jobs series.

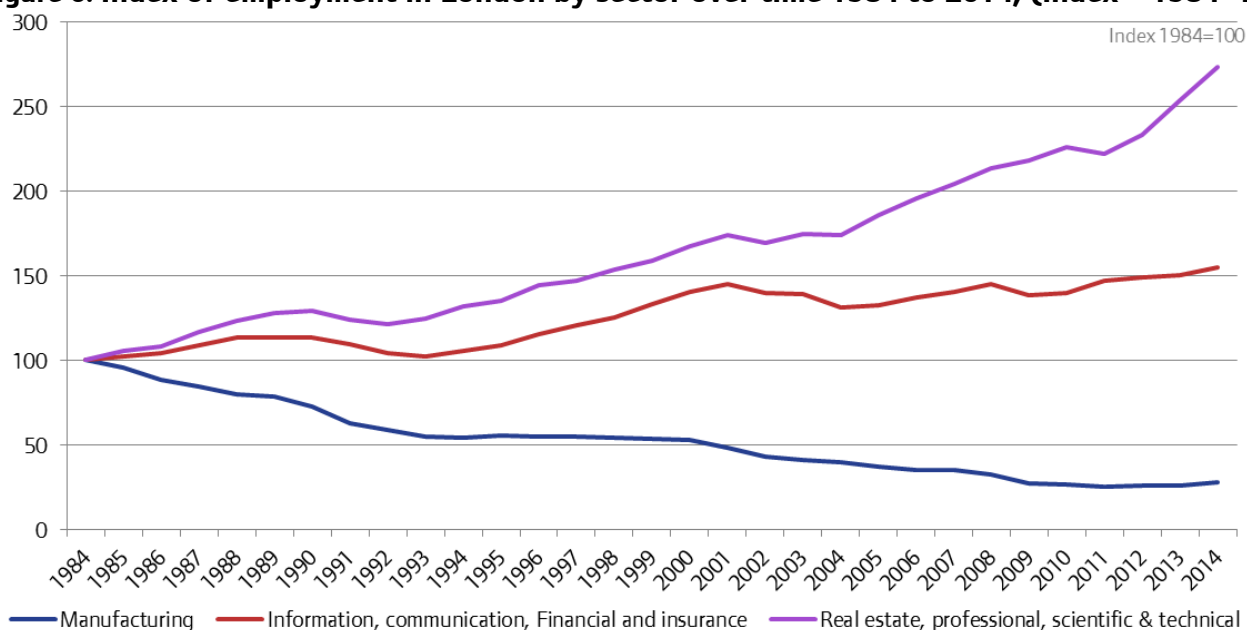
Examining the trends from 1984 to 2014 at an industry level shows that the structure of London's economy has changed substantially in the last three decades with a marked decline in manufacturing, and a strong shift towards business, financial and some other services. This is demonstrated by **Figure 6** which shows the indexed changes in London's industrial structure between 1984 and 2014.

Overall, the number of jobs in manufacturing has fallen from around 476,000 in 1984 to around 134,000 in 2014; while jobs in professional, real estate, scientific and technical activities have more than doubled to around 880,000 over the same period¹⁶. Since the late 1990s, previous GLA Economics analysis of sectors¹⁷ suggests that growth in this sector has been largely driven by the rise in the number of jobs in head office and management consultancy activities supported by growth in real estate, and legal and accounting services.

¹⁶ Figures for manufacturing jobs in 1984 are based on modelled estimates. In contrast, the latest figures for manufacturing jobs are based on official workforce jobs statistics published by the Office for National Statistics (ONS).

¹⁷ GLA Economics, March 2015, '[London's sectors – more detailed jobs data](#)', Working Paper 65

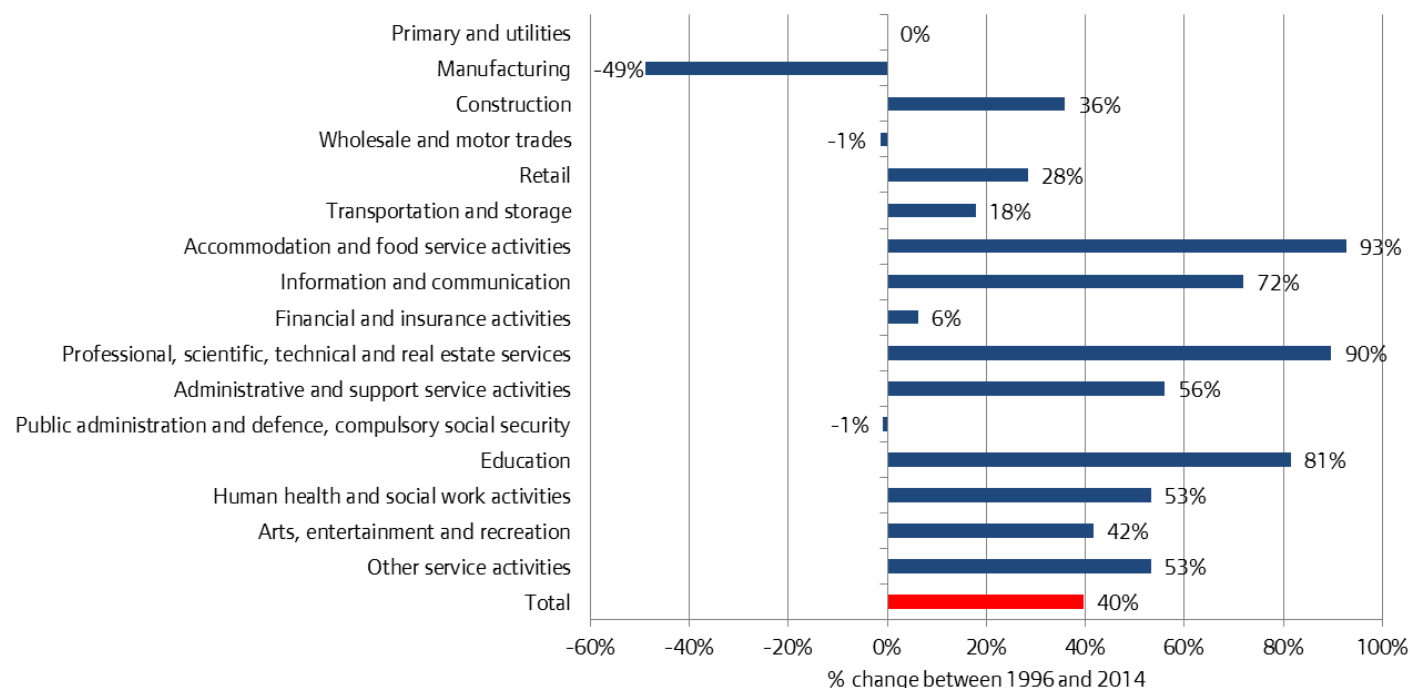
Figure 6: Index of employment in London by sector over time 1984 to 2014, (index – 1984=100)



Source: Workforce Jobs, ONS and GLA Economics modelling.

Figure 7 also shows that professional, scientific and technical activities expanded substantially from 1996 to 2014 and reached 771,000 jobs in 2014 (a 90% increase, up 376,000 jobs). There were also large increases in workforce jobs in accommodation and food service activities (a 93% increase, up 189,000 jobs to 393,000 jobs), education activities (81% increase; up 185,000 jobs to 412,000 jobs) and information and communication (72% increase; up 177,000 jobs to 423,000 jobs).

Figure 7: Changes in jobs in London by sector between 1996 and 2014, (1-digit SIC sector)



Source: Workforce jobs, ONS.

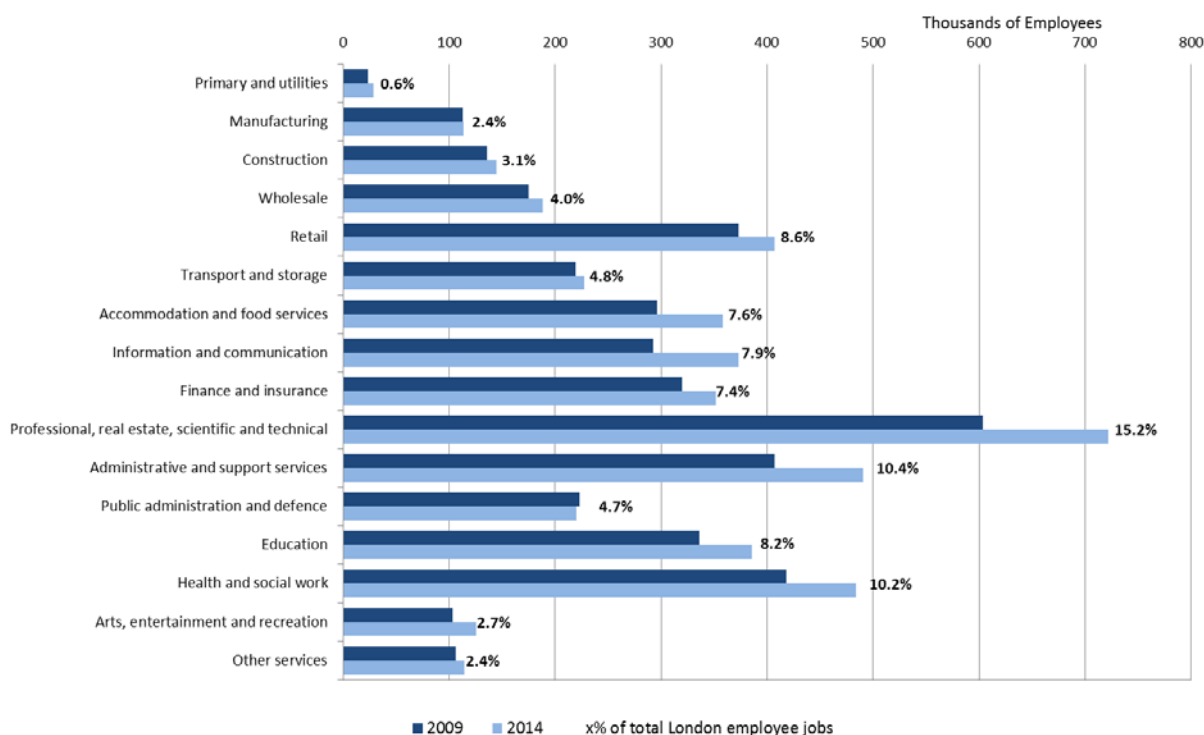
To provide a more detailed analysis of the changes in the number of jobs across different industries in London, this section uses more detailed data from the Business Register Employment Survey (BRES). The

BRES data only includes employee jobs, and has a limited data range from 2009 to 2014¹⁸. However, it does provide a more detailed perspective of industry employment within London, and allows for an exploration of how the number of jobs has changed since the recession from 2008/09.

The BRES data shows that total employee jobs in London increased from 4.1 million in 2009 to 4.7 million in 2014, a 10 per cent increase over this time period. **Figure 8** shows the level and change in employee jobs by broad industry in 2009 and 2014. It shows that between 2009 and 2014 professional, real estate, scientific and technical services increased by 118,000 employee jobs (a 20% increase) to reach 722,000 employee jobs in 2014, accounting for 15.2 per cent of total London employee jobs, the largest industry sector in London. Administrative and support services also increased substantially, increasing by 83,000 employee jobs (a 20% increase) from 2009 to 2014 to reach 491,000 in 2014 to become the second largest industry sector in London. The information and communication sector increased by 81,000 employee jobs (a 28% increase) from 2009 to 2014, to 373,000 employee jobs (the 6th largest sector in London).

The overall level of growth for the other large sectors in London was lower than the industries noted above; however, these remained important sources of jobs growth in London. For instance between 2009 and 2014, health and social work (the 3rd largest industry sector) increased by 66,000 employee jobs (a 16% increase) to reach 484,000 employee jobs, education (the 4th largest sector) increased by 49,000 employee jobs to reach 386,000 employee jobs. Finally, retail, the 5th largest industry sector in London reached 407,000 employee jobs in 2014, up by 34,000 jobs (a 9% increase) from 2009 to 2014.

Figure 8: Employee jobs in London by broad industry sector (1-digit SIC sector), 2009 and 2014



Source: ONS Business Register Employment Survey. Notes: Figures rounded to nearest 1,000 (after suppression rules applied in accordance with ONS disclosure requirements).

¹⁸ Provisional ONS BRES data for 2015 will not be published until 22 September 2016. Release dates for other official labour market statistics are available at: https://www.nomisweb.co.uk/home/release_dates.asp, accessed on 16 February 2016.

Together the six sectors summarised in **Table 2** represent the largest industries sectors in London (in absolute terms) and are also among the highest in terms of absolute growth in recent years. Collectively these industries account for over 60 per cent of total employee jobs in London.

Table 2: Summary of the six largest sectors in London by employee jobs (1-digit SIC sector) 2009 to 2014

Sector	2014 employee jobs	Employee jobs rank (1-16)	Share of total London employee jobs (%)	Share of total London employee jobs (1-16)	Growth in employee jobs (2009-2014)	Growth rank (1-16)
Professional, real estate, scientific and technical activities	722,000	1	15.2%	1	118,000	1
Administrative and support services	491,000	2	10.4%	2	84,000	2
Health and social work	484,000	3	10.2%	3	66,000	4
Retail	407,000	4	8.6%	4	34,000	7
Education	386,000	5	8.1%	5	49,000	6
Information and communication	373,000	6	7.9%	6	81,000	3
Total employee jobs	4,733,000		100.0%		589,000	

Source: ONS Business Register Employment Survey. Notes: Figures rounded to nearest 1,000 (after suppression rules applied in accordance with ONS disclosure requirements).

The following section breaks down the selected sectors into more detail, using the 2-digit or 3-digit standard industrial classification (SIC) where appropriate.

Professional, real estate, scientific and technical activities (722,000 employee jobs in 2014):

- The largest sub-sector in this industry is activities of head offices; management consultancy activities, which accounted for 222,000 employee jobs in 2014, up 57,000 from 2009. This recent growth consisted of increases in business and other management consultancy (up 31,000 employee jobs, a 26% increase to 147,000 employee jobs in 2014) and activities of head offices (up 27,000 jobs, a 56% increase to 75,000 employee jobs in 2014).
- Other large sub-sectors within this industry include legal and accounting activities (173,000 employee jobs in 2014) of which 87,000 employee jobs were in accounting, bookkeeping, auditing and tax consultancy, and 86,000 employee jobs were in legal activities; real estate activities (108,000 employee jobs in 2014), architectural and engineering activities; technical testing and analysis (74,000 employee jobs in 2014) and advertising and market research (70,000 employee jobs in 2014).

Administration and support services (491,000 employee jobs in 2014):

- The largest sub-sector within this industry is employment activities, which accounted for 164,000 employee jobs in 2014, up 141,000 from 2009. This recent growth consisted largely of an increase in temporary employment agency activities (up 21,000 employee jobs, a 20% increase to 127,000 jobs) which include temporary employees working across a range of industry sectors.
- Office administrative, office support and other business support activities accounted for 89,000 employee jobs in 2014, up 34,000 from 2009 (a 62% increase).
- Other large sub-sectors in this industry include services to buildings and landscape activities (143,000 employee jobs in 2014) and security and investigation services (56,000 employee jobs in 2014).

Health and social work (484,000 employee jobs in 2014):

- The largest sub-sector within this industry is human health activities, which accounted for 280,000 employee jobs in 2014, up 51,000 jobs from 2009. This recent growth consisted largely of an increase in hospital activities (up 28,000 employee jobs, an 18% increase to 186,000 employee jobs in 2014) and medical and dental practice activities (20,000 employee jobs, a 73% increase to 46,000 employee jobs in 2014).
- Other large sub-sectors in this industry include social work activities without accommodation (140,000 employee jobs in 2014) and residential care activities (64,000 employee jobs in 2014).

Retail (407,000 employee jobs in 2014):

- The largest sub-sector in this industry is retailing in non-specialised stores (including supermarkets and department stores) which accounted for 161,000 employee jobs in 2014, up 12,000 jobs from 2009 (an 8% increase).
- Retailing of other goods in specialised stores accounted for 130,000 employee jobs in 2014, up 14,000 from 2009 (a 12% increase). Recent growth in this sub-sector was in part due to increases in the number of jobs in clothing stores (up 8,000 employee jobs to 69,000 employee jobs in 2014, a 13% increase) and dispensing chemists (up 2,000 employee jobs, a 31% increase to 10,000 employee jobs in 2014).
- Other large sub-sectors in this industry include retailing of household goods in specialised stores (32,000 employee jobs in 2014) and food and beverage retailing in specialised stores (26,000 employee jobs in 2014).

Education (386,000 employee jobs in 2014):

- The largest sub-sector within this industry is primary education, which accounted for 144,000 employee jobs in 2014, up 13,000 employee jobs from 2009 (a 10% increase).
- Higher education accounted for 80,000 employee jobs in 2014, up 14,000 employee jobs from 2009 (a 20% increase).
- Secondary education is another large sub-sector in this industry accounting for 103,000 employee jobs in 2014, up 3,000 employee jobs since 2009 (a 3% increase).

These selected sectors are important to London's economy for different reasons. Some of these sectors, such as professional services, real estate, administration and support services and information and communications are large and are relative specialisations of London's broader economy (see **Figure 1**). In contrast, other sectors such as retail, education and health serve London's large population, which is projected to continue to grow rapidly in the future (see section 4).

Industry structure – East sub-region

This section examines how the industrial structure within the East sub-region has changed over time and also how it relates to London's wider industrial structure. An important aspect of this analysis is that the London labour market should mainly be conceptualised as a cohesive, London-wide labour market, rather than as discrete, separate areas, although examining the East sub-region in more detail can provide more insight into more localised trends.

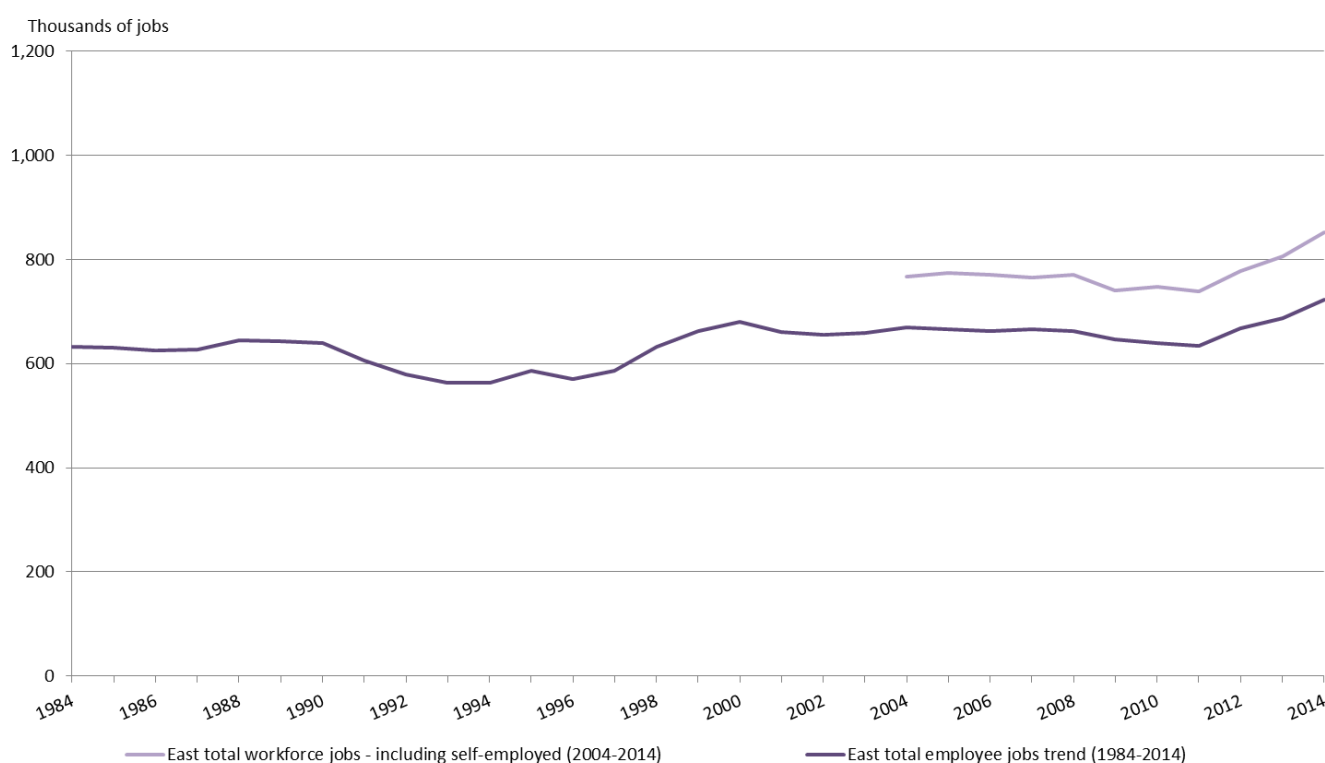
Another limiting factor is that workforce jobs data is not available for the East sub-region and the data from BRES on employee jobs by industry is limited in scope to 2009-2014. However, GLA Economics has modelled workforce jobs from 2004-2014 (incorporating estimates of self-employed and employee jobs). GLA Economics have also modelled employee jobs from 1984-2014 for the East sub-region (as well as the South East sub-area), and these four modelled series are presented in **Figure 9**.

This shows that overall employee jobs has varied over time within the East sub-region, with relatively higher jobs growth between 1997-2000 and 2011-2014, interceded by periods of either low jobs growth or declines in total employee jobs. This trend is mirrored in the workforce jobs trend, which increased substantially from 740,000 jobs in 2009 to 852,000 jobs in 2014, a 15 per cent increase. This trend is in line with jobs growth in London, which showed a strong increase in workforce jobs between 2008 and 2014 (see **Figure 5**). Overall, in 2014 the East sub-region accounted for approximately 15 per cent of London's total workforce jobs.

The trend of jobs growth in the South East sub area also follows the broad trend at the East sub-region and London level, albeit off a lower base. In 2014 the East sub area reached 297,000 workforce jobs respectively, up from a low of 270,000 workforce jobs in 2009. Overall, in 2014 the South East sub area accounted for approximately 6 per cent of London's total workforce jobs.

A forthcoming report by GLA Economics estimates the East sub-region's nominal gross value added (GVA) at approximately £48 billion in 2014 (13% of London's total GVA). The 2014 nominal gross GVA in the South East sub area was £16 billion (4% of London's total GVA)¹⁹.

Figure 9: Workforce jobs and employee jobs in the East sub-region (thousands), 1984-2014



Source: GLA Economics, July 2015, updated employment projections for London and trend-based projections by borough

¹⁹ GLA Economics, 2016 (forthcoming), Regional, sub-regional and local gross value added estimates for London, 1997-2014

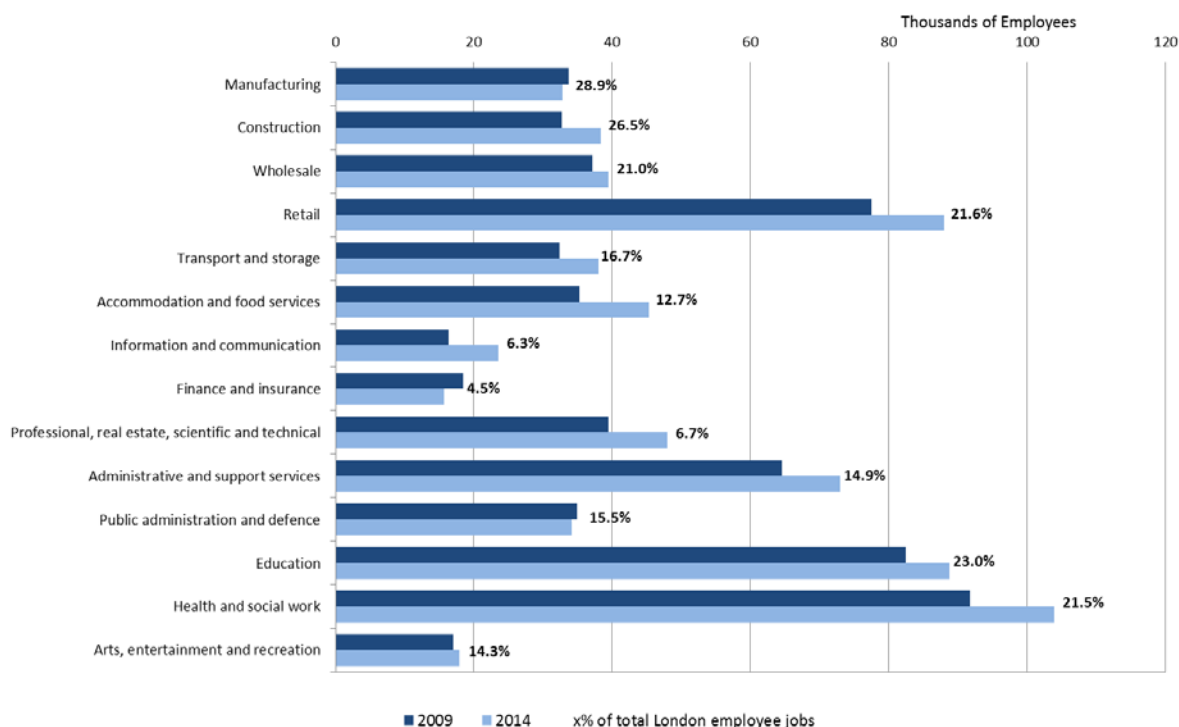
The BRES data shows that total employee jobs in the East sub-region increased from 633,000 employee jobs in 2009 to 685,000 employee jobs in 2014, a 12 per cent increase over this time period. Overall, the East sub-region accounted for approximately 15 per cent of employee jobs in London in 2014.

Figure 10 shows that the largest sector in terms of employee jobs in the East sub-region was health and social work, and accounted for 104,000 employee jobs in 2014. This sector increased by 12,000 employee jobs from 2009 to 2014 (a 13% increase, compared to a 16% increase in the sector at the London level). Education was the 2nd largest sector in terms of employee jobs, and accounted for 89,000 employee jobs in 2014. This sector increased by 6,000 employee jobs from 2009 to 2014 (a 7.5% increase, compared to a 5% increase at the London level). Retail is the 3rd largest sector in terms of employee jobs, and accounted for 88,000 employee jobs in 2014. This sector increased by 11,000 jobs from 2009 to 2014 (a 14% increase, compared to a 9% increase at the London level). Administrative and support services was the 4th largest sector in 2014, accounting for 73,000 employee jobs in 2014. This sector increased by 9,000 employee jobs from 2009 to 2014 (a 13% increase, compared to a 20% increase at the London level). Professional, real estate, scientific and technical services was the 5th largest sector in 2014, accounting for 48,000 employee jobs. This sector increased by 9,000 employee jobs from 2009 to 2014 (a 22% increase, compared to a 20% increase at the London level). Accommodation and food services, the 6th largest sector, which account for 45,000 employee jobs in 2014, increased by 10,000 employee jobs from 2009 to 2014 (a 28% increase, compared to a 20% increase at the London level).

Figure 10 also shows the sectors in the East sub-region that account for a slightly higher number of employee jobs relative to the size of the sector in London as a whole. These include manufacturing (29% of total London employee jobs, accounting for 33,000 employee jobs in 2014) and construction (27% of total London employee jobs, accounting for 38,000 employee jobs).

The proportion of total employment across the different industry sectors within the South East sub area was similar to that of the East sub-region as a whole; however, there is some variation in the level of recent growth among some sectors. In particular, the number of employees in administrative and support services and decreased slightly in the South East sub area from 2009 to 2014, whereas over the same period there was an increase at the East sub-region level. Similarly, the number of employee jobs in education remained stable from 2009 to 2014 in the South East sub area from 2009 to 2014, while there was an increase in employee jobs at the East sub-region level.

Figure 10: Employee jobs in the East sub-region by broad industry sector (1-digit SIC sector), 2009 and 2014



Source: Business Register Employment Survey, ONS Notes: Primary and utilities and other services have been suppressed.

Together the six sectors summarised in **Table 3** represent the largest industries sectors in the East sub-region (in absolute terms) and are also among the highest in terms of absolute growth in recent years. Collectively these industries account for over 63 per cent of total employee jobs in the East sub-region and 9 per cent of total employee jobs in London.

Table 3: Summary of the largest and the fastest growing industries in the East sub-region by employee jobs (1-digit SIC sector), 2009 to 2014

Sector	2014 employee jobs	Employee jobs rank (1-16)	Share of total London employee jobs (%)	Share of total London employee jobs (1-16)	Growth in employee jobs (2009-2014)	Growth rank (1-16)
Health and social work	104,000	1	21.5%	5	12,000	1
Education	89,000	2	23.0%	3	6,000	7
Retail	88,000	3	21.6%	4	11,000	2
Administrative and support services	73,000	4	14.9%	9	9,000	5
Professional, real estate, scientific and technical	48,000	5	6.7%	12	9,000	4
Accommodation and food services	45,000	6	12.7%	11	10,000	3
Total employee jobs	710,000		15.0%		77,000	

Source: ONS Business Register Employment Survey. Notes: Figures rounded to nearest 1,000 (after suppression rules applied in accordance with ONS disclosure requirements).

The following section breaks down the selected sectors into more detail, using the 2-digit or 3-digit SIC where appropriate.

Health and social work (104,000 employee jobs in 2014; 22% of London employee jobs in the sector):

- The largest sub-sector within this industry is human health activities, which accounted for 53,000 employee jobs in 2014, up 3,000 jobs from 2009. This recent growth consisted largely of an increase in medical and dental practice activities (up 5,000 employee jobs, a 77% increase to 12,000 employee jobs in 2014). Other human health activities (which include medical and paramedical specialists such as physiotherapists, medical imaging and blood analysis laboratories), which increased by 3,000 employee jobs, a 28 per cent increase to 12,000 employee jobs in 2014. In contrast, hospital activities decreased in the number of jobs (down 5,000 employee jobs, a 14% increase to 29,000 employee jobs in 2014).
- Other large sub-sectors in this industry include social work activities without accommodation (31,000 employee jobs in 2014) and residential care activities (19,000 employee jobs in 2014).

Education (89,000 employee jobs in 2014; 23% of London employee jobs in the sector):

- The largest sub-sector within this industry is primary education, which accounted for 42,000 employee jobs in 2014, an 8 per cent increase on 2009 (3,000 employee jobs).
- Secondary education increased by 2,000 employee jobs from 2009 to 2014 to reach 31,000 employee jobs (an 8% increase)
- Other large sub-sectors within this industry include other education (8,000 employee jobs in 2014) and other education (5,000 employee jobs).

Retail (88,000 employee jobs in 2014; 22% of London employee jobs in the sector):

- The largest sub-sector in this industry is retailing in non-specialised stores (including supermarkets and department stores) which accounted for 41,000 employee jobs in 2014, up 6,000 jobs from 2009 (a 16% increase).
- Retailing of other goods (such as clothing, footwear and pharmaceuticals) in specialised stores increased from 19,000 employee jobs in 2009 to 23,000 employee jobs in 2014 (a 20% increase).
- Other large sub-sectors in this industry include and retailing of household equipment in specialised stores (8,000 employee jobs in 2014). Retailing of food, beverages and tobacco in specialised stores (5,000 employee jobs in 2014), and retailing of cultural and recreation goods in specialised stores (5,000 employee jobs in 2014).

Administration and support services (73,000 employee jobs in 2014, 15% of London employee jobs in the sector):

- The largest sub-sector within this industry is services to buildings and landscape activities, which accounted for 32,000 employee jobs in 2014, up from 25,000 from 2009, a 28 per cent increase. This recent growth consisted of an increase in cleaning activities (up 5,000 employee jobs, a 21% increase to 28,000 jobs in 2014) and combined facilities support activities (up 2,000 employee jobs, to 4,000 employee jobs in 2014)

- Private security activities accounted for 11,000 employee jobs in 2014, up 2,000 employee jobs from 2009 (a 17% increase).
- Other large sub-sectors in this industry include temporary employment agency activities (12,000 employee jobs in 2014) and business support services nec²⁰ (7,000 employee jobs in 2014).

Professional, real estate, scientific and technical activities (48,000 employee jobs in 2014; 7% of employee jobs in the sector):

- The largest sub-sector in this industry is real estate activities which accounted for 12,000 employee jobs in 2014, up 1,000 from 2009 (a 10% increase). This recent growth consisted largely of an increase in real estate activities on a fee or contract basis (up, 1,000 employee jobs from, an 18% increase to 7,000 employee jobs in 2014).
- Activities of head offices; management consultancy activities, accounted for 11,000 employee jobs in 2014, up 2,000 from 2009 (a 31% increase). This recent growth consisted largely of increases management consultancy services (up 2,000 employee jobs, a 38% increase to 8,000 employee jobs in 2014).
- Other large sub-sectors within this industry include legal and accounting activities (12,000 employee jobs in 2014), architectural and engineering activities; technical testing and analysis services (6,000 employee jobs in 2014), and other professional, scientific and technical activities (4,000 employee jobs in 2014) – which includes photography, specialised design and translation services.

Accommodation and food services (45,000 employee jobs in 2014; 13% of London employee jobs in the sector):

- The largest sub-sector in this industry is restaurants and mobile food service activities, which accounted for 25,000 employee jobs in 2014, up 9,000 jobs from 2009 (a 53% increase). Event catering and other food service activities also increased by 4,000 jobs from 2009 to 2014 to reach 9,000 employee jobs in 2014.
- Other large sub-sectors in this industry include beverage serving activities (8,000 employee jobs in 2014) and hotels and similar accommodation (3,000 employee jobs in 2014).

2.2 Occupations and qualifications

This section presents data from the Annual Population Survey (APS), which provides information on the type and nature of work carried out and the qualifications held by the workforce. The APS is a household survey relying on self-reporting and self-classification, and is therefore subject to survey error and is not directly comparable to the BRES series presented in the previous section. Due to these caveats, the analysis presented in this section is focused towards a high level analysis of occupations and qualifications in London and the East sub-regional area, and caution needs to be taken when interpreting results.

Although the APS is a household survey, information is also recorded on the place of work of those within the household who are in-work, and it is this information which is used to understand the occupational structure and level of formal qualifications held by workers in London and the East sub-region. Therefore, this section presents data on the occupation and qualification structure of where people work, rather than

²⁰ Not Elsewhere Classified

their place of residence. The APS series began in 2004 and so the data in this section includes data from 2004 to the latest available data in 2014²¹.

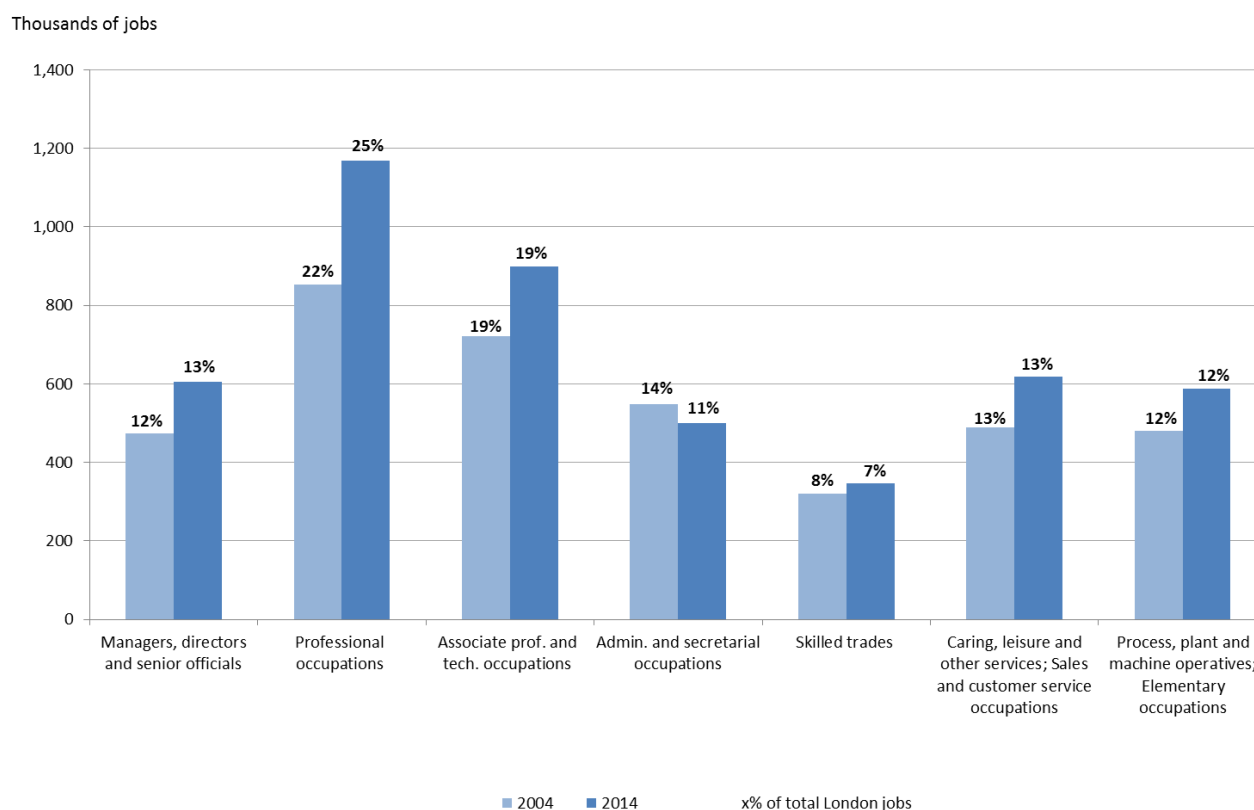
Formal qualifications are a key pathway through which people develop skills and the attainment of qualifications can act as a signal to employers of an employee's prerequisite skills. Therefore, at an aggregate level, formal qualification levels of a workforce can act as indicator of the availability of skilled labour within the economy. They do not however easily account for the skills people acquire within the workplace or through informal learning, while the possession of a particular qualification level does not mean that these skills are necessarily in demand or used in the workplace. Information on the occupational structure, which better reflects the nature of work and work tasks, provides an alternative indicator of the demand for skilled labour. This is why the occupation data presented in this section is particularly useful for understanding skill levels, as it can serve as an indicator of an individual's wider knowledge, skills and competencies, giving a more rounded view of the skill level necessary to undertake the job.

Occupational structure – London

Figure 11 provides a breakdown of the number of people employed in different broad occupational groups (1-digit SOC category) across London in 2004 and 2014. It shows there were 1.2 million jobs (25% of all London jobs) in professional occupations in 2014. A further 19 per cent (926,000 jobs) were in associate professional and technical occupations. Between 11 and 13 per cent of jobs (500,000 and 630,000 jobs) were in managerial; administrative; caring, leisure, sales and service; or process, plant and elementary occupations. The remaining 7 per cent of jobs (345,000 jobs) related to jobs in skilled trades (such as mechanics, electricians and chefs). Overall since 2004, the proportion of jobs across most occupations has remained relatively stable, with the only substantial changes occurring in professional occupations (22% to 25%) and administrative and secretarial occupations (14% to 11%).

²¹ ONS APS data for 2015 will not be published until 20 April 2016. Release dates for other official labour market statistics are available at: https://www.nomisweb.co.uk/home/release_dates.asp, accessed on 16 February 2016

Figure 11: Number and proportion (%) of jobs in London (main and secondary jobs) by broad occupational group (1-digit SOC), 2004 and 2014



Source: ONS Annual Population Survey

To explore these trends in more depth, **Table 4** outlines the change in broad occupational groups from 2004 to 2014. This table excludes secondary jobs, to provide a clearer view on the level of skills within London and the highlighted cells refer to occupational groups that have increased significantly from 2004 to 2014. The other occupations (not in highlighted cells) did not experience a statistically significant change in the number of jobs between 2004 and 2014 (at the 95% confidence level).

Table 4 also shows that overall there has been growth across all occupations over this time. The occupations which increased the most in absolute terms over this 10-year period include more senior and highly skilled roles including: professional occupations (315,000 jobs, 37% growth to 1.17 million jobs), associate professional and technical occupations, (178,000 jobs, 25% growth to 900,000 jobs), and managers, directors and senior officials (133,000 jobs, 28% growth to 606,000 jobs). All of these occupational groups grew significantly over 2004-2014. There was also significant growth among some of the smaller occupational groups, with sales and customer service occupations (which mainly include retail workers), caring, leisure and other service occupations (which mainly include people who work in health and education such as teaching assistants, carers and hospital workers), and elementary occupations increasing to 292,000 jobs (up by 16%) to 325,000 jobs (up by 37%) and to 395,000 jobs (up 31%) respectively.

Table 4: Number of jobs (thousands) in London by occupation of job holder (main job), all persons and all ages, 2004, 2009-2014 (broad occupational groups, 1-digit SOC)

Occupation	2004	2009	2010	2011	2012	2013	2014	Change (2004-14)	% Change (2004-14)
Managers, directors and senior officials	473	494	508	526	568	585	606	133	28
Professional occupations	854	991	1,022	1,101	1,112	1,168	1,169	315	37
Associate professional and technical occupations	722	819	827	822	849	845	900	178	25
Administrative and secretarial occupations	548	509	487	459	492	480	499	-49	-9
Skilled trades	319	336	305	311	308	323	346	27	8
Caring, leisure and other services	238	285	296	288	300	330	325	87	37
Sales and customer service occupations	251	261	286	254	261	288	292	41	16
Process, plant and machine operatives	179	181	175	181	178	181	193	14	8
Elementary occupations	301	335	324	363	367	354	395	94	31
Total jobs	3,885	4,211	4,229	4,304	4,434	4,554	4,724	839	22

Source: ONS Annual Population Survey. Notes: Rounded to nearest 1,000 or 1 per cent. Blue highlighted occupational groups indicate that growth between 2004 and 2014 was significant at the 95% confidence level.

To understand the types of occupations underpinning growth in these areas, we turn to look at more detailed occupational groups using the 2-digit level standard occupational classification (SOC). At this level of analysis, the ONS further classifies occupations by approximate skill level, based on the typical level and depth of specialised knowledge, qualifications and experience required to perform a role. These skill level groups are outlined in **Box 1**.

Box 1 - Classification of occupations by skill level

The ONS classifies occupations by skill level across the following four groups:

High – This skill level is normally acquired through a degree or an equivalent period of work experience. Occupations at this level are generally termed ‘professional’ or managerial positions, and are found in corporate enterprises or governments. Examples include senior government officials, financial managers, scientists, engineers, medical doctors, teachers and accountants.

Upper-middle – This skill level equates to competence acquired through post-compulsory education but not to degree level. Occupations found at this level include a variety of technical and trades occupations, and proprietors of small business. For the latter, significant work experience may be typical. Examples of occupations at this level include catering managers, building inspectors, nurses, junior police officers, electricians and plumbers.

Lower-middle – This skill level covers occupations that require the same competence acquired through compulsory education, but involve a longer period of work-related training and experience. Examples of occupations at this level include machine operation, driving, caring occupations, retailing, and clerical and secretarial occupations.

Low – This skill level equates to the competence acquired through compulsory education. Job-related competence involves knowledge of relevant health and safety regulations and may be acquired through a short period of training. Examples of occupations at this level include postal workers, hotel porters, cleaners and catering assistants.

In terms of these occupational skill levels, approximately 34 per cent of all jobs in London related to occupations which can be classed as high skilled occupations. A further 30 per cent were classed as upper-middle skilled occupations, 28 per cent as lower-middle skilled occupations and 8 per cent were classed as low skilled occupations.

Adapted from ONS, [Request for highly skilled and low skilled job statistics](#) and [SOC volume 1: structure and descriptions of unit groups](#), accessed on 01/02/16.

Table 5 shows the trends in the number of jobs by occupation in London at a more detailed occupational category (2-digit SOC). Like **Table 4** this table excludes secondary jobs, to provide a clearer view on the level of skills within London. The highlighted cells refer to occupations which have increased significantly between 2004 and 2014. The other occupations did not experience a statistically significant change in number of jobs between 2004 and 2014 (at the 95% confidence level). Overall there were significant increases in the number of jobs between 2004 and 2014 in 13 occupational categories, the largest increases include:

- Business, media and public service professionals – an increase of 135,000 jobs to 461,000 jobs (up 42%).
- Business and public service associate professionals – an increase of 104,000 jobs to 500,000 jobs (up 26%).
- Corporate managers and directors – an increase of 88,000 jobs to 445,000 jobs (up 25%).
- Elementary administration and service occupations – an increase of 82,000 jobs to 353,000 jobs (up 30%).
- Science, research, engineering and technology professionals – an increase of 80,000 jobs to 312,000 jobs (up 34%).
- Caring personal service occupations – an increase of 59,000 jobs to 213,000 jobs (up 38%).
- Teaching and educational professionals – an increase of 56,000 jobs to 222,000 jobs (up 34%).

Table 5: Number of jobs (thousands) in London by occupation of job holder (main job), all persons and all ages, 2004, 2009-2014 (detailed occupational groups, 2-digit SOC occupational category)

Occupation	Skill level	2004	2009	2010	2011	2012	2013	2014	Change (2004-14)	% Change (2004-14)
Corporate Managers and Directors	high	357	378	392	393	431	429	445	88	25
Other Managers and Proprietors	upper middle	116	115	116	133	137	156	160	45	38
Science, Research, Engineering and Technology Professionals	high	232	272	275	272	280	291	312	80	34
Health Professionals	high	131	145	151	167	159	188	174	44	33
Teaching and Educational Professionals	high	166	191	203	210	221	230	222	56	34
Business, Media and Public Service Professionals	high	325	384	394	452	453	458	461	135	42
Science, Engineering and Technology Associate Professionals	upper middle	76	68	69	72	77	83	69	-7	-9
Health and Social Care Associate Professionals	upper middle	47	52	59	69	57	61	70	23	49
Protective Service Occupations	upper middle	50	64	65	64	57	55	60	10	20
Culture, Media and Sports Occupations	upper middle	154	175	174	183	178	174	202	48	31
Business and Public Service Associate Professionals	upper middle	396	460	461	434	481	472	500	104	26
Administrative Occupations	lower middle	383	361	347	343	374	359	377	-6	-2
Secretarial and Related Occupations	lower middle	165	147	140	116	118	121	122	-42	-26
Skilled Agricultural and Related Trades	upper middle	11	17	13	11	14	12	18	7	64
Skilled Metal, Electrical and Electronic Trades	upper middle	101	101	97	86	78	82	94	7	-7
Skilled Construction and Building Trades	upper middle	123	145	121	134	133	144	142	19	15
Textiles, Printing and Other Skilled Trades	upper middle	84	73	75	80	84	86	91	7	8
Caring Personal Service Occupations	lower middle	154	195	206	200	204	222	213	59	38
Leisure, Travel and Related Personal Service Occupations	lower middle	84	90	90	88	96	108	112	28	33
Sales Occupations	lower middle	191	186	207	198	202	221	221	31	16
Customer Service Occupations	lower middle	60	75	80	56	59	68	71	11	18
Process, Plant and Machine Operatives	lower middle	51	39	49	48	42	46	46	-6	-10
Transport and Mobile Machine Drivers and Operatives	lower middle	127	143	126	133	135	135	147	20	16
Elementary Trades and Related Occupations	low	31	30	30	35	29	33	42	12	35
Elementary Administration and Service Occupations	low	271	305	293	328	338	320	353	82	30
Total jobs		3,885	4,211	4,229	4,305	4,434	4,553	4,725	839	22

Source: ONS Annual Population Survey. Notes: Rounded to nearest 1,000 or 1 per cent. This table may not sum to the 1-digit level due to rounding. Highlighted occupational groups indicate that growth between 2004 and 2014 was significant at the 95% confidence level.

Qualifications and occupations – London

The qualification data used in this section has been standardised following the UK government’s guidance on comparing different qualifications²². In this section the APS data presented includes main and secondary jobs, which means the totals are higher when compared with the previous section which described the occupational data.

Table 6 outlines that in 2014, 58 per cent of London’s workforce had higher education qualifications or above (NVQ4+), with a further 17 per cent having qualifications at GCE, A-level or equivalent. In contrast, the rest of the UK had a higher proportion of workers with A-level or equivalent qualifications (25%) and GCSE grades A*-C or equivalent (22%), but a lower level of higher education qualifications or above (39%).

Table 6: Number of jobs in London by highest qualification of job holder (main and secondary jobs), all persons and all ages, 2014 (thousands of jobs)

Highest qualification (Level)	Number of jobs in London	Proportion of jobs in London %	Number of jobs in the rest of the UK	Proportion of jobs in the rest of the UK %
Degree or equivalent	2,432	50	7,568	29
Higher education	379	8	2,679	10
GCE, A-level or equivalent	805	17	6,495	25
GCSE grades A*-C or equivalent	606	13	5,649	22
Other qualifications	424	9	2,199	8
No qualification	201	4	1,532	6
Total jobs	4,847	100	26,123	100

Source: ONS Annual Population Survey. Note: Rounded to nearest 1,000 or 1 per cent. NVQ level 1 is combined with other qualifications and trade apprenticeships are split 50:50 across GCSE and A-level equivalents.

²² For clarity ‘Degree or equivalent’ and ‘Higher education’ equates to National Vocational Qualification (NVQ) level 4 and above, ‘GCE, A-level or equivalent’ equates to NVQ level 3, GCSE grade A*-C or equivalent’ equates to NVQ level 2, and ‘other qualifications’ equates to NVQ level 1, as well as other entry level qualifications. Government guidance is available at <https://www.gov.uk/what-different-qualification-levels-mean/compare-different-qualification-levels> (Accessed on 9th February 2016).

Table 7: Number of jobs in London by occupational group and highest qualification of job holder (main and secondary jobs), all persons and all ages, 2014 (thousands of jobs)

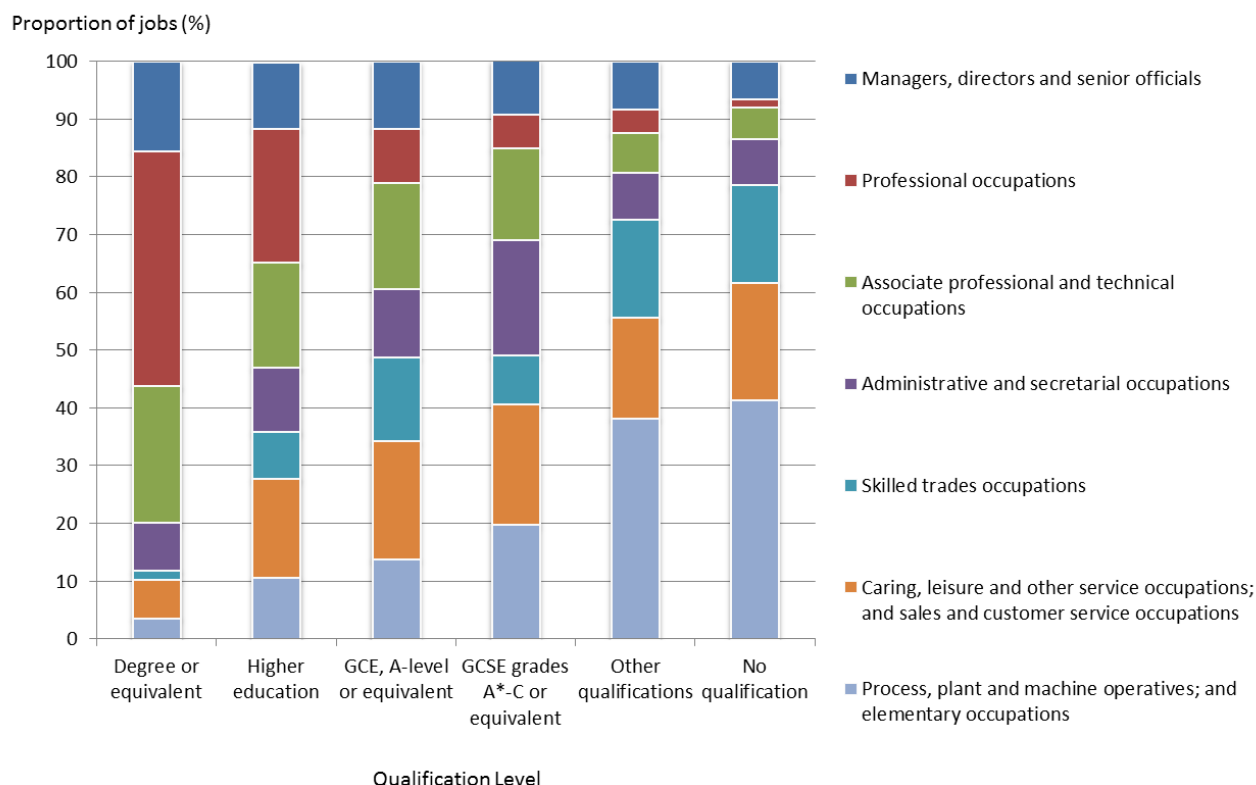
Highest qualification (Level)	Managers, directors and senior officials	Professional occupations	Associate professional and technical occupations	Admin. and secretarial occupations	Skilled trades occupations	Caring, leisure and other service; and sales and customer service occupations	Process, plant and machine operatives; and elementary occupations	Total in all occupations
Degree or equivalent	375	988	574	201	39	160	87	2,425
Higher education	43	88	69	42	31	65	40	379
GCE, A-level or equivalent	94	75	148	94	117	164	111	803
GCSE grades A*-C or equivalent	57	35	96	120	52	126	119	604
Other qualifications	35	17	29	34	72	73	161	421
No qualification	13	3	11	16	34	41	83	201
Total jobs	618	1,207	926	507	345	630	601	4,833

Source: ONS Annual Population Survey. Notes: Rounded to nearest 1,000, there is some variation in the figures of Table 5 and Table 6; this is due to the levels of non-response across the different questions of the survey. NVQ level 1 is combined with other qualifications and trade apprenticeships are split 50:50 across GCSE and A-level equivalents.

Figure 12 and **Table 7** show the number and proportion of jobs in London by qualification and occupation²³. Together they show that workers employed as managers, senior officials or in professional roles are much more likely to hold higher education qualifications or above, when compared to other occupations. Conversely, those employed in service, sales and skilled trade occupations are more likely not to hold any formal qualifications. Workers with GCE, A-level or equivalent qualifications are allocated relatively evenly across each of the occupational categories, with the exception of professional occupations. This suggests that while different types of work are more typically associated with different levels of qualification, London job holders in each occupational group are associated with a wide range of qualification pathways.

²³ This type of breakdown is unavailable for the sub-regions. This is due the small sample sizes within the APS survey leads to high margins of error at the sub-regional level.

Figure 12: Proportion of jobs (%) in London by occupational group and highest qualification of job holder, all persons and all ages, 2014



Source: ONS Annual Population Survey. Note: data on qualifications includes records for main and secondary jobs. NVQ level 1 is combined with other qualifications.

Occupational structure – East sub-region

Figure 13 provides a breakdown of the number of people employed in different occupations in workplaces based in the East sub-region in 2004 and 2014. The percentages in this figure indicate the East sub-region's proportion of total London jobs across each broad occupational group (1-digit SOC). It shows that in 2014, 137,000 jobs in the East sub-region were in professional occupations, accounting for 12 per cent of all London jobs in this category, and a further 80,000 jobs were in associate professional and technical occupations, accounting for 9 per cent of all London jobs in this occupation category.

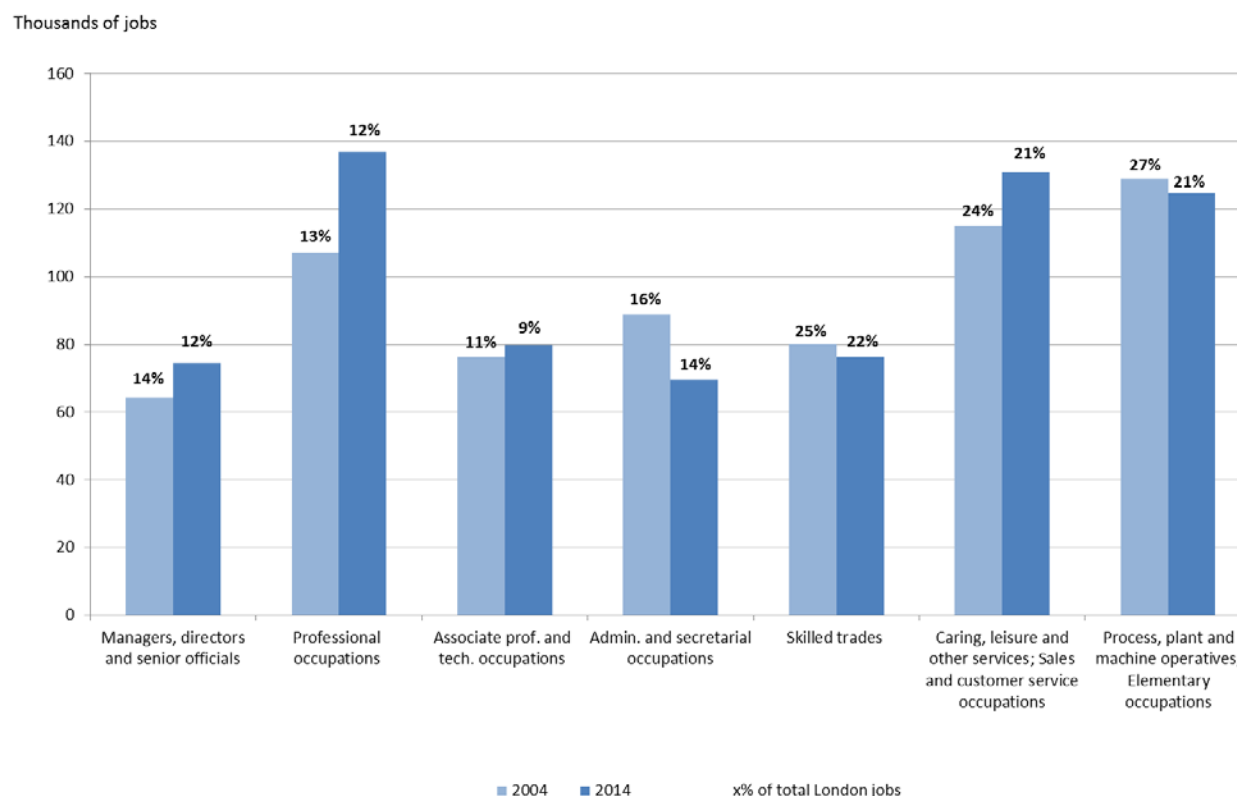
Relative to the rest of London, the East sub-region had higher proportions working in skilled trades, caring, leisure and sales workers and process, plant and machine operatives and elementary occupations (which includes transport vehicle drivers, as well as elementary roles such as security guards, storage staff, bar workers, cleaners, etc.). Respectively, these occupations accounted for approximately 21 per cent of all London jobs across these occupational categories. Broadly the occupational structure in the South East sub area is similar to the East sub-region, with slightly higher proportions of workers in professional and associate professional occupations.

Figure 13 also shows that in 2014, there were 75,000 jobs held in managerial occupations (12% of London's total jobs in this occupation), and 69,000 jobs in administrative or secretarial occupations (14% of London's total jobs in this occupation).

Overall since 2004, even though the number of professional occupations has increased, and the number of administrative and secretarial occupations has decreased, the East sub-region's overall share of London's

jobs across the different occupational categories has remained relatively stable. Plant and machine operatives; elementary occupations are an exception as the East sub-region's share of London's jobs in this occupation category has decreased by 6 percentage points from 27 per cent in 2004 to 21 per cent in 2014.

Figure 13: Number and proportions (%) of jobs in the East sub-region (and London), broad occupational groups, 2004 and 2014



Source: ONS Annual Population Survey

To examine the trends in occupations in the East sub-region in more detail, **Table 8** outlines the change in broad occupational groups from 2004 to 2014. This table excludes secondary jobs, to provide a clearer view on the level of skills within the East sub-region and the blue highlighted cells refer to occupational groups that have changed significantly from 2004 to 2014. The other occupations did not experience a statistically significant change in the number of jobs between 2004 and 2014 (at the 95% confidence level).

Table 8 also shows that like London, the number of jobs in professional occupations increased significantly from 2004 to 2014, increasing by 30,000 jobs over the period (a 28% increase). There was also a significant decrease in the number of jobs in administrative and secretarial occupations which decreased from 89,000 jobs in 2004 to 69,000 jobs in 2014 (a 22% decrease).

Table 8: Number of jobs (thousands) in the East sub-region by occupation of job holder (main job), all persons and all ages, 2004, 2009-2014 (broad occupational groups, 1-digit SOC occupational category)

Occupation	2004	2009	2010	2011	2012	2013	2014	Change (2004-14)	% Change (2004-14)
Managers, directors and senior officials	64	61	62	56	63	70	75	11	17
Professional occupations	107	118	134	134	126	146	137	30	28
Associate professional and technical occupations	76	75	75	89	81	81	80	4	5
Administrative and secretarial occupations	89	88	72	74	77	70	69	-20	-22
Skilled trades	80	82	72	68	69	70	76	-4	-5
Caring, leisure and other services	60	65	66	70	71	65	73	13	22
Sales and customer service occupations	55	55	57	56	49	56	58	3	5
Process, plant and machine operatives	58	47	45	51	51	48	51	-7	-12
Elementary occupations	71	68	63	81	77	73	74	3	4
Total jobs	660	657	647	679	664	679	692	32	5

Source: ONS Annual Population Survey. Rounded to the nearest 1,000 or 1 per cent. Highlighted occupational groups indicate that growth between 2004 and 2014 was significant at the 95% confidence level.

Table 9 shows the number of jobs by occupation in the East sub-region at a more detailed occupational category (2-digit SOC). Like **Table 8**, this table excludes secondary jobs, to provide a clearer view on the level of skills within the East sub-region. It shows that secretarial and administrative occupations had a statistically significant decrease in the number of jobs from 24,000 jobs in 2004 to 12,000 jobs in 2014 (a 50% decrease). The other occupational categories did not have statistically significant changes from 2004 to 2014; even though there was statistically significant change in professional occupations at the 1-digit occupation level (see **Table 8**).

The corresponding occupation tables for the South East sub area are included in the spreadsheet appending this report. It shows that this area did not have significant changes in the number of occupations at the 1-digit and 2-digit level from 2004 to 2014.

Table 9: Number of jobs (thousands) in the East sub-region by occupation of job holder (main job), all persons and all ages, 2004, 2009-2014 (2-digit occupational category)

Occupation	Skill level	2004	2009	2010	2011	2012	2013	2014	Change (2004-14)	% Change (2004-14)
Corporate managers and directors	High	45	44	44	35	42	43	45	0	0
Other managers and proprietors	Upper Middle	19	17	19	21	21	27	30	11	58
Science, research, engineering and technology professionals	High	20	23	22	24	21	23	21	1	5
Health professionals	High	25	24	31	33	28	37	35	10	40
Teaching and educational professionals	High	38	42	52	45	48	51	49	11	29
Business, media and public service professionals	High	24	28	30	31	29	35	31	7	29
Science, engineering and technology associate professionals	Upper Middle	9	6	6	10	10	15	9	0	0
Health and social care associate professionals	Upper Middle	11	11	11	16	13	10	11	0	0
Protective service occupations	Upper Middle	6	10	11	13	9	8	9	3	50
Culture, media and sports occupations	Upper Middle	15	12	17	20	15	17	19	4	27
Business and public service associate professionals	Upper Middle	36	37	31	30	33	31	33	-3	-8
Administrative occupations	Lower Middle	65	65	53	54	61	57	58	-7	-11
Secretarial and related occupations	Lower Middle	24	23	19	19	16	13	12	-12	-50
Skilled agricultural and related trades	Upper Middle	:	:	:	:	:	:	:	:	:
Skilled metal, electrical and electronic trades	Upper Middle	28	30	28	23	19	22	24	-4	-14
Skilled construction and building trades	Upper Middle	38	35	31	31	32	30	34	-4	-11
Textiles, printing and other skilled trades	Upper Middle	:	:	:	:	:	:	:	:	:
Caring personal service occupations	Lower Middle	45	55	57	60	57	56	59	14	31
Leisure, travel and related personal service occupations	Lower Middle	15	11	9	11	14	9	14	-1	-7
Sales occupations	Lower Middle	45	45	45	49	40	46	44	-1	-2
Customer service occupations	Lower Middle	11	10	12	7	9	10	13	2	18
Process, plant and machine operatives	Lower Middle	18	10	15	15	10	12	14	-4	-22
Transport and mobile machine drivers and operatives	Lower Middle	40	37	31	37	41	36	37	-3	-8
Elementary trades and related occupations	Low	8	8	9	9	6	9	10	2	25
Elementary administration and service occupations	Low	63	60	54	73	70	64	64	1	2
Total jobs		660	657	647	679	664	679	692	32	5

Source: ONS Annual Population Survey. Notes: Rounded to nearest 1,000 or 1 per cent. This table may not sum to the 1-digit level due to rounding. Highlighted occupational groups indicate that growth between 2004 and 2014 was significant at the 95% confidence level. : Data below publication threshold.

Qualifications – East sub-region

Table 10 shows that in 2014, approximately 34 per cent of jobs (238,000 jobs) in the East sub-region were held by an individual with a degree or equivalent qualification or above. In addition to this, 8 per cent (5,000 jobs) were held by those with higher level qualifications (such as higher diplomas, foundation degrees, etc.), 20 per cent (145,000 jobs) were held by those with qualifications at GCE, A-level or equivalent, 20 per cent (139,000 jobs) by those with qualifications at GCSE grades A*-C or equivalent, and 12 per cent (86,000 jobs) with other qualifications. 6 per cent (45,000 jobs) were held by workers without any formal qualifications.

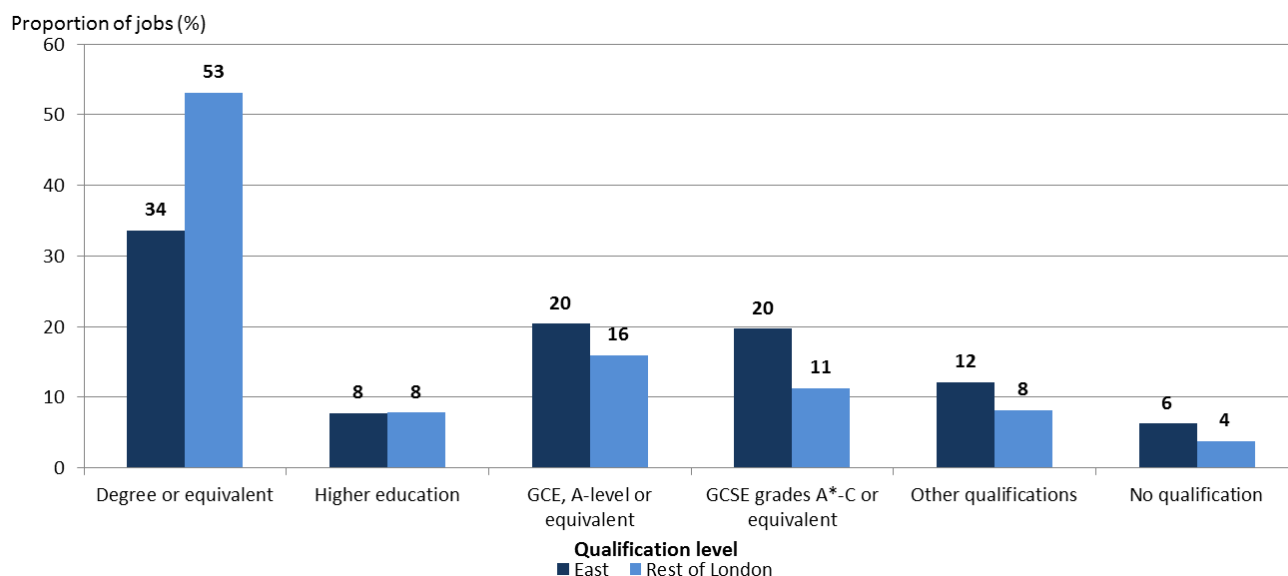
Table 10: Number of jobs in the East sub-region by highest qualification of job holder (main and secondary jobs), all persons and all ages, 2014 (thousands of jobs)

Highest qualification (Level)	Number of jobs in the East	Proportion of jobs in the East %	Number of jobs in the rest of London	Proportion of jobs in the rest of London
Degree or equivalent	238	34	2,193	53
Higher education	55	8	324	8
GCE, A-level or equivalent	145	20	659	16
GCSE grades A*-C or equivalent	139	20	466	11
Other qualifications	86	12	337	8
No qualification	45	6	156	4
Total number of jobs	708	100	4,136	100

Source: ONS Annual Population Survey. Notes: Rounded to the nearest 1,000 or 1 per cent. NVQ level 1 is combined with other qualifications.

Table 10 and **Figure 14** show that the East sub-region has a lower proportion of job holders with higher education qualifications and above compared to the rest of London (42% versus 61%). Correspondingly, the East sub-region has a higher proportion of workers with A-level or equivalent qualifications and below, particularly among GCE, A-level or equivalent (20% in East, compared to 16% in the rest of London), GCSE grades A*-C or equivalent (20% East, compared to 11% in the rest of London) and other occupations (12% in East, compared to 8% in the rest of London). Corresponding data on qualifications of job holders within the South East sub area was unavailable, as the data was not sufficiently robust at this level.

Figure 14: Proportion of jobs (%) in the East sub-region and the rest of London by highest qualification of job holder, all persons and all ages, 2014



Source: ONS Annual Population Survey, 2014

2.3 Earnings growth and occupations

This section uses data from the ONS Annual Survey of Hours and Earnings (ASHE) to provide an overview of how pay levels in London vary across different occupational categories and how these have changed over time. Due to the small sample size of the survey, ASHE earnings data broken down by occupations is not considered sufficiently reliable for detailed analysis at sub-regional level. Earnings or pay levels referred to in this section are measured in terms of median (average) gross annual pay, as this best reflects the labour employers are buying in the marketplace. This incorporates earnings of both full and part-time workers, and excludes overtime.

Earnings provide an alternative indicator of demand for skills and in the view of the UK Migration Advisory Committee serve as “arguably the best single indicator of the value of skills in an open labour market”²⁴. In other words, we would expect the demand for specialist skills to be reflected in the wage on offer. Information on the level and change in average earnings may also provide a signal to learners and jobseekers, (as well as their parents and career advisors) of increased rewards associated with different types of work. Relatively higher earnings should boost the number of people willing and able to work in a particular role. This is because, as wages rise, other workers will be attracted to enter the industry or switch into the occupation, while those without work (including those in education) will also respond to the incentive of higher rewards.

To explore the relationship between earnings and occupations, a previous publication by the Centre for Economic and Social Inclusion (CESI), used ASHE earnings data to examine the change in annual earnings across different occupations between 2011 and 2014²⁵. This provides an overview of the level and change in median pay for London workers in the 2011-2014 periods alongside median pay levels in April 2014. Across

²⁴ Source: Migration Advisory Committee, ‘[MAC review of Tier 2 migration](#)’, January 2016.

²⁵ CESI, [London Labour Demand – Understanding the demand for skills in London’s Labour Market](#), December 2015, Report for the London Enterprise Panel, accessed on 12/01/16.

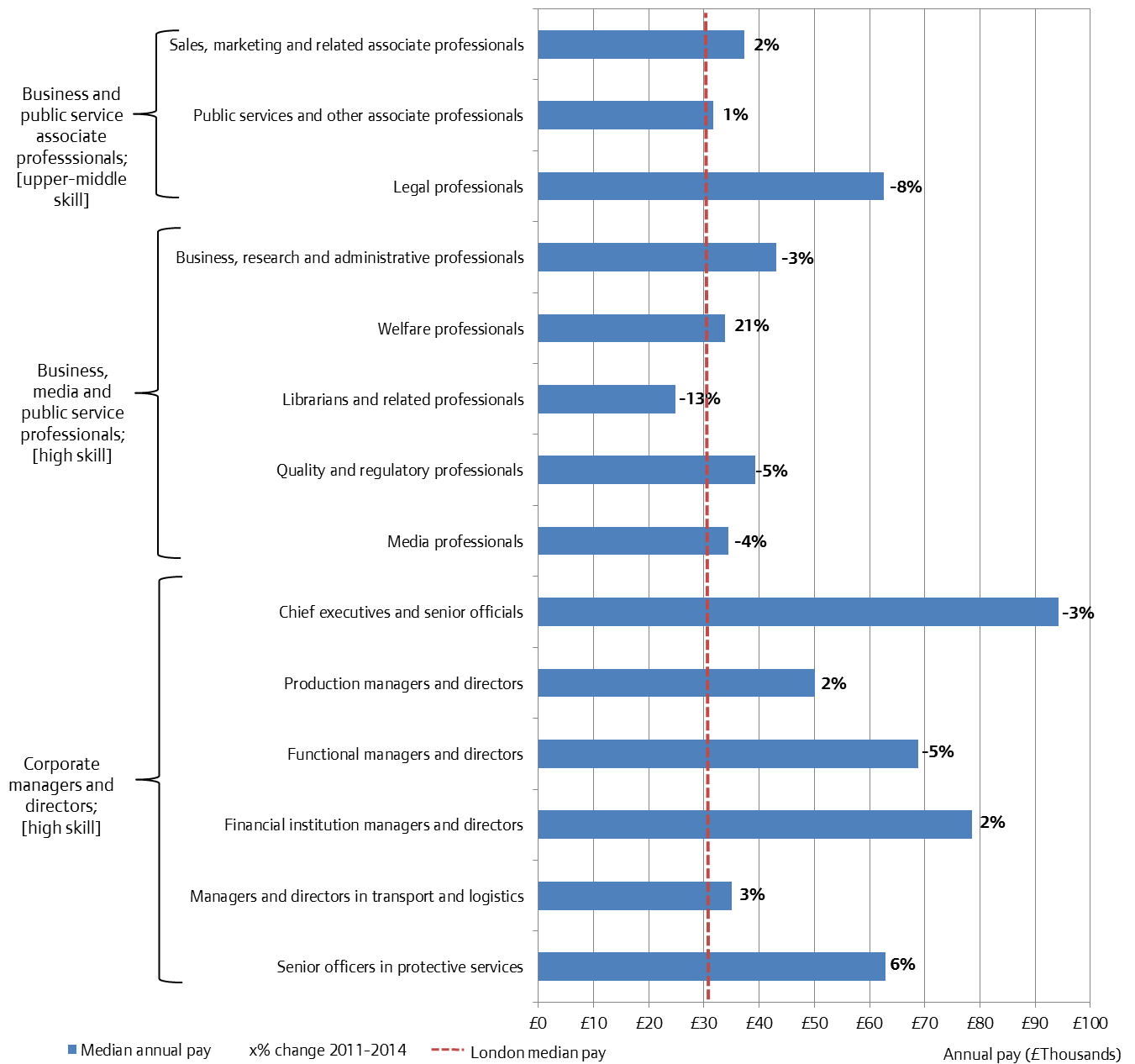
all occupations, median pay levels in London were around £30,000 as of April 2014²⁶. **Figure 15** and **Figure 16** show that almost all of the occupations that make up the three largest 2-digit occupations in London (as identified in section 2.2) have an annual pay level above London's median pay. In contrast, the pay levels across the fourth and fifth largest occupations in London are below the London average. This could be due to the differences in skill level between these occupations, as the three largest occupations are all of upper-middle to high skill level, while the fourth and fifth largest occupations are at relatively lower skill levels.

Figure 15 and **Figure 16** also show that within the largest occupational groups, median annual pay levels did not increase substantially between 2011 and 2014. There are however several exceptions to this including: welfare professionals in London, whose annual earnings increased by an estimated 21 per cent (an increase of £5,700), elementary administration occupations (up 10%; £2,300), other elementary service occupations (an increase of 8%; or £800), senior officers in protective services (up 6%; £3,800) and elementary security occupations (up 5%; £1,000).

The previous analysis of occupations at the London level also show that the number of jobs across all five of the largest 2-digit occupational groups increased over 2011 to 2014. In particular, business and public service associate professionals, and corporate managers and directors increased significantly by 66,000 jobs and 52,000 jobs respectively.

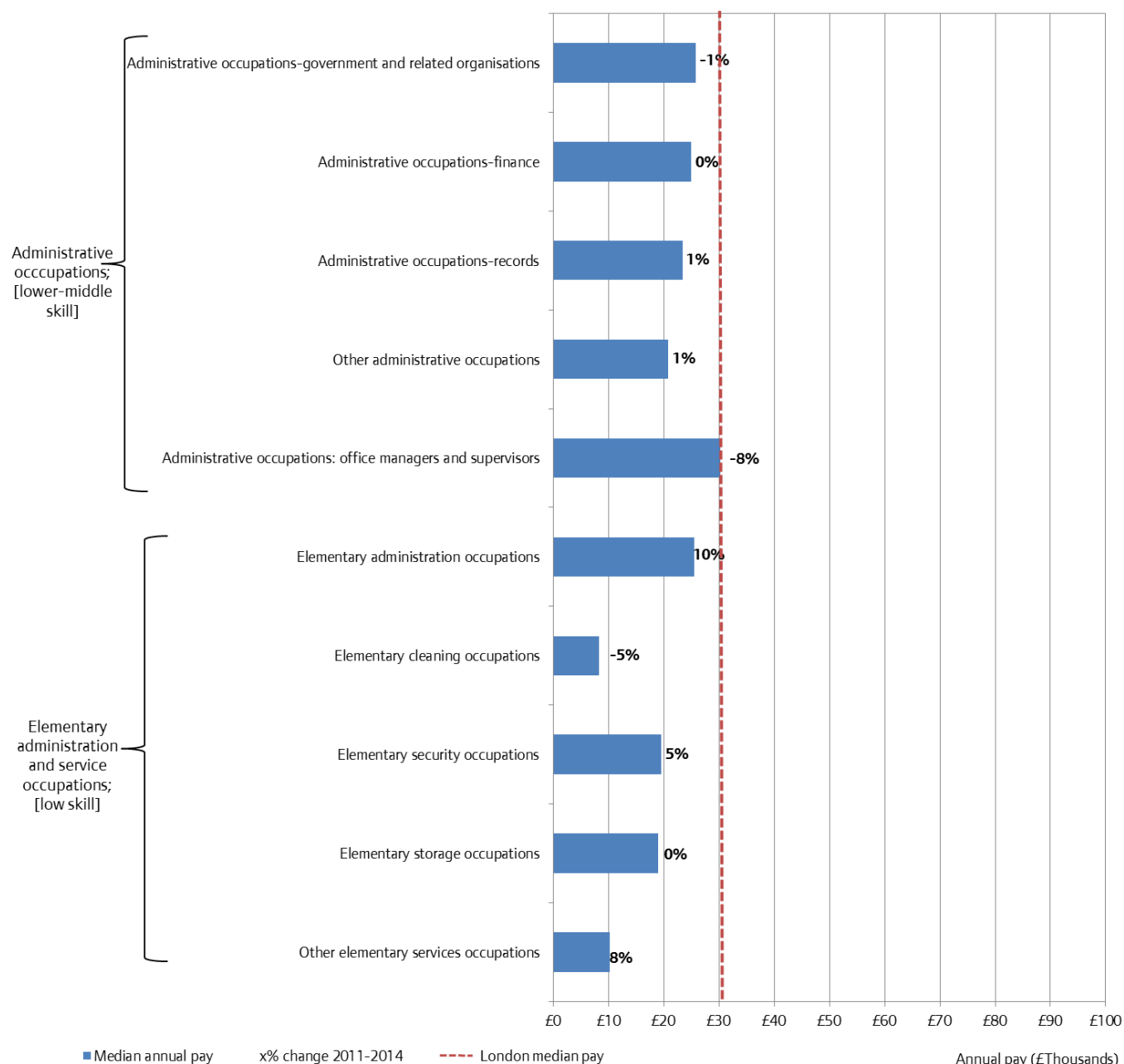
²⁶ The equivalent median earnings across the boroughs in the East sub-region ranged from approximately £25,000 in Enfield to £33,000 in Barking and Dagenham in April 2014.

Figure 15: Gross annual pay level (2014) and percentage change (2011-2014) for first, second and third largest 2-digit occupational groups in London



Source: ONS Annual Survey of Hours and Earnings (ASHE) via CESI.

Figure 16: Gross annual pay level (2014) and percentage change (2011-2014) for fourth and fifth largest 2-digit occupational groups in London



Source: ONS Annual Survey of Hours and Earnings (ASHE) via CESI.

Within ASHE, the ONS also publish employment numbers with the caveat that they are 'for indicative purposes only and should not be considered an accurate estimate of employee job counts'. However, the 2-digit and 3-digit SOC estimates for London generally have low coefficients of variation, which indicate reasonably reliable data, which can help to illustrate general trends at that level of occupational detail.

Figure 17 reproduces a chart produced by the Centre for Economic and Social Inclusion (CESI) from the same report that presented the analysis for the two previous gross annual pay charts²⁷. This figure uses

²⁷ CESI, [London Labour Demand – Understanding the demand for skills in London's Labour Market](#), December 2015, Report for the London Enterprise Panel, accessed on 12/01/16.

ASHE data to show the change in estimated employment levels (horizontal axis) and annual pay (vertical axis) across all 3-digit occupations in London from 2011-2014. The size of the bubbles refer to the level of employment in each occupation in thousands of jobs, while the colours indicate the general skill level of the occupation from the ONS skill classification (higher levels of skill are darker blue, while relatively lower levels of skill are lighter blue).

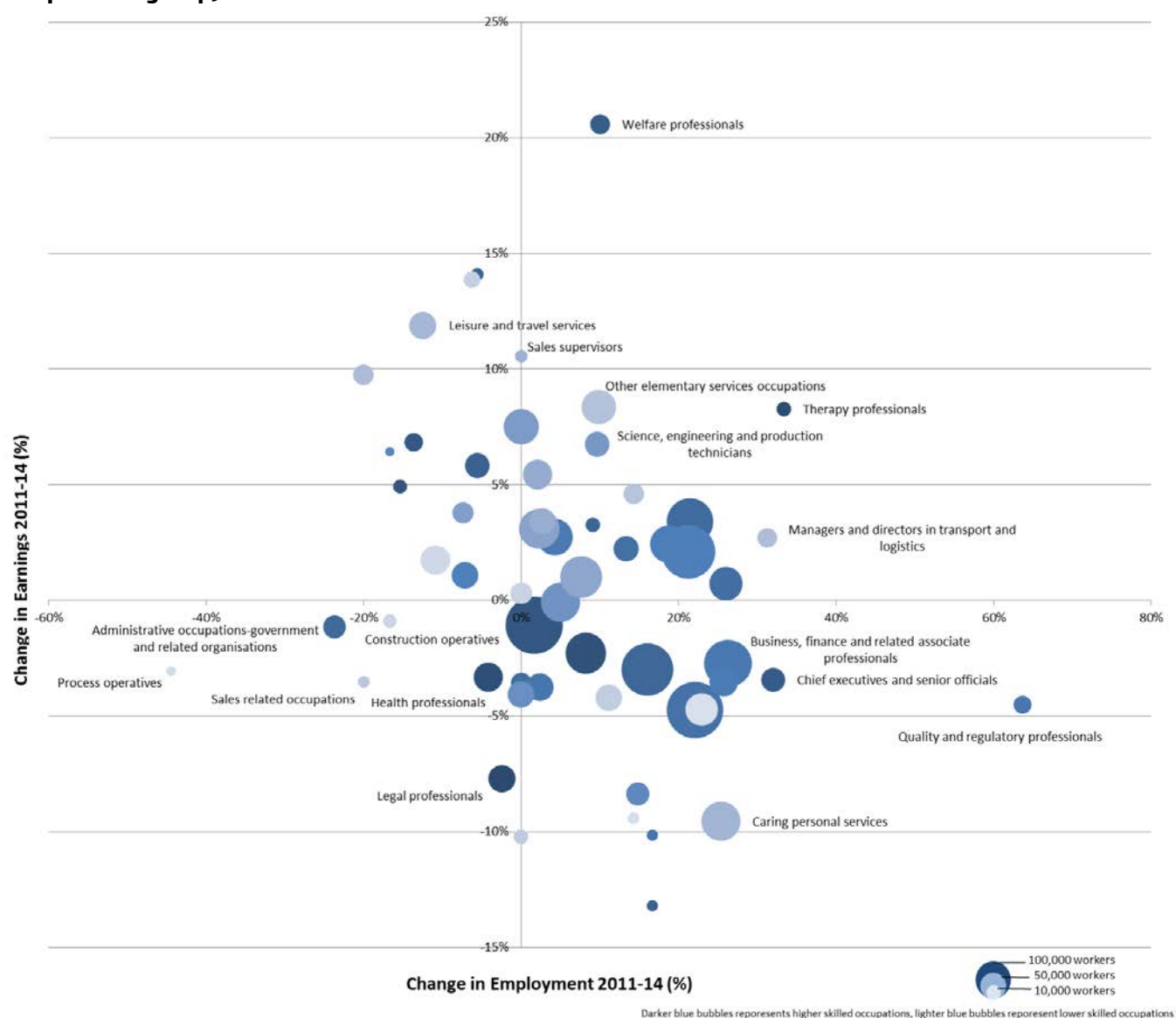
The occupations in the top right quadrant have therefore increased in terms of both job numbers and annual pay in the 2011 to 2014 period. This category includes sales supervisors and other elementary services occupations. CESI however notes that earnings growth in these occupations could have been due to the increases in the national minimum wage, rather than as a result of competitive pressures arising from increased demand for labour.

The lower right hand quadrant includes occupations which experienced growth in jobs numbers over this time period, without a corresponding increase in pay. These include a range of professional occupations such as quality and regulatory professionals, and finance and related professionals, as well as chief executives and senior officials, and caring and personal services. CESI note that the absence of pay rises in this quadrant may be symptomatic of an 'over-supply' of workers moving into growing occupations, or as a result of the public sector holding down pay for non-market reasons. It is also however possible that this reflects compositional effects resulting from possible shifts towards more part-time work or a younger workforce with relatively lower initial earnings, which thereby holds down average wages.

In contrast, the bottom left hand quadrant includes occupations with declining employment and annual pay over the period. The occupations in this quadrant include process operatives, construction operatives, sales related occupations, legal professionals and health professionals. The top left quadrant shows declining numbers with increasing pay, and includes leisure and travel services. Falling numbers in a particular occupation can provide an indicator of demand for the different types of work due to dynamic changes in the labour market, including technical changes, as well as changes in general economic activity. What distinguishes the lower left quadrant is the absence of an employer pay response, which CESI notes could be due to a structural fall in demand for such workers, or a result of employers not being able or willing to respond to any recruitment needs through increases in pay.

Overall, there is therefore a complex picture of changes in average earnings across specific occupations in London, and it is difficult to untangle the drivers of observed changes in earnings and detect a clear relationship to the demand for particular skills-sets based on this information alone.

Figure 17: Occupations by employment change and earnings change, London, 2011-2014 (3-digit occupational group)



Source: ONS Annual Survey of Hours and Earnings (ASHE) via CESI

Job vacancies

Employer skills survey - London

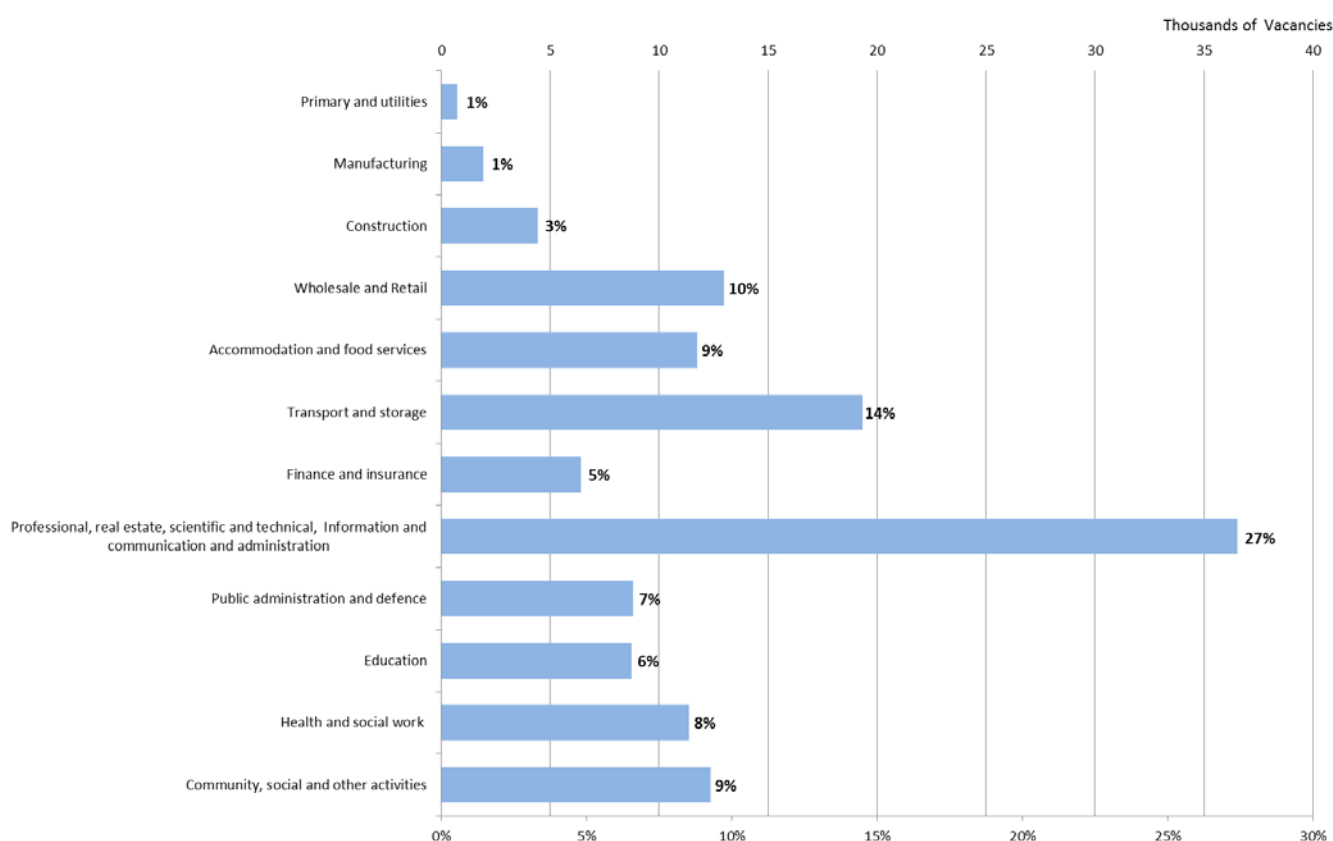
An alternative set of indicators on the types of job opportunities available and the skills that are in demand, is available from employer skills surveys that seek to assess employers' perceptions and experience of their existing workforce skills, their skills needs and details of the vacancies held. This section reports on the results of the UK Commission for Employment and Skills (UKCES) employer skills survey²⁸, which aims at understanding the overall level of skills (as well depth of skill shortages) in the UK economy. The results presented relate to the most recently published results based on 2013 data, as regional results from the 2015 survey will not be released until late March 2016. The results presented in this section are rounded to the nearest thousand, or the nearest 1 per cent.

²⁸ UKCES, 2013, [Employer Skills Survey](#)

The level of vacancies can provide an indicator of growing demand for particular types of work at a particular moment in time, though a high level of vacancies may also reflect a high level of labour market turnover or ‘churn’ as a result of employees leaving their current post, in need of replacement²⁹. Depending on the timing of the survey, it may also capture (or fail to reflect) seasonal employment patterns in industries which increase recruitment levels at peak times every year. Based on a sample of over 10,000 employers based in London³⁰, the 2013 UKCES Employer Skills Survey reported just over 135,000 vacancies in London in 2013.

Figure 18 shows that 27 per cent (37,000) of all London vacancies were in the UKCES broad sector ‘business services’ (comprised of professional, real estate, scientific and technical, information and communication and administration). A further 14 per cent (19,000) were in transport and storage, and 10 per cent (13,000) in wholesale and retail. The level of vacancies in each sector broadly corresponds with the size of that industry in terms of the number of jobs in London (as shown in section 2.1). The only exception is in transport and storage, which makes up 14 per cent of all vacancies, but only five per cent of jobs in London. This could either be an indicator of growing demand at the time of the survey, or due to a higher level of turnover in this industry.

Figure 18: Number and proportion (%) of total vacancies in London by industry, 2013



Source: UKCES Employer Skills Survey, 2013

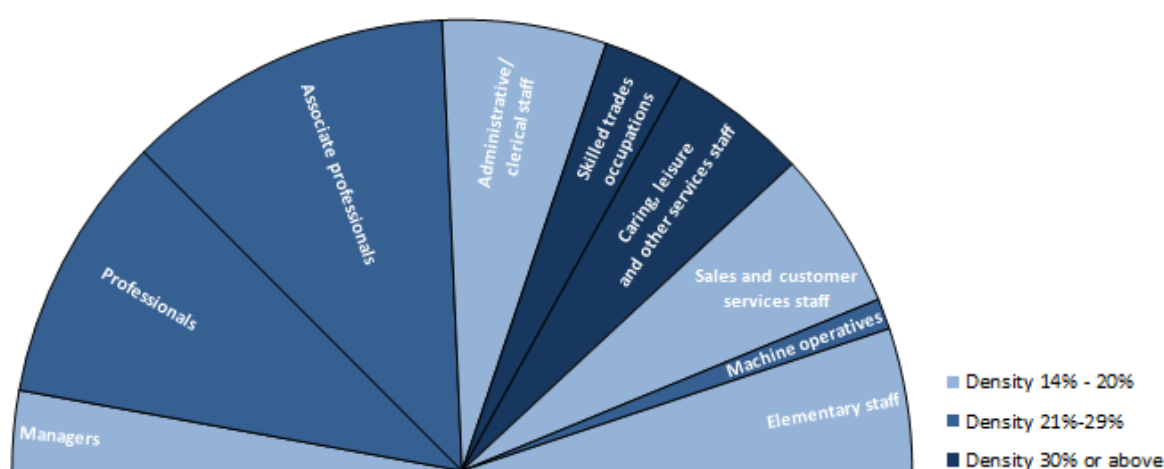
²⁹ Some people will retire, some will choose to leave London (and not commute back in), some will take time off work to have children, some will shift from one occupation or sector to another, some will fall long-term sick and some will die.

³⁰ The scope of the survey included all businesses with at least two people working at them (regardless of the ownership structure). The sampling unit was the establishment, rather than the head office, as the UKCES identified that this is the level at which skill shortages are both experienced and managed. For further technical information, see the [UKCES 2013 Technical Report](#), accessed on 12/01/16.

Figure 19 shows the proportions of vacancy by occupation as well as the density of skills shortages in different occupations. In this survey, skills shortage vacancies are caused by employers being unable to find people with the relevant skills, qualifications or experience for the role. Reported difficulties in filling these vacancies are often seen as an indicator of unmet demand for skills. Such employer reports should however be treated with a degree of caution as there are a number of reasons why employers may not be able to attract the quality of applicants they seek, including (among other things) insufficient remuneration, anti-social working hours, an unattractive working environment, or perceptions thereof.

Overall, **Figure 19** shows the highest proportion of job vacancies were in 'associate professional' (24%) and 'professional' (19%) occupations, which are also the largest occupations in London in terms of overall number of jobs. The highest densities of skills shortage vacancies (shaded in dark blue) were in skilled trades, and caring, leisure and other service staff.

Figure 19: Vacancies by occupation and density of skills shortages, London, 2013

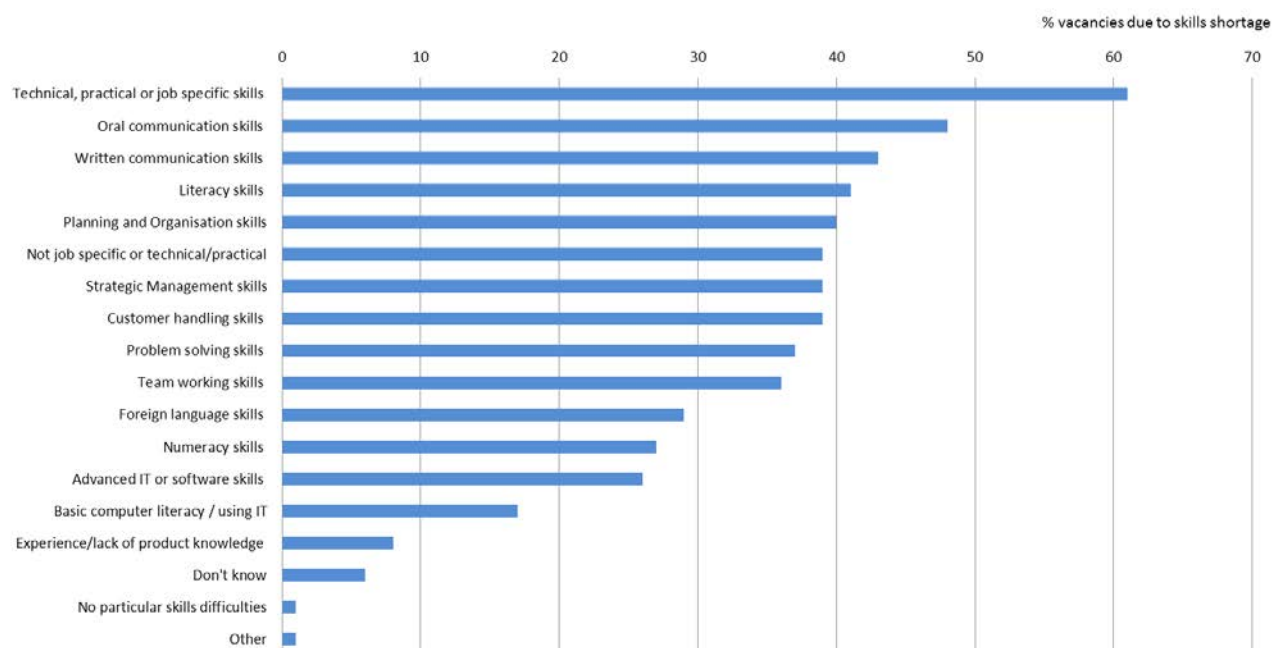


Source: UKCES Employer Skills Survey, 2013. Base: All establishments with vacancies. Notes: the density of skills shortages is measured as the number of skill-shortage vacancies as a proportion of all vacancies in that occupational group.

An overview of the types of skills shortages reported by London-based employers is provided in **Figure 20**. This indicates that the most common skill shortages related to technical, practical or job-specific skills (61 per cent)³¹. Employers also reported shortages in oral and written communication skills (48% and 43% respectively) and literacy skills (41%).

³¹ Following an NIESR review, the skills descriptors have been expanded in the 2015 employer skills survey, which might provide further information on the nature of skills that are reported to be lacking. For further information see: [UKES 2015 technical report](#), January 2016, p.13-16

Figure 20: Skills found difficult to obtain from applicants (all skill shortage vacancies), London, 2013



Source: UKCES Employer Skills Survey (ESS), 2013

Some London employers also experienced a lack of proficiency within their existing workforce, known as skills gaps. While 5 per cent of establishments (14,000) in London reported having a skills shortage vacancy in 2013, skills gaps were more widespread; 15 per cent (37,000) of employers suffered from skills gaps within their existing workforce. In total, there are almost 240,000 cases where London employers considered existing staff not to be fully proficient in their roles (equivalent to almost 6% of all those employed). As a proportion of all employment, these skills gaps were most prevalent in elementary, sales and customer service occupations, which together make up a relatively high proportion of London's jobs (25% of all jobs).

Alongside reported skills gaps and skills shortages, there is also evidence to suggest that there is a relative lack of employer engagement and investment in skills training across the UK, and in London in particular. For example, a higher proportion of employers in London (36%) did not fund or arrange any training for staff in the 12 months to mid-2013 (compared to 34% in the rest of England). Evidence from ESS 2013 also suggests that employer investment in training had been in decline. In 2012/13, London employers invested an estimated £7.1 billion in workforce training, down 30 per cent from £10.1 billion in 2010/11 (compared to a 5% fall in employer investment in training for the UK as a whole – from £45.3 billion to £42.9 billion)³².

Employer skills survey – East sub-region

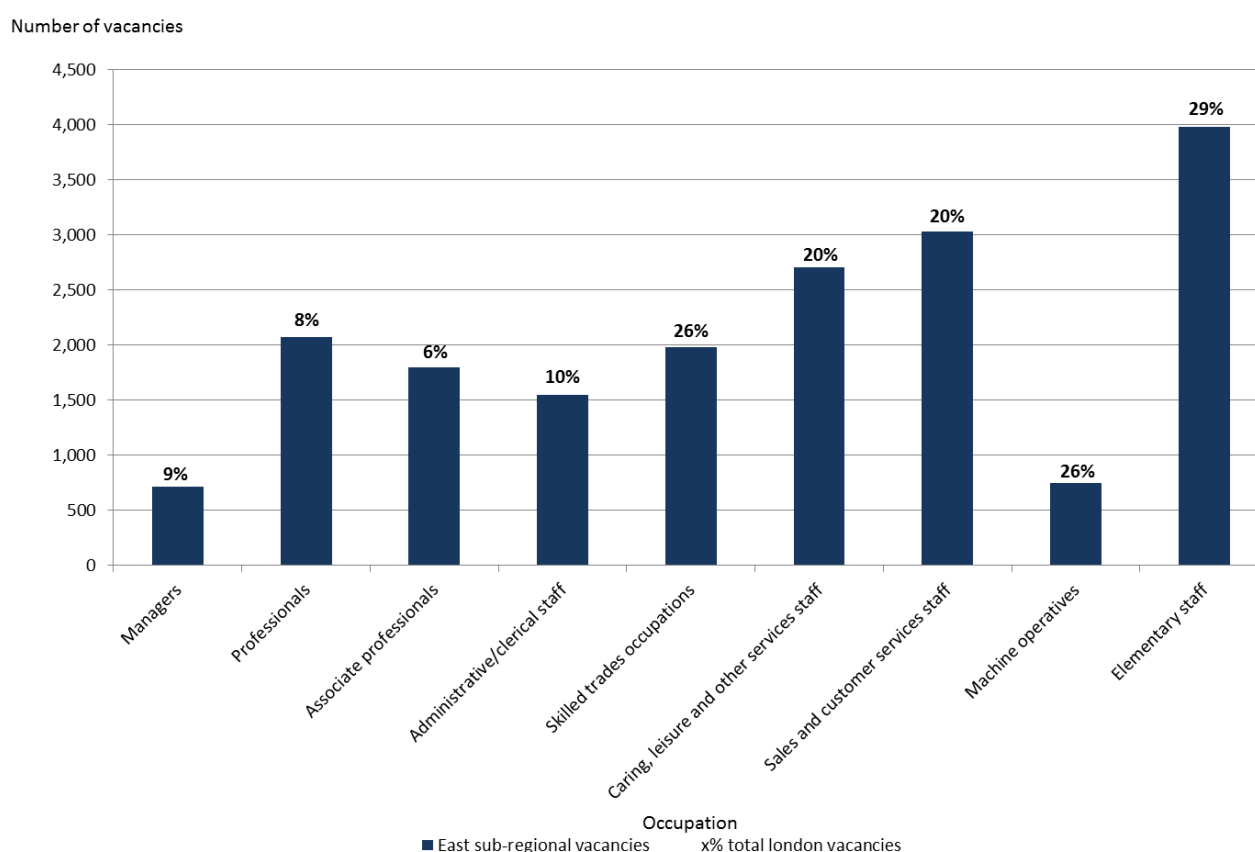
The employer skills survey has coverage at borough level on the number and proportion of vacancies by occupation. This can be aggregated to show the overall level of vacancies within the East sub-region. The data in this section is rounded to the nearest 100, as the numbers of vacancies are relatively small compared to the other data presented in this report.

³² Note: UKCES report that this fall in total training expenditure is mainly driven by a fall in expenditure among large employers with 100 or more staff, and employers in public administration and in education. These figures include estimates of the cost of employer time. Particular challenges in London are that labour costs of trainees tend to be higher, and that employers find it hard to find time to organise training. Sources: UKCES Employer Skills Survey 2013, January 2014, and London training investment figures have been provided by the UKCES.

Overall, at the time of the UKCES survey in 2013, there were a total of 18,600 vacancies reported in the East sub-region, which accounts for 14 per cent of total London vacancies. 6,300 of these vacancies were in South East sub area. **Figure 21** shows that unlike London, the highest levels of total vacancies in the East sub-region were in the elementary occupations (29% of total London vacancies in the occupation, 4,000 vacancies). There were also high vacancy rates among sales and customer services staff (20% of total London vacancies, 3,000 vacancies) and caring, leisure and other services staff (20% of total London vacancies in the occupation, 2,700 vacancies). Together these three sectors account for 52 per cent of all vacancies in the East sub-region.

There were 6,300 vacancies within the South East sub area at the time of the UKCES survey, the majority of these were in caring, leisure and other services (1,300 vacancies), skilled trades (1,100 vacancies and professionals (1,000 vacancies). Together these three categories accounted for 56 per cent of all vacancies in the South East sub area reported in the skills survey.

Figure 21: Number and proportions (%) of total vacancies in the East sub-region by occupation, 2013



Source: UKCES Employer Skills Survey, 2013

3 Short-term Economic Forecasts and Labour Market Projections

Summary – London and the East sub-region

- GLA Economics publishes London's Economic Outlook (LEO) every six months. This provides a set of economic forecasts aimed to assist with short to medium term planning and policy decisions. The November 2015 release forecasts that workforce jobs in London will increase by 1.2 per cent in 2016 and 0.7 per cent in 2017. This growth is forecast to be predominantly driven by increases in business and administration services, retail, wholesale, accommodation and food services, and construction.
- GLA Economics also publishes labour market projections to provide a broad indication of its possible long-term future growth path. These suggest that workforce jobs in London are likely to increase from 5.5 million in 2014 to 6.4 million in 2036, an annual average growth rate of 0.69 per cent over the period.
- Total employment in the East sub-region is projected to increase from 852,000 jobs in 2014 to 929,000 jobs in 2036, equivalent to an average increase of 3,500 jobs per year or 0.39 per cent per year over the period.
- The growth at the London level is projected to be underpinned by substantial increases in professional, real estate, scientific and technical services, administrative and support services, accommodation and food services, and information and communication. Growth in these sectors is also likely to occur within the East Sub-region.
- Other relatively large sectors in the East sub-region, such health, retail, and education are also projected to grow in response to increases in the population of London. Although, it is unclear to what extent this growth will be concentrated geographically in the East sub-region.
- By 2036 the number of jobs in professional occupations (irrespective of sector) in London is projected to increase by 504,000 from 1.2 to 1.7 million jobs. The number of jobs in the managers, directors and senior officials category is also expected to increase by 203,000 jobs by 2036, with increases also in skilled trades (up 166,000 jobs), process, plant and machine operatives and elementary occupations (up 131,000 jobs), and associate professional and technical occupations (up 63,000 jobs).
- In contrast, the number of jobs in caring, leisure and other service occupations; and sales and customer service occupations is projected to remain relatively stable, while administrative and secretarial occupations are projected to decrease by 319,000 jobs.
- In line with the continued shift towards professional service sectors and professional occupations, the number of jobs associated with degree level, and higher level qualifications is projected to increase substantially by 2036. The number of jobs associated with other qualification (including NVQ level 1) is also expected to increase. In contrast, the number of jobs associated with GCE, A-level or equivalent, GCSE A*-C and no qualifications is projected to decrease.
- Even though the projections suggest there will be a high level of structural change in London's labour market in the future, GLA Economics estimate that more than half a million people leave their occupation each year, and projects that this will increase in the future. There is a potentially significant level of training and skills requirements associated with the need to replace those leaving their roles.

This section presents the findings of short-term economic forecasts and the long term labour market projections produced by GLA Economics. This analysis will assist with the forward planning aspects of the Further Education area reviews by providing some context around the economic trends that are most likely to arise over the medium to long term.

3.1 Short-term economic forecasts for London

GLA Economics publishes a report called London's Economic Outlook (LEO) every six months, which is a set of economic forecasts aimed to assist with short to medium term planning and policy decisions. The forecasts themselves are based on an in-house model built by Volterra Consulting Limited, and are presented below. In addition to the GLA forecasts, London's Economic Outlook also presents a 'consensus' forecast from a review of other independent economic forecasters, and is available in the main LEO report³³.

As with any economic forecast, model and data uncertainty as well as unpredictable events contribute to errors in forecasting. While GLA Economics takes steps to minimise these sources of error, these forecasts should be seen as an indication of what is in GLA Economics' view given the information available, most likely to happen, not what will definitely happen.

GLA Economics forecasts that overall growth in workforce jobs in London (employee jobs and self-employed) will increase from 5.65 million in 2015³⁴ to 5.75 million in 2017. This increase will be driven by an overall increase in workforce jobs of 1.2 per cent in 2016 and 0.7 per cent in 2017.

Figure 21 shows that business and administration services³⁵, is forecast to grow by 2.5 per cent in 2016 and 1.5 per cent in 2017, adding 78,000 workforce jobs. Retail, wholesale, accommodation and food services is expected to grow by 37,000 workforce jobs (growing by 2% in 2016 and 1.4% in 2017). Other sectors that are also expected to grow between 2015-2017 include construction (14,000 workforce jobs), transport and storage (5,500 jobs) and financial services (1,600 workforce jobs).

In contrast, **Figure 22** also shows that other public and private services³⁶ are forecast to decrease by 19,000 workforce jobs to 1,503,000 jobs. This decrease is forecast to occur from a 1.0 per cent decrease in 2016 and a 0.2 per cent decrease in 2017. Manufacturing is also expected to experience a very small decrease by 300 workforce jobs.

Overall, this forecast suggests that business and administrative services; retail, wholesale, accommodation and food services, construction and transport and storage are likely to be a substantial source of growth in the medium term. On the other hand, workforce jobs in other public and private services and manufacturing are forecast to decrease from 2015 to 2017. However, due to its combined size, other public and private services sector is likely to be a source of replacement demand, even if there is an absolute decrease in workforce jobs.

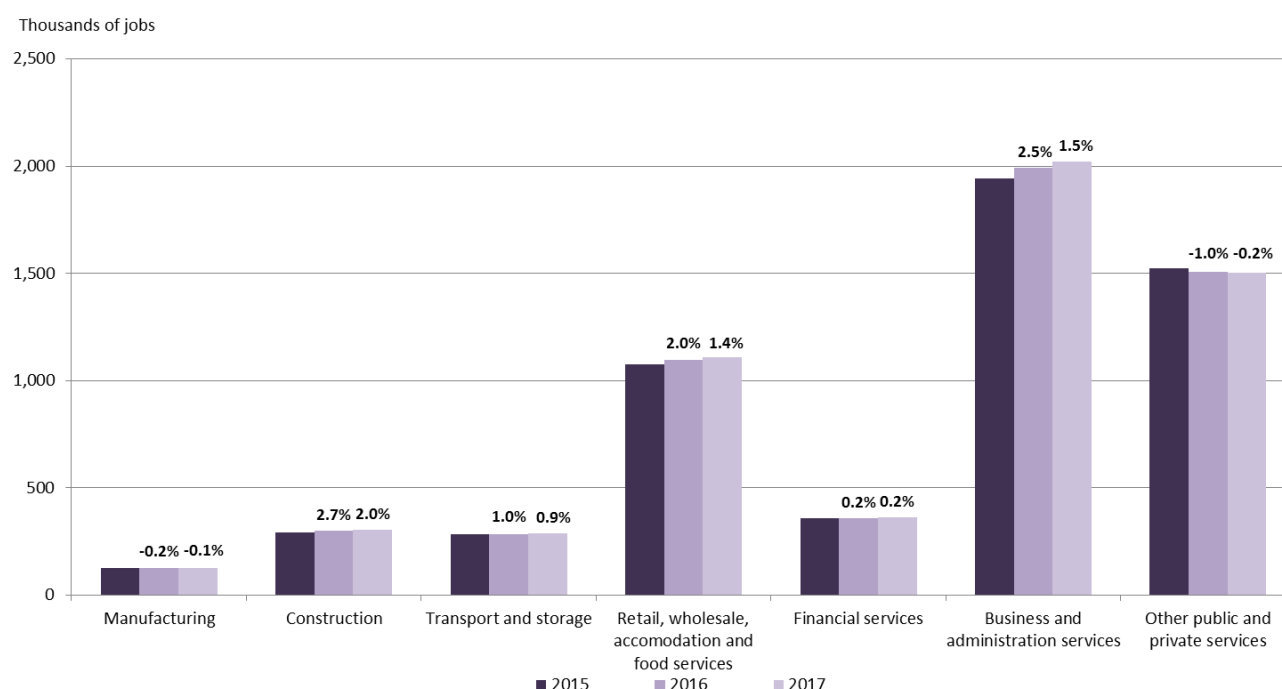
³³ GLA Economics, November 2015, [London's Economic Outlook: Autumn 2015, The GLA's medium-term planning projections](#)

³⁴ Since the publication of London's Economic Outlook, the overall level of workforce jobs in 2015 has been revised down to 5.58 million. The forecast is therefore subject to revision as a result. The next LEO forecast is due for release in May 2016.

³⁵ This sector includes the professional, real estate, scientific and technical services, information and communication, and administration and support services.

³⁶ This sector includes the public administration, education, health, arts, entertainment and recreation and other services industries.

Figure 22: Forecast number and annual percentage growth (%) of workforce jobs in London, by sector, 2015-2017



Source: GLA Economics, *London Economic Outlook*, November 2015

3.2 Labour Market Projections

GLA Economics publishes labour market projections at both the London and Borough level to provide a description of the current structure of London and a broad indication of its possible long-term future growth path. This projection does not take into account cyclical fluctuations or other economic effects which may affect London's growth over the short to medium term.

GLA Economics will publish a full revision of employment projections around mid-2016, because of this; the projections presented in this section should be considered provisional estimates. These updated projections will extend to 2041. The projections presented here are drawn from two previous reports, including the recent 2015 projections update which is focused towards broad labour market trends³⁷, as well as the more detailed 2013 labour market projections report which incorporates projections on occupations, qualifications and replacement demand³⁸. The 2013 projections cover the period from 2011 to 2036, while the 2015 projections cover the period 2014 to 2036.

These employment projections are based on a number of simplifying assumptions. Most notably, they look at the historical relationship between economic output and employment and project this forward into the future. In short, employment projections assume that past economic trends are a reasonable indicator of future changes in the economy. These projections also assume that output will increase by an average of 2.5 per cent per annum over the 25 year period. A more detailed description of how these projections are constructed is available in the methodology section of the 2015 and 2013 labour market projection reports³⁷. Overall, while these projections provide a broad indication of how London's economy may be structured in the future; they should not be interpreted as an exact forecast of the path of future growth.

³⁷ 2015 projections - GLA Economics, July 2015, [Updated employment projections for London and trend-based projections by borough](#), Working paper 67.

³⁸ 2013 projections - GLA Economics, April 2013, [London labour market projections](#).

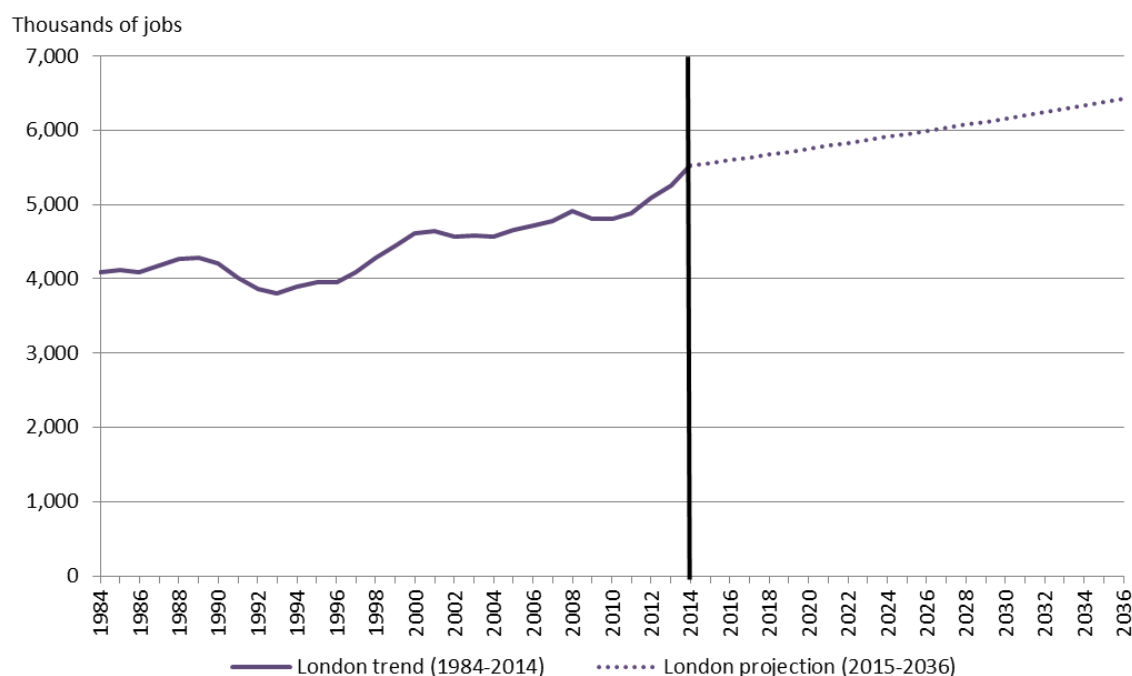
The baseline data for the total employment projections is the ONS workforce jobs series which includes both employee jobs and self-employed workers, and corresponds to the workforce jobs measure presented in section 2.1 of this report. The time period these projections are based on is 1984-2014.

The data on occupations and qualifications is drawn mainly from the Annual Population Survey and corresponds to the data presented in section 2.2 of this report. The time period these projections are based on is 2001-2011.

London labour market projections – total workforce jobs and industry structure

Figure 23 shows the total workforce jobs (employee jobs and self-employed) projection for London. It indicates that total workforce jobs at the London level are projected to increase from 5.5 million in 2014 to 6.4 million in 2036, an annual average growth rate of 0.69 per cent and equivalent to 41,000 jobs per year.

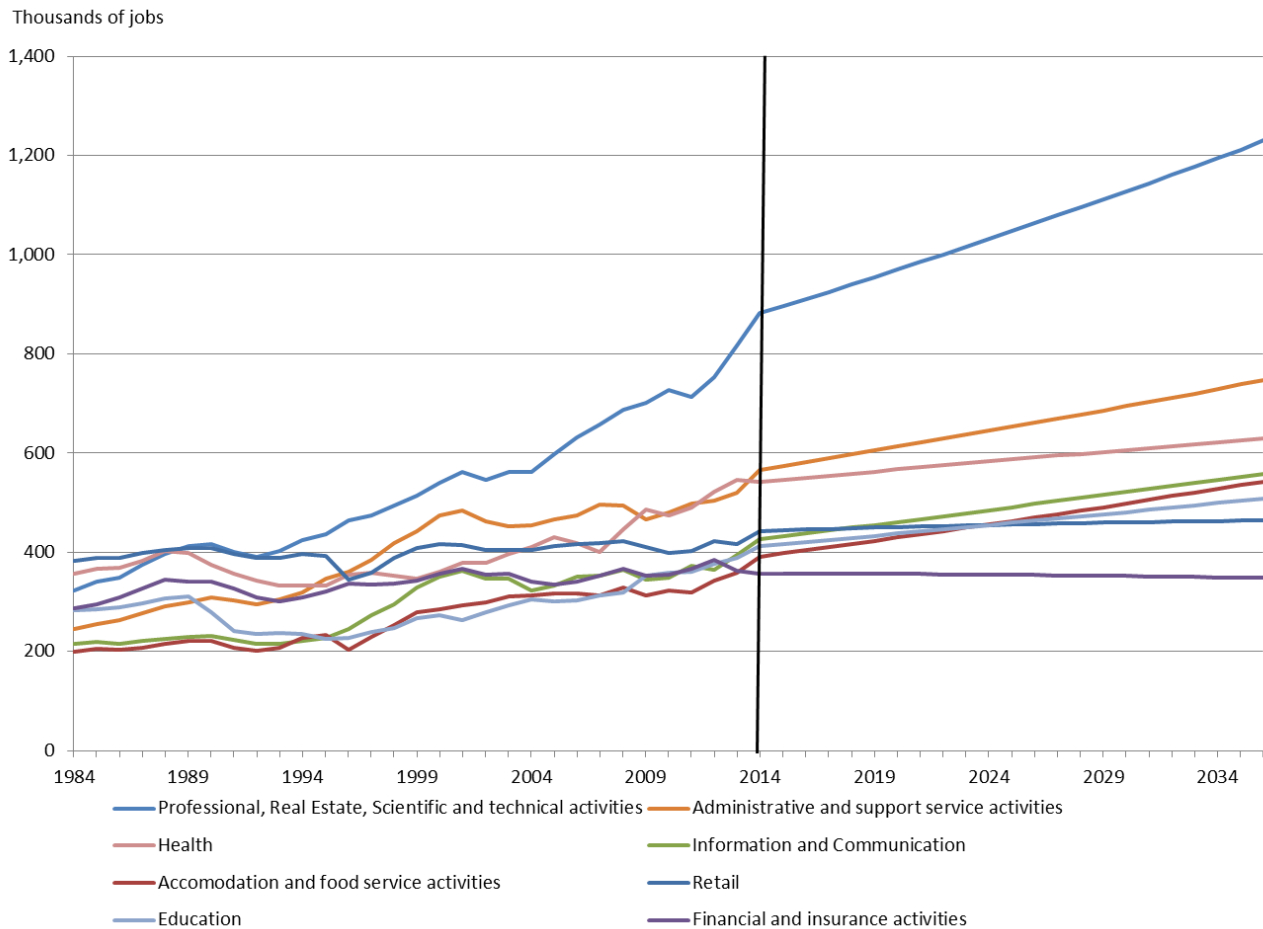
Figure 23: Historic and projected workforce jobs in London (thousands), 1984-2036



Source: GLA Economics, July 2015, updated employment projections for London and trend-based projections by borough

Figure 24 outlines the projected employment growth for London's largest industry sectors. It shows that that professional, real estate, scientific and technical services sector is projected to grow by 334,000 jobs to reach 1.23 million jobs in 2036 (an annual average increase of 1.5% per year). Other sectors that are projected to grow over this time period include administrative and support services (173,000 jobs, a 1.3% increase per year), accommodation and food services (144,000 jobs, a 1.5% increase per year), and information and communications (126,000 jobs, a 1.2% increase per year). Smaller increases in employment are projected in the education, health and retail sectors. Employment in the financial and insurance activities is expected to remain relatively stable from 2015-2036, with a small decrease of 9,000 jobs.

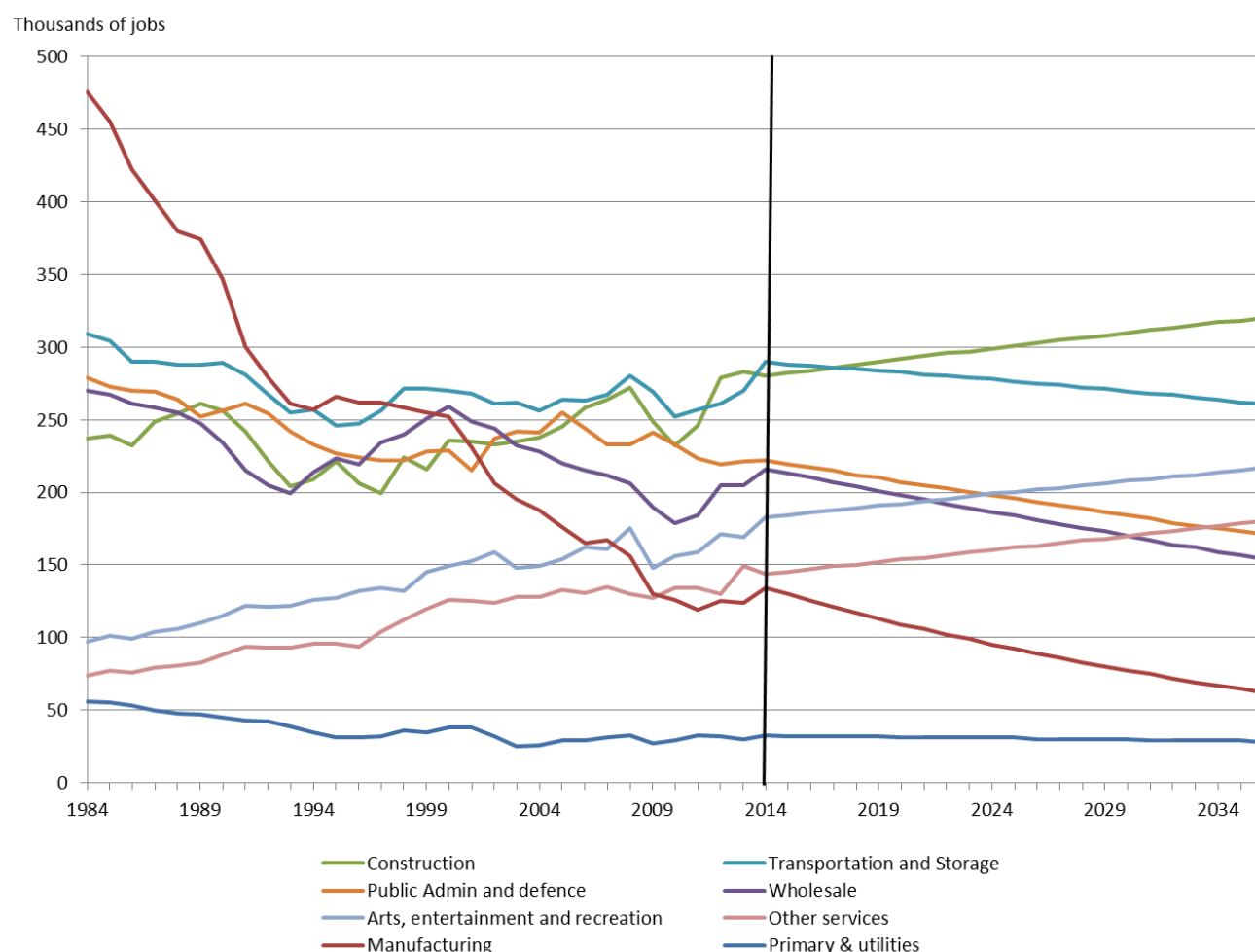
Figure 24: Historic and projected workforce jobs in London's largest broad industry sectors, (thousands), 1984-2036



Source: GLA Economics, July 2015, updated employment projections for London and trend-based projections by Borough

Figure 25 outlines the projected employment growth for London's relatively smaller industry sectors (which are presented separately to more readily identify trends). It shows that the construction sector is projected to grow by 38,000 jobs to reach 320,000 jobs in 2036 (an annual average increase of 0.6% per year). Other sectors that are projected to grow over this time period include other services (up 35,000 jobs, an average increase of 1.0% per year) and arts, entertainment and recreation services (up 33,000 jobs, a 0.8% increase per year). All the other smaller sectors are projected to decrease in total employment between 2015 and 2036. These include manufacturing (down 68,000 jobs, a 3.5% decrease per year), wholesaling (down 59,000 jobs, a 1.5% decrease per year), public administration and defence (down 48,000 jobs, a 1.2% decrease per year), transport and storage (down 27,000 jobs, a 0.5% decrease per year) and primary and utilities (down 4,000 jobs, a 0.6% decrease per year).

Figure 25: Historic and projected workforce jobs in London's smaller broad industry sectors, (thousands), 1984-2036



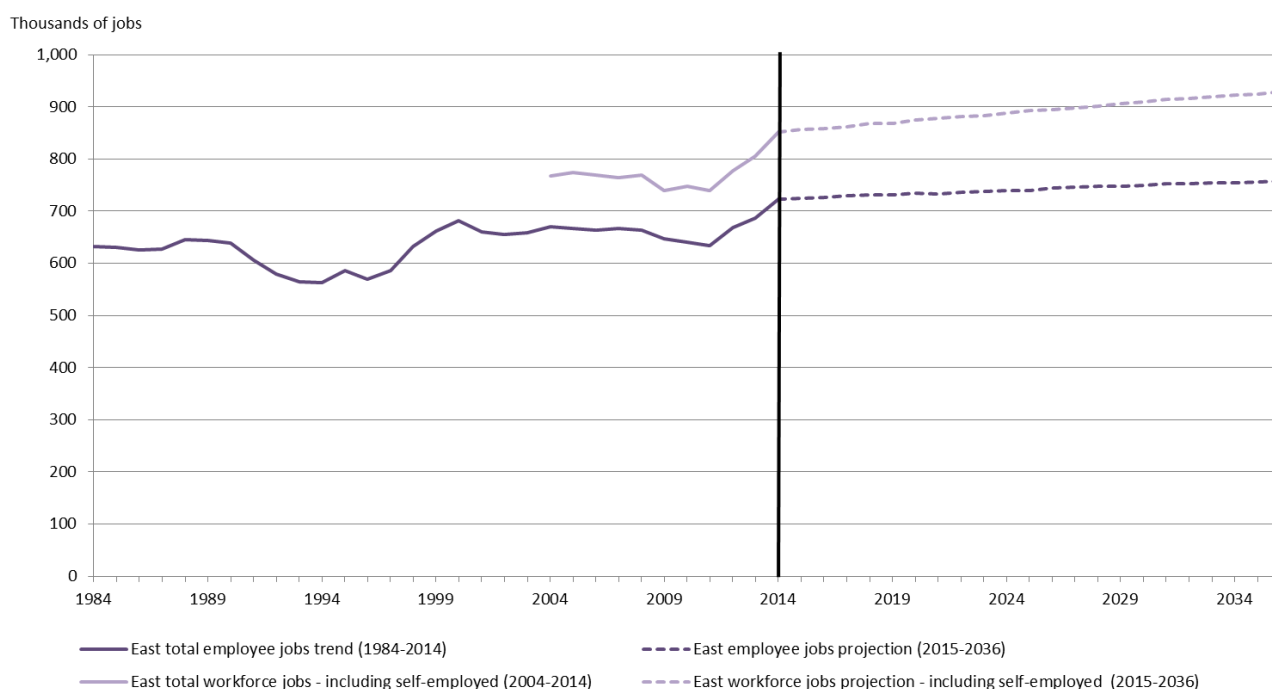
Source: GLA Economics, July 2015, updated employment projections for London and trend-based projections by Borough.

East sub-region labour market projections – total workforce jobs and industry structure

Figure 26 shows the total workforce jobs (employee jobs and self-employed) projection for the East sub-region. Trend data on workforce jobs in the East sub-region is unavailable prior to 2004; therefore this figure includes the trend and projection for employee jobs to provide a relative comparison. It shows total workforce jobs in the East sub-region is projected to increase from 852,000 jobs in 2014 to 929,000 jobs in 2036, equivalent to an average increase of 3,500 jobs per year, or 0.39 per cent per year.

The number of workforce jobs in the South East sub area is also projected to increase from 297,000 jobs in 2014 to 325,000 jobs in 2036, an average increase of 1,200 jobs per, or 0.41 per cent per year. The spreadsheet appending this report provides the data and graph corresponding to **Figure 26** for the South East sub area.

Figure 26: Historic and projected workforce jobs and employee jobs in the East sub-region (thousands), 1984-2036



Source: GLA Economics, July 2015, updated employment projections for London and trend-based projections by borough

Together, **Figure 24** and **Figure 25** outline the projections of industry structure for London. Although, the 2015 report does not break industry structure down to the borough or sub-regional level, these London level projections can provide some insight into of the composition of the East sub-region's industry structure in the future. As noted in section 2.1 professional services, administrative services, health and social work, education and retail are all among the largest industries in the East sub-region and, across London as a whole, these sectors are all projected to grow from 2014 to 2036. These sectors (with the exception of professional services) are localised services, which will tend to grow as the population increases over time.

Section 2.1 also shows that in the East sub-region, accommodation and food services has increased substantially from 2009 and 2014. This trend may continue given the increase in jobs in the sectors projected in **Figure 24**.

However, it is relatively unclear what share of the projected jobs growth at the London level will be situated within the East sub-region. It is also possible that the prospects for jobs growth may be affected by other factors such as large-scale future investments either in the East sub-region or in other parts of London. Such 'known unknowns' or 'one-issue forecasts', insofar as they differ to those that have occurred in the past, will not be captured by the forecasts and projections presented in this report, and may be considered separately as part of local intelligence.

Projections by occupation in London

Table 11 uses information from the 2013 London labour market projections report to estimate the number of jobs across different occupations in London. The projection itself (shown in the last row) is drawn from the report and provides an overall annual rate of change over the period 2011 to 2036. This projection is based on a forward projection of the trends in occupational change from 2001-2011. Due to the lack of further historic series, these results are therefore less robust compared to the total employment projections

for London and the sub-regional level, and those by industry. The projection is applied directly to the current levels of jobs by occupational group outlined in **Table 4**.

Table 11 shows that by 2036 the number of jobs in professional occupations is projected to increase by 504,000 from 1.2 to 1.7 million jobs, with an increasing number of professional jobs across sectors. The number of jobs in the managers, directors and senior officials category is also expected to increase by 203,000 jobs by 2036. This increase is largely driven by an increase in the professional, real estate, scientific and technical activities sector. Increases projected in skilled trades (up 166,000 jobs), and associate professional and technical occupations (up 63,000 jobs) are also driven by growth in this industry sector.

Projected growth in jobs in process, plant and machine operatives and elementary occupations (up 131,000 jobs to 2036) is instead concentrated in administrative and support services, and accommodation and food sectors. Administrative and secretarial occupations are instead projected to decrease by 319,000 jobs, while the number of jobs in caring, leisure and other service occupations; and sales and customer service occupations, are projected to remain relatively stable.

As a result, there is likely to be a changing composition of jobs across occupations. Professionals, skilled trades, and managers, directors and senior officials are projected to increase their share of total employment from 2014 to 2036. In contrast, the proportion of jobs in administrative and secretarial occupations is projected to decrease substantially (from 10.5% to 3.3% of total London jobs) over the same time period.

Table 11: Number and proportion (%) of jobs in London, 2014 and 2036 (projected), by occupational group (thousands).

	Managers, directors and senior officials	Professional occupations	Associate professional and technical occupations	Admin. and secretarial occupations	Skilled trades occupations	Caring, leisure and other service; and sales and customer service occupations	Process, plant and machine operatives; and elementary occupations	Total in all occupations
Total jobs, 2014	618	1,207	926	507	345	630	601	4,833
Projected number of jobs, 2036	821	1,711	989	188	511	630	732	5,635
Proportion of jobs, 2014 (%)	12.8	25.0	19.2	10.5	7.1	13.0	12.4	100.0
Proportion of jobs, 2036 (%)	14.6	30.4	17.6	3.3	9.1	11.2	13.0	100.0
Annual % change, projected (2011- 2036)	1.3	1.6	0.3	-4.4	1.8	0	0.9	0.7

Source: ONS Annual Population Survey – jobs in 2014; GLA Economics, April 2013, London labour market projections.

Note: number of jobs rounded to nearest 1,000. Projections may not sum due to the inclusion of new data.

Projections by qualification in London

Table 12 uses information from the 2013 London labour market projections report to estimate the number of jobs across different qualifications in London. The projection itself (shown in the last row) is drawn from the report and provides an overall annual rate of change over the period 2011 to 2036. This projection is based on a forward projection of the trends in qualifications held from 2004-2011. However, the growth path for higher qualifications has been constrained as recent large increases in the number of people

achieving higher qualifications would make standard projections implausible³⁹. The projections are likely to be less robust compared to the industry and total employment projections presented previously. The projection is applied directly to the current levels of jobs by outlined in **Table 12**.

Table 12 shows that by 2036 the number of jobs associated with degree level qualifications is projected to increase by 954,000 jobs, to 3.38 million jobs, and is the only qualification category projected to increase in proportion, from 50 to 60 per cent of total London jobs. Higher education and other qualifications are also expected to increase by 53,000 jobs and 49,000 jobs respectively. This increase is largely due to the projected increase in professional occupations over this time period. Jobs associated with other qualifications are also expected to increase from 421,000 jobs in 2014 to 470,000 jobs in 2036. In contrast, there is projected to be a decrease in the number of jobs associated with GCE, A-levels, GCSE A*-C and no qualifications.

Table 12: Number and proportion (%) of jobs in London, 2014 and 2036 (projected), by qualification (thousands).

	Degree or equivalent*	Higher education	GCE, A-level or equivalent	GCSE grades A*-C or equivalent	Other qualifications	No qualification	Total in all occupations
Total jobs, 2014	2,425	379	803	604	421	201	4,833
Projected number of jobs, 2036	3,379	432	786	591	470	192	5,635
Proportion of jobs, 2014 (%)	50.2	7.8	16.6	12.5	8.7	4.2	100.0
Proportion of jobs, 2036 (%)	60.0	7.7	13.9	10.5	8.3	3.4	100.0
Annual % change, projected (2011-2036)	*1.5	0.6	-0.1	-0.1	0.5	-0.2	0.7

Source: ONS Annual Population Survey (number of jobs); GLA Economics, April 2013, London labour market projections (projection). Note: Number of jobs rounded to nearest 1,000, projections may not sum due to the inclusion of new data, *weighted by the number of jobs with higher and ordinary degrees.

Replacement demand in London

The employment projections and trends presented throughout this report have broadly identified the potential future path of the stock of employment; however, the labour market is dynamic, with people moving in and out of the labour force, or into different jobs all the time. For example, many people leave their jobs for various destinations. Some people will retire, some will choose to leave London (and not commute back in), some will take time off work to have children, some will shift from one occupation or sector to another, some will fall long-term sick and some will die.

For London's economy to continue to function effectively all these moves out of employment need to be replenished. The annual outflow from employment, which needs to be replaced, is sometimes referred to as the level of gross replacement demand. The majority of this gross replacement demand is usually satisfied from within the labour market - for example, by people moving from one job to another, from people returning to the labour market after a period of absence or unemployment. Replenishment can also come from 'outside' of the current labour market, either from those entering London's workforce from education, or in-migration. These flows highlight that even in sectors or occupational groups which are projected to be in decline, new staff will be required to replenish those leaving their job roles and this is likely to derive education and training requirements.

³⁹ Further details on this methodology can be found in the 2013 London labour market projections report.

GLA Economics has modelled these types of changes over time for London, however substantial assumptions were required. Specifically, the levels of inflows and outflows from the broad occupation groups between 2001 and 2012 were averaged and projected forward into the future, and it is assumed that this will remain constant. However, this may well underestimate the actual level of turnover that generates replacement demand and associated education and training requirements. For example, this analysis does not pick up any individuals who leave their role but subsequently take up another job in the same occupational group. It is likely that at least some of these individuals will have formal or informal education and training requirements.

Table 13 shows the projected levels of employment inflows and outflows within each occupation group in 2036. In general, higher levels of total employment are likely to result in an increase in absolute number of workers changing occupations. The table shows that over 575,000 people are projected to leave their occupation over the course of the year in 2036, up from 513,000 in 2012 – highlighting the potentially substantial and on-going education and training needs across London’s workforce.

This finding is supported by evidence from UKCES which estimated the UK’s replacement demand at between 2 and 4 per cent per annum of the employed workforce⁴⁰, much higher than the level of labour demand from growth in particular sectors (expansion demand).

Table 13: Estimated flows out of and into occupational groups for the year 2036 (thousands), assuming rates from 2001–2012 remain constant.

Occupation	Absolute number leaving the occupation	Met by internal supply*	Net requirement from education / new entrants
Managers, directors and senior officials	80	60	20
Professional occupations	119	94	26
Associate professional and technical occupations	98	83	15
Administrative and secretarial occupations	20	17	3
Skilled trades occupations	47	30	17
Caring, leisure and other service; and sales and customer service occupations	87	67	21
Process, plant and machine operatives; and elementary occupations	127	101	26
Total	577	450	127

Source: GLA Economics, April 2013, London labour market projections (projection). Note: Number of jobs rounded to nearest 1,000, *"Met by internal supply" means met by all inflows excluding inflows from education and 16 year olds entering the labour market

⁴⁰ UKCES, March 2014, [Working futures 2012–2022 Evidence report 83](#)

4 Supply of learners

Summary – London and the East sub-region

- In the East sub-region, the working-age resident population is projected to increase from 1.63 million in 2014 to 1.89 million in 2041 (up 16%). This compares with the projected 16 per cent increase in the working age population across London as a whole (up from 5.85 million in 2014 to 6.77 million in 2041). The age cohorts that are expected to increase the most over this period include 16-22 year olds, and those aged 35 and over.
- This population growth indicates that in 2041, there are likely to be approximately 114,000 more young people across London and 37,000 more young people in the East sub-region, within the key learning cohorts of 16-18 and 19-24. Moreover, given the larger working age population aged over 25, other things being equal, there is also likely to be an increase in the number of adult learners, as well as in work skill-based learning.
- In terms of the qualification levels attained by the working age resident population, 39 per cent in the East sub-region had attained qualifications at higher education or above (NVQ4+), while 17 per cent had attained GCE, A-level or equivalent, 16 per cent attained GCSE grade A*-C or equivalent, 20 per cent had attained other qualifications, and the remaining 9 per cent had not attained any formal qualifications.
- The overall trend of qualifications among the working age population in the East sub-region reflects that of London, with an increasing proportion of people gaining higher level qualifications, and substantial decreases in the number and proportion of people with lower or no qualifications.
- The age, experience and qualifications of Londoners matter in the labour market. The 2014 UKCES Employer Perspectives Survey found that London employers are significantly less likely than employers in other regions to recruit 16-18 year olds. Only 17 per cent of all London employers who had conducted recruitment in the past year, had recruited someone aged 16-18 in the past 12 months, compared to 27 per cent in the rest of England. London employers were instead twice as likely to have recruited someone to their first job from university or an HE institution in the last 2-3 years (24% of all employers compared to 12% in the rest of England).
- The 2014 Employer Perspectives Survey also found that only 11 per cent of London employers had apprentices on site or offered formal apprenticeships, compared to 16 per cent in the rest of England. Apprenticeships offered in London also tended to be shorter in length with 26 per cent lasting 12 months or less, compared to just 10 per cent of apprenticeships in the rest of England.

This section presents an analysis in relation to the supply of learners in London, which is the focus of the subsequent stages of the FE sector area based reviews. Included in this analysis is an overview of projected population changes (focusing on the 16-19, and 20-24 year old age cohorts), and the current level of qualifications held by London residents and residents of the East sub-region. Together this information provides some indication of the potential size of learner cohorts in the future.

The main findings of relevance to the FE sector from the UKCES Employer Perspectives Survey are also presented in this section. This survey provides “insight into the thoughts and behaviour of employers as they make decisions about how to engage with training providers, schools, colleges and individuals in the wider skills system, to get the skills they need”⁴¹.

⁴¹ UKCES, November 2014, [Employer Perspectives Survey 2014: Technical report](#), Evidence Report 88

4.1 Population projections and qualifications

The population projections presented in this section are drawn from the 2014 GLA population projections produced by GLA Demography and Policy Analysis. These projections project London's population through to 2041, which covers longer period than the employment projections presented in section 3.2. The updated employment projections to be published in mid-2016 will also align to this extended 2041 projection period. These projections have been capped by the availability of housing, which was estimated through the Strategic Housing Land Availability Assessment (SHLAA)⁴². This provides a realistic estimate of future population given the growth constraints in different parts of London. The data on qualifications is drawn from the ONS Annual Population Survey (APS), and is similar to that presented in section 2. However, in this case the data is focused on the supply of qualifications held by residents of working age, rather than those held by workers.

London

Figure 27 shows the working age (16-64 year olds) population projection for London from 2014 to 2041. The working age population is expected to increase from 5.85 million in 2014 to 6.77 million in 2041, an increase of 16 per cent. This population increase is projected to be underpinned by increases in population across the entire working age cohort, particularly among those aged 16-22 year olds and those aged 35 years and over. The 16-18 year old age cohort is expected to increase by 57,000 people from 281,000 in 2014 to 339,000 people in 2041 (a 21% increase). The wider 19-24 year old age cohort is also expected to increase by a similar amount (57,000 people, from 703,000 people in 2014 to 760,000 people in 2041, an 8% increase).

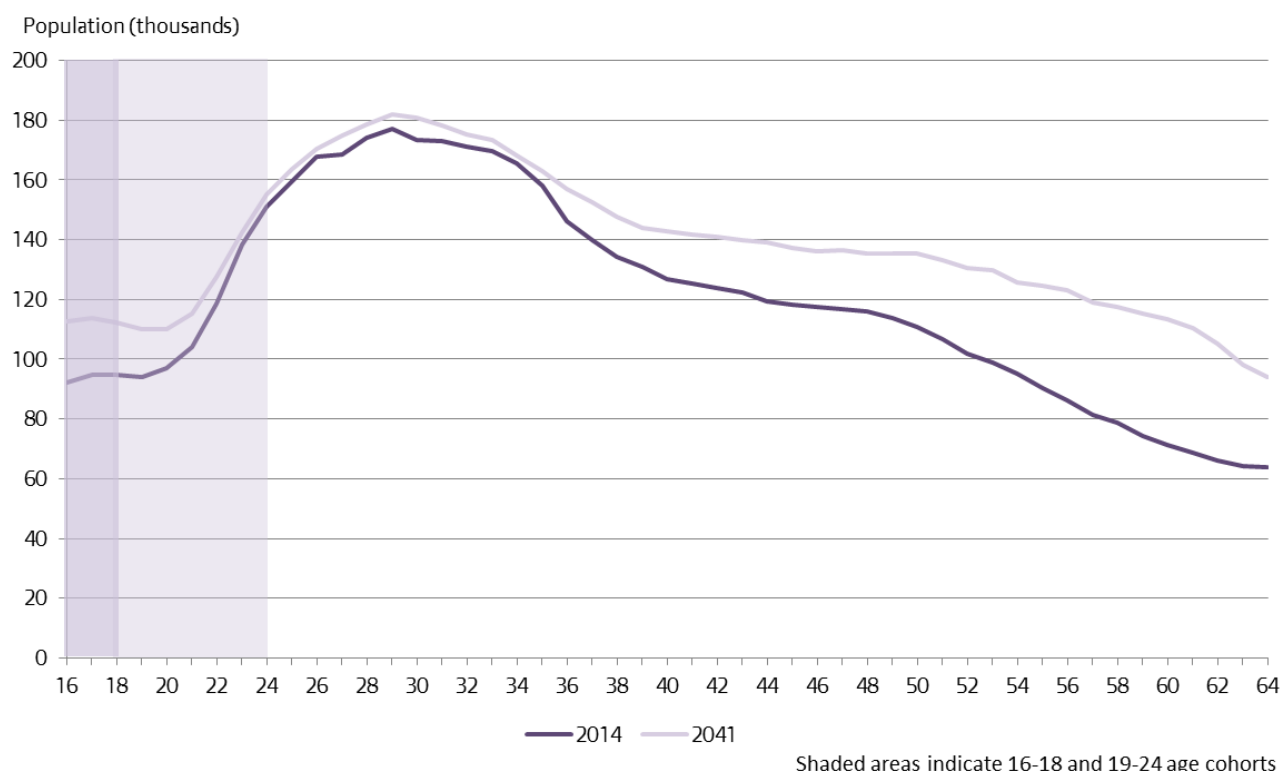
Overall, this indicates that in 2041, there are likely to be approximately 114,000 more people within the key learning cohorts of 16-18 and 19-24. Furthermore, given the larger working age population aged over 25, other things being equal, there is also likely to be an increase in the number of adult learners, and may consequently be an increase in demand for work-based learning.

Not only is London's population growing, it is also ageing. By 2041, 16 per cent of London's population is projected to be aged 65 or older, compared with 11 per cent in 2014. The employment rate of this age group (65+) was 11.9 per cent in 2014, up from 7.7 per cent in 2004⁴³.

⁴² GLA Demography and Policy Analysis, [2014 round population projections](#), SHLAA estimates.

⁴³ GLA Economics, 2016, [Draft Economic Evidence Base](#), Chapter 6 (page 113)

Figure 27: Age structure of London's working age resident population, 2014-2041, (SHLAA constrained projection)



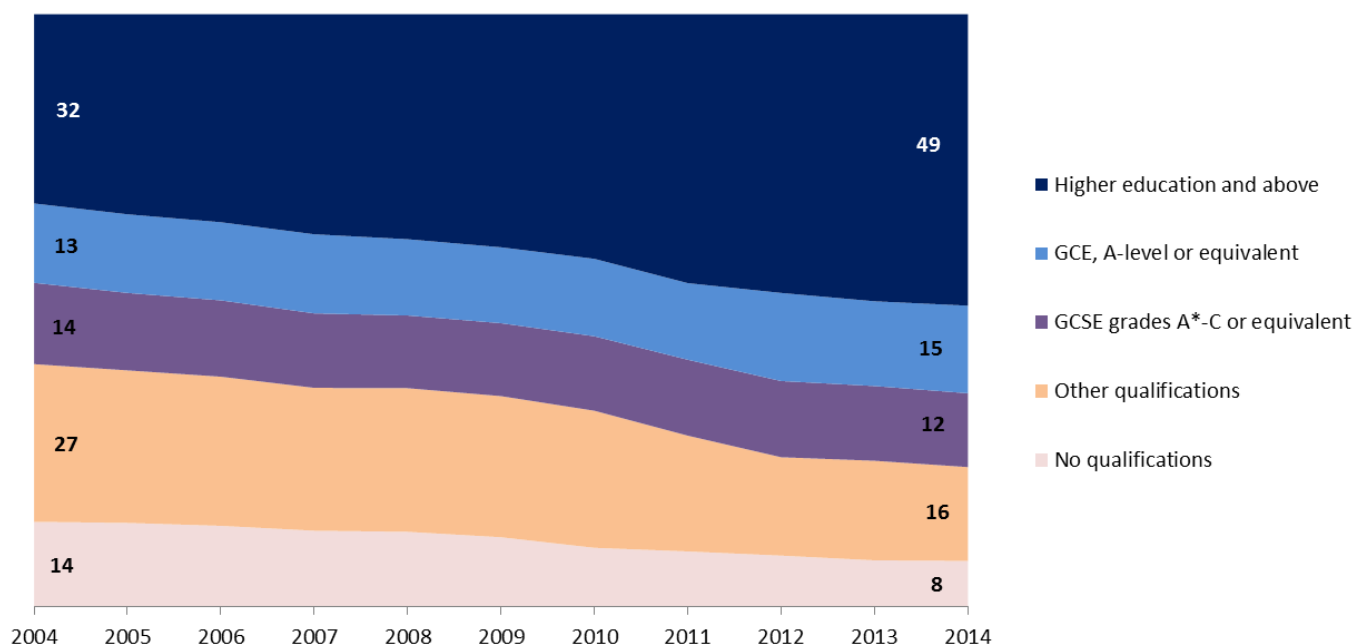
Source: GLA, 2014 SHLAA constrained population projections

Figure 28 outlines the recent trends in qualification attainment of working age residents in London (aged 16-64 years old). It shows that almost half of the population had attained qualifications at higher education or above (formerly NVQ4+), while 15 per cent had attained GCE, A-level or equivalent, 12 per cent attained GCSE grades A*-C or equivalent, 8 per cent had attained other qualifications, and the remaining 8 per cent had attained no qualifications.

Figure 28 also shows that since 2004, when the APS series began, an increasing share of the working age population have attained higher level qualifications or above (up 17 percentage points, from 32% to 49% in 2014). This has been achieved without loss to the share of working age population in London with A-levels or GCSE grades A*-C or equivalents; and instead there has been a corresponding decrease in the proportion of the working age population with low-level or no qualifications. Taking into account this trend and the labour market projections detailed in section 3.2, the number and proportion of people in London with higher levels of qualifications is likely to continue to increase in the future. As well as reflecting increasing attainment levels over time, this trend also reflects London's ability to attract highly qualified people from outside the region, and outside the UK.

Figure 28: Qualifications (%) of London's residents - working age population (16-64), 2004-2014

% working age population by qualification level



Source: ONS Annual Population Survey. Note: Rounded to nearest 1,000 or 1 per cent; Trade apprenticeships are split 50/50 between NVQ level 2 and 3. This follows ONS policy for presenting qualifications data in publications. NVQ level 1 is combined with other qualifications.

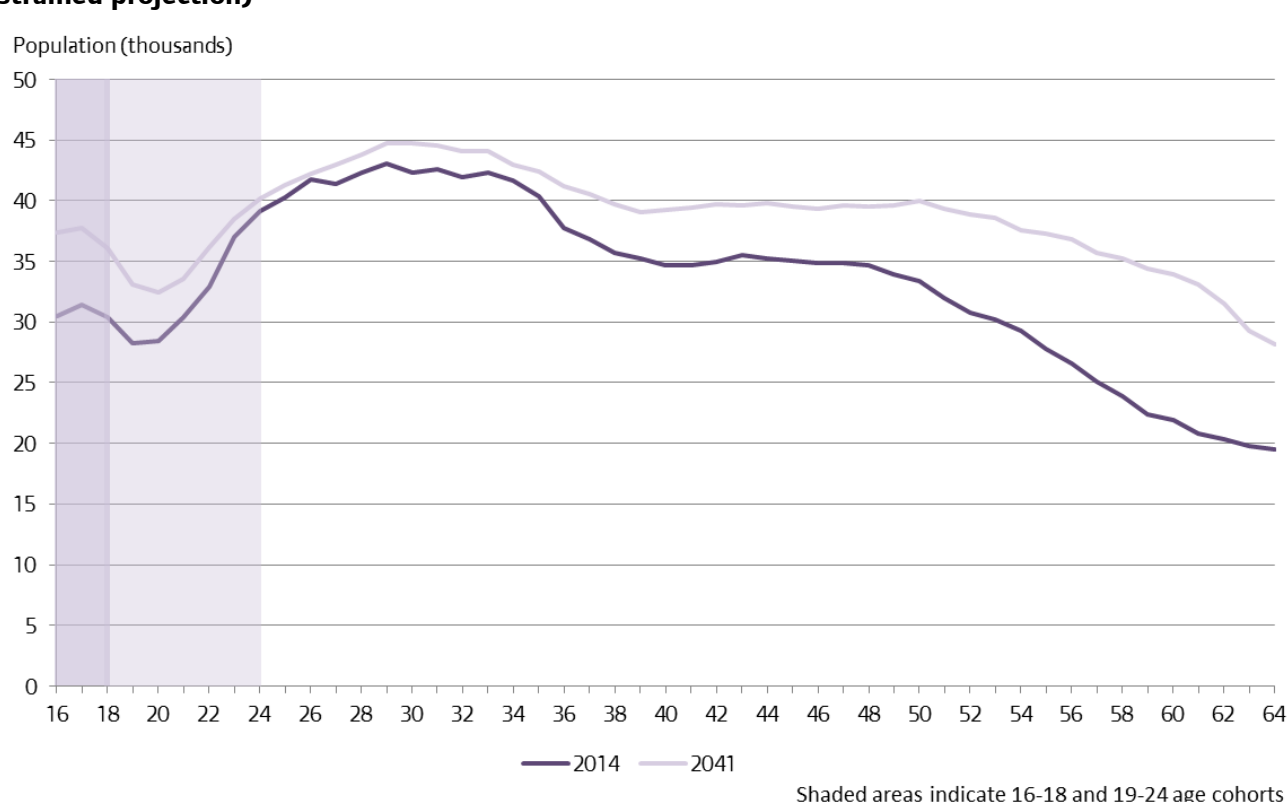
East Sub-region

Figure 29 shows the working age (16-64 year old) population projection for the East sub-region from 2014 to 2041. The working age population is expected to increase from 1.63 million in 2014 to 1.89 million in 2041, an increase of 16 per cent. This overall trend in the East sub-region is similar to London as a whole, with the population growth underpinned by substantial increases among those aged 16-22 year olds and 35 years and over.

The 16-18 year old age cohort in the East sub-region is expected to increase by 19,000 people between 2014 and 2041, from 92,000 people in 2014 to 111,000 people in 2041 (a 20% increase). The 19-24 year old age cohort is expected to increase by 18,000 people, from 196,000 people in 2014 to 214,000 people in 2041, a 9% increase). Overall, this indicates that in 2041, there are likely to be approximately 37,000 more people within the key learning cohorts of 16-18 and 19-24.

The South East sub area's current population structure is expected to increase from 531,000 people in 2014 to 582,000 in 2014, an increase of 50,200 people (9%). Over this period the 45 to 64 year old age cohort is expected to account for 62 per cent of this increase (31,000 people). Over the same period, the number of 16-24 year olds is expected to increase by 5,000 people, from 89,000 to 94,000 people.

Figure 29: Age structure of the East sub-region's working age resident population, 2014-2041, (SHLAA constrained projection)



Source: GLA, 2014 SHLAA constrained population projections

Table 14 and **Table 15** outline the recent trends in qualification attainment of residents in the East sub-region. These tables also include data from 2004 to provide a comparison from when the series began. These tables show that in 2014, approximately 39 per cent of the working age resident population (621,000 people) attained qualifications at higher education or above, compared to 22 per cent in 2004 – in line with the London-wide trends. These tables also indicate that in 2014, approximately 17 per cent (266,000 people) attained GCE, A-level or equivalent, and 16 per cent (255,000 people) had achieved GCSE grades A*-C or equivalent. 20 per cent (319,000 people) had attained other qualifications and 9 per cent (144,000 people) had not gained any formal qualifications.

The overall trend of qualifications among the working age population in the East sub-region reflects that of London overall. There has been an increasing proportion of people holding higher level qualifications, and substantial decreases in the number and proportion of people with other or no qualifications.

The South East sub area follows the overall trend for London and the East sub-region, with an increasing number of residents in the South East sub area gaining higher level qualifications. The full data tables outlining this trend are available in the spreadsheet appending this report.

Table 14: Number of residents in the East sub-region by highest qualification, working age population (16-64), 2004, 2009- 2014 (thousands of people)

Qualification	2004	2009	2010	2011	2012	2013	2014	Change (2004-14)	% Change (2004-14)
Higher education and above	299	431	471	552	574	618	621	322	108
GCE, A-level or equivalent	195	217	232	231	256	248	266	71	36
GCSE grades A*-C or equivalent	243	225	248	240	256	265	255	12	5
Other qualifications*	391	404	389	362	325	315	319	-72	-18
No qualification	228	223	198	167	159	143	144	-84	-37
Total number of people	1,225	1,328	1,378	1,374	1,415	1,450	1,435	210	17

Source: ONS, Annual Population Survey, rounded to nearest 1,000, *other qualifications include NVQ1 and other overseas qualifications.

Table 15: Proportion (%) of residents in the East sub-region by highest qualification, working age population (16-64), 2004, 2009- 2014

Qualification	2004	2009	2010	2011	2012	2013	2014
Higher education and above	22	29	31	36	37	39	39
GCE, A-level or equivalent	14	15	15	15	16	16	17
GCSE grades A*-C or equivalent	18	15	16	15	16	17	16
Other qualifications*	29	27	25	23	21	20	20
No qualification	17	15	13	11	10	9	9
Total number of people	100	100	100	100	100	100	100

Source: ONS, Annual Population Survey, rounded to the nearest 1 per cent, *other qualifications include NVQ1 and other overseas qualifications.

4.2 UKCES Employer Perspectives Survey

The 2014 UKCES Employer Perspectives Survey conducted interviews with 18,000 UK employers (of which 1,600 were based in London) and sought to understand how employers engage with different schools, colleges, and training providers to get the skills they require for their business.

The survey found that London employers are significantly less likely than employers in other regions to recruit 16-18 year olds. Only 17 per cent of all London employers who had conducted recruitment in the past year (equivalent to 51% of all London employers), had recruited someone aged 16-18 in the past 12 months, compared to 27 per cent in the rest of England. Reflecting the demand for high-level skills in the capital, London employers were instead twice as likely to have recruited someone to their first job from university or an HE institution in the last 2-3 years (24% of all employers compared to 12% in the rest of England).

The Survey also found that 11 per cent of London employers currently had or offered formal apprenticeships on site, compared to 16 per cent in the rest of England. Apprenticeships offered in London also tended to be shorter in length with 26 per cent lasting 12 months or less, compared to just 10 per cent in the rest of England.

Overall, these findings suggest that employers in London differ from those in the rest of England in terms of their perspectives and behaviours in regards to employing young people and apprentices. Coupled with the findings of relatively low levels of employer engagement and investment in training (compared to the rest of England) presented in section 2.4, this may suggest that London employers, generally, tend to seek relatively more experienced staff and those who have completed higher education.

Further data and analysis in relation to the supply of learners and the educational attainment of residents in London and the sub-regional areas is beyond the scope of this economic analysis.

GLAECONOMICS

Greater London Authority
City Hall
The Queens Walk
London SE1 2AA

Tel 020 7983 4922
Fax 020 7983 4674
Minicom 020 7983 4000
Email glaeconomics@london.gov.uk

<http://www.london.gov.uk/gla-economics-publications>

MAYOR OF LONDON