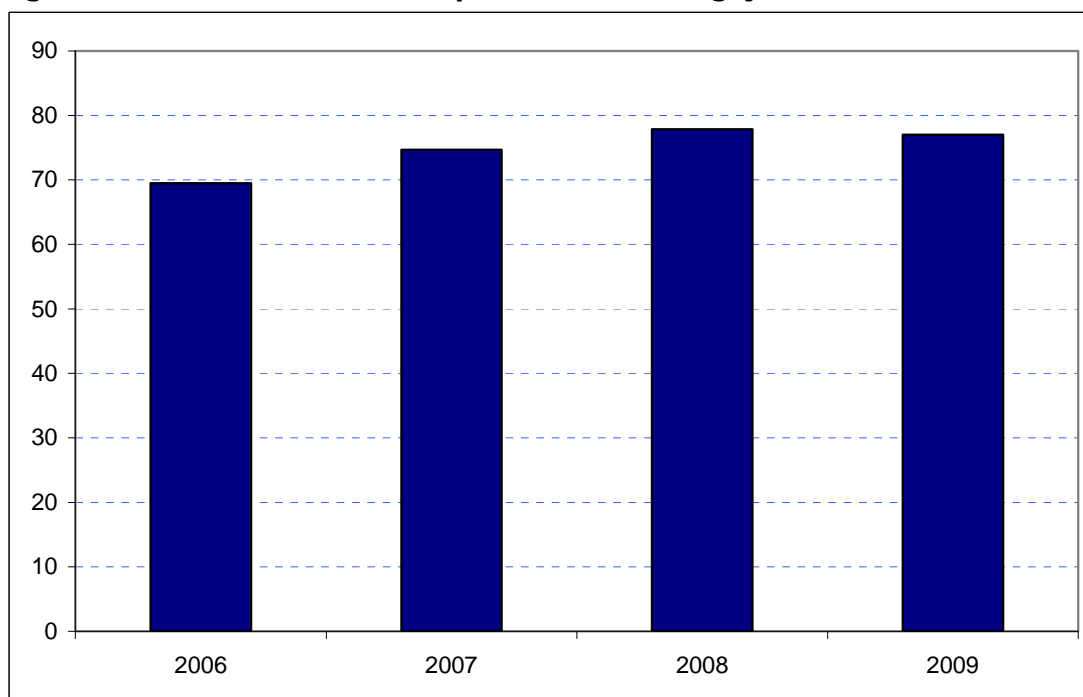


Haringey
Borough Rank: 25

Estimates in Figure 5.14 show a net gain in Haringey's overseas visitor spend since 2006 and 2007. Spend increased between 2006 and 2008 from £69 million in 2006 to £75 million in 2007 and to £78 million in 2008. However, results show a slight fall back to £77 million in 2009. The overall picture is one of general stability.

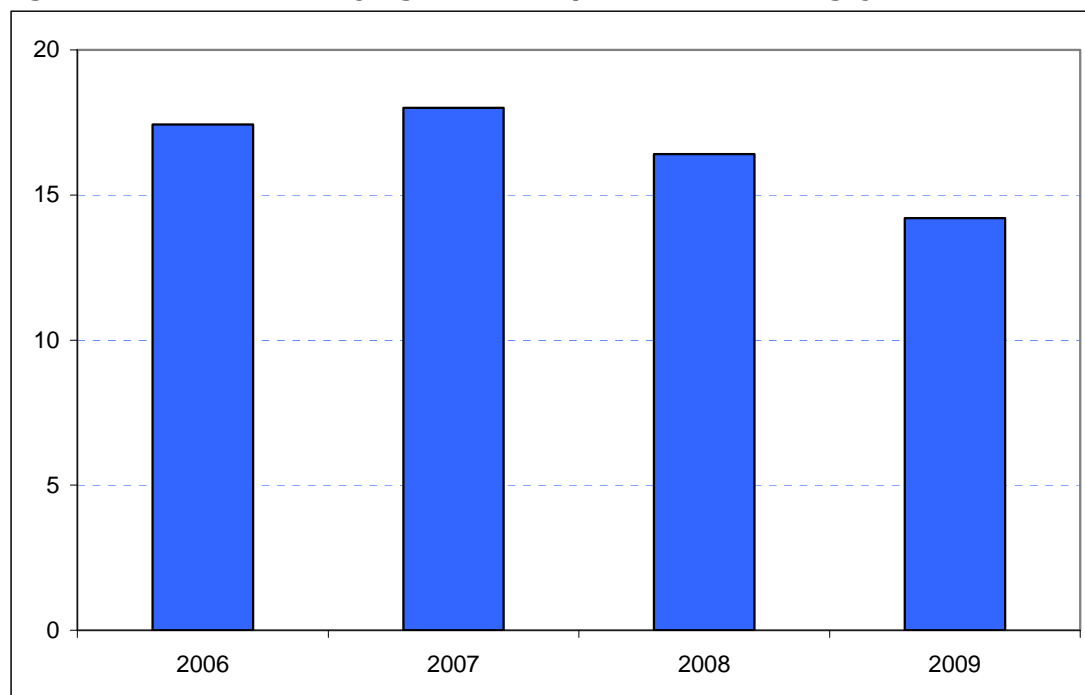
Figure 5.14: Overseas tourism expenditure in Haringey (£ millions)



Sources: IPS, BRES, LDA surveys and GLA Economics calculations

Figure 6.14 presents estimates for domestic overnight visitors in Haringey. These show a consistent fall in spend in the Borough since 2006. In 2006 spend was estimated to be £17 million. In spite of a small rise in 2007, this is estimated to have dropped to £16 million in 2008 and then fallen back further to £14 million in 2009.

Figure 6.14: Domestic staying tourism expenditure in Haringey (£ millions)



Sources: UKTS, BRES, LDA surveys and GLA Economics calculations

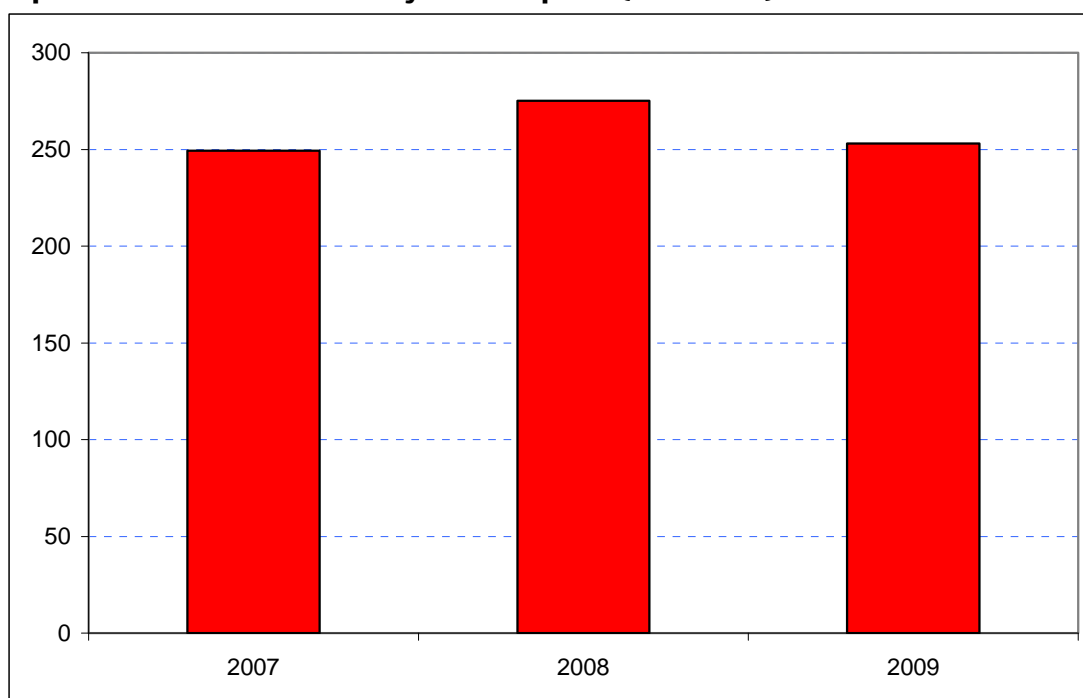
An experimental estimate of day visitor spend is provided in Tables 2a and 2b of Chapter 2. It should be emphasised that these are modelled estimates and further details of the data issues presented by day visitor tourism can be found in GLA Economics' Current Issues Note 29²⁰. Details of the modelling and changes to it from previous LATI estimates can be found in the methodology section.

When the experimental day visitor estimates are included, total estimated tourist expenditure exhibited a relatively small net rise between 2007 and 2009 as shown in Figure 7.14. Receipts in 2007 had been £250 million, increasing to £275 million in 2008 before slipping back to £253 million in 2009. Data for 2006 were excluded from the graphic as they would have introduced the additional problem of a change of survey basis for the day visitor estimates prior to 2007.

²⁰ <http://www.london.gov.uk/publication/estimating-contribution-leisure-day-visitors-londons-tourism-industry>

GLA Economics - Estimating the contribution of leisure day visitors to London's tourism industry (March 2011)

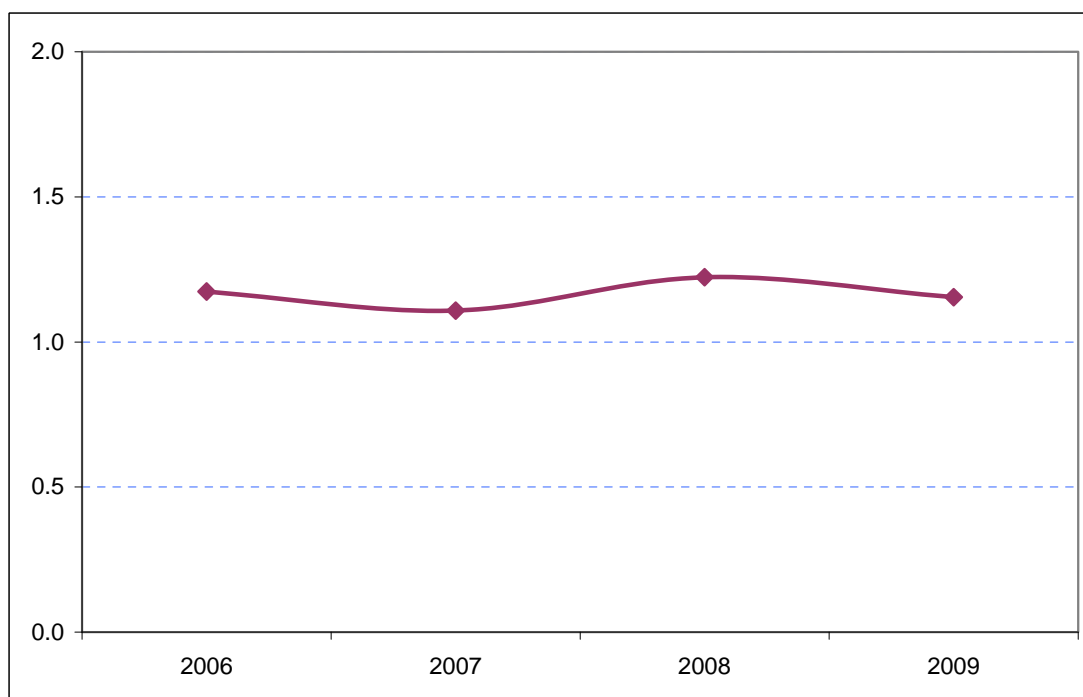
Figure 7.14: Estimates of total tourism expenditure in Haringey including experimental estimates of day visitor spend (£ millions)



Sources: IPS, UKTS, BRES, LDA surveys and GLA Economics calculations

Figure 8.14 shows that Haringey's share of total London tourism expenditure has been broadly consistent since 2006 at either 1.1 per cent or 1.2 per cent of the London total.

Figure 8.14: Haringey's estimated share of total London tourism expenditure (%)



Sources: IPS, UKTS, BRES, LDA surveys and GLA Economics calculations