

[REDACTED]
[REDACTED]
[REDACTED]
11 March 2015

Boris Johnson
The Mayor of London

Dear Mr Johnson

**Alexandra Palace: possible UN World
Heritage site now in jeopardy**

I NEED your help again please in respect of Alexandra Palace!

I remain grateful for the splendid support that you provided in your letter of 3 May 2011 for a fifth UN World Heritage site in London (scan attached for convenience).

Your support is likely to have been the key factor that enabled me in early 2012 to persuade Haringey Council – via the Alexandra Palace Trust Board – to adopt UNESCO World Heritage site status as a long term goal for the South East wing of Alexandra Palace

This of course is the site of the BBC's 1936 Studios and the birthplace of television. Recently, this goal has quietly been side-lined in the misguided names of neatness and symmetry.

Unfortunately, due to a relatively small (<10%) aspect of a Planning Application – approved last month by Haringey Council's Planning Committee — I believe that *our* goal is now in jeopardy.

However, the Application calls for the removal of *all the 1936 BBC Studio walls*, comprised of brick-in-filled arches, so as to restore a Victorian façade, behind which had been tea-rooms. This irrevocable move has the questionable support of English Heritage, but not those bodies less attached to Victoriana – and more relevant – such as *The Greater London Industrial Archaeology Society* (GLIAS). (N.B. I and others support about 90% of the Proposal, that is likely to be approved for financing by the Heritage Lottery Fund.)

Could you please ask the Heritage Lottery Fund to seek a small amendment to the proposal such that an irreversible change is not made to the BBC studio walls; so that the last remaining physical evidence of the 1936 Studios is retained and so that the possibility of a UN World Heritage application is kept?

I will write again shortly with more detail.

Yours Sincerely






Clive Carter

Ally Pally: UN World Heritage proposal now in jeopardy

Clive Carter (Clive.Carter@[REDACTED])

To: Mayor (mayor@london.gov.uk)

Cc: [REDACTED]

Attachments:  =?utf-8?B?M+KAk0hlcmI0YWdlIFByb3Bvc2FsIOKAkyBDRU8gcmVwb3J0LnBkZg==?=  =?utf-8?B?MeKAk0FQIEhlcmI0YWdlIFByb3Bvc2FsIHVuMTBBLnBkZg==?=  =?utf-8?B?MuKAk0xldHRlciBmcm9tIEJvcmlzIEpvaG5zb24ucGRm?=  Letter to Mayor about the 1936 BBC studios.pdf  Comments by the Association of Industrial Archeology.pdf

Boris Johnson
Mayor of London

Dear Mr Johnson

**Haringey Council, Alexandra Palace,
English Heritage and the Heritage Lottery Fund**

Please find attached an urgent letter concerning the above, with other attachments.

I will write again shortly; thank you for your attention.

Kind regards

Clive Carter

L | [REDACTED]
M | [REDACTED]

Councillor | Highgate Ward
Liberal Democrat Party

This message has been scanned for viruses by the Greater London Authority.

[Click here](#) to report this email as spam.

Alexandra
Palace the
people's palace.

Alexandra Palace & Park Board

on 16 February 2012

Report Title: World Heritage Site status

Report of: Duncan Wilson, APP Chief Executive

1. Purpose

- 1.1 To establish the Board's policy on the SAC/CC recommendation that WHS status should be pursued by Alexandra Palace.

2. Recommendations

- 2.1 That the Board notes the presentation by Clive Carter set out in the paper attached, and agrees (following the recommendations of the SAC/CC) that in principle AP should pursue WHS status, pragmatically noting the timetable for doing so and the need to adopt a "value for money" approach given the likely cost of the exercise.

Report Authorised by: Duncan Wilson, Chief Executive APP

Contact Officer: Duncan Wilson, Chief Executive Alexandra Palace & Park, Alexandra Palace Way, Wood Green N22 7AY Tel No. 020 8365 2121

3. Executive Summary

- 3.1 This report follows a discussion of Clive Carter's paper to the SAC/CC on 8 November, and a parallel presentation by Sue Cole who leads for English Heritage on WHS's. Clive will be representing his paper to the full Board at the meeting. The upshot of the SAC/CC's discussion was a recommendation that there would be support for "the aspiration (that APPCT should pursue).. World Heritage Site recognition" but an acknowledgement that the process would be costly and protracted (the tentative nomination list being closed for a further ten years), and the outcome by no means certain given stiff competition.
- 3.2 Following the tenor of that discussion it is proposed that APPCT undertakes further research on the precise requirements for a WHS bid to be pursued and bears these in mind in the course of pursuing other relevant and more urgent objectives such as regeneration plans including refurbishment and conservation of the BBC studios, the preparation of a Heritage Lottery Fund bid, and the preparation of a Conservation Plan for the whole of Alexandra Palace. This will ensure that we obtain the best value for money in pursuing the objective of WHS status.

4. Reasons for any change in policy or for new policy development (if applicable)

4.1

5. Background

5.1 Clive Carter's paper outlines the case for the international importance of the BBC studios as the "birthplace of television". The studios survive in reasonably authentic condition, which is would meet one criterion for inscription as a WHS. This is currently being assessed in detail as part of the work being undertaken by Donald Insall Associates our conservation architects.

5.2 There would be benefits to the Palace achieving WHS status in terms of recognition and profile. Some of these would be achievable without WHS designation, and we should be pursuing these anyway given that it would take ten years for our candidacy for the "tentative list" to be assessed by the Department of Culture Media and Sport. Even then we would in all likelihood be added to a list which currently has a number of candidates which might rank higher than AP in competing for UK nomination. The next stage would be competition for designation by UNESCO, against candidates from all over the world

5.3 However in my view WHS status will not necessarily and directly bring in financial support to the Palace, although to might underpin other strategies, for example tourism and learning. No grant money is available from ICOMOS/UNESCO for UK World Heritage Sites (it is channelled instead to developing countries' WHS's where the need is demonstrably greater).

5.4 To compete successfully for a place on the UK list would take a significant investment (EH estimate £500k) in consultancy studies and reports. It is not likely to add to our chances if we don't do this work thoroughly with independent experts. Having been involved in Chatham's ongoing bid for WHS status I can confirm this from personal experience. This required significant financial support from a number of local authorities and public bodies and has been running for at least five years already.

5.5 I am therefore recommending that APPCT do indeed adopt the objective of featuring on the tentative list of UK nominations at the next opportunity, currently ten years away. But I do not recommend that we make our objective of achieving WHS status the feature of a major press/PR campaign at this stage, or constitute a diversion from the more urgent objectives of preparing for regeneration. This process will incorporate during 2012:

- a conservation masterplan already commissioned from Donald Insall Associates, which will assess the condition and authenticity of the BBC studios;
- a spatial masterplan about to be commissioned which will make recommendations as to how areas including the BBC studios might be used in future, and whether adaptations might be necessary to make this use possible. The lead assumption is that the Studios might constitute a centre for interpretation and learning at the Palace.
- A bid to the Heritage Lottery Fund to finance the major part of such work, which will have to include a credible and sustainable business case for running any such facility, and a costed refurbishment plan.

5.6 As part of this process we should state the case for WHS designation, and our commitment to achieving it. But I do not believe it would help our case to give that

undue weight, given the uncertainty of the eventual outcome and the time we would have to wait.

5.7 So I can recommend to the Board the SAC's resolution that "the proposal for WHS recognition be supported in principle and that the Board be asked to incorporate this into the Trust's long term regeneration strategy and a feasibility analysis be conducted to identify strengths weaknesses and resources needed". However I would not propose that that feasibility analysis be conducted until after the current work on regeneration planning is complete, ie probably not until late in 2012 at the earliest, given very limited staff and financial resources.

DW 23.1.12



Proposal to the Alexandra Park & Palace Trust Board

That the APPTB – with support from Borough of Haringey – should seek **UNESCO World Heritage Site gift-of-inscription** for the South-East wing of Alexandra Palace. To include the BBC television studios, control rooms, dressing and transmitter rooms, telecine area, tower offices and transmission tower

Features, benefits & advantages

1 Totem ■ AP is a huge, sprawling and eccentric building on a hill. It has a diffuse image and disparate parts. It is hard to brand, categorise or characterise

Our people's palace has suffered from an uncertain purpose and has lacked focus and a focal point

■ Alexandra Palace would benefit from a **symbol** and a main **theme**, meaningful nationally and internationally

■ a long-range strategic goal that would **sustain interest** and **survive changes** in personnel, trading-performance, trusteeship or form-of-governance

■ Ally Pally will remain the most important building in Haringey Borough: ideally, an appropriate goal should be something that **unites** our Trust and the Council in a project of common purpose

■ ideally, we should have a goal that is framed **broadly enough** at the outset to gain wide support. A goal to survive for the long run, which does not attempt to define itself in minutiae at the beginning;

The main UNESCO requirement

2 Trust ■ There has not always been full confidence in the council's intentions over the future of our Charitable Trust

■ the above Proposal conforms with our Trust's **charitable status** and both the letter and spirit of the remit. The Charity Commission is unlikely to have issues with this proposal

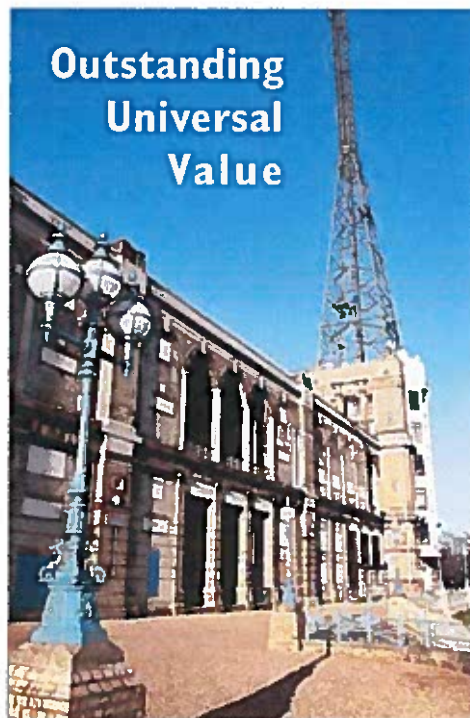
■ it is an **apolitical** goal, likely to **unify** different interests and attract a spectrum of support

■ it would act as a **reassurance** about the future under possible later independent status

■ project a **positive image** for AP & signal a fresh start & a new chapter for our Charity. **Signal** to all, that LBH is serious about AP; a signal not just about the Studios & not just to the BBC

■ application to UN Heritage Committee is within the power and **control** of the Trustee. Would not require negotiations with a lessee nor developer, nor incur huge legal costs

■ our charity and the council could collaborate on a **common goal**, likely to result in side-benefits for the Borough of Haringey ...



PTO



- if **confidence** could be re-built with respect to the Studios, then that could lead to their original contents & other exhibits – currently held elsewhere – returning to their rightful **home** (e.g. from EMI Archives, BBC Heritage and Bradford Museum)

- **support** from individuals and groups willing to contribute the time and effort needed towards fulfilling the requirements of UNESCO Heritage status (see Appendix)

- has the potential to speed up progress on governance and help pull the other threads together;

3 Target ■ A clear goal that Londoners would be proud to see and support

- provides a **strategic aim**, a transparent objective and offers **long-term continuity**. This goal posits a big prize, equal to the building's size and importance

- this ambition aims not higher, but *highest*. It would boost morale and lift everyone's sights

- a goal that is **independent** of the form of governance or the composition of the Trustees

- if achieved, **global awareness**.

UN World Heritage Sites are not ten-a-penny

- if an Application fell at the last hurdle (i.e. at the Paris Committee stage) it would not be a failure, as much good work – especially in the forming of **partnerships** – would have happened in order to advance it to that point;

4 Tone ■ The goal of a UNESCO World Heritage gift-of-inscription would set the tone: positive and prestigious

- a **virtuous circle**: likely to attract **high profile** and **influential Trustees** to a reformed Board

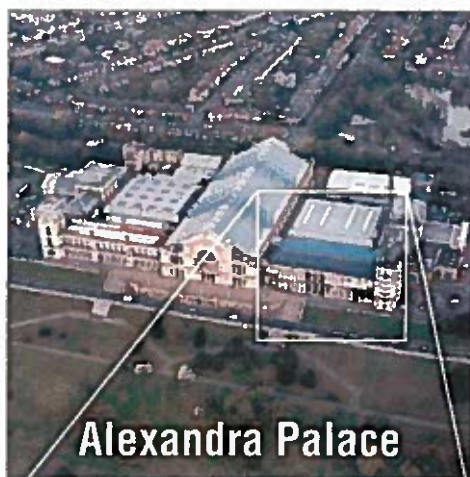
- attract the most prestigious **corporate sponsors** – and more likely if the municipal connection can be loosened

- attract **publicity** and attention to Ally Pally – for all the right reasons

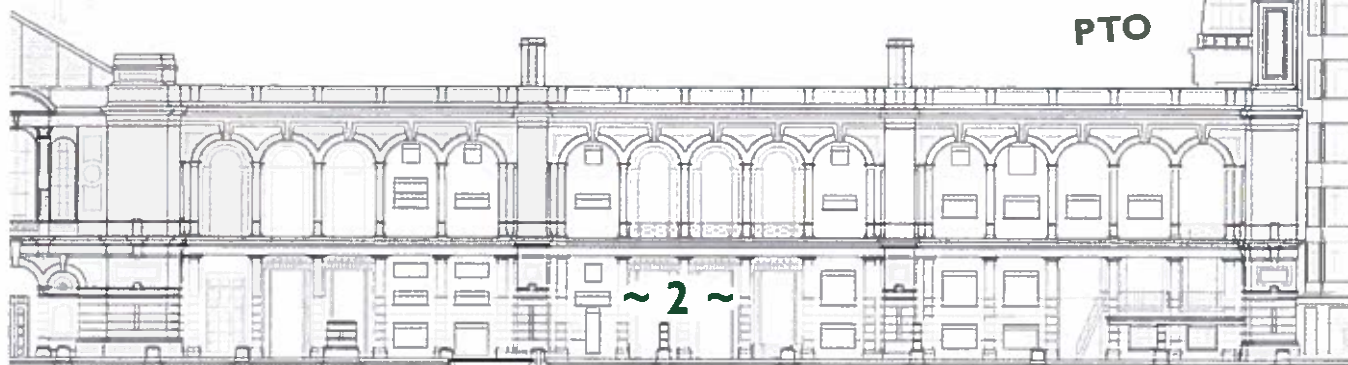
- act as an **impetus** to get things done; enthuses and galvanise others

- **Catalyst** – most physical parts of the palace depend for *their* amelioration, on improvement in *other* parts of the building and in the palace as a whole. The palace needs an overarching metaphysical goal that acts as a *catalyst*

- **Halo** – UNESCO world heritage is a goal or status that comes with an inevitable halo effect. The Studios are inseparable from the Palace



- Anything else that is proposed or established at AP (such as a hotel) would enjoy a reflected glory and an enhanced status from mere proximity. AP would become a destination in general for international visitors;



5 Territory ■ The site at Alexandra Palace is world-unique, surviving mainly because the abandoned television studios have been left undisturbed for so long

■ In Britain, there were earlier studios (Baird's) at Crystal Palace and at 133 Long Acre. But in 1936 at Ally Pally, all the elements came together to produce the world's first, public, scheduled, 'high-definition', television broadcasting service

■ Abroad, the only other surviving early television premises are probably those in St. Petersburg, which date from a similar time. However it seems that they have been extensively remodelled over the ensuing years and little of the original remains in a recognisable form

In the USA, the original studios at Schenectady and Farnsworth's San Francisco operation are long gone

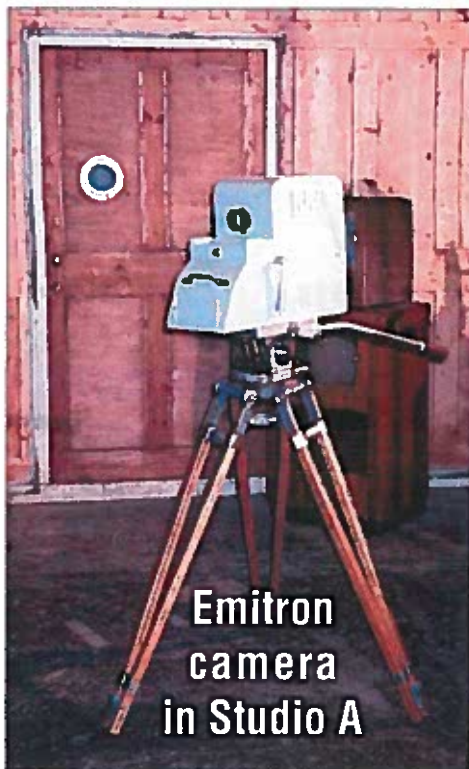
The Berlin Studio pre-dated the AP studios, but was destroyed in the closing days of World War Two. Unfortunately they were associated with Nazi propaganda

This leaves the south-east wing at Alexandra Palace as the world's oldest surviving television studios and station site

■ would lead to the Studios being brought up to the needed standard, with cost spread over time

■ BBC Studios A & B have the strongest claim to be the birthplace of regular public TV broadcasting in the UK – on 2nd November 1936 – and a strong claim for global significance

■ the case for boosting the status of *The London Television Station* has been already been set out in detail by the former Head of BBC Heritage Robin Reynolds and others (see Appendix);



Emitron camera in Studio A

7 Terms ■ The UN Committee annually confers World Heritage Site status on cultural, natural and 'mixed' sites deemed worthy

■ the relevant UNESCO cultural criteria are,

"to represent a masterpiece of human creative genius"

"exhibits an important interchange of human values, over a span of time or within a cultural area of the world, on developments in ... technology ..."

"bears a unique or exceptional testimony to a cultural tradition or to a civilization which is living or which has disappeared"

■ In general, outstanding universal value

■ Under certain conditions, listed sites can obtain funds from the World Heritage Fund. It is considered in the international community's interests to preserve each site;

PTO

6 Technical ■ Recognition is overdue that the Studios – widely known as the birthplace of modern television – are of the highest, international, historical importance

■ **Unique Selling Point** – the television history is one of the few aspects for which Alexandra Palace is known internationally and the only aspect that is unique



8 Touchstone ■ The precedent for UNESCO Heritage listing of the London Television Station, is the Grimeton Radio Station, a little inland from Varberg, Sweden

■ it comprises six masts and dates from 1924. It met Cultural Criteria [ii] & [iv] (below) and it was added to the UN World Heritage list in 2004 –

■ **Criterion (ii):** The Varberg radio station at Grimeton is an **outstanding monument representing the process of development of communication technology** in the period following the First World War

■ **Criterion (iv):** The Varberg radio station is an exceptionally well-preserved **example of a type of telecommunication centre**, representing the technological achievements by the early 1920s, as well as documenting the further development over some three decades

"[UNESCO also] Encourages the State Party [i.e. Sweden] to collaborate with other States Parties in considering a possible transboundary serial extension of similar properties [the 1936 London Television Station !!]



GLC plaque on the BBC Tower wall

■ this proposal has already come to the attention of central government. It is possible that material support may follow in future. Governments around the globe recognise the impact and benefit of such recognition;

10 Teaching ■ Education is one of the BBC Studios' strongest suits

■ a UNESCO World Heritage listing would come to the notice of educators: *globally*

■ **inspiration:** a history lesson combined with London's finest views. A vision for visitors of all ages and not least for the budding engineers amongst Haringey Borough's school children

■ **stimulation:** possible interactive displays for class visits, children & families

■ Middlesex University in 2004 proposed a Media Campus on this site

■ **encouragement:** it calls attention to a paradigm of towering electronic engineering achievement

9 Tourism ■ UN World Heritage Site status would boost awareness, attention and interest among potential international visitors

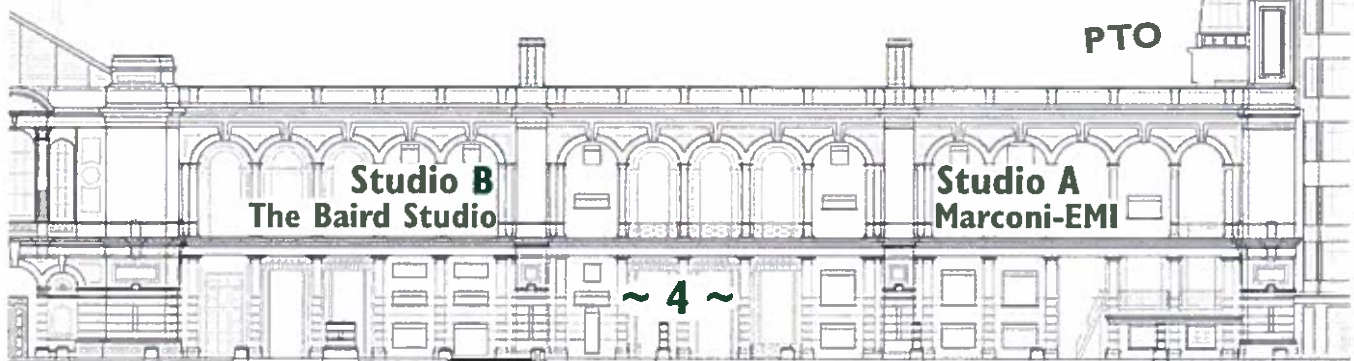
■ status would fit well with a tourist hotel

■ **co-branding with Bletchley Park?**

■ would leverage Alexandra Palace's natural advantages: arguably the best panoramic view of London from a hill, atop a park

■ **innovation:** co-branding with the underplayed regular exhibitor, the *Inventions Show?*

■ **understanding:** One of the things that is so important about what remains at AP, is the understanding it gives us about *how the technology developed* and how the whole operation was conceived and operated. Studios cannot operate in a vacuum, they need scenery shops, dressing rooms, makeup areas, canteen, offices as well as all the technical areas – most of this evidence still exists at AP



1 Tower ■ The corporate logo of the London Borough of Haringey (first page, top left corner) celebrates the first signals radiating from possibly the first purpose-built television tower in 1936

■ the transmission tower is physically far the tallest structure of the palace, visible from all over the Borough, from much of London and beyond. Moreover, it can be seen from the main line trains bringing people into London from the north. It is literally a high-profile and permanent reminder of the building's history and pioneering work, a much more noticeable link to the hidden studios

■ the Borough logo also features prominently on the shield on the Coat of Arms. Can Haringey Council return to its past pride in AP's history? [↗]

■ it makes sense to build (metaphorically) on this already listed structure. A UN World Heritage accolade (a gift of inscription) would represent the highest flag on the flagship of a rejuvenated Alexandra Palace

■ AP was the first and last time that a broadcaster tried to co-site a set of television studios next to high power transmitters and aerials

[that was done because at the planning stage it was not technically feasible to send the television signals more than a few hundred feet from the studio without degradation. Engineers had to cope with the problems caused by having a high radio frequency electric field in the studios

Even in the canteen it was possible to draw sparks by touching metal cutlery together whenever the transmitters were on! All subsequent studios were built some distance (often many miles) from the transmitter using the coaxial television cable developed by EMI in time for the 1937 Coronation];

12 Timing ■ Now is the right time to begin planning for the lengthy process of an Application

■ January 2009 marked the end of the long-held policy of sale of Ally Pally to a property developer, that had led to uncertainty about the BBC Studios

■ last year – 2011 – saw the 75th Anniversary of the birth of television at Alexandra Palace

■ this is the year of the Olympic Games, which will be televised from north-east London to a global audience. 54 years earlier and a relatively short distance away, the Olympics Games of 1948 were broadcast to London from the birthplace of TV – another possible tie-in;

■ the Proposal looks beyond the current cash cut-backs, trustees and governance structure

■ the BBC is moving out of White City in west London

■ while funding is at its tightest for the next couple of years, the envisaged public statement of intent and initial groundwork requires little expenditure in the short term

■ reinforces and may even requires, governance reform. One criterion for the UNESCO World Heritage Committee is assuring themselves of the sound stewardship and governance of candidate sites

■ former BBC staff at the Studios shortly before and after the war, will now be in their 80s or 90s. It would be good to have their input while they are still able to contribute



Borough Coat of Arms: Previous pride in progress

Overleaf:
Texts and
Testimony



Texts ■ Appendix; bibliography, credits and references

- *Historical Survey of Television at Alexandra Palace* Simon Vaughan, APTS Archivist (2003 – February)
- Mr John Trenouth, former television curator, *National Museum of Photography, Film & Television, Bradford*
- CIVIX – Media Campus Feasibility Study (2004 – August)
- *The Costs and Benefits of World Heritage Site Status in the UK* (Price Waterhouse Coopers). A major study commissioned by the DCMS (2007)
- AP Building Survey – the studio portions: costings from the Schedule of Developer Shell Repairs / Approximate Costs and 20-year Forward Forecast maintenance costs
- Front facade elevation credit: part of a thesis on AP by the Italian architect *Massimo Moscato*

Relevant submissions to English Heritage (for Grade II STAR status for the whole palace):

- Alexandra Palace – Listing Review – ‘BBC Studios’, page 3 (Mortimer MacSweeney; Design and Conservation Team; L.B.H. (2007–01–26))
- *The Television Studios at Alexandra Palace – the case for preservation*. Robin Reynolds, head of BBC Heritage (2007-01-22)

Testimony ■ This proposal is endorsed by groups and individuals:

- The Mayor of London *Boris Johnson*
- The International Committee for the Conservation of the Industrial Heritage (TICCIH), Secretary: *Dr. Stuart Smith OBE*
- UNESCO World Heritage site: the 1924 radio station at Grimeton, Varberg, Sweden CEO: *Dr. Lars Johansson*
- IET – Institution of Engineering and Technology (contact: *Alan Berry*)
- MPs: *Lynne Featherstone* (Hornsey & Wood Green, Government Minister) and *David Lammy*, (Tottenham & former Heritage Minister) ■ Lord *Tim Clement-Jones CBE*
- Former BBC Director-General *Greg Dyke*
- Former BBC Chairmen: *Lord Grade CBE* and *Gavyn Davies OBE*
- Hornsey Historical Society, Chair: *Keith Fawkes* ■ Media Historian *Iain Logie Baird*
- AP Television Group, Chair: *John Thompson*
- British Heritage Television Group, Chair: *Martin Allen* ■ AP Television Society, Chair: *Simon Vaughan*



Risks – The Application would:

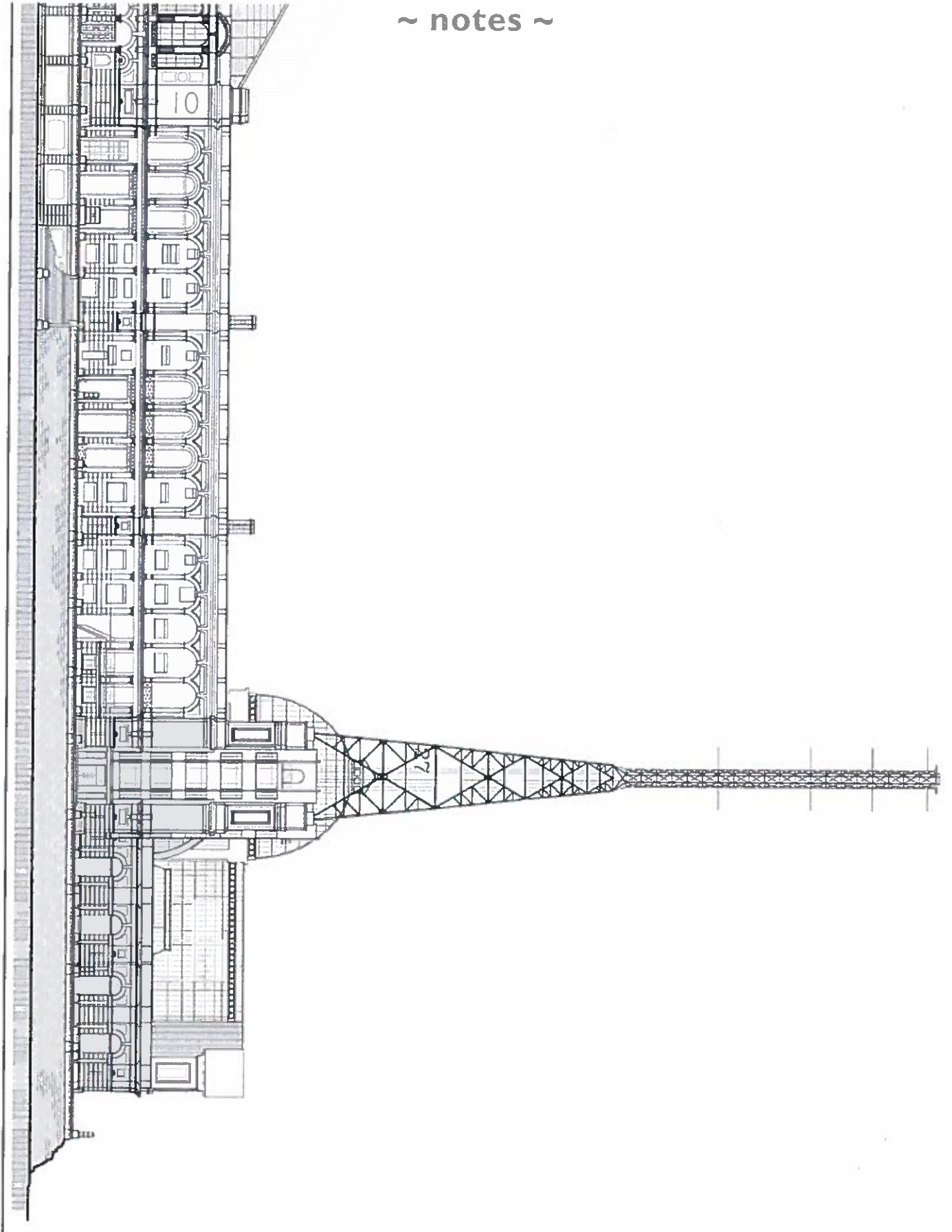
- probably take years to gain approval; ■ not be a complete solution to AP's problems;
- need council staff attention; ■ not progress easily without reform both in finance and in governance; ■ require long-term commitment by Haringey Council to prosecute
- probably need national & international lobbying; ■ once awarded, UNESCO World Heritage site status can be withdrawn if the site is not looked after

2012, February ~ Proposal to Alexandra Palace Trust Board: application for UNESCO World Heritage Site status

contact: C D Carter
clive.carter@gmail.com ~ 020 8341-3652



~ notes ~



[REDACTED]

From: development.control@haringey.gov.uk
Sent: 26 January 2015 14:21
To: DM & BC Support Team
Subject: Comment Received from Public Access

Application Reference No. : HGY/2014/3122 Site Address: Alexandra Palace Alexandra Palace
Way London N22 7AY London Comments by: [REDACTED]

From:

Association for Industrial Archaeology
The Ironbridge Institute
Ironbridge Gorge Museum
Coalbrookdale, Telford

TF8 7DX

Phone:

Email:

Submission: Neither

Comments: The Association for Industrial Archaeology notes the ambitious plan in respect of the Alexandra Palace. The Association for Industrial Archaeology supports the comments made in the submission of the Alexandra Park and Palace Conservation Area Advisory Committee. In particular, the Association for Industrial Archaeology notes that the eastern end of the Alexandra Palace was where the first BBC studios were located. These were the birthplace of broadcast television in 1936. This was both a major technical achievement as well as a creative one. The BBC used the site from then, 1936, until 1981. The external evidence for their first studios is the infilling of the arches in the southern facade/elevation. This early infilling is shown in a photograph of 1939 (on page 46 of part 3 of the Design and Access Statement) and appears to have been carried out with care and is in fact symmetrical. The result was that at that date the facade had symmetrical infilling. Later further infilling of arches was undertaken and this has altered the symmetry. The infilling, both the original and the later, are all part of the history of Alexandra Palace and its development as an entertainment venue. Although the Association for Industrial Archaeology is supportive of the re-use of Alexandra palace, it objects to the removal of the external, historic evidence of the BBC studios and therefore the most visible evidence of the birth of broadcast television. It is essential that the original infilling for the BBC studios; use in 1936 is retained as the external evidence of this important and historic development.

GREATER LONDON AUTHORITY

Mayor's Office

City Hall
The Queen's Walk
More London
London SE1 2AA
Switchboard: 020 7983 4000
Minicom: 020 7983 4458
Web: www.london.gov.uk

Clive Carter



Date: 03 MAY 2011

Dear Mr Carter

Re: UN World Heritage Site proposal

Thank you for writing to me seeking support of your application to UNESCO World Heritage Site Recognition for the south-east wing of Alexandra Palace.

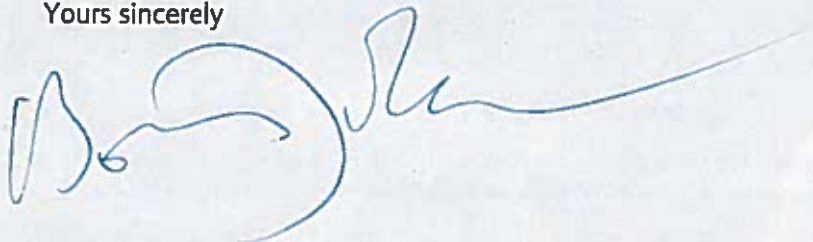
It is important that London's heritage is preserved, experienced and celebrated by Londoners and tourists. I am proud of our four UNESCO world heritage sites in the capital and would like to see more of our historical buildings achieve this status.

Alexandra Palace is an iconic feature of London, it has been a cultural and heritage hub since its opening in 1873. Since then, I believe it has built a good reputation for itself as a premier venue for world-class events and festivals.

I welcome your proposal to gain the world heritage status of the eastern part of the building, acknowledging that it was the first BBC public television transmitting centre from 1935 to 1956.

I would like to wish you all the best with your pursuit for UNESCO World Recognition for the site.

Yours sincerely



Boris Johnson
Mayor of London