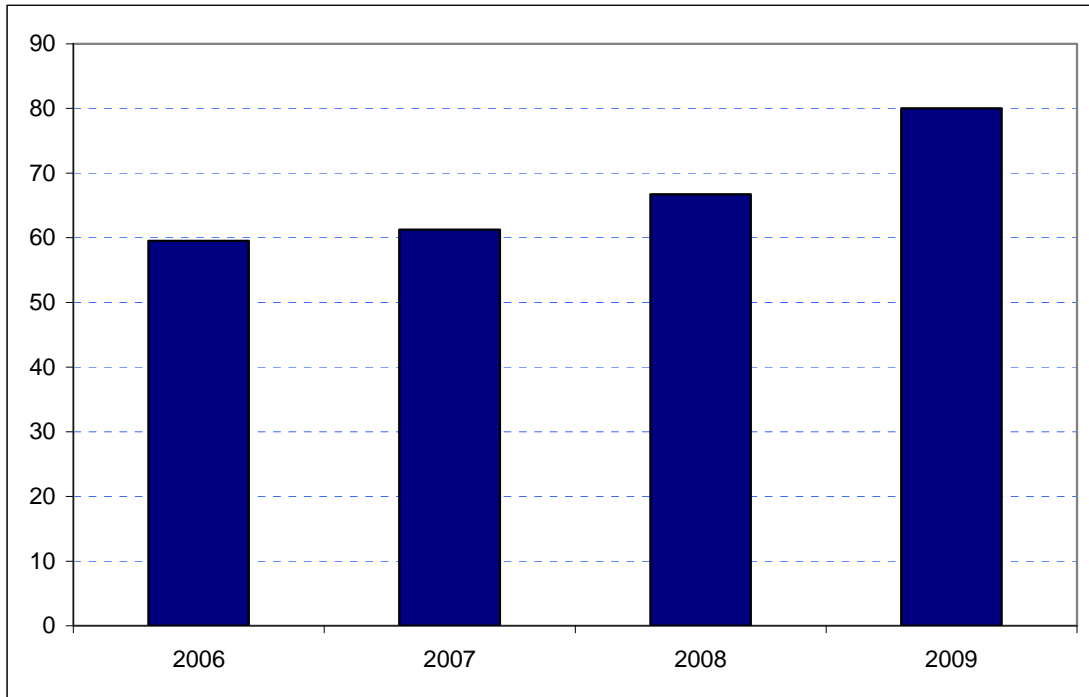


**Lewisham**  
**Borough Rank: 30**

Estimates in Figure 5.23 show a strong increase in Lewisham’s overseas visitor spend since 2006. Between 2006 and 2007 the increase was small: from £60 million to £61 million. Subsequently, increases have been greater: to £67 million in 2008 and £80 million in 2009.

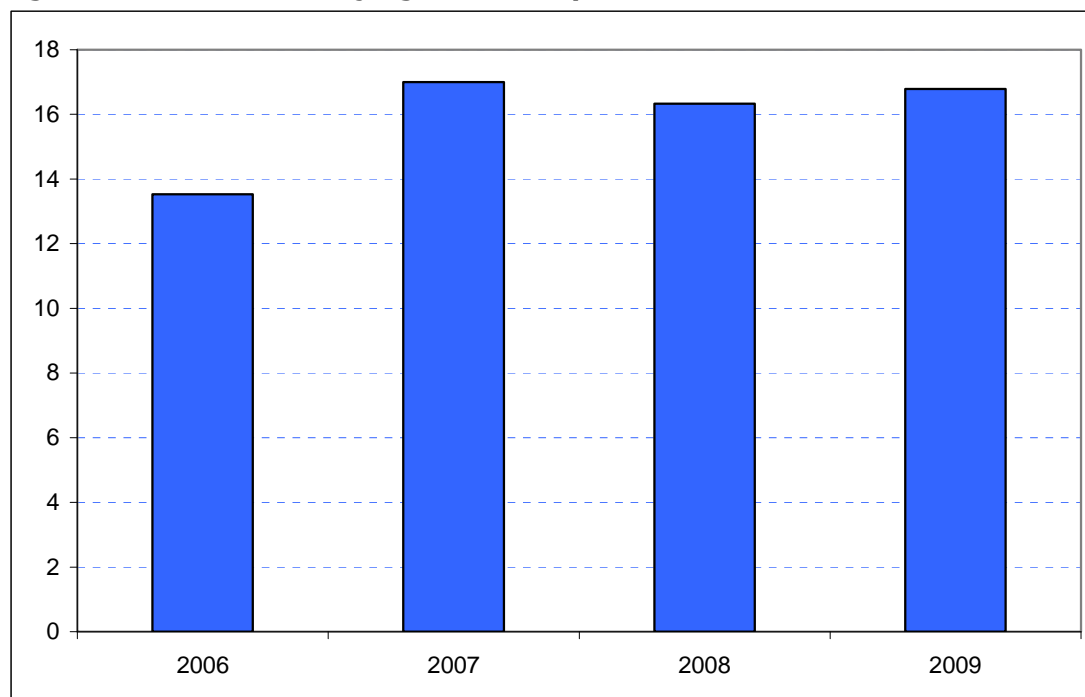
**Figure 5.23: Overseas tourism expenditure in Lewisham (£ millions)**



*Sources: IPS, BRES, LDA surveys and GLA Economics calculations*

This consistent pattern of year-on-year increases has also been largely reflected in domestic overnight visitor spend in the Borough since 2006 as shown in Figure 6.23. In 2006 domestic overnight spend was estimated to be under £14 million. Between 2007 and 2009 it has been broadly stable at around £17 million (£16 million in 2008).

**Figure 6.23: Domestic staying tourism expenditure in Lewisham (£ millions)**



Sources: UKTS, BRES, LDA surveys and GLA Economics calculations

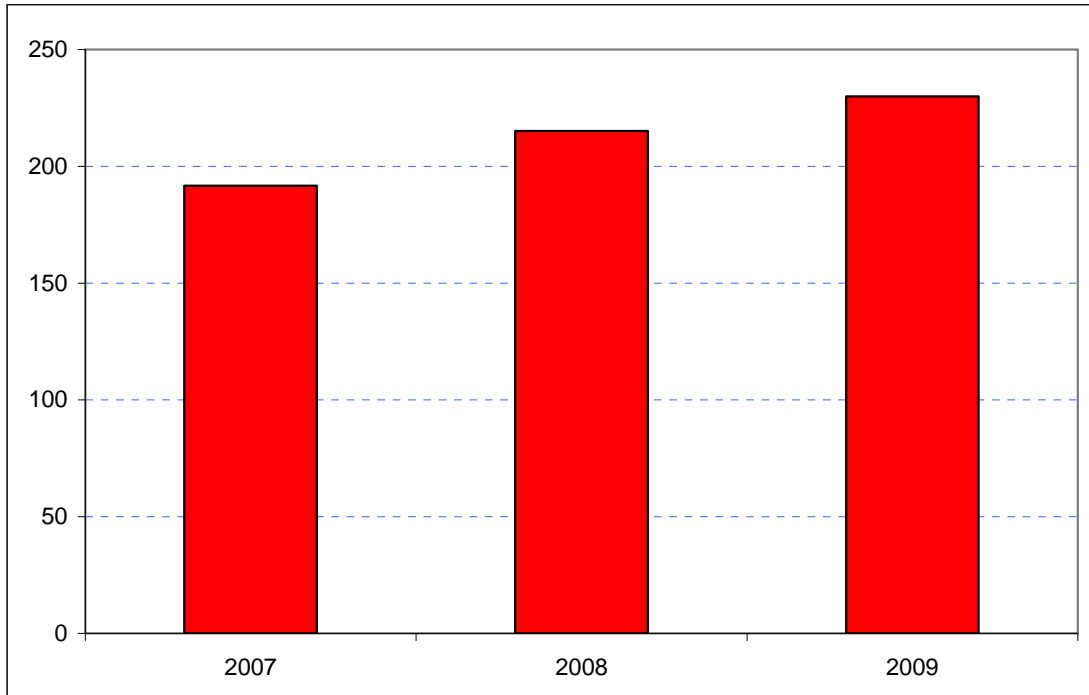
An experimental estimate of day visitor spend is provided in Tables 2a and 2b of Chapter 2. It should be emphasised that these are modelled estimates and further details of the data issues presented by day visitor tourism can be found in GLA Economics' Current Issues Note 29<sup>29</sup>. Details of the modelling and changes to it from previous LATI estimates can be found in the methodology section.

When the experimental day visitor estimates are included, the pattern of persistent increases from one year to the next continues – as shown in Figure 7.23. Spend rose from £193 million in 2007 to £215 million in 2008 and £230 million in 2009. Data for 2006 were excluded from the graphic as they would have introduced the additional problem of a change of survey basis for the day visitor estimates prior to 2007.

<sup>29</sup> <http://www.london.gov.uk/publication/estimating-contribution-leisure-day-visitors-londons-tourism-industry>

GLA Economics - Estimating the contribution of leisure day visitors to London's tourism industry (March 2011)

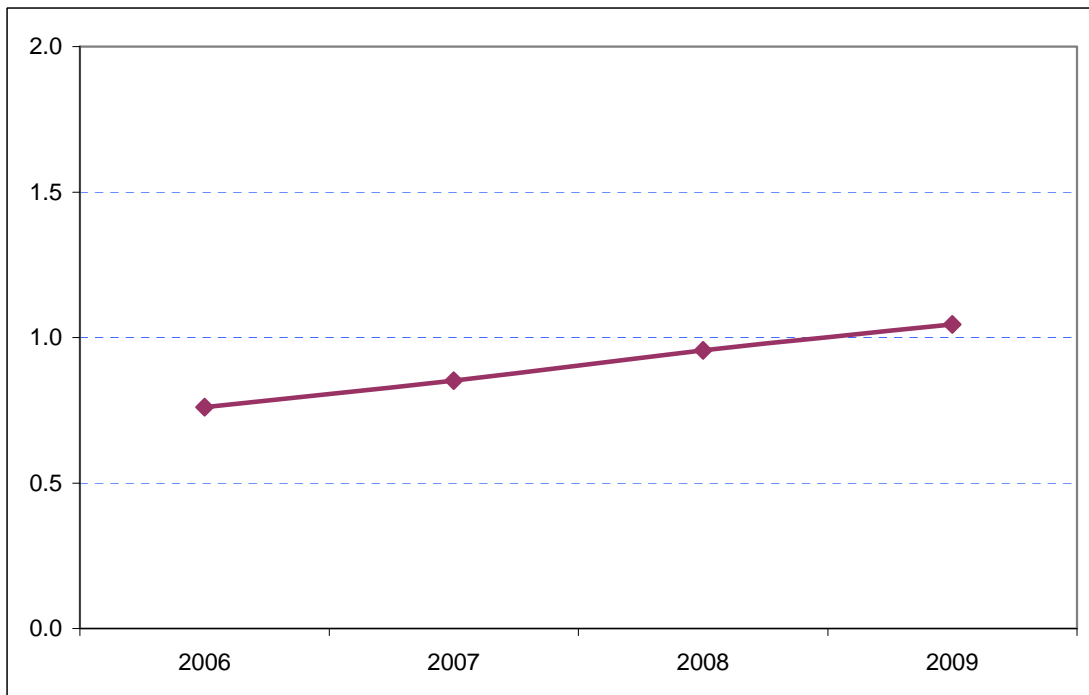
**Figure 7.23: Estimates of total tourism expenditure in Lewisham including experimental estimates of day visitor spend (£ millions)**



Sources: IPS, UKTS, BRES, LDA surveys and GLA Economics calculations

Figure 8.23 shows that Lewisham's share of total London tourism expenditure has also increased consistently over the period from 0.8 per cent in 2006 to over 1.0 per cent in 2009.

**Figure 8.23: Lewisham's estimated share of total London tourism expenditure (%)**



Sources: IPS, UKTS, BRES, LDA surveys and GLA Economics calculations