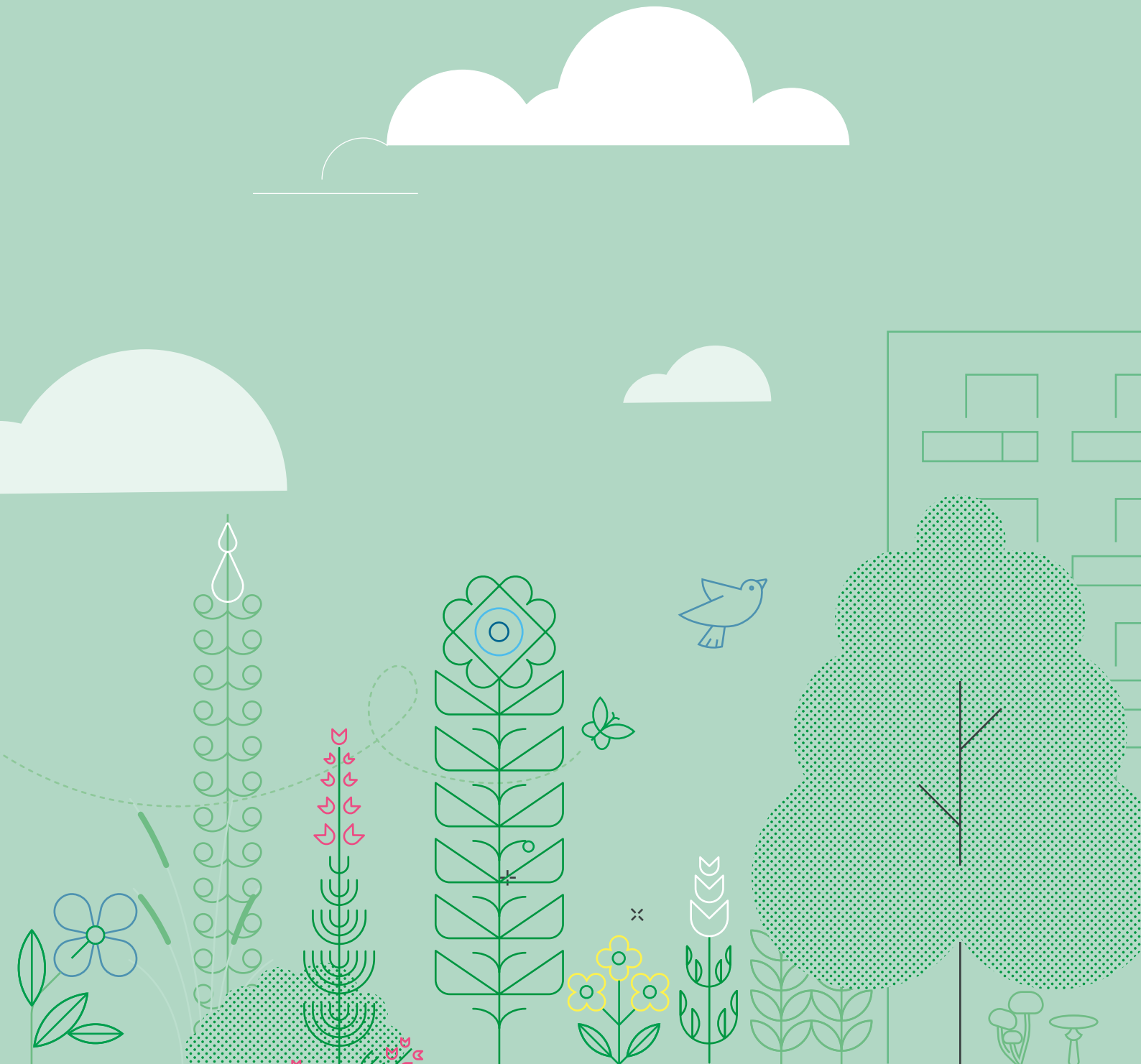


MAYOR OF LONDON

Priorities and measures



FOCUSED PRIORITY	PRIMARY MEASURES	SPECIES MEASURES
URBAN NATURE		
<p>Buildings</p> <p>Restore, expand, create, and connect spaces for nature in more urban environments. This particularly includes nature-positive features in / on buildings, and well-designed, nature-friendly lighting.</p>	<ul style="list-style-type: none"> • M3 – Wildlife shelter creation • M4 – Import suitable substrate for habitat creation • M13 – Bare ground management / creation • M19 – Greening structures • M20 – Sustainable drainage systems (SuDS) • M21 – Nesting sites 	<ul style="list-style-type: none"> • S22 – Bare ground creation/ clearance, chalk scrapes • S33 – Biodiverse green roof construction • S34 – Nest boxes • S35 – Swift bricks
<p>Parks and open spaces</p> <p>Increase ecological value and connectivity of parks and open spaces.</p>	<ul style="list-style-type: none"> • M1 – Exclusion measures • M2 – Wildlife connectivity • M3 – Wildlife shelter creation • M4 – Import suitable substrate for habitat creation • M5 – People management • M6 – Tree and woodland management • M7 – Woodland creation • M8 – Tree planting • M9 – Hedgerow creation • M10 – Hedgerow management • M11 – Scrub management • M12 – Scrub creation • M13 – Bare ground management / creation • M14 – Grassland and heathland creation • M15 – Grassland and heathland management • M16 – Watercourse restoration • M17 – Standing water creation • M18 – Standing water restoration / management • M20 – Sustainable drainage systems (SuDS) • M21 – Nesting sites 	<ul style="list-style-type: none"> • S2 – Fencing for protection of key species and re-introduction enclosures • S4 – Wildlife corridors installed on / under / over structures • S10 – Woodland glade restoration / creation • S16 – Tree planting • S17 – Hedgerow creation • S19 – Scrub cutting / removal • S22 – Bare ground creation/ clearance, chalk scrapes • S23 – Meadow creation • S25 – Grass and heathland cut and collect management

FOCUSED PRIORITY	PRIMARY MEASURES	SPECIES MEASURES
<p>Urban mosaic</p> <p>Restore, expand, create, and connect urban mosaic habitats, such as allotments, community gardens, churchyards, and cemeteries.</p>	<ul style="list-style-type: none"> • M2 – Wildlife connectivity • M3 – Wildlife shelter creation • M5 – People management • M6 – Tree and woodland management • M8 – Tree planting • M9 – Hedgerow creation • M11 – Scrub management • M12 – Scrub creation • M13 – Bare ground management / creation • M17 – Standing water creation • M18 – Standing water management / creation • M20 – Sustainable drainage systems (SuDS) • M21 – Nesting sites 	<ul style="list-style-type: none"> • S4 – Wildlife corridors installed on / under / over structures • S16 – Tree planting • S17 – Hedgerow creation • S19 – Scrub cutting / removal • S22 – Bare ground creation/ clearance, chalk scrapes • S34 – Nest boxes
<p>Private green space</p> <p>Increase ecological value and connectivity of private green space, such as residential gardens (including shared gardens) and school grounds. Opportunities to de-pave/remove hard surfaces, should be especially considered.</p>	<ul style="list-style-type: none"> • M2 – Wildlife connectivity • M3 – Wildlife shelter creation • M8 – Tree planting • M9 – Hedgerow creation • M10 – Hedgerow management • M15 – Grassland and heathland management • M17 – Standing water creation • M18 – Standing water restoration / management • M20 – Sustainable drainage systems (SuDS) • M21 – Nesting sites 	N/A
<p>Open mosaic habitat</p> <p>Restore, expand, create, and connect open mosaic habitats on previously developed land.</p>	<ul style="list-style-type: none"> • M3 – Wildlife shelter creation • M5 – People management • M6 – Tree and woodland management • M10 – Hedgerow management • M11 – Scrub management • M12 – Scrub creation • M13 – Bare ground management / creation • M14 – Grassland and heathland creation • M15 – Grassland and heathland management • M19 – Greening structures • M21 – Nesting sites 	<ul style="list-style-type: none"> • S19 – Scrub cutting / removal • S22 – Bare ground creation/ clearance, chalk scrapes

FOCUSED PRIORITY	PRIMARY MEASURES	SPECIES MEASURES
REWILDING AND REINTRODUCTION		
<p>Large scale rewilding</p> <p>Create large-scale nature recovery areas that support a diverse range of species in a complementary mix of habitats. This may include varying levels of management intervention with the aim of creating large areas of connected habitats.</p>	<p>Zone 1 – Enfield Chase</p> <ul style="list-style-type: none"> • M7 – Woodland creation • M10 – Hedgerow management • M15 – Grassland and heathland management • M16 – Watercourse restoration • M17 – Standing water creation <p>Zone 2 – Fairlop Plain to Dagnam Park</p> <ul style="list-style-type: none"> • M6 – Tree and woodland management • M15 – Grassland and heathland management • M16 – Watercourse restoration <p>Zone 3 – Ingrebourne Valley</p> <ul style="list-style-type: none"> • M3 – Wildlife shelter creation • M7 – Woodland creation • M16 – Watercourse restoration <p>Zone 4 – Havering East</p> <ul style="list-style-type: none"> • M5 – People management • M7 – Woodland creation • M10 – Hedgerow management <p>Zone 5 and 6 – Thames Marshes (North and South)</p> <ul style="list-style-type: none"> • M11 – Scrub management • M22 – Floodplain and intertidal management <p>Zones 7 and 8 – Croydon and Bromley Downs</p> <ul style="list-style-type: none"> • M2 – Wildlife connectivity • M7 – Woodland creation • M15 – Grassland and heathland management <p>Zone 9 – Gutteridge Farm and Ten Acre Woods</p> <ul style="list-style-type: none"> • M15 – Grassland and heathland management • M16 – Watercourse restoration 	<p>N/A</p>

FOCUSED PRIORITY	PRIMARY MEASURES	SPECIES MEASURES
<p>Large scale rewilding</p>	<p>Zone 10 – Colne Valley and Ruislip Woods</p> <ul style="list-style-type: none"> • M2 – Wildlife connectivity • M16 – Watercourse restoration • M17 – Standing water creation <p>Zone 11 – Harrow Weald to Stanmore</p> <ul style="list-style-type: none"> • M6 – Tree and woodland management • M16 – Watercourse restoration 	N/A
<p>Species re-establishment and re-introduction</p> <p>Reintroduce populations of locally extinct species, particularly where these would support the wider ecosystem and bring wider environmental benefits.</p>	<ul style="list-style-type: none"> • M1 – Exclusion measures • M6 – Tree and woodland management • M8 – Tree planting • M11 – Scrub management • M15 – Grassland and heathland management • M16 – Watercourse restoration 	N/A
GREEN CORRIDORS		
<p>Green corridors</p> <p>Restore, expand, create, and connect terrestrial linear habitats.</p>	<ul style="list-style-type: none"> • M2 – Wildlife connectivity • M3 – Wildlife shelter creation • M6 – Tree and woodland management • M8 – Tree planting • M9 – Hedgerow creation • M10 – Hedgerow management • M11 – Scrub management • M12 – Scrub creation • M13 – Bare ground management / creation • M14 – Grassland and heathland creation • M15 – Grassland and heathland management • M19 – Greening structures • M20 – Sustainable drainage systems • M21 – Nesting sites 	<ul style="list-style-type: none"> • S4 – Wildlife corridors installed on / under / over structures • S17 – Hedgerow creation • S18 – Hedgerow Management • S19 – Scrub cutting / removal • S21 – Scrub – Block planting • S22 – Bare ground creation/ clearance, chalk scrapes • S23 – Meadow creation • S25 – Grass and heathland cut and collect management • S34 – Nest boxes • S35 – Swift bricks

FOCUSED PRIORITY	PRIMARY MEASURES	SPECIES MEASURES
TREE AND WOODLAND		
<p>Wood pasture and parkland Restore, expand, create, and connect wood pasture and parkland.</p>	<ul style="list-style-type: none"> • M1 – Exclusion measures • M5 – People management • M6 – Tree and woodland management • M7 – Woodland creation • M8 – Tree planting • M11 – Scrub management • M14 – Grassland and heathland creation • M15 – Grassland and heathland management 	<ul style="list-style-type: none"> • S6 – Creation of standing deadwood • S8 – Veteranisation works • S9 – Woodland ride / woodland edge restoration / creation • S12 – Tree thinning works around veteran trees • S14 – Wood pasture planting • S24 – Conservation grazing
<p>Ancient trees and woodland Improve management of ancient trees, veteran trees and ancient woodlands to increase their longevity and improve resilience.</p>	<ul style="list-style-type: none"> • M1 – Exclusion measure • M6 – Tree and woodland management 	<ul style="list-style-type: none"> • S2 – Fencing and re-introduction enclosures • S6 – Creation of standing deadwood • S7 – Creation of deadwood / woodchip piles • S8 – Veteranisation works • S9 – Woodland ride / woodland edge restoration / creation • S11 – Coppicing
<p>Wet woodland Restore, expand, create, and connect wet woodland, particularly in areas at risk of flooding.</p>	<ul style="list-style-type: none"> • M1 – Exclusion measures • M6 – Tree and Woodland Management • M7 – Woodland creation • M11 – Scrub management • M12 – Scrub creation • M16 – Watercourse restoration • M17 – Standing water creation • M18 – Standing water restoration / management • M22 – Floodplain and intertidal management 	<ul style="list-style-type: none"> • S10 – Woodland glade restoration / creation • S11 – Coppicing • S15 – Woodland - natural regeneration • S20 – Scrub - natural regeneration • S28 – Natural flood management • S31 – Pond and lake restoration / management
<p>Orchards Restore, expand, create, and connect traditional orchards, and manage them in a nature-friendly way.</p>	<ul style="list-style-type: none"> • M6 – Tree and woodland management • M8 – Tree planting • M14 – Grassland and heathland creation • M15 – Grassland and heathland management 	<ul style="list-style-type: none"> • S13 – Orchard conservation management • S16 – Tree planting

FOCUSED PRIORITY	PRIMARY MEASURES	SPECIES MEASURES
<p>Trees and hedgerows</p> <p>Expand hedgerow and tree cover outside of woodlands, especially on streets in areas of low canopy cover and habitat connectivity, and improve resilience of existing tree populations and hedgerows.</p>	<ul style="list-style-type: none"> • M6 – Tree and woodland management • M8 – Tree planting • M9 – Hedgerow creation • M10 – Hedgerow management 	N/A
<p>Woodland</p> <p>Restore, expand, create, and connect species-rich broadleaved, mixed and yew woodland.</p>	<ul style="list-style-type: none"> • M1 – Exclusion measures • M5 – People management • M6 – Tree and woodland management • M7 – Woodland creation • M8 – Tree Planting • M16 – Watercourse restoration 	<ul style="list-style-type: none"> • S9 – Woodland ride / woodland edge restoration / creation • S10 – Woodland glade restoration / creation • S11 – Coppicing • S12 – Tree Thinning • S15 – Woodland - natural regeneration • S16 – Tree planting
WATERBODIES AND WATERWAYS		
<p>Ponds and lakes</p> <p>Restore, expand and create a network of ponds and lakes. This includes creating a variety of pond and lake types, including ephemeral ponds.</p>	<ul style="list-style-type: none"> • M1 – Exclusion measures • M2 – Wildlife connectivity • M3 – Wildlife shelter creation • M5 – People management • M6 – Tree and woodland management • M11 – Scrub management • M15 – Grassland and heathland Management • M16 – Watercourse Restoration • M17 – Standing water creation • M18 – Standing water restoration / management • M20 – Sustainable Drainage Systems (SuDS) • M21 – Nesting sites 	<ul style="list-style-type: none"> • S1 – Invasive species management • S4 – Wildlife corridors installed on / under / over structures • S19 – Scrub cutting / removal • S25 – Grass and heathland cut and collect management • S30 – Aquatic vegetation management • S31 – Pond and lake restoration / management • S36 – Nest banks for bank-nesting birds

FOCUSED PRIORITY	PRIMARY MEASURES	SPECIES MEASURES
<p>Rivers and streams</p> <p>Restore and connect river and stream corridors in terms of function, physical structure, water quality and riparian habitat.</p>	<ul style="list-style-type: none"> • M1 – Exclusion measures • M2 – Wildlife connectivity • M4 – Import suitable substrate for habitat creation • M5 – People management • M6 – Tree and woodland management • M8 – Tree planting • M11 – Scrub management • M12 – Scrub creation • M16 – Watercourse restoration • M20 – Sustainable Drainage Systems (SuDS) • M21 – Nesting sites 	<ul style="list-style-type: none"> • S1 – Invasive species management • S3 – Removal or mitigation of barriers to fish passage (such as weirs) • S28 – Natural flood management • S29 – River restoration (including in-channel enhancement) • S30 – Aquatic vegetation management • S36 – Nest banks for bank-nesting birds
<p>Canals and reservoirs</p> <p>Improve biodiversity value of canals and reservoirs. This includes in-water improvements as well as improvements to the banks, while still allowing commercial and recreational use of them, as required.</p>	<ul style="list-style-type: none"> • M2 – Wildlife connectivity • M5 – People management • M11 – Scrub management • M16 – Watercourse restoration • M18 – Standing water restoration / management • M21 – Nesting sites 	<ul style="list-style-type: none"> • S1 – Invasive species management • S4 – Wildlife corridors installed on / under / over structures • S30 – Aquatic vegetation management • S31 – Pond and lake restoration / management • S36 – Nest banks for bank-nesting birds
<p>Chalk streams</p> <p>Restore and maintain chalk rivers and streams.</p>	<ul style="list-style-type: none"> • M1 – Exclusion measures • M2 – Wildlife connectivity • M4 – Import suitable substrate for habitat creation • M5 – People management • M6 – Tree and woodland management • M8 – Tree planting • M11 – Scrub management • M12 – Scrub creation • M16 – Watercourse restoration • M20 – Sustainable Drainage Systems (SuDS) • M21 – Nesting sites 	<ul style="list-style-type: none"> • S1 – Invasive species management • S3 – Removal or mitigation of barriers to fish passage (such as weirs) • S28 – Natural flood management • S29 – River restoration (including in-channel enhancement) • S30 – Aquatic vegetation management • S36 – Nest banks for bank-nesting birds

FOCUSED PRIORITY	PRIMARY MEASURES	SPECIES MEASURES
WETLAND		
<p>Floodplain</p> <p>Restore, expand, create, and connect floodplain habitats, including floodplain grazing marsh, and ditches.</p>	<ul style="list-style-type: none"> • M11 – Scrub management • M12 – Scrub creation • M15 – Grassland and heathland management • M16 – Watercourse restoration • M17 – Standing water creation • M18 – Standing water restoration / management • M20 – Sustainable drainage systems (SuDS) • M22 – Floodplain and intertidal management 	<ul style="list-style-type: none"> • S25 – Grass and heathland cut and collect management • S31 – Pond and lake restoration / management
<p>Tidal Thames margins</p> <p>Restore, expand, create, and connect habitats along the tidal Thames and its foreshore for species that rely on these areas, where appropriate. This includes intertidal habitat, coastal grazing marsh, coastal saltmarsh, and coastal vegetated shingle.</p>	<ul style="list-style-type: none"> • M5 – People management • M15 – Grassland and heathland Management • M16 – Watercourse restoration • M19 – Greening structures • M22 – Floodplain and intertidal management 	<ul style="list-style-type: none"> • S25 – Grass and heathland cut and collect management • S28 – Natural flood management • S37 – Floodplain and intertidal management
<p>Fen, marsh and swamp</p> <p>Restore, expand, create, and connect fen, marsh, and swamp, including peatland.</p>	<ul style="list-style-type: none"> • M2 – Wildlife connectivity • M11 – Scrub management • M15 – Grassland and heathland management • M16 – Watercourse restoration • M18 – Standing water restoration / management • M21 – Nesting sites • M22 – Floodplain and intertidal management 	<ul style="list-style-type: none"> • S4 – Wildlife corridors installed on / under / over structures • S19 – Scrub cutting / removal • S25 – Grass and heathland cut and collect management • S31 – Pond and lake restoration / management • S32 – Reedbed restoration / management • S36 – Nest banks for bank-nesting birds • S37 – Floodplain and intertidal management
<p>Reedbeds</p> <p>Restore, expand, create, and connect reedbeds.</p>	<ul style="list-style-type: none"> • M1 – Exclusion measures • M2 – Wildlife connectivity • M16 – Watercourse restoration • M18 – Standing water restoration / management • M22 – Floodplain and intertidal management 	<ul style="list-style-type: none"> • S1 – Invasive species management • S4 – Wildlife corridors installed on / under / over structures • S31 – Pond and lake restoration / management • S32 – Reedbed restoration / management

FOCUSED PRIORITY	PRIMARY MEASURES	SPECIES MEASURES
GRASSLAND, HEATHLAND, SCRUB, AND FARMLAND		
<p>Acid grassland Restore, expand, create, and connect acid grassland.</p>	<ul style="list-style-type: none"> • M2 – Wildlife connectivity • M4 – Import suitable substrate for habitat creation • M5 – People management • M6 – Tree and woodland management • M11 – Scrub management • M13 – Bare ground management / creation • M14 – Grassland and heathland creation • M15 – Grassland and heathland management 	<ul style="list-style-type: none"> • S4 – Wildlife corridors installed on / under / over structures • S24 – Conservation grazing • S25 – Grass and heathland cut and collect management
<p>Heathland Restore, expand, create, and connect heathland.</p>	<ul style="list-style-type: none"> • M4 – Import suitable substrate for habitat creation • M6 – Tree and woodland management • M11 – Scrub management • M13 – Bare ground management / creation • M14 – Grassland and heathland creation • M15 – Grassland and heathland management 	<ul style="list-style-type: none"> • S19 – Scrub cutting / removal • S22 – Bare ground creation/ clearance, chalk scrapes • S24 – Conservation grazing • S25 – Grass and heathland cut and collect management
<p>Chalk grassland Restore, expand, create, and connect calcareous grassland.</p>	<ul style="list-style-type: none"> • M1 – Exclusion measures • M2 – Wildlife connectivity • M4 – Import suitable substrate for habitat creation • M5 – People management • M6 – Tree and woodland management • M11 – Scrub management • M13 – Bare ground management / creation • M14 – Grassland and heathland creation • M15 – Grassland and heathland management 	<ul style="list-style-type: none"> • S4 – Wildlife corridors installed on / under / over structures • S19 – Scrub cutting / removal • S22 – Bare ground creation/ clearance, chalk scrapes • S24 – Conservation grazing • S25 – Grass and heathland cut and collect management

FOCUSED PRIORITY	PRIMARY MEASURES	SPECIES MEASURES
<p>Lowland meadow</p> <p>Restore, expand, create, and connect lowland meadows.</p>	<ul style="list-style-type: none"> • M1 – Exclusion measures • M2 – Wildlife connectivity • M5 – People management • M11 – Scrub management • M13 – Bare ground management / creation • M14 – Grassland and heathland creation • M15 – Grassland and heathland management • M21 – Nesting sites 	<ul style="list-style-type: none"> • S4 – Wildlife corridors installed on / under / over structures • S19 – Scrub cutting / removal • S22 – Bare ground creation/ clearance, chalk scrapes • S25 – Grass and heathland cut and collect management • S26 – Grassland and heathland cutting regimes suitable for ground nesting birds
<p>Scrub</p> <p>Restore, expand, create, and connect scrub habitat.</p>	<ul style="list-style-type: none"> • M3 – Wildlife shelter creation • M5 – People management • M6 – Tree and woodland management • M10 – Hedgerow Management • M11 – Scrub management • M12 – Scrub creation 	<ul style="list-style-type: none"> • S19 – Scrub cutting / removal • S20 – Scrub – natural regeneration
<p>Arable and horticultural</p> <p>Restore farmland and field edges for biodiversity, where appropriate.</p>	<ul style="list-style-type: none"> • M3 – Wildlife shelter creation • M5 – People management • M9 – Hedgerow creation • M10 – Hedgerow management • M11 – Scrub management • M12 – Scrub creation • M13 – Bare ground management / creation • M15 – Grassland and heathland management • M16 – Watercourse restoration • M17 – Standing water creation • M18 – Standing water restoration / management • M22 – Floodplain and intertidal management 	<ul style="list-style-type: none"> • S5 – Path / entrance realignment / creation and interpretation / signage • S18 – Hedgerow Management • S20 – Scrub – natural regeneration • S25 – Grass and heathland cut and collect management • S26 – Grassland and heathland cutting regimes suitable for ground nesting birds • S27 – Conservation headland creation / management • S31 – Pond and lake restoration / management • S37 – Floodplain and intertidal management

FOCUSED PRIORITY	PRIMARY MEASURES	SPECIES MEASURES
MICRO-HABITATS		
<p>Deadwood Increase deadwood availability, including standing deadwood.</p>	<ul style="list-style-type: none"> • M1 – Exclusion measures • M3 – Wildlife shelter creation • M5 – People management • M6 – Tree and woodland management • M10 – Hedgerow management • M11 – Scrub management • M21 – Nesting sites 	<ul style="list-style-type: none"> • S6 – Creation of standing deadwood • S7 – Creation of deadwood / woodchip piles • S8 – Veteranisation works • S12 – Tree thinning
<p>Sand Restore, expand, create, and connect sand habitats.</p>	<ul style="list-style-type: none"> • M3 – Wildlife shelter creation • M5 – People management • M11 – Scrub management • M13 – Bare ground management / creation • M21 – Nesting sites • M22 – Floodplain and intertidal management 	<ul style="list-style-type: none"> • S19 – Scrub cutting / removal • S22 – Bare ground creation/ clearance, chalk scrapes • S37 – Floodplain and intertidal management