

London Climate Change Adaptation Review

Terms of Reference (DRAFT)

In the context of accelerating climate change impacts on London, the Mayor of London is commissioning a review to assess London's preparedness in adapting to the impacts of climate change. The London Climate Change Adaptation Review ('The Review') will be independent of the Mayor and the GLA Group.

The Review will explore options for London's adaptation to climate change impacts by assessing the actions needed at national, regional, and local levels to ensure we can reduce these impacts on people, infrastructure, environment and the economy in London. The outputs of the review will provide a clear set of recommendations to guide London's preparation for climate hazards and will develop a strategic direction for London's adaptation planning, identifying main areas of concern and possible responses.

The Mayor of London will appoint an independent chair with responsibility for the review and ultimately providing recommendations to the Mayor.

It should also consider interdependencies between and within sectors with regard to impacts. The Review will not focus on identifying and setting out London's main climate risks in any detail as the risks are well understood. The Review is not intended to assess how London responds to weather related emergencies when they occur.

The Review will be led by an appointed Chair who will set out their preferred methodology for making this assessment.

The Review should:

- consider representations from across sectors and communities in London including environment, transport, housing, health, business, insurance, local and regional government.
- It will focus on long-term adaptation and climate resilience. It will consider emergency response in so far as that sector needs to adapt to growing climate risk.
- It will consider the unequal distribution of climate impacts and capacity to respond/adapt.
- It will make recommendations to ensure London accelerates towards being better adapted to climate risk.
- The recommendations should be focussed on London broadly and not solely the GLA.
- The review will not define climate resilience, nor will it set adaptation targets or standards for London although this is likely to be a recommendation for future work.
- The review will not investigate the climate risks facing London as these are already well understood.

Methodology:

While these terms of reference are not prescriptive about the approach taken to arrive at the final recommendations, the Chair should finalise the methodology working with the pro bono consultant team and expert advisors. The final approach should be agreed with the Mayor's

Office. Suggested approaches to gathering evidence to inform the review include, but are not limited to

- Stakeholder mapping
- Public call for submissions
- Targeted stakeholder call for evidence
- Steering group(s) meetings
- Roundtable meeting(s)
- Interviews

This draft Terms of Reference will be updated at the first group meeting when the methodology and ways of working are confirmed.

Staffing, roles and responsibilities:

Chair

To ensure integrity, the chair will be independent. The Greater London Authority will set out the guiding principles and scope of the review, to ensure key objectives are met. The chair will help to shape these working with the core team (below), within the parameters set by the GLA (or Mayor). The detailed terms and role of the chair will be set out in the appointment letter.

Core team

The independent chair will be supported by a pro bono consultancy team (see appendix 1). Collectively they will define the final methodology for the review, ahead of approval by the Mayor or delegate. In addition, the chair and pro bono consultancy team will be responsible for delivering the review, implementing the agreed methodology including evidence gathering, analysis and report drafting. [This section will be updated with details of lead and contributing consultants and time expectations]

Expert Advisors

The GLA will work with the Chair to identify a diverse and representative expert panel of between six and eight members. Their role will be to ensure that the review takes account of wider climate change adaptation expertise and input. The Panel will act as a sounding board and provide advice, peer review and challenge.

Additional support

The GLA will support the review to provide project, secretariat and administrative support. The GLA will also work with the core team to coordinate GLA policy expertise input from across relevant directorates.

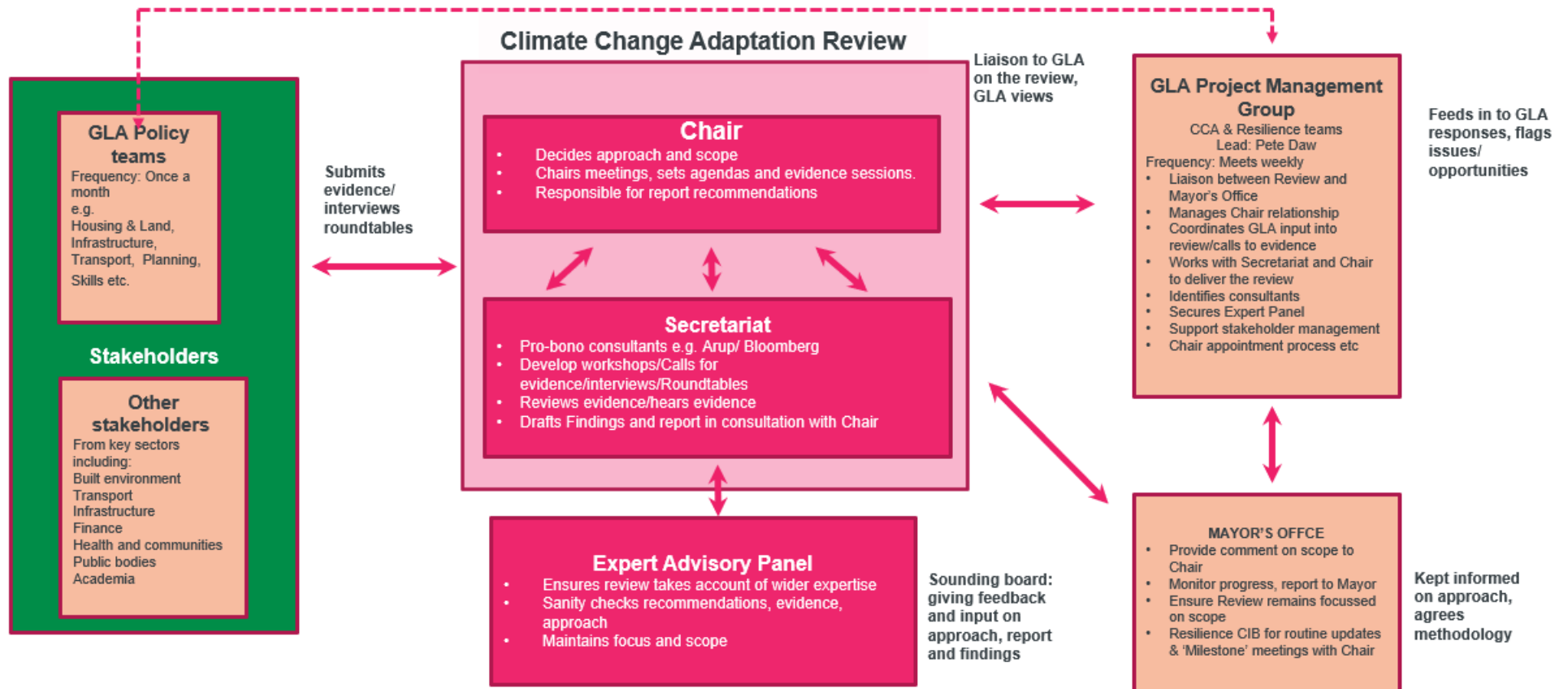
Governance:

The review will report periodically to the GLA Corporate Investment Board - Resilience Committee, chaired by the Chief of Staff. This will be the principal vehicle to provide regular updates to the Mayor on the review. The Deputy Mayor for Environment & Energy will be invited to join for these items. Additionally, the chair will meet with the Chief of Staff, and Deputy Mayors for Environment & Energy and Fire & Resilience at agreed milestones through the review.

Review timescales:

The Review should complete by the end of December 2023 at the latest (appendix 2).

Appendix 1



Appendix 2

| Workstream | May '23 | Jun '23 | Jul '23 | Aug '23 | Sep '23 | Oct '23 | Nov '23 | Dec '23 | Jan '24 | Feb '24 |
|---------------------------------|-----------------|---|---------|---------|------------------|------------------------|-------------------------------|---------|---------|---------|
| Project start up | Chair Appointed | Workplan developed | | | | | | | | |
| Research and evidence gathering | | Stakeholder list Literature Review Design workshops + consultation Workshops interviews | | | | | | | | |
| Analysis of evidence | | | | | Compile Findings | | | | | |
| Recommendation testing | | | | | | Recommendation testing | | | | |
| Report finalisation | | | | | | | Report writing & finalisation | | | |