

A stylized illustration of a city skyline. On the left, there are several tall buildings of varying heights. In the center, there are three green trees of different sizes. To the right of the trees, a person is walking and a person is riding a bicycle. In the foreground, there is a large blue circle containing three smaller circles, each with a sad face (a downward-curving mouth). The entire scene is set against a light blue background with a subtle grid pattern.



# Contents

Foreword	3
----------	---

Introduction	4
--------------	---

The LUFP Actions Update at a glance	5
-------------------------------------	---

Does this Actions Update replace the London Urban Forest Plan?	6
--	---

Why an Actions Update?	6
------------------------	---

How was the Actions Update developed?	8
---------------------------------------	---

What is the Partnership keen to emphasise through this update?	9
--	---

Further information on the London Urban Forest Partnership's work	9
---	---

A new set of priority actions for London's urban forest	10
---	----

How to use the Actions Refresh	11
--------------------------------	----

> Protect and manage	
----------------------	--

Goal 1: Resilience	12
--------------------	----

Goal 2: Management	14
--------------------	----

Goal 3: Planning	16
------------------	----

Goal 4: Protection	18
--------------------	----

> Grow and expand	
-------------------	--

Goal 5: Woodlands	19
-------------------	----

Goal 6: Street trees	21
----------------------	----

Goal 7: Trees in green estates	23
--------------------------------	----

Goal 8: Tree data	25
-------------------	----

> Promote and support	
-----------------------	--

Goal 9: Community stewardship	27
-------------------------------	----

Goal 10: Circular economy	29
---------------------------	----

Goal 11: Workforce and innovation	30
-----------------------------------	----

Goal 12: Coordination and resourcing	32
--------------------------------------	----

Monitoring progress and outcomes	34
----------------------------------	----

References and acknowledgements	
---------------------------------	--

References	39
------------	----

Acknowledgements	40
------------------	----

# Foreword



Mete Coban, MBE

The climate emergency is the greatest global threat we face today, and its impacts are not felt equally. Communities already facing poverty, deprivation and health inequalities are disproportionately affected by flooding, drought, extreme heat and poor air quality.

We know that green infrastructure, particularly trees, is crucial in tackling these risks. Trees provide essential cooling, reduce flood risks, and improve overall wellbeing. They bring nature into our everyday lives and offer countless benefits to our city. Every Londoner deserves access to trees.

Creating a tree-rich city is not only vital for our environment, but it also presents an opportunity for economic growth, especially for young people, by creating careers in urban and community forestry.

The Mayor and I are committed to continue supporting the London Urban Forest Partnership to ensure our city makes the most of the benefits trees and woodlands can offer. This updated action plan ensures that we focus our collective investment where it's needed most, working towards a fairer, greener city for everyone.

**Mete Coban, MBE**

Deputy Mayor for Energy and Environment  
Mayor of London



Dr Anna Brown

It is inspiring to see the London Urban Forest Partnership's dedication to addressing issues that require joined-up, cross-sector collaboration. This is crucial in a setting as complex and extensive as London's.

The new set of actions identified here builds on the solid achievements the London Urban Forest Plan has made over the past five years.

Key challenges such as managing the threats posed by pests, diseases and climate change, while fostering community stewardship as well as knowledge, innovation, and professional skill development are critical areas of work. So is the design of pathways for woodland creation and other treescape enhancements, providing a multitude of much needed social, environmental and economic benefits.

Thanks to this sustained collaboration, all organisations and volunteers involved are positioned to deliver bigger and better outcomes, helping us to tackle some of society's biggest challenges with thriving trees, woods and forests in this city. Ultimately, all Londoners benefit from this transformative partnership.

**Dr Anna Brown**

Director of Forest Services  
Forestry Commission





# Introduction

This Actions Update provides a fresh set of priority actions to guide the London Urban Forest Partnership's work in protecting, managing and enhancing London's trees, woodlands and other woody habitats such as hedgerows, over the next five years.

It builds upon the solid achievements the partnership has delivered since 2020, responds to changes in context and shapes new opportunities to ensure London makes the most of the manifold benefits trees and woodlands can provide.

< View from Severndroog Castle,  
Shooter's Hill, Greenwich.  
© Paul Wood



Fig. 1

# The 2025 LUFP Actions Update at a glance

This updated action plan is structured around the **3 themes** and **12 goals** defined in the **London Urban Forest Plan (LUFP)**. 75 new actions and an updated set of KPIs are identified to continue delivering on these ambitions over the next five years. This fresh work programme also reflects **4 principles** identified during the discussions held for its development as important success factors for future delivery.

## Principles for success



Resilience



Equity &amp; Inclusion



Collaboration



Capacity

## LUFP themes and goals

1



Theme 1

### Protect and manage

Goal 1: Resilience

Goal 2: Management

Goal 3: Planning

Goal 4: Protection

2



Theme 2

### Grow and expand

Goal 5: Woodlands

Goal 6: Street trees

Goal 7: Trees in estates

Goal 8: Tree data

3



Theme 3

### Promote and support

Goal 9: Community stewardship

Goal 10: Circular economy

Goal 11: Workforce and innovation

Goal 12: Coordination and resourcing

## New work programme and KPIs

75

new or  
updated actions

KPIs  
updated

## Does this Actions Update replace the London Urban Forest Plan?

No. This Actions Update should be read alongside the [London Urban Forest Plan](#) (LUFP), which provides important background information.

The LUFP sets out the key issues London faces for protecting and enhancing the benefits people and wildlife derive from trees, woodlands, and other woody habitats, such as hedgerow and scrubs.

As shown in fig. 1 above, the LUFP also provides a strategic framework to guide collective investment to (1) protect, (2) expand and (3) support London's urban forest. These three themes are supported by 12 goals which are further broken down into specific actions. While some amendments have been made here to the wording of the goals, this framework remains the foundation for the new actions presented below.

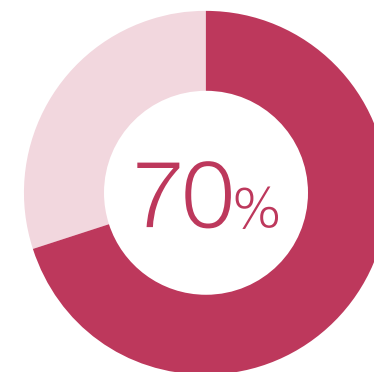
The LUFP also highlights why working collaboratively is essential and who some of the key stakeholders for London's trees and woodlands are. Collaboration remains central to the present update.

## Why an Actions Update?

The London Urban Forest Partnership published the LUFP in November 2020, highlighting the need for regular reviews. Most of the 36 priority actions included in the plan had a five-year delivery timeframe.

As of summer 2024, close to 70% were complete or underway, with many due to reach completion by March 2025. Time had therefore come for celebrating achievements (see case studies on the [London Urban Forest Resource Hub](#)) and defining some next steps.

As shown in fig. 2, significant changes in national priorities, the London policy framework and the wider economic, social and environmental climate provided further incentives for an update. Adapting delivery approaches to this new context is crucial to ensure the Partnership remains effective in its work.



priority actions complete or underway, with many due to reach completion by March 2025

Fig. 2

# The wider context shaping the 2025 LUFP Actions Update

## National priorities

Reduce housing shortages

Strengthen economic growth

Develop green finance models

Achieve net zero

## New or emerging pan-London evidence, spatial frameworks and policies

London Green Infrastructure Framework

Local Nature Recovery Strategy

(both expected to be finalised in 2025)

London Plan Update

(due in 2027)

London Surface Water Strategy

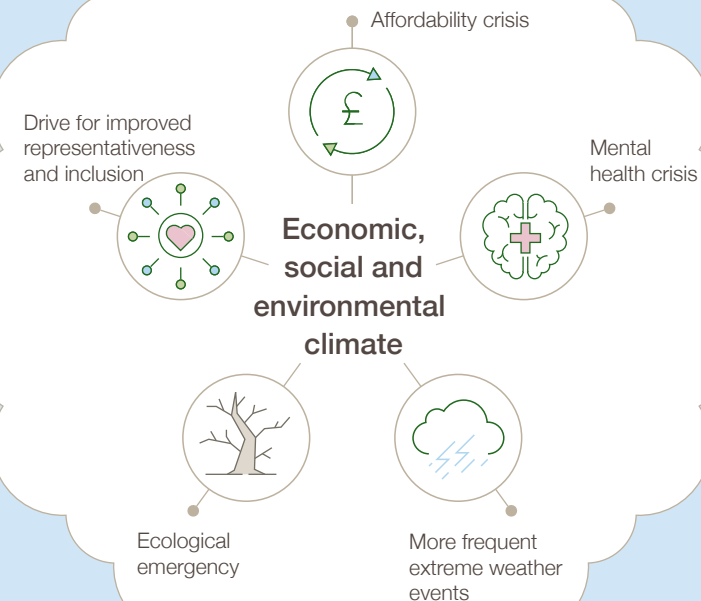
(due in 2025)

London Heat Risk Delivery Plan

(due in 2026)

London Climate Resilience Review

(published in 2024)





## How was the Actions Update developed?

Both the LUFP and the present LUFP Actions Update were developed by the London Urban Forest Partnership, a network bringing together organisations with a strategic interest in the capital's trees and woodlands co-chaired by the Greater London Authority and the Forestry Commission.

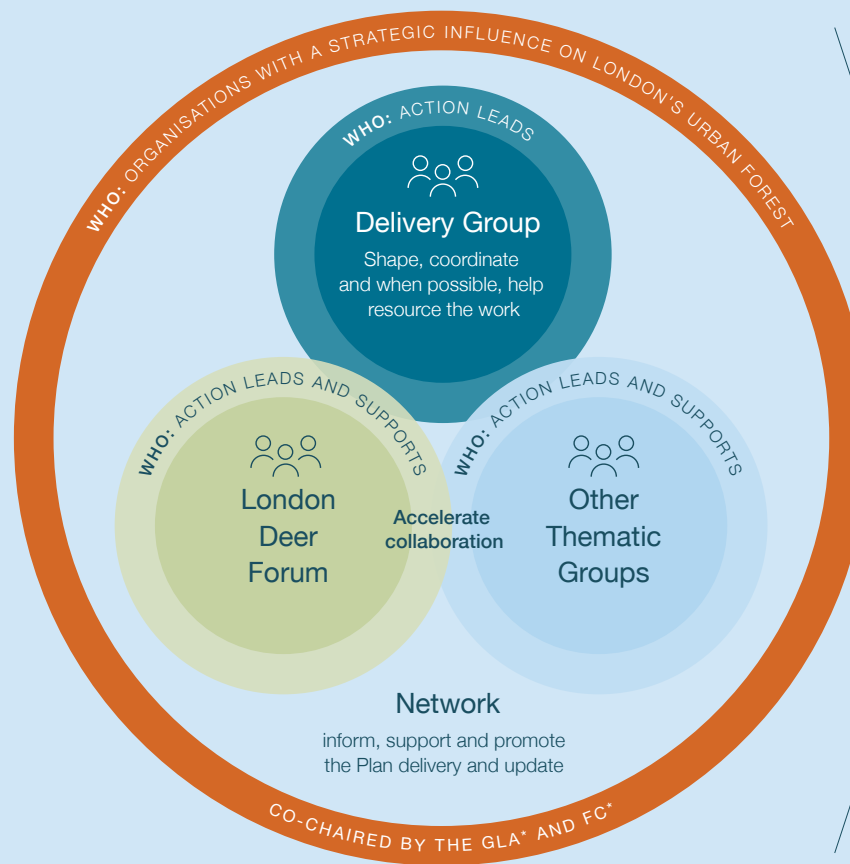
As shown in fig. 3, reviewing the make-up of the Partnership was one of the first steps in initiating the LUFP Actions Update. The update provided the opportunity to recognise organisations that had joined the network since 2020. It also generated appetite to bring in new voices and skills that could further strengthen the Partnership's impact and reach. The present document reflects the input of 32 Partnership members, as listed in the Acknowledgements.

Consultation with the Partnership and wider stakeholders was central to the development of the present document. The one-day London Urban Forest Workshop held in July 2024 was a cornerstone in this journey.

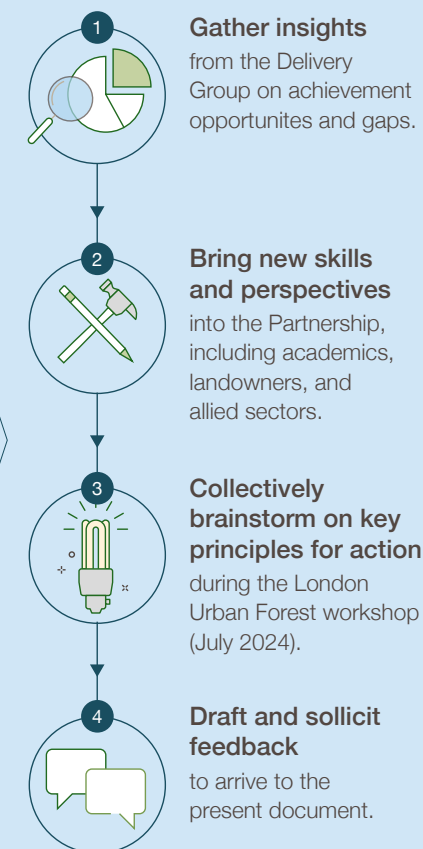
Fig. 3

# A Partnership-led approach

## Partnership structure



## Journey to produce this update



GLA\* — Greater London Authority

FC\* — Forestry Commission

## What is the Partnership keen to emphasise in this update?

Four key principles stood out during the July 2024 London Urban Forest Workshop.

Together with the themes and goals identified in the LUFP, these principles have provided the compass guiding the Partnership's work on this update. The original LUFP goal statements were amended to help embed these principles into the Partnership's forthcoming delivery work.

### Further information

Please refer to the [London Urban Forest Resource Hub](#) for funding information, case studies, and other resources supporting the delivery of the LUFP goals. Visit the [London Urban Forest Partnership](#) web page to learn more about the Partnership.



### Equity and inclusion

The Partnership is keen to place greater focus on addressing imbalances in access to the benefits and opportunities trees and woodlands provide, removing barriers where they exist. This means enhancing the urban forest community's representativeness and inclusion. It also means taking into consideration needs, relations and practices alongside of numbers of trees whenever possible when investing in growing and enhancing the London urban forest.



### Resilience

The Partnership is keen to ensure London's trees and woodland can weather stresses and pressures, to reliably continue to act as a green infrastructure into the future. This means reducing the vulnerability of London's trees and woodlands to the threats posed by climate change, pests and diseases and ecological decline. It also means ensuring the climate resilience benefits trees and woodlands can bring are fully understood and taken advantage of.



### Collaboration across boundaries and sectors

The Partnership is keen to better facilitate joint-working. This means continuing to place its weight behind strategic projects and initiatives implemented across administrative boundaries that can unlock big impacts. It also means enhancing cross-sector working by investing in community stewardship and better engaging non-tree focused organisations to help scale-up the delivery of enhancements to London's treescapes and the benefits they provide.



### Capacity

The Partnership is keen to support and develop its members' and more widely Londoners' ability to protect, manage and expand London's urban forest. This means developing career prospects and recruitment in the urban and community forestry sectors, continuing to develop skills and knowledge both within expert and non-expert communities, including leadership skills and abilities to secure resourcing.





# A new set of priority actions for London's urban forest

< After years of only seven elms, locals in Nine Elms joined forces to re-plant the eighth and ninth elm trees on the Thames Riverside in Wandsworth.  
© Paul Wood



# How to use the Actions Update

The Actions Update is structured around the 12 goals featured in the LUFP. Where an adjustment has been made to the original goal statement, this is earmarked with an asterisk (\*) and footnote providing the original wording.

Each goal is supported by a new set of action priorities that will be delivered by the identified members of the London Urban Forest Partnership. Table 1 below provides a key to the organisation acronyms used. Please note:

- The lead and support organisations listed for each action may change overtime to reflect the progress and opportunities that arise.
- The actions listed include some which partnership members can commit to delivering in the next 2 to 5 years alongside more aspirational

or long-term work that the partnership will work towards but may require additional resources.

- To help track the delivery of the four principles underpinning this update, icons are used to relate each action to the most relevant principle(s).
- The section on Monitoring progress and outcomes provides more information on how the Partnership intends to assess delivery and associated long-term impacts.

**Table 1:** Organisation acronyms

AA	Arboricultural Association	GIGL	Greenspace Information for Greater London CIC	NHSL	NHS London Sustainability Team	TDAG	Trees and Design Action Group
BCT	Bat Conservation Trust	GLA	Greater London Authority	PfL	Parks for London	TfC	Trees for Cities
CMC	Capel Manor College	ICF	Institute of Chartered Foresters	RBGK	Royal Botanic Gardens, Kew	TfL	Transport for London
CoLC	City of London Corporation	LAW	Lesnes Abbey Woods	RP	The Royal Parks	TOP	The Orchard Project
CPREL	Council for the Preservation of Rural England – London	LTOA	London Tree Officers Association	SF	Sylva Foundation	UDL	Urban Design Learning
EA	Environment Agency	LWT	London Wildlife Trust	STfL	Street Trees for Living	WT	Woodland Trust
FC	Forestry Commission	NE	Natural England	TTC	The Tree Council		
FR	Forest Research	NPC	National Park City	TCT	Thames Chase Trust		
				TCV	The Conservation Volunteers		

# Goal 1 Resilience







Enhance the resilience of London's urban forest to the threats posed by climate change, pests and diseases\*

\*Original wording: Manage London's urban forest according to a set of principles ensuring improved resilience against pests, diseases and climate change.



Updated actions	Lead	Support	Timeframe	Principles
<b>1a.</b> Identify knowledge gaps and good practices on how to manage trees subject to increased stress from climate change, pests, and diseases, while minimising pesticide and potable water use.	LTOA	FC, ICF/AA, TOP	2030	
<b>1b.</b> Facilitate the dissemination of London-relevant information on the anticipated impacts of climate change and pests and diseases on trees and best approaches to manages these impacts, targeting those involved in the planning and management of the urban forest.	GLA	FC, RBGK, TOP	On-going	
<b>1c.</b> Assess the vulnerability of all key component parts of London's publicly-owned tree population to anticipated climate changes by 2080, accounting for forecasted temperature changes and the urban heat island effect, water needs and water availability and identify key implications for tree supply chain management (see also action <b>1h</b> ) and management and monitoring of existing trees (see also action <b>11b</b> ).	RBGK, GLA	FC, TOP, CoLC	2025	
<b>1d.</b> Develop and disseminate tree species recommendations suitable for both London's current and anticipated climates, integrating data on functional traits, suitable types of planting locations, and if possible, impacts of provenance – soliciting input from tree growers.	RBGK, GLA	FC, TDAG, TOP, CoLC	2025	

< Six different tree species were featured in the 2014 make-over of Leonard Circus, in Shoreditch, Hackney.  
© Michael G. Spafford

Updated actions	Lead	Support	Timeframe	Principles
<b>1e.</b> Learning from Observatree, provide technical support to facilitate the definition and adoption of joint data collection and sharing protocols for monitoring of key species deemed at highest risks of the combined threats of pest and disease and climate change (see also <b>11b</b> ).	FC, RBGK	LTOA, GiGL, WT	Subject to funding	 
<b>1f.</b> Bring together London's key land and tree owners to develop pan-London monitoring and contingency plans enabling a concerted approach to the management of threats from pests and diseases on species that make-up a large proportion of London's canopy and are at high risk from the pressures of climate change (as identified through actions <b>1c</b> ) and/or pests and diseases (e.g. plane, oak, etc.).	LTOA	FC, WT, GLA	2030	 
<b>1g.</b> Identify other key recommendations from the <a href="#">London Urban Forest Resilience Research Report</a> to be taken forward in the next 3-5 years.	FC		2025	
<b>1h.</b> Assess and communicate the need, feasibility and impacts of expanding the supply chains for locally sourced and grown trees in and close to London, including borough and community tree nurseries.	WT	TCT, TTC	2027	

## Related actions

- 3f.** Support development and adoption of urban forest strategy.
- 3h.** Adopt a coordinated approach to the management of wild deer populations (London Deer Strategy).
- 6f.** Promote street tree planting and establishment good practices enabling greater tree and built environment resilience.
- 11b.** Coordinate pan-London monitoring of the impacts of climate change on trees.



# Goal 2 Management

Better manage existing trees and woodlands to maximise people, wildlife and climate resilience benefits\*

\*Original wording: Manage more of London's woodlands to maximise their benefits for people and wildlife.



Updated actions	Lead	Support	Timeframe	Principles
2a. Disseminate findings from the London Green Infrastructure Framework (LGIF) to major greenspace and tree managers to encourage the implementation of tree and other woody vegetation management practices that best realise the benefits most needed locally.	GLA	FC, Pfl, GiGL	2026	
2b. Develop and implement a landowner outreach project targeting priority geographic areas and green links (as identified in the LGIF and the Local Nature Recovery Strategy (LNRS)) for improving access, wildlife value, cooling, and/or reducing flood risks through improved tree and woodland management.	FC/CPREL	CPREL, TCV, WT, GiGL, LWT, BCT, EA	2026-onward	
2c. Advise boroughs developing grant applications for enhanced woodland management, prioritising areas of greatest needs.	FC	WT, TCT	On-going	
2d. Promote the use and reporting of results from <u>London's Woodland Condition Self-Assessment tool</u> .	LWT	CPREL, TCV	On-going	
2e. Deliver a package of tailored woodland management training for London urban forest managers (local authority green space teams, community groups).	FC	LWT, TCT, TCV	2027	

< Gathering coppiced hazel at Gutteridge Wood, Hillingdon.  
© London Wildlife Trust

## Related actions

- 1c. Assess climate vulnerability of London's public realm trees and identify key management implications.
- 1e. & 11b. Development and implementation of a pan-London programme to monitor impacts of climate change and pests and diseases on London's urban forest.
- 3a. & 3b. Review and develop delivery pathways for LGIF strategic priorities where trees and woodlands play a key role.
- 3e. Encourage urban forestry best practice (Tree Cities of the World Programme).
- 4b. Support the development of management plans for London's ancient woodland.
- 7b. Support treescapes enhancement programmes.
- 9f. Establish an Urban Forest Community Volunteers network.

> Young foresters recruited among local resident for a paid work experience as part of the Communi-Trees project to water newly planted trees on their estates in Camden over two summers (see also p.24).  
© Debbie Bourne





# Goal 3 Planning

Take a strategic approach to the management and expansion of London's urban forest\*

\*Original wording: Support all London boroughs to produce a local urban forest plan as a key part of a comprehensive green infrastructure strategy.



Updated actions	Lead	Support	Timeframe	Principles
<b>3a.</b> Review the strategic priority areas identified in the London Green Infrastructure Framework (LGIF) to identify key locations where trees and woodlands play a critical role.	GLA	FC, TCT	2025	
<b>3b.</b> Develop delivery pathways for the key locations found within the LGIF strategic priority areas where trees and woodlands play a critical role.	GLA	FC, TCT, EA	2025-onward	
<b>3c.</b> Ensure the London Surface Water Strategy and borough-led Local Flood Risk Management Strategies positively integrate trees in the actions identified to scale-up the delivery of sustainable drainage systems (SuDS) across London and promote more widely increased access to surface water for trees.	GLA/EA		2025-onward	
<b>3d.</b> Ensure the London Heat Risk Delivery Plan and the associated implementation programme seek optimal use of the cooling benefits trees can provide through shading and evapotranspiration.	GLA	TfC, EA, NHSL	2025	
<b>3e.</b> Promote the integration of trees and other green space enhancement measures in London hospitals' 2025 <u>Green Plans</u> and subsequent updates.	NHSL	GLA, TfC, TOP, StFL, NE	2025-onward	

< Tree-rich green corridor along the River Roding in Redbridge.  
© Guy Mannes-Abbott





## Updated actions

	Lead	Support	Timeframe	Principles
<b>3f.</b> Promote and support the development of tree and woodland strategies among London boroughs and institutional landowners such as housing associations, prioritising areas of greatest needs and encouraging good integration with local planning and development management policies, where appropriate.	GLA	LTOA, TfC, Pfl, WT, TTC	On-going	
<b>3g.</b> Encourage best practice in urban forestry among London boroughs by supporting their participation in the <u>Tree Cities of the World Programme</u> .	TfC		On-going	
<b>3h.</b> Adopt a coordinated approach to the management of wild deer populations, implementing recommendations from the London Deer Strategy.	FC	LTOA, LWT, NE, Pfl, TCT, CoLC	2025-onward	
<b>3i.</b> Review the impact of the London Plan's Urban Greening Factor on tree retention and planting on development sites and identify opportunities for enhancements.	GLA	LTOA	2025	
<b>3j.</b> Promote canopy cover expansion within London's major regeneration projects and land owned by the GLA family, contributing to a purposeful use of trees to deliver local growth, place-making and climate resilience objectives.	GLA		On-going	

## Related actions

- 8a.–** Commit to maintain pan-London data on extent, composition and condition of the urban forest.
- 8d.**
- 12b.** Broaden the London Urban Forest Partnership.
- 12d.** Trial assembling and advertising a consolidated list of tree and woodland investment opportunities to help leverage private green finance

# Goal 4 Protection

Protect London's urban forest against loss and damage, particularly irreplaceable assets\*

\*Original wording: Better protect London's urban forest against loss and damage, particularly irreplaceable assets including veteran trees and ancient woodlands.



Updated actions	Lead	Support	Timeframe	Principles
4a. Share best-practice associated with the management of tree risks, including subsidence, among London boroughs, institutional landowners such as housing associations and insurance companies.	LTOA	GLA, Pfl	On-going	
4b. Support the development of management plans for London's ancient woodland.	FC	CWT, LWT, GiGL	Subject to funding	
4c. Encourage and facilitate mapping of ancient and other veteran trees across London, tapping into the London-based network of <u>VETCert</u> tree specialists.	WT	GiGL, TTC, TCV, LTOA, CoLC	2030	
4d. Raise awareness among London's developer community and borough's development management and planning enforcement officers of good practices to avoid and manage illegal felling.	FC	LTOA	2030	
4e. Promote the use of tree valuation (such as the <u>Capital Asset Valuation for Amenity Trees -CAVAT</u> ) in decision-making involving the loss of healthy trees and the design of mitigation measures for healthy tree loss.	LTOA	WT	On-going	

## Related actions

- 2b. Develop and implement a landowner outreach project targeting priority woodland sites for improved management and expansion.

< The use of CAVAT underpinned the successful case made for the retention of large sections of the Heygate estate mature treescape into the Elephant Park development in Southwark.  
© Guy Mannes-Abbott

# Goal 5 Woodlands

Create more woodland,  
especially species-rich woodlands,  
where most needed for people,  
wildlife and/or climate resilience\*

\*Original wording: Create more woodland, especially species-rich woodland, in London, particularly in the Green Belt



Updated actions		Lead	Support	Timeframe	Principles
5a.	Review and refine the list of “ <u>high priority sites</u> ” for <u>woodland creation</u> identified via the London Tree Call to Action Fund programme considering the LNRS and the LGIF spatial priorities, identifying land ownership where this information is missing.	GiGL	NE, GLA, EA	2025	
5b.	Identify and promote understanding of delivery pathways for woodland creation in London.	FC	CPREL, LWT, TCT, TCV, TFC, WT	2026	
5c.	Develop and implement a landowner outreach project targeting “high priority sites” for woodland creation, supporting each willing landowners to get their site ‘investment ready’.	FC	CPREL, NE, TCT, TFC, TCV	On-going	
5d.	Support partners working on cross-border woodland creation with neighbouring authorities, especially on-going efforts to link Epping to Hainault Forests, continuing through to the Thames Chase Community Forest area.	FC, TCT CPREL	GLA, LWT, TCV, TFC, WT	On-going	

< Natural regeneration at Addington Hills, Croydon  
© Alastair McKinlay



## Related actions

- 2b. Develop and implement a landowner outreach project targeting priority woodland sites for improved management.
- 2c. Advise boroughs developing grant applications for enhanced woodland management.
- 3b. Develop delivery pathways for LGIF ‘tree rich’ priority areas.

> Mayor of London funded woodland creation at Enfield Chase, Enfield.  
© Greater London Authority





# Goal 6

## Street trees

Increase canopy cover on London's streets, particularly in areas with low existing canopy cover and high potential to reduce climate risks\*

\*Original wording: Increase the number of trees on London's streets, particularly in areas of currently low canopy cover.



Updated actions		Lead	Support	Timeframe	Principles
6a.	Identify and share learnings from the GLA's Croydon Vacant Tree Pit Pilot Survey and TfC's Hillingdon New Planting Pit Mapping and Ground-Truthing project to develop next steps on how best to support London boroughs with identifying suitable street tree planting sites.	LTOA/GLA/TfC	TCT	2025	
6b.	Promote corporate and public sponsorship for tree planting and establishment across London, including through building on the success of <b>the online sponsorship platform</b> established under action 6B of the original LUFP.	TfC/STfL	TCT, TCV, CoLC	On-going	
6c.	Support London boroughs with the development of skills and capacity required to take advantage of external funding available for tree planting and associated planning, management and community engagement activities, prioritising areas with low tree equity and/or high potential impact on reducing climate risks (see also 7b).	GLA	TCT, TfC	2026-onward	

< SuDS scheme on Shepherdess Walk, Hackney.  
© Sean Pollock/Hackney Council

## Updated actions

		Lead	Support	Timeframe	Principles
6d.	As part of existing efforts to promote more collaborative streetworks schemes, improve the integration of tree planting into London's major utilities' highways work through better street works data sharing, case studies documenting good practices and technical guidance on trees in proximity to utility apparatus.	GLA		On-going	
6e.	Identify priority 'pilot' segments and delivery pathways for increasing canopy cover through enhanced management and/or new planting across the TfL estate.	TfL	GLA, CoLC	2026	
6f.	Increase literacy in planting and establishment good practices enabling street trees to perform better at reducing climate risks, including extreme heat and flooding.	GLA, UDL	LTOA, EA, CoLC	On-going	

## Related actions

- 3b. Develop delivery pathways for LGIF 'tree rich' priority areas.
- 7b. Support treescapes enhancement programmes.

> Public engagement ahead of planting in a vacant pit on Thornsbeach Road, as part of the Grow Back Together project by Street Trees for Leaving, Greentalk and Lewisham Council supported by the Mayor of London.  
© Street Trees for Living





# Goal 7 Trees in green estate

Expand the benefits provided by trees in London's green spaces and institutional grounds, particularly in areas of climate change risk and poor provision of free access to nature.\*

\*Original wording: Increase the number of trees in London's parks and green spaces, particularly in areas of currently low canopy cover.



Updated actions	Lead	Support	Timeframe	Principles
7a. Raise awareness of the wildlife and community benefits associated with the use of a wide range of tree-based initiatives (including integrating deadwood, establishing new orchards, traditional or edible hedgerows, small woodlands, forest gardens and other treescapes with multiple and complementary vegetation strata) and facilitate understanding of the partnerships and approaches helping to overcome barriers to implementation.	GLA	UDL, TOP, TCV, TTC, CPREL, LWT, RSPB, PfiL, TfC, CoLC	On-going	
7b. Support institutional landowners (such as housing providers, NHS Trusts, cemeteries, London boroughs) with skills development and, if available, funding, to enable the design and implementation of tree-rich landscape enhancement programmes within their estates and streets, prioritising locations where this can contribute to the delivery of LGIF or LNRS priorities.	GLA	TfC, TOP, NHSL, WT, PfiL, TCV, EA, UDL	Subject to funding	
7c. Support delivery of tree-rich school greening schemes improving playgrounds' climate resilience, enabling creative education and connecting children to nature to support their mental health and wellbeing (See also 9h).	TfC, STfiL	GLA, TTC, WT, TOP, TCV, AfC	On-going	

< New planting and legacy trees on Hallfield Estate, Westminster.  
© Bridget Fox

## Updated actions

		Lead	Support	Timeframe	Principles
7d.	Promote opportunities associated with trees among existing green social prescribing networks, offering – as needed – training, awareness raising and resources for healthcare professionals and link coordinator.	NHSL	NE, PFL	Subject to funding	

## Related actions

3b.	Develop delivery pathways for LGIF ‘tree rich’ priority areas.
3f.	Support development and adoption of tree and woodland strategies.
8d.	Explore requirements for providing and maintaining a public-facing tree mapping platform.
9e.	Funding for community groups and other grass roots to plant trees in green spaces.
9h.	Develop support materials and activities for school to engage their students with trees.

> Orchard planting as part of the Communi-trees project across housing estates in Camden, a partnership initiative delivered by Think&Do Camden together with the Council with support from the Koko Foundation.  
© Debbie Bourne



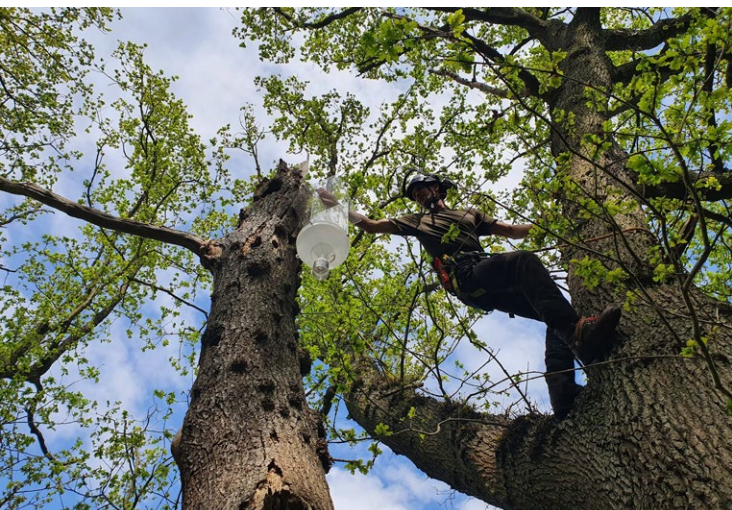


# Goal 8

## Tree data

Collect, centralise and provide widespread access to accurate and up-to-date information on the extent, condition and benefits of London's urban forest\*

\*Original wording: Ensure high quality, up to date information on the extent, condition and benefits of London's urban forest is accessible to land managers, decision-makers and the public.



Updated actions		Lead	Support	Timeframe	Principles
8a.	Regularly update the <u>London Tree Canopy Cover map</u> and assess canopy change patterns and causes.	GLA	GiGL	Every 5 years	
8b.	Develop tree canopy cover projections.	GLA	FR	2026	
8c.	Maintain the pan-London database of publicly owned trees outside woodlands (published as the <u>London Street Tree Map</u> at the time of publication of this plan), incorporating data on species, size, conditions and location as much as possible.	GLA/LTOA	GiGL, TfL, RP	On-going	
8d.	Explore partnership and resource requirements for providing and maintaining an interactive public-facing map providing interpretation of the pan-London database of publicly owned trees outside woodlands (e.g. calculation of ecosystems services and value) and facilitating public engagement (e.g. identify where to water trees, where to harvest, collating data from community science programmes, etc.).	GLA	GiGL, TCT	2026	

< Saproxylic invertebrates survey trap being installed in spring 2022 in Barnes Commons, Richmond. The survey revealed that the site is in the top 5 most important London locations for the conservation of these rare species associated dead or decaying wood.  
© Rashadee Miller

Updated actions		Lead	Support	Timeframe	Principles
8e.	Undertake sample-based data collection on privately owned trees providing insight into species, conditions, ecosystem services and value.	GLA, FC	GiGL	Subject to funding	
8f.	Disseminate findings from the London Green Infrastructure Framework to support tree equity.	GLA	WT	2025-onward	
8g.	Continue to promote and facilitate the collection of woodland-dependant wildlife data (e.g. deer, stag beetle, owls, glow-worm), ensuring it is fed into the London-wide environmental record data managed by GiGL.	LWT	GiGL	On-going	

## Related actions

4c. Enhance mapping of ancient and other veteran trees.

> Public engagement campaign capitalising on the data gathered as part of an iTree Eco study in Ealing delivered by Treeconomics, Trees for Cities, Ealing Council, Forestry Commission, Forest Research, and Arup with support from the Mayor of London.  
© London Borough of Ealing





# Goal 9

## Community stewardship

Ensure all Londoners can play an active role in the protection, growth and management of the urban forest\*

\*Original wording: Support Londoners in playing an active role in the protection, growth and management of the urban forest.










Updated actions		Lead	Support	Timeframe	Principles
9a.	Research Londoners' attitudes, emotional attachment to and understanding of benefits associated with trees – focusing particularly on under-represented audiences.	FC	NPC, TfC	Subject to funding	
9b.	Compile and share lessons learned and successes from within the urban forestry sector and beyond on how to remove barriers to engagement with tree stewardship among young people, ethnic minority groups and other under-represented groups – starting with the LWT's Great North Wood Keeping it Wild experience and TOP's pathways to employment training courses.	GLA	LWT, TCT, TfC, TOP, AfC	2025	
9c.	Learning from 9a and 9b, develop shared communication and outreach strategy for all key actions within this plan reliant upon or seeking to achieve community engagement (e.g. 9d, 9e, 9f, 9g, 9h, 11b and 11c), ensuring adequate input from Equality, Diversity and Inclusion (EDI) specialists and EDI-focused environmental organisations.	GLA	TCT, TfC, CPREL, TCV	2026	
9d.	Provide communities and grass roots organisations with financial support to enhance their local green spaces through a wide palette of tree-rich (and other) interventions.	GLA		On-going	

< The Green Man visits a community tree planting and tree dressing event led by Trees for Cities in Horsenden Hill Home Field, Ealing.  
© Trees for Cities

## Promote and support

Goal 9: Community stewardship | Goal 10: Circular economy | Goal 11: Workforce &amp; innovation | Goal 12: Coordination &amp; resourcing

Updated actions		Lead	Support	Timeframe	Principles
9e.	Promote to all Londoners existing opportunities to get involved in the planting, management and monitoring of London's trees and woodlands.	TfC, TTC, TCV	TCT, STfL	On-going	 
9f.	Establish an urban forest community volunteers network supporting community groups involved in trees and woodland management with skills in tree and woodland management and inclusive volunteer recruitment.	TCV	CPREL, PfL, TCT, TTC	Subject to funding	  
9g.	Refresh the <u>London Tree and Woodland Awards</u> to celebrate diversity and ensure better engagement from Londoners.	FC/GLA		2025	
9h.	Develop support materials and activities enabling schools to engage their students with the urban forest within and beyond their playgrounds – building connection, practical tree care skills and understanding of career prospects.	STfL, TfC	TCT, TOP, TTC, AfC	On-going	

## Related actions

- 8d. Explore requirement for a public-facing tree mapping platform facilitating public engagement.

> Wreath-making from freshly coppiced willow by volunteers who took part in a woodland management training led by The Conservation Volunteers at the Greenwich Peninsula Ecology Park.  
© Alastair McKinlay





# Goal 10 Circular economy

Identify and promote opportunities for the London's urban forest to take part in the circular economy\*

\*Original wording: Recognise the productive potential of London's urban forest and support wood enterprises.



Updated actions		Lead	Support	Timeframe	Principles
10a.	Learning from the findings from the FC's Lesnes Abbey case study, explore and map how to extract and market wood products derived from the management of London's trees and woodland.	FC	SF	Subject to funding	
10b.	Identify woodland sites with productive potential (e.g. former plantation woodland).	FC	GiGL, CoLC, LWT	2027	
10c.	Develop and deliver a training programme for tree and woodland managers on best use of timber from woodland operations (from the creation of deadwood habitats through to roundwood for onward processing).	ICF	FC, CoLC	Subject to funding	
10d.	Promote and facilitate the harvesting of fruits from London orchards, and, where possible, into the local circular economy or distribution networks designed to improve access to fresh food among people in need.	TOP		On-going	

## Related actions

- 2b. Develop and implement a landowner outreach project targeting priority woodland sites for improved management.

< The backrests of the benches at New Change Garden in the City of London were handcrafted from London-sourced plane trees.  
© Odera Okoye

# Goal 11

## Workforce & innovation






Invest in growing an inclusive, knowledgeable and innovative urban forestry workforce for London\*

\*Original wording: Champion, share and encourage good practice, innovation and research amongst urban forest professionals.



Updated actions		Lead	Support	Timeframe	Principles
11a.	Identify priority research topics for London's urban forest and promote to research providers and funders – identifying opportunities for knowledge exchange programme where appropriate.	LTOA	CPREL, FC GLA, TCT, RBGK	2025- on-going	
11b.	Coordinate a pan-London programme monitoring the impacts of climate change on trees and woodlands (see also action 1e), including data sourced from community science.	FC	GiGL, TCT, TfC, TOP, RBGK, WT, LTOA, NPC	Subject to funding	
11c.	Enhance the content of the <u>London Urban Forest Resource Hub</u> to better facilitate knowledge sharing and development (e.g. include 'bite-size training' and additional project case studies).	GLA	LTOA, TCT, UDL	2025- on-going	
11d.	Promote initiatives that can enhance equality, diversity and inclusion within London's urban forest workforce, including toolkits from the GLA's <u>Workforce Integration Network</u> , exploring if there are relevant opportunities for tailoring.	GLA	LTOA, TCT, (any employer)	2026	

< Tomograph used to assess the level of internal decay on a mature plane tree in Islington.  
© London Borough of Islington

Updated actions		Lead	Support	Timeframe	Principles
11e.	Promote and provide career pathway programmes (including pre-employment programmes and paid traineeship) into urban and community forestry targeting young people and other under-represented audiences identified in the LTOA's <u>Diversity and Inclusion Working Party Report 2020</u> .	TfC	LWT, TCT, TCV, TOP, TTC	Subject to funding	 
11f.	Provide more training and continuing professional development opportunities within London, partnering as needed with other organisations offering the right specialisms to address the skill gaps identified in the <u>London Trees and Woodland Skills Survey 2023</u> .	AA, ICF	UDL, EA, CMC	2028	
11g.	Identify other recommendations from the <u>London Trees and Woodland Skills Survey 2023</u> to be taken forward in the next 3-5 years, capitalising where possible on overlaps with the green/blue skills development priorities identified by the GLA's Skills team.	LTOA, PiL	GLA	2025	 

## Related actions

- 12a. Review the London Urban Forest Resource Hub review.

> Participant to The Orchard Project's Community Orchard training programme practicing her skills in Beckers Estate, Hackney.  
© Kath Rosen





# Goal 12

## Coordination & resourcing

Facilitate delivery through partnership coordination and project resourcing\*

\*Original wording: Develop a new partnership structure to deliver the London Urban Forest Plan actions.



Updated actions		Lead	Support	Timeframe	Principles
12a.	Analyse current levels of use of and collate feedback on the <a href="#">London Urban Forest Resource Hub</a> to develop and implement recommendations for enhancements (see also <a href="#">11c</a> ).	GLA		2025	
12b.	Broaden the make-up of the <a href="#">London Urban Forest Partnership</a> to bolster its capacity for engagement and inclusion (e.g. invite representatives of youth networks and inclusion experts), knowledge development and innovation as well as access to planting space and funding.	FC, GLA	TCT	2025	
12c.	Pursue external grant funding opportunities to increase delivery capacity within the London Urban Forest Partnership.	FC, GLA	CPREL, TCT	On-going	
12d.	Trial assembling and advertising a consolidated list of tree and woodland investment opportunities to help leverage private green finance, including but not limited to the selling of biodiversity net gain credits and market-based approaches to deliver trees as part of SuDS through street works (as explored by the GLA's Ofwat innovation project).	GLA	TCT, EA	2028	

< 11 trees feature in the Marylebone Flyover Raingarden delivered in Westminster by TfL in partnership with Thames Water, the Greater London Authority and the Marble Arch Business Improvement District.  
© Michael Pilkington



Updated actions		Lead	Support	Timeframe	Principles
12e.	Secure resources for the coordination of the delivery of this action plan.	FC/GLA		On-going	
12f.	Finalise the Key Performance Indicators outlined in Table 2 further below to help assess the long-term impact of the London Urban Forest Partnership's collective work.	GLA	All	2025	
12g.	Develop and manage a reporting framework to monitor progress towards the delivery of all actions listed above.	GLA	All	2025-onward	

### Related actions

- 3b. Identify delivery pathways for LGIF 'tree rich' or 'tree reliant' priority areas.
- 3c. Positively integrate trees in the London Surface Water Strategy and borough Local Flood Risk Management Strategies.
- 3d. Integrate pro-active use of tree-cooling potential within the London Heat Risk Delivery Plan.
- 3j. Deliver treescape enhancements via GLA-led major regeneration project and land management.
- 5b. Identify and promote pathways for woodland creation in London.
- 6e. Identify locations and delivery pathways for pilot treescape enhancement within the TfL estate.





# Monitoring progress and outcomes

< Quercus robur at Woodberry  
Wetlands, Hackney.  
© Paul Wood



## Key performance indicators

The LUFPP established a set of Key Performance Indicators (KPIs) to help monitor the long-term outcomes of the London Urban Forest Partnership’s work.

As part of the Actions Update, these KPIs have been reviewed and amended to better address the three overarching LUFPP themes and take greater advantage of existing data collection efforts within the partnership. Further work is needed to finalise some of the indicators identified, as covered in Action [12f](#) above. An overview of these updated KPIs is provided in Table 2.

### Anticipated results

To complement these KPIs, a set of anticipated results will be defined for each action to identify, in measurable terms, what successful delivery is expected to look like ([See action 12g](#)).

These anticipated results will help the partnership monitor its progress towards the delivery of this Actions Update.

**Table 2: Updated KPIs for the London Urban Forest Plan (work in progress)**

KPI 1: Tree canopy cover	Target	Baseline	Data owner
% of land area covered by trees reaching at least 4m in height.	London Environment Strategy target: By 2030: By 2050: 22%	2018	Every 5 years

KPI 2: Street trees	Target	Baseline	Data owner
<b>2a. Number of street trees:</b> Number of street trees by borough	To be defined	2025	GLA / London Boroughs/ TfL
<b>2b. Street tree size distribution:</b> % of tree population by size class (to be defined) and by borough.			
<b>2c. Street trees species diversity:</b> % of tree population by specie, genus and family by borough.			
<b>2d. Street trees species resilience:</b> % of tree population with high climate resilience score.			
<b>2d. Street trees integration with SuDS:</b> Number of trees integrated to SuDS schemes.			



KPI 3: Other public realm trees	Target	Baseline	Data owner
3a. Number of other public realm trees: Number of public realm trees (other than street trees) by borough.	To be defined	2025	GLA / London Boroughs/ TfL / RP
3b. Other public realm trees tree size distribution: % of tree population by size class (to be defined) and by borough.			
3c. Other public realm trees species diversity: % of tree population by specie, genus and family by borough.			

KPI 4: Woodland habitat expansion	Target	Baseline	Data owner
4a. Area of woodland: to be defined.	4a. To be defined	4a. 2025	GLA / GiGL
4b. New areas dedicated to species-rich woodland creation: area of species-rich woodland planted or managed for woodland natural regeneration.	4b. London Environment Strategy target: By 2030: 20 hectares By 2050: 200 hectares	4b. 2016	

KPI 5: Woodland management	Target	Baseline	Data owner
Area (hectares) of woodlands in London for which FC has records of a woodland management plan, a grant funding agreement or felling license.	To be defined	2025	FC

< New growth on a yew branch, in Islington.

© James Robinson-Tillet

<b>KPI 6: Ancient woodland protection</b>	<b>Target</b>	<b>Baseline</b>	<b>Data owner</b>
Area (hectares) of ancient woodlands.	Zero loss (Ha)	2024	GiGL
<b>KPI 7: Tree equity</b>	<b>Target</b>	<b>Baseline</b>	<b>Data owner</b>
Number of Lowers super output areas reaching 80% tree equity.	To be defined	2024	WT
<b>KPI 8: Woodland access and use</b>	<b>Target</b>	<b>Baseline</b>	<b>Data owner</b>
8a. Woodland use: To be defined. 8b. Woodland access: To be defined.	To be defined	To be defined	GLA / GiGL
<b>KPI 9: Community stewardship</b>	<b>Target</b>	<b>Baseline</b>	<b>Data owner</b>
To be defined.	To be defined.	To be defined.	To be identified
<b>KPI 10: Diversity and inclusion</b>	<b>Target</b>	<b>Baseline</b>	<b>Data owner</b>
To be defined.	To be defined.	To be defined.	To be identified
<b>KPI 11: Tree and Woodland Strategies</b>	<b>Target</b>	<b>Baseline</b>	<b>Data owner</b>
% of London Boroughs with a current tree and woodland strategy.	To be defined.	2024	LTOA





# References and Acknowledgements

< Windrush Square plane  
in Brixton, Lambeth.  
© Paul Wood

# References

## London-focused resources

- GLA. (n.d.). London Urban Forest Resource Hub.  
[www.london.gov.uk/programmes-strategies/environment-and-climate-change/parks-green-spaces-and-biodiversity/trees-and-woodlands/london-urban-forest-resource-hub](http://www.london.gov.uk/programmes-strategies/environment-and-climate-change/parks-green-spaces-and-biodiversity/trees-and-woodlands/london-urban-forest-resource-hub)
- London Urban Forest Partnership. (2020). London Urban Forest Plan.  
[www.london.gov.uk/sites/default/files/londonurbanforestplan\\_final.pdf](http://www.london.gov.uk/sites/default/files/londonurbanforestplan_final.pdf)
- Treeconomics. (2024). London Urban Forest Resilience Project Research Report.  
[www.london.gov.uk/sites/default/files/2024-09/london-urban-forest-resilience-project-report\\_v2.2.pdf](http://www.london.gov.uk/sites/default/files/2024-09/london-urban-forest-resilience-project-report_v2.2.pdf)
- GLA. (forthcoming). London Green Infrastructure Framework.  
[www.london.gov.uk/programmes-and-strategies/environment-and-climate-change/parks-green-spaces-and-biodiversity/green-infrastructure](http://www.london.gov.uk/programmes-and-strategies/environment-and-climate-change/parks-green-spaces-and-biodiversity/green-infrastructure)

- Howard Boyd, E., Leigh, G., Sutton, J. (2024). London Climate Resilience Review.  
[www.london.gov.uk/programmes-strategies/environment-and-climate-change/climate-change/climate-adaptation/london-climate-resilience-review#the-london-climate-resilience-review-publishes-final-report-202096-title](http://www.london.gov.uk/programmes-strategies/environment-and-climate-change/climate-change/climate-adaptation/london-climate-resilience-review#the-london-climate-resilience-review-publishes-final-report-202096-title)
- GLA. (forthcoming). London Nature Recovery Strategy.  
[www.london.gov.uk/programmes-strategies/environment-and-climate-change/parks-green-spaces-and-biodiversity/local-nature-recovery-strategy](http://www.london.gov.uk/programmes-strategies/environment-and-climate-change/parks-green-spaces-and-biodiversity/local-nature-recovery-strategy)
- LTOA. (2020). Diversity and Inclusion Working Party Report.  
[www.ltoa.org.uk/docs/ltoa-diversity-report.pdf](http://www.ltoa.org.uk/docs/ltoa-diversity-report.pdf)
- O'Sullivan, C., Porter, B., Stocks, J. Stannard, Ed. (2023). London Trees and Woodland Skills Survey Report. London Tree Officers Association/Parks for London.  
[parksforlondon.org.uk/trees-woodland-skills-survey-report-2023/#](http://parksforlondon.org.uk/trees-woodland-skills-survey-report-2023/#)

## Key national policy document

- DEFRA. (2023). Environmental Improvement Plan 2023.  
[www.gov.uk/government/publications/environmental-improvement-plan](http://www.gov.uk/government/publications/environmental-improvement-plan)
- DEFRA. (2023). Woodland Access Implementation Plan.  
[www.gov.uk/government/publications/woodland-access-implementation-plan](http://www.gov.uk/government/publications/woodland-access-implementation-plan)
- DEFRA. (2022). Keepers of Time: ancient and native woodland and trees policy in England.  
[www.gov.uk/government/publications/keepers-of-time-ancient-and-native-woodland-and-trees-policy-in-england](http://www.gov.uk/government/publications/keepers-of-time-ancient-and-native-woodland-and-trees-policy-in-england)



# Acknowledgements

The Greater London Authority and the Forestry Commission, Co-chairs of the London Urban Forest Partnership, would like to thank the many individuals who gave their time and expertise to inform the development of this action plan. Organisations that are part of the Partnership are identified with an asterisk \*.

## Central St Martins, UAL

Jane Penty,  
Associate Lecturer  
in Product Design

## City Corporation of London\*

Ben Bishop,  
Environmental  
Resilience Officer

Tanith Cook,  
Conservation Manager,  
Epping Forest

Jake Tibbetts,  
City Gardens Manager

Alex Toledo,  
Head of conservation,  
Epping Forest

## Colne Valley Regional Park\*

Michelle Jones,  
Landscape Recovery Manager

## CPRE London\*

Anna Taylor,  
Chief Executive

## Environment Agency\*

Neil Monaghan,  
Principal Officer Green  
Infrastructure (London Team)

## Forest Research

Kieron Doick,  
Head of Urban Forest  
Research Group

## Forestry Commission\*

Lorna Clark,  
Local Nature Recovery  
Adviser, London

Richard Cobb,  
Local Partnership Advisor,  
South East and London

Jane Hull,  
Area Director, South East  
and London

Dan Lazarou West,  
Partnership Manager,  
South East and London

Jim Smith,  
National Urban Forestry Adviser

Pherenice Worsey-Buck,  
Woodland Officer

## GiGL\*

Julie Cox,  
Partnership Manager

Molly Wilcross,  
Partnership Officer

## Greater London Authority\*

Vicky Boorman,  
Principal Policy and Programme  
Officer – Lead on Water

Gabrielle Caprotti,  
Streets Lead – Infrastructure  
Coordination

Abby Crisostomo,  
Head of Green Infrastructure

Rachel Dixon,  
Civil Society Data and  
Policy Officer

Annette Figueiredo,  
Principal Policy and Programme  
Officer – Climate Adaptation

Andrew Hinchley,  
Principal Policy and Programme  
Officer – Green Infrastructure

Anne Jaluzot,  
London Urban Forest Plan  
Coordinator

Emer O'Connell,  
Consultant in Public Health

Shipra Ogra,  
Principal Policy Officer  
Civil Society

Sarah Smith,  
London Nature Recovery Officer

Holly Smith,  
Project Manager, Climate  
Change Adaptation

Victoria Thorns,  
Senior Development Manager  
- Sustainability (Land and  
Development)

## Heritage Quarter Business Improvement District\*

David Beaumont,  
Head of Sustainability  
and Infrastructure

## Institute of Chartered Foresters\*

Ian Lee,  
Representative

## Lantern\*

Amy Hammond,  
Director

## Lesnes Abbey Woods\*

Ian Holt,  
Estate Manager

## London Borough of Barnet

Andy Tipping,  
Tree and Woodland Manager

## London Borough of Ealing

Dale Mortimer,  
Arboricultural Manager  
(also LTOA Chair)

## London Borough of Hackney

Ollie Hayes,  
Senior Arboricultural Officer

## London Borough of Hammersmith & Fulham

Jessica Bastok,  
Arboriculture Manager

Eugene McGee,  
Arboricultural Officer





---

**London Borough of Haringey**  
Annabel Foskett,  
Nature Conservation Officer

Dan Snell,  
Urban Forest Project Officer

---

**London Borough of Islington**  
James Robinson Tillett,  
Tree Planting and  
Engagement Manager

Jon Ryan,  
Arboricultural Manager

---

**London Borough of Lambeth**  
Ajay Joshi,  
Tree Service Manager

---

**London Tree Officers  
Association\***  
Becky Porter,  
Executive officer

---

**London Wildlife Trust\***  
Richard Barnes,  
Head of Conservation

Mathew Frith,  
Director of Policy and Research

---

**National Park City\***  
Mark Cridge,  
Chief Executive

Matt Ponting,  
Ranger

---

**Natural England\***  
Ella Hayden

---

**Network Rail**  
Hannah Graves,  
Biodiversity Programme  
and Strategy Manager  
(Southern Region)

---

**NHS England\***  
Misha Adeniji,  
London Greener NHS  
Programme Manager

---

**Peabody\***  
Desiree Shepherd,  
Thamesmead Landscape  
and Public Realm Manager

---

**Royal Botanic Gardens, Kew\***  
Kevin Martin,  
Head of Tree Collection

---

**Royal Borough of  
Kensington and Chelsea**  
Jessica Stocks,  
Arboriculture Manager  
(also LTOA Deputy Chair)

---

**Street Trees for Living\***  
Oli Black,  
Head of Operations

Marie-Claire Denyer,  
Head of Partnerships and  
Initiatives

---

**Thames Chase Trust\***  
Dave Bigden,  
Director

Aisling Woodhead,  
Deputy Director

---

**The Conservation Volunteers\***  
Richard Evans,  
Assistant Director, London

---

**The Crown Estate\***  
Ffion Davies,  
Sustainability Executive

---

**The Orchard Project\***  
Kath Rosen,  
Chief Executive

---

**The Royal Docks\***  
Hermela Habtegebrel,  
Economic Development  
Manager

---

**The Royal Parks\***  
Alister Hayes,  
Head of Programmes.  
Volunteering and Conservation

---

**The Tree Council\***  
Clare Bowen,  
Director of Programmes,  
Partnership & Communication

Jackie Shallcross,  
Shared Outcomes Fund  
Project Lead

---

**The Woodland Trust\***  
Bridget Fox,  
Regional External Affairs Officer

---

**Transport for London\***  
Katherine Drayson,  
Strategy and Planning Manager

---

**Trees and Design  
Action Group\***  
Charlotte Glazier,  
Representative

Sue James,  
Convener

---

**Trees for Cities\***  
Carrie Hume,  
Development Director

Susannah Littlewood,  
Partnership Manager

Roddy Shaw,  
Senior Development Manager  
(England)

---

**University College London**  
Guy Mannes-Abbott,  
PhD Candidate

---

**University of Greenwich**  
Ed Wall,  
Professor of Cities and  
Landscapes

---

**Urban Design Learning\***  
Paul Dodd,  
Head of Design Advice

