

**Department: Planning &
Regeneration**
Our ref: MGLA070323-1890

Date: 21 March 2023

Dear

Freedom of Information request

Thank you for your email dated 6 March 2023, which was received by the Greater London Authority on that day.

Our response to your request is as follows:

Can you please detail all Central London boundary expansions since the first London Plan to date.

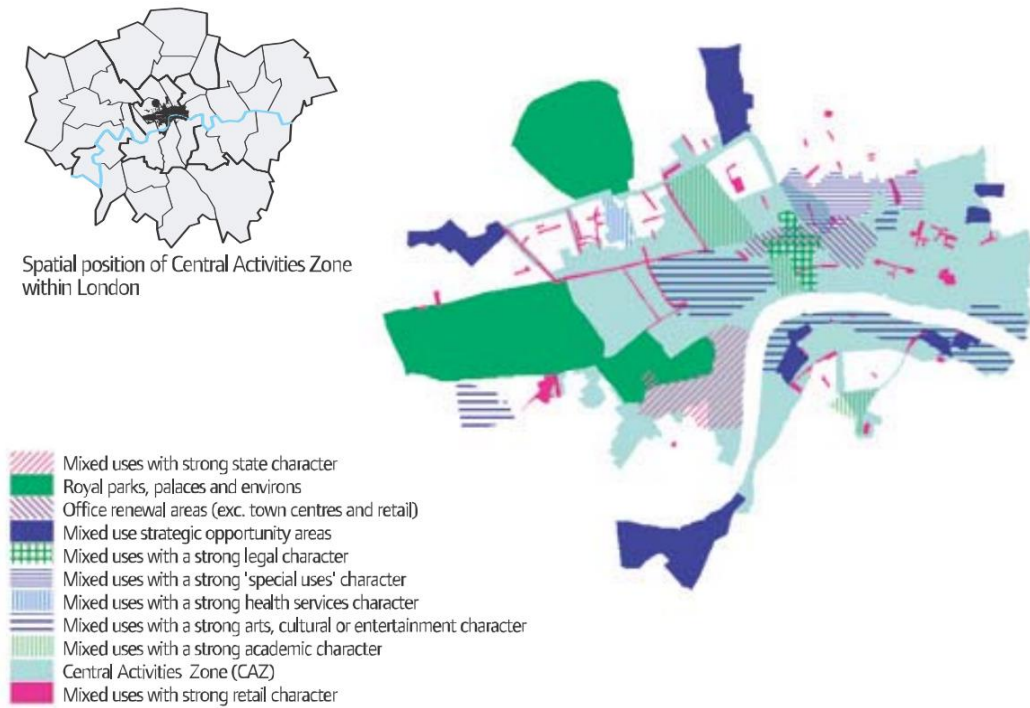
Where reference is made to the "Central London boundary" this is interpreted as referring to the Central Activities Zone boundary in the London Plan. Please do let us know if a different boundary is being referred to.

Please note that the London Plan can not establish the specific boundaries of the Central Activities Zone. The power to do this lies solely with the relevant borough through their own plans and policies map. The London Plan can, however, set out broad areas which have specific strategic policies, such as the Central Activities Zone. Therefore, although the London Plan might identify a broad area, later London Plans may show a more refined boundary after the local authority has adopted the exact boundary through its own local plan. It is also for this reason that the boundary of the Central Activities Zone is not shown with a basemap in the London Plan, as it can not define whether specific sites are within or outside the boundary.

Screenshots of the available maps from previous London Plans are set out below, and the past versions of the London Plan are available on the Greater London Authority website at [Past versions and alterations to the London Plan | London City Hall](#).

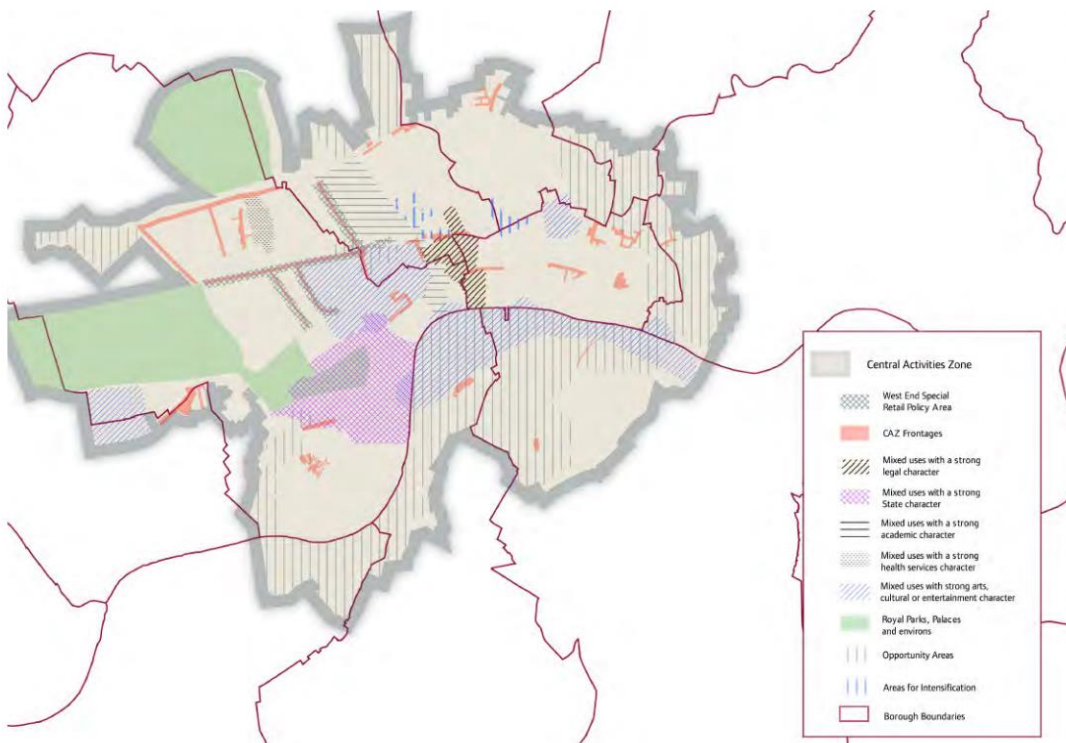
The London Plan (2004), Map 5B.2 page 232

map 5B.2 Central Activities Zone

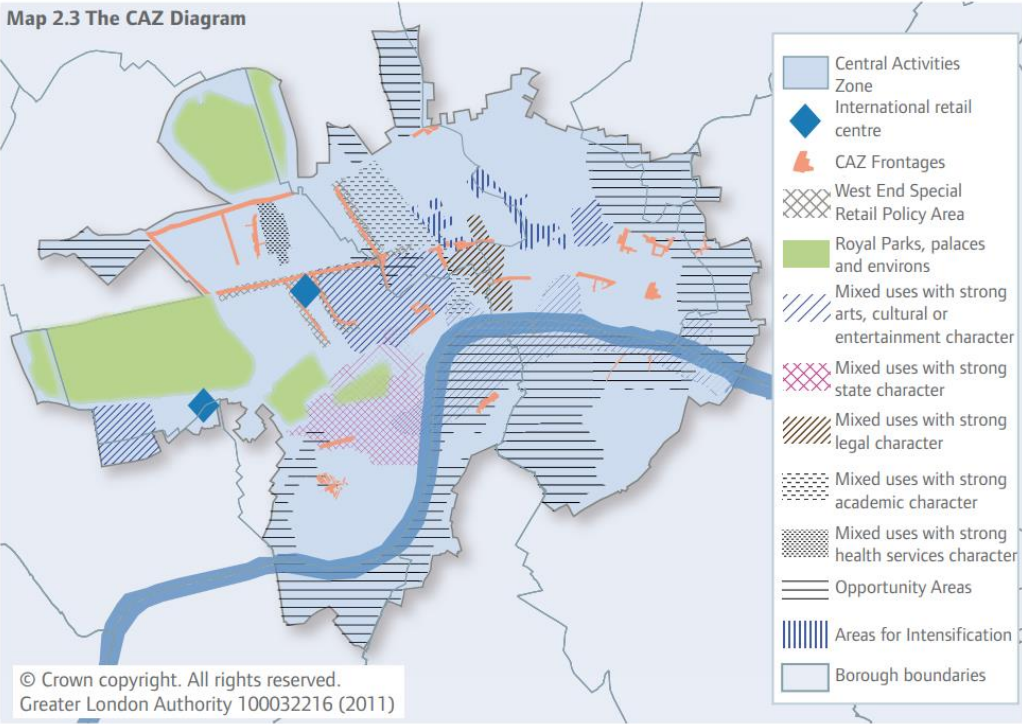


The London Plan Consolidated with Alterations since 2004 (2008), Map 5G.1 page 353

map 5G.1 Central Activities Zone

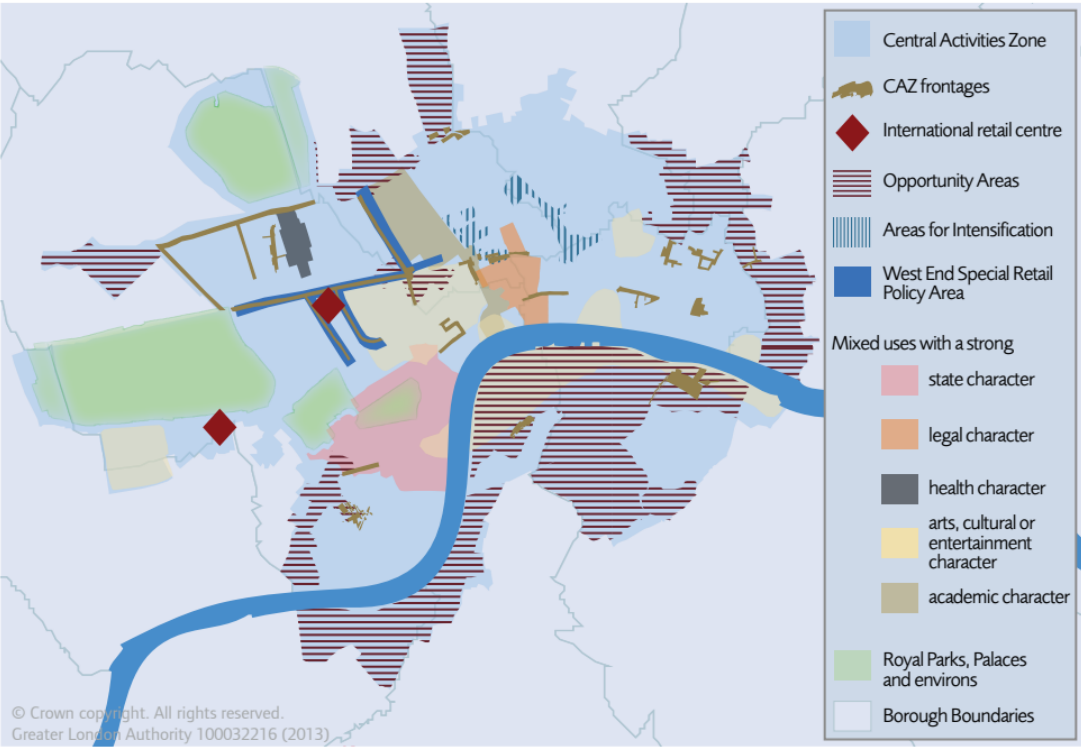


The London Plan (2011), Map 2.3 page 56

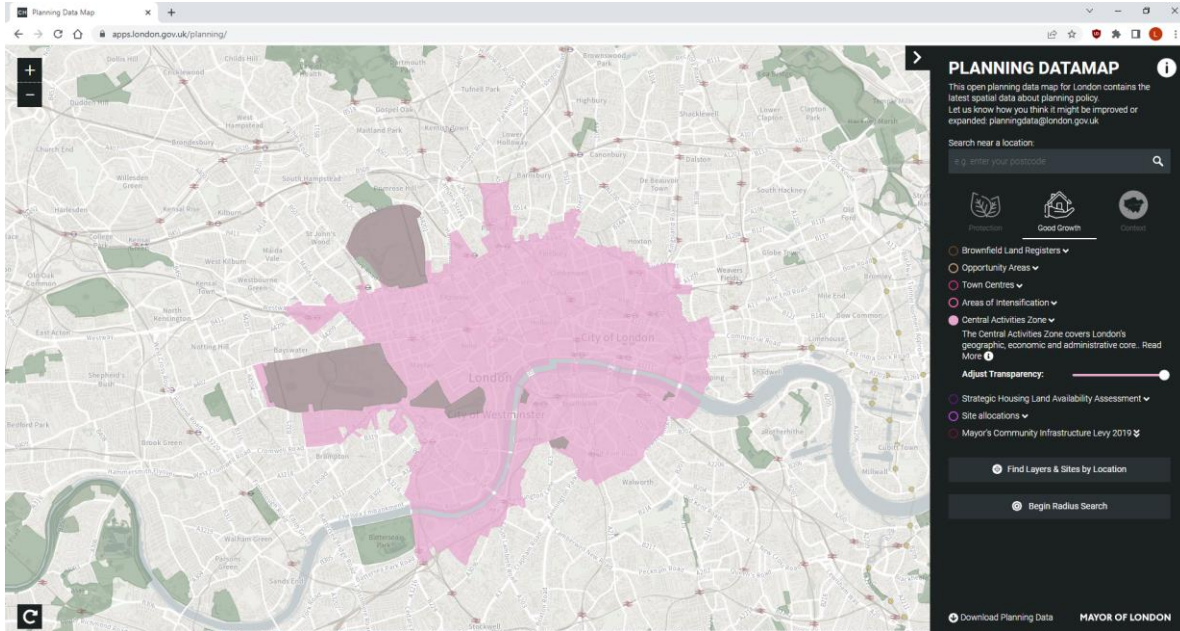


The London Plan (2016, 2017 fix), Map 2.3 page 58

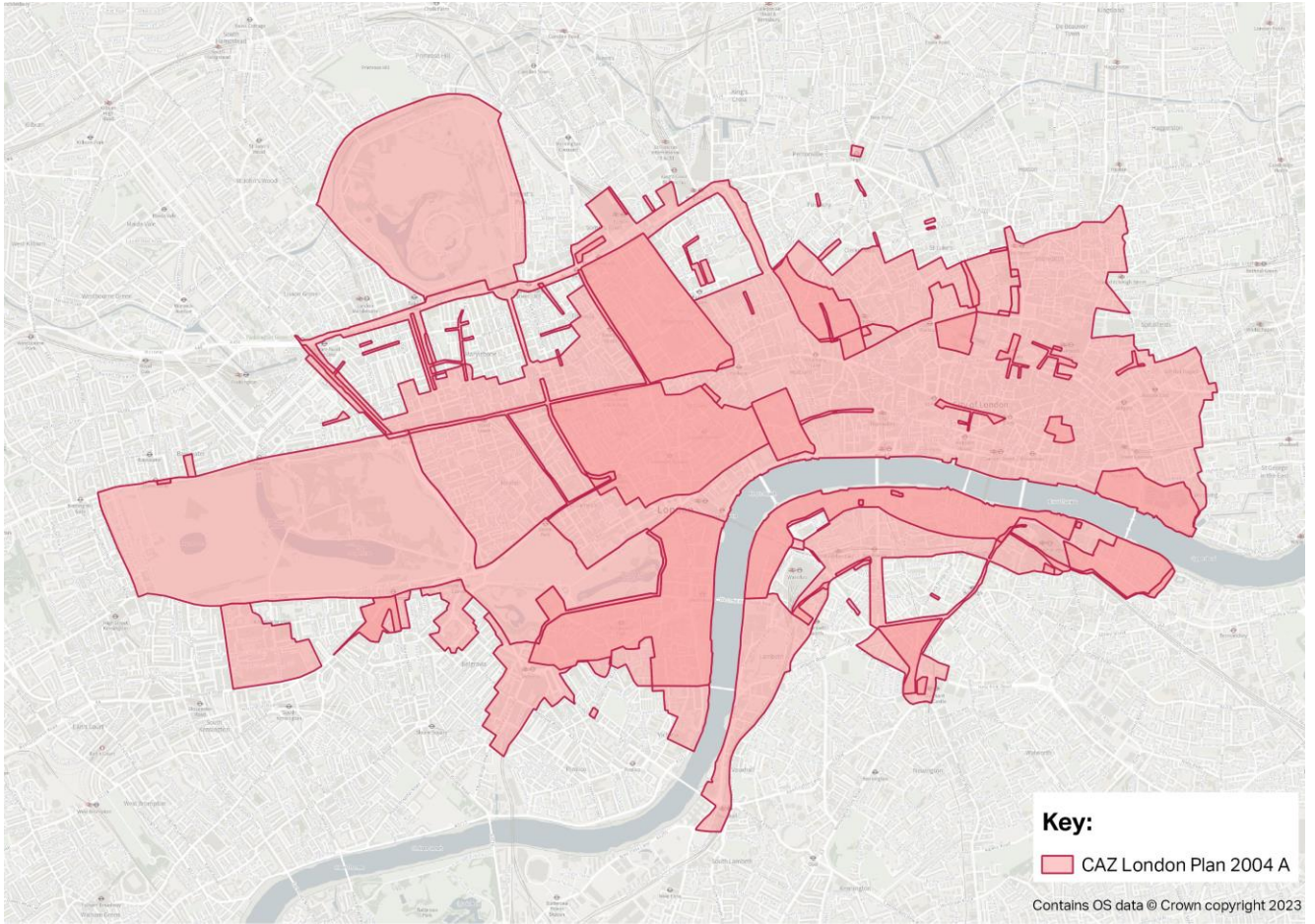
Map 2.3 The CAZ Diagram

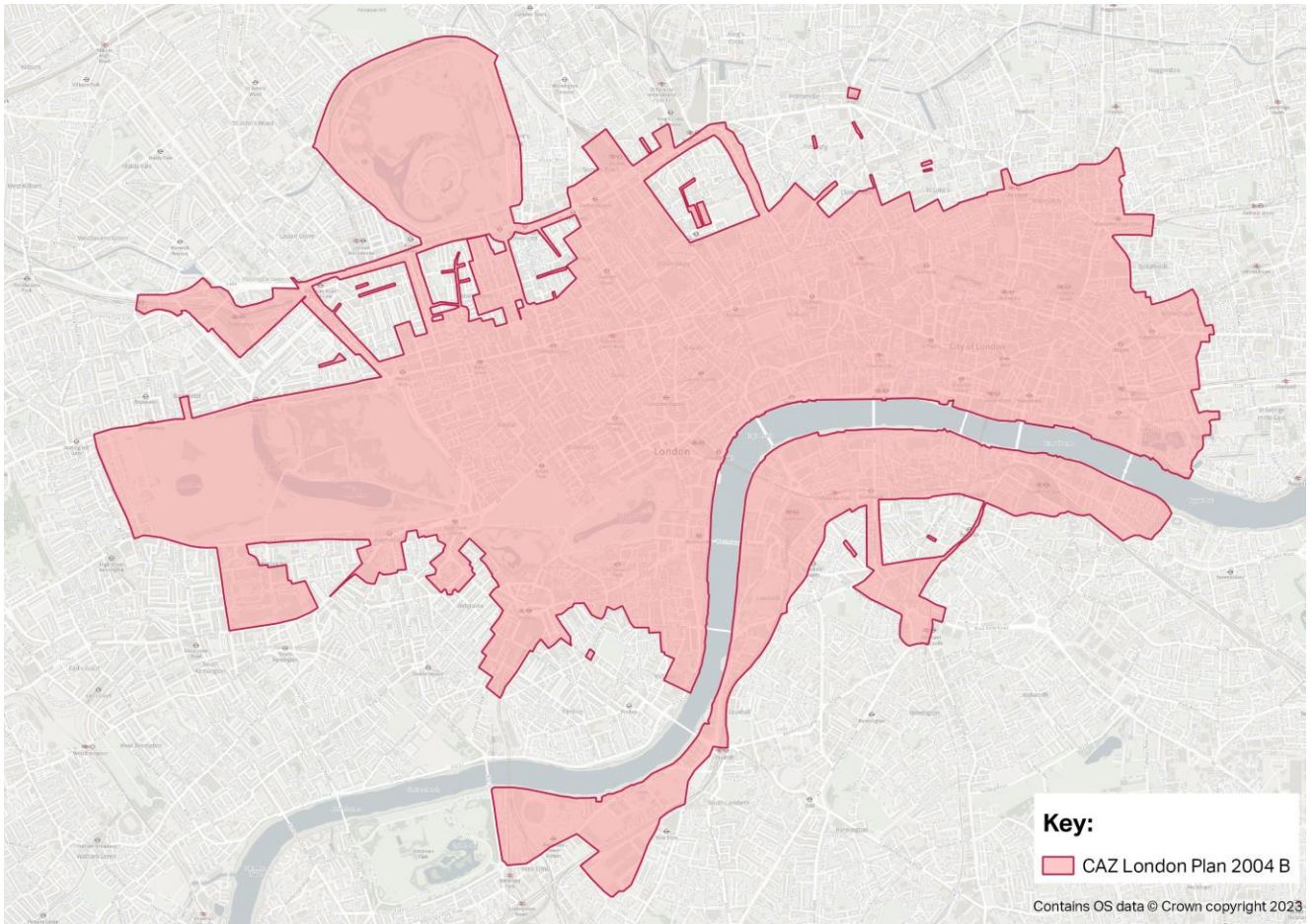


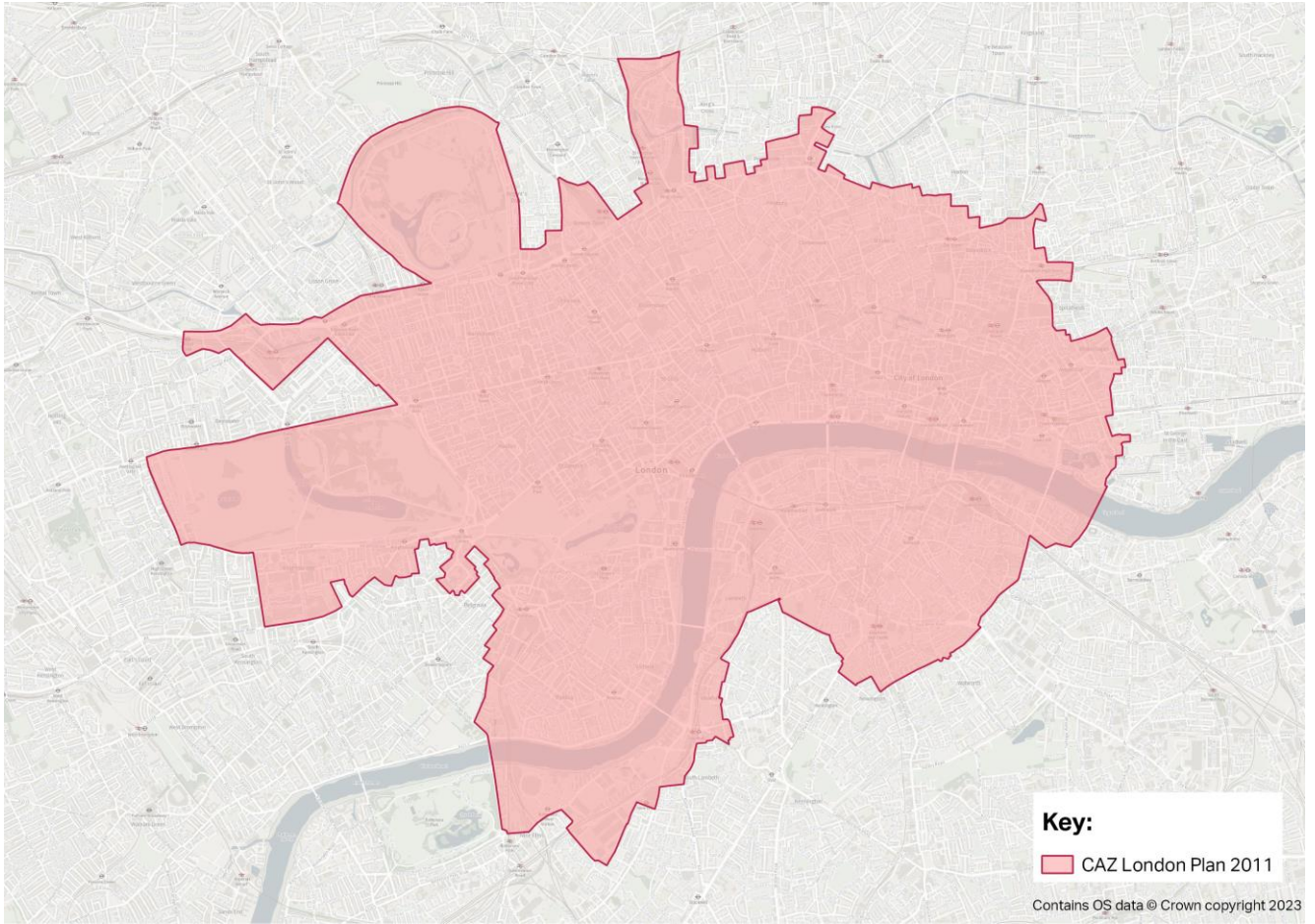
All boroughs have now defined the local boundary of the Central Activities Zone. To see that boundary, you can use the Planning Datamap which is available at <https://apps.london.gov.uk/planning/>, and use the Good Growth tab to access the Central Activities Zone layer. A screenshot is shown below. This tool will help you identify specific sites.

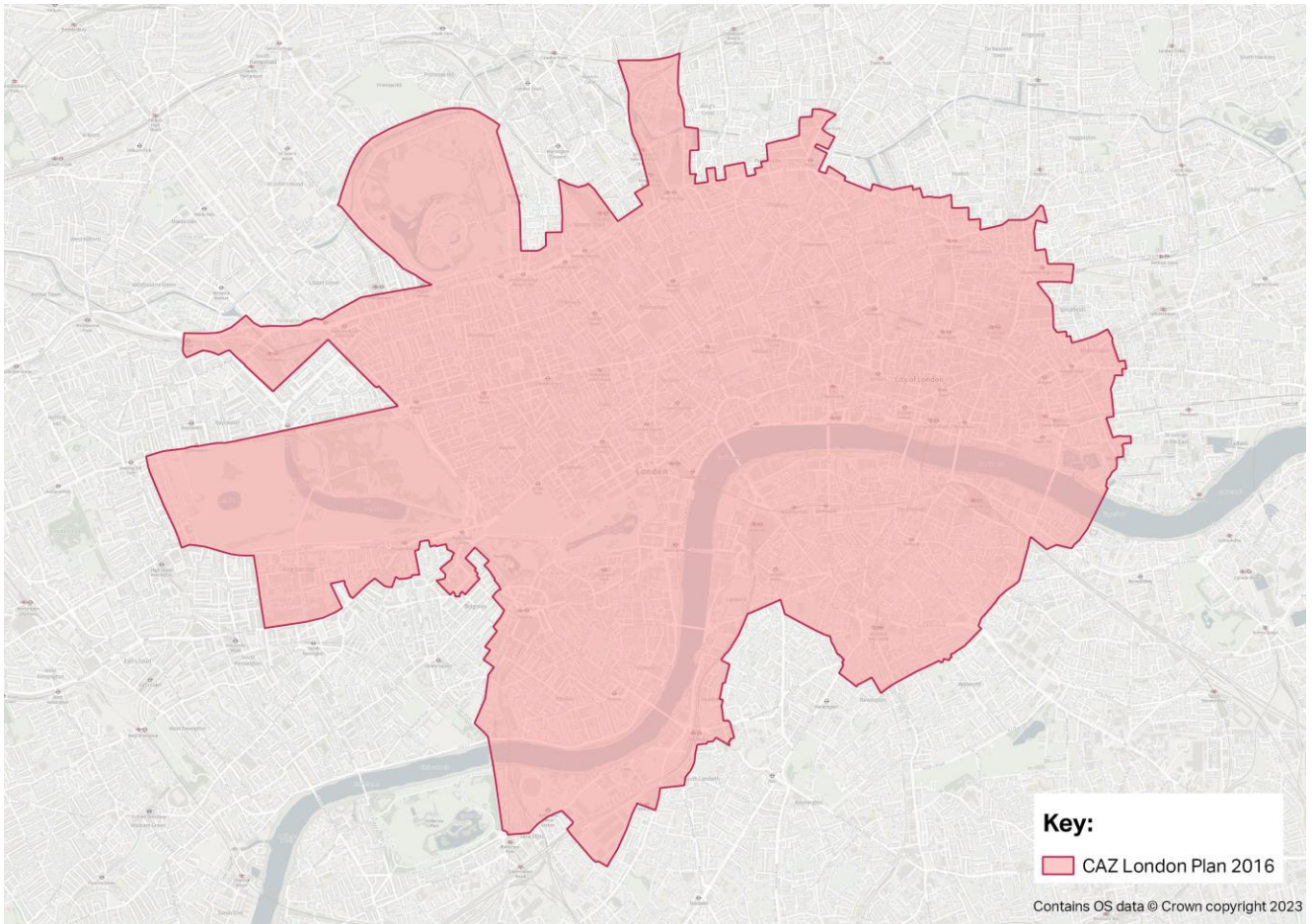


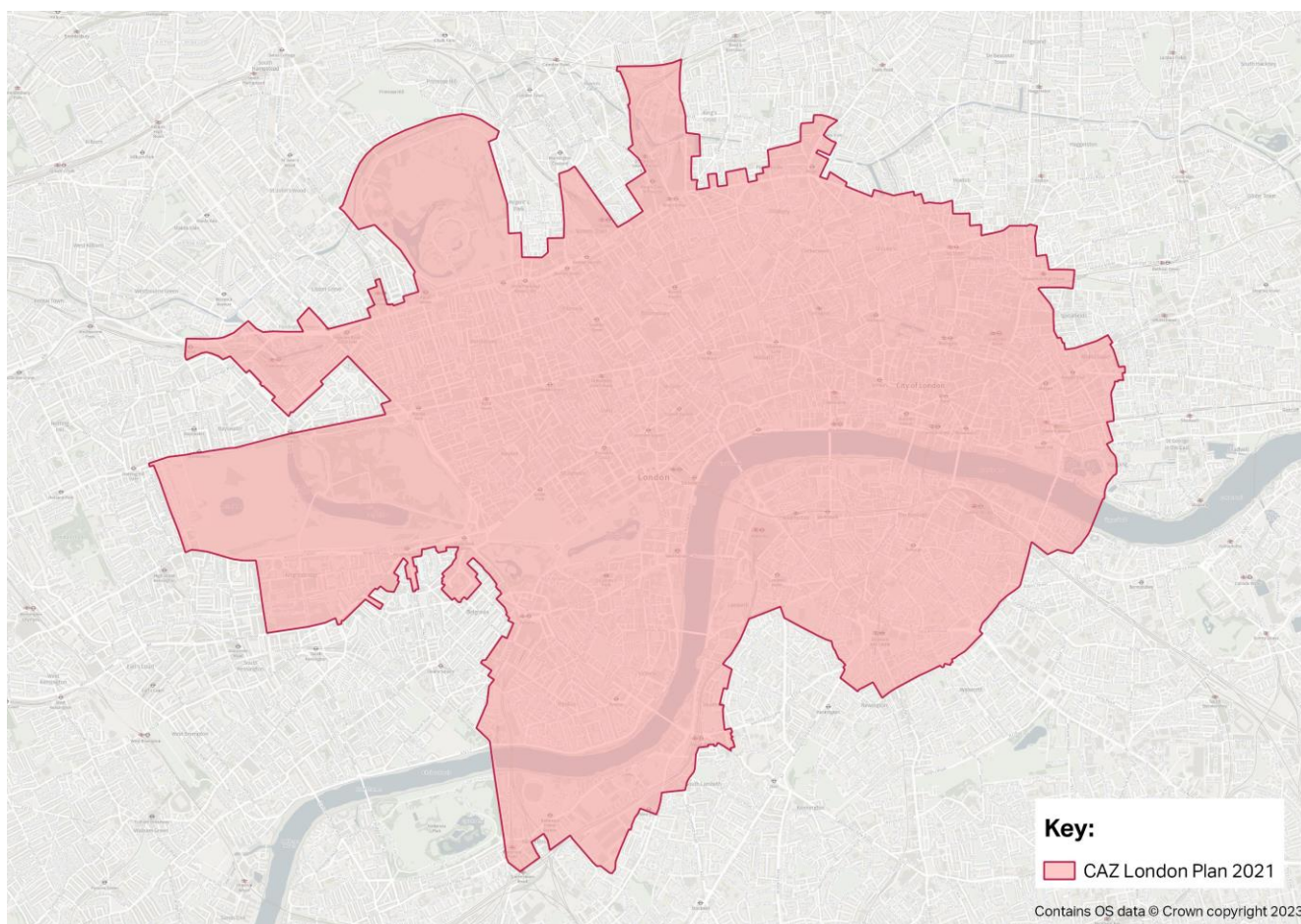
In addition to this information, the Greater London Authority also holds a number of historic Geographical Information Systems (GIS) layers relating to previous London Plans, included below. The key gives the name assigned to each of the layers on our GIS records.











If you have any further questions relating to this matter, please contact me, ensuring that you quote the reference at the top of this letter.

Yours sincerely

Head of the London Plan and Growth Strategies

If you are unhappy with the way the GLA has handled your request, you may complain using the complaints procedure, available at: <https://www.london.gov.uk/about-us/governance-and-spending/sharing-our-information/freedom-information>