



Eastern Elevation



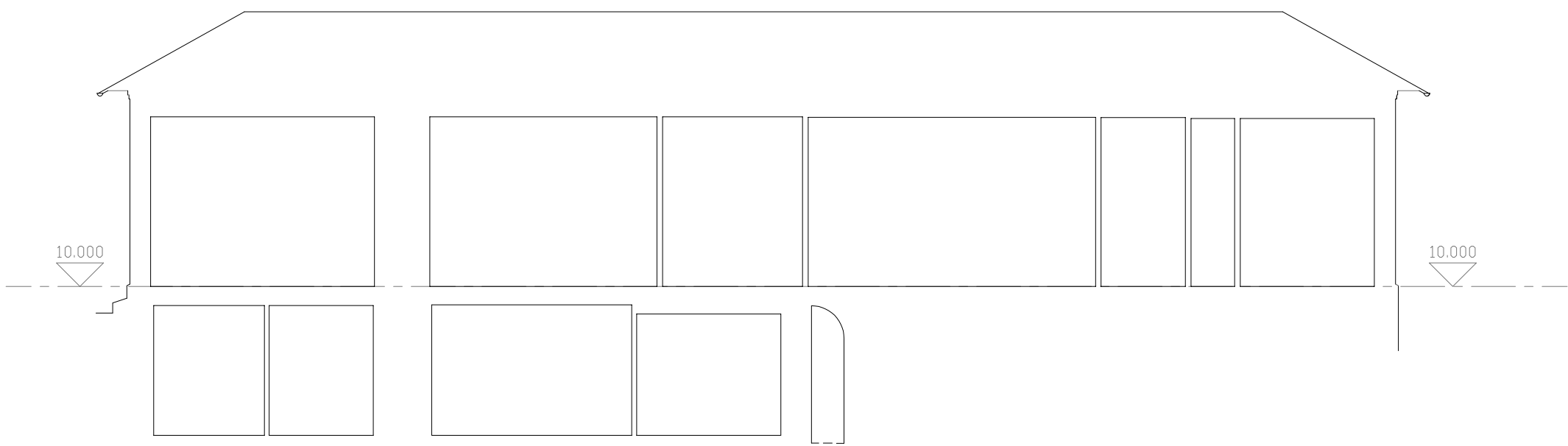
Northern Elevation



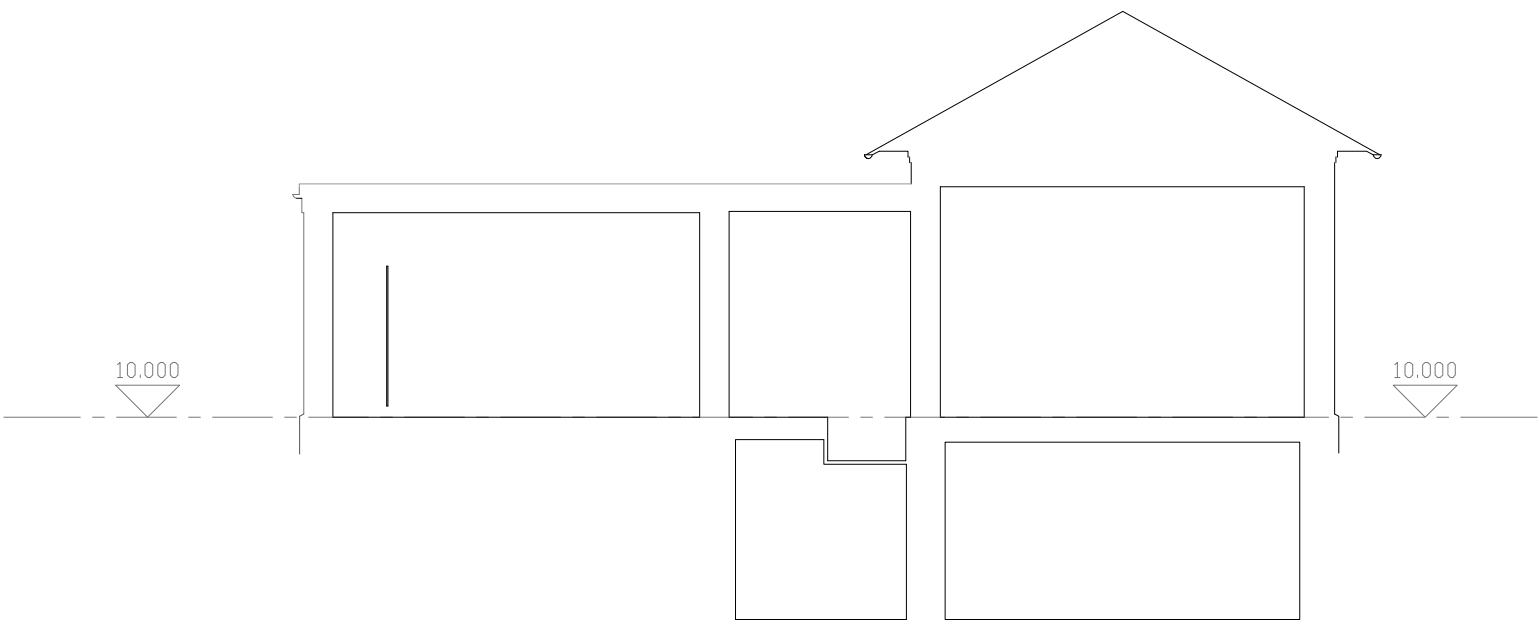
Southern Elevation



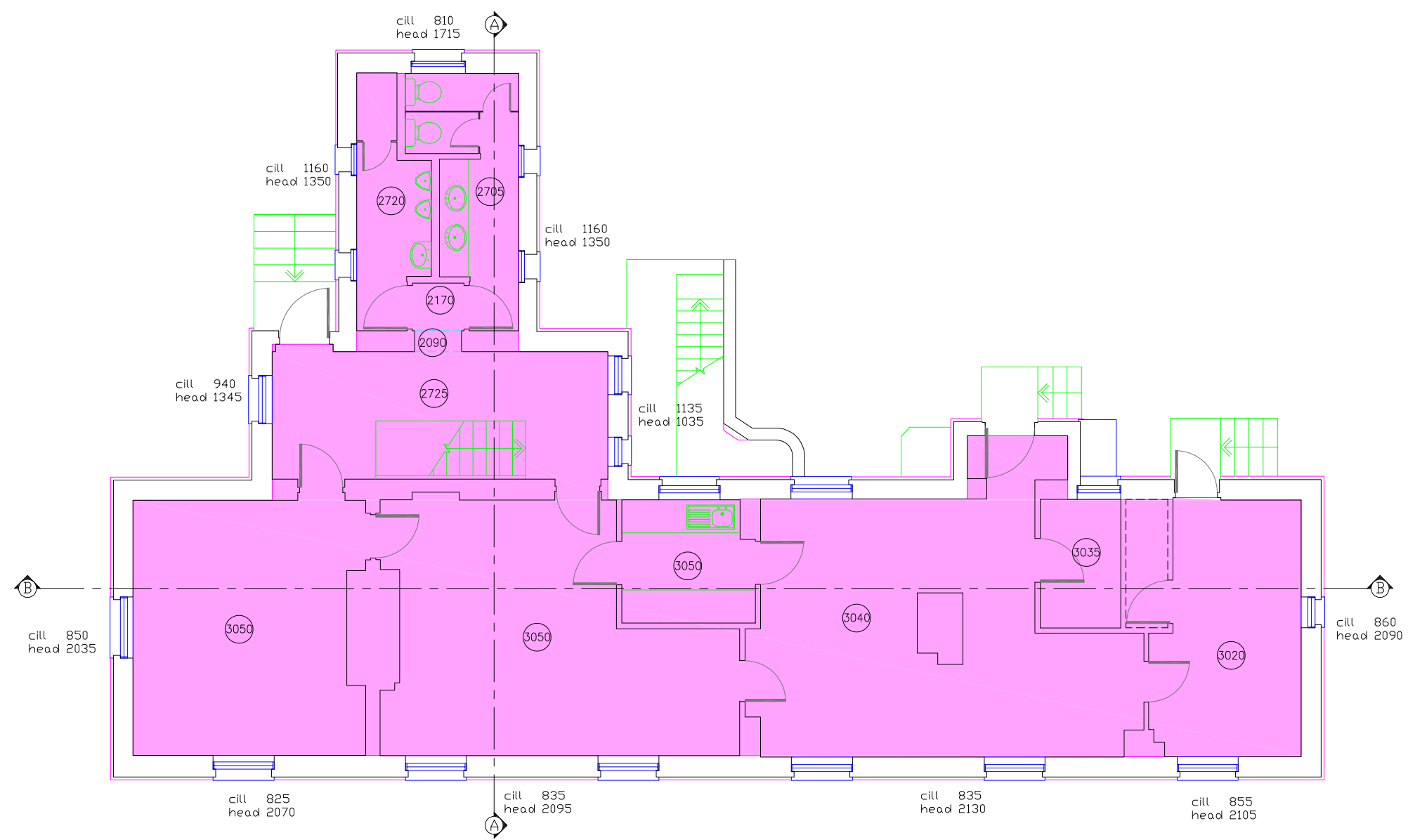
Western Elevation



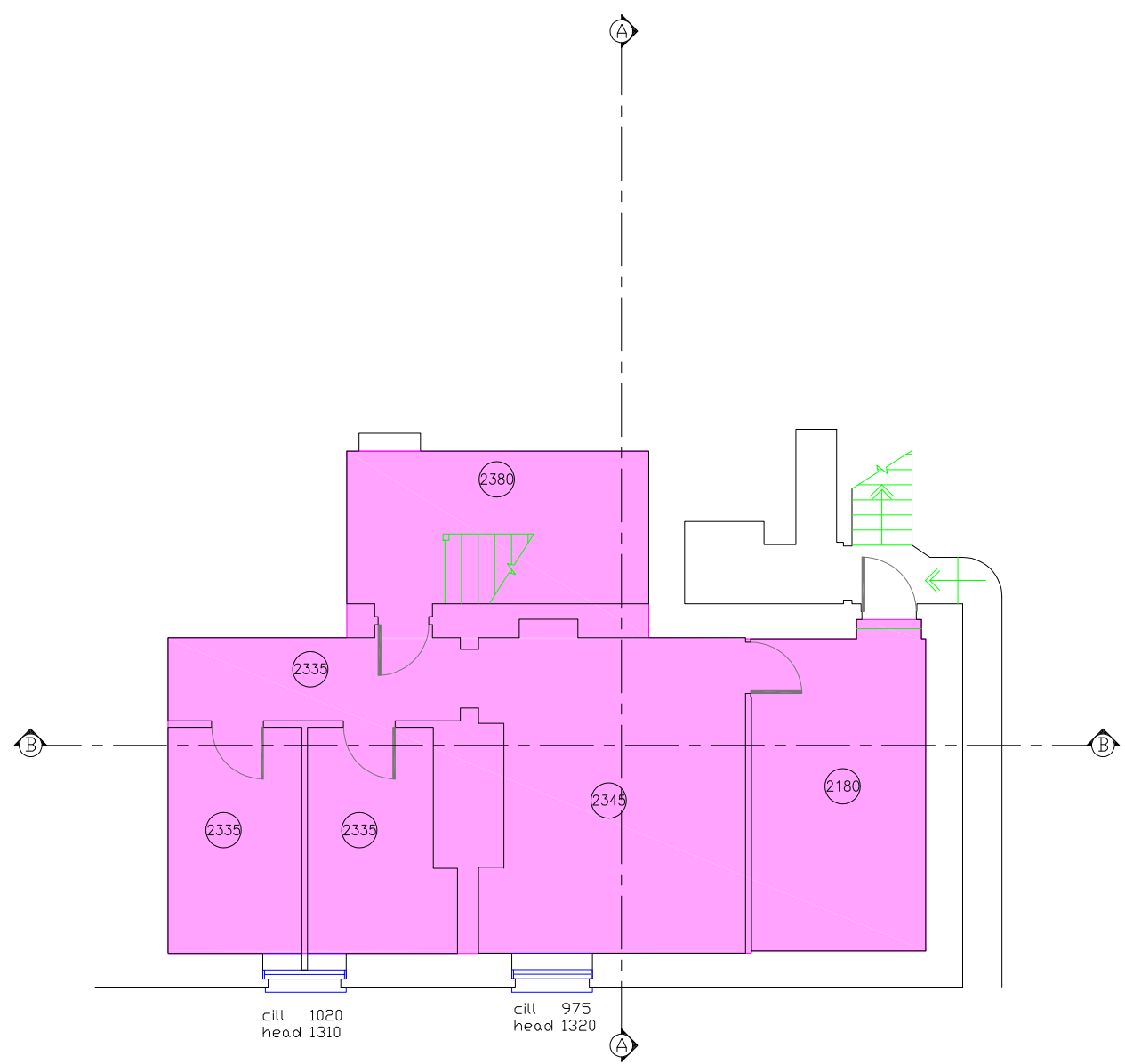
Section B - B



Section A - A



Ground Floor



Basement

<b>Project</b>  Avison Young The Observatory Repository Road London SE18 4BQ	<b>Title</b> Plans, Sections & Elevations	<b>Notes &amp; Revisions</b>	<div>0246810metres</div> <div>ALL DIMENSIONS TAKEN TO FACE OF DRY LINING OR WALL CLADDING IF APPLICABLE.</div> <div>ALTHOUGH EVERY ENDEAVOUR IS MADE TO PROVIDE AN ACCURATE SURVEY DRAWING IT IS RECOMMENDED THAT CRITICAL DIMENSIONS SHOULD BE CHECKED ON SITE. INACCESSIBLE AREAS WILL BE SHOWN USING A BROKEN LINE.</div>	<div>Areas</div> <div><div>GIA =</div><div>Ground: 142.3 Sq M</div><div>Basement: 65.4 Sq M</div><div>1532 Sq Ft</div><div>704 Sq Ft</div><div>Total: 207.7 Sq M</div><div>2236 Sq Ft</div></div>	<div><b>Ross Laird</b></div> <div>measured surveys</div> <div>5 Lower King Street</div> <div>Royston, Herts SG8 5AL</div> <div>01763 249949</div> <div>surveys@rosslaird.co.uk</div> <div>www.rosslaird.co.uk</div>
	<b>Ref</b> 3517 - 02b				
	<b>Scale</b> 1:100 on A1				
	<b>Date</b> November 2022				