

LOCAL POLICE ESTATE
AND PUBLIC ACCESS

ENFIELD BOROUGH



METROPOLITAN
POLICE

TOTAL POLICING



ENFIELD BOROUGH

Front Counters

Conventional police station Front Counters offering all policing services with secure and private facilities

24/7 Front Counter - Edmonton Police Station
Standard Front Counter - Enfield Police Station
24/7 Front Counters are open 24 hours a day, seven days a week.

Contact Points

Contact Points are locations for non-urgent face-to-face contact, where the public can meet their local police at regular known times.

- o Southgate Police Station
- o 864-866 Hertford Road, Freezywater, Enfield, Middlesex, EN3 6UD

Contact Points are open every Wed-Thur evening between 19.00 and 20.00 and every Saturday afternoon between 14.00 and 15.00

If this borough feels that further Contact Points are required to meet local demand, MOPAC / MPS are prepared to consider low cost options to achieve this.

Possible additional Contact Points:

- o North Middlesex Hospital, Sterling Way, London, N18 1QX
- o Morrisons, Aldermans Hill, N13 4YD

Deployment Bases

Deployment bases are where the borough's Safer Neighbourhood Teams, Borough Tasking Teams and / or Emergency Response and Patrol officers and PCSOs start and end their tours of duty.

- o 864-866 Hertford Road, Freezywater, Enfield, EN3 6UD
- o Edmonton Police Station
- o Enfield Police Station
- o Lincoln Road Patrol Base, Units 17-19, Great Cambridge Industrial Estate, Lincoln Road, Enfield, EN1 1SH
- o Southgate Police Station

LOCAL POLICE ESTATE AND PUBLIC ACCESS: ENFIELD BOROUGH

Other Safer Neighbourhood Team Locations

As well as the locations shown above, there may be other bases where the borough's Safer Neighbourhood Teams work. These will only be occupied when officers and PCSOs are not out on patrol and are not public access points.

- o The facilities required to support the borough's Safer Neighbourhood Teams are provided within those buildings detailed above.

Context Issues

- o MOPAC/MPS consulted on the proposal to provide a 24 hour Front Counter at Edmonton Police Station; Standard Front Counter at Enfield Police Station and to close the Front Counters at Southgate and Winchmore Hill. This will be implemented.
- o Four Contact Point facilities will be provided across the borough, including Southgate Police Station, not including options being pursued at Morrisons and North Middlesex Hospital.
- o Feedback from the consultation process identified the need to provide 24/7 Front Counter facilities separate to the core custody facilities.
- o The Local Authority are keen to support MOPAC/MPS policing requirements; all opportunities will be explored further.

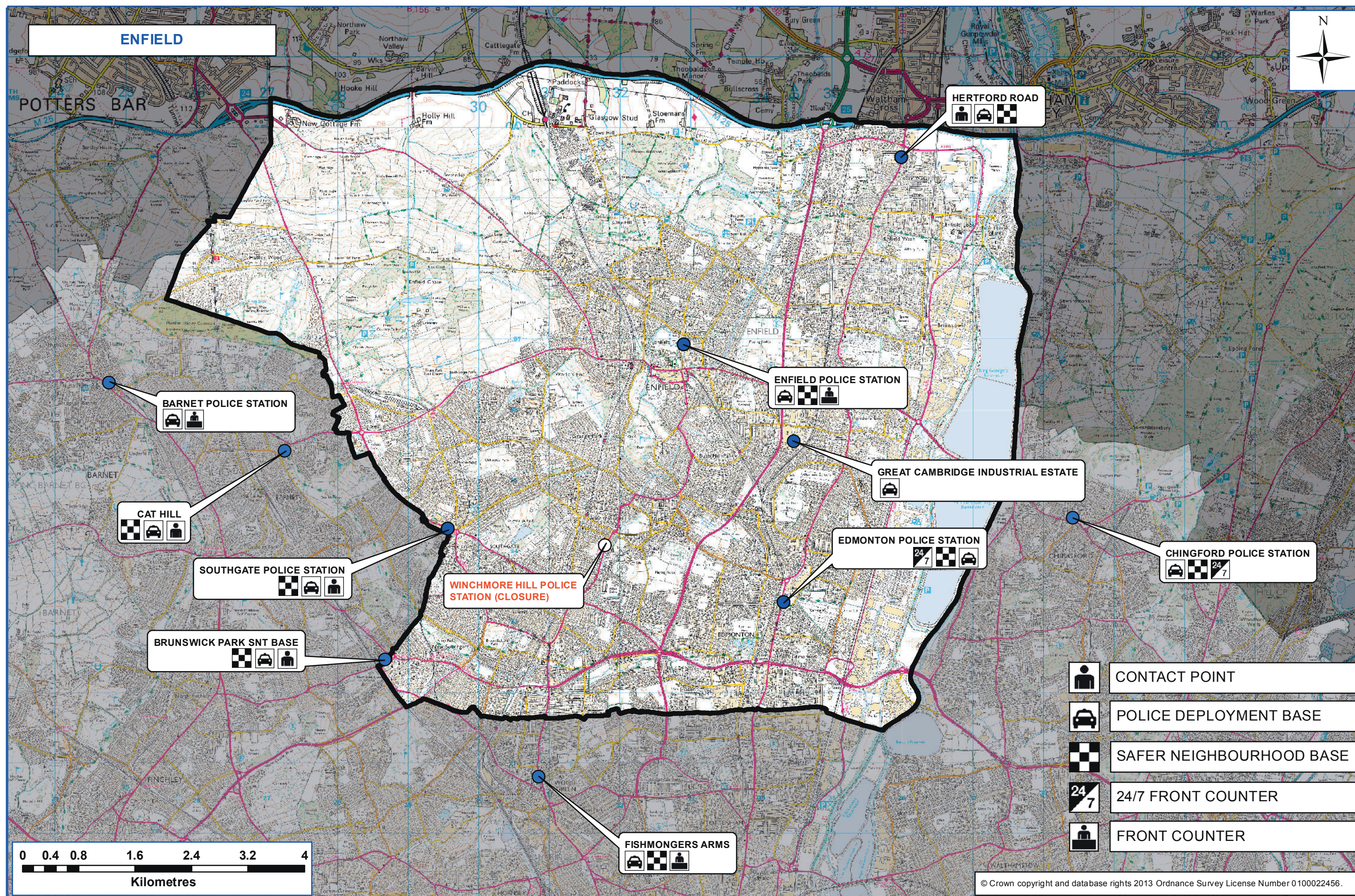
PRE-CONSULTATION ESTATE

Local Authority	Name	Front Counter as an 1/1/13	Front Counter Operational Need - Future State proposed as part of consultation
Enfield	Edmonton Police Station	24 Hour	24 Hour
	Enfield Police Station	24 Hour	Day Time
	Southgate Police Station	Day Time	None
	Winchmore Hill Police Station	Volunteer	None

POST-CONSULTATION ESTATE

Front Counter Operational Need post consultation	Additional comments
24/7 Front Counter	
Standard Front Counter	
Contact Point	The Front Counter will close as in the consultation proposals and a Contact Point will be opened.
None	

Public Access Facility	Number
24/7 Front Counter	1
Standard Front Counter	1
Contact Points	2



METROPOLITAN POLICE TOTAL POLICING	TITLE: ENFIELD BOROUGH LOCAL POLICING MODEL		SCALE AT A3: 1:50,000	REF: 0939 - YE
	COMPUTER AIDED MODELLING BUREAU Operational Support Group, Property Services		DATE PRODUCED: MARCH 2013	VERSION: 1.2