

ABOLITION OF BRITISH WATERWAYS AND CREATION OF A NEW WATERWAYS CHARITY



Inland Waterways



Working Waterway
Heritage (old)



Working Waterway
Heritage (new)



Countrywide
Network



Haven for People



Haven for Wildlife



Local Communities

October 10 – February 11

- Public Bodies Bill first reading
- Minister creates Advisory Panel to appoint 'Transition' Trustees

April 11– June 11

- Consultation on general overarching principles, scope, governance, outline business case

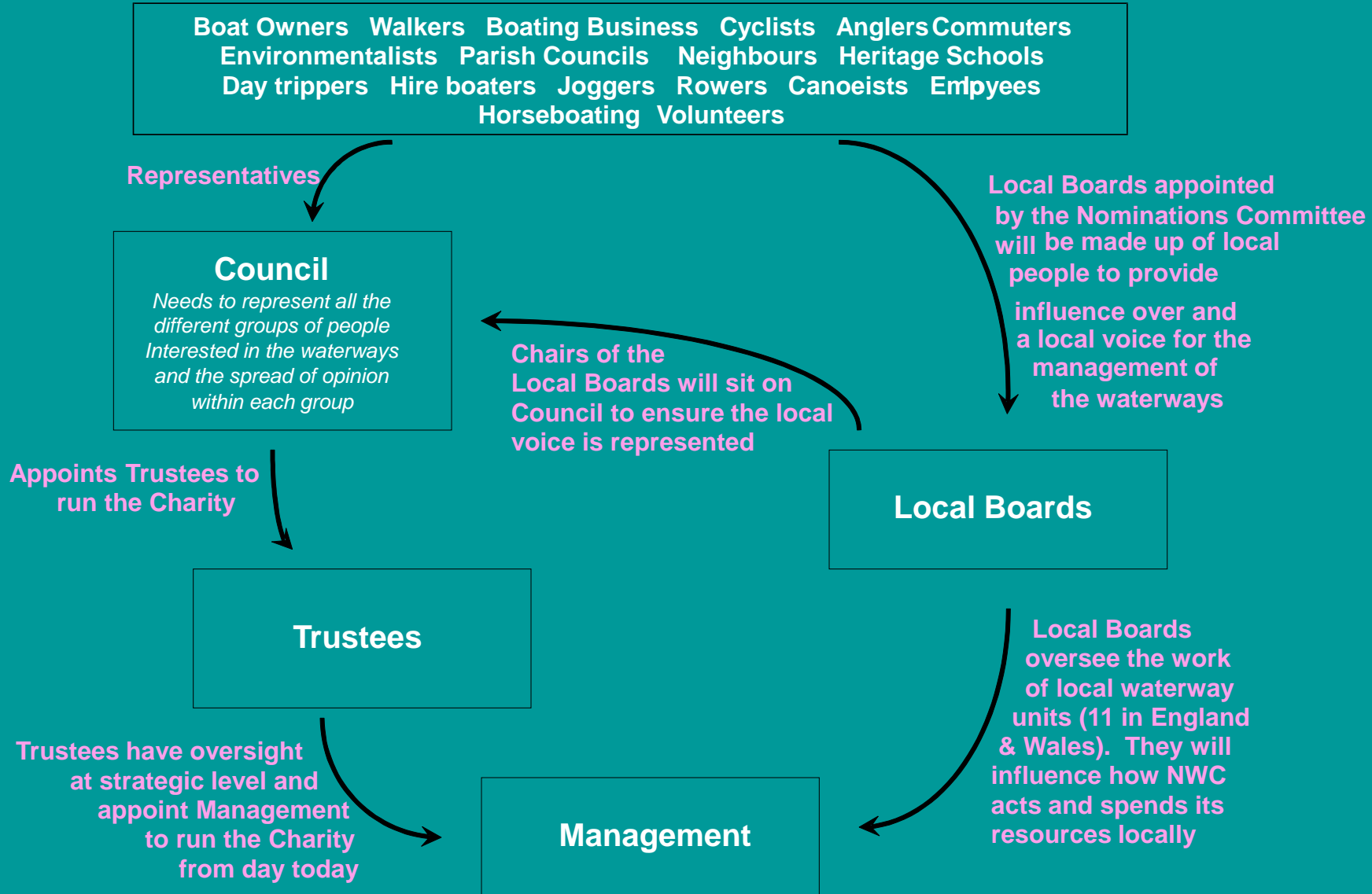


- Selection of Transition Trustees
- Charity created on paper
- Constitution of charity finalised
- Funding contract with Government finalised. EU agreement obtained
- Council make up agreed and appointments finalised
- Local Boards established



Other Navigations and Scotland





Function

- To appoint (as an 'electoral college'), and hold accountable, the Board of Trustees. Monitor fulfilment by Charity of its charitable purposes.

Powers

- Appoint trustees from candidates proposed by Nominations Committee.
- Dismiss Trustee Board as a whole by special resolution (75% majority).
- Through Scrutiny Committees monitors performance of Charity, reporting to general meetings.
- Helps shape policy development by
 - debating important points of strategy or principle to provide guidance and perspective to Board of Trustees
 - raising issues of concern for Board of Trustees to pursue
 - reference point and sounding board to help Board of Trustees to develop proposals and policies
- Appoint auditors & other company law 'shareholder' powers.

Function

- Principal Governing Body – trustees of the Charity. Ultimate responsibility for all that the Charity does with ‘general control and management of administration’.

Powers

- Appoints Executive; determines policy & strategy; approves business plans.

Form

- 10 [8-12] individuals, normally serving 2 terms of 3 years; retirement by rotation.
- Pre qualification as candidates by Nominations Committee on merit by reference to competency and experience. No requirement to be a member of Council.
- Appointment by Council
- Must exercise independent judgement & not act in representative capacity
- Chairman appointed by Trustees from amongst their number & ratified by Council

- **Essential part of Government's plans for localisation**
- **Each waterway unit will have its own Board (8–10 people)**
- **Wales will have its own 'all Wales' Board**
- **Made up of local people who will hold local management to account and oversee work of NWC at local level**
- **Advisory only but hugely influential**
- **Chairs of Boards will sit on NWC Council**
- **Meets six times a year**

Selection/Appointments Process

- Defra has set up an Advisory Panel
- First task to find Transition Trustees
- Then fill places in Council
- Then appoint Chair to Local Boards



- **NWC will assume all the powers and responsibilities of BW**
- **Ability but no powers to take on other navigations**
- **Will continue to want to play its part in disseminating advice and best practice amongst all navigation authorities**

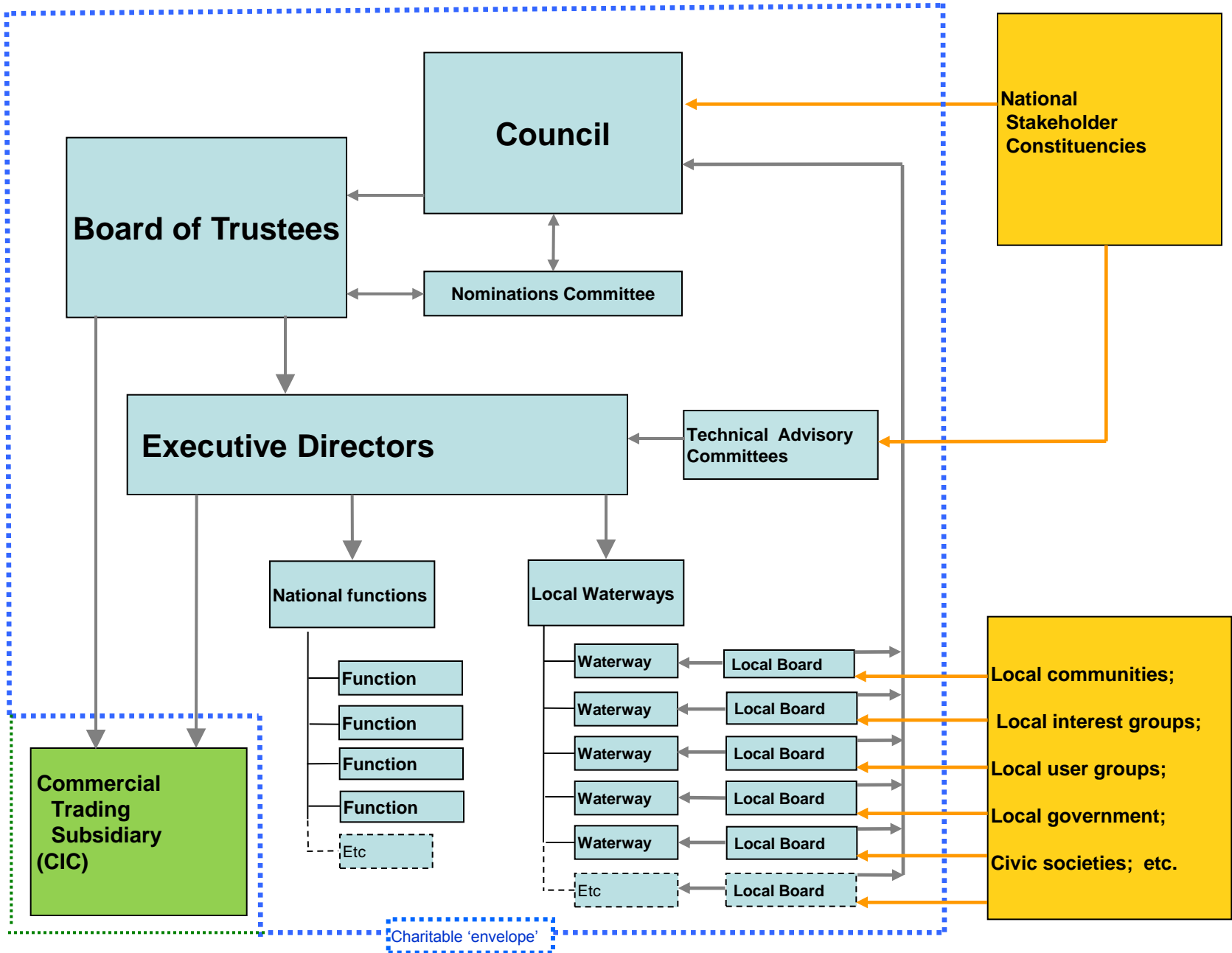


What will be different?

- Governance at a national level
- Governance at a local level
- Engagement and Partnership
- Funding



NEW WATERWAYS CHARITY



What will be different?

- Volunteering
- Management
 - Sharing/developing plans
 - Explaining/showing what we do
 - Finding common solutions

