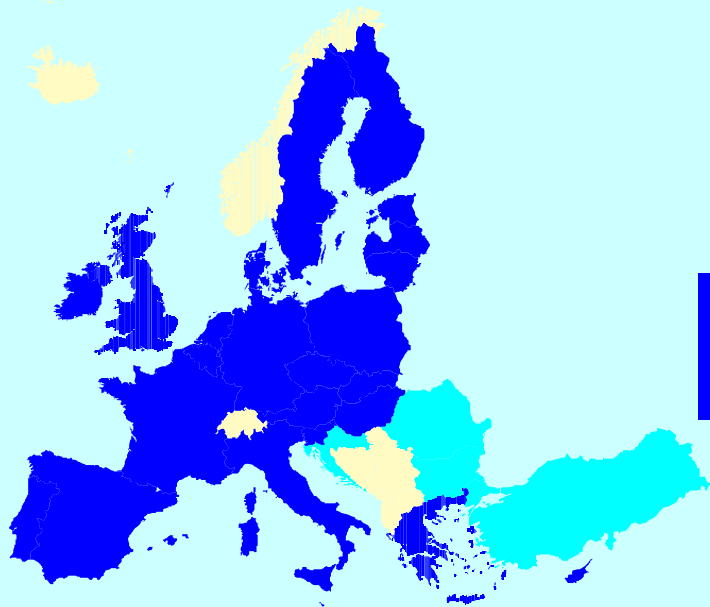


Urban Audit



Torbioern.Carlquist@cec.eu.int

Chapter 1



Background

Why Urban statistics

- “**Cohesion**” is the basis of Regional EU Policy, aiming at **fewer disparities** between European regions
- **Cities** (urban agglomerations) play a specific and important role in this policy goal
- Hence: In the mid 90s, the Commission saw a growing need for **reliable, quantitative** urban data
- **Comparability** would be a key issue of such Europe-wide urban statistics

The challenge of co-operation

Many partners involved

- The cities
 - Data supplier AND users
- Regional Statistical Offices / other agencies
- National Statistical Offices (= national co-ordinator)
- Eurostat
 - incl. contractors for Europe-wide co-ordination and methodological advice
- DG Regional policy (the major user)
- Quality is best fostered by intensive co-operation and **partnership relations**

Urban Audit dataset

- 336 variables (raw data) and 283 Indicators (derived data)
- For 258 cities in 27 European countries
- Reference years: 2001 (complete dataset), 1991 and 1996 (reduced dataset)
- 3 Spatial units: core city, Large urban zone, sub-city districts

The statistical domains

1. DEMOGRAPHY

- 1.1 Population
- 1.2 Nationality
- 1.3 Household Structure

2. SOCIAL ASPECTS

- 2.1 Housing
- 2.2 Health
- 2.3 Crime

3. ECONOMIC ASPECTS

- 3.1 Labour Market
- 3.2 Economic Activity
- 3.3 Income, Disparities and Poverty

4. CIVIC INVOLVEMENT

- 4.1 Civic Involvement
- 4.2 Local Administration

5. TRAINING AND EDUCATION

- 5.1 Education and Training (Provision)
- 5.2 Attainment of Educ. & Training

6. ENVIRONMENT

- 6.1 Climate/ Geography
- 6.2 Air Quality and Noise
- 6.3 Water
- 6.4 Waste Management
- 6.5 Land Use
- 6.6 Energy Use

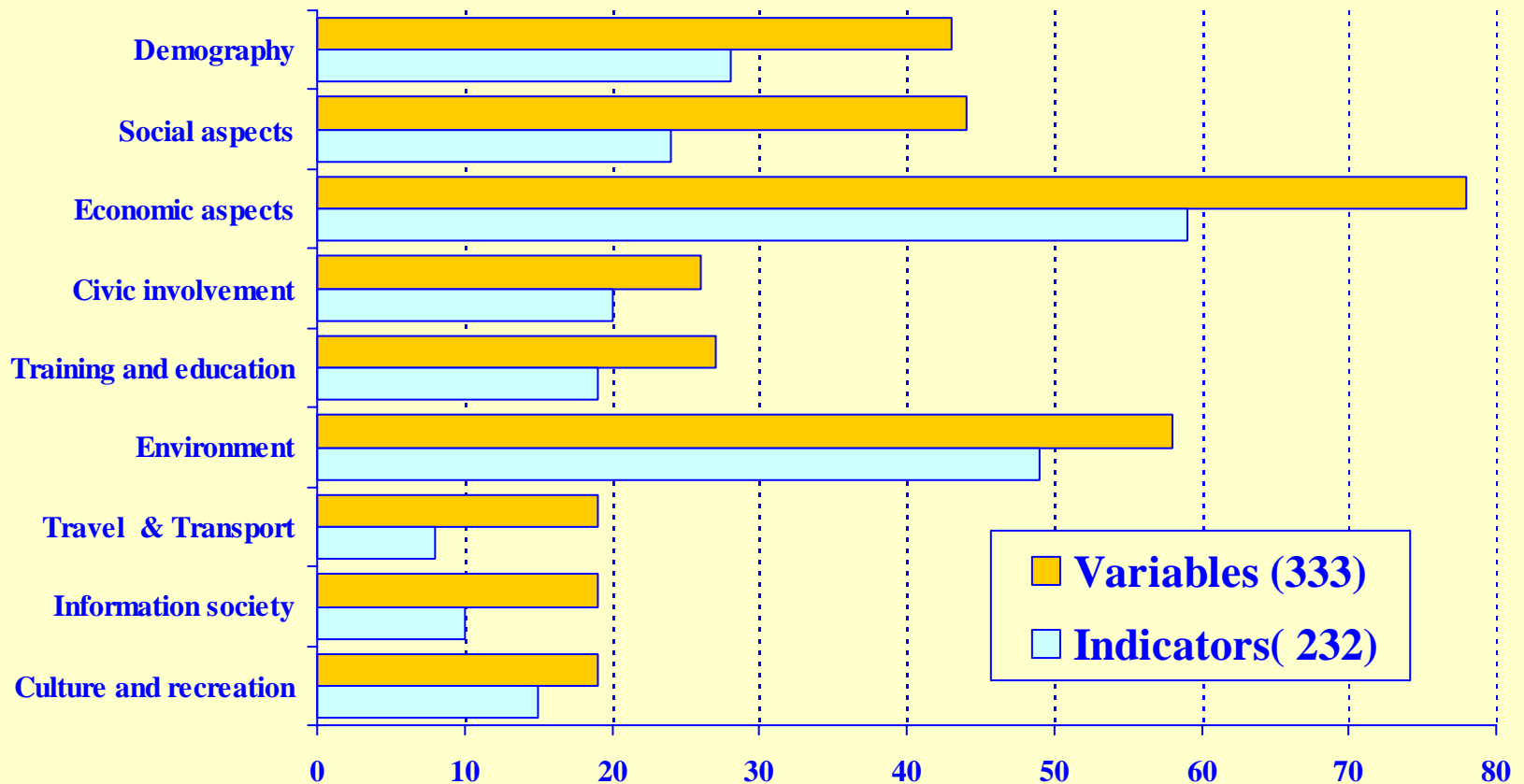
7. TRAVEL AND TRANSPORT

8. INFORMATION SOCIETY

9. CULTURE AND RECREATION

- 9.1 Culture and Recreation
- 9.2 Tourism

Variables and Indicators



Next data collection 2006

- Reduced number of variables (and hence indicators)
 - Drop variables with low response rates
 - Add some important variables
- Collect some variables centrally (by the Commission)
- Maintain the 3 spatial levels

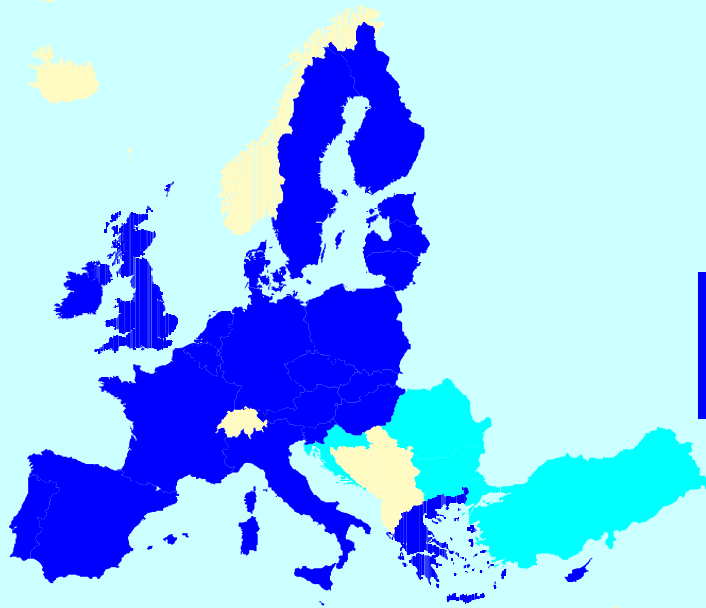
Perception survey

- As a complement, a perception survey was realised (EuroBarometer)
 - 300 persons questioned in 31 cities
 - Only old Member States
 - Telephone survey
 - Date: January 2004
- Very interesting results
- Will be repeated in 2006 for old and new MS

Public data

- Eurostat's web site:
- *<http://europa.eu.int/comm/eurostat>*
- Web site of DG Regional Policy:
- *<http://www.urbanaudit.org/>*

Chapter 2



Spatial units

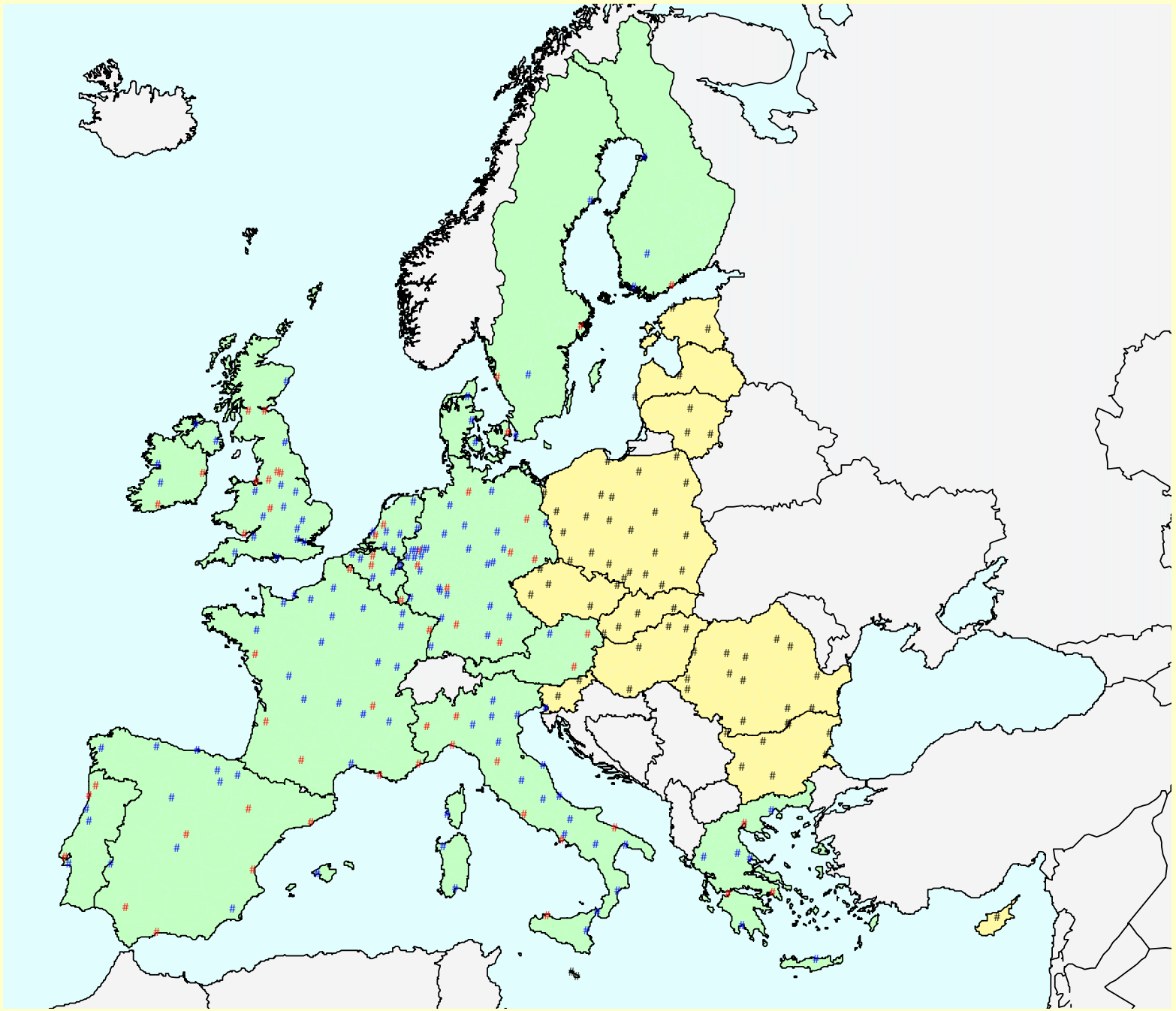
Three spatial levels

- ➔ central city (administrative unit)
- ➔ larger urban zone (approximation of functional urban region)
- ➔ sub-city district (neighbourhood)

Administrative unit

● *Commune / Municipality / Gemeinde*

- **A sample of 258 cities in EU-25 + BG,RO**
- Corresponds to the empowerment of the city administration
- France: Communauté d'agglomération;
Communauté urbaine (contains several communes)
- Specific focus on **medium-sized cities**
(50 000 to 250 000 inhabitants)



Larger Urban Zone (LUZ)

- Approximations of “Functional Urban Regions”
- NUTS 3 or districts (LAU 1) as building blocks
- ➔ “Common LUZ” in conurbations
- ➔ Not all midsize cities have a LUZ
- ➔ The final list of LUZ: no real harmonisation

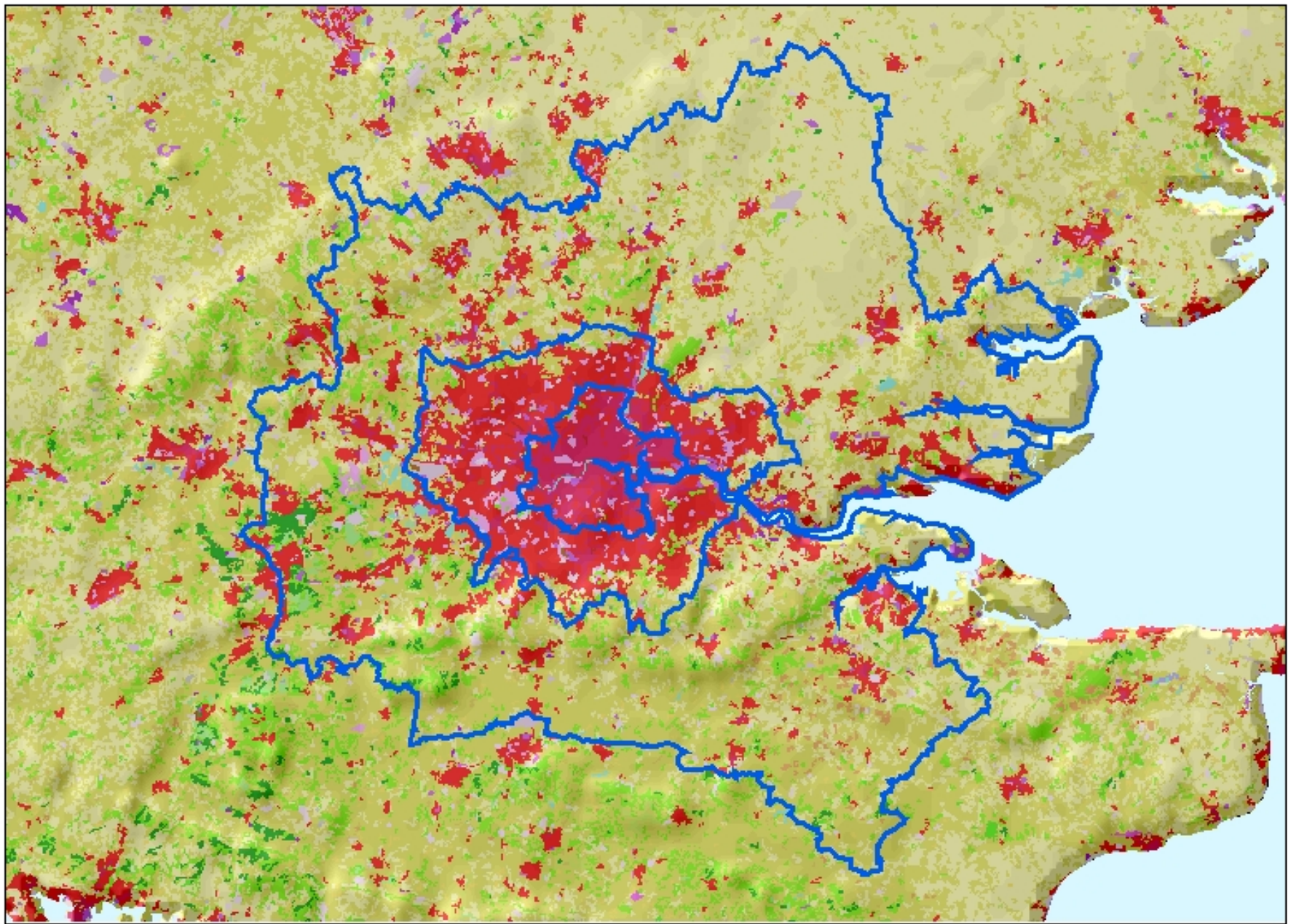
Sub-city districts (SCD)

- Thresholds: 5 000 – 40 000 inhabitants
- Difficult to respect thresholds
- Some countries introduced ad hoc SCD, which do not exist anywhere else
- Labels often missing – code and map needed to locate the SCD
 - “... information on intra-city disparities indispensable for further political action”
 - “... enable city authorities to gather precise information on possible ‘pockets of concern’ ”
 - “... pinpoint major disparities in terms of social cohesion ”

Kernel in London and Paris

Type	London	Population (millions)
Kernel	Inner London: City + 13 boroughs	2.8
City	Greater London	7.2
LUZ	London LUZ: 42 districts	11.6

Type	Paris	Population (millions)
City	Ville de Paris	2.1
Kernel	Smaller ring: city + 3 départements	6.2
LUZ	Larger ring = Ile de France	11.0



Which maps are available

- City boundaries
- Boundaries of the LUZ
- Source of map data: SABE (commune boundaries for Europe)
- Available in the GISCO database (Geographical Information System for the Commission)
- For internal use

Maps of Sub-City Districts

- Maps of Sub-City Districts have to be sent from Member States and PHARE countries
- Integrated into a common GIS (GISCO)
- Technical work done at DG REGIO

Conclusions

Statistical

- Challenging project with many partners involved
- Tight timetable
- Comparability probably lower than usual EUROSTAT standards
- Conceptual challenge of “spatial unit”, given diverging national realities

Political

- The concept of partnership with those involved is crucial for success
- Complex in terms of the co-ordination of tasks
- City data gain in importance for the next Structural Funds round
- Urban Audit should be regarded as an investment and continued!

Thanks for listening !

Any Questions

