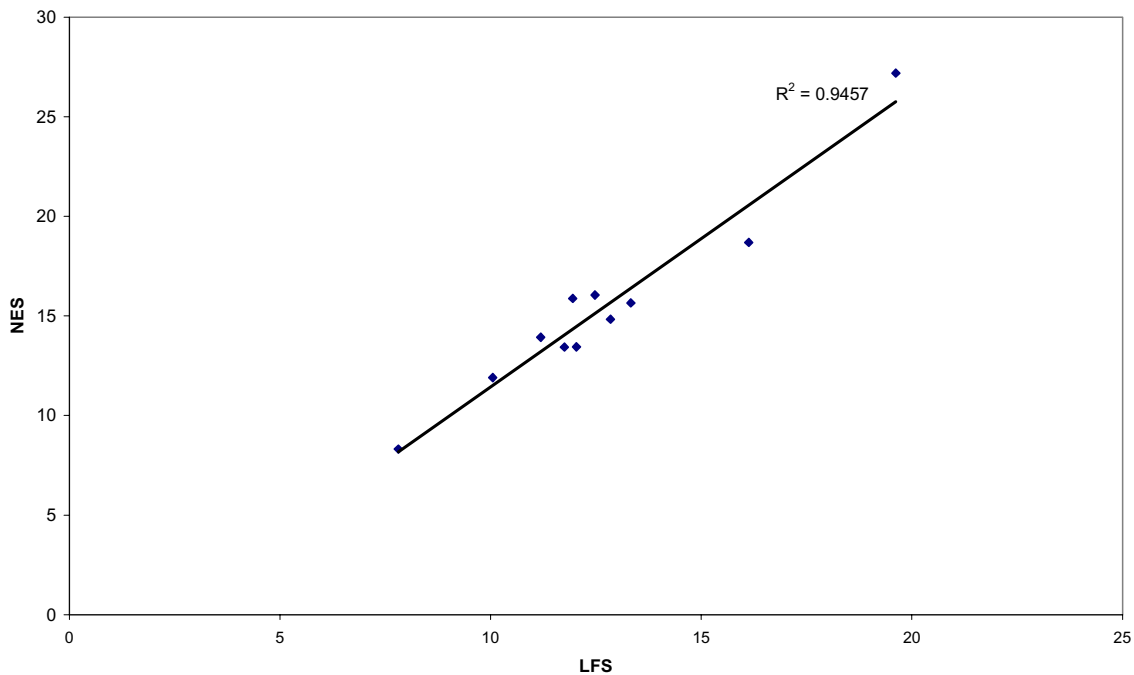


Appendix A. Comparing NES and LFS Estimates

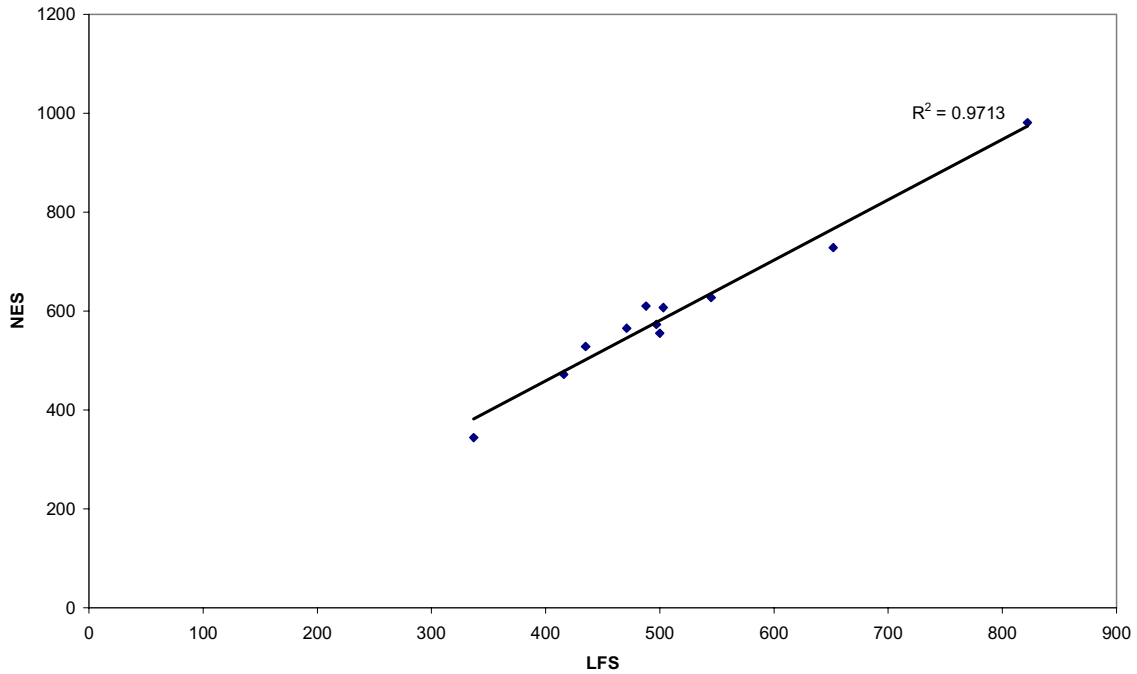
The earnings data used in this report have come from two different sources in an attempt to provide a robust view of earnings in the capital. The results of the two sources produce slightly differing results with the NES estimates typically being higher than the LFS estimates. This is likely to principally be the result of wage inflation as the NES data relate to 2002 and the LFS data relate to 2001. However, the important feature of the data for the purpose of this report is not that the figures match exactly but rather that they present the same broad picture. That is to say that we require the high paid industries in the LFS to also be the high paid industries in the NES. To test this we have plotted both the hourly and weekly earnings data, for all employees in Greater London, split by industry, in Figure A.1 and Figure A.2.

Figure A.1
Comparison of hourly average earnings by industry
from the NES and LFS 2001



Source: Special tabulations, Labour Force Survey & New Earnings Survey, ONS

Figure A.2
Comparison of weekly average earnings by industry
from the NES and LFS 2001



Source: *Special tabulations, Labour Force Survey & New Earnings Survey, ONS*

Both a visual inspection of the figures and the R-squared values attached to the two trend lines, show that the correlation between these two data sources is strong. It appears that the weekly data, which we have focused on in this report, is the most consistent between the two series.

The London Labour Market

Appendix B: Borough Labour Market Profiles

A Report for GLA Economics

**Prepared by:
NERA**

November 2003

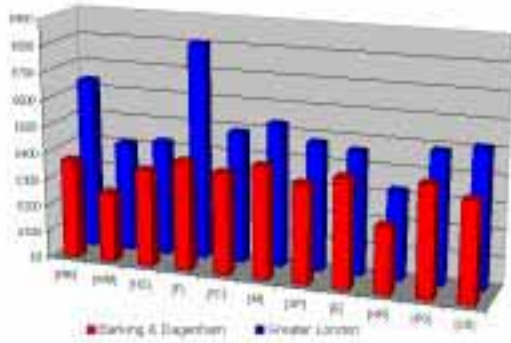
Introduction

This document forms part of the Final Report on the London labour market prepared by NERA. The document consists of a set of 33 fact sheets describing the situation in the 33 boroughs of London. Each fact sheet includes a set of graphs and tables that contain statistical information describing key features of each of the boroughs. The aspects that are covered in each fact sheet are:

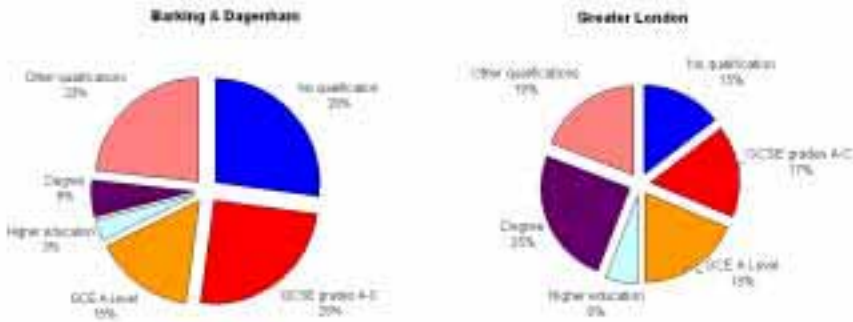
- The location of the borough in Greater London;
- The distribution of the population according to age, distinguishing by gender;
- The level of job density (i.e. number of jobs as a proportion of population of working age);
- Level of activity in the borough distinguishing between people who are (i) inactive, (ii) in employment, and (iii) unemployed as a proportion of the population of working age;
- Employment by industry in the boroughs. The charts present (i) the proportion of employees in each industry, and (ii) the growth in the number of employees in each industry;
- Average earnings by industry. The graphs show the level of average weekly earnings of residents working in each industry;
- Qualifications. The charts demonstrate the proportions of the population who have obtained different qualification levels (no qualifications, GCSE grades A-C, etc.);
- The performance level of the schools under the Local Education Authority (LEA) in each of the boroughs. The tables present the rank of the LEA in terms of some key performance indicators; and
- Level of deprivation in the borough. The charts present the score for income and employment deprivation in the boroughs.

THE LONDON LABOUR MARKET
BARKING & DAGENHAM

AVERAGE WEEKLY EARNINGS by INDUSTRY 2001 Data



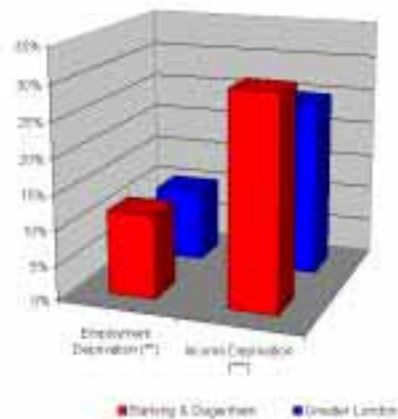
QUALIFICATIONS 2001 Data



SCHOOL PERFORMANCES 2002 Data

	Ranking position of the Borough (*)
-Average point score at KS2	22
-Average point score at KS3	23
-Percentage of pupils aged 15 who reached school leaving age with no GCSE or GNVQ passes	27
-Percentage of pupils aged 15 who gained five or more grades A-C in the GCSE or GNVQ	22

DEPRIVATION 2000 Data



(*) The Borough with the best performance in relation to the top 7.
 (**) The ratio of the ratio between the number of Employment Deprived in the Borough and the Working Age Population.
 (***) The ratio of the ratio between the number of Income Deprived in the Borough and the Total Population.

The London Labour Market

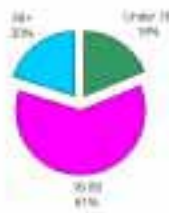
THE LONDON LABOUR MARKET BARNET

POPULATION by AGE 2001 Data

Males

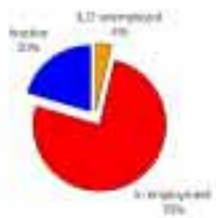


Females

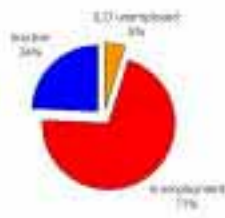


ACTIVITY 2001 Data

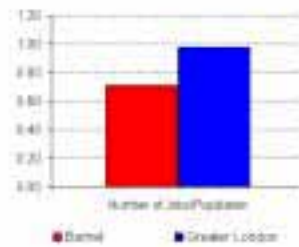
Barnet



Greater London

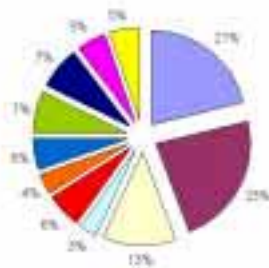


JOB DENSITY 2001 Data

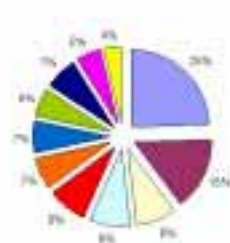


EMPLOYMENT by INDUSTRY 2001 Data

Barnet

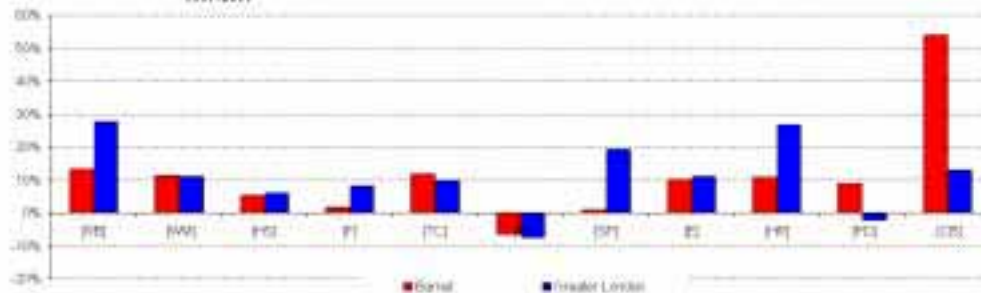


Greater London



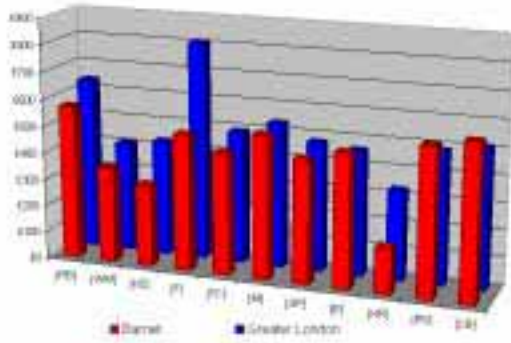
- Finance, real estate & business services (FR)
- Wholesale, retail & motor trade (WM)
- Health & social work (HS)
- Professional intermediation (PI)
- Transport, storage & communication (TC)
- Manufacturing (M)
- Other industries
- Education (E)
- Public administration & services (PS)
- Construction and base (CB)

Growth Rates of Employment by Industry 1997-2001

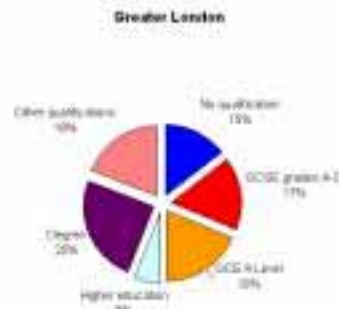


THE LONDON LABOUR MARKET
BARNET

AVERAGE WEEKLY EARNINGS by INDUSTRY 2001 Data



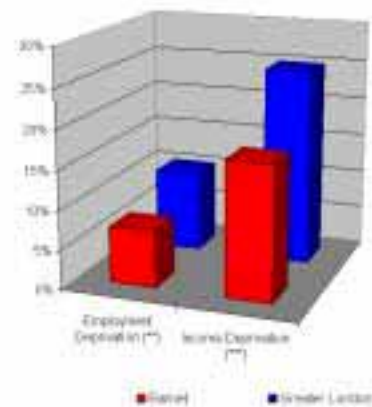
QUALIFICATIONS 2001 Data



SCHOOL PERFORMANCES 2002 Data

	Ranking position of the Borough (*)
-Average point score at KS2	5
-Average point score at KS3	4
-Percentage of pupils aged 15 who reached school leaving age with no GCSE or GNVQ passes	21
-Percentage of pupils aged 15 who gained five or more grades A-C in the GCSE or GNVQ	5

DEPRIVATION 2000 Data



(*) The Borough with the best performance is ranked as the top 1.
 (*) The index is the ratio between the number of pupils aged 15 who reached school leaving age with no GCSE or GNVQ passes in the borough, and the Working Age Population.
 (*) The index is the ratio between the number of houses Deprived in the borough and the Total Population.

The London Labour Market

THE LONDON LABOUR MARKET BEXLEY

POPULATION by AGE 2001 Data

Males

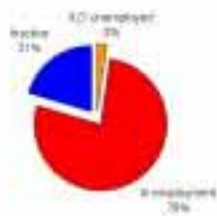


Females

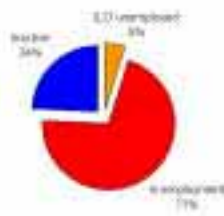


ACTIVITY 2001 Data

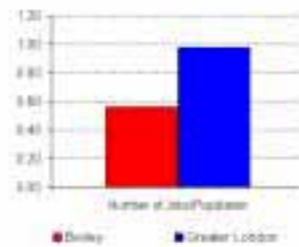
Bexley



Greater London

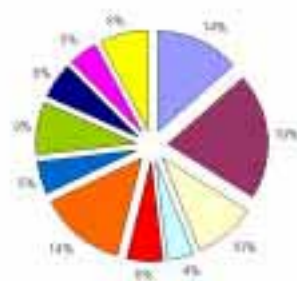


JOB DENSITY 2001 Data

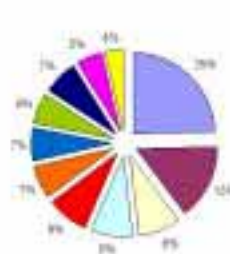


EMPLOYMENT by INDUSTRY 2001 Data

Bexley

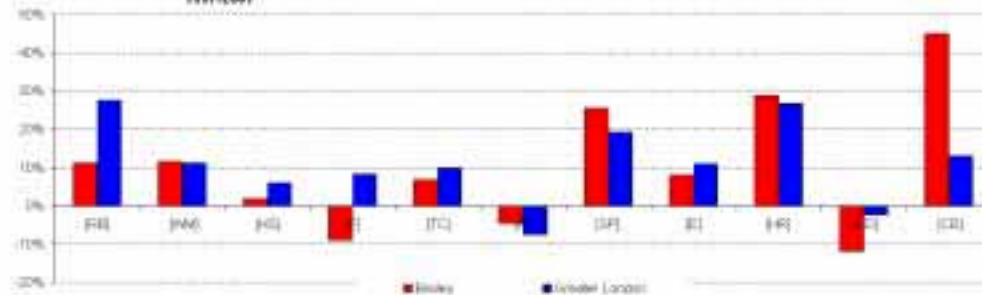


Greater London



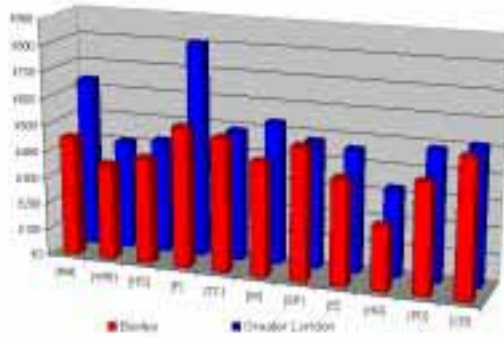
- Real estate, renting & business activities (S)
- Health & social work (H)
- Transport, storage & communication (T)
- Other community, social & personal (O)
- Hotels & restaurants (R)
- Construction and base (C)
- Wholesale, retail & motor trade (W)
- Finance & insurance (F)
- Manufacturing (M)
- Education (E)
- Public administration & defence (P)

Growth Rates of Employment by Industry 1997-2001

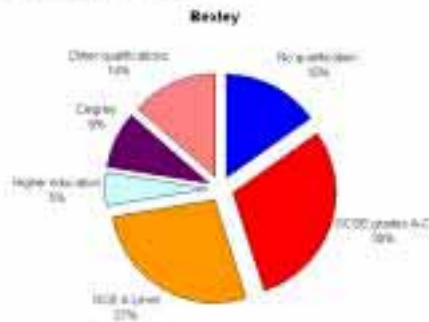


**THE LONDON LABOUR MARKET
BEXLEY**

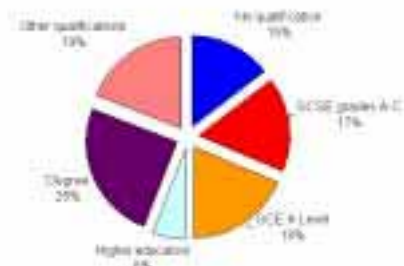
AVERAGE WEEKLY EARNINGS by INDUSTRY 2001 Data



QUALIFICATIONS 2001 Data



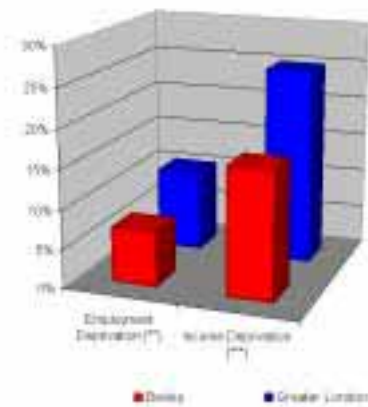
Greater London



SCHOOL PERFORMANCES 2002 Data

	Ranking position of the Borough (1)
-Average point score at KS2	16
-Average point score at KS3	10
-Percentage of pupils aged 15 who reached school leaving age with no GCSE or GNVQ passes	8
-Percentage of pupils aged 15 who gained five or more grades A-C in the GCSE or GNVQ	9

DEPRIVATION 2000 Data



(1) The Borough with the best performance is ranked as the top 1.
 (2) The ratio is the ratio between the number of Employment Deprived in the Borough and the Working Age Population.
 (3) The ratio is the ratio between the number of Income Deprived in the Borough and the Total Population.

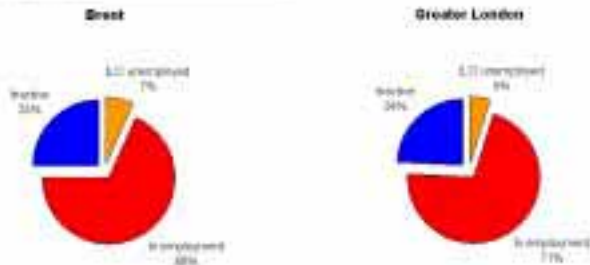
The London Labour Market

THE LONDON LABOUR MARKET BRENT

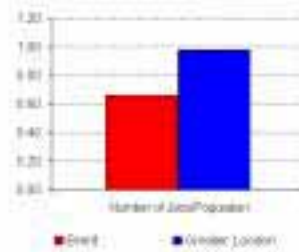
POPULATION by AGE 2001 Data



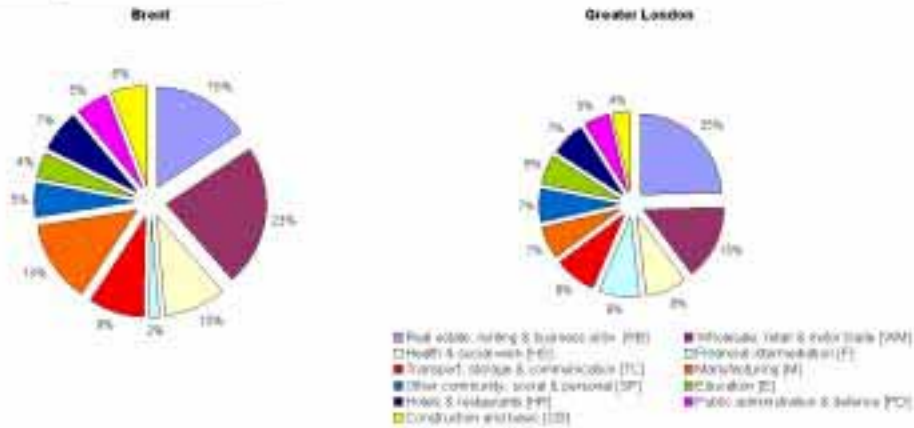
ACTIVITY 2001 Data



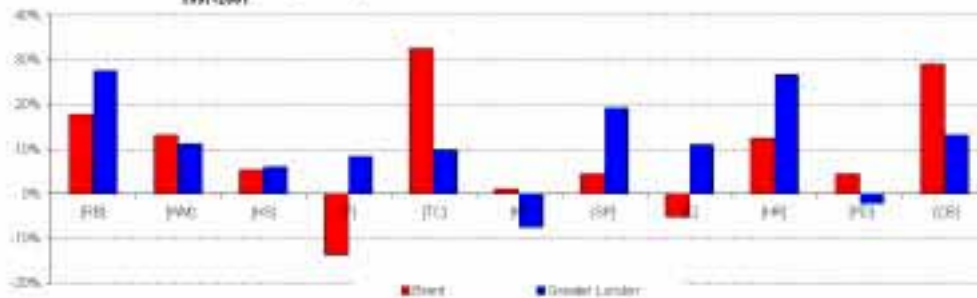
JOB DENSITY 2001 Data



EMPLOYMENT by INDUSTRY 2001 Data

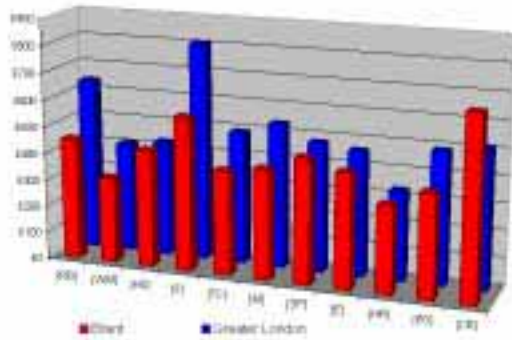


Growth Rates of Employment by Industry 1997-2001

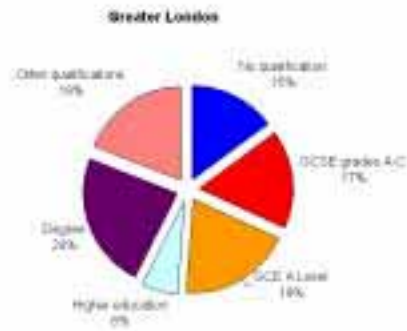
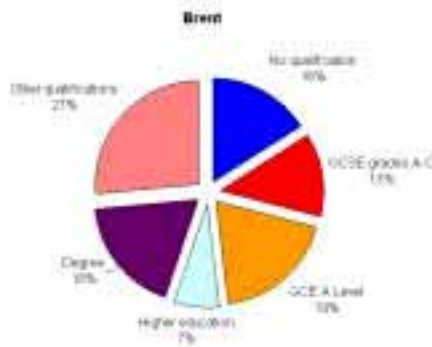


THE LONDON LABOUR MARKET
BRENT

AVERAGE WEEKLY EARNINGS by INDUSTRY 2001 Data



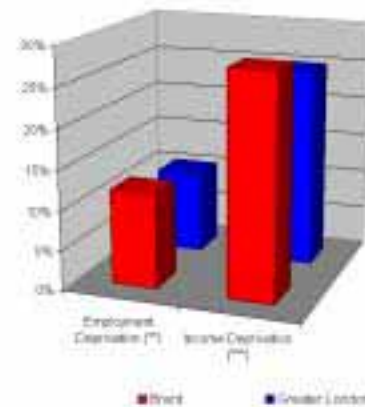
QUALIFICATIONS 2001 Data



SCHOOL PERFORMANCES 2002 Data

	Ranking position of the Borough (1)
-Average point score at KS2	17
-Average point score at KS3	19
-Percentage of pupils aged 15 who reached school leaving age with no GCSE or GNVQ passes	12
-Percentage of pupils aged 15 who gained five or more grades A-C in the GCSE or GNVQ	13

DEPRIVATION 2000 Data



(1) The Borough will be best performance is ranked in the top 1
 (2) The index is the ratio between the number of Employment Deprivation in the Borough and the Working Age Population
 (3) The index is the ratio between the number of Income Deprivation in the Borough and the Total Population

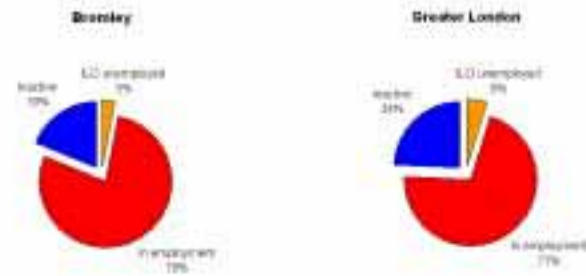
The London Labour Market

THE LONDON LABOUR MARKET BROMLEY

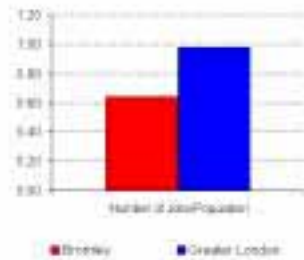
POPULATION by AGE 2001 Data



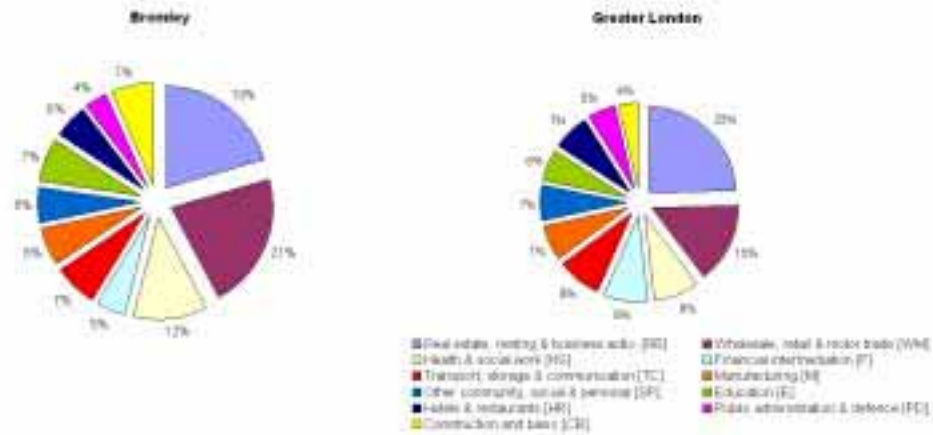
ACTIVITY 2001 Data



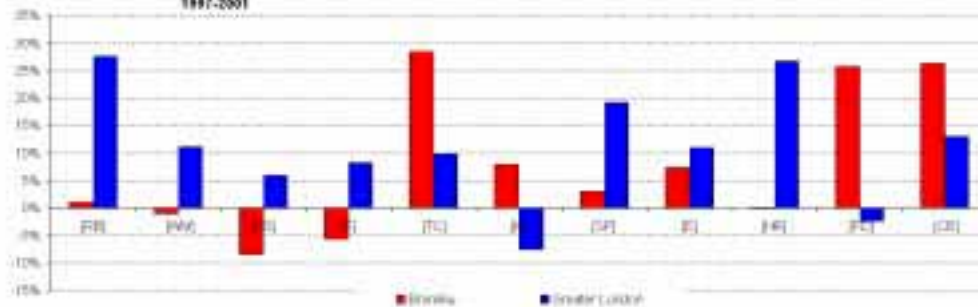
JOB DENSITY 2001 Data



EMPLOYMENT by INDUSTRY 2001 Data

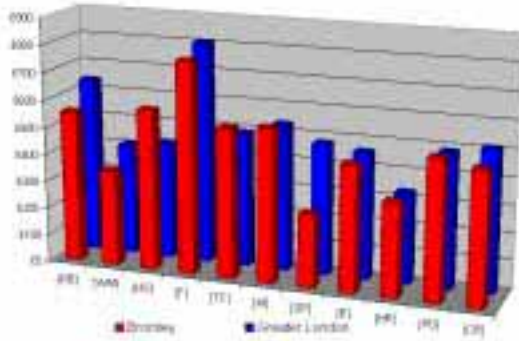


Growth Rates of Employment by Industry 1997-2001

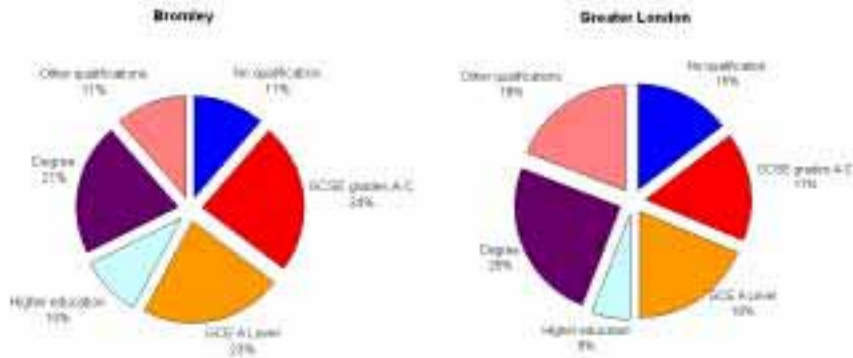


THE LONDON LABOUR MARKET
BROMLEY

AVERAGE WEEKLY EARNINGS by INDUSTRY 2001 Data



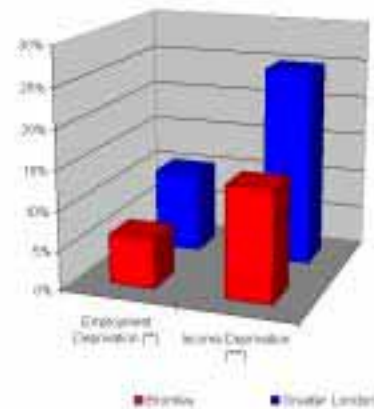
QUALIFICATIONS 2001 Data



SCHOOL PERFORMANCES 2002 Data

Metric	Ranking position of the Borough (*)
-Average point score at KS2	8
-Average point score at KS3	3
-Percentage of pupils aged 15 who reached school leaving age with no GCSE or GNVQ passes	10
-Percentage of pupils aged 15 who gained five or more grades A-C in the GCSE or GNVQ	4

DEPRIVATION 2000 Data



(*) The Borough with the best performance is ranked as the best.
 (**) The index is the ratio between the number of Employment Deprived in the Borough and the Working Age Population.
 (***) The index is the ratio between the number of Income Deprived in the Borough and the Total Population.

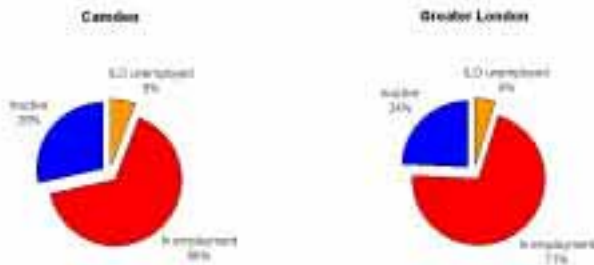
The London Labour Market

THE LONDON LABOUR MARKET CAMDEN

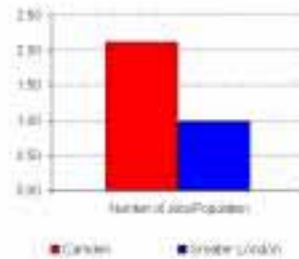
POPULATION by AGE 2001 Data



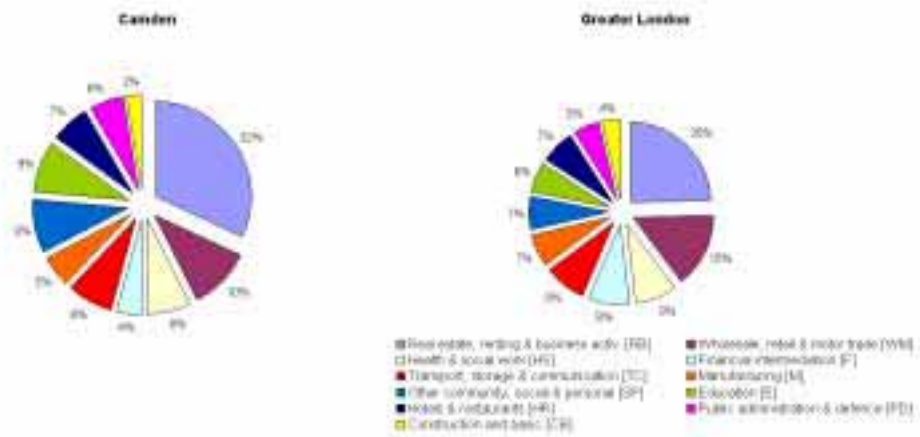
ACTIVITY 2001 Data



JOB DENSITY 2001 Data



EMPLOYMENT by INDUSTRY 2001 Data

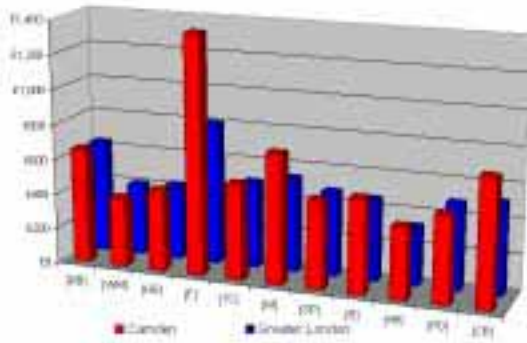


Growth Rates of Employment by Industry 1997-2001

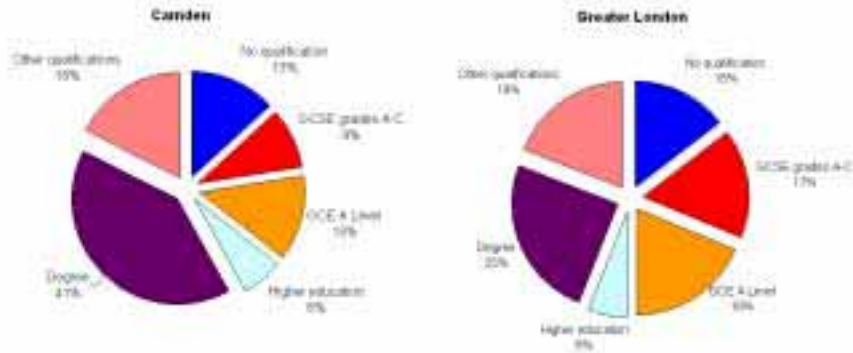


THE LONDON LABOUR MARKET
CAMDEN

AVERAGE WEEKLY EARNINGS by INDUSTRY 2001 Data



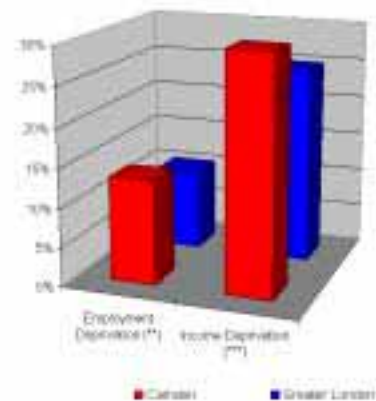
QUALIFICATIONS 2001 Data



SCHOOL PERFORMANCES 2002 Data

	Ranking position of the Borough (*)
-Average point score at KS2	21
-Average point score at KS3	12
-Percentage of pupils aged 15 who reached school leaving age with no GCSE or GNVQ passes	24
-Percentage of pupils aged 15 who gained five or more grades A-C in the GCSE or GNVQ	17

DEPRIVATION 2000 Data



(*) The Borough with the best performance is ranked as the 1.
 (*) The value at the left between the number of Employment Deprived in the Borough and the Working Age Population.
 (*) The value at the left between the number of Income Deprived in the Borough and the Total Population.

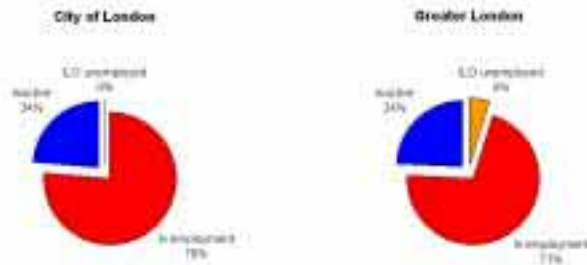
The London Labour Market

THE LONDON LABOUR MARKET CITY of LONDON

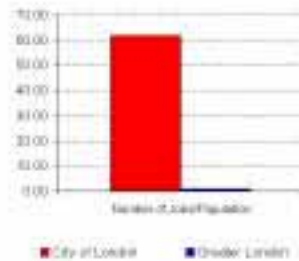
POPULATION by AGE 2001 Data



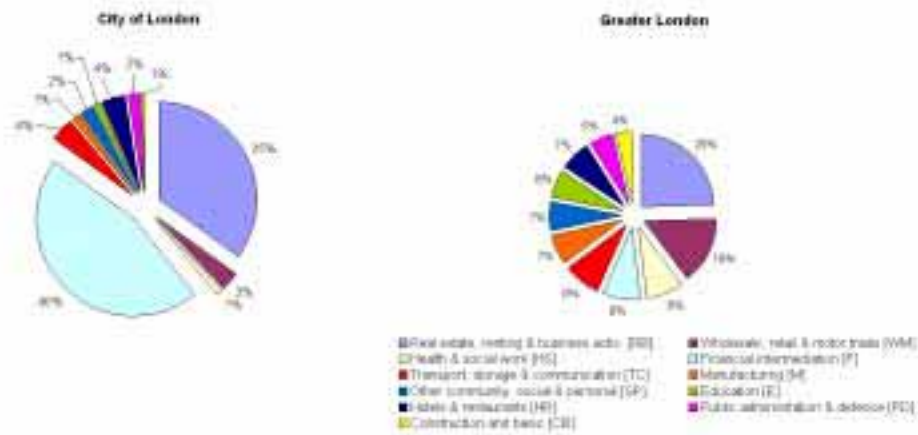
ACTIVITY 2001 Data



JOB DENSITY 2001 Data



EMPLOYMENT by INDUSTRY 2001 Data

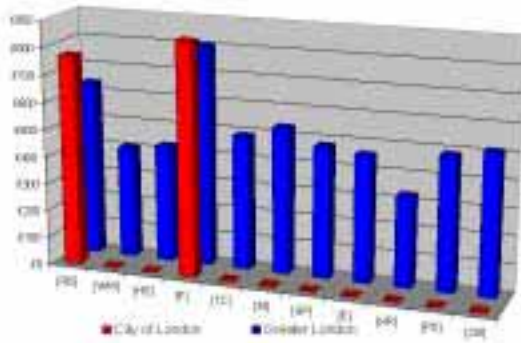


Growth Rates of Employment by Industry 1997-2001

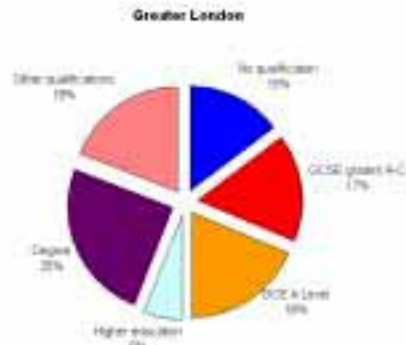


THE LONDON LABOUR MARKET
CITY of LONDON

AVERAGE WEEKLY EARNINGS by INDUSTRY 2001 Data



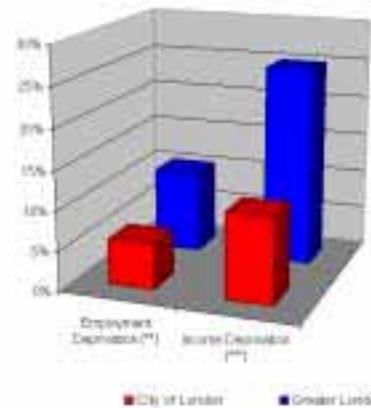
QUALIFICATIONS 2001 Data



SCHOOL PERFORMANCES 2002 Data

	Ranking position of the Borough (*)
-Average point score at KS2	1
-Average point score at KS3	11
-Percentage of pupils aged 15 who reached school leaving age with no GCSE or GNVQ passes	+
-Percentage of pupils aged 15 who gained five or more grades A-C in the GCSE or GNVQ	+

DEPRIVATION 2000 Data



(*) The Borough with the best performance is ranked on the top 1.
 (**) The table is the ratio between the number of Children/over 16 aged in the borough and the Working Age Population.
 (***) The table is the ratio between the number of Young Deprived in the borough and the Total Population.

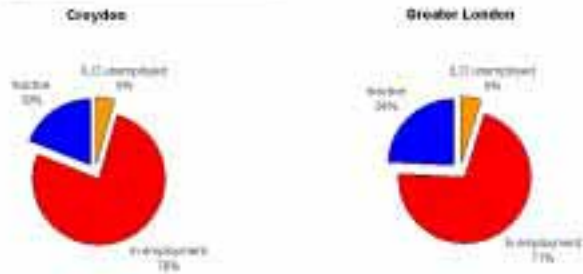
The London Labour Market

THE LONDON LABOUR MARKET CROYDON

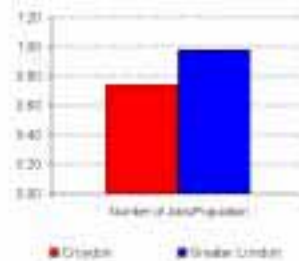
POPULATION by AGE 2001 Data



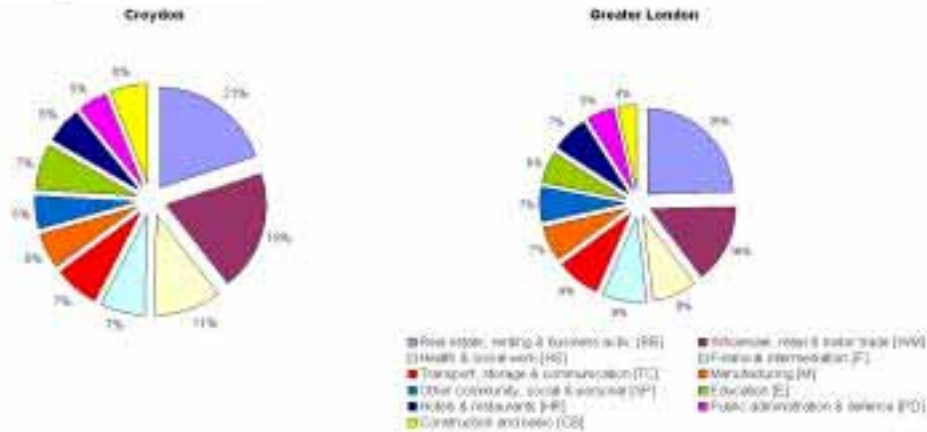
ACTIVITY 2001 Data



JOB DENSITY 2001 Data



EMPLOYMENT by INDUSTRY 2001 Data

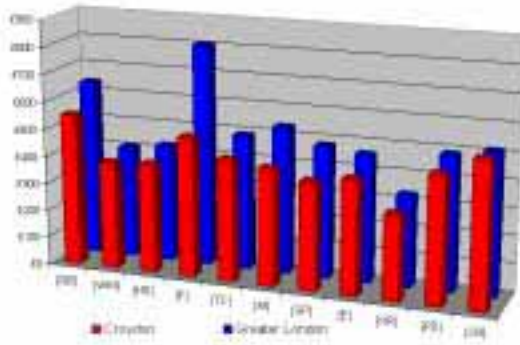


Growth Rates of Employment by Industry 1997-2001

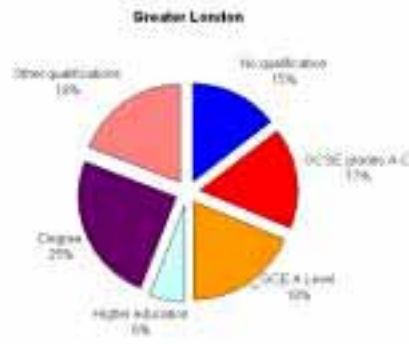
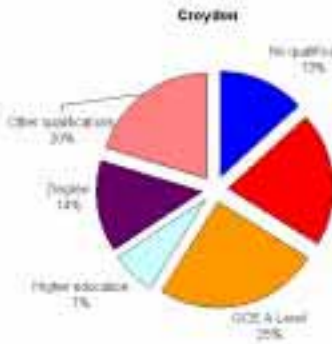


THE LONDON LABOUR MARKET
CROYDON

AVERAGE WEEKLY EARNINGS by INDUSTRY 2001 Data



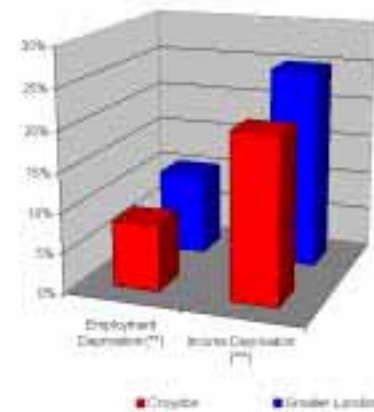
QUALIFICATIONS 2001 Data



SCHOOL PERFORMANCES 2002 Data

	Ranking position of the Borough (*)
-Average point score at KS2	18
-Average point score at KS3	15
-Percentage of pupils aged 15 who reached school leaving age with no GCSE or GNVQ passes	13
-Percentage of pupils aged 15 who gained five or more grades A-C in the GCSE or GNVQ	15

DEPRIVATION 2000 Data



(*) The Borough with the best performance is ranked as the best.
 (**) The value is the ratio between the number of Employment Deprived in the borough and the Working Age Population.
 (***) The value is the ratio between the number of Income Deprived in the borough and the Total Population.

THE LONDON LABOUR MARKET
EALING

POPULATION by AGE 2001 Data

Males

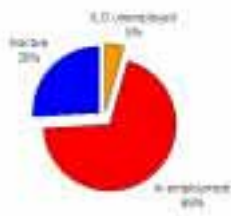


Females

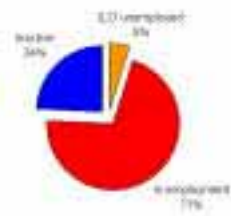


ACTIVITY 2001 Data

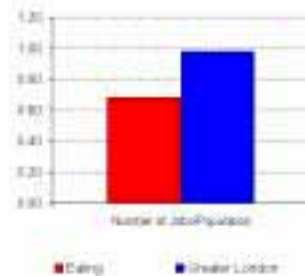
Ealing



Greater London

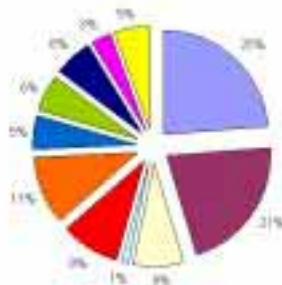


JOB DENSITY 2001 Data

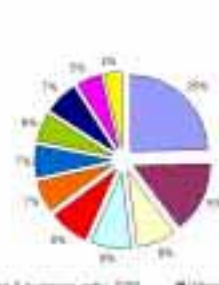


EMPLOYMENT by INDUSTRY 2001 Data

Ealing



Greater London



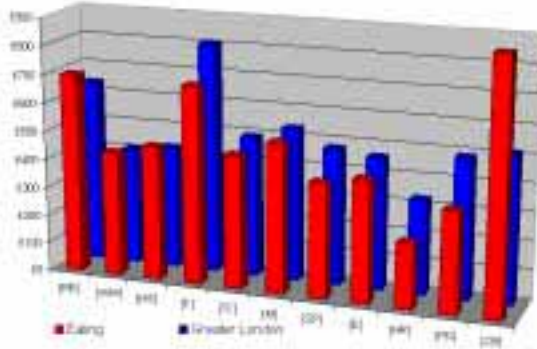
- Health & social work (HS)
- Manufacturing (M)
- Other community, social & personal (OS)
- Public administration & defence (PA)
- Education (E)
- Wholesale, retail & motor trade (WR)
- Financial intermediation (FI)
- Transport, storage & communication (TS)
- Construction and basic (CB)
- Information & communication (IC)
- Other (O)

Growth Rates of Employment by Industry 1997-2001

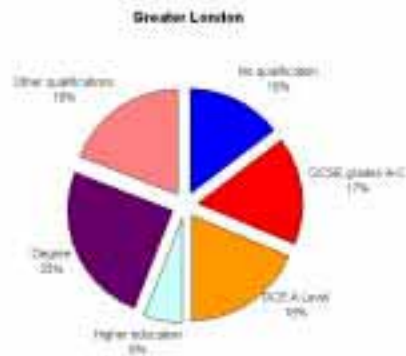
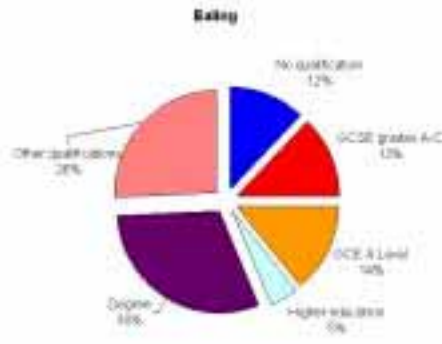


THE LONDON LABOUR MARKET
EALING

AVERAGE WEEKLY EARNINGS by INDUSTRY 2001 Data



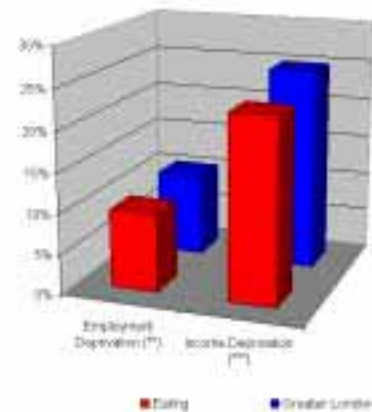
QUALIFICATIONS 2001 Data



SCHOOL PERFORMANCES 2002 Data

	Ranking position of the Borough (*)
-Average point score at KS2	14
-Average point score at KS3	22
-Percentage of pupils aged 15 who reached school leaving age with no GCSE or GNVQ passes	2
-Percentage of pupils aged 15 who gained five or more grades A-C in the GCSE or GNVQ	12

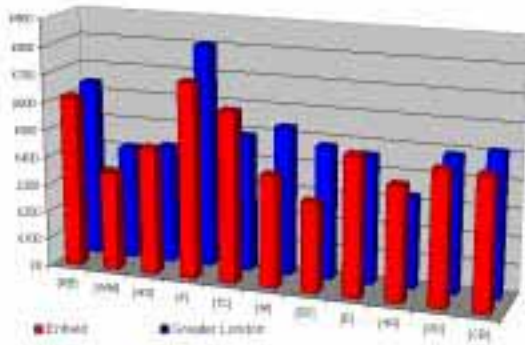
DEPRIVATION 2000 Data



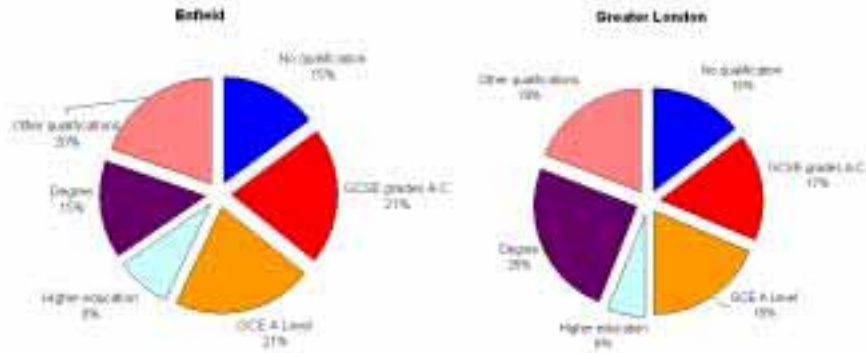
(*) The Borough with the best performance is ranked as the top 1.
 (**) The index is the ratio between the number of Children Deprived in the Borough and the Working Age Population.
 (***) The index is the ratio between the number of Income Deprived in the Borough and the Total Population.

THE LONDON LABOUR MARKET
ENFIELD

AVERAGE WEEKLY EARNINGS by INDUSTRY 2001 Data



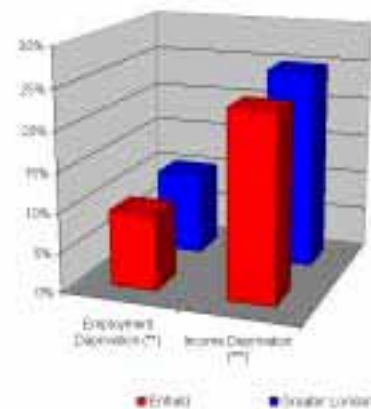
QUALIFICATIONS 2001 Data



SCHOOL PERFORMANCES 2002 Data

Metric	Ranking position of the Borough (**)
-Average point score at KS2	15
-Average point score at KS3	17
-Percentage of pupils aged 15 who reached school leaving age with no GCSE or GNVQ passes	14
-Percentage of pupils aged 15 who gained five or more grades A-C in the GCSE or GNVQ	18

DEPRIVATION 2000 Data

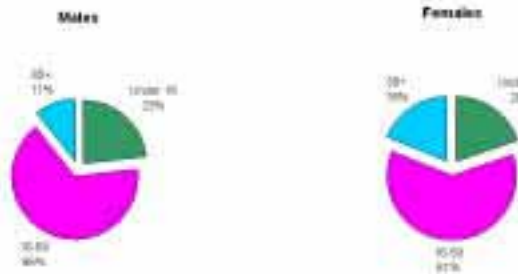


(*) The Borough with the best performance is ranked as the top 1
 (**) The value is the ratio between the number of Deprivation Deprived in the Borough and the Working Age Population
 (***) The value is the ratio between the number of Income Deprived in the Borough and the Total Population

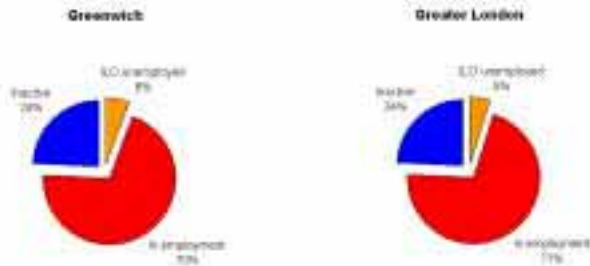
The London Labour Market

THE LONDON LABOUR MARKET GREENWICH

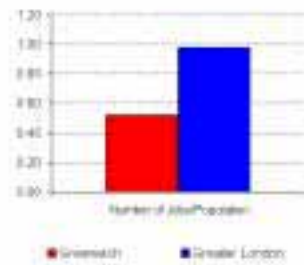
POPULATION by AGE 2001 Data



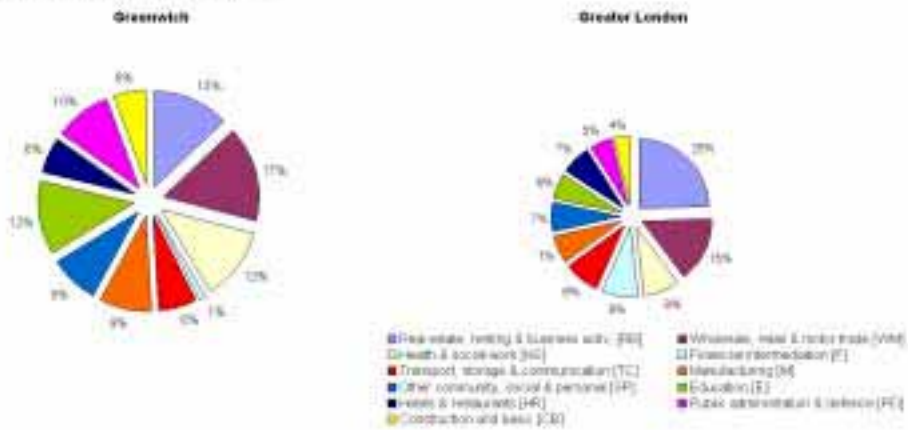
ACTIVITY 2001 Data



JOB DENSITY 2001 Data



EMPLOYMENT by INDUSTRY 2001 Data

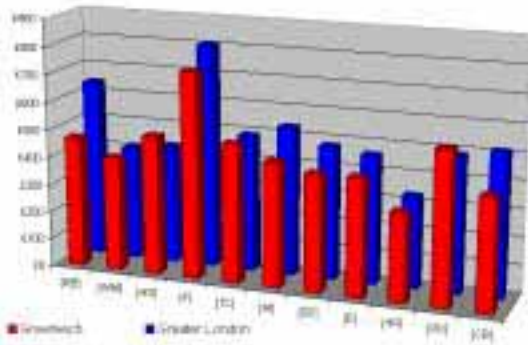


Growth Rates of Employment by Industry 1997-2001

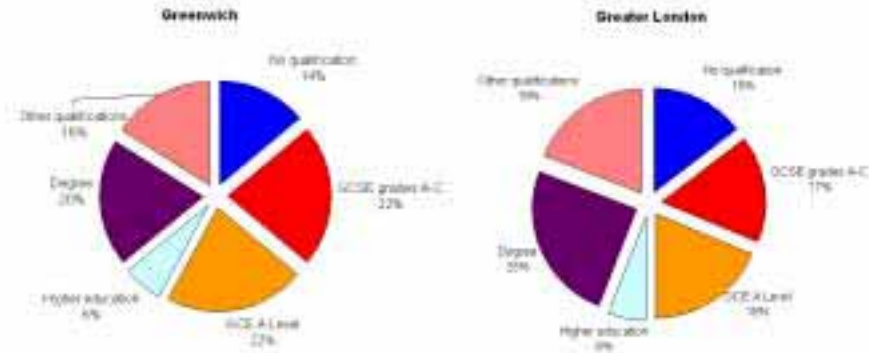


THE LONDON LABOUR MARKET
GREENWICH

AVERAGE WEEKLY EARNINGS by INDUSTRY 2001 Data



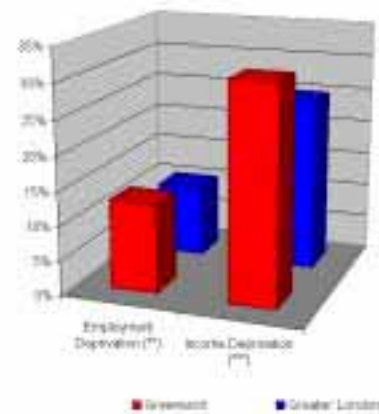
QUALIFICATIONS 2001 Data



SCHOOL PERFORMANCES 2002 Data

	Ranking position of the Borough (*)
-Average point score at KS2	27
-Average point score at KS3	28
-Percentage of pupils aged 15 who reached school leaving age with no GCSE or GNVQ passes	26
-Percentage of pupils aged 15 who gained five or more grades A-C in the GCSE or GNVQ	30

DEPRIVATION 2000 Data

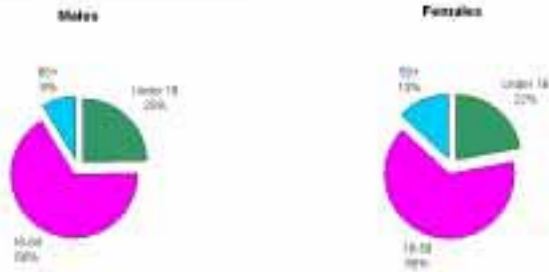


(*) The Borough with the best performance is ranked as the 1.
 (**) The ratio is the ratio between the number of Employment Deprived in the Borough and the missing Age Population.
 (***) The ratio is the ratio between the number of Income Deprived in the Borough and the total population.

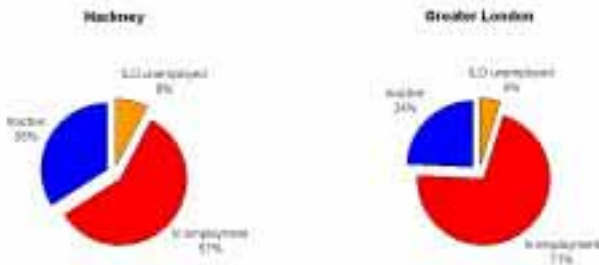
The London Labour Market

THE LONDON LABOUR MARKET HACKNEY

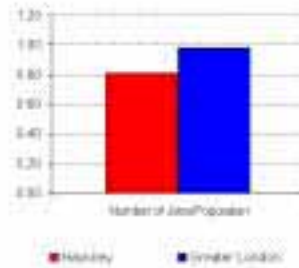
POPULATION by AGE 2001 Data



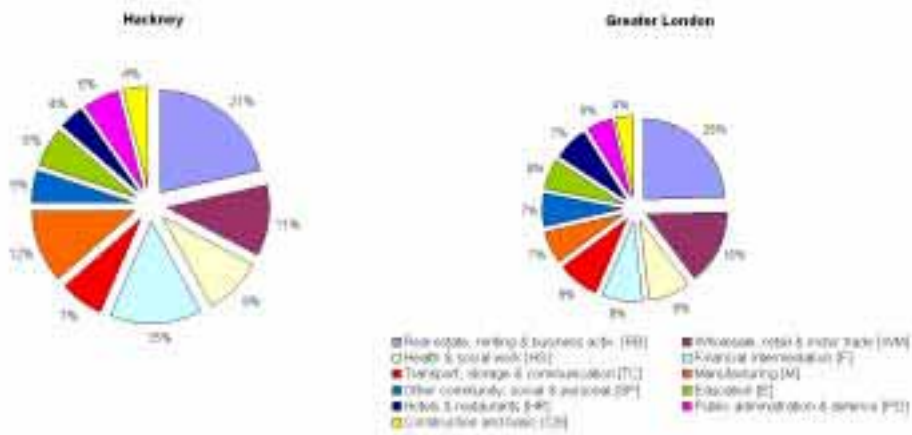
ACTIVITY 2001 Data



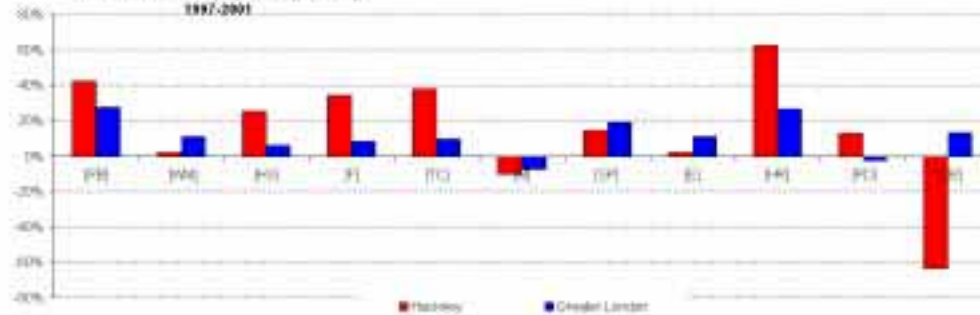
JOB DENSITY 2001 Data



EMPLOYMENT by INDUSTRY 2001 Data

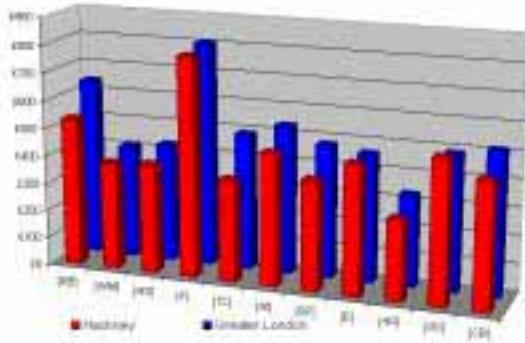


Growth Rates of Employment by Industry 1997-2001

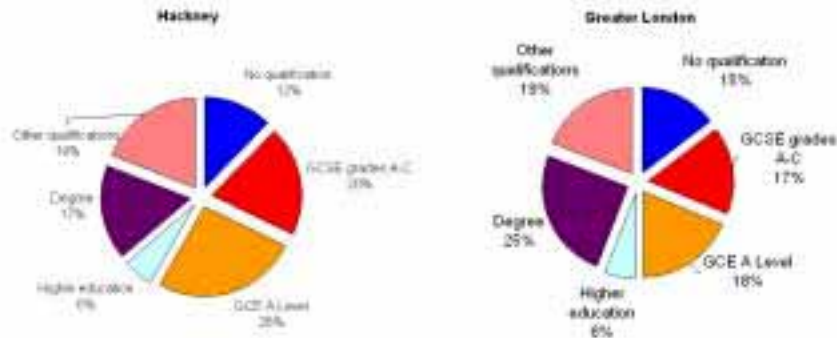


THE LONDON LABOUR MARKET
HACKNEY

AVERAGE WEEKLY EARNINGS by INDUSTRY 2001 Data



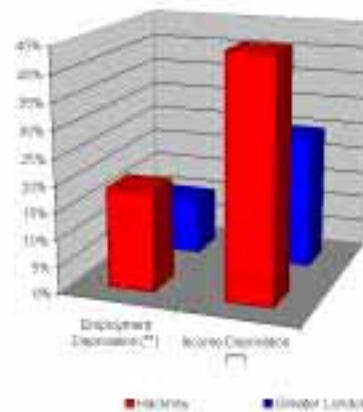
QUALIFICATIONS 2001 Data



SCHOOL PERFORMANCES 2002 Data

	Ranking position of the Borough (*)
-Average point score at KS2	32
-Average point score at KS3	33
-Percentage of pupils aged 15 who reached school leaving age with no GCSE or GNVQ passes	30
-Percentage of pupils aged 15 who gained five or more grades A-C in the GCSE or GNVQ	32

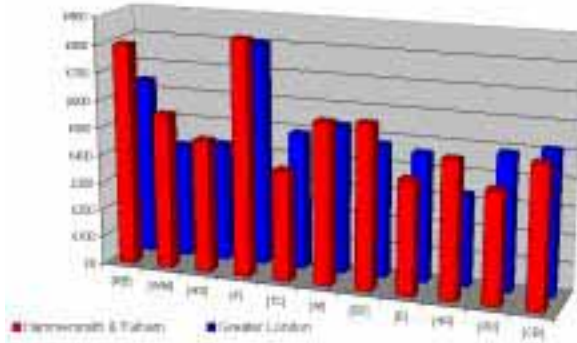
DEPRIVATION 2000 Data



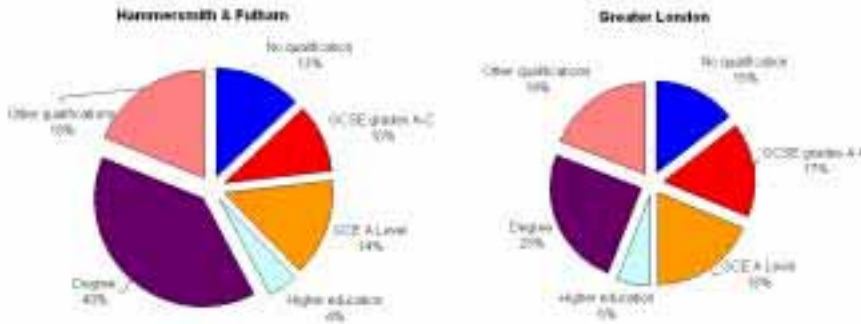
(*) The Borough with the best performance is ranked as the top 1.
 (**) The ratio is the ratio between the number of Employment Deprived in the Borough and the Working Age Population.
 (***) The ratio is the ratio between the number of Income Deprived in the Borough and the Total Population.

**THE LONDON LABOUR MARKET
HAMMERSMITH & FULHAM**

AVERAGE WEEKLY EARNINGS by INDUSTRY 2001 Data



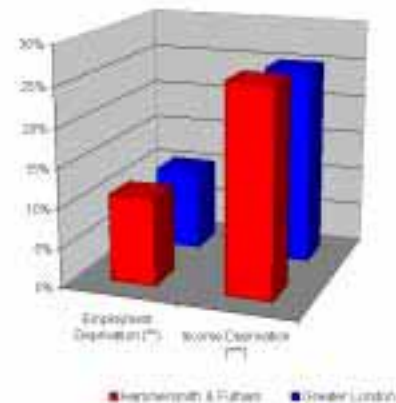
QUALIFICATIONS 2001 Data



SCHOOL PERFORMANCES 2002 Data

	Ranking position of the Borough (*)
-Average point score at KS2	13
-Average point score at KS3	16
-Percentage of pupils aged 15 who reached school leaving age with no GCSE or GNVQ passes	6
-Percentage of pupils aged 15 who gained five or more grades A-C in the GCSE or GNVQ	11

DEPRIVATION 2000 Data

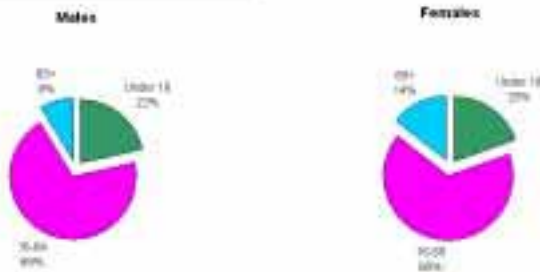


(*) The Borough with the best performance is ranked as the top 1.
 (**) The ratio is the ratio between the number of Employment Deprived in the borough and the Working Age Population.
 (***) The ratio is the ratio between the number of Income Deprived in the borough and the Total Population.

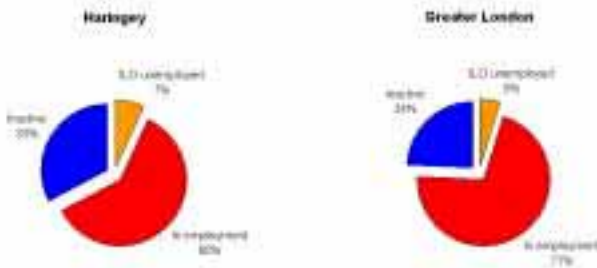
The London Labour Market

THE LONDON LABOUR MARKET HARINGEY

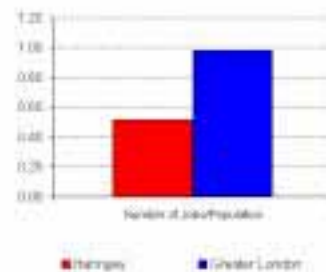
POPULATION by AGE 2001 Data



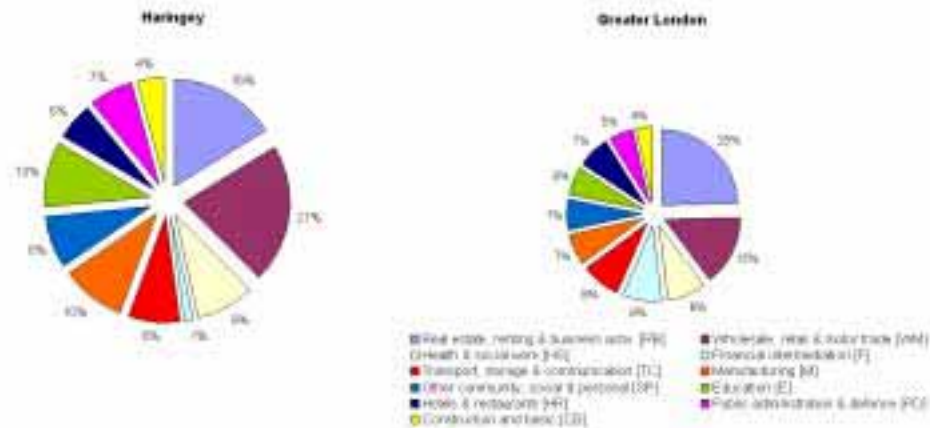
ACTIVITY 2001 Data



JOB DENSITY 2001 Data



EMPLOYMENT by INDUSTRY 2001 Data

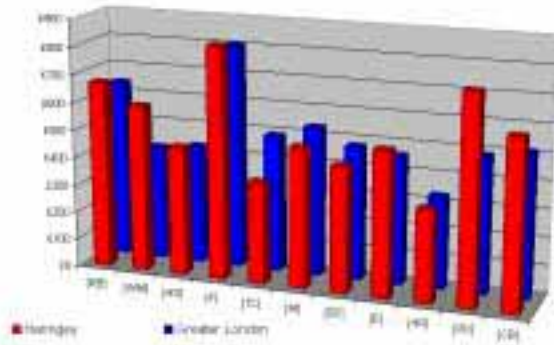


Growth Rates of Employment by Industry 1997-2001

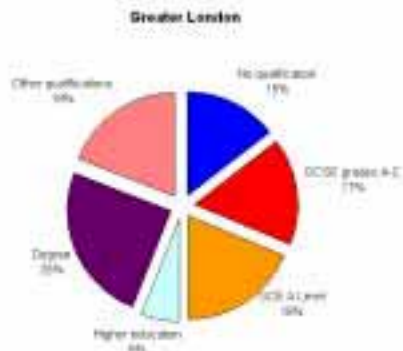
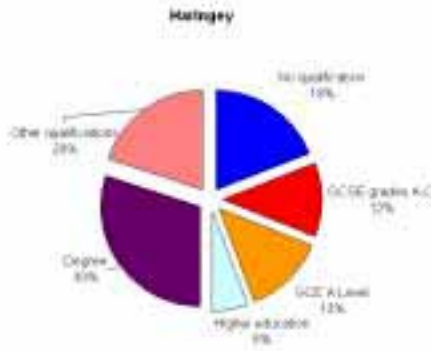


THE LONDON LABOUR MARKET
HARINGEY

AVERAGE WEEKLY EARNINGS by INDUSTRY 2001 Data



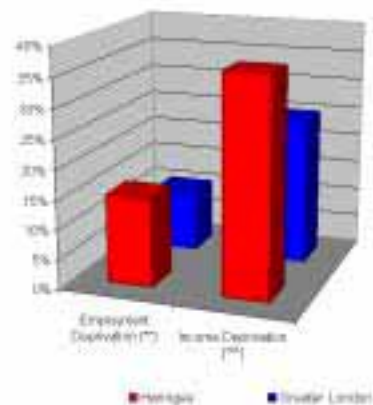
QUALIFICATIONS 2001 Data



SCHOOL PERFORMANCES 2002 Data

	Ranking position of the Borough (*)
-Average point score at KS2	29
-Average point score at KS3	29
-Percentage of pupils aged 15 who reached school leaving age with no GCSE or GNVQ passes	28
-Percentage of pupils aged 15 who gained five or more grades A-C in the GCSE or GNVQ	29

DEPRIVATION 2000 Data



(*) The Borough with the best performance is ranked as the best.
 (**) The index is the ratio between the number of Employment Deprived in the borough and the Working Age Population.
 (***) The index is the ratio between the number of Income Deprived in the borough and the Total Population.

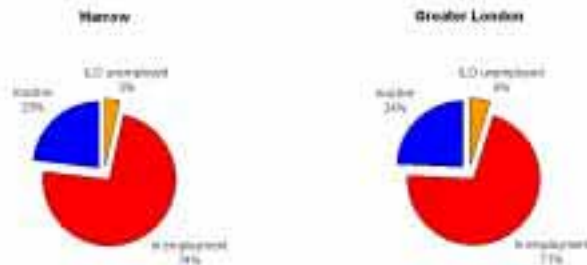
The London Labour Market

THE LONDON LABOUR MARKET HARROW

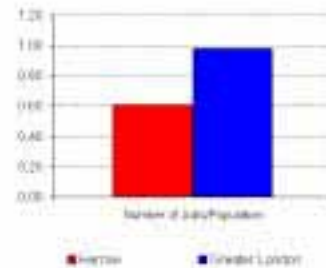
POPULATION by AGE 2001 Data



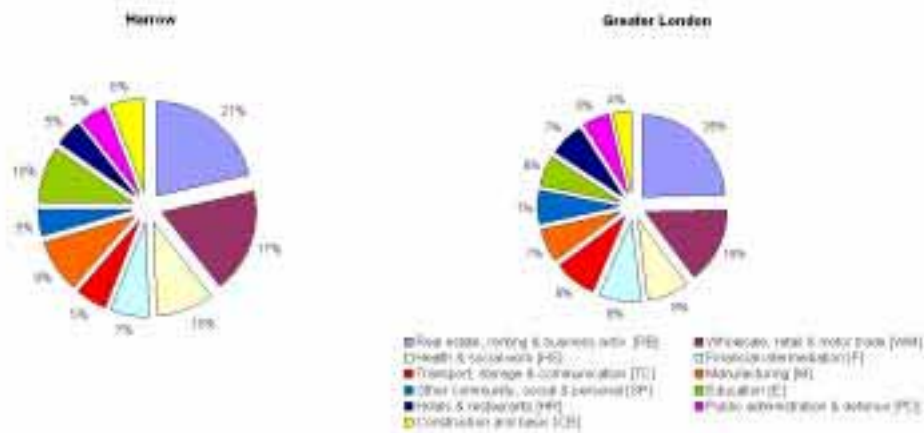
ACTIVITY 2001 Data



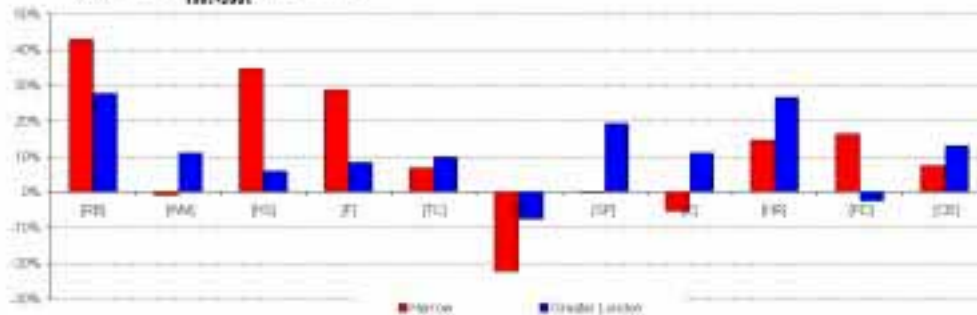
JOB DENSITY 2001 Data



EMPLOYMENT by INDUSTRY 2001 Data

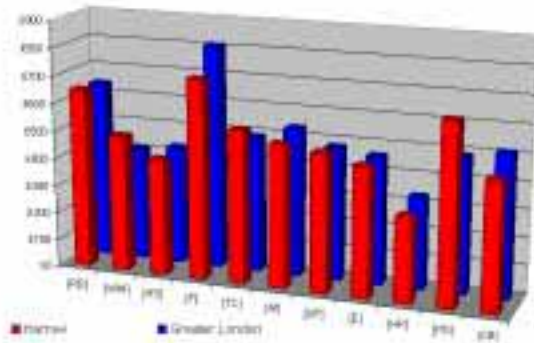


Growth Rates of Employment by Industry 1997-2001

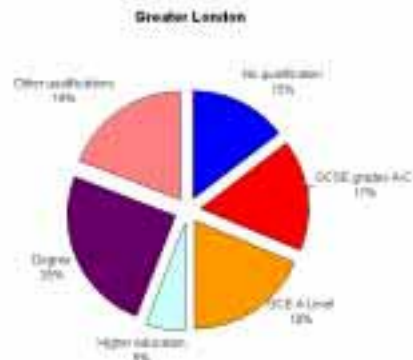
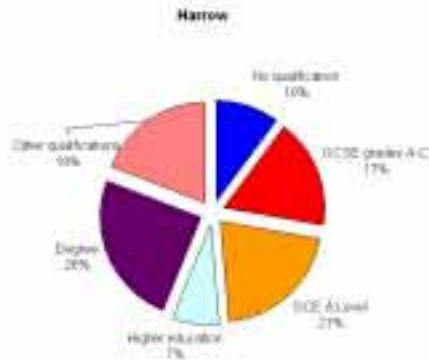


THE LONDON LABOUR MARKET
HARROW

AVERAGE WEEKLY EARNINGS by INDUSTRY 2001 Data



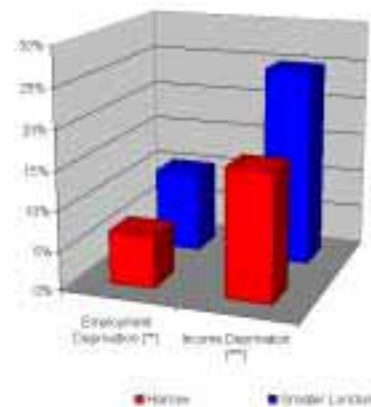
QUALIFICATIONS 2001 Data



SCHOOL PERFORMANCES 2002 Data

	Ranking position of the Borough (*)
-Average point score at KS2	6
-Average point score at KS3	8
-Percentage of pupils aged 15 who reached school leaving age with no GCSE or GNVQ passes	5
-Percentage of pupils aged 15 who gained five or more grades A-C in the GCSE or GNVQ	6

DEPRIVATION 2000 Data



(*) The Borough with the best performance is ranked as the No. 1
 (**) The ratio is the ratio between the number of Deprivation Deprived in the Borough and the Working Age Population
 (***) The ratio is the ratio between the number of Income Deprived in the Borough and the Total Population

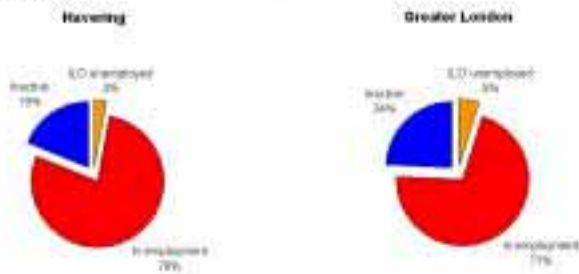
The London Labour Market

THE LONDON LABOUR MARKET HAVERING

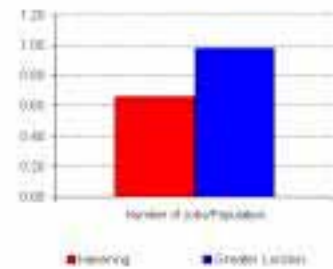
POPULATION by AGE 2001 Data



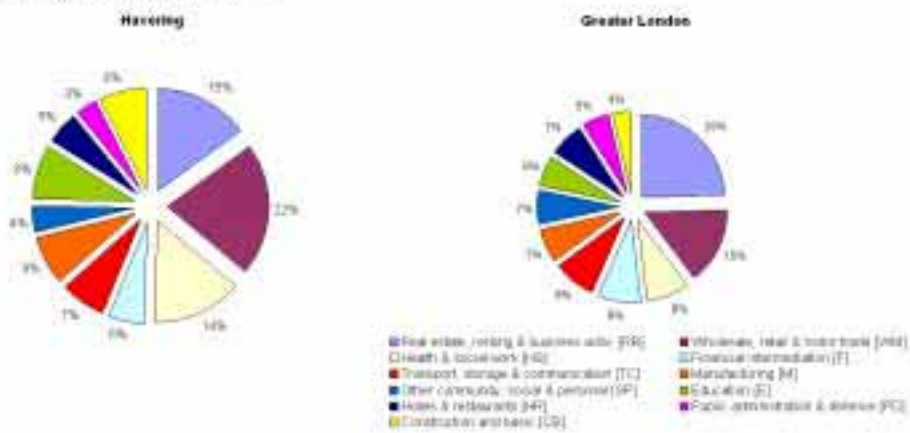
ACTIVITY 2001 Data



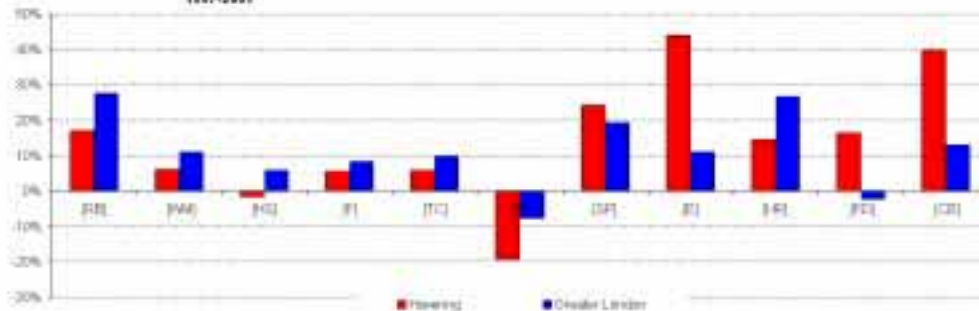
JOB DENSITY 2001 Data



EMPLOYMENT by INDUSTRY 2001 Data

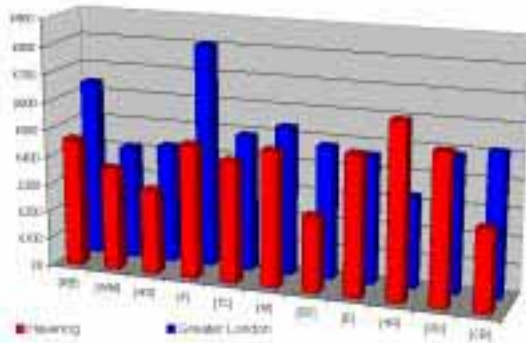


Growth Rates of Employment by Industry 1987-2001

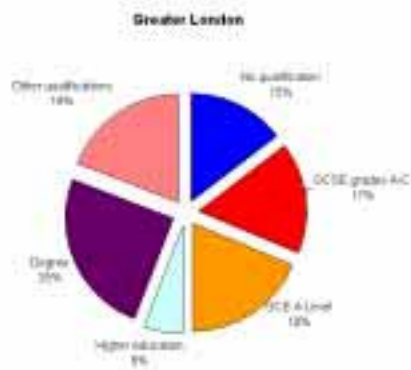
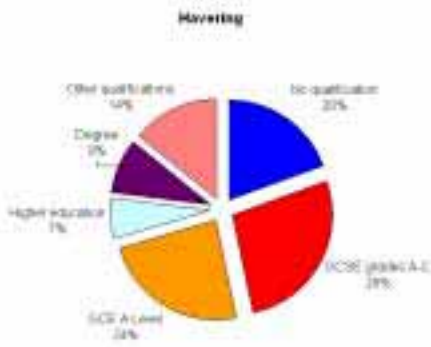


THE LONDON LABOUR MARKET
HAVERING

AVERAGE WEEKLY EARNINGS by INDUSTRY 2001 Data



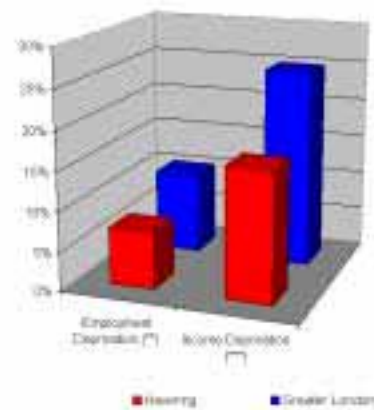
QUALIFICATIONS 2001 Data



SCHOOL PERFORMANCES 2002 Data

	Ranking position of the Borough (*)
-Average point score at KS2	9
-Average point score at KS3	6
-Percentage of pupils aged 15 who reached school leaving age with no GCSE or GNVQ passes	11
-Percentage of pupils aged 15 who gained five or more grades A-C in the GCSE or GNVQ	7

DEPRIVATION 2000 Data



(*) The Borough with the best performance is ranked as the best.
 (**) The table is the ratio between the number of Unemployed (aged 16 and the Working Age Population).
 (***) The table is the ratio between the number of Lower Deprivation in the Borough and the Total Population.

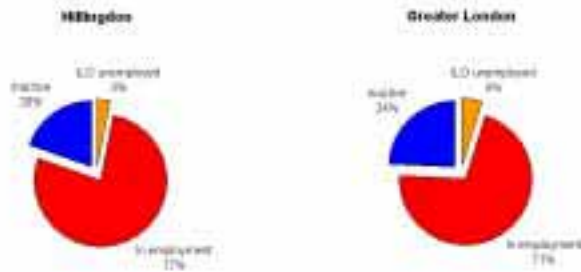
The London Labour Market

THE LONDON LABOUR MARKET HILLINGDON

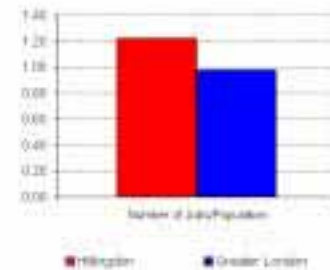
POPULATION by AGE 2001 Data



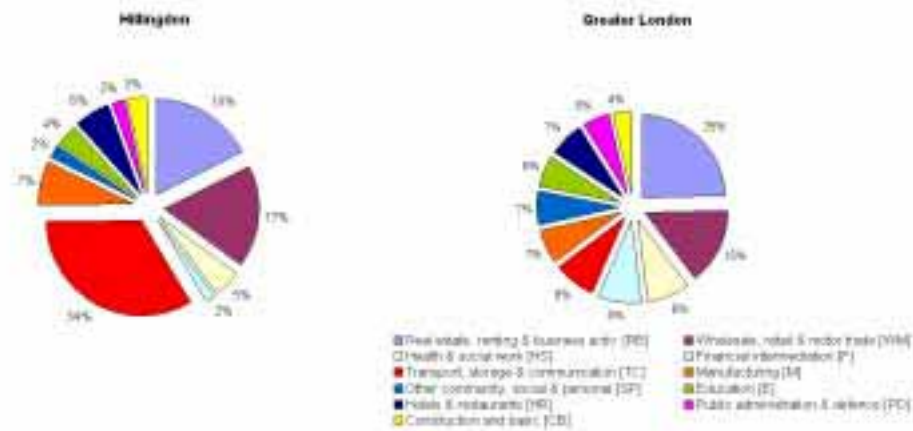
ACTIVITY 2001 Data



JOB DENSITY 2001 Data



EMPLOYMENT by INDUSTRY 2001 Data

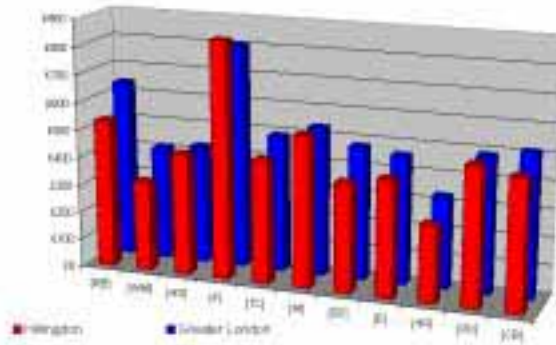


Growth Rates of Employment by Industry 1997-2001

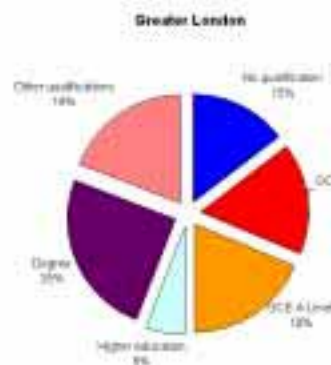
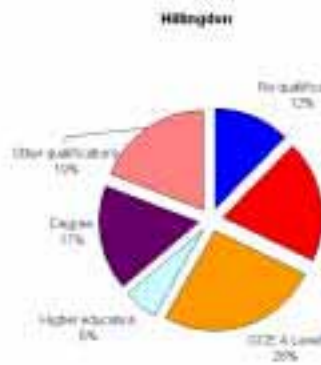


THE LONDON LABOUR MARKET
HILLINGDON

AVERAGE WEEKLY EARNINGS by INDUSTRY 2001 Data



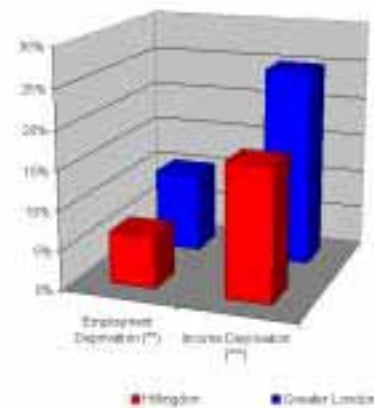
QUALIFICATIONS 2001 Data



SCHOOL PERFORMANCES 2002 Data

	Ranking position of the Borough (*)
-Average point score at KS2	10
-Average point score at KS3	13
-Percentage of pupils aged 15 who reached school leaving age with no GCSE or GNVQ passes	22
-Percentage of pupils aged 15 who gained five or more grades A-C in the GCSE or GNVQ	19

DEPRIVATION 2000 Data



(*) The Borough with the best performance is ranked as the top 1.
 (**) The index is the ratio between the number of Employment Deprived in the Borough and the Working Age Population.
 (***) The index is the ratio between the number of Income Deprived in the Borough and the Total Population.

THE LONDON LABOUR MARKET
HOUNSLOW

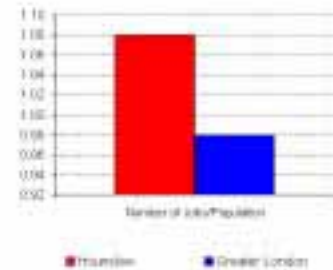
POPULATION by AGE 2001 Data



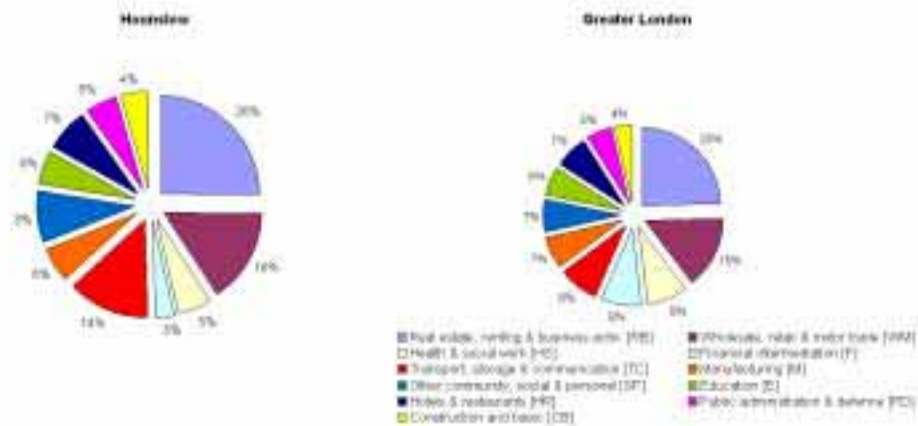
ACTIVITY 2001 Data



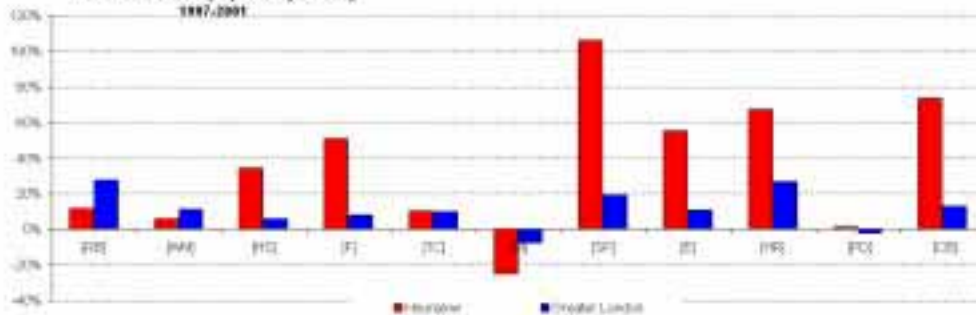
JOB DENSITY 2001 Data



EMPLOYMENT by INDUSTRY 2001 Data

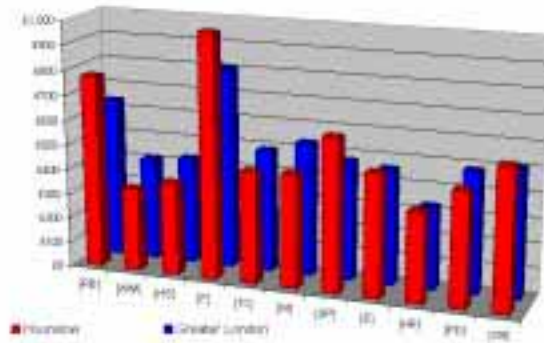


Growth Rates of Employment by Industry 1997-2001

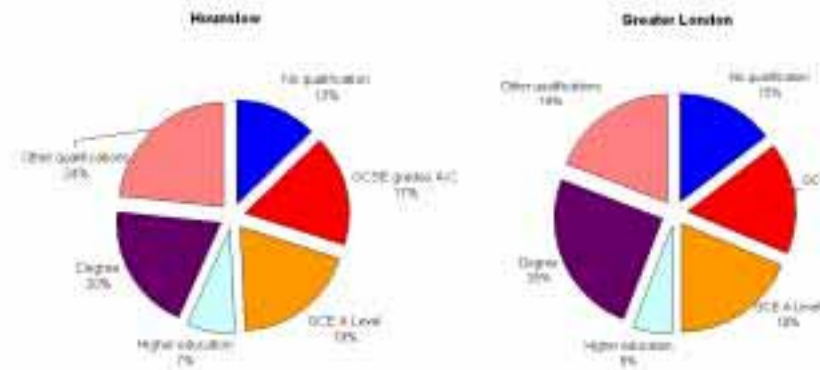


THE LONDON LABOUR MARKET
HOUNSLOW

AVERAGE WEEKLY EARNINGS by INDUSTRY 2001 Data



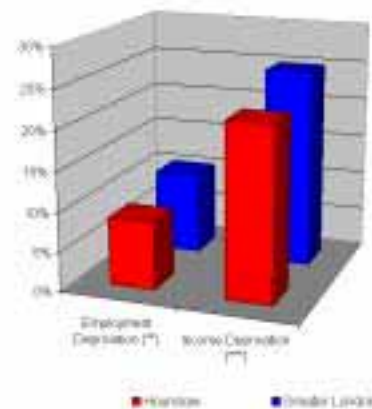
QUALIFICATIONS 2001 Data



SCHOOL PERFORMANCES 2002 Data

	Ranking position of the Borough (*)
-Average point score at KS2	19
-Average point score at KS3	18
-Percentage of pupils aged 15 who reached school leaving age with no GCSE or GNVQ passes	18
-Percentage of pupils aged 15 who gained five or more grades A-C in the GCSE or GNVQ	14

DEPRIVATION 2000 Data

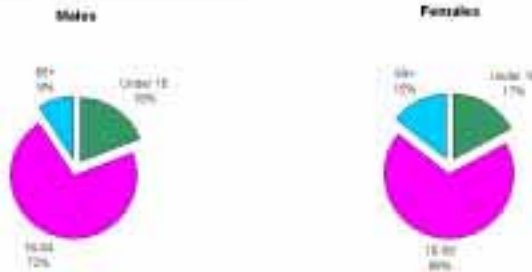


(*) The Borough with the best performance is ranked as the top 1
 (**) The ratio is the ratio between the number of Deprived and the Working Age Population
 (***) The ratio is the ratio between the number of Deprived in the Borough and the Total Population

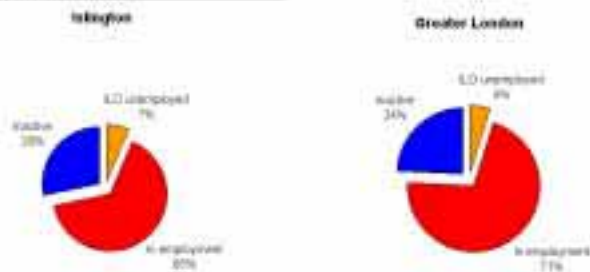
The London Labour Market

THE LONDON LABOUR MARKET ISLINGTON

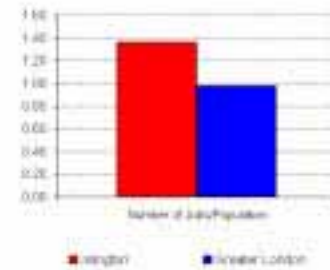
POPULATION by AGE 2001 Data



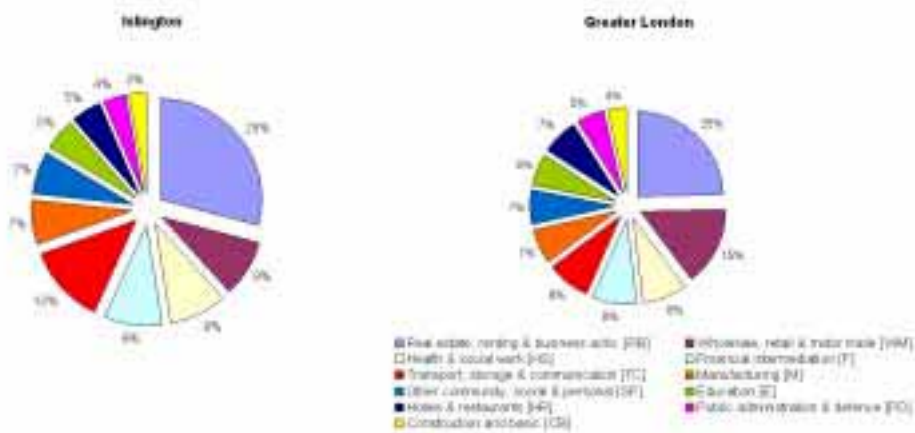
ACTIVITY 2001 Data



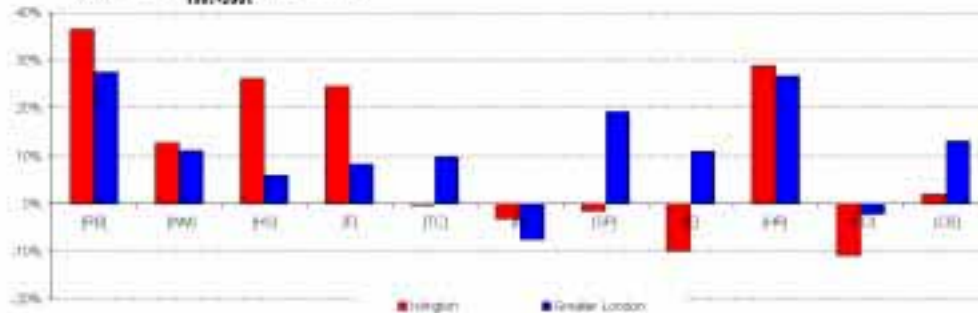
JOB DENSITY 2001 Data



EMPLOYMENT by INDUSTRY 2001 Data

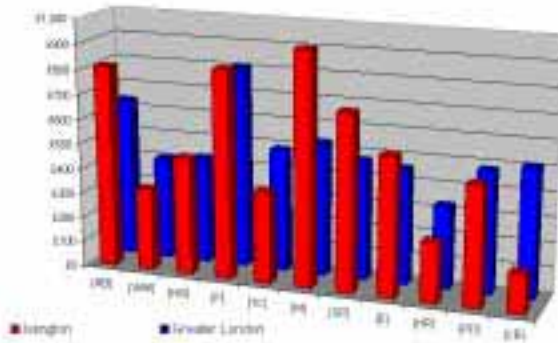


Growth Rates of Employment by Industry 1997-2001

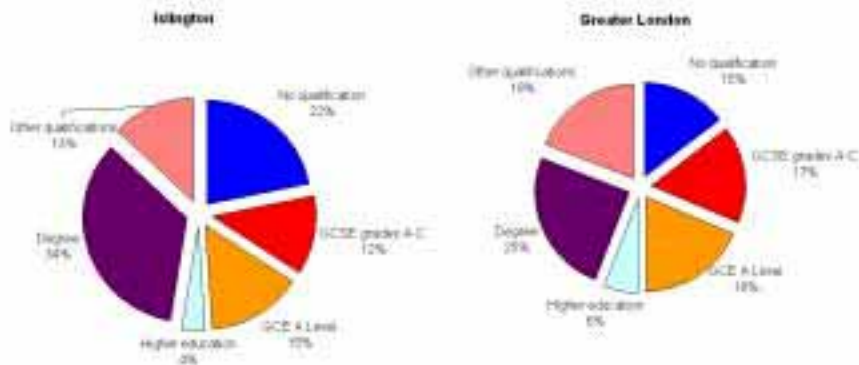


THE LONDON LABOUR MARKET
ISLINGTON

AVERAGE WEEKLY EARNINGS by INDUSTRY 2001 Data



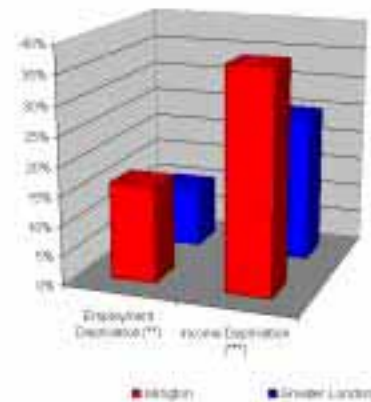
QUALIFICATIONS 2001 Data



SCHOOL PERFORMANCES 2002 Data

	Ranking position of the Borough (*)
-Average point score at KS2	25
-Average point score at KS3	30
-Percentage of pupils aged 15 who reached school leaving age with no GCSE or GNVQ passes	32
-Percentage of pupils aged 15 who gained five or more grades A-C in the GCSE or GNVQ	31

DEPRIVATION 2000 Data



(*) The Borough with the best performance is ranked as the top 1.
 (**) The ratio is the ratio between the number of Employment Deprived in the borough and the Working Age Population.
 (***) The ratio is the ratio between the number of Income Deprived in the borough and the Total Population.

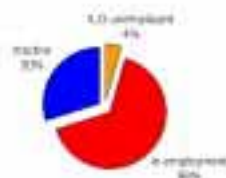
THE LONDON LABOUR MARKET
KENSINGTON & CHELSEA

POPULATION by AGE 2001 Data

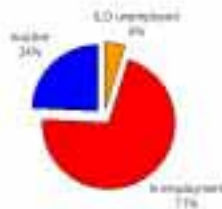


ACTIVITY 2001 Data

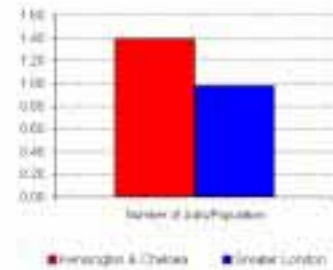
Kensington & Chelsea



Greater London

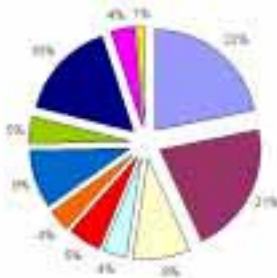


JOB DENSITY 2001 Data

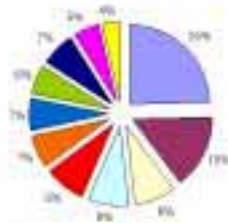


EMPLOYMENT by INDUSTRY 2001 Data

Kensington & Chelsea

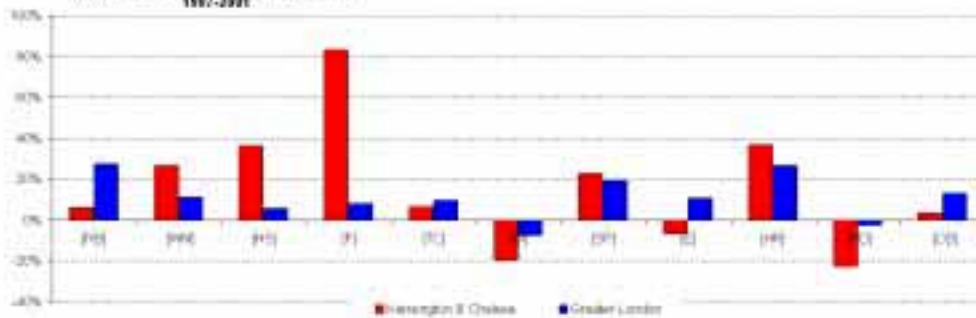


Greater London



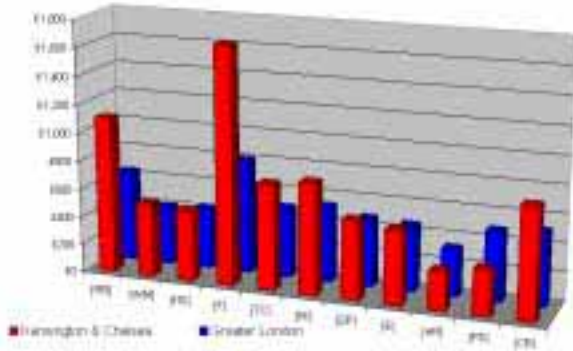
- Retail, trade & business activ (RT)
- Health & social work (HS)
- Transport, storage & communication (TSC)
- Other community, social & personal (OSP)
- Hotels & restaurants (HR)
- Construction and repair (CR)
- Wholesale, retail & repair trade (WRR)
- Finance & insurance (FI)
- Manufacturing (M)
- Education (E)
- Public administration & defence (PAD)

Growth Rates of Employment by Industry 1997-2001



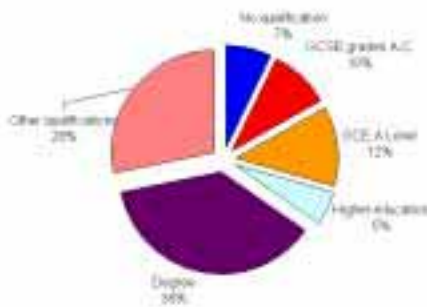
THE LONDON LABOUR MARKET
KENSINGTON & CHELSEA

AVERAGE WEEKLY EARNINGS by INDUSTRY 2001 Data

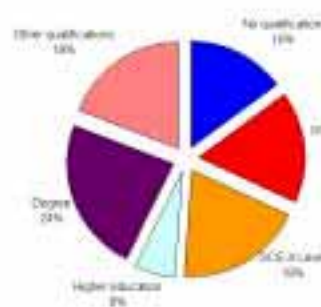


QUALIFICATIONS 2001 Data

Kensington & Chelsea



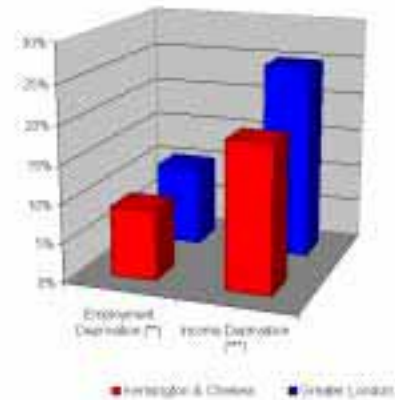
Greater London



SCHOOL PERFORMANCES 2002 Data

	Ranking position of the Borough (*)
-Average point score at KS2	3
-Average point score at KS3	9
-Percentage of pupils aged 15 who reached school leaving age with no GCSE or GNVQ passes	19
-Percentage of pupils aged 15 who gained five or more grades A-C in the GCSE or GNVQ	8

DEPRIVATION 2000 Data



*) The Borough with the best performance is ranked as the top 1
 *) The ratio is the ratio between the number of pupils aged 15 in the borough, and the Working Age Population
 *) The ratio is the ratio between the number of houses Deprived in the borough and the Total Population

The London Labour Market

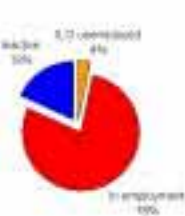
THE LONDON LABOUR MARKET KINGSTON-UPON-THAMES

POPULATION by AGE 2001 Data

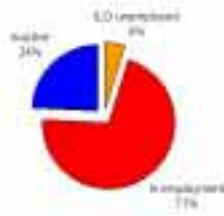


ACTIVITY 2001 Data

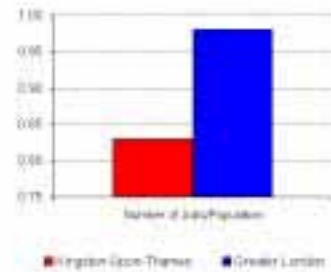
Kingston-Upon-Thames



Greater London

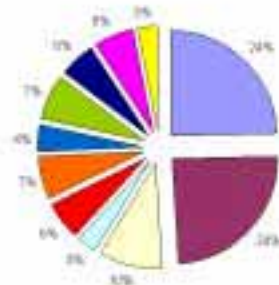


JOB DENSITY 2001 Data

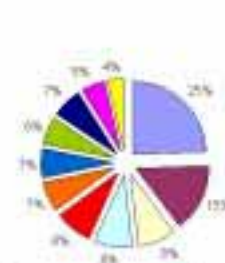


EMPLOYMENT by INDUSTRY 2001 Data

Kingston-Upon-Thames

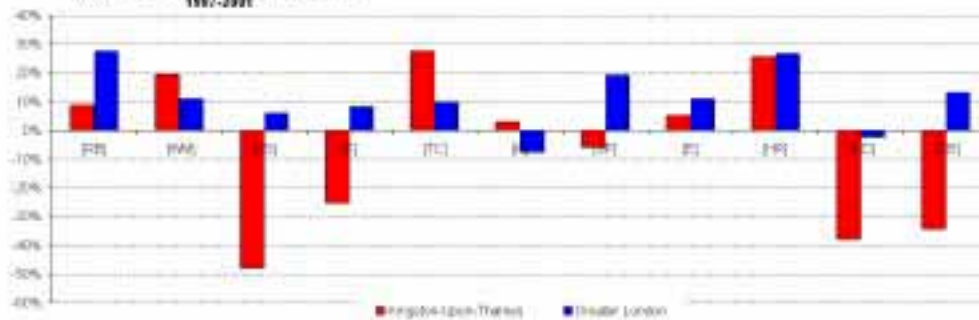


Greater London



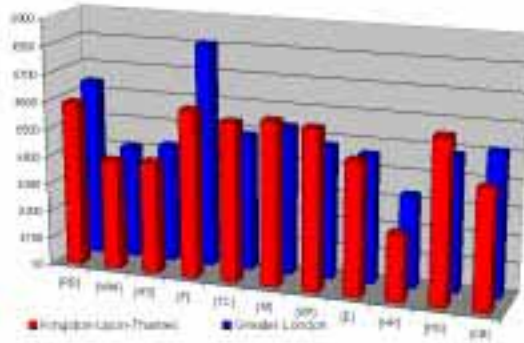
- Real estate, renting & business activities (RE)
- Health & social work (HS)
- Treatment, transport & communication (TC)
- Other community, social & personal (CP)
- Hotels & restaurants (HR)
- Construction and basic (CB)
- Wholesale, retail & repair trade (WR)
- Financial & insurance (FI)
- Manufacturing (M)
- Education (E)
- Public administration & defence (PD)

Growth Rates of Employment by Industry 1997-2001



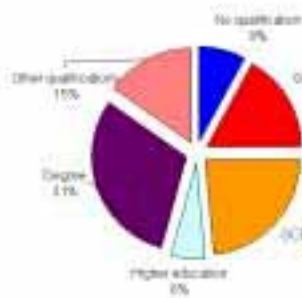
THE LONDON LABOUR MARKET
KINGSTON-UPON-THAMES

AVERAGE WEEKLY EARNINGS by INDUSTRY 2001 Data

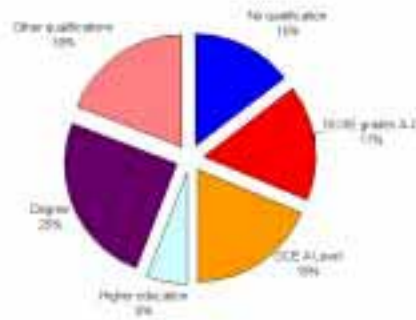


QUALIFICATIONS 2001 Data

Kingston-Upon-Thames



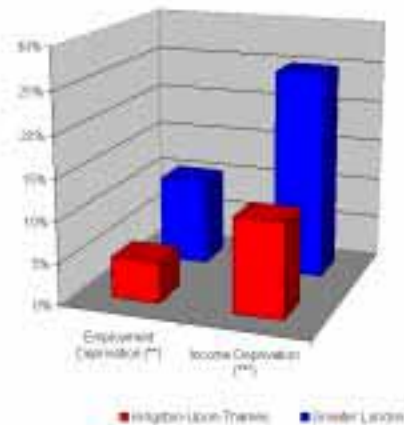
Greater London



SCHOOL PERFORMANCES 2002 Data

	Ranking position of the Borough (*)
-Average point score at KS2	4
-Average point score at KS3	2
-Percentage of pupils aged 15 who reached school leaving age with no GCSE or GNVQ passes	29
-Percentage of pupils aged 15 who gained five or more grades A-C in the GCSE or GNVQ	3

DEPRIVATION 2000 Data

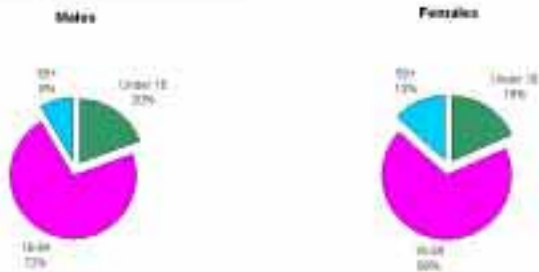


(*) The Borough with the best performance is ranked as the top 1
 (**) The index is the ratio between the number of Unemployed 16 years and the Working Age Population
 (***) The index is the ratio between the number of Income Deprived in the Borough and the Total Population

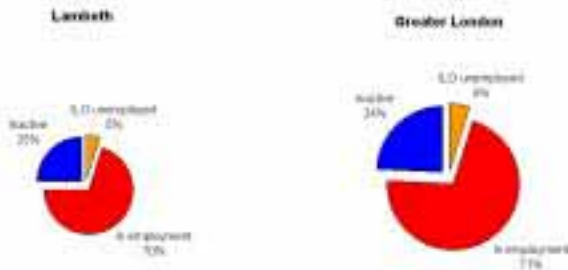
The London Labour Market

THE LONDON LABOUR MARKET LAMBETH

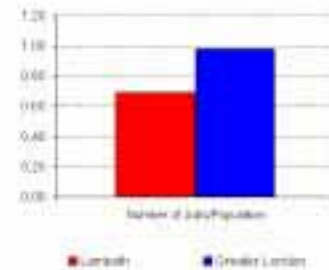
POPULATION by AGE 2001 Data



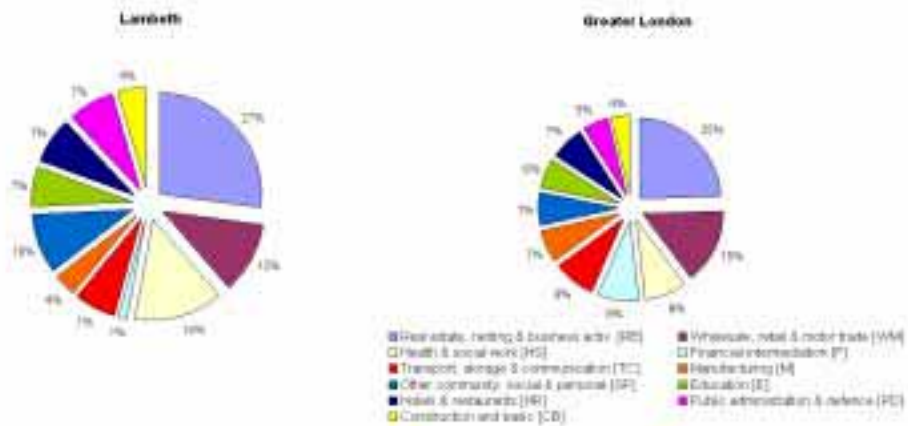
ACTIVITY 2001 Data



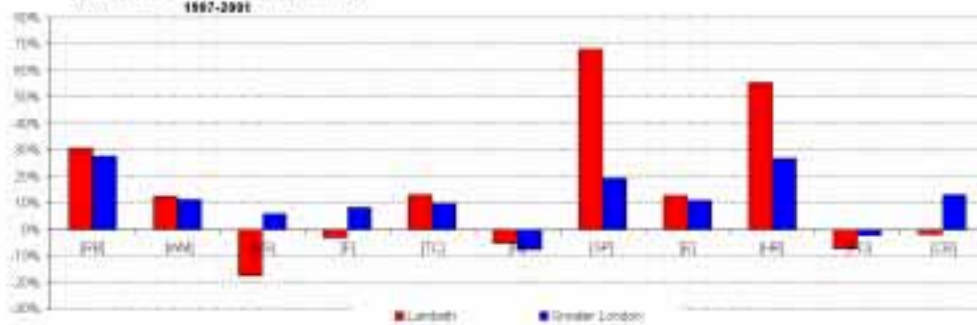
JOB DENSITY 2001 Data



EMPLOYMENT by INDUSTRY 2001 Data

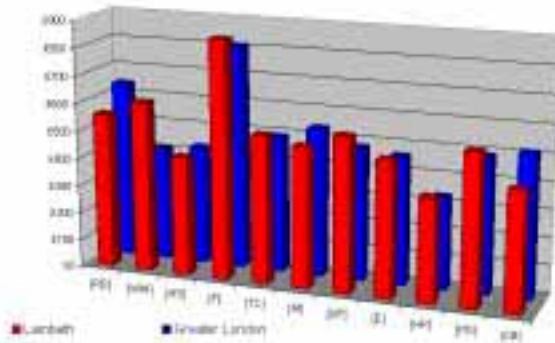


Growth Rates of Employment by Industry 1997-2001

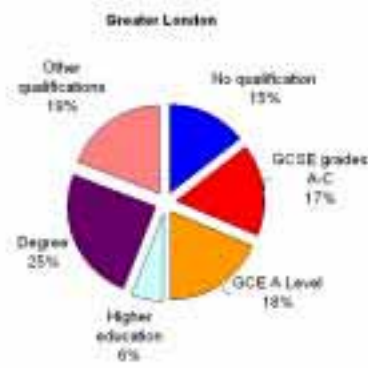
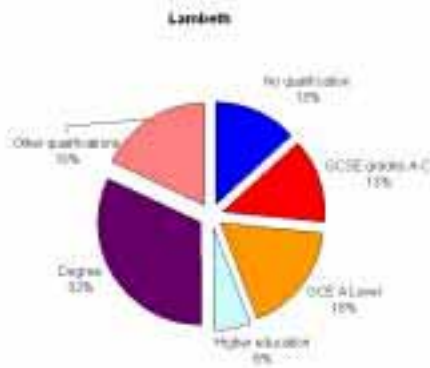


THE LONDON LABOUR MARKET
LAMBETH

AVERAGE WEEKLY EARNINGS by INDUSTRY 2001 Data



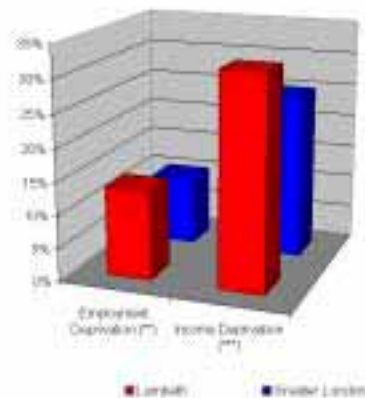
QUALIFICATIONS 2001 Data



SCHOOL PERFORMANCES 2002 Data

	Ranking position of the Borough (1)
-Average point score at KS2	26
-Average point score at KS3	26
-Percentage of pupils aged 15 who reached school leaving age with no GCSE or GNVQ passes	9
-Percentage of pupils aged 15 who gained five or more grades A-C in the GCSE or GNVQ	26

DEPRIVATION 2000 Data



(1) The Borough with the best performance is ranked as the best.
 (2) The index is the ratio between the number of Employment Deprived in the borough and the Working Age Population.
 (3) The index is the ratio between the number of Income Deprived in the borough and the Total Population.

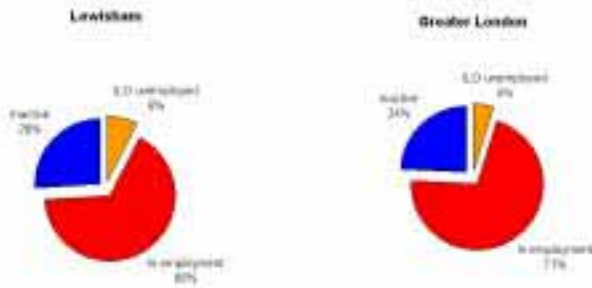
The London Labour Market

THE LONDON LABOUR MARKET LEWISHAM

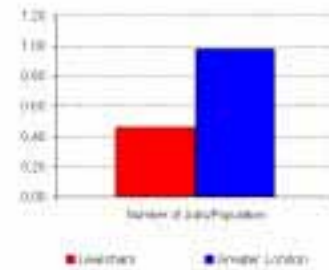
POPULATION by AGE 2001 Data



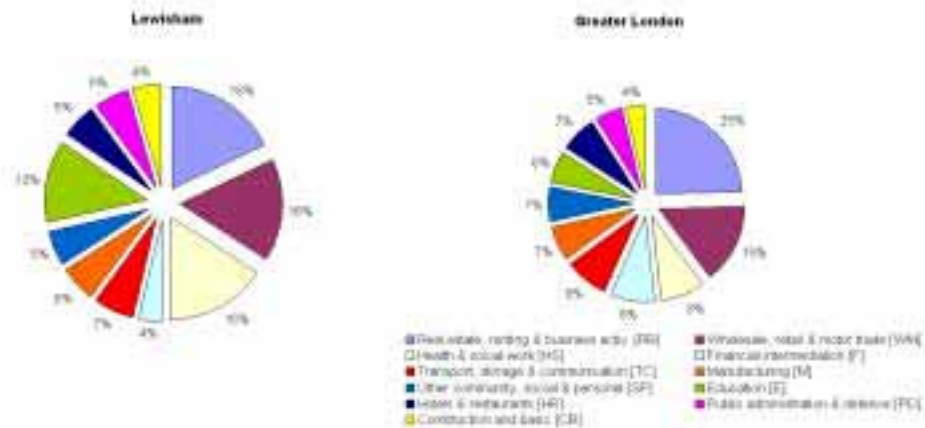
ACTIVITY 2001 Data



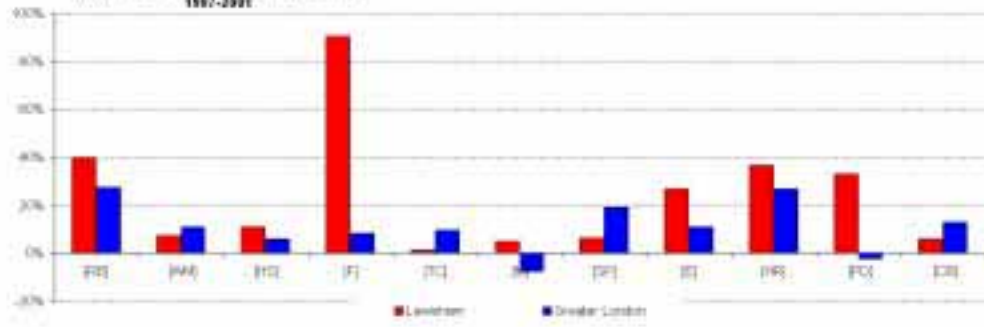
JOB DENSITY 2001 Data



EMPLOYMENT by INDUSTRY 2001 Data

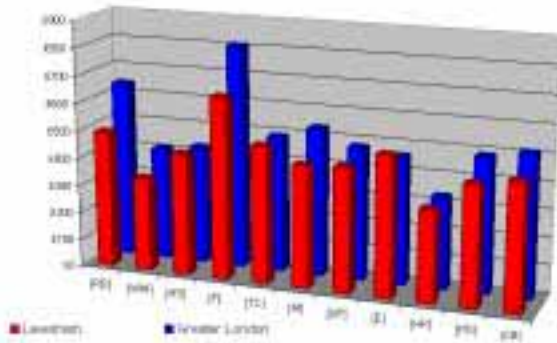


Growth Rates of Employment by Industry 1987-2001

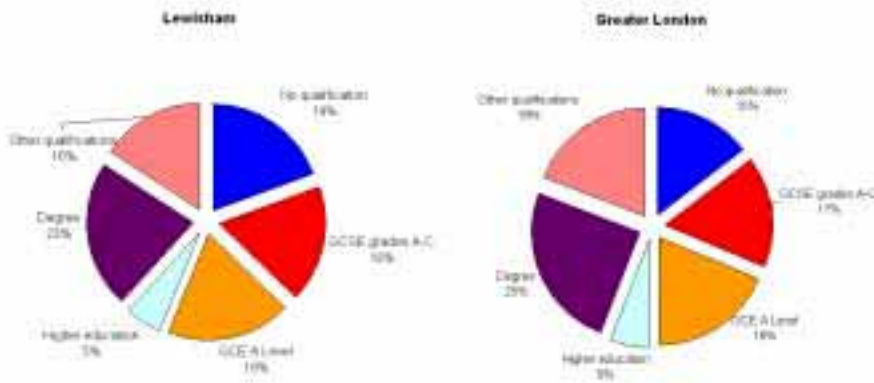


THE LONDON LABOUR MARKET
LEWISHAM

AVERAGE WEEKLY EARNINGS by INDUSTRY 2001 Data



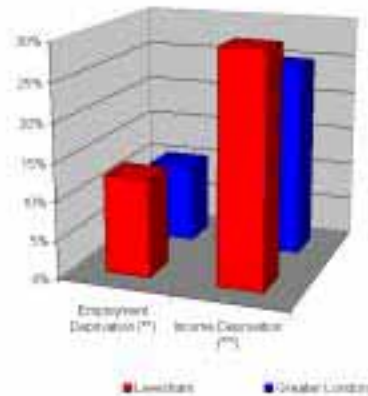
QUALIFICATIONS 2001 Data



SCHOOL PERFORMANCES 2002 Data

	Ranking position of the Borough (*)
-Average point score at KS2	24
-Average point score at KS3	25
-Percentage of pupils aged 15 who reached school leaving age with no GCSE or GNVQ passes	16
-Percentage of pupils aged 15 who gained five or more grades A-C in the GCSE or GNVQ	27

DEPRIVATION 2000 Data



(*) The Borough with the best performance is ranked as the top 1
 (**) The ratio is the ratio between the number of Employment Deprived in the borough and the Working Age Population
 (***) The ratio is the ratio between the number of Income Deprived in the borough and the Total Population

The London Labour Market

THE LONDON LABOUR MARKET MERTON

POPULATION by AGE 2001 Data

Males

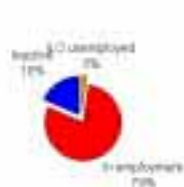


Females



ACTIVITY 2001 Data

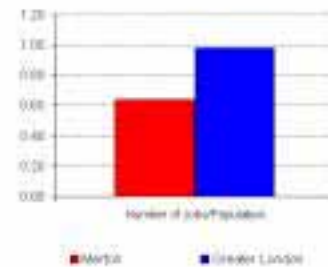
Merton



Greater London

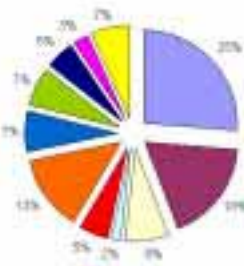


JOB DENSITY 2001 Data

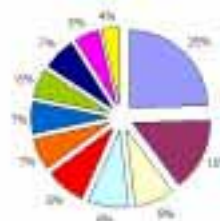


EMPLOYMENT by INDUSTRY 2001 Data

Merton

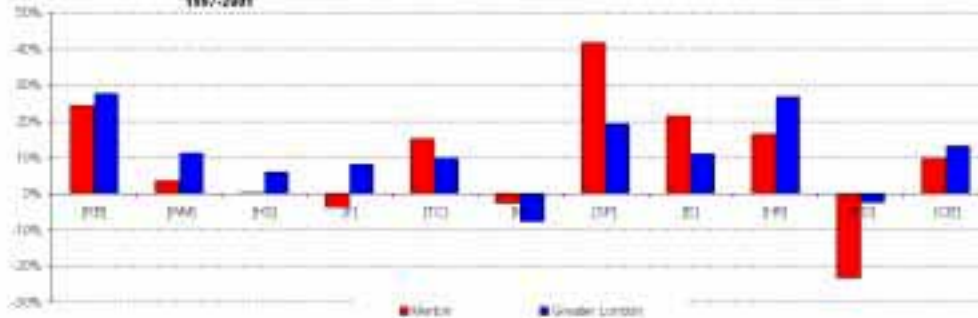


Greater London



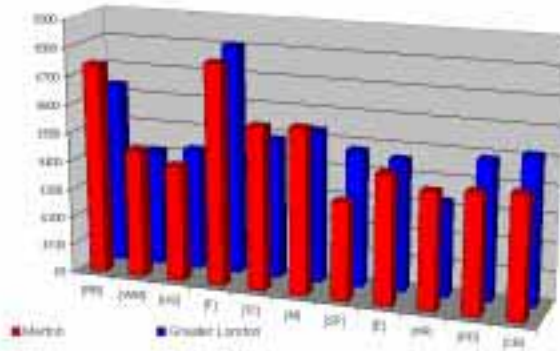
- Real estate, rental & business (RE)
- Health & social work (HS)
- Transport, storage & communication (TC)
- Other community, social & personal (CP)
- Retail & restaurants (R)
- Construction activities (CA)
- Information, culture & paper trade (IM)
- Finance & insurance (FI)
- Manufacturing (M)
- Education (E)
- Public administration & defence (DA)

Growth Rates of Employment by Industry 1997-2001

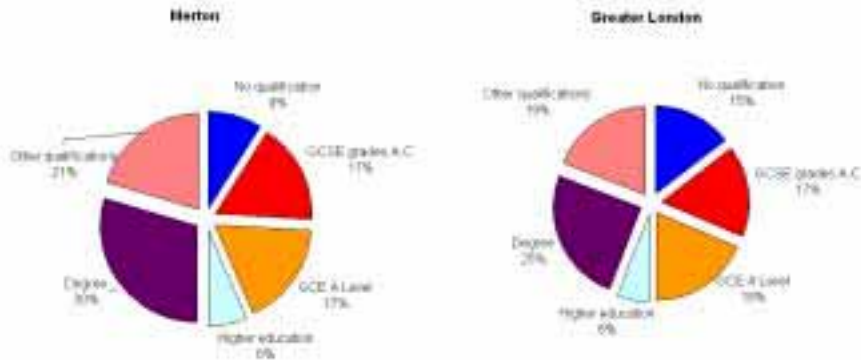


THE LONDON LABOUR MARKET
MERTON

AVERAGE WEEKLY EARNINGS by INDUSTRY 2001 Data



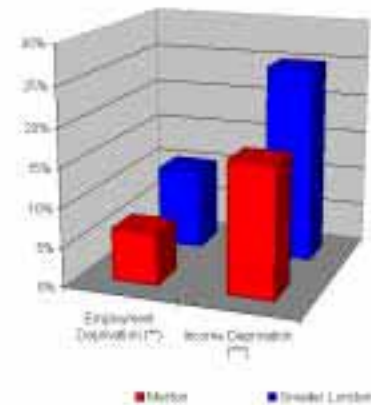
QUALIFICATIONS 2001 Data



SCHOOL PERFORMANCES 2002 Data

	Ranking position of the Borough (*)
-Average point score at KS2	20
-Average point score at KS3	20
-Percentage of pupils aged 15 who reached school leaving age with no GCSE or GNVQ passes	31
-Percentage of pupils aged 15 who gained five or more grades A-C in the GCSE or GNVQ	25

DEPRIVATION 2000 Data



(*) The Borough with the best performance is ranked as the top 1.
 (**) The index is the ratio between the number of Children in Need (CIN) in the Borough and the Working Age Population.
 (***) The index is the ratio between the number of Income Deprivation in the Borough and the Total Population.

The London Labour Market

THE LONDON LABOUR MARKET NEWHAM

POPULATION by AGE 2001 Data

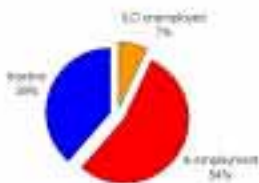


Greater London

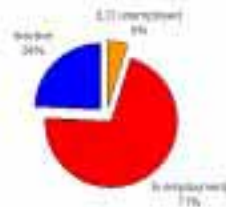


ACTIVITY 2001 Data

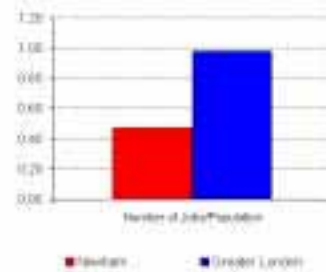
Newham



Greater London

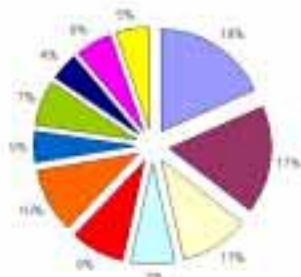


JOB DENSITY 2001 Data

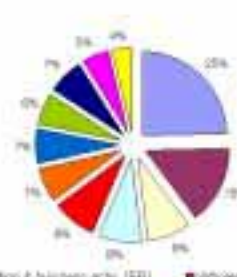


EMPLOYMENT by INDUSTRY 2001 Data

Newham



Greater London



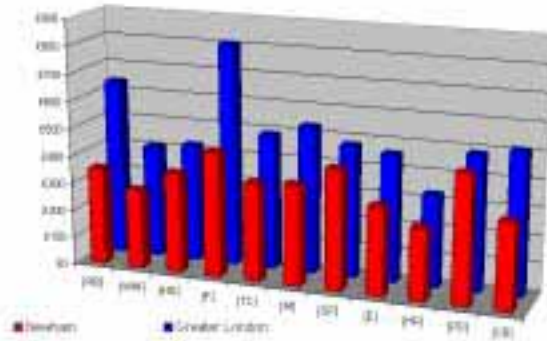
- 1.0 Wholesale, retail & motor trade (W)
- 2.0 Health & social work (H)
- 3.0 Transport, storage & communication (T)
- 4.0 Other community, social & services (O)
- 5.0 Hotels & restaurants (R)
- 6.0 Creative activities (C)
- 7.0 Information, media & culture (I)
- 8.0 Financial intermediation (F)
- 9.0 Manufacturing (M)
- 10.0 Education (E)
- 11.0 Public administration & defence (P)

Growth Rates of Employment by Industry 1997-2001

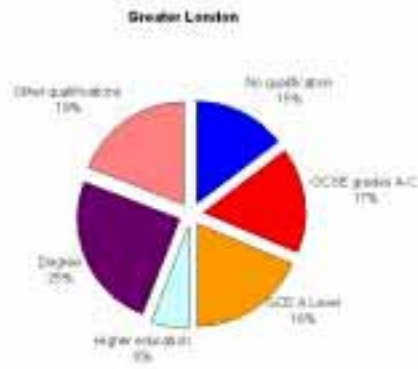
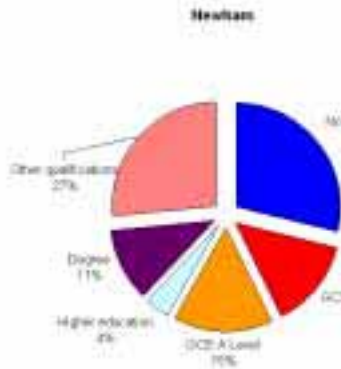


THE LONDON LABOUR MARKET
NEWHAM

AVERAGE WEEKLY EARNINGS by INDUSTRY 2001 Data



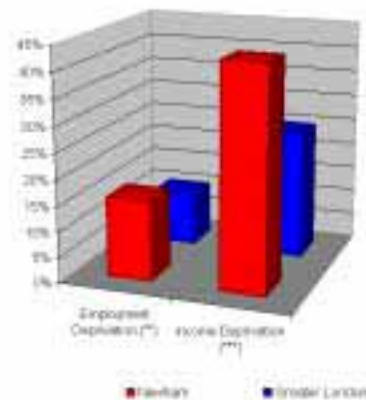
QUALIFICATIONS 2001 Data



SCHOOL PERFORMANCES 2002 Data

	Ranking position of the Borough (*)
-Average point score at KS2	30
-Average point score at KS3	27
-Percentage of pupils aged 15 who reached school leaving age with no GCSE or GNVQ passes	1
-Percentage of pupils aged 15 who gained five or more grades A-C in the GCSE or GNVQ	23

DEPRIVATION 2000 Data



(*) The Borough with the best performance is ranked as the No. 1
 (**) The ratio is the ratio between the number of Unemployed Registered in the Borough and the Working Age Population
 (***) The ratio is the ratio between the number of Income Deprived in the Borough and the Total Population

The London Labour Market

THE LONDON LABOUR MARKET REDBRIDGE

POPULATION by AGE 2001 Data

Males

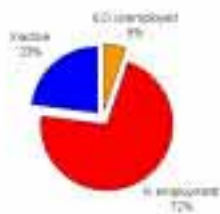


Females

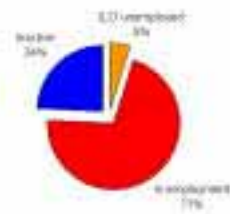


ACTIVITY 2001 Data

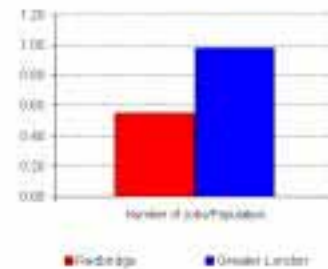
Redbridge



Greater London

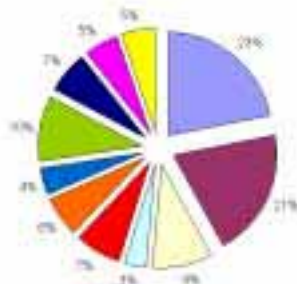


JOB DENSITY 2001 Data

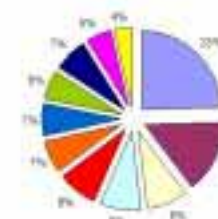


EMPLOYMENT by INDUSTRY 2001 Data

Redbridge

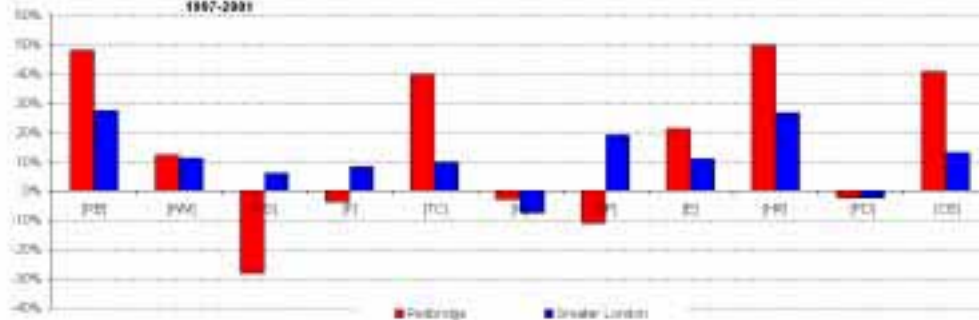


Greater London



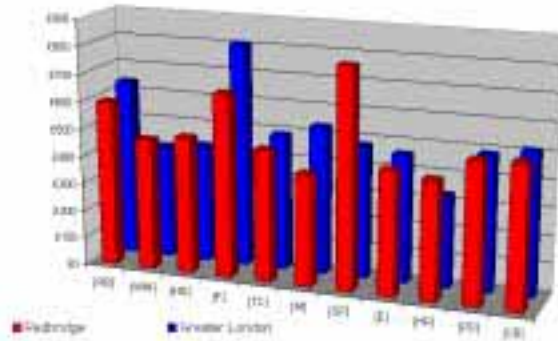
- Retail trade, clothing & footwear (RT)
- Health & social work (HS)
- Transport, storage & communication (TC)
- Other community, social & personal (OP)
- Hotels & restaurants (HR)
- Construction and base (CB)
- Wholesale retail & motor trade (WM)
- Physical intermediates (PI)
- Manufacturing (M)
- Education (E)
- Public administration & defence (PD)

Growth Rates of Employment by Industry
1997-2001

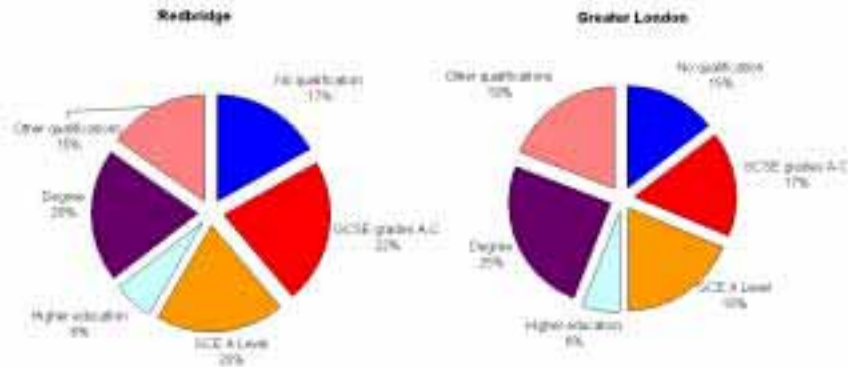


THE LONDON LABOUR MARKET
REDBRIDGE

AVERAGE WEEKLY EARNINGS by INDUSTRY 2001 Data



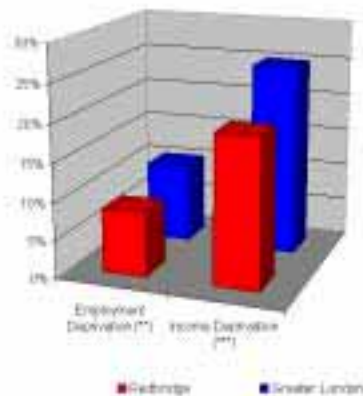
QUALIFICATIONS 2001 Data



SCHOOL PERFORMANCES 2002 Data

	Ranking position of the Borough (*)
-Average point score at KS2	11
-Average point score at KS3	5
-Percentage of pupils aged 15 who reached school leaving age with no GCSE or GNVQ passes	3
-Percentage of pupils aged 15 who gained five or more grades A-C in the GCSE or GNVQ	2

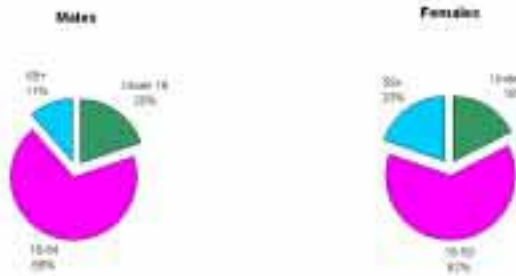
DEPRIVATION 2000 Data



(*) The Borough with the best performance is ranked as the best.
 (**) The ratio is the ratio between the number of Employment Deprived in the Borough and the Working Age Population.
 (***) The ratio is the ratio between the number of Income Deprived in the Borough and the Total Population.

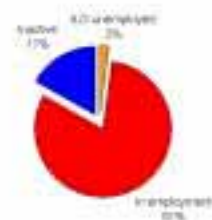
THE LONDON LABOUR MARKET
RICHMOND-UPON-THAMES

POPULATION by AGE 2001 Data

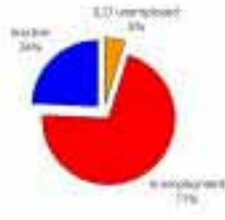


ACTIVITY 2001 Data

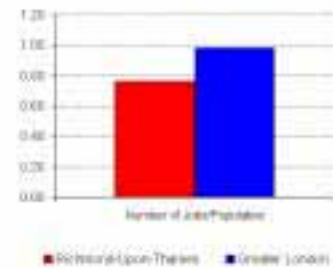
Richmond-Upon-Thames



Greater London

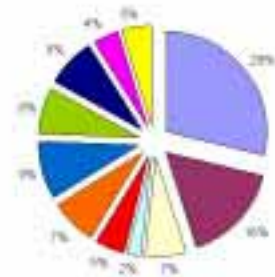


JOB DENSITY 2001 Data

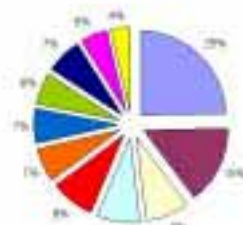


EMPLOYMENT by INDUSTRY 2001 Data

Richmond-Upon-Thames

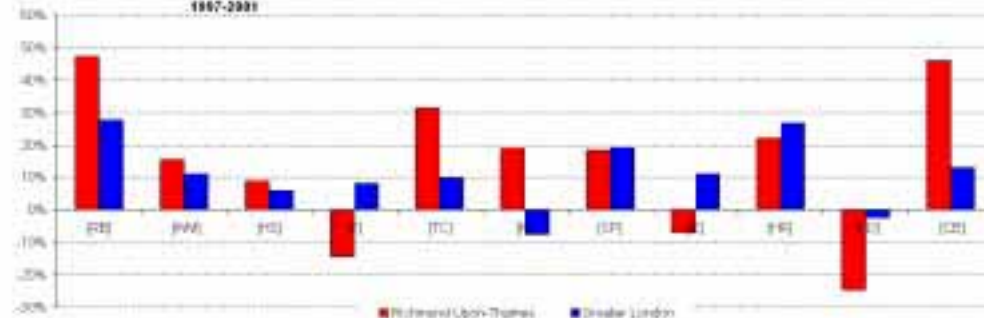


Greater London



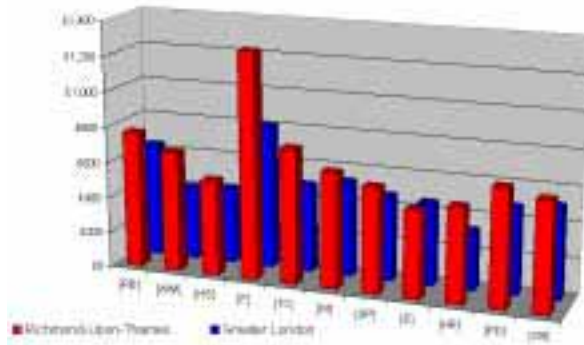
- Real estate, renting & business activities (RE)
- Health & social work (HS)
- Transport, storage & communication (TC)
- Other community, social & personal (OP)
- Hotels & restaurants (HR)
- Construction and base (CB)
- Wholesale, retail & motor trade (WM)
- Financial intermediation (FI)
- Manufacturing (M)
- Education (E)
- Public administration & defence (PD)

Growth Rates of Employment by Industry 1997-2001

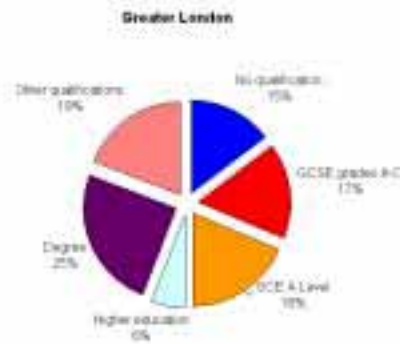
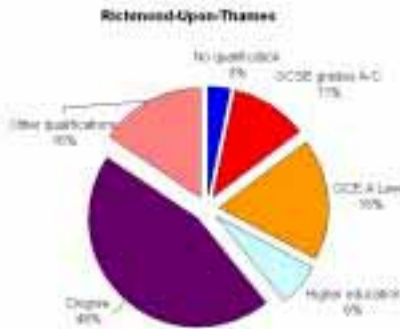


**THE LONDON LABOUR MARKET
RICHMOND-UPON-THAMES**

AVERAGE WEEKLY EARNINGS by INDUSTRY 2001 Data



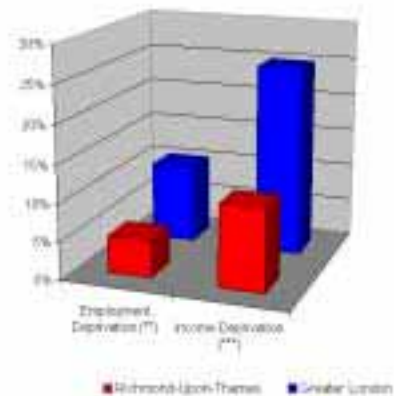
QUALIFICATIONS 2001 Data



SCHOOL PERFORMANCES 2002 Data

Metric	Ranking position of the Borough (*)
-Average point score at KS2	2
-Average point score at KS3	7
-Percentage of pupils aged 15 who reached school leaving age with no GCSE or GNVQ passes	25
-Percentage of pupils aged 15 who gained five or more grades A-C in the GCSE or GNVQ	10

DEPRIVATION 2000 Data

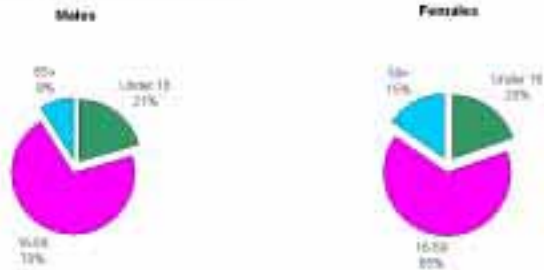


(*) The Borough with the best performance is ranked as the best.
 (**) The index is the ratio between the number of Employment Deprivations in the Borough and the Working Age Population.
 (***) The index is the ratio between the number of Income Deprivations in the Borough and the Total Population.

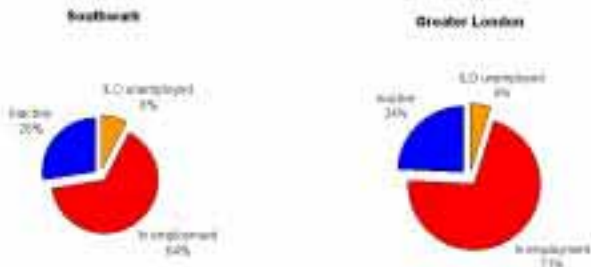
The London Labour Market

THE LONDON LABOUR MARKET SOUTHWARK

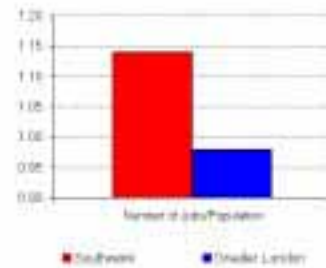
POPULATION by AGE 2001 Data



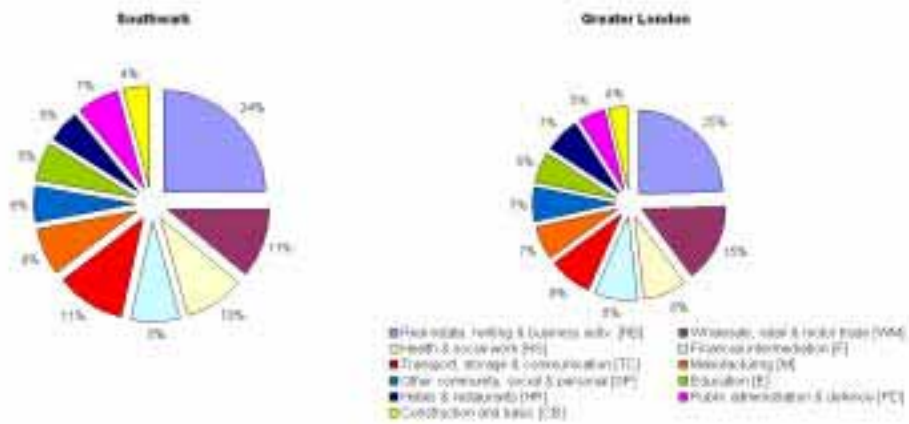
ACTIVITY 2001 Data



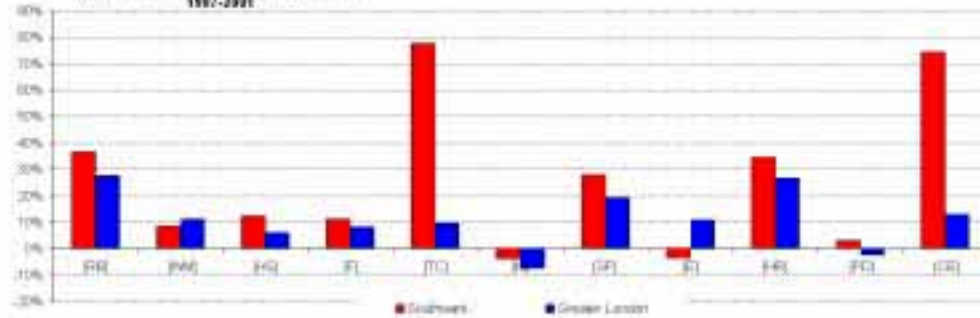
JOB DENSITY 2001 Data



EMPLOYMENT by INDUSTRY 2001 Data

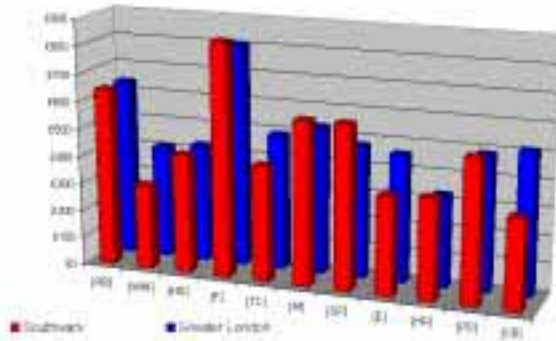


Growth Rates of Employment by Industry 1987-2001

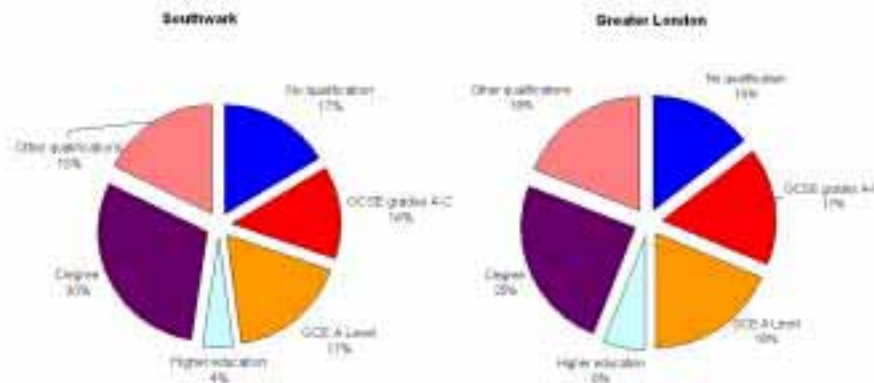


THE LONDON LABOUR MARKET
SOUTHWARK

AVERAGE WEEKLY EARNINGS by INDUSTRY 2001 Data



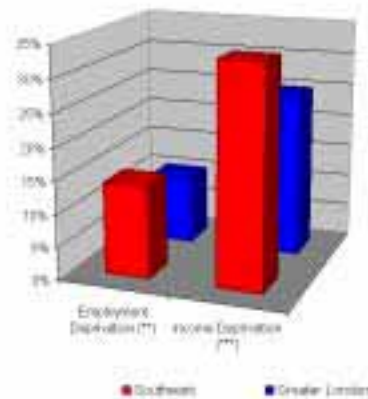
QUALIFICATIONS 2001 Data



SCHOOL PERFORMANCES 2002 Data

	Ranking position of the Borough (*)
-Average point score at KS2	33
-Average point score at KS3	31
-Percentage of pupils aged 15 who reached school leaving age with no GCSE or GNVQ passes	17
-Percentage of pupils aged 15 who gained five or more grades A-C in the GCSE or GNVQ	28

DEPRIVATION 2000 Data

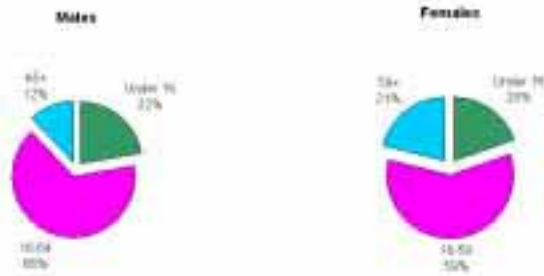


(*) The Borough with the best performance is ranked as the top 1.
 (**) The index is the ratio between the number of Pupils not Qualified in the Borough and the Working Age Population.
 (***) The index is the ratio between the number of Income Deprived in the Borough and the Total Population.

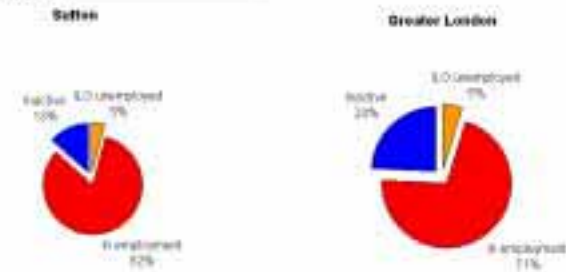
The London Labour Market

THE LONDON LABOUR MARKET SUTTON

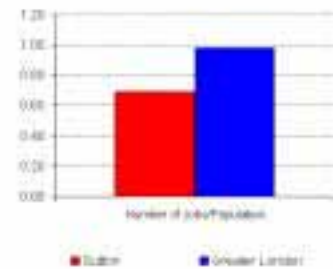
POPULATION by AGE 2001 Data



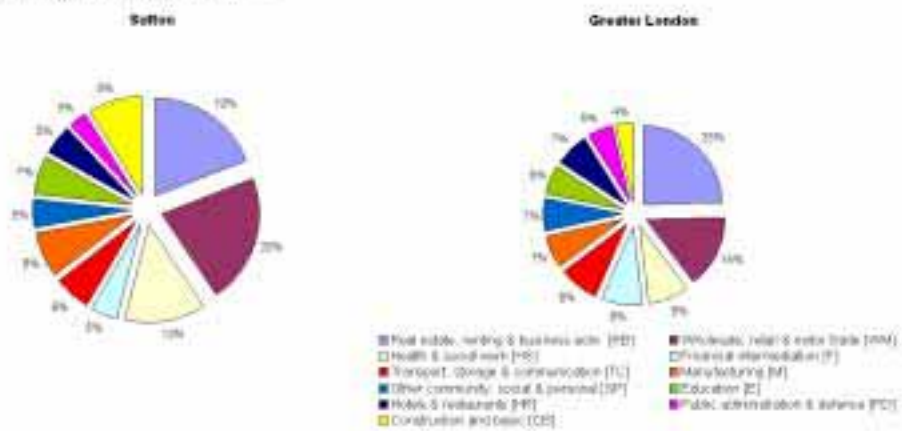
ACTIVITY 2001 Data



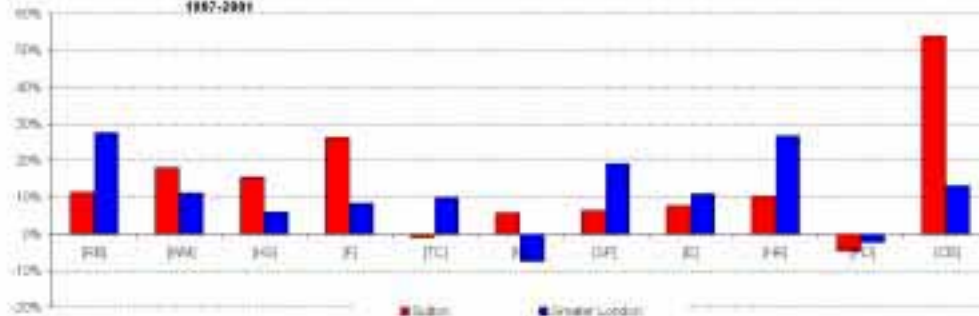
JOB DENSITY 2001 Data



EMPLOYMENT by INDUSTRY 2001 Data

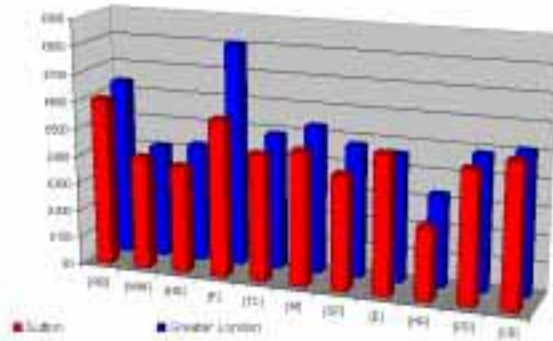


Growth Rates of Employment by Industry
1987-2001

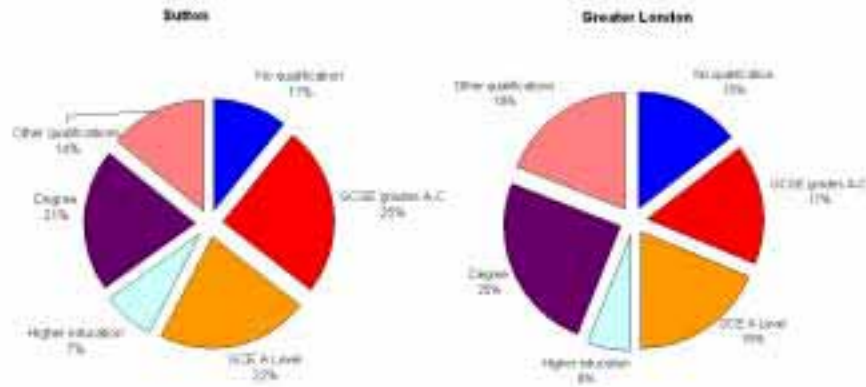


THE LONDON LABOUR MARKET
SUTTON

AVERAGE WEEKLY EARNINGS by INDUSTRY 2001 Data



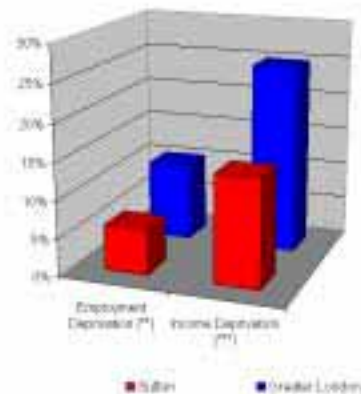
QUALIFICATIONS 2001 Data



SCHOOL PERFORMANCES 2002 Data

	Ranking position of the Borough (*)
-Average point score at KS2	7
-Average point score at KS3	1
-Percentage of pupils aged 15 who reached school leaving age with no GCSE or GNVQ passes	7
-Percentage of pupils aged 15 who gained five or more grades A-C in the GCSE or GNVQ	1

DEPRIVATION 2000 Data



[*] The Borough with the best performance is ranked as the best.
 [**] The index is the ratio between the number of Employment Deprived in the borough and the Working Age Population.
 [***] The index is the ratio between the number of Income Deprived in the borough and the Total Population.

The London Labour Market

THE LONDON LABOUR MARKET TOWER HAMLETS

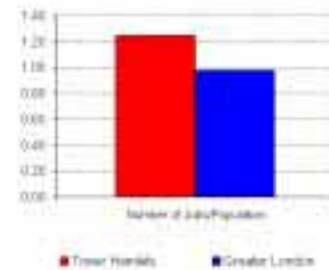
POPULATION by AGE 2001 Data



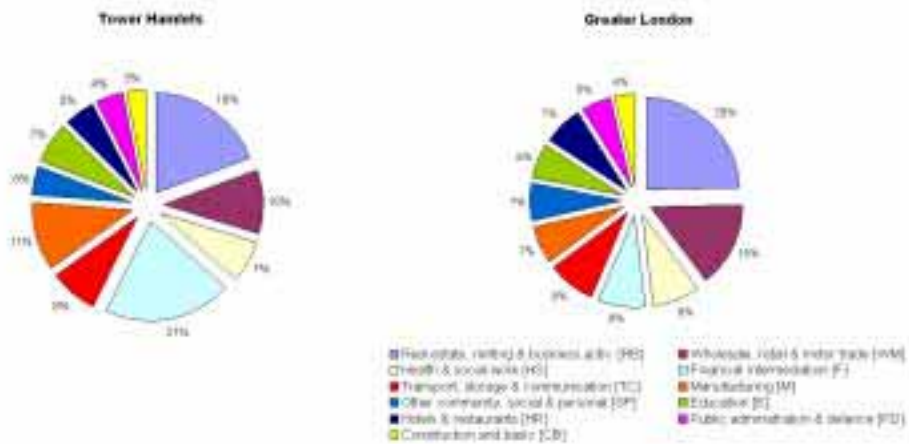
ACTIVITY 2001 Data



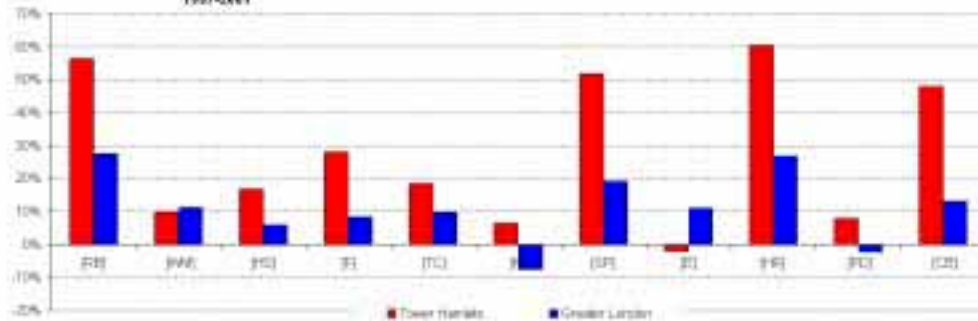
JOB DENSITY 2001 Data



EMPLOYMENT by INDUSTRY 2001 Data

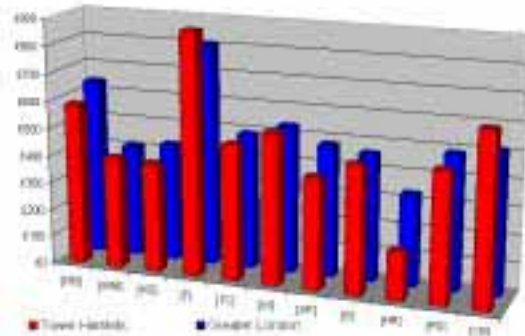


Growth Rates of Employment by Industry 1997-2001

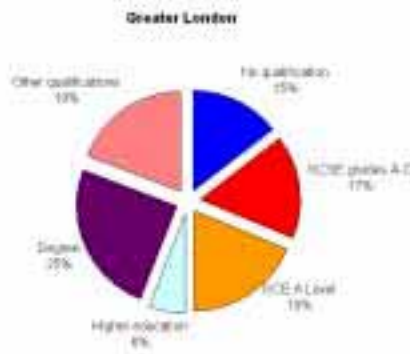


THE LONDON LABOUR MARKET
TOWER HAMLETS

AVERAGE WEEKLY EARNINGS by INDUSTRY 2001 Data



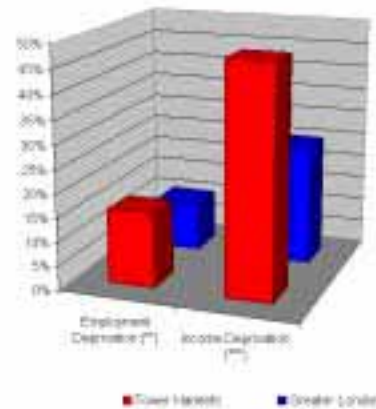
QUALIFICATIONS 2001 Data



SCHOOL PERFORMANCES 2002 Data

	Ranking position of the Borough (*)
-Average point score at KS2	28
-Average point score at KS3	32
-Percentage of pupils aged 15 who reached school leaving age with no GCSE or GNVQ passes	4
-Percentage of pupils aged 15 who gained five or more grades A-C in the GCSE or GNVQ	21

DEPRIVATION 2000 Data



(*) The Borough with the best performance is ranked as the top 1.
 (**) The index is the ratio between the number of Employment Deprived in the borough and the Working Age Population.
 (***) The index is the ratio between the number of Income Deprived in the borough and the Total Population.

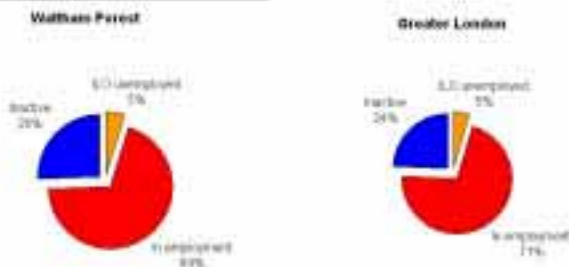
The London Labour Market

THE LONDON LABOUR MARKET WALTHAM FOREST

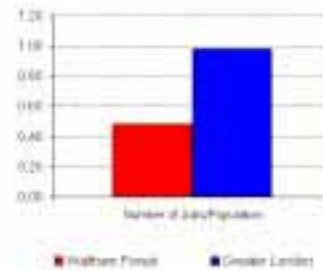
POPULATION by AGE 2001 Data



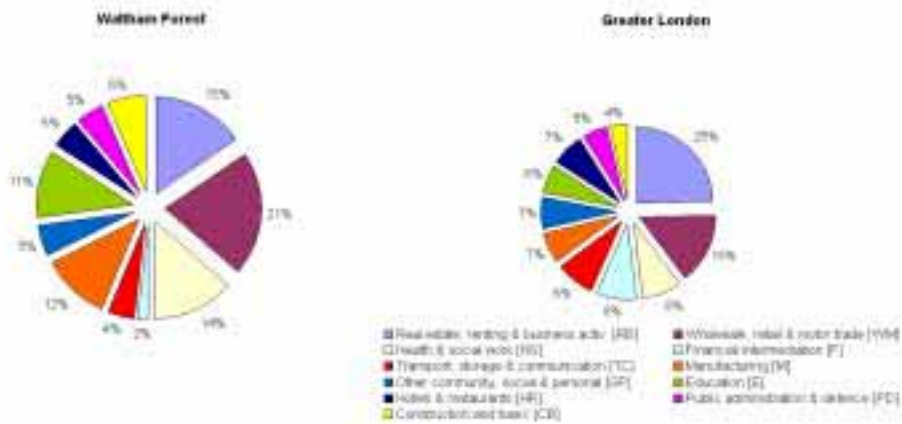
ACTIVITY 2001 Data



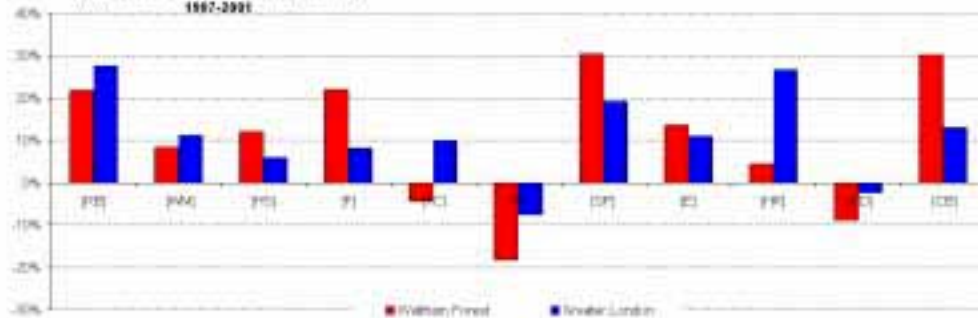
JOB DENSITY 2001 Data



EMPLOYMENT by INDUSTRY 2001 Data

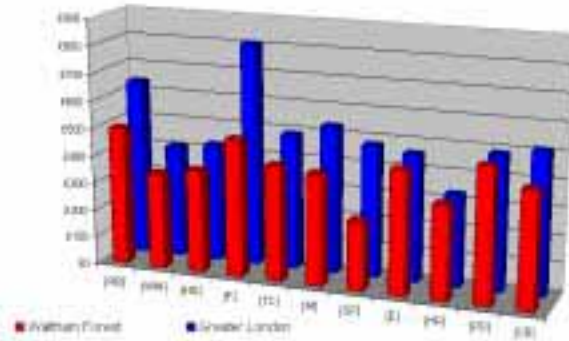


Growth Rates of Employment by Industry 1997-2001

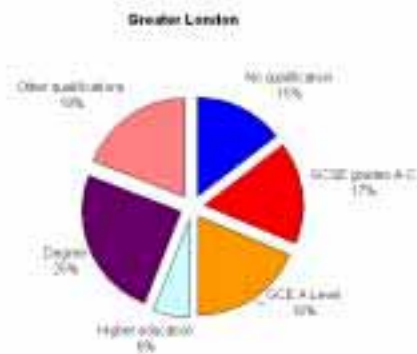
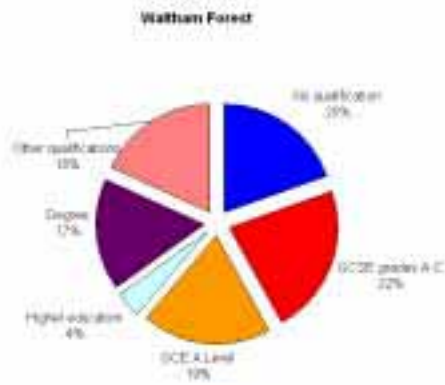


THE LONDON LABOUR MARKET
WALTHAM FOREST

AVERAGE WEEKLY EARNINGS by INDUSTRY 2001 Data



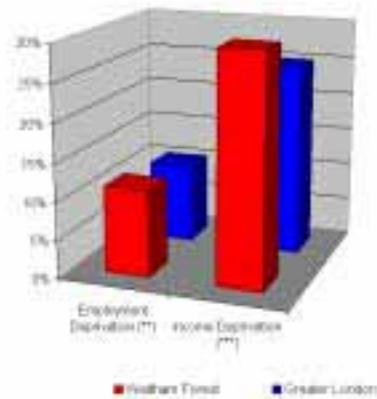
QUALIFICATIONS 2001 Data



SCHOOL PERFORMANCES 2002 Data

	Ranking position of the Borough (*)
-Average point score at KS2	31
-Average point score at KS3	24
-Percentage of pupils aged 15 who reached school leaving age with no GCSE or GNVQ passes	20
-Percentage of pupils aged 15 who gained five or more grades A-C in the GCSE or GNVQ	20

DEPRIVATION 2000 Data



(*) The Borough with the best performance is ranked as the best.
 (**) The value is the ratio between the number of Unemployed (aged 16 and over) in the borough and the Working Age Population.
 (***) The value is the ratio between the number of House Deprived in the borough and the Total Population.

The London Labour Market

THE LONDON LABOUR MARKET WANDSWORTH

POPULATION by AGE 2001 Data

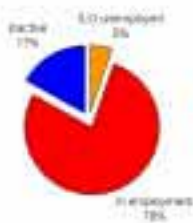


Females

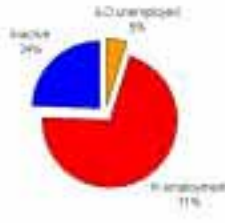


ACTIVITY 2001 Data

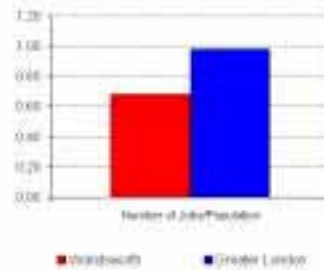
Wandsworth



Greater London

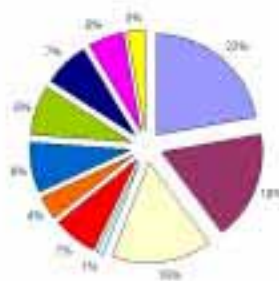


JOB DENSITY 2001 Data

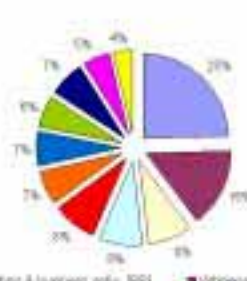


EMPLOYMENT by INDUSTRY 2001 Data

Wandsworth



Greater London



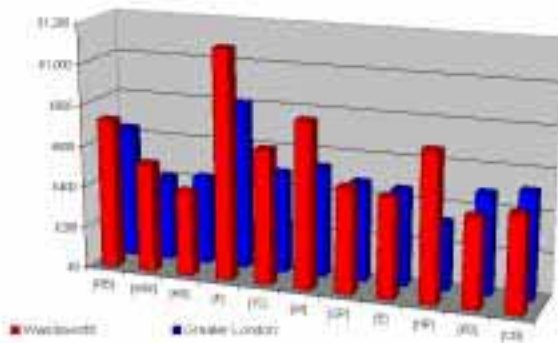
- Real estate, renting & business activities (RE)
- Health & social work (HS)
- Transport, storage & communication (TC)
- Other community, social & personal (OP)
- Retail & recreation (RR)
- Construction and other (CO)
- Information & communication (IC)
- Manufacturing (M)
- Education (E)
- Public administration & defence (PD)
- Financial intermediation (FI)

Growth Rates of Employment by Industry
1997-2001

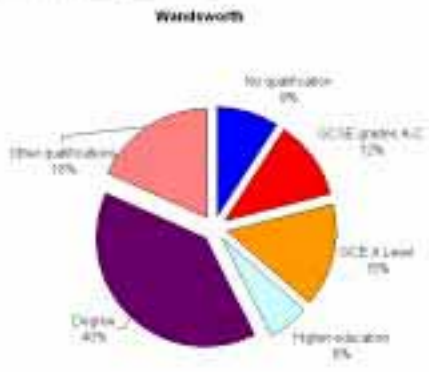


THE LONDON LABOUR MARKET
WANDSWORTH

AVERAGE WEEKLY EARNINGS by INDUSTRY 2001 Data



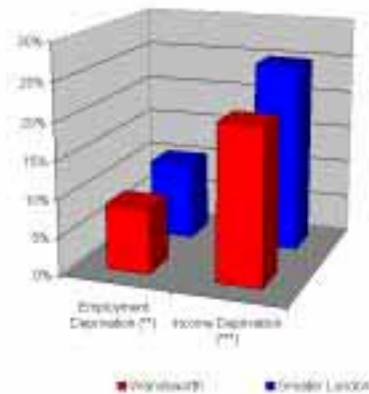
QUALIFICATIONS 2001 Data



SCHOOL PERFORMANCES 2002 Data

	Ranking position of the Borough (*)
-Average point score at KS2	23
-Average point score at KS3	14
-Percentage of pupils aged 15 who reached school leaving age with no GCSE or GNVQ passes	16
-Percentage of pupils aged 15 who gained five or more grades A-C in the GCSE or GNVQ	16

DEPRIVATION 2000 Data

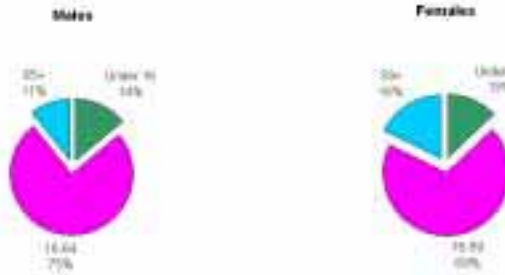


(*) The Borough with the best performance is ranked as the No. 1.
 (**) The ratio is the ratio between the number of Employment Deprived in the Borough and the Working Age Population.
 (***) The ratio is the ratio between the number of Income Deprived in the Borough and the Total Population.

The London Labour Market

THE LONDON LABOUR MARKET WESTMINSTER

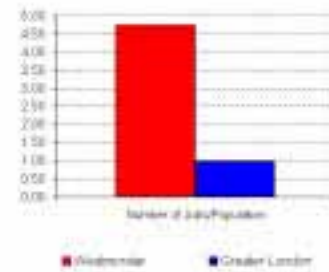
POPULATION by AGE 2001 Data



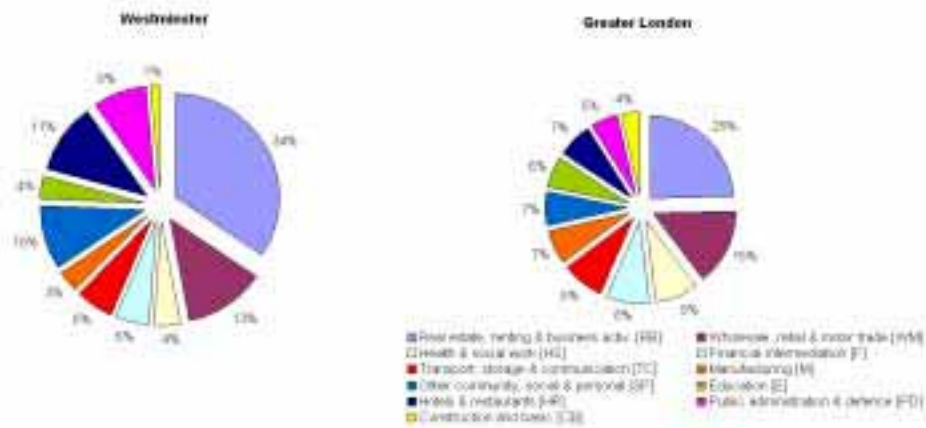
ACTIVITY 2001 Data



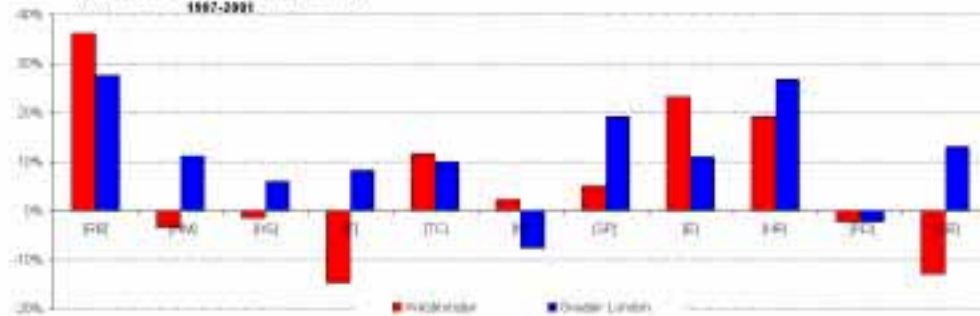
JOB DENSITY 2001 Data



EMPLOYMENT by INDUSTRY 2001 Data

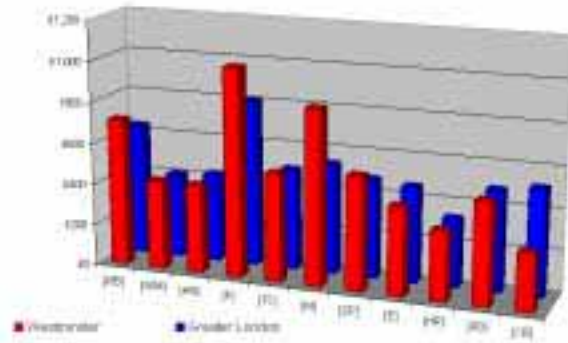


Growth Rates of Employment by Industry 1997-2001

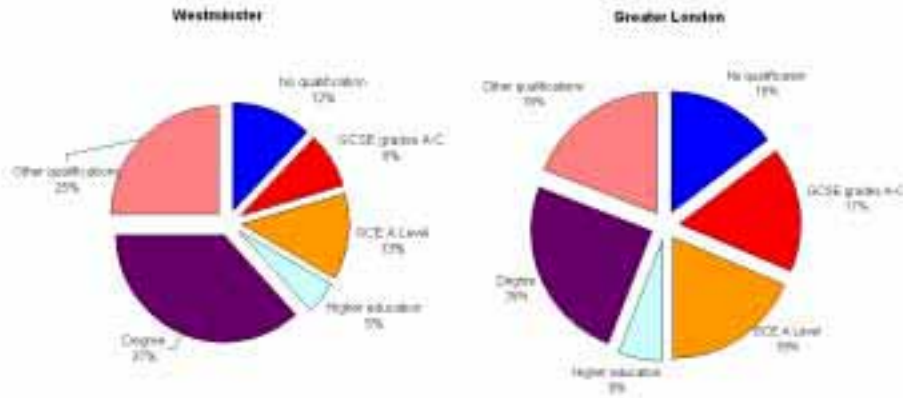


THE LONDON LABOUR MARKET
WESTMINSTER

AVERAGE WEEKLY EARNINGS by INDUSTRY 2001 Data



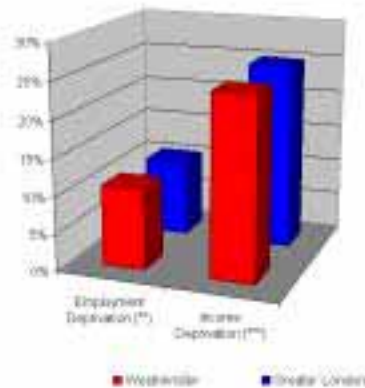
QUALIFICATIONS 2001 Data



SCHOOL PERFORMANCES 2002 Data

	Ranking position of the Borough (*)
-Average point score at KS2	12
-Average point score at KS3	21
-Percentage of pupils aged 15 who reached school leaving age with no GCSE or GNVQ passes	23
-Percentage of pupils aged 15 who gained five or more grades A-C in the GCSE or GNVQ	24

DEPRIVATION 2000 Data



(*) The Borough with the best performance is ranked as the top 1
 (**) The index is the ratio between the number of Employment Deprived in the Borough and the Working Age Population
 (***) The index is the ratio between the number of Score Deprived in the Borough and the Total Population

Bibliography

Audit Commission, 2002, *Recruitment and Retention; A Public Service Workforce for the Twenty First Century*, Audit Commission.

Bexley council, 2003, <http://www.bexley.gov.uk/business/recruit/jobsearch.html>

Camden council, 2003,
http://www.Camden.gov.uk/learn/adult/adult/adult_community.htm

CareandHealth, 2003, *A Snapshot of the Social Care Workforce in London*, Topps London.

Connexions, 2003, <http://www.connexions.gov.uk/>

Corporation of London/LSE, 2002, *London's Place in the UK Economy*.

CSO, 1995, *Regional Trends No. 30*, Central Statistical Office, London.

DfES, 2001, *Education and Skills: Delivering Results A Strategy to 2006*, Department for Education and Skills.

DfES, 2003a, <http://www.dfes.gov.uk/index.htm>

DfES, 2003b, <http://www.dfes.gov.uk/ukonlinecentres/whatis/default.cfm>

DfES, 2003c,
<http://www.standards.dfes.gov.uk/excellence/abouteic/?template=pub&articleid=3915>

DfES, 2003, Department for Education and Skills
<http://www.dfes.gov.uk/popularquestions/questions.cfm?keywords=&gatewayCategoryId=13&mainCategoryId=119&expandID=6198&new=0#6198>

DH, 2000, *The NHS Plan; A Plan for Investment, A Plan for Reform*, Department of Health, Cm 4818-I.

DH, 2002, *Staff in the NHS 2002*, Department of Health.

DH, NHS Workforce Vacancy Survey, Data from 1999 to 2003, Department of Health, <http://www.doh.gov.uk/public/vacancysurvey.htm>

DTI, 2003a, http://www.dti.gov.uk/about_dti.html

DTI, 2003b, <http://www.dti.gov.uk/er/nmw/>

DWP, 2003, <http://www.dwp.gov.uk/aboutus/index.asp>

The London Labour Market

Elliott, B, 2003, Labour Markets in the NHS: An Agenda for Research, *Health Economics*, 12, pp.797-801.

Forth, J, Metcalf, H and Millward, N, 2002, *London's unemployment in the 1990s: Tests of Demand-side Explanations for it's Relative Growth*, National Institute of Economic and Social Research Discussion Paper No. 203, London.

GLA Economics, 2003, *The GLA's London Workforce Employment Series*,

Hackney Live, 2003, <http://www.hackney.gov.uk/comis-org.htm?OrgID=4935>

HM Treasury and DWP, 2001, *The Changing Welfare State: Employment Opportunity for All*, HM Treasury and the Department for Work and Pensions.

HM Treasury, 2002, *Cross Cutting Review of the Public Sector Labour Market*, HM Treasury.

HO, 2002, *The National Policing Plan 2003-2006*, Home Office, http://www.policereform.gov.uk/docs/nat_police_plan02.pdf

Inland Revenue, 2003, <https://www.taxcredits.inlandrevenue.gov.uk/Qualify/WhatAreTaxCredits.aspx>

LDA/PACEC, 2003, *Understanding London's Sub-Regional Economies*.

Lewisham Online, 2003, http://www.Lewisham.gov.uk/Jobs/opening_doors.asp

ODPM, 2003, http://www.odpm.gov.uk/stellent/groups/odpm_housing/documents/page/odpm_housing_023635.hcsp

ONS, 2000, *Regional Trends No. 35*, Office for National Statistics, London.

ONS, 2002, *Region in Figures: London*, No. 5, Office for National Statistics, London.

Thorn and Convery, 2003, *Employer Engagement and the London Labour Market*.

RCGP, 2003, *Summary Paper No.11: GP Retention and Recruitment: The Crisis in London*, Royal College of General Practitioners.

Wandsworth council, 2003, <http://www.wandsworth.gov.uk/Home/CommunityServices/AdultEducation/default.htm>