



CONTENTS Page No.

Feature report: **Young black people and the CJS** _____ 1

1. CRIME AND VICTIMISATION

British Crime Survey _____ 3
Recorded crime:
 Trends since 2001/02 _____ 3
 Trends for Apr – Dec '06 _____ 4
 The extent of
 different types of crime _____ 4
 Gun and knife enabled crime _____ 4
 Sanctioned detections _____ 5
 Focus on rising crime _____ 5
 Transport and crime _____ 6

2. VICTIMS AND OFFENDERS

Crime, victims and accused _____ 7
 Youth victims and accused _____ 7
 Ethnicity, victims and
 accused _____ 8
 Women’s safety _____ 9
 Those accused of gun and
 knife crime _____ 10

3. POLICE AND POLICING

Police strength _____ 11
 Police diversity _____ 11
 Safer Neighbourhoods _____ 12
 Stop and search _____ 12

4. CRIMINAL JUSTICE

Criminal Justice _____ 14
 Prison population _____ 14

5. FIRE AND EMERGENCY

Key statistics _____ 16

6. COMMUNITY SAFETY DEVELOPMENTS

Policy and research _____ 17

Feature report:

Young black people and the criminal justice system

Adapted from the Mayor’s submission to the Home Affairs Committee Inquiry

Young black people (those aged up to 17 and from African, Caribbean, and other black ethnicities) are over-represented at practically all stages of the criminal justice system. This is a particular concern for London, which is home to over two-thirds of black people in England and Wales.

London	White %	Black %	Asian %	Other ethnic minorities %
Youth population	59	15*	17	9
Stop and search	49	37	10	3
Accused of crime by police	52	31	7	10
Police warning, reprimand or other pre court decision	59	26	10	5
Remanded in custody until trial	35	49	6	10
Given a custodial sentence	40	43	6	11
Dealt with by Youth Offending Teams	51	30	9	9

*This can be used as a benchmark to measure over or under representation

Offending by young black people

When examining self-report data on offending by young people (e.g. D. Armstrong et al, ‘Children, Risk and Crime, Home Office Research Survey 278, 2005) there is little evidence to suggest that black people are more likely to offend than white people. Yet in London during the period April 2005-February 2006, the rate of youths accused of crimes per 1000 population was 63 for black people and 27 for white people. This equates to 2.3 black youths accused for every 1 white.

These figures may go a significant way to explaining the over-representation of young black people in the criminal justice system, and especially in custody. However it is important to note that offending figures for black people are likely to be amplified if the public were more likely to report offences when the suspect was black, or if the police were more likely to pursue the investigation and bring charges.

Report continued...

The vast majority of people from every ethnic background are law-abiding but the fact that black people are far more likely to be accused of personal robbery (58% of accused Apr – Jan 06) may feed into Judges' and Magistrates' perceptions of black people as posing a greater risk to the community generally. The disproportionate number of black people being arrested for drugs (see below), rape, homicide (both 40% of all accused), and weapon-enabled offences (46% Oct – Dec '06) is likely to further fuel preconceptions. The Mayor urged the Committee to also examine the role of the media in perpetuating such stereotypes generally.

Drugs

Despite only accounting for 11 per cent of Londoners, black people accounted for 67 per cent of those accused of supplying crack cocaine and almost 40 per cent of those found in possession in London during 2003/04. This has particularly significant implications as crack cocaine addiction also drives a lot of acquisitive crime, some of which is violent.

Arrest referral statistics show that almost half of arrestees who reported using crack cocaine were black. A corresponding proportion of black people might be expected in drug treatment but National Drug Treatment Monitoring System (NDTMS) figures have previously shown only 10 per cent of clients presenting to specialist drug agencies for crack cocaine treatment are black.

Sentencing

There were 4,219 young black people sentenced during 2004/05 in London – 32 per cent of all young people sentenced in London. Of these, 31 per cent were given a community sentence, 24 per cent a referral order, 16 per cent fined, 6 per cent granted conditional discharge, 7 per cent given a compensation order, 3 per cent sentenced to an action plan order and 1 per cent granted an absolute discharge. The proportion of young black offenders sentenced to custody was the highest of all ethnic groups – almost twice that of white youths (11 per cent compared to 6 per cent).

Prison

There is substantial over-representation, relative to the numbers of the population, of young black men in the prison system. Whilst many young offenders from London are held outside of the capital, at Feltham, the only Young Offender Institution in London, 258 of the 588 prisoners held there (41 per cent) were black (as of 31 December 2006). In all, 59 per cent of Feltham's population are from BAME (black Asian and minority ethnic) groups.

Many black prisoners believe they experience racist attitudes. According to the December 2005 Prisons Inspectorate report 'Parallel Worlds: a thematic review of race relations in prisons', most visible minority prisoners believed there was racism and that in the main this manifested itself in differential access to the prison regime and treatment by staff. Black men were most likely to claim they were victimised by staff.

Criminal Justice Staff

Black (and other BAME) staff are significantly under-represented within the criminal justice workforce, especially at senior levels. Dedicated race equality training is not mandatory in all criminal justice agencies. Latest figures for January 2007 show that 726 of the 31,012 Metropolitan Police officer workforce (2.3 per cent) were of black ethnicity; a further 15 per cent of Police Community Support Officers are black. Of the 41 most senior officers at Commander rank or above, 2 are from a Black and Minority Ethnic background.

Only 24 of the 2,208 members of the judiciary are black. Not a single one of the 95 High Court Judges or 34 Lord Justices are black (Section 95 Stats, 2005). Nationally, just over 2 per cent (626) of the 28,300 Magistrates are black.

...Report continued.

Just 1.5 per cent of solicitors with practising certificates and 2.6 per cent of barristers are black. At the time of writing not a single member of a London prison senior management team is black.

Towards an Understanding of the Wider Social Causes of the Over-Representation

There is no doubt that young people from BAME groups are significantly over-represented within the youth justice system. However, it remains unclear how far these differences in representation are linked to ethnicity alone, or how far they are linked to factors such as age, social and economic circumstances, gender, criminal record and the nature and seriousness of the charge.

Young black people are more likely than the general population to have a history of poor education achievement and a wide range of health and social needs. This is likely to contribute to their levels of offending.

- Children in London from BAME groups are more likely to experience poverty.
- Black Caribbean/African groups are over-represented in London's homeless population.
- Black people are over-represented in the mental health system.
- Children from BAME groups are more likely to have a long-term illness.
- In London, in 2003, 32.2 per cent of black Caribbean pupils, 34.5 per cent of 'black other' pupils and 43.6 per cent of black African pupils achieved 5 or more GCSE Grades A* - C, compared with an average for all pupils of 50.2 per cent. Evidence suggests that inequalities in attainment for black Caribbean pupils become greater as they move through the school system and such differences become more pronounced between the end of primary school and the end of secondary education.
- Black young people appear less likely to engage in voluntary and social/political activities.

The Mayor is concerned that the educational system is not getting the best out of young black people. From an early age black children under-achieve in schools. They are also far more likely than other ethnic groups to be permanently excluded. Whilst London has lower exclusion rates for black pupils than most other regions, its black pupils are still twice as likely as its white pupils to be excluded.

This can be explained by socio economic disadvantage, teacher expectations, length of settlement and schooling in UK, parental education and aspirations, fluency in English and institutional racism. There is also a lack of black teachers. Just under 3 per cent of London teachers are black, compared with one-fifth of all school pupils.

The Way Forward

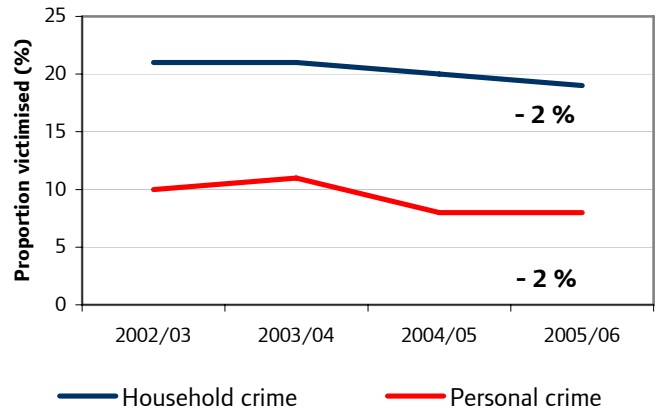
It is extremely concerning that time and time again research, including from the Government itself, has shown that the over-representation of black people throughout the criminal justice system cannot all be explained by the extent and nature of offending. The clear implication of this is that there is direct and institutional racism towards black people within the criminal justice system that is not being adequately addressed.

Whilst the Mayor believes that the Committee does need to review the evidence base and establish the true extent of the over-representation of young black people in the criminal justice system, in light of the existing evidence he urged the Committee to focus its efforts on identifying gaps in data, establishing detailed causes of the over-representation of young black people and identifying a comprehensive and timetabled action plan involving a wide range of partners to address disproportionality as a matter of priority. It would be a wasted opportunity if the Committee restricted itself to merely summarising what is already a rich evidence base. □

1.CRIME AND VICTIMISATION

1.1 THE BRITISH CRIME SURVEY (BCS) - LONDON SAMPLE

- The BCS is the most reliable indicator of general adult victimisation levels in London - the survey records a proportion of the crime that goes unreported to the police.
- Of 3,500 people surveyed for '05/06, 19 Per cent had experienced household crime and 8 Per cent experienced personal crime.
- These represented a 2 Per cent decrease on 2002/03 levels for both types of crime.



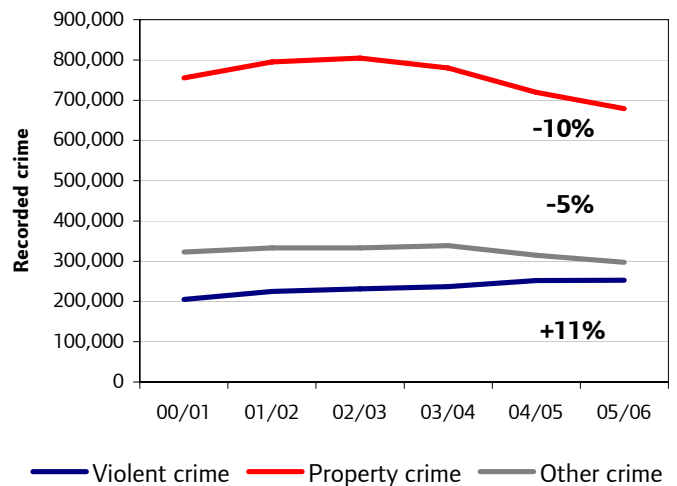
Source: Home Office Crime in England & Wales

Note: Published records started 2002/03. 'Household crime' includes: bicycle theft; burglary; theft in a dwelling; other household theft; thefts of and from vehicles; and vandalism to household property and vehicles. 'Personal crime' includes: assault; sexual offences; robbery; theft from the person; and other personal theft.

METROPOLITAN POLICE SERVICE RECORDED CRIME & VICTIMISATION

1.2 Crime trends since 2001/02

- Police recorded crime is a less reliable indicator of common adult victimisation trends compared to the BCS. It does though allow a more frequent and detailed analysis of a greater range of crimes (see following sections).
- Overall recorded crime has decreased by 4 Per cent since 2001/02.
- There has been a 10 Per cent decrease in property crime and an 11 Per cent increase in recorded violence; other crime has decreased 5 Per cent



Source: MPS crime figures

1.3 Crime trends April to December 06

- All recorded crime decreased by 51,863 offences (7 Per cent) comparing April to December 06 with the same period the previous year.

Decreasing crime

- Violence against the person showed the largest reduction in volume (10,489) followed by total burglary (5,787).

Increasing crime

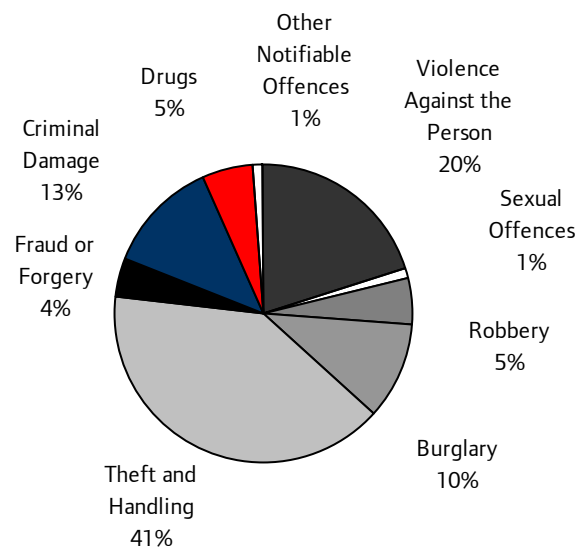
- In terms of volume, robbery recorded the highest increase (836 offences), followed by rape (12 offences).

Crime category	Apr – Dec 05	Apr– Dec 06	Change (%)
All violent crime	194,024	183,853	-5
Violence against the person	152,627	142,138	-7
Vehicle crime	102,110	98,968	-3
Total burglary	77,865	72,078	-7
Domestic violence offences	46,333	43,132	-7
Street crime	42,847	42,599	-1
Burglary dwelling	47,991	44,544	-7
Robbery	33,550	34,386	2
Knife enabled crime	9,455	9,207	-3
Racial offences	8,948	7,892	-12
Sexual offences	7,847	7,329	-7
Gun enabled crime	3,049	2,566	-16
Rape	1,822	1,834	1
Homophobic offences	1,037	954	-8
Faith Hate offences	690	276	-60
Total homicide	131	128	-2
TOTAL NOTIFIABLE OFFENCES	748,205	696,342	-7

Source: MPS crime figures. Note: this list of offence categories is not exhaustive or mutually exclusive. As such the figures in the columns will not add up to the total at the bottom.

1.4 The extent of different types of offending April – December 06

- The majority of all recorded crime in London is accounted for by theft and handling offences (41 per cent) and violence against the person (20 per cent). The latter category involves a lot of less serious violence e.g. harassment.
- More serious crimes like robbery and sexual offences are far less common: 5 per cent and 1 per cent respectively of all recorded crime.



Source: MPS crime figures

1.5 Gun and knife enabled crime

- There was over three times the amount of knife-enabled crime as gun enabled crime recorded in London.
- Gun enabled offending reduced significantly by 483 offences.

Offence type	April – Dec 05	April – Dec 06	Change (%)
Gun enabled crime	3,049	2,566	-15.8
Knife enabled crime	9,455	9,207	-2.6

Source: MPS crime figures

1.6 Sanctioned detections¹ Apr – December 06

- The sanctioned detection rate for all crime was 21 per cent.
- The highest sanctioned detection rate was recorded for murder and the lowest for vehicle crime.
- More serious types of crime have higher sanctioned detection rates. This partially reflects the greater resources allocated to more serious investigations.

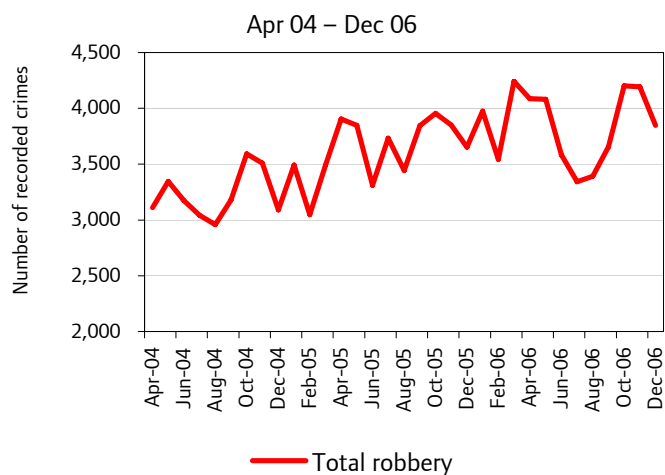
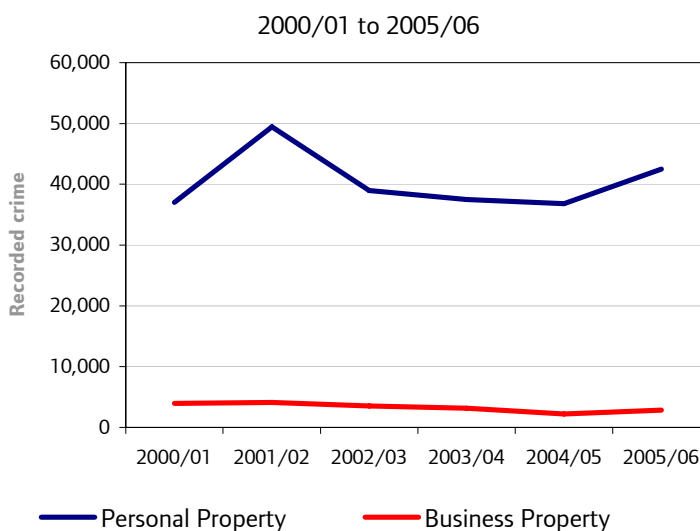
Crime category	Sanctioned detection rate
Murder	83%
Domestic violence	37%
Violence against the person	30%
Rape	30%
Racial offences	31%
Sexual offences	25%
Burglary dwelling	21%
Homophobic crime	28%
Robbery	14%
Vehicle crime	7%

Source: MPS sanctioned detection figures
Note: this is not an exhaustive list of crime categories.

1.7 Focus on rising crime - Robbery

- Robbery can involve personal or business property. However, the former accounts for the majority of offending.
- Personal robbery had reached record levels in London during 2001/02 mirroring national trends.
- The *Safer Streets* initiative helped to reduce and suppress offending below 40,000 offences per year up until 2004/05. A 15 per cent increase was recorded for '05/06; offending rose to nearly 42,500.
- The MPS have implemented a *Safer Streets 2006* initiative (April '06) that uses tried and tested methods of street crime reduction to address the upward trend.

Source: MPS crime figures



¹ Sanctioned detections are where a crime has been committed and recorded, a suspect has been identified, and a charge, summons, caution, formal warning, youth reprimand, has been issued or the offence has been taken into consideration in conjunction with another crime.

1.8 Transport and crime

- Crime levels on the London Underground and the Docklands Light Railway (the British Transport Police 'L' area) are much lower than for the broader Metropolitan Police Service Area (14,164 compared to 696,342 or 2 per cent as a proportion).
- Common types of crime committed are theft from passengers, criminal damage, violence against the person and serious public order offences (these account for 82 per cent of all crime).

Crime category	April - Dec 05	April - Dec 06	Change
Theft of passenger property	6,026	5,991	-1%
Criminal damage / malicious mischief	1,317	2,235	70%
Violence against the person	2,055	1,919	-7%
Serious public order offences	1,117	1,540	38%
Drug offences	634	539	-15%
Theft of railway /commercial property and burglary offences	1,053	538	-49%
Sexual offences	382	319	-16%
Robbery	256	314	23%
Motor vehicle/cycle offences	296	299	1%
Other serious offences	739	231	-69%
Serious line of route offences	193	133	-31%
Serious fraud offences	170	106	-38%
Total notifiable offences	14,238	14,164	-1%

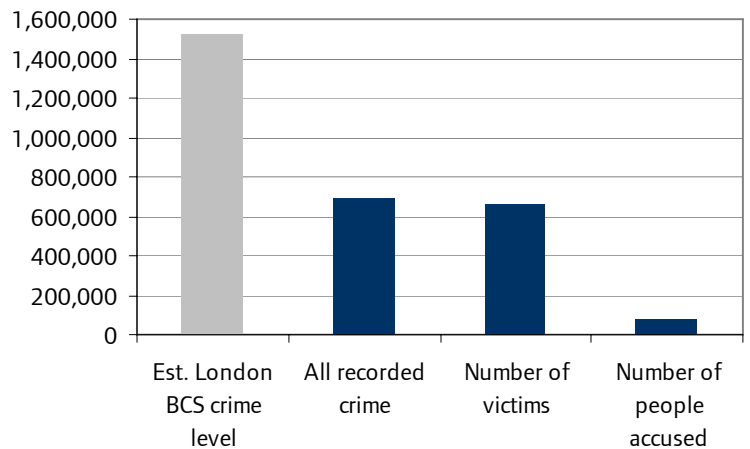
Source: British Transport Police crime figures for London

- There appears to have been a 1 per cent reduction in overall offending (74 fewer crimes).
 - In contrast, some specific types of crime increased: 918 more criminal damage offences, 423 serious public order offences and 58 robbery offences.
-

2. VICTIMS AND OFFENDERS

2.1 Number of crimes, victims and people accused – April to Dec 06

- The British Crime Survey indicates the adult risk of being a victim of any crime in London is 28 per cent or 1 in 3.5 (over 12 months 05/06). This risk will vary with personal routines and circumstances.
- During Apr to Dec '06, there were 696,342 crimes recorded by police. Not all crimes are recorded and so the BCS estimated total is higher.
- There were 657,843 victim records.²
- There were 81,060 people legally proceeded against or 'accused'.



Source: MPS crime, victims and accused figures

- The number of accused does not equate directly to policing effectiveness. This is measured by the amount of crimes detected and sanctioned¹ (see 1.6).

2.2 Youth: those accused (aged 10-17) and victims (aged up to 17) – April 06 to Jan 07³

- Children and young people aged up to 17 account for 21.7 per cent of London's population.⁴
- Using the above population proportion as a measure, this age group are broadly under represented as victims accounting for only 9 per cent.
- However, those aged up to 17 were disproportionately victimised with regard to robbery, sexual offences and rape.

VICTIMS by crime type	Number of children and youth victims	Total number of all victims	Percentage of youths victims
Violent Crime	41,630	195,894	21%
Robbery	15,285	40,881	37%
Other sexual	2,473	5,937	42%
Vehicle Crime	2,047	113,241	2%
Domestic Violence	1,748	47,648	4%
Burglary Dwelling	1,217	59,437	2%
Racist Crime	996	8,595	12%
Rape	611	2,061	30%
Faith Hate	50	557	9%
Homophobic Crime	41	1,149	4%
Antisemitic	18	191	9%
Homicide	16	148	11%
Islamophobic	16	160	10%
Total notifiable offences	68,809	731,176	9%

Source: MPS victimisation figures

² There are fewer victims than offences because many crimes are the result of detection rather than victim reports e.g. possession of drugs, or weapons found after searches. These are considered crimes against the Crown.

³ Figures for January were available and used to provide more up to date statistics.

⁴ From Office National Statistics 2005 projections for London.

- Those aged between 10 and 17 account for 9.2 per cent of London’s population.
- Using this population proportion as a measure, those aged between 10 and 17 are disproportionately involved in crime (22 per cent of all those accused).
- Youths were over represented for most crimes including robbery (63 per cent), vehicle crime (34 per cent), burglary (24 per cent), and racist offences (22 per cent).
- The only crime types where youths were not over represented were domestic violence and ‘other sexual’ offences.

ACCUSED by crime type	Number of youths accused	Total number of all accused	Percentage of youths accused
Violent Crime	7,411	34,435	22%
Robbery	2,580	4,076	63%
Vehicle Crime	1,187	3,506	34%
Racist Crime	1,120	5,134	22%
Burglary Dwelling	580	2,420	24%
Domestic Violence	205	10,119	2%
Other sexual	94	1,013	9%
Homophobic Crime	77	357	22%
Rape	71	505	14%
Homicide	28	157	18%
Faith Hate	17	68	25%
Antisemitic	9	19	47%
Islamophobic	3	25	12%
Transphobic	3	10	30%
Total notifiable offences	20,002	90,811	22%

Source: MPS figures for those accused of crime

2.3 Ethnic appearance⁵ of victims and people accused of crime - Apr 06 to Jan 07

Please see footnote 5

Victimisation rates

- There was little in the way of significant variation regarding ethnicity and general victimisation rates per 1,000 population. There were though indications of over representation concerning specific types of crime.
- BAME Victimisation rates for robbery, violent crime, rape, homicide and racist offences were all higher than average.
- ‘African/Caribbean’ people recorded a victimisation rate three times higher than the average for homicide.
- ‘Indian/Pakistani’, ‘African/Caribbean’, and ‘southern/dark European’ people all had racist victimisation rates three times higher than average.

⁵ The GLA promote the collection and use of census compliant self-defined ethnicity data for victims and those accused of crime. However, this data is largely incomplete for victims and to a lesser extent for accused. Due to this the following analysis uses ethnic appearance data as defined by police. These categories are crude but provide the most complete information on the victimisation and offender rates for different ethnicities.

VICTIMS MPS ethnic appearance categories	Total crime	Domestic Burglary	Vehicle crime	Robbery	Violent crime	Domestic violence	Rape	Homicide	Racist offences
'Northern/white European'	0.6	0.8	0.6	0.7	0.7	0.7	0.8	0.6	0.3
'Indian / Pakistani'	0.9	0.9	1.0	1.7	1.4	1.2	0.9	1.1	3.1
'African/Caribbean'	1.0	0.9	0.8	1.3	1.9	2.3	2.3	3.2	3.2
'Southern/dark European'	1.5	1.7	1.3	2.3	2.1	1.9	1.5	2.0	2.3
'Arabian / Egyptian'	1.4	1.3	1.2	1.6	2.0	1.5	1.1	2.8	3.5
'Chinese / Japanese'	1.0	1.4	0.6	2.3	1.2	0.9	1.4	1.0	1.4
All BAME groups (excl. white minorities covered by "northern/white Europeans")	1.1	1.1	0.9	1.6	1.7	1.7	1.6	2.1	3.0

Source: MPS victimisation figures

Accused rates

- BAME groups recorded higher accused rates per 1,000 population. This is likely to be related to the higher levels of deprivation and exclusion BAME people live with.
- 'African/Caribbean' people recorded the highest rates, particularly for rape and homicide, 'Arabian/Egyptian' people recorded similar rates for these offences.
- The highest rate recorded was for robbery: 'African/Caribbean' recorded a rate 5 times the average.

ACCUSED MPS ethnic appearance categories	Total crime	Domestic Burglary	Vehicle crime	Robbery	Violent crime	Domestic violence	Rape	Homicide	Racist offences
'Northern/white European'	0.7	0.8	0.8	0.4	0.7	0.7	0.5	0.4	0.7
'Indian / Pakistani'	0.9	0.6	0.8	0.9	1.0	1.2	1.2	2.2	0.9
'African/Caribbean'	3.0	3.0	2.5	5.3	3.1	2.4	4.1	3.7	2.8
'Southern/dark European'	2.1	1.5	1.4	1.5	1.9	2.1	2.4	2.1	1.8
'Arabian / Egyptian'	2.4	1.4	1.6	1.8	1.9	1.6	3.1	3.6	1.4
'Chinese / Japanese'	1.1	0.4	0.3	0.3	0.6	0.8	1.2	1.4	0.6
All BAME groups (excl. white minorities covered by "northern/white Europeans")	2.0	1.7	1.6	2.8	2.0	1.8	2.6	2.8	1.8

Source: MPS figures for those accused of crime

2.4 Women's Safety

- Small reductions were recorded for domestic violence and rape.
- Sanctioned detection rates increased for domestic violence.

Crime category	Apr – Dec 05	Apr – Dec 06	Change
Recorded domestic violence	46,333	43,132	-6.9%
Recorded rape	1822	1834	0.7%
Domestic violence Sanctioned detections	26%	37%	Up 11 points
Rape Sanctioned detections	31%	30%	Down 1 point

Source: MPS crime and sanctioned detection figures

2.5 Those accused of gun and knife enabled crime - April to June 06⁶

- Those accused of gun and knife enabled crime tended to be male, black or white, and young with peak ages around 17/18 years.
- Those aged between 10 and 17 years accounted for over one quarter of people accused of gun crime and over one third of the people accused of knife crime.

Demographic	Gun enabled %	Knife enabled %
Youth (10-17)	26	35
Black	57	38
White	29	46
Asian	8	8
Other	5	8
Female	2	12

*Source: MPS figures for those accused of crime.
Note: the percentages in grey are independent of those in white – the columns will not add to 100 per cent.*

⁶ Quarter 3 statistics were unavailable at the time of publication.

3. POLICE AND POLICING

3.1 Police strength and composition – December 06

- Police officers account for 64 per cent of MPS workforce, Police Community Support Officers 6.4 per cent.
- Police staff (e.g. office workers, forensics etc.) account for 29 per cent of the workforce.

Employee type	2006/07 Target	Actual strength	Difference between target and actual strength		Actual strength compared to April 05
			Number	%	
Police officers	31,559	30,829	-730	-2.3%	0%
Police Staff	14,425	13,926	-499	-3.5%	1%
PCSOs	4,562	3,080	-1,482	-32.5%	31%
Total	50,546	48,194	-2,352	-4.7%	1.7%

Source: MPS workforce figures

3.2 Police diversity – December 06

- As of December '06, 20 Per cent of police officers were women and 8 Per cent were from minority ethnic groups.
- Police Community Safety Officer (PCSO) diversity is more representative of London's population with over 30 Per cent being female and 35 per cent from ethnic minority background.

Type of staff	Female		Black, Asian & minority ethnic (BAME)			
	Strength	% of total strength	Male	Female	Total	Total as % of strength
Police	6,271	20.3%	1,833	542	2375	7.7%
Police Staff	8,166	58.6%	1,043	2,118	3161	22.7%
PCSOs	1,040	33.7%	758	255	1012	32.9%
Total	15,673	32.5%	3,673	2,946	6,619	13.7%

Source: MPS workforce figures

3.3 Safer Neighbourhoods Performance framework

Performance has remained relatively consistent for April to Dec 06:

- Over half of Londoners have confidence in their local police
- The vast majority feel safe while walking alone during the day and 74 per cent after dark
- Close to 60 per cent agree that the police understand issues affecting their community

MPS PUBLIC ATTITUDES SURVEY	Q3 06/07	2005/06	2004/05	Change pp comparing Q3 06/07 with 05/06
Confidence in local policing	56%	58%	52%	-2
Feeling safe walking alone during the day	96%	96%	97%	0
Feeling safe walking alone during after dark	74%	70%	75%	+4
Agree the police understand the local issues affecting this community	59%	64%	...	-5
Agree the deal with issues that affect their community	59%	60%	...	-1
Percentage of people worried about antisocial behaviour	38%	35%	44%	3

3.4 Safer Neighbourhoods: Tackling local issues

- The level of community based policing has increased dramatically as every London ward now has a Safer Neighbourhoods team.

Number of actions taken	Apr – Dec 06
Stop and Search/ Stop and Account	134,685
Burglary, robbery and hate crime victim visits	27,306
Number of arrests (excluding warrants)	11,600
Environmental visual audits	4,227
Prolific/Persistence Offender disruption tactics	4,047
Public Notice for Disorder (PND)	2,665
Section 59 warnings issued/vehicles seized for careless driving	2,612
Acceptable Behaviour Contracts (ABCs)	2,097
Number of arrest warrants executed	1,964
Dispersal Notices	733
Anti-social Behaviour Orders (ASBOs)	606
Crack house closures	288

Source: MPS Safer Neighbourhoods Monthly Management and Review figures. Note: There are no comparable figures as yet – these figures have only been collected since April 2006.

3.5 Stop and search and ethnic appearance

Please see footnote 5

- PACE stop and searches have increased 12 per cent compared to the same period the previous year.
- After taking into account different population sizes, the stop and search risk ratio for Q3 2006-07 was 4 times higher for people who are thought to be 'African/Caribbean'.

Stopped and searched	Apr - Dec 05	Apr - Dec 06	Change (%)	Stop and search rate per 1,000	Rate ratio to white stop and search
'White/northern European'	94,109	104,711	11.3	20.5	1
'African/Caribbean'	71,595	82,249	14.9	81.8	4.0
'Indian/Pakistani'	23,875	29,640	24.1	27.7	1.4
Other BAME ethnic appearance	6,137	6,831	11.3	19.7	1.0
Total	195,716	223,431	14.2	29.6	1.4

Source: MPS stop and search figures

- Despite the fact that black people were 4 times more likely to be stopped and searched they were not significantly more likely to be arrested as a consequence.

Stopped, searched and arrested	Apr - Dec 05	Apr - Dec 06	Change (%)	Percentage of people stopped leading to arrests
'White/northern European'	11,044	12,075	9.3	11.5%
'African/Caribbean'	9,332	10,365	11.1	12.6%
'Indian/Pakistani'	2,245	2,737	21.9	9.2%
Other BAME ethnic appearance	942	924	-1.9	13.5%
Total	23,563	26,101	10.8	11.7%

Source: MPS stop and search figures

4. CRIMINAL JUSTICE

4.1 Criminal Justice in London

- Offences brought to justice increased by 14 per cent. These include convictions, cannabis formal warnings, cautions, penalty notices for disorder (PNDs) and crimes taken into account during legal proceedings for another offence.
- The number of ineffective trials (i.e. unable to proceed on the day they were scheduled to start) reduced at both the Crown and Magistrates' Court.

London	Apr - Dec 05	Apr - Dec 06	Change
Offences brought to justice	131,471	149,524	13.7%
Ineffective Magistrates' trials	25%	20%	Down 5 points
Ineffective Crown Court trials	14.80%	13.60%	-1%
Enforcement of financial penalties	59.20%	76.50%	Up 17 points

	Jun-05	Jun-06	Change
Public confidence in bringing offenders to justice	45%	48%	Up 3 points

Source: London Criminal Justice Board

- Confidence in bringing offenders to justice moved closer to 50 per cent

4.2 The London Prison Population - Dec 06

- There were over 8,300 prisoners held in London prisons as of December 2006. Of these 14 per cent were female.
- Collectively, London prisons are overcrowded by 15 per cent (1,087) although this varies by establishment and prisoner type. Womens' prisons are not overcrowded and male prisons are overcrowded by 22 per cent.

H.M. Prisons (London)		Capacity	Number of prisoners	Prison population as a proportion of capacity (%)	Number of young prisoners
MALE	Belmarsh	799	929	116%	20
	Brixton	606	800	132%	0
	Feltham	764	610	80%	610
	Highdown	643	750	117%	142
	Latchmere House	207	198	96%	0
	Pentonville	644	1,032	160%	0
	Wandsworth	965	1,473	153%	3
	Wormwood Scrubs	1,173	1,260	107%	0
	Total	5,801	7,052	122%	775
FEMALE	Bronzefield	450	432	96%	25
	Downview	347	340	98%	16
	Holloway	487	427	88%	91
	Total	1,284	1,199	93%	132
ALL	Total	7,234	8,321	115%	907

Source: Home Office, National Offender Management Service

- The following prisons were the most overcrowded: Wandsworth with 508 prisoners over the recommended capacity, Pentonville 388, and Brixton 194.
 - 52 per cent of all prisoners in London are from BAME backgrounds, 34 per cent of all prisoners are 'black or black British', and 35 per cent of all prisoners are not of UK nationality.
 - Young offenders (aged under 21) accounted for 11 per cent of all prisoners (907 people).
-

5. FIRE AND EMERGENCY

5.1 Key fire and emergency statistics – Oct to Dec 06

- The total number of fires in London reduced 10 per cent and primary fires were also down 7 per cent.

	Oct – Dec 06	Oct – Dec 05	Change
All fires	7,929	8,842	-10.3%
Primary fires*	3,842	4,130	-7.0%
Accidental fires in dwellings	1,620	1,662	-2.5%
Deaths arising from accidental fires in dwellings	12	17	-29.4%
Injuries arising from accidental fires in dwellings	94	195	-51.8%
Total deliberate fires	3,447	4,171	-17.4%
Derelict vehicle fires	287	340	-15.6%
Home fire safety checks carried out by LFEP staff	7,388	6,180	19.5%
Proportion of time spent by station based staff on community safety	9.56%	8.22%	16.3%

Source: London Fire and Emergency Planning Authority.

*Primary fires include all fires in buildings, vehicles and outdoor structures or any fires involving casualties or rescues or fires attended by five or more appliances.

- Accidental fires in the dwelling and related deaths and injuries have all fallen.
- Home fire safety checks and the proportion of staff spending time on community safety both increased.

6. POLICY & RESEARCH DEVELOPMENTS

Cost effectiveness of Safer Neighbourhoods – London Assembly

A London Assembly Budget Committee scrutiny of the performance of Safer Neighbourhoods Teams in their first three years warns that, while Londoners have welcomed the initiative, the cost to council taxpayers means that the impact and value for money of the initiative needs to be clarified. The amount of GLA precept income contributing to SNTs has risen from GBP26.6m in 2004/05 to GBP97.8m in 2006/07, while total expenditure, including Government and Metropolitan Police Service funding, is GBP220m for 2006/07. The Committee identifies ways that performance of SNTs could be more effectively assessed. Available at <www.london.gov.uk/assembly/budgmtgs/2007/feb01/agenda.jsp> (see appendix link). (Greater London Authority PN 042 29/01/2007) (D0700426)

ASB – Respect: one year on

The Respect Task Force has published 'Respect: one year on', showing that, in 2005/06, there were over 7,000 acceptable behaviour contracts in place in England, compared to under 4,000 in 2003/04 (available at <www.respect.gov.uk/members/article.aspx?id=9748>). Meanwhile, Camden Council, in 'Report of the anti-social behaviour review' has noted the lack of evidence on the effectiveness of the interventions that it has taken and called for more data on whether Antisocial Behaviour Orders are disproportionately used against ethnic minorities and vulnerable adults (available at <<http://www3.camden.gov.uk/templates/committees/documents/19997.doc>>). (Community Care 25/01/2007 p6) (D0700387)

ASBOs and Ethnicity

According to Home Office statistics, obtained in reply to a Parliamentary Question by James Brokenshire MP: the number of penalty notices issued for seven offences, including shoplifting, criminal damage, drunk & disorderly conduct and "causing harassment, alarm or distress", rose from 58,706 in 2004 to 137,333 in 2005, while 83,590 were issued in the first six months of 2006; 60,000 people a year found in possession of cannabis receive a warning rather than a charge; around 300,000 defendants are convicted a year, of whom one in four receive prison sentences; and half of penalties issued for disorder are paid within the required 21 days. (STel 07/01/2007 p4) (D0700091)

Abolishment of Assets Recovery Agency

The Home Office announced on 11 January that it is to abolish the Assets Recovery Agency, which had seized £4.4m in 2004/05, compared with running costs of almost GBP20m, and was expected to break even in 2007/08. The Agency will be merged with the Serious Organised Crime Agency from April 2008, and Crown prosecutors will then take on powers to launch civil recovery proceedings, with the ARA's "centre of excellence", which has trained over 650 financial investigators, moving to the National Policing Improvement Agency. (G 12/01/2007 p14) (D0700151)

Children who have committed serious violence – What works?

'Children who commit acts of serious interpersonal violence', edited by Ann Hagell and Renuka Jeyarajah-Dent and published by Jessica Kingsley Publishers, explores risk management and successful intervention for children in public care who have or may commit acts of serious violence. The report identifies subgroups of children who are difficult to place and examines risk factors leading to extremely violent behaviour. Includes details of a survey of 168 social services departments in England and Wales showing that there are over 1,000 children, mainly boys aged 13-15, who regularly commit offences such as threatening their parents, killing animals, sexual abuse or murder. (O 21/01/2007 p10; GLA Information Services additional research 22/01/2007) (D0700254)

CPS/HMIC report on rape and justice

HM Crown Prosecution Service Inspectorate and HM Inspectorate of Constabulary published on 31 January a joint Thematic Report on the investigation and prosecution of rape offences. 'Without consent' finds that: alleged victims have a one in 20 chance of seeing their attacker brought to justice; the conviction rate for rape is now 5.3% of recorded cases; the number of convictions rose from 640 in 2002 to 728 in 2005, although the number of allegations increased by 40% in the four years to 2004/05 to 13,721; 75-90% of cases are unreported or not recorded; 85% of cases involved a known attacker; and alcohol and/or drugs were a feature in half the cases. Available at <www.hmcpai.gov.uk/reports/Without_Consent_Thematic.pdf>.

(G 31/01/2007 p7; Ind 31/01/2007 p6; T 31/01/2007 p4; Tel 31/01/2007 p10) (D0700373)

Ten years of criminal justice under Labour

In 'Ten years of criminal justice under Labour: an independent audit', published on 15 January by the Centre for Crime & Justice Studies in association with the 'Sunday Times', Richard Garside and Enver Solomon present a critical assessment of Labour Government changes to the criminal justice system since 1997 and the extent to which they have achieved their goals, covering key government performance targets, such as crime levels, re-offending rates, bringing more offences to court and tackling antisocial behaviour, and considering progress on policing, youth justice and drugs. Available at <www.kcl.ac.uk/depsta/rel/ccjs/ten-years-of-labour-2007.pdf>.

(Centre for Crime & Justice Studies PN 15/01/2007) (D0700169)

Street warnings for Cannabis – police variable practice

In 'Policing cannabis as a Class C drug: an arresting change?', published by the Joseph Rowntree Foundation on 21 January, Tiggey May, Martin Duffy, Hamish Warburton and Mike Hough of King's College Institute for Criminal Policy Research say that, despite police guidance to issue street warnings for most cannabis possession offences since reclassification in 2004, the proportion of street warnings in four police areas varied from 22% to 42%. Decisions to arrest or issue a street warning depended on the views of the officer, the amount of cannabis found, the attitude of the offender and local policy, while people from black and minority ethnic groups were over represented among those arrested or given street warnings.

(Joseph Rowntree Foundation PN 21/01/2007 ; O 21/01/2007 p7) (D0700256)

Home Office: Youth offending survey '05

'Young people and crime: findings from the 2005 offending crime and justice survey', published on 19 November by the Home Office, shows that: one in four young people aged between 10 and 25 committed a crime, equivalent to 2.8m offenders; the most common "confessed" crimes were assaults and thefts; 5% of young men carried a knife, compared with 2% of young women; and the peak ages for offending for males was between 16 and 19, and for females 14 to 15. Available at www.homeoffice.gov.uk/rds/pdfs06/hosb1706.pdf

Home Office: Guns research - use and availability

'Gun crime: the market in and use of illegal firearms' (Home Office Research Study 298), published on 14 December, is a study of criminal attitudes towards the illegal firearms market and the relationships between gun crime, illegal drug markets, gangs and "gun culture", based upon interviews with 80 recently convicted and imprisoned male Firearms Act offenders aged 18-30 in England. The report, which identifies potential interventions and deterrence strategies, shows that, while Nottingham is viewed as "Britain's gun crime capital", guns are much more available in Manchester, Liverpool, Birmingham and London. Available at www.homeoffice.gov.uk/rds/pdfs06/hors298.pdf